

The Genuine. The Original.



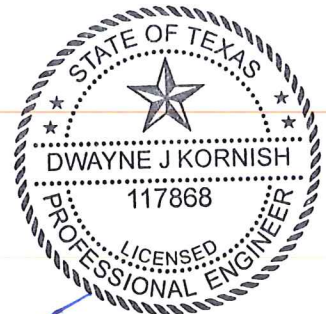
Jamb Connection Supplement



This document provides a series of connection schedules and basic detailing concepts for the connection of garage door jambs to building frames with the use of various fasteners. DASMA Technical Data Sheet [TDS-161](#) may be used as an alternate to this document.

**SCHEDULE 1
5/16" DIAMETER LAG SCREWS**

LOAD PER JAMB (LB/FT) ^{NOTE 3}	MAXIMUM SPACING OF LAG SCREWS PER JAMB (IN)		
	MAIN SUPPORT MEMBER SPECIES		
	SYP SPECIFIC GRAVITY - 0.55	DOUGLAS FIR SPECIFIC GRAVITY - 0.46	SPF SPECIFIC GRAVITY - 0.42
100	24	24	24
120	24	24	24
140	24	24	24
160	24	24	24
180	24	24	24
200	24	24	24
220	24	24	22
240	24	24	20
260	24	22	19
280	24	20	17
300	24	19	16
320	22	18	15
340	21	16	14
360	20	16	13
380	19	15	13
400	18	14	12
420	17	13	11
440	16	13	11
460	15	12	10
480	15	12	10
500	14	11	10
520	14	11	9
540	13	10	9
560	13	10	8
580	12	9	8
600	12	9	8
620	11	9	8
640	11	9	7
660	11	8	7
680	10	8	7
700	10	8	7
720	10	8	6
740	9	7	6
760	9	7	6
780	9	7	6
800	9	7	6



1. BASED ON 5/16" DIAMETER LAG SCREWS WITH 1-1/2" O.D. WASHERS WITH A 1-9/32" THREAD PENETRATION INTO SEASONED DRY WOOD SUPPORTING STRUCTURE.
2. PROVIDE QUANTITY OF LAG SCREWS AS REQUIRED TO MAINTAIN MAXIMUM SPACING AS SHOWN IN TABLE WITH A MINIMUM OF THREE (3) LAG SCREWS PER JAMB. LAG SCREWS AT TOP AND BOTTOM OF JAMB SHALL BE PLACED A MAXIMUM OF 6" FROM THE END OF THE JAMB.
3. LOAD PER JAMB CALCULATED BY TAKING DESIGN LOAD (PSF) TIMES DOOR WIDTH (FT) DIVIDED BY 2.

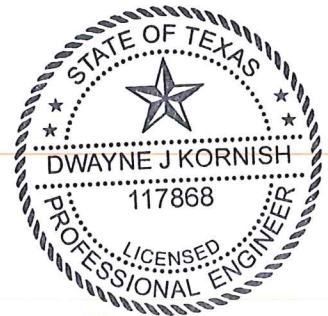
EXAMPLE: DESIGN LOAD = 30psf
 DOOR WIDTH = 16ft
 LOAD PER JAMB = 30psf x 16ft/2 = 240lb/ft

4. CHART IS BASED ON 6'-6" MINIMUM AND 24'-0" MAXIMUM DOOR HEIGHT.
5. DOOR JAMB TO BE 2x4 OR LARGER NO. 2 GRADE SPF LUMBER OR BETTER MOUNTED TO SUPPORT STRUCTURE. IF MOUNTING OVER DRYWALL, INCREASE FASTENER LENGTH TO ACHIEVE MINIMUM REQUIRED PENETRATION.
6. DESIGN OF THE SUPPORT STRUCTURE SHALL BE THE SOLE RESPONSIBILITY OF THE BUILDING DESIGNER AND SHALL BE DESIGNED FOR THE JAMB LOAD LISTED IN ABOVE TABLE AS CALCULATED PER NOTE 3.
7. MINIMUM EDGE DISTANCE SHALL BE 1/2", MINIMUM FASTENER SPACING SHALL BE 1-1/2", AND ALL HOLES SHALL BE PRE-DRILLED TO PREVENT SPLITTING.
8. LAG SCREWS SHALL CONFORM TO ANSI / ASME STANDARD B18.2.1.

Approved _____
 Dwayne J. Kornish, P.E.
 4576 County Rd 160
 Mount Hope, Ohio
 FL PE 77945 TX PE 117868

SCHEDULE 2
16d COMMON WIRE NAILS AND 16d THREADED HARDENED-STEEL NAILS

LOAD PER JAMB (LB/FT) ^{NOTE 3}	MAXIMUM NAIL SPACING PER JAMB (IN)		
	MAIN SUPPORT MEMBER SPECIES		
	SYP SPECIFIC GRAVITY - 0.55	DOUGLAS FIR SPECIFIC GRAVITY - 0.46	SPF SPECIFIC GRAVITY - 0.42
100	24	24	19
120	24	20	16
140	21	17	14
160	18	15	12
180	16	13	10
200	15	12	9
220	13	11	8
240	12	10	8
260	11	9	7
280	10	8	7
300	10	8	6
320	9	7	6
340	8	7	n/a
360	8	6	n/a
380	7	6	n/a
400	7	6	n/a
420	7	n/a	n/a
440	6	n/a	n/a
460	6	n/a	n/a
480	6	n/a	n/a
500	6	n/a	n/a
520	n/a	n/a	n/a
540	n/a	n/a	n/a
560	n/a	n/a	n/a
580	n/a	n/a	n/a
600	n/a	n/a	n/a
620	n/a	n/a	n/a
640	n/a	n/a	n/a
660	n/a	n/a	n/a
680	n/a	n/a	n/a
700	n/a	n/a	n/a
720	n/a	n/a	n/a
740	n/a	n/a	n/a
760	n/a	n/a	n/a
780	n/a	n/a	n/a
800	n/a	n/a	n/a



DJK
4/13/2021

1. BASED ON 16d COMMON WIRE NAILS (0.162"x3-1/2") OR 16d THREADED HARDENED-STEEL NAILS (0.148"x3-1/2") WITH A MINIMUM PENETRATION OF 2" INTO SIDE GRAIN OF MAIN MEMBER.
2. NAILS SHALL BE PROVIDED IN PAIRS AT A MAXIMUM SPACING AS SHOWN IN TABLE WITH A MINIMUM OF THREE (3) PAIRS OF NAILS PER JAMB. NAILS AT TOP AND BOTTOM OF JAMB SHALL BE PLACED A MAXIMUM OF 6" FROM THE END OF THE JAMB.
3. LOAD PER JAMB CALCULATED BY TAKING DESIGN LOAD (PSF) TIMES DOOR WIDTH (FT) DIVIDED BY 2.

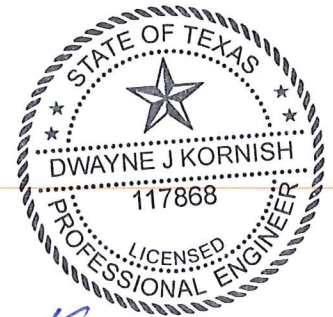
EXAMPLE: DESIGN LOAD = 30psf
 DOOR WIDTH = 16ft
 LOAD PER JAMB = 30psf x 16ft/2 = 240lb/ft

4. CHART IS BASED ON 6'-6" MINIMUM AND 24'-0" MAXIMUM DOOR HEIGHT.
5. DOOR JAMB TO BE 2x4 OR LARGER NO. 2 GRADE SPF LUMBER OR BETTER MOUNTED TO SUPPORT STRUCTURE. IF MOUNTING OVER DRYWALL, INCREASE FASTENER LENGTH TO ACHIEVE MINIMUM REQUIRED PENETRATION.
6. DESIGN OF THE SUPPORT STRUCTURE SHALL BE THE SOLE RESPONSIBILITY OF THE BUILDING DESIGNER AND SHALL BE DESIGNED FOR THE JAMB LOAD LISTED IN ABOVE TABLE AS CALCULATED PER NOTE 3.
7. EDGE DISTANCES, END DISTANCES AND SPACINGS SHALL BE SUFFICIENT TO PREVENT SPLITTING OF THE WOOD.

Approved _____
 Dwayne J. Kornish, P.E.
 4576 County Rd 160
 Mount Hope, Ohio
 FL PE 77945 TX PE 117868

SCHEDULE 3
3/8"Ø A307 HEADED OR HOOKED ANCHOR BOLTS IN NORMAL WEIGHT CONCRETE

LOAD PER JAMB (LB/FT) ^{NOTE 3}	MAXIMUM SPACING OF ANCHOR BOLTS PER JAMB (IN)		
	2000 PSI CONCRETE	2500 PSI CONCRETE	3000 PSI CONCRETE
100	24	24	24
120	24	24	24
140	24	24	24
160	24	24	24
180	24	24	24
200	24	24	24
220	24	24	24
240	24	24	24
260	24	24	24
280	24	24	24
300	24	24	24
320	24	24	24
340	24	24	24
360	23	24	24
380	22	24	24
400	20	24	24
420	19	24	24
440	19	23	24
460	18	22	24
480	17	21	24
500	16	20	24
520	16	20	24
540	15	19	23
560	14	18	22
580	14	18	21
600	13	17	20
620	13	16	20
640	13	16	19
660	12	15	19
680	12	15	18
700	11	14	17
720	11	14	17
740	11	14	16
760	11	13	16
780	10	13	16
800	10	13	15



DJK
4/13/2001

1. BASED ON 3/8"Ø A307 HEADED OR HOOKED (1.69" MIN. HOOK LENGTH) ANCHOR BOLTS WITH A 2" O.D. WASHER WITH A MINIMUM EMBEDMENT DEPTH OF 3" AND A MINIMUM EDGE DISTANCE OF 3".
2. PROVIDE QUANTITY OF ANCHOR BOLTS AS REQUIRED TO MAINTAIN MAXIMUM SPACING AS SHOWN IN TABLE WITH A MINIMUM OF THREE (3) ANCHOR BOLTS PER JAMB. ANCHOR BOLTS AT TOP AND BOTTOM OF JAMB SHALL BE PLACED A MAXIMUM OF 6" FROM THE END OF THE JAMB.
3. LOAD PER JAMB CALCULATED BY TAKING DESIGN LOAD (PSF) TIMES DOOR WIDTH (FT) DIVIDED BY 2.

EXAMPLE: DESIGN LOAD = 30psf
 DOOR WIDTH = 16ft
 LOAD PER JAMB = 30psf x 16ft/2 = 240lb/ft

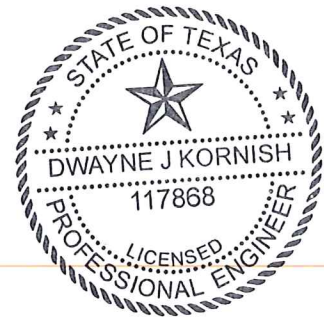
4. CHART IS BASED ON 6'-6" MINIMUM AND 24'-0" MAXIMUM DOOR HEIGHT.
5. DOOR JAMB TO BE 2x6 NO. 2 GRADE SPF LUMBER OR BETTER MOUNTED TO SUPPORT STRUCTURE. IF MOUNTING OVER DRYWALL, INCREASE FASTENER LENGTH TO ACHIEVE MINIMUM REQUIRED PENETRATION.
6. DESIGN OF THE SUPPORT STRUCTURE SHALL BE THE SOLE RESPONSIBILITY OF THE BUILDING DESIGNER AND SHALL BE DESIGNED FOR THE JAMB LOAD LISTED IN ABOVE TABLE AS CALCULATED PER NOTE 3.

Approved _____

Dwayne J. Kornish, P.E.
 4576 County Rd 160
 Mount Hope, Ohio
 FL PE 77945 TX PE 117868

SCHEDULE 4
3/8"Ø SIMPSON TITEN HD SCREW ANCHORS

LOAD PER JAMB (LB/FT) ^{NOTE 4}	MAXIMUM SPACING OF ANCHORS PER JAMB (IN)		
	2500 PSI CONCRETE ^{NOTE 1}	4000 PSI CONCRETE ^{NOTE 1}	2000 PSI GROUT FILLED CMU ^{NOTE 2}
100	24	24	24
120	24	24	24
140	24	24	24
160	24	24	24
180	24	24	24
200	24	24	24
220	24	24	24
240	24	24	24
260	24	24	16
280	24	24	16
300	24	24	16
320	24	24	16
340	24	24	16
360	24	24	16
380	24	24	8
400	24	24	8
420	24	24	8
440	24	24	8
460	24	24	8
480	24	24	8
500	24	24	8
520	24	24	8
540	24	24	8
560	23	24	8
580	22	24	8
600	21	23	8
620	21	22	8
640	20	22	8
660	19	21	8
680	19	20	8
700	18	20	8
720	18	19	8
740	17	19	N/A
760	17	18	N/A
780	16	18	N/A
800	16	17	N/A



DJK
4/13/2021

1. BASED ON 3/8"Ø SIMPSON TITEN HD SCREW ANCHOR WITH A 1-3/4" O.D. WASHER INTO NORMAL WEIGHT UNCRACKED CONCRETE WITH A MINIMUM EMBEDMENT DEPTH OF 2-3/4" AND A MINIMUM EDGE DISTANCE OF 2-3/4".
2. BASED ON 3/8"Ø SIMPSON TITEN HD SCREW ANCHOR WITH A 1-3/4" O.D. WASHER INTO GROUT FILLED CMU WITH A MINIMUM EMBEDMENT DEPTH OF 2-3/4", A MINIMUM EDGE DISTANCE OF 4", AND A MINIMUM END DISTANCE OF 4". CONCRETE MASONRY UNITS SHALL CONFORM TO ASTM C90 AND GROUT SHALL CONFORM TO ASTM C476.
3. PROVIDE QUANTITY OF SCREW ANCHORS AS REQUIRED TO MAINTAIN MAXIMUM SPACING AS SHOWN IN TABLE WITH A MINIMUM OF THREE (3) SCREW ANCHORS PER JAMB. SCREW ANCHORS AT TOP AND BOTTOM OF JAMB SHALL BE PLACED A MAXIMUM OF 6" FROM THE END OF THE JAMB.
4. LOAD PER JAMB CALCULATED BY TAKING DESIGN LOAD (PSF) TIMES DOOR WIDTH (FT) DIVIDED BY 2.

EXAMPLE: DESIGN LOAD = 30psf
 DOOR WIDTH = 16ft
 LOAD PER JAMB = 30psf x 16ft/2 = 240lb/ft

5. CHART IS BASED ON 6'-6" MINIMUM AND 24'-0" MAXIMUM DOOR HEIGHT.
6. DOOR JAMB TO BE 2x6 NO. 2 GRADE SPF LUMBER OR BETTER MOUNTED TO SUPPORT STRUCTURE. IF MOUNTING OVER DRYWALL, INCREASE FASTENER LENGTH TO ACHIEVE MINIMUM REQUIRED PENETRATION.
7. DESIGN OF THE SUPPORT STRUCTURE SHALL BE THE SOLE RESPONSIBILITY OF THE BUILDING DESIGNER AND SHALL BE DESIGNED FOR THE JAMB LOAD LISTED IN ABOVE TABLE AS CALCULATED PER NOTE 4.
8. SCREW ANCHORS SHALL BE INSTALLED PER MANUFACTURER'S WRITTEN INSTRUCTIONS.

Approved _____
 Dwayne J. Kornish, P.E.
 4576 County Rd 160
 Mount Hope, Ohio
 FL PE 77945 TX PE 117868

SCHEDULE 5
3/8"Ø HILTI KWIK BOLT 3 EXPANSION ANCHOR

LOAD PER JAMB (LB/FT) ^{NOTE 4}	MAXIMUM SPACING OF ANCHORS PER JAMB (IN)		
	2500 PSI CONCRETE ^{NOTE 1}	4000 PSI CONCRETE ^{NOTE 1}	2000 PSI GROUT FILLED CMU ^{NOTE 2}
100	24	24	24
120	24	24	24
140	24	24	24
160	24	24	24
180	24	24	24
200	24	24	24
220	24	24	24
240	24	24	24
260	24	24	24
280	24	24	24
300	24	24	24
320	24	24	16
340	24	24	16
360	24	24	16
380	24	24	16
400	24	24	16
420	24	24	16
440	24	24	16
460	24	24	16
480	24	24	8
500	24	24	8
520	24	24	8
540	24	24	8
560	24	24	8
580	24	24	8
600	23	23	8
620	22	22	8
640	22	22	8
660	21	21	8
680	20	20	8
700	20	20	8
720	19	19	8
740	19	19	8
760	18	18	8
780	18	18	8
800	17	17	8



DJK
4/13/201

1. BASED ON 3/8"Ø HILTI KWIK BOLT 3 EXPANSION ANCHOR WITH A 1-3/4" O.D. WASHER INTO NORMAL WEIGHT UNCRACKED CONCRETE WITH A MINIMUM EMBEDMENT DEPTH OF 2-1/2" AND A MINIMUM EDGE DISTANCE OF 3".
2. BASED ON 3/8"Ø HILTI KWIK BOLT 3 EXPANSION ANCHOR WITH A 1-3/4" O.D. WASHER INTO GROUT FILLED CMU WITH A MINIMUM EMBEDMENT DEPTH OF 2-1/2" AND A MINIMUM EDGE DISTANCE OF 4".
ONLY ONE ANCHOR PER MASONRY UNIT
CONCRETE MASONRY UNITS SHALL CONFORM TO ASTM C90 AND GROUT SHALL CONFORM TO ASTM C476.
3. PROVIDE QUANTITY OF ANCHORS AS REQUIRED TO MAINTAIN MAXIMUM SPACING AS SHOWN IN TABLE WITH A MINIMUM OF THREE (3) ANCHORS PER JAMB. ANCHORS AT TOP AND BOTTOM OF JAMB SHALL BE PLACED A MAXIMUM OF 6" FROM THE END OF THE JAMB.
4. LOAD PER JAMB CALCULATED BY TAKING DESIGN LOAD (PSF) TIMES DOOR WIDTH (FT) DIVIDED BY 2.

EXAMPLE: DESIGN LOAD = 30psf
 DOOR WIDTH = 16ft
 LOAD PER JAMB = 30psf x 16ft/2 = 240lb/ft

5. CHART IS BASED ON 6'-6" MINIMUM AND 24'-0" MAXIMUM DOOR HEIGHT.
6. DOOR JAMB TO BE 2x6 NO. 2 GRADE SPF LUMBER OR BETTER MOUNTED TO SUPPORT STRUCTURE.
IF MOUNTING OVER DRYWALL, INCREASE FASTENER LENGTH TO ACHIEVE MINIMUM REQUIRED PENETRATION.
7. DESIGN OF THE SUPPORT STRUCTURE SHALL BE THE SOLE RESPONSIBILITY OF THE BUILDING DESIGNER AND SHALL BE DESIGNED FOR THE JAMB LOAD LISTED IN ABOVE TABLE AS CALCULATED PER NOTE 4.
8. SCREW ANCHORS SHALL BE INSTALLED PER MANUFACTURER'S WRITTEN INSTRUCTIONS.

Approved

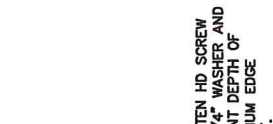
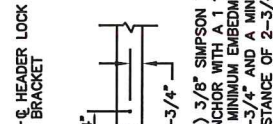
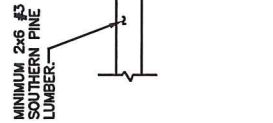
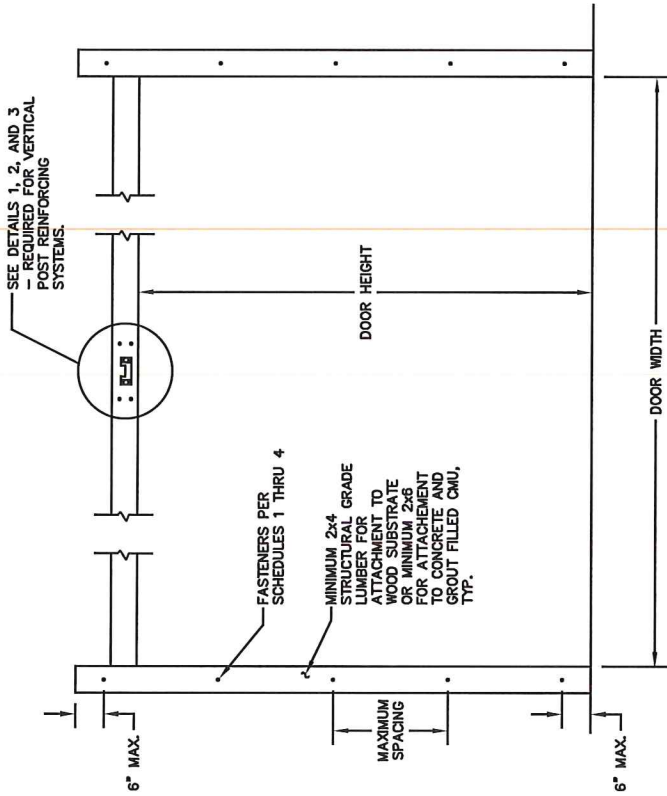
Dwayne J. Kornish, P.E.
4576 County Rd 160
Mount Hope, Ohio
FL PE 77945 TX PE 117868

The Genuine. The Original.



OVERHEAD DOOR CORPORATION
 2501 SOUTH STATE HIGHWAY 121
 SUITE 200 LEWISVILLE, TX 75067
 (800) 275-3920

REVISIONS
 R7 UPDATED TITLE BLOCK
 ESC 10/12/17



DJK
 4/13/2017

DWAYNE J. KORNISH, PE
 4578 COUNTY RD. 160
 BOYD, TX 75761
 FL. PE 177945 TX. PE 117868

PROFESSIONAL ENGINEER'S SEAL PROVIDED ONLY FOR
 VERIFICATION OF WINDOW/CONSTRUCTION DETAILS.

JAMB CONNECTION SUPPLEMENT

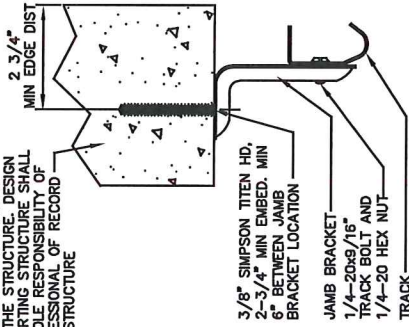
DRAWN	DATE	NAME
4/19/12	4/19/12	GRT
CHECKED		
SHEET 1 OF 2		
DRAWING PART NO.	411241	
REV.	P7	

The Genuine. The Original.



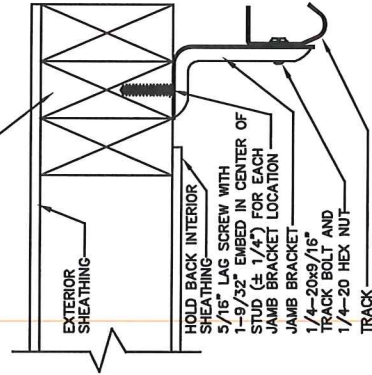
OVERHEAD DOOR CORPORATION
 2501 SOUTH STATE HIGHWAY 121
 SUITE 200 LEWISVILLE, TX 75067
 (800) 275-3920

MIN. 2000 PSI CONCRETE.
 NOTE: MAX ALLOWABLE FASTENER
 LOAD MAY EXCEED THE DESIGN
 LOAD OF THE STRUCTURE. DESIGN
 OF SUPPORTING STRUCTURE SHALL
 BE THE SOLE RESPONSIBILITY OF
 THE PROFESSIONAL OF RECORD
 FOR THE STRUCTURE.



DIRECT CONCRETE MOUNTING DETAIL

MIN 2 x 4 SFF (G=0.42) OR BETTER WALL STUD
 NOTE: MAX ALLOWABLE FASTENER LOAD MAY
 EXCEED THE DESIGN LOAD OF THE STRUCTURE.
 DESIGN OF SUPPORTING STRUCTURE SHALL BE
 THE SOLE RESPONSIBILITY OF THE PROFESSIONAL
 OF RECORD FOR THE STRUCTURE



DIRECT WOOD MOUNTING DETAIL
 MAX. 420 LBS. PER LAG FASTENER



DWAYNE J. KORNISH, PE
 4301 UNIVERSITY RD. 100
 SUITE 1000
 FORT WORTH, TX 76104
 FL. PE 77945 TX. PE 117868

PROFESSIONAL ENGINEER'S SEAL PROVIDED ONLY FOR
 VERIFICATION OF WINDLOAD CONSTRUCTION DETAILS.

REVISIONS
 R7 UPDATED TITLE BLOCK
 ESC 10/12/17

DATE	NAME
4/19/12	GRT

SHEET 2 OF 2

CHECKED

DRAWING PART NO.
 411241
 REV.
 P7

JAMB CONNECTION SUPPLEMENT