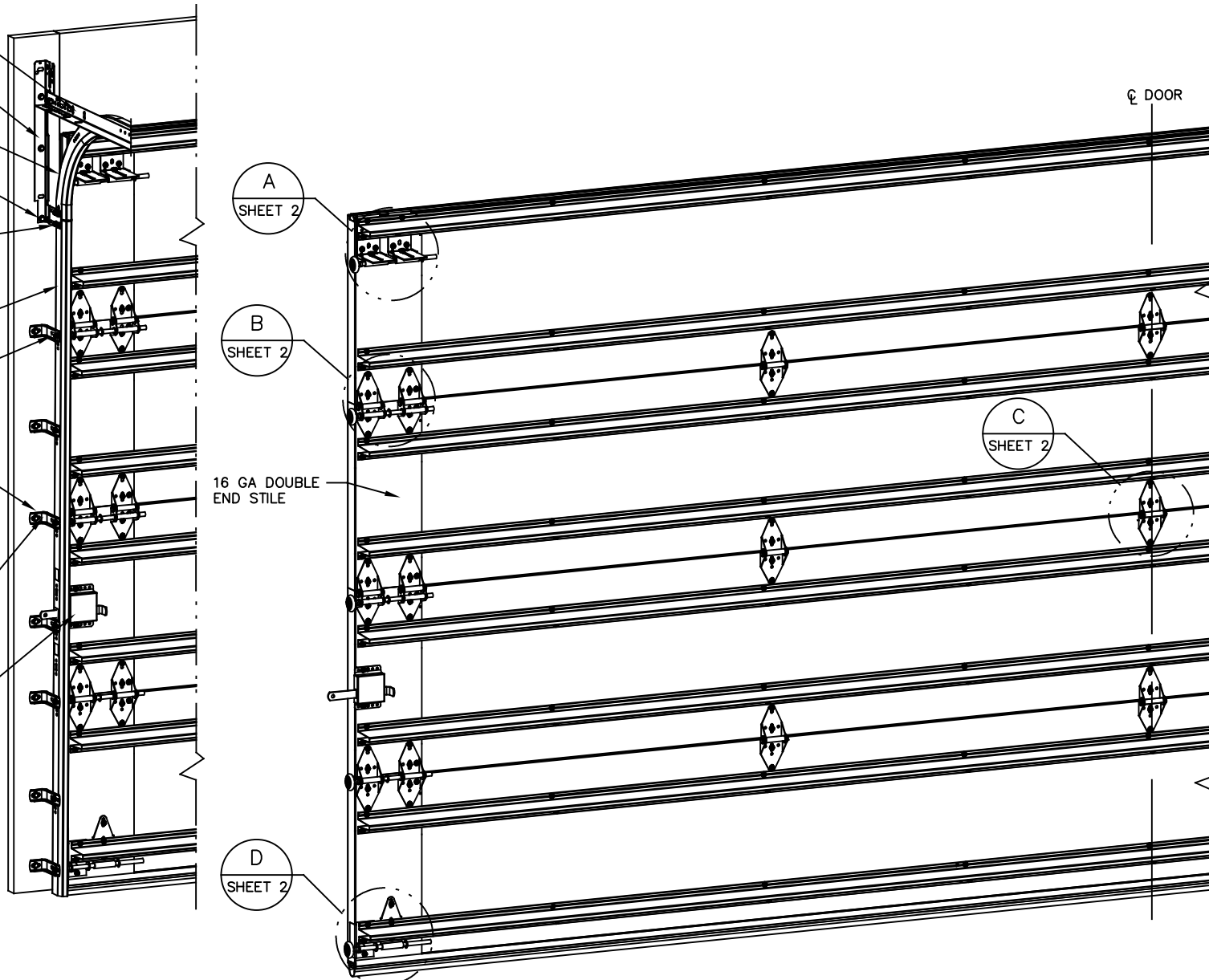


- NOTES:
- VINYL OR WOOD DOOR STOP NAILED A MAXIMUM OF 6" O.C. MUST OVERLAP TOP AND BOTH ENDS OF PANELS MINIMUM 7/16" TO MEET NEGATIVE PRESSURES.
  - KEY LOCK, SLIDE LOCKS, OR OPERATOR REQUIRED.
  - LOUVER OPTION - .040" MINIMUM LOUVERS IN MOLDED FRAMES SCREWED TOGETHER WITH A MINIMUM OF (10) #8x1" SCREWS (3X ALONG THE HORIZONTAL AND 2X ALONG THE VERTICAL) INSTALLED IN THE BOTTOM SECTION. MAXIMUM LOUVER DIMENSIONS SHALL BE 15" x 19" CUTOUT. LOUVERS ARE NOT IMPACT RESISTANT AND DO NOT MEET THE REQUIREMENTS FOR WIND-BORNE DEBRIS REGIONS.
  - FACER STEEL TO HAVE A MINIMUM 27 GA THICKNESS AND BACKER STEEL TO HAVE A MINIMUM 29 GA THICKNESS.
  - A 4-1/2" x 6" x 22 GA BACKER PLATE IS TO BE LOCATED AT EVERY INTERMEDIATE AND OUTER END HINGE LOCATION.
  - THE DESIGN OF THE SUPPORTING STRUCTURAL ELEMENTS SHALL BE THE RESPONSIBILITY OF THE PROFESSIONAL OF RECORD FOR THE BUILDING OR STRUCTURE AND IN ACCORDANCE WITH CURRENT BUILDING CODES FOR THE LOADS LISTED ON THIS DRAWING.
  - DOOR JAMB TO BE MINIMUM 2x4 STRUCTURAL GRADE LUMBER. REFER TO JAMB CONNECTION SUPPLEMENT FOR ATTACHMENT TO SUPPORTING STRUCTURE.
  - FOR LOW HEAD ROOM LIFT CONDITIONS, TOP BRACKET SHALL BE A 13 GA LHR 7/4 TOP BRACKET WITHOUT PUSHNUTS AND WITH A MINIMUM OF (3) 1/4-14x7/8" SELF DRILLING CRIMP TITE SCREWS IN LIEU OF THE BRACKET SHOWN ON THIS DRAWING. U-BAR ON TOP SECTION SHALL BE INSTALLED ON TOP OF LHR TOP BRACKETS.

- 13 GA HORIZ ANGLE
- 13 GA FLAG ANGLE
- 16 GA MIN HORIZ TRACK
- 5/16x1-5/8" LAG SCREW (MIN 3 AS SHOWN)
- (4) 1/4-20x9/16" LARGE HEAD TRACK BOLTS OR 1/4-20 STUDS WITH 1/4-20 HEX NUTS
- 15 GA MIN VERT TRACK
- 1/4-20x9/16" TRACK BOLT AND 1/4-20 HEX NUT AT EACH JB-US JAMB BRACKET LOCATION
- 5/16x1-5/8" LAG SCREW AT EACH JAMB BRACKET
- 15 GA STIFFENED JAMB BRACKETS SEE SCHEDULE FOR QUANTITY, LOCATION, AND TYPE
- KEY LOCK OR SLIDE LOCK EACH END (NOT REQUIRED WITH OPERATOR - SEE NOTE 2). SLIDE LOCK SHOWN FOR CLARITY



| REVISIONS |     |                        |            |          |
|-----------|-----|------------------------|------------|----------|
| ER        | REV | DESCRIPTION            | DATE       | APPROVAL |
|           | C   | REV TITLE BLOCK        | 10/2/2017  | ESC      |
| 32177     | D   | ADD MODEL# 7655        | 11/15/2019 | TLC      |
| 32442     | E   | ADDED NYLON ROLLER OPT | 8/2/2020   | TLC      |
| 32442     | F   | ADDED IRC/IBC NOTE     | 8/19/2020  | TLC      |

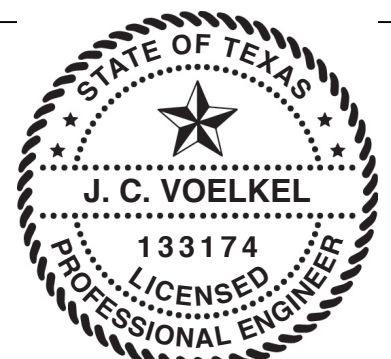
| STATIC PRESSURE RATINGS           | APPROVED SIZES          |
|-----------------------------------|-------------------------|
| DESIGN PRESSURE(PSF): +20.1/-22.5 | MAX WIDTH: 22'-2"       |
| IMPACT/CYCLIC RATED: NO           | MAX HEIGHT: 24'         |
|                                   | MAX SECTION HEIGHT: 24' |

| SUPERIMPOSED DESIGN PRESSURE LOADS ON SUPPORTING STRUCTURE |             |                              |
|--|-------------|------------------------------|
| DOOR WIDTH   | DOOR HEIGHT | UNIFORM LOAD EACH JAMB (PLF) |
| 20'-2"   | ALL         | +204.9/-228.8                |
| 22'-2"   | ALL         | +225.0/-251.3                |

| JAMB BRACKET SCHEDULE |                 |                                  |   |
|-----------------------|-----------------|----------------------------------|---|
| DOOR HEIGHT           | NO. OF SECTIONS | NO. OF JAMB BRACKETS (EACH JAMB) | LOCATION OF CENTERLINE OF JAMB BRACKETS MEASURED FROM BOTTOM OF TRACK (ALL DIMENSIONS ± 2")                           |
| 6'-6"                 | 4               | 7                                | 2" (JB-US), 10" (JB-US), 21-3/4" (JB-US), 29-3/4" (JB-US), 39" (JB-US), 48" (JB-US), 57-1/4" (JB-US)                  |
| 7'-0"                 | 4               | 7                                | 2" (JB-US), 10" (JB-US), 21-3/4" (JB-US), 29-3/4" (JB-US), 42" (JB-US), 52-1/2" (JB-US), 63-1/4" (JB-US)              |
| 7'-6"                 | 4 OR 5          | 8                                | 2" (JB-US), 10" (JB-US), 18-3/4" (JB-US), 26-3/4" (JB-US), 36" (JB-US), 45" (JB-US), 54-1/4" (JB-US), 74-1/2" (JB-US) |
| 8'-0"                 | 4 OR 5          | 8                                | 2" (JB-US), 10" (JB-US), 21-3/4" (JB-US), 29-3/4" (JB-US), 39" (JB-US), 48" (JB-US), 57-1/2" (JB-US), 75-1/2" (JB-US) |
| > 8'-0"               |                 |                                  | SEE NOTE BELOW  |

NOTE:  
 (JB-US) FOLLOWING DIMENSION DENOTES SLOTTED JAMB BRACKET ATTACHED TO TRACK WITH 1/4-20x9/16" TRACK BOLT AND NUT AS SHOWN ABOVE.  
 ALL DOORS GREATER THAN 8' IN HEIGHT REQUIRE USE OF CONTINUOUS WALL ANGLE. SEE SUPPLEMENT TRACK CHART FOR DETAILS.

THE DOORS ARE DESIGNED AND MANUFACTURED TO COMPLY WITH THE 2018 IRC AND THE 2018 IBC.



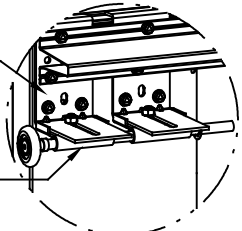
J. CHRISTIAN VOELKEL, PE  
 312 N. NEW WARRINGTON RD, UNIT 1A  
 PENSACOLA, FL  
 FL PE 82229  
 TX PE 133174

PROFESSIONAL ENGINEER'S SEAL PROVIDED ONLY FOR VERIFICATION OF WIND LOAD CONSTRUCTION DETAILS.

| THE DRAWINGS AND ALL OTHER INFORMATION CONTAINED HEREIN ARE THE CONFIDENTIAL AND PROPRIETARY PROPERTY OF OVERHEAD DOOR CORPORATION AND ITS AFFILIATED COMPANIES. THIS DRAWING AND INFORMATION, IN WHOLE OR IN PART, MAY NOT BE COPIED IN ANY MANNER OR DISCLOSED TO ANYONE WITHOUT THE PRIOR WRITTEN CONSENT OF OVERHEAD DOOR CORPORATION. NO DISCLOSURE OF ANY OF THIS DRAWING OR INFORMATION IS INTENDED TO OPERATE AS A LICENSE OR AUTHORIZATION TO USE IT FOR ANY PURPOSE WITHOUT THE SPECIFIC WRITTEN CONSENT OF OVERHEAD DOOR CORPORATION. |         |   |   |                         |                            |              |          |                                       |  |
|--|---------|---|---|-------------------------|----------------------------|--------------|----------|---------------------------------------|--|
| REF DWG  | USED ON | THIRD ANGLE PROJECTION  | TOLERANCES UNLESS OTHERWISE SPECIFIED   | FINISH                  | The Genuine. The Original. | NAME         | DATE     | DRAWING TITLE                         |  |
|  |         |   | HOLE DIAMETER<br>UNDER .251 +.004/-0.003<br>.251 TO .500 +.006/-0.003<br>OVER .500 +.008/-0.003 | N/A                     |                            | G. TAYLOR    | 10/25/13 | SERIES 5745/5765/7565<br>7655/515/525 |  |
|  |         | ASME Y14.100 AND Y14.5<br>APPLY UNLESS OTHERWISE SPECIFIED DIMENSIONS ARE IN U.S. CUSTOMARY UNITS | FRACTIONS<br>± 1/16   | UNIT OF MEASURE<br>EACH | MATERIAL                   | CHECKED BY:  |          | DRAWING NUMBER<br>D-411332            |  |
|  |         |   | WHOLE NUMBERS: ± .25<br>.XX ± .03<br>.XXX ± .010<br>ANGLES: ± .5°                               |                         | NONE                       | APPROVED BY: |          | SCALE: N.T.S.   SHEET 1 OF 2          |  |

| REVISIONS |                        |            |          |  |
|-----------|------------------------|------------|----------|--|
| REV       | DESCRIPTION            | DATE       | APPROVAL |  |
| C         | REV TITLE BLOCK        | 10/2/2017  | ESC      |  |
| D         | ADD MODEL# 7655        | 11/15/2019 | TLC      |  |
| E         | ADDED NYLON ROLLER OPT | 8/2/2020   | TLC      |  |
| F         | ADDED IRC/IBC NOTE     | 8/19/2020  | TLC      |  |

(2) 12 GA COMMERCIAL 'L' FRAME TOP BRACKETS ATTACHED WITH (4) 1/4-20x7/8" SELF DRILLING SCREWS (2 THROUGH STRUT AND TOP BRACKET)

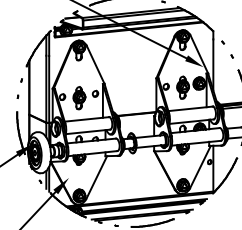


13 GA ROLLER SLIDE ATTACHED TO BRACKET WITH 5/16-18 BOLT & NUT IN THE CENTER SLOT

ADD (2) 1/4-14x7/8" SELF DRILLING CRIMP TITE SCREWS (INSIDE OF EACH INSIDE END HINGE)

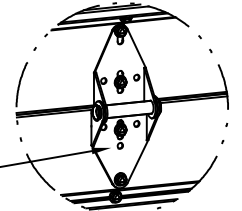
DETAIL A

2" STEEL ROLLER WITH 9" GRADE 1144 OR EQUIVALENT STEM AND 7/16" PUSH NUT AT EACH ROLLER LOCATION LOCATED BETWEEN THE BRACKET OR HINGE (EXCEPT PUCHNUT LOCATED ON THE TOP AND BOTTOM ROLLER IS LOACTED OUTSIDE OF BOTH BRACKETS). 1/4" MAX BETWEEN PUSH NUT AND OUTER HINGE.



DETAIL B

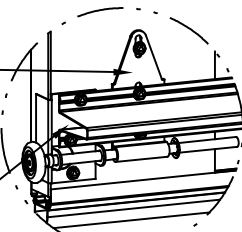
(2) 14 GA WIDE BODY END HINGES EACH ATTACHED WITH (4) 1/4-14x7/8" SELF DRILLING CRIMP TITE SCREWS



DETAIL C

14 GA WIDE BODY INTERMEDIATE HINGE ATTACHED WITH (4) 1/4-14x7/8" SELF DRILLING CRIMP TITE SCREWS

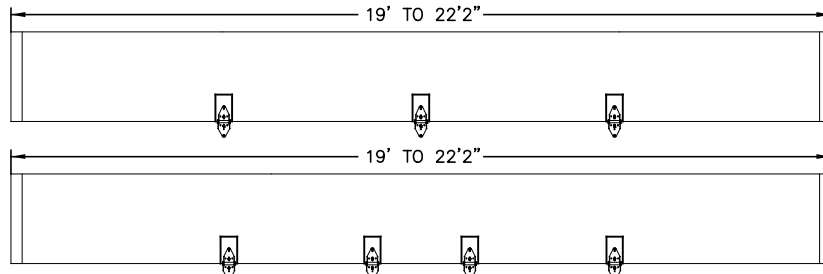
12 GA EXTENSION BRACKET ATTACHED WITH (3) 1/4-14x7/8" SELF DRILLING CRIMP TITE SCREWS (2 THROUGH STRUT AND BRACKET)



DETAIL D

14 GA BOTTOM BRACKET ATTACHED WITH (2) 1/4-14x7/8" SELF DRILLING CRIMP TITE SCREWS THROUGH STRUT AND BOTTOM BRACKET AND (1) 1/4-14x5/8" SELF DRILLING TAMPER RESISTANT SCREW

HINGE & BACKER PLATE LOCATIONS



(10) SECTION DOORS WITH (20) 3" 18 GA 80 KSI U-BARS LOCATED AS SHOWN

(9) SECTION DOORS WITH (18) 3" 18 GA 80 KSI U-BARS LOCATED AS SHOWN

(8) SECTION DOORS WITH (16) 3" 18 GA 80 KSI U-BARS LOCATED AS SHOWN

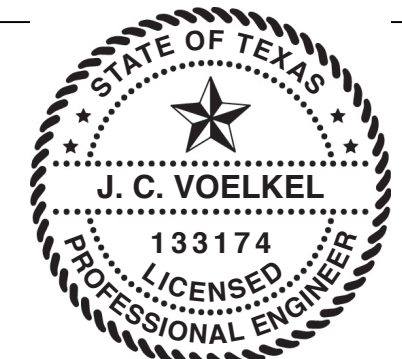
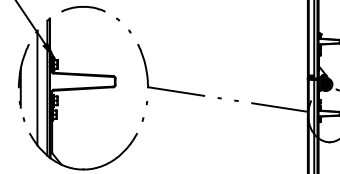
(7) SECTION DOORS WITH (14) 3" 18 GA 80 KSI U-BARS LOCATED AS SHOWN

(6) SECTION DOORS WITH (12) 3" 18 GA 80 KSI U-BARS LOCATED AS SHOWN

(5) SECTION DOORS WITH (10) 3" 18 GA 80 KSI U-BARS LOCATED AS SHOWN

(4) SECTION DOORS WITH (8) 3" 18 GA 80 KSI U-BARS LOCATED AS SHOWN

ALL U-BARS SHALL BE ATTACHED WITH (2) 1/4-14x7/8" SELF DRILLING CRIMP TITE SCREWS AT EACH HINGE LOCATION AND BETWEEN ALL END HINGES AND INTERMEDIATE HINGES. A MINIMUM OF (14) FASTENERS ARE TO BE USED.



J. CHRISTIAN VOELKEL, PE  
312 N. NEW WARRINGTON RD, UNIT 1A  
PENSACOLA, FL  
FL PE 82229  
TX PE 133174

PROFESSIONAL ENGINEER'S SEAL PROVIDED ONLY FOR VERIFICATION OF WIND LOAD CONSTRUCTION DETAILS.

THE DOORS ARE DESIGNED AND MANUFACTURED TO COMPLY WITH THE 2018 IRC AND THE 2018 IBC.

|  |         |                                       |                           |                      |        |                 |               |                   |              |                |
|--|---------|---------------------------------------|---------------------------|----------------------|--------|-----------------|---------------|-------------------|--------------|----------------|
| THE DRAWINGS AND ALL OTHER INFORMATION CONTAINED HEREIN ARE THE CONFIDENTIAL AND PROPRIETARY PROPERTY OF OVERHEAD DOOR CORPORATION AND ITS AFFILIATED COMPANIES. THIS DRAWING AND INFORMATION, IN WHOLE OR IN PART, MAY NOT BE COPIED IN ANY MANNER OR DISCLOSED TO ANYONE WITHOUT THE PRIOR WRITTEN CONSENT OF OVERHEAD DOOR CORPORATION. NO DISCLOSURE OF ANY OF THIS DRAWING OR INFORMATION IS INTENDED TO OPERATE AS A LICENSE OR AUTHORIZATION TO USE IT FOR ANY PURPOSE WITHOUT THE SPECIFIC WRITTEN CONSENT OF OVERHEAD DOOR CORPORATION. |         |                                       |                           |                      |        |                 |               |                   |              |                |
| REF DWG  | USED ON | TOLERANCES UNLESS OTHERWISE SPECIFIED | HOLE DIAMETER             |                      | FINISH | UNIT OF MEASURE | MATERIAL      | NAME              | DATE         | DRAWING TITLE  |
|  |         |                                       | UNDER .251 +.004/-0.003   | WHOLE NUMBERS: ± .25 |        |                 |               |                   |              |                |
|  |         |                                       | .251 TO .500 +.006/-0.003 | .X ± .1              | EACH   | NONE            | OVERHEAD DOOR | LEWISVILLE, TEXAS | CHECKED BY:  | DRAWING NUMBER |
|  |         |                                       | OVER .500 +.008/-0.003    | .XX ± .03            |        |                 |               |                   |              |                |
|  |         |                                       | FRACTIONS ± 1/16          | .XXX ± .010          |        |                 |               |                   | APPROVED BY: | SCALE: N.T.S.  |
|  |         |                                       |                           | ANGLES: ± .5°        |        |                 |               |                   |              | SHEET 2 OF 2   |