

Window Options:
 1/8" DSB
 1/4" Tempered Glass
 7/16" Insulated Glass
 7/16" Tempered Insulated Glass

Door Height	Section	Quantity	Strut	Per Side
6'-0" to 8'-0"	4	8	5	5
8'-3" to 10'-0"	5	10	7	7
10'-3" to 12'-0"	6	12	9	9
12'-3" to 14'-0"	7	14	11	11
14'-3" to 16'-0"	8	16	13	13
16'-3" to 18'-0"	9	18	15	15
18'-3" to 20'-0"	10	20	17	17
20'-3" to 22'-0"	11	22	19	19
22'-3" to 24'-0"	12	24	21	21

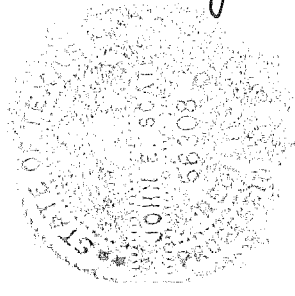
Track bracket quantities shown are for use with grade 2 or better southern pine jambs. When using softer wood species like spruce-pine-fir (SPF) use the quantity of track brackets specified in the chart plus three track brackets per side.

Supplemental instructions contain details for doors up to 24'-0" high. These are required in addition to this drawing for installation. Always use supplemental instructions in addition to this drawing during door installation.

Model:	Quantity
3212, 3216, 3285	2-18-2013

38.2 (psf) / - 42.6 (psf) at 12'-02" through
 33.2 (psf) / - 37.1 (psf) at 17'-04"

C.H.I. Drawing: TZ9-16-67313
 page 1_of_2



John E. Scates
 2/22/13
 John E. Scates, P.E.
 3121 Fairgate Drive
 Carrollton, Texas 75007
 TXPE 56308, F-2203

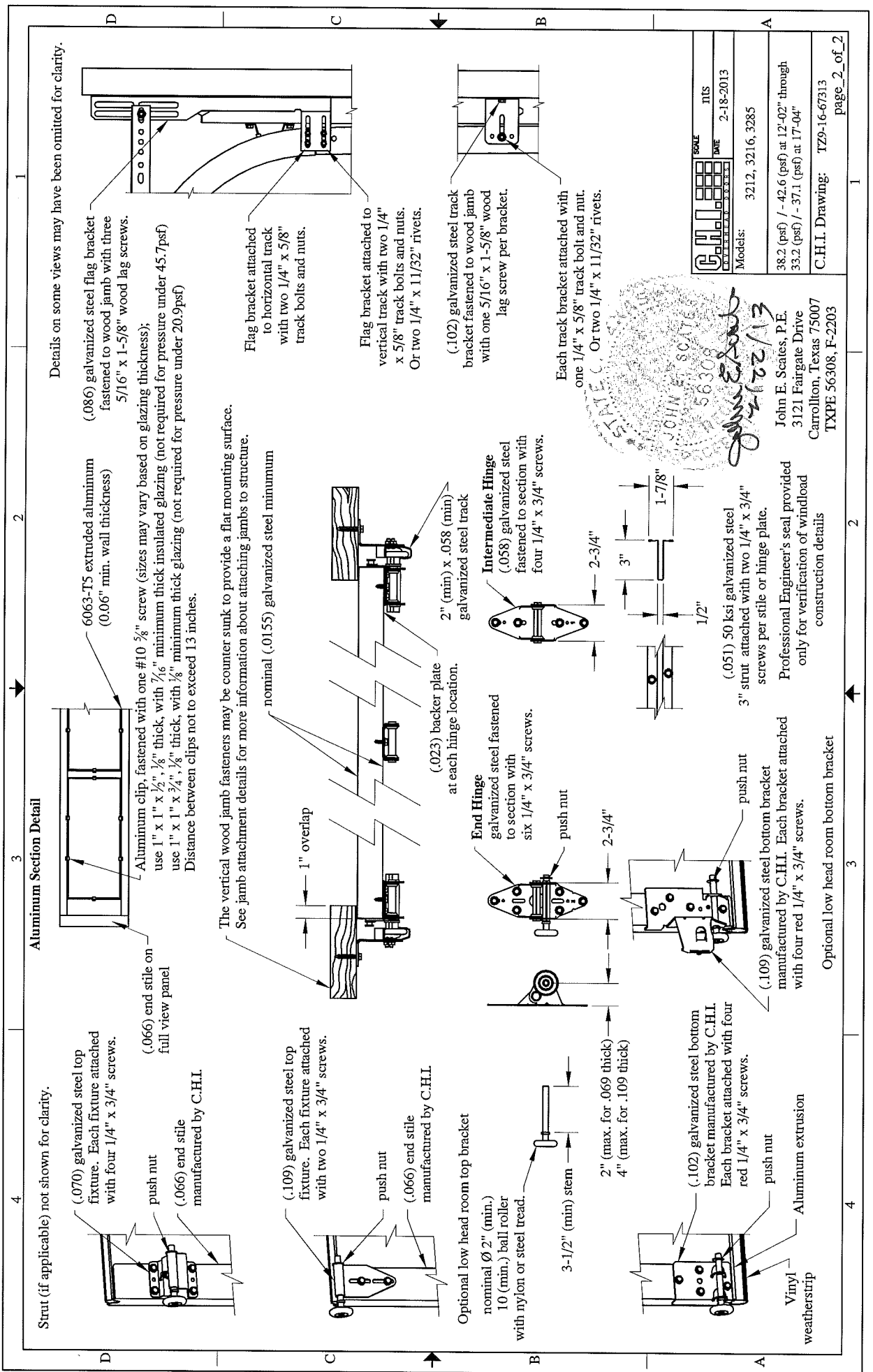
Professional Engineer's seal provided only for verification of windload construction details

This door has been evaluated per ASCE 7-02 & 7-05 as referenced by 2006 IBC 1609 & 2006 IRC 301, in accordance with ANSD/DASMA 108-02, 108-05, & ASTM E330-02. Design Pressures (DP) typically meet requirements for the following exposure B wind speeds. These wind speeds are for 8' high doors on buildings with a flat roof height less than 30 feet.

Door Width	With and Without Design Pressure	Exp B	Backer Plates
17'-04"	33.2 / - 37.1 (psf)	155 (mph)	4
16'-02"	38.2 / - 42.6 (psf)	166 (mph)	3
15'-02"	38.2 / - 42.6 (psf)	166 (mph)	3
14'-02"	38.2 / - 42.6 (psf)	165 (mph)	3
13'-02"	38.2 / - 42.6 (psf)	165 (mph)	3
12'-02"	38.2 / - 42.6 (psf)	164 (mph)	2

Backer plate quantity is minimum per section.

Supporting structural elements to be designed by registered professional engineer for specified wind loads. If door is not electrically operated, a lock must be installed.
 Door height: 24'-0" max
 Section height: 24" max



Aluminum Section Detail

Strut (if applicable) not shown for clarity.

(.070) galvanized steel top fixture. Each fixture attached with four 1/4" x 3/4" screws.

push nut

(.066) end stile manufactured by C.H.I.

(.066) end stile on full view panel

Aluminum clip, fastened with one #10 5/8" screw (sizes may vary based on glazing thickness); use 1" x 1" x 1/2", 1/8" thick, with 1/16" minimum thick insulated glazing (not required for pressure under 45.7psf) use 1" x 1" x 3/4", 1/8" thick, with 1/8" minimum thick glazing (not required for pressure under 20.9psf) Distance between clips not to exceed 13 inches.

6063-T5 extruded aluminum (0.06" min. wall thickness)

(.086) galvanized steel flag bracket fastened to wood jamb with three 5/16" x 1-5/8" wood lag screws.

Flag bracket attached to horizontal track with two 1/4" x 5/8" track bolts and nuts.

Flag bracket attached to vertical track with two 1/4" x 5/8" track bolts and nuts.

Or two 1/4" x 11/32" rivets.

(.102) galvanized steel track bracket fastened to wood jamb with one 5/16" x 1-5/8" wood lag screw per bracket.

Each track bracket attached with one 1/4" x 5/8" track bolt and nut. Or two 1/4" x 11/32" rivets.

The vertical wood jamb fasteners may be counter sunk to provide a flat mounting surface. See jamb attachment details for more information about attaching jambs to structure.

nominal (.0155) galvanized steel minimum

2" (min) x .058 (min) galvanized steel track

Intermediate Hinge (.058) galvanized steel fastened to section with four 1/4" x 3/4" screws.

End Hinge galvanized steel fastened to section with six 1/4" x 3/4" screws.

push nut

(.023) backer plate at each hinge location.

1" overlap

Optional low head room top bracket nominal Ø 2" (min.) 10 (min.) ball roller with nylon or steel tread.

3-1/2" (min) stem

2" (max. for .069 thick) 4" (max. for .109 thick)

(.102) galvanized steel bottom bracket manufactured by C.H.I. Each bracket attached with four red 1/4" x 3/4" screws.

push nut

Aluminum extrusion

Vinyl weatherstrip

(.109) galvanized steel bottom bracket manufactured by C.H.I. Each bracket attached with four red 1/4" x 3/4" screws.

push nut

3" strut attached with two 1/4" x 3/4" screws per stile or hinge plate.

(.051) 50 ksi galvanized steel screws per stile or hinge plate.

Professional Engineer's seal provided only for verification of windload construction details

Optional low head room bottom bracket

Details on some views may have been omitted for clarity.

SCALE	ITIS
DATE	2-18-2013
Models:	3212, 3216, 3285
	38.2 (psf) / - 42.6 (psf) at 12'-02" through
	33.2 (psf) / - 37.1 (psf) at 17'-04"
	C.H.I. Drawing: TZ9-16-67313
	page_2_of_2

JOHN E. SCATES
56308
1/22/13

John E. Scates, P.E.
3121 Fairgate Drive
Carrllton, Texas 75007
TXPE 56308, F-2203