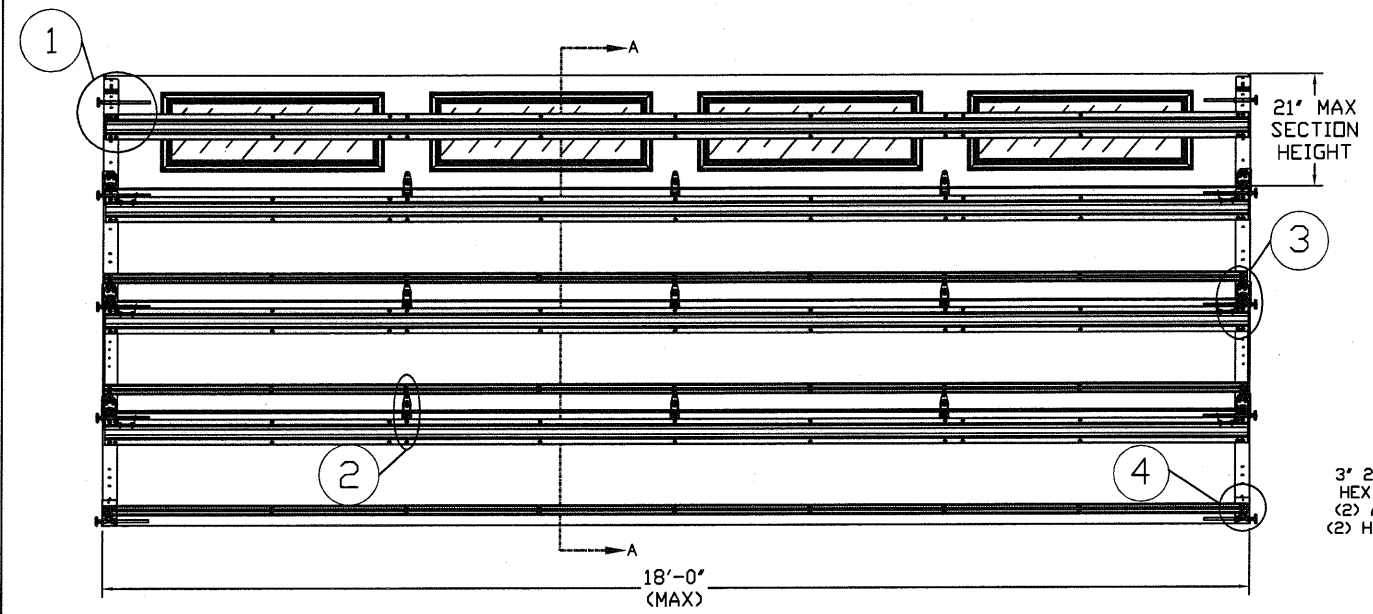


SECTION A-A (SIDE VIEW)
N.T.S.



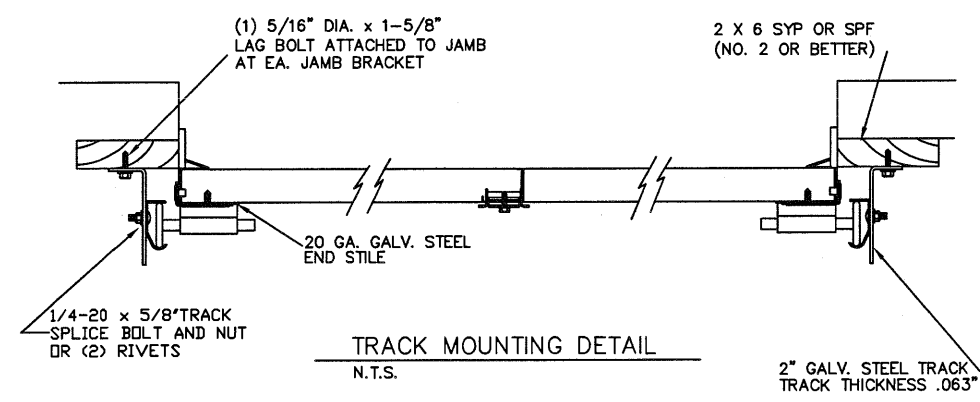
INSIDE ELEVATION
N.T.S.

LARGE MISSILE IMPACT RESISTANT

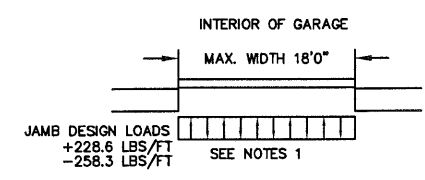
- SPECIFICATIONS AND NOTES**
- DOORS AND HARDWARE WILL BE DESIGNED, MANUFACTURED AND INSTALLED WITH STANDARDS AS SET FORTH BY DASMA. EACH VERTICAL JAMBS RECEIVES MAXIMUM DESIGN LOADS OF: +228.6 LBS/FT & -258.3 LBS/FT
 - DOOR SECTIONS SHALL BE 27 GA. MIN. (.0151") ROLLED FORMED LIGHT COMMERCIAL QUALITY
 - SUPPORTING STRUCTURAL ELEMENTS SHALL BE DESIGNED BY A REGISTERED PROFESSIONAL ENGINEER FOR WIND LOADS INDICATED ON THIS DRAWING IN ADDITION TO OTHER LOADINGS.

THE METHOD OF TESTING WAS IN SUBSTANTIAL CONFORMANCE WITH THE PROCEDURE DESCRIBED IN DASMA 108. THE PRESSURES SHOWN ON THE DRAWINGS WERE CALCULATED USING ASCE 7-98/02/05 WITH THE FOLLOWING PARAMETERS (5 FEET OF DOOR WIDTH IN THE END ZONE, ROOF AT ANY SLOPE, AND I=1.0):

WIND SPEED (MPH)	130	118	112	107	103
EXPOSURE LEVEL	B	C	C	D	D
MEAN ROOF HEIGHT	30'	15'	25'	15'	25'



TRACK MOUNTING DETAIL
N.T.S.



REV	DESCRIPTION OF REVISIONS	DATE	BY

MAX SIZE
18' WIDTH
14' HEIGHT
(DOOR HEIGHT SUBJECT TO WEIGHT LIMITATIONS)

DESIGN LOADS
+25.4 PSF
-28.7 PSF

TEST LOADS
+38.1 PSF
-43.1 PSF

LARGE MISSILE IMPACT RESISTANCE

Thomas L. Shelmerdine, PE (TX PE #85829)
Structural Solutions, PA (TX Firm #004063)

STATE OF TEXAS
THOMAS L. SHELMERDINE
85829
PROFESSIONAL ENGINEER
TX

5921-G W. Friendly Ave., Greensboro, NC 27410

ENTRE/MATIC

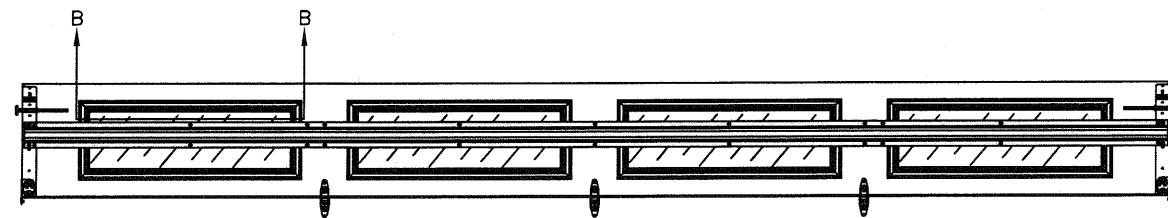
165 CARRIAGE COURT WINSTON-SALEM, N.C. 27105

MODEL #1500 STRATFORD 3000
MODEL #1200 HERITAGE 3000
MODEL #1550 OAK SUMMIT 3000
SHORT, LONG, FLUSH & OAK SUMMIT PANELS

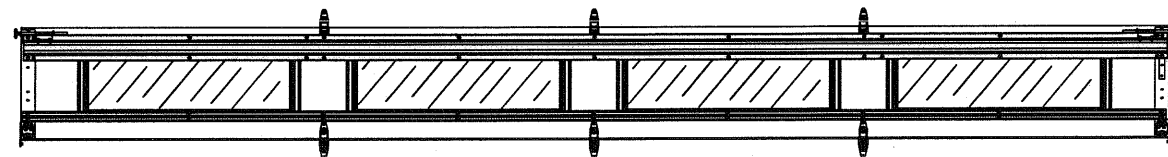
SIZE	DRAWN BY	RLR	DATE	10/16/14	DRAWING NUMBER
B	CHECKED BY		DATE		IRC-1518-130-24-1

SHEET 1 OF 3

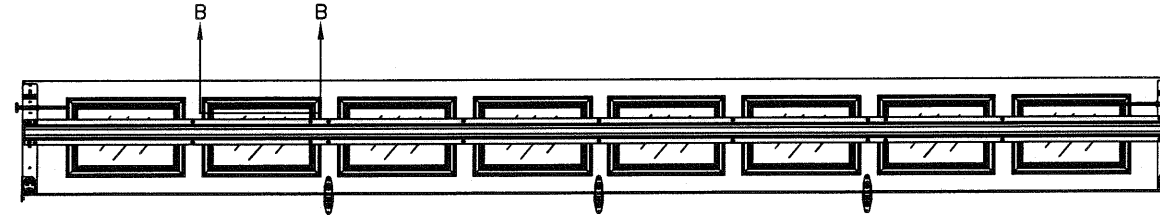
OPTIONAL SHORT AND LONG PANEL GLAZING LAYOUTS



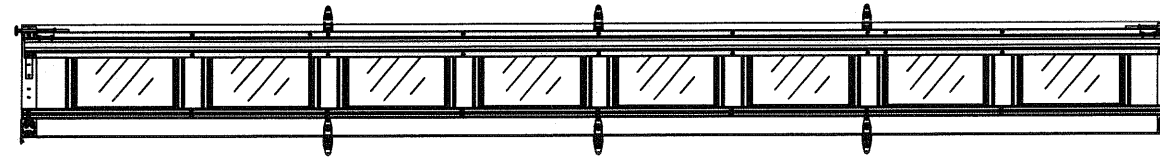
TOP SECTION



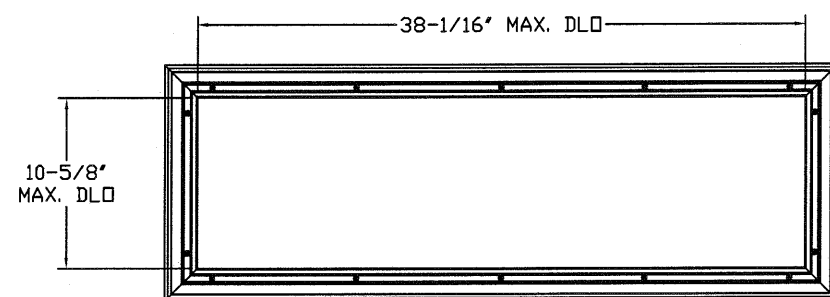
INTERMEDIATE SECTION



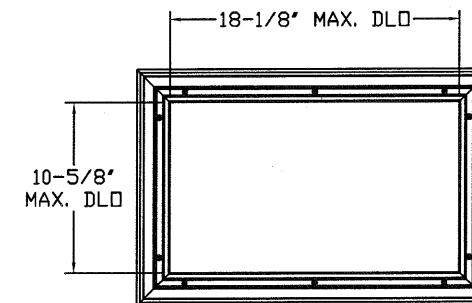
TOP SECTION



INTERMEDIATE SECTION

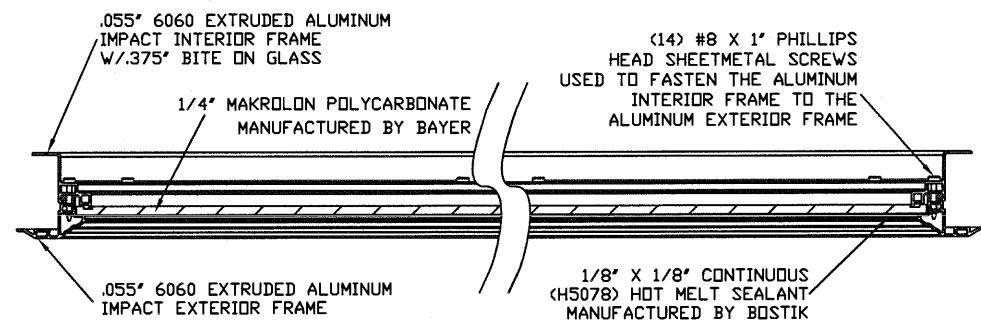


LONG PANEL IMPACT GLAZING FASTENER DETAIL
N.T.S.



SHORT PANEL IMPACT GLAZING FASTENER DETAIL
N.T.S.

WOOD JAMB ATTACHMENT TO STRUCTURE



SECTION B-B IMPACT WINDOW DETAIL
N.T.S.

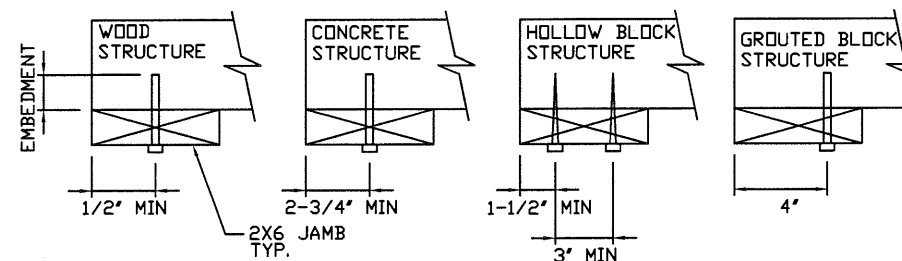
2 X 6 VERTICAL JAMB ATTACHMENT TO WOOD FRAME STRUCTURE
 5/16" X 3" LAG SCREWS STARTING 6" FROM ENDS THEN 20" O.C. (1 1/2" EMBEDMENT)

2 X 6 VERTICAL JAMB ATTACHMENT TO 2,000 PSI CONCRETE
 HILTI KWIK BOLT 3/8" X 4" STARTING 6" FROM ENDS THEN 24" O.C. (2 1/2" EMBEDMENT)
 HILTI SLEEVE ANCHOR 3/8" X 2-3/4" STARTING 6" FROM ENDS THEN 18" O.C. (1 1/4" EMBEDMENT)
 ITW/RAMSET REDHEAD (TRU-BOLT) 3/8" X 4" STARTING 6" FROM ENDS THEN 24" O.C. (2 1/2" EMBEDMENT)

2 X 6 VERTICAL JAMB ATTACHMENT TO HOLLOW C-90 BLOCK
 SIMPSON 1/4" X 3" TITEN SCREWS STARTING 6" FROM ENDS, USE PAIRS OF FASTENERS (3" APART) AT 8" O.C. (1 1/2" EMBEDMENT)
 HILTI 1/4" X 2-3/4" KWIK-CON II+ SCREWS STARTING 6" FROM ENDS, USE PAIRS OF FASTENERS (3" APART) AT 8" O.C. (1 1/4" EMBEDMENT)

2 X 6 VERTICAL JAMB ATTACHMENT TO GROUTED C-90 BLOCK (2000 PSI GROUT)
 HILTI SLEEVE ANCHOR 3/8" X 2-3/4" STARTING 6" FROM ENDS THEN 22" O.C. (1 1/4" EMBEDMENT) (OR, USE FASTENERS FOR HOLLOW C-90 BLOCK)

*LAGS AND BOLTS CAN BE COUNTERSUNK TO PROVIDE A FLUSH MOUNTING SURFACE.
 *PREPARATION OF WOOD JAMBS BY OTHERS



REV	DESCRIPTION OF REVISIONS	DATE	BY

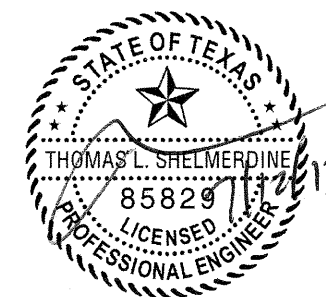
MAX SIZE
 18' WIDTH
 14' HEIGHT
 (DOOR HEIGHT SUBJECT TO WEIGHT LIMITATIONS)

DESIGN LOADS
 +25.4 PSF
 -28.7 PSF

TEST LOADS
 +38.1 PSF
 -43.1 PSF

LARGE MISSILE IMPACT RESISTANCE

Thomas L. Shelmerdine, PE (TX PE #85829)
 Structural Solutions, PA (TX Firm #F-004063)



5921-G W. Friendly Ave., Greensboro, NC 27410

ENTRE/MATIC

165 CARRIAGE COURT WINSTON-SALEM, N.C. 27105

MODEL #1500 STRATFORD 3000
MODEL #1200 HERITAGE 3000
MODEL #1550 OAK SUMMIT 3000
 SHORT, LONG, FLUSH & OAK SUMMIT PANELS

SIZE	DRAWN BY	RLR	DATE	10/16/14	DRAWING NUMBER
B	CHECKED BY		DATE		IRC-1518-130-24-I

TABLE 1

DOOR HEIGHT	SECTION HEIGHTS							
	Btm	#2	#3	#4	#5	#6	#7	#8
14' 0"	21"	21"	21"	21"	21"	21"	21"	21"
13' 6"	21"	21"	21"	21"	21"	18"	18"	21"
13' 0"	21"	21"	21"	18"	18"	18"	18"	21"
12' 6"	21"	18"	18"	18"	18"	18"	18"	21"
12' 0"	21"	21"	21"	21"	21"	18"	21"	
11' 6"	21"	21"	21"	18"	18"	18"	21"	
11' 0"	21"	18"	18"	18"	18"	18"	21"	
10' 6"	21"	21"	21"	21"	21"	21"		
10' 0"	21"	21"	21"	18"	18"	21"		
9' 6"	21"	18"	18"	18"	18"	21"		
9' 0"	18"	18"	18"	18"	18"	18"		
8' 6"	21"	21"	21"	18"	21"			
8' 0"	21"	18"	18"	18"	21"			
7' 6"	18"	18"	18"	18"	18"			
7' 0"	21"	21"	21"	21"				
6' 6"	21"	18"	18"	21"				

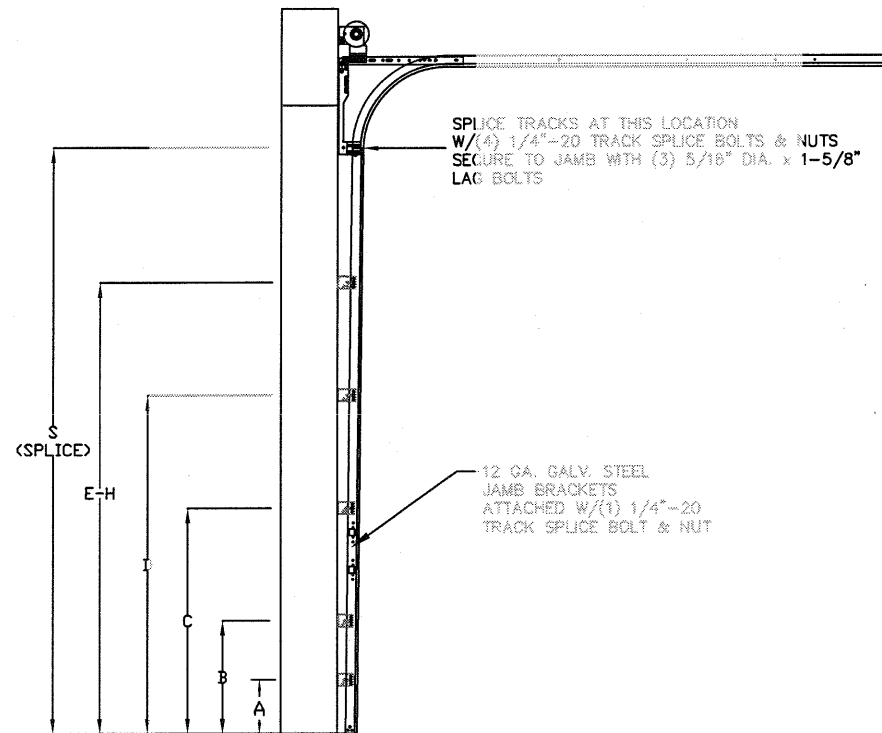
TABLE 2

DOOR HEIGHT	TRACK ATTACHMENT								SPlice
	A	B	C	D	E	F	G	H	
6' 6"	3.5"	21"	42"	63"					70"
7'	3.5"	21"	42"	63"					76"
7' 6"	3.5"	21"	42"	63"					82"
8'	3.5"	21"	42"	63"					88"
8' 6"	3.5"	21"	42"	63"	84"				94"
9'	3.5"	21"	42"	63"	84"				100"
9' 6"	3.5"	21"	42"	63"	84"				106"
3.5'	3.5"	21"	42"	63"	84"	105"			112"
10' 6"	3.5"	21"	42"	63"	84"	105"			118"
11'	3.5"	21"	42"	63"	84"	105"			124"
11' 6"	3.5"	21"	42"	63"	84"	105"			130"
12'	3.5"	21"	42"	63"	84"	105"	126"		136"
12' 6"	3.5"	21"	42"	63"	84"	105"	126"		142"
13'	3.5"	21"	42"	63"	84"	105"	126"		148"
13' 6"	3.5"	21"	42"	63"	84"	105"	126"	147"	154"
14'	3.5"	21"	42"	63"	84"	105"	126"	147"	160"

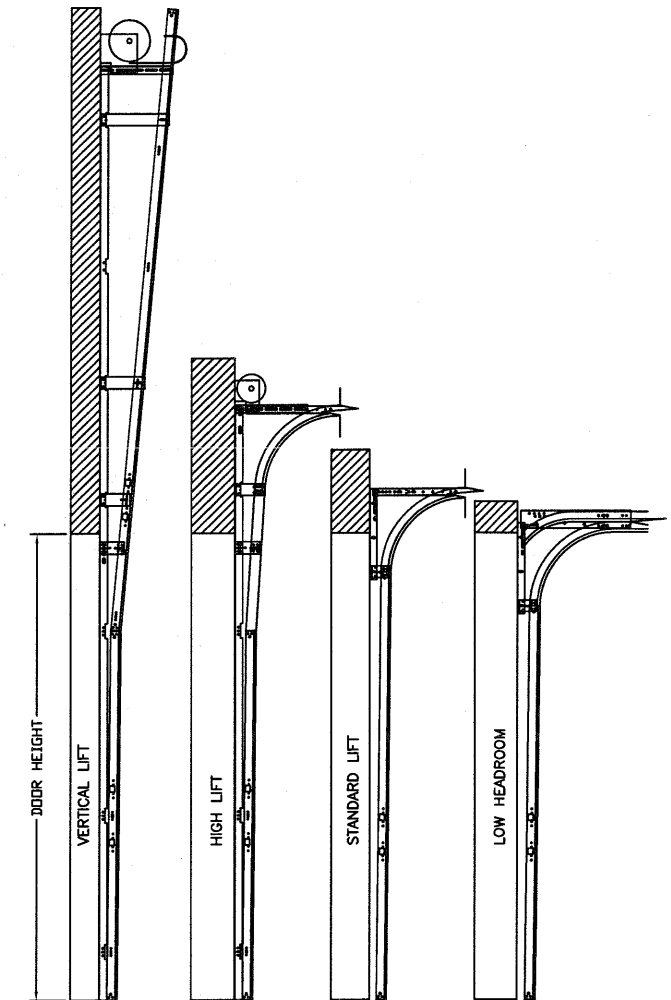
ALL TRACK ATTACHMENT SPACING +/-2' ALLOWED WITH SYP OR SPF NO. 2 OR BETTER ONLY

TABLE 3

Section	Panel Type	Center Stile Locations (Measured from Left Edge)		
		1st (in)	3rd (in)	5th (in)
16' 2"	Short	50.27	97.00	143.73
16' 2"	Long	51.17	97.00	142.83
16' 2"	Oak Summit	48.75	97.00	145.25
16' 4"	Short	51.27	98.00	144.73
16' 4"	Long	52.17	98.00	143.83
16' 4"	Oak Summit	49.08	98.00	146.92
16' 6"	Short	52.27	99.00	145.73
16' 6"	Long	51.34	99.00	146.66
16' 6"	Oak Summit	49.42	99.00	148.59
16' 8"	Short	51.34	100.00	148.66
16' 8"	Long	52.20	100.00	147.80
16' 8"	Oak Summit	49.92	100.00	150.09
16' 10"	Short	51.50	101.00	150.50
16' 10"	Long	53.20	101.00	148.80
16' 10"	Oak Summit	50.15	101.00	151.59
17' 0"	Short	53.34	102.00	150.66
17' 0"	Long	54.20	102.00	149.80
17' 0"	Oak Summit	50.92	102.00	153.09
17' 2"	Short	53.00	103.00	153.00
17' 2"	Long	55.20	103.00	150.80
17' 2"	Oak Summit	51.42	103.00	154.59
17' 4"	Short	54.00	104.00	154.00
17' 4"	Long	56.20	104.00	151.80
17' 4"	Oak Summit	51.92	104.00	156.09
17' 6"	Short	55.00	105.00	155.00
17' 6"	Long	57.20	105.00	152.80
17' 6"	Oak Summit	52.42	105.00	157.59
17' 8"	Short	54.80	106.00	157.20
17' 8"	Long	55.80	106.00	156.20
17' 8"	Oak Summit	52.92	106.00	159.09
17' 10"	Short	55.80	107.00	158.20
17' 10"	Long	56.25	107.00	157.75
17' 10"	Oak Summit	53.42	107.00	160.59
18' 0"	Short	57.25	108.00	158.75
18' 0"	Long	57.80	108.00	158.20
18' 0"	Oak Summit	53.92	108.00	162.09



TRACK CONFIGURATION FOR 6'6" UP TO 14' TALL DOORS (SEE TABLE 2) N.T.S.



AVAILABLE TRACK CONFIGURATIONS N.T.S.

REV	DESCRIPTION OF REVISIONS	DATE	BY

MAX SIZE
18' WIDTH
14' HEIGHT
(DOOR HEIGHT SUBJECT TO WEIGHT LIMITATIONS)

DESIGN LOADS
+25.4 PSF
-28.7 PSF

TEST LOADS
+38.1 PSF
-43.1 PSF

LARGE MISSILE IMPACT RESISTANCE

Thomas L. Shelmerdine, PE (TX PE #85829)
Structural Solutions, PA (TX Firm #F-004063)

STATE OF TEXAS
THOMAS L. SHELME RDINE
85829
LICENSED PROFESSIONAL ENGINEER

TX

ENTRE/MATIC

165 CARRIAGE COURT WINSTON-SALEM, N.C. 27105

MODEL #1500 STRATFORD 3000
MODEL #1200 HERITAGE 3000
MODEL #1550 OAK SUMMIT 3000
SHORT, LONG, FLUSH & OAK SUMMIT PANELS

SIZE	DRAWN BY	RLR	DATE	10/16/14	DRAWING NUMBER
B	CHECKED BY		DATE		IRC-1518-130-24-I

SHEET 3 OF 3

5921-G W. Friendly Ave., Greensboro, NC 27410