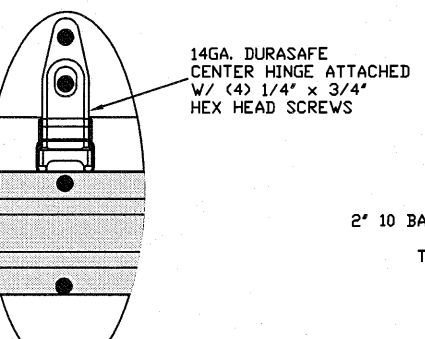
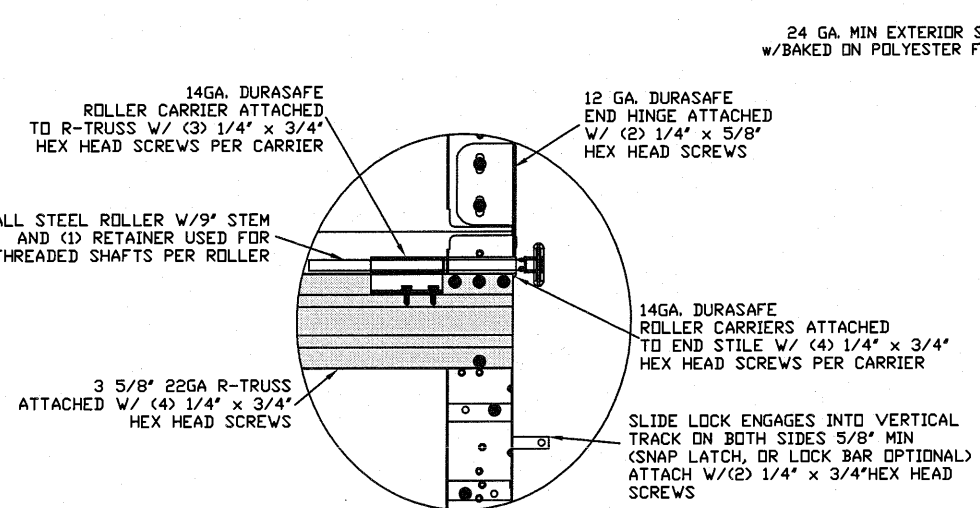


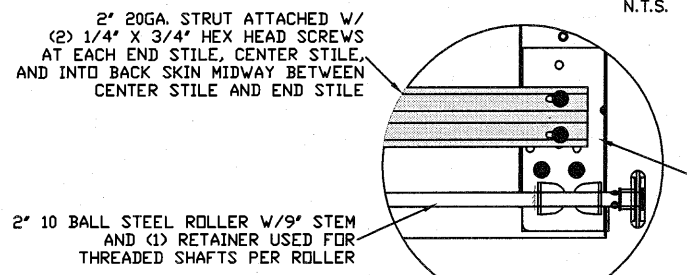
TYPICAL TOP FIXTURES
N.T.S.



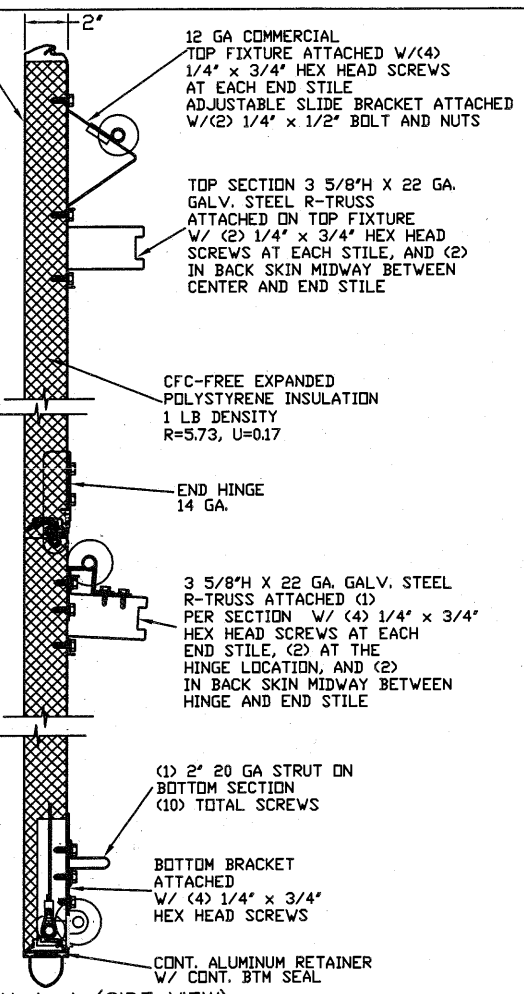
TYPICAL DURASAFE CENTER HINGE
N.T.S.



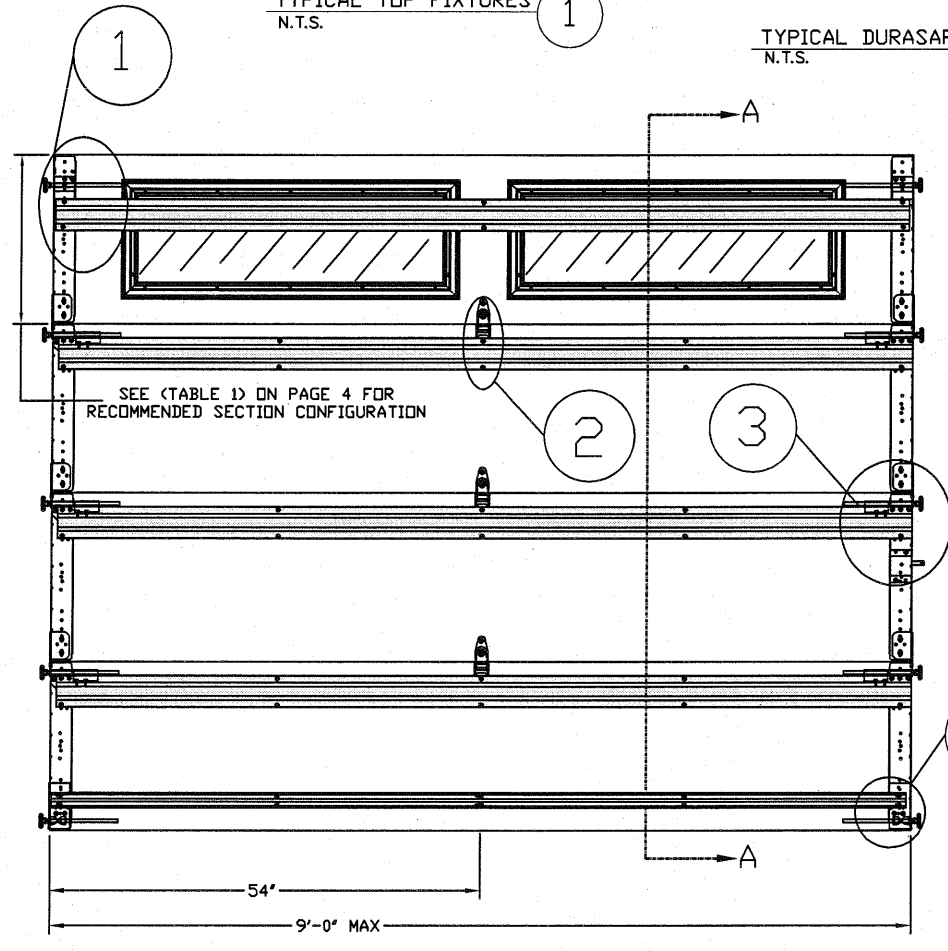
TYPICAL DURASAFE END HINGE
N.T.S.



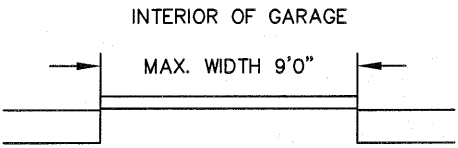
TYPICAL BOTTOM BRACKET
N.T.S.



SECTION A-A (SIDE VIEW)
N.T.S.



INSIDE ELEVATION
N.T.S.



DESIGN LOADS
+256.5 LBS/FT
-303.8 LBS/FT
SEE NOTE 2

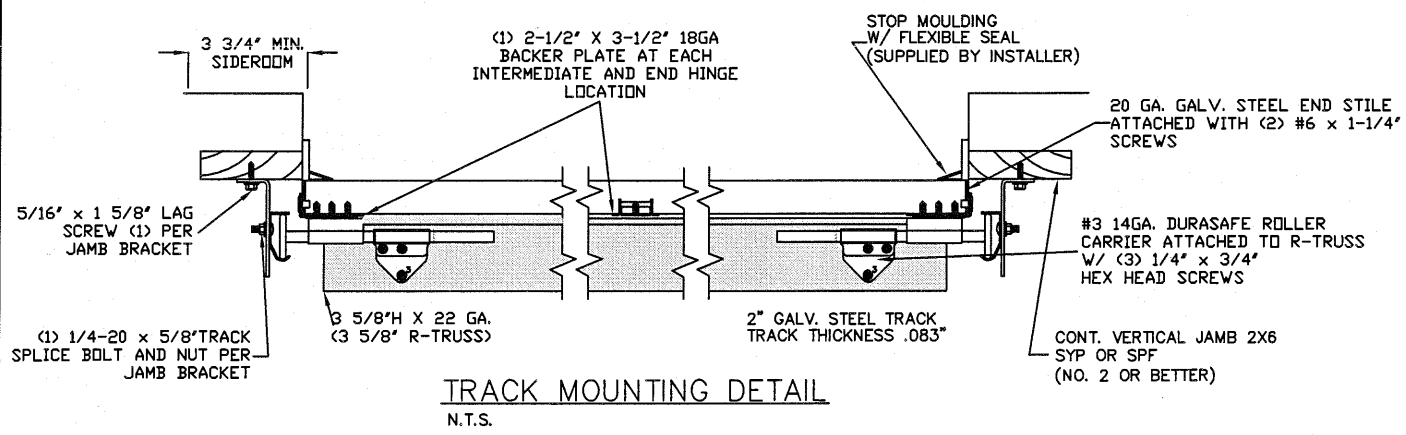
LARGE MISSILE IMPACT RESISTANT

THE METHOD OF TESTING WAS IN SUBSTANTIAL CONFORMANCE WITH THE PROCEDURE DESCRIBED IN DASMA 108 & 115, ASTM E330, E1886, E1996, & F588, AND TAS 201, 201, 203. THE PRESSURES SHOWN ON THE DRAWINGS WERE CALCULATED USING ASCE 7-98/02/05 WITH THE FOLLOWING PARAMETERS (5 FEET OF DOOR WIDTH IN THE END ZONE, ROOF AT ANY SLOPE I=1.0):

WIND SPEED (MPH)	190	172	164	156	150
EXPOSURE LEVEL	B	C	C	D	D
MEAN ROOF HEIGHT	30'	15'	25'	15'	25'

SPECIFICATIONS AND NOTES

- ALL THE LOAD FROM THE DOOR IS TRANSFERRED TO THE VERTICAL TRACK, FROM THE TRACK THE LOAD IS TRANSFERRED TO THE VERTICAL JAMBS. THE HORIZONTAL JAMB OR HEADER RECEIVES NO PORTION OF THE LOAD TRANSFERRED FROM THE DOOR.
- EACH VERTICAL JAMBS RECEIVES MAXIMUM DESIGN LOADS OF: +256.5 LBS/FT & -303.8 LBS/FT
- DOOR AND HARDWARE WILL BE DESIGNED, MANUFACTURED AND INSTALLED WITH STANDARDS AS SET FORTH BY DASMA.
- DOOR SECTIONS SHALL BE 24 GA. (.0216) MIN. EXTERIOR SKIN ROLLED FORMED, W/ BAKED ON POLYESTER FINISH
- DOORS UP TO 7'0" HIGH CONSIST OF (4) SECTIONS AS SHOWN. USE (1) 3 5/8" R-TRUSS PER SECTION AND (1) 2" 20GA STRUT ON THE BOTTOM SECTION
- DOORS OVER (4) SECTIONS REFER TO TABLES 1 AND 2 ON PAGE 4
- SUPPORTING STRUCTURAL ELEMENTS SHALL BE DESIGNED BY A REGISTERED PROFESSIONAL ENGINEER FOR WIND LOADS INDICATED ON THIS DRAWING IN ADDITION TO OTHER LOADINGS.



TRACK MOUNTING DETAIL
N.T.S.

REV	DESCRIPTION OF REVISIONS	DATE	BY
A	REVISED NOTE 8	1/7/09	CBT
B	UPDATED WJATS AND ADDED ASCE MPH DETAIL	12/5/11	RLR
C	ADDED GLAZING OPTIONS	10/28/13	RLR

MAX SIZE 9' x 14'

DESIGN LOADS +57.0 PSF -67.5 PSF

LARGE MISSILE IMPACT RESISTANCE

Thomas L. Shelmerdine, PE (TX PE #85829) Structural Solutions, PA (TX Firm #F-004063)

TX

5921-G W. Friendly Ave., Greensboro, NC 27410

165 CARRIAGE COURT WINSTON-SALEM, N.C. 27105 WWW.AMARR.COM

MODEL #1200 HERITAGE 3000
MODEL #1200 OAK SUMMIT 3000
SHORT, LONG, FLUSH & OAK SUMMIT PANELS

SIZE	DRAWN BY	BHG	DATE	04/16/07	DRAWING NUMBER
B	CHECKED BY	SKW	DATE	05/08/07	IRC-1209-189-21-1

SHEET 1 OF 4

WOOD JAMB ATTACHMENT TO STRUCTURE

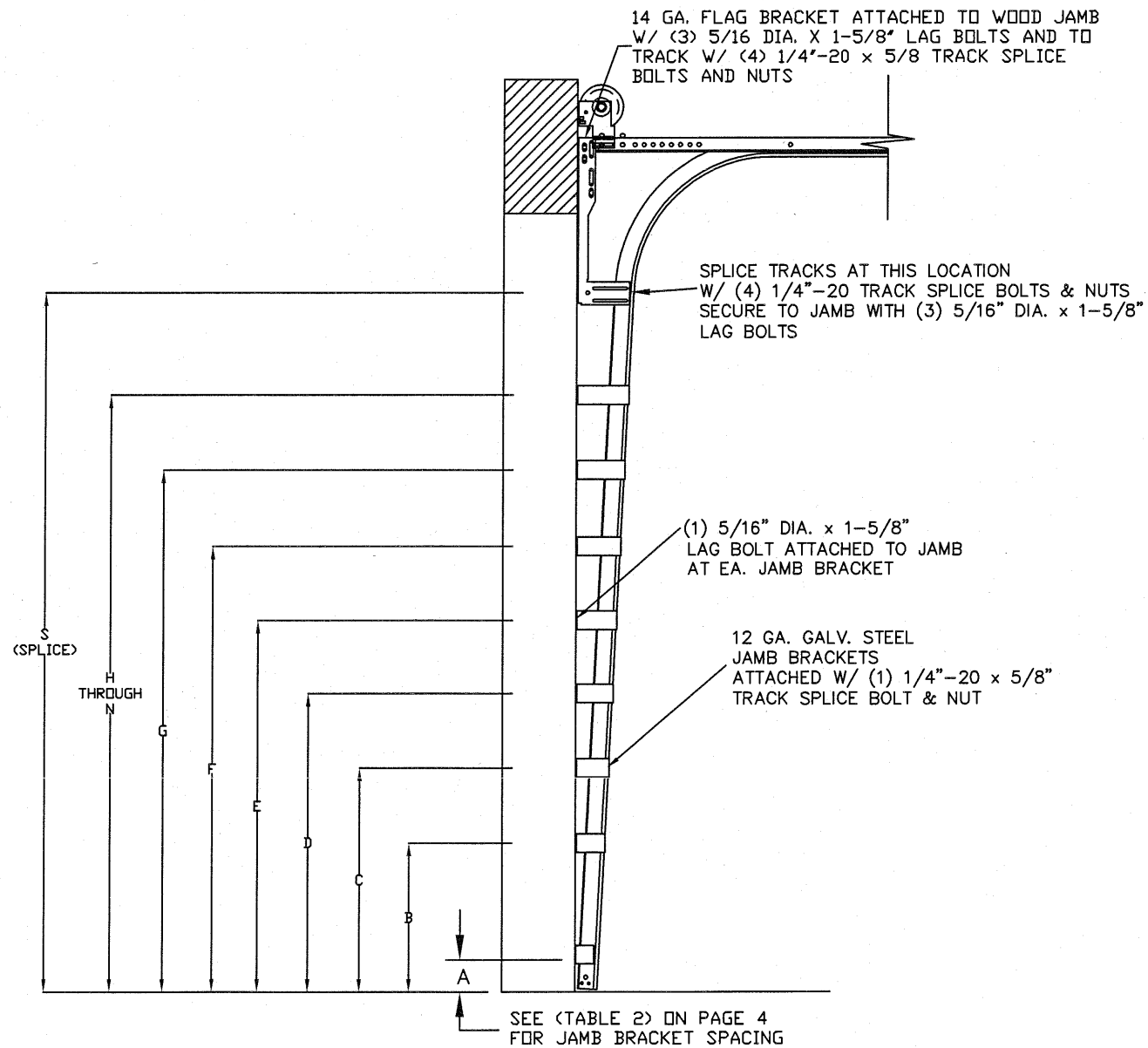
2 X 6 VERTICAL JAMB ATTACHMENT TO WOOD FRAME STRUCTURE
 5/16" X 3" LAG SCREWS STARTING 6" FROM ENDS THEN 18" O.C. (1 1/2" EMBEDMENT)

2 X 6 VERTICAL JAMB ATTACHMENT TO 2,000 PSI CONCRETE
 HILTI KWIK BOLT 3/8" X 4" STARTING 6" FROM ENDS THEN 24" O.C. (2 1/2" EMBEDMENT)
 HILTI SLEEVE ANCHOR 3/8" X 2-3/4" STARTING 6" FROM ENDS THEN 16" O.C. (1 1/4" EMBEDMENT)
 ITW/RAMSET REDHEAD (TRU-BOLT) 3/8" X 4" STARTING 6" FROM ENDS THEN 24" O.C. (2 1/2" EMBEDMENT)

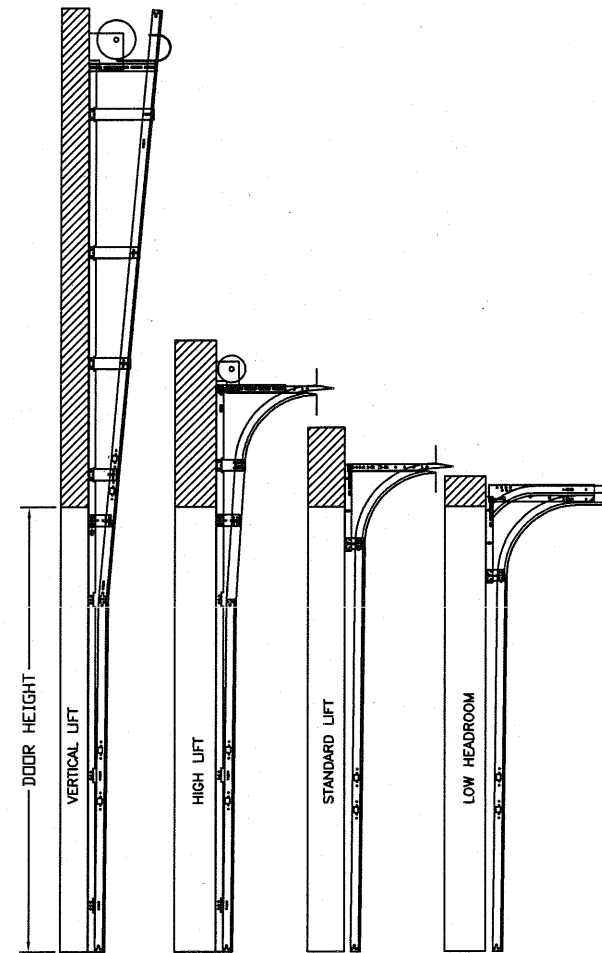
2 X 6 VERTICAL JAMB ATTACHMENT TO HOLLOW C-90 BLOCK
 SIMPSON 1/4" X 3" TITEN SCREWS STARTING 6" FROM ENDS, USE PAIRS OF FASTENERS (3' APART) AT 8" O.C. (1 1/2" EMBEDMENT)
 HILTI 1/4" X 2-3/4" KWIK-CON II+ SCREWS STARTING 6" FROM ENDS, USE PAIRS OF FASTENERS (3' APART) AT 8" O.C. (1 1/4" EMBEDMENT)

2 X 6 VERTICAL JAMB ATTACHMENT TO GROUTED C-90 BLOCK (2000 PSI GROUT)
 HILTI SLEEVE ANCHOR 3/8" X 2-3/4" STARTING 6" FROM ENDS THEN 20" O.C. (1 1/4" EMBEDMENT) (OR, USE FASTENERS FOR HOLLOW C-90 BLOCK)

*LAGS AND BOLTS CAN BE COUNTERSUNK TO PROVIDE A FLUSH MOUNTING SURFACE.
 *PREPARATION OF WOOD JAMBS BY OTHERS



TRACK CONFIGURATION FOR 6'6" UP TO 14' TALL DOORS



AVAILABLE TRACK CONFIGURATIONS
 N.T.S.

REV	DESCRIPTION OF REVISIONS	DATE	BY
A	REVISED NOTE 8	1/7/09	CBT
B	UPDATED NOTES AND ADDED ASCE MPH DETAIL	12/5/11	RLR
C	ADDED GLAZING OPTIONS	10/28/13	RLR

9' x 14'
 DESIGN LOADS
 +57.0 PSF
 -67.5 PSF

LARGE MISSILE IMPACT RESISTANCE

Thomas L. Shelmerdine, PE (TX PE #85829)
 Structural Solutions, PA (TX Firm #F-004063)

TX

5921-G W. Friendly Ave., Greensboro, NC 27410

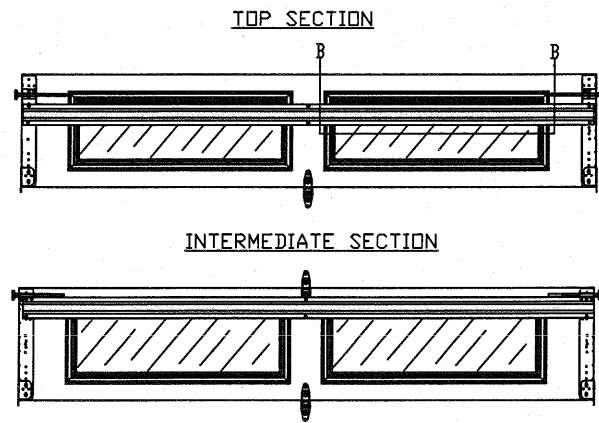
Amarr

165 CARRIAGE COURT WINSTON-SALEM, N.C. 27105 WWW.AMARR.COM

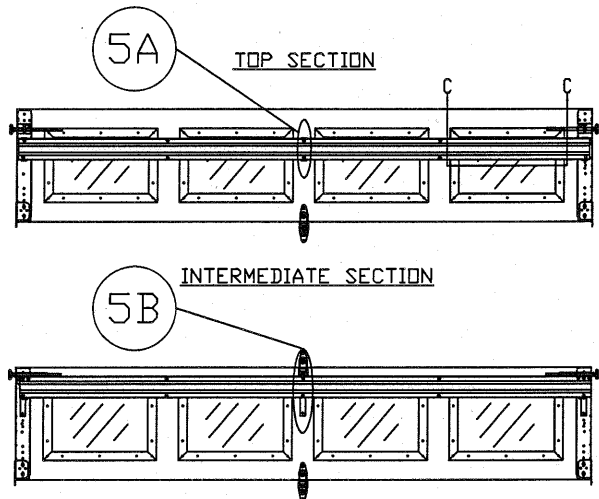
MODEL #1200 HERITAGE 3000
MODEL #1200 OAK SUMMIT 3000
 SHORT, LONG, FLUSH & OAK SUMMIT PANELS

SIZE	DRAWN BY	BHG	DATE	04/16/07	DRAWING NUMBER
B	CHECKED BY	SKW	DATE	05/08/07	IRC-1209-189-21-1

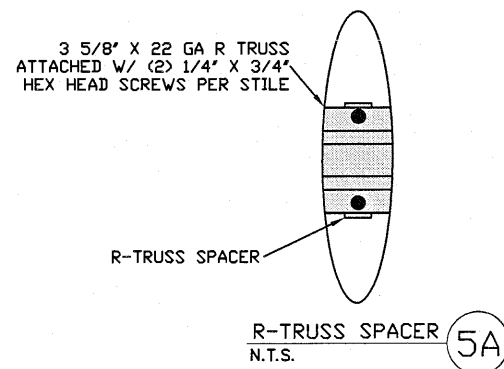
SHEET 2 OF 4



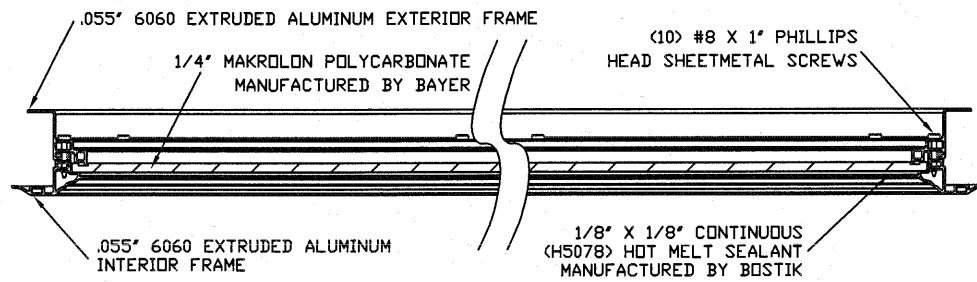
OPTIONAL LONG PANEL GLAZED SECTION R-TRUSS AND STILE LAYOUT
N.T.S.



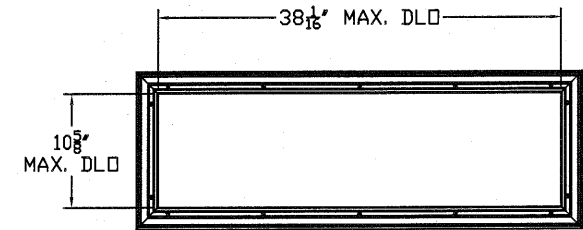
OPTIONAL SHORT PANEL GLAZED SECTION R-TRUSS AND STILE LAYOUT
N.T.S.



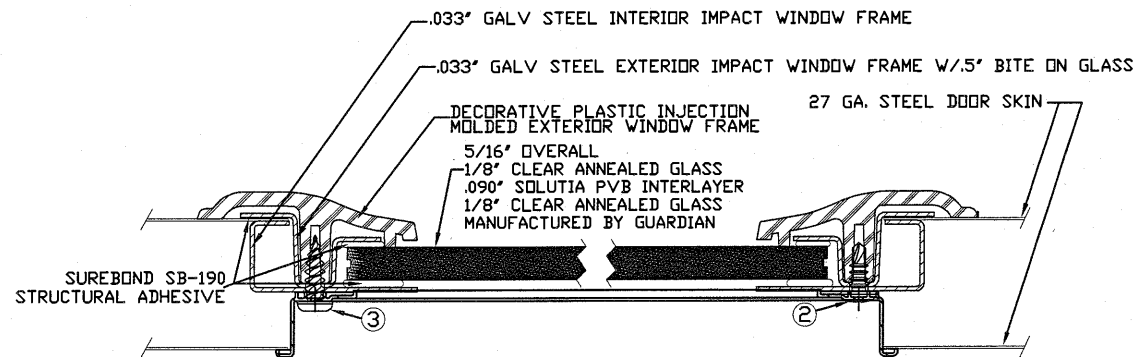
R-TRUSS SPACER
N.T.S. 5A



SECTION B-B IMPACT WINDOW DETAIL
N.T.S.

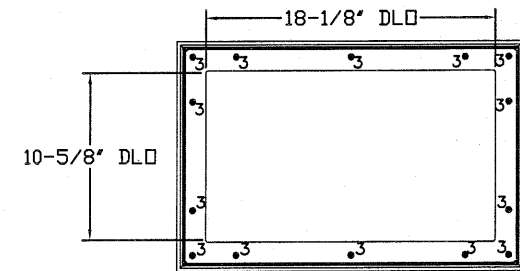


LONG PANEL IMPACT GLAZING FASTENER DETAIL
N.T.S.

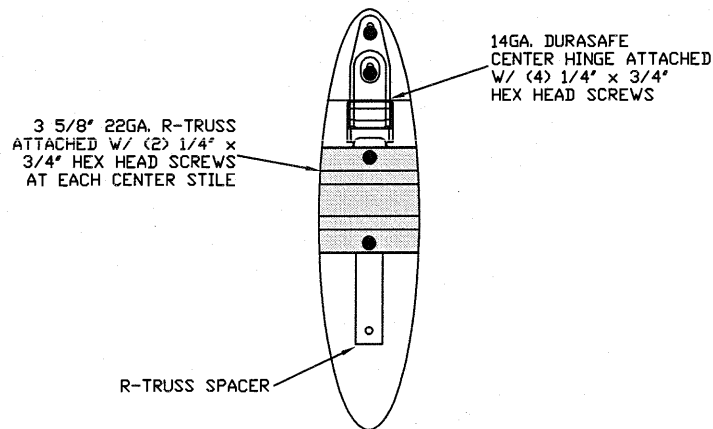


2. 3/16" X 1/2" SCREW - USED TO FASTEN THE STEEL EXTERIOR IMPACT WINDOW FRAME TO THE STEEL INTERIOR IMPACT WINDOW FRAME.
3. 11/64" X 1/2" SCREW - USED TO FASTEN DECORATIVE PLASTIC MOLDED WINDOW FRAME TO THE ASSEMBLY

SECTION C-C IMPACT WINDOW DETAIL
N.T.S.



IMPACT GLAZING FASTENER DETAIL
N.T.S.
GLAZING MEETS ASTM E1300-04



R-TRUSS SPACER
N.T.S. 5B

REV	DESCRIPTION OF REVISIONS	DATE	BY
A	REVISED NOTE 8	1/7/09	CBT
B	UPDATED WJATS AND ADDED ASCE MPH DETAIL	12/5/11	RLR
C	ADDED GLAZING OPTIONS	10/28/13	RLR

9' x 14'
DESIGN LOADS
+57.0 PSF
-67.5 PSF

LARGE MISSILE
IMPACT
RESISTANCE

Thomas L. Shelmerdine, PE (TX PE #85829)
Structural Solutions, PA (TX Firm #F-004063)

TX

5921-G W. Friendly Ave., Greensboro, NC 27410

Amarr

165 CARRIAGE COURT WINSTON-SALEM, N.C. 27105 WWW.AMARR.COM

MODEL #1200 HERITAGE 3000
MODEL #1200 OAK SUMMIT 3000
SHORT, LONG, FLUSH & OAK SUMMIT PANELS

SIZE	DRAWN BY	BHG	DATE	04/16/07	DRAWING NUMBER
B	CHECKED BY	SKW	DATE	05/08/07	IRC-1209-189-21-1

SHEET 3 OF 4

TABLE 1

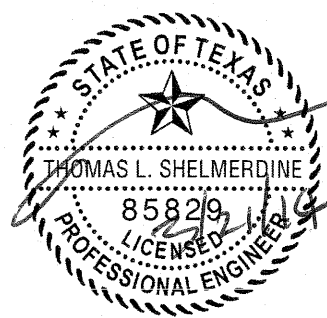
DOOR HEIGHT	SECTION HEIGHTS							
	Btm	#2	#3	#4	#5	#6	#7	#8
14' 0"	21"	21"	21"	21"	21"	21"	21"	21"
13' 6"	21"	21"	21"	21"	21"	18"	18"	21"
13' 0"	21"	21"	21"	18"	18"	18"	18"	21"
12' 6"	21"	18"	18"	18"	18"	18"	18"	21"
12' 0"	21"	21"	21"	21"	21"	18"	21"	
11' 6"	21"	21"	21"	18"	18"	18"	21"	
11' 0"	21"	18"	18"	18"	18"	18"	21"	
10' 6"	21"	21"	21"	21"	21"	21"		
10' 0"	21"	21"	21"	18"	18"	21"		
9' 6"	21"	18"	18"	18"	18"	21"		
9' 0"	18"	18"	18"	18"	18"	18"		
8' 6"	21"	21"	21"	18"	21"			
8' 0"	21"	18"	18"	18"	21"			
7' 6"	18"	18"	18"	18"	18"			
7' 0"	21"	21"	21"	21"				
6' 6"	21"	18"	18"	21"				

TABLE 2

DOOR HEIGHT	TRACK ATTACHMENT															SPLICE
	A	B	C	D	E	F	G	H	I	J	K	L	M	N	S	
6' 6"	3"	14"	27"	38"	46"	56"	64"									70"
7'	3"	14"	27"	38"	46"	56"	68"									76"
7' 6"	3"	14"	27"	38"	46"	56"	68"	78"								82"
8'	3"	14"	27"	38"	46"	56"	68"	78"								88"
8' 6"	3"	14"	27"	38"	46"	56"	68"	78"	88"							94"
9'	3"	14"	27"	38"	46"	56"	68"	78"	88"							100"
9' 6"	3"	14"	27"	38"	46"	56"	68"	78"	88"	98"						106"
10'	3"	14"	27"	38"	46"	56"	68"	78"	88"	100"						112"
10' 6"	3"	14"	27"	38"	46"	56"	68"	78"	88"	100"	110"					118"
11'	3"	14"	27"	38"	46"	56"	68"	78"	88"	100"	110"					124"
11' 6"	3"	14"	27"	38"	46"	56"	68"	78"	88"	100"	110"	120"				130"
12'	3"	14"	27"	38"	46"	56"	68"	78"	88"	100"	110"	122"				136"
12' 6"	3"	14"	27"	38"	46"	56"	68"	78"	88"	100"	109"	122"	132"			142"
13'	3"	14"	27"	38"	46"	56"	68"	78"	88"	100"	114"	122"	134"			148"
13' 6"	3"	14"	27"	38"	46"	56"	68"	78"	88"	100"	109"	122"	134"	144"		154"
14'	3"	14"	27"	38"	46"	56"	68"	78"	88"	100"	114"	122"	134"	146"		160"

ALL TRACK ATTACHMENT SPACING +/-2" ALLOWED WITH SYP OR SPF NO. 2 OR BETTER ONLY

REV	DESCRIPTION OF REVISIONS	DATE	BY
A	REVISED NOTE 8	1/7/09	CBT
B	UPDATED WJATS AND ADDED ASCE MPH DETAIL	12/5/11	RLR
C	ADDED GLAZING OPTIONS	10/28/13	RLR

9' x 14' DESIGN LOADS +57.0 PSF -67.5 PSF LARGE MISSILE IMPACT RESISTANCE	 Thomas L. Shelmerdine, PE (TX PE #85829) Structural Solutions, PA (TX Firm #F-004063) TX 5921-G W. Friendly Ave., Greensboro, NC 27410
---	---

Amarr

165 CARRIAGE COURT WINSTON-SALEM, N.C. 27105 WWW.AMARR.COM

MODEL #1200 HERITAGE 3000
MODEL #1200 OAK SUMMIT 3000
 SHORT, LONG, FLUSH & OAK SUMMIT PANELS

SIZE	DRAWN BY	BHG	DATE	04/16/07	DRAWING NUMBER
B	CHECKED BY	SKW	DATE	05/08/07	IRC-1209-189-21-1

SHEET 4 OF 4