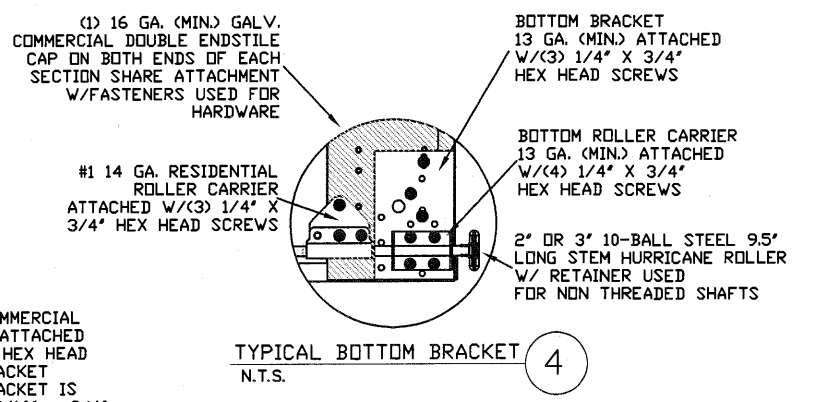
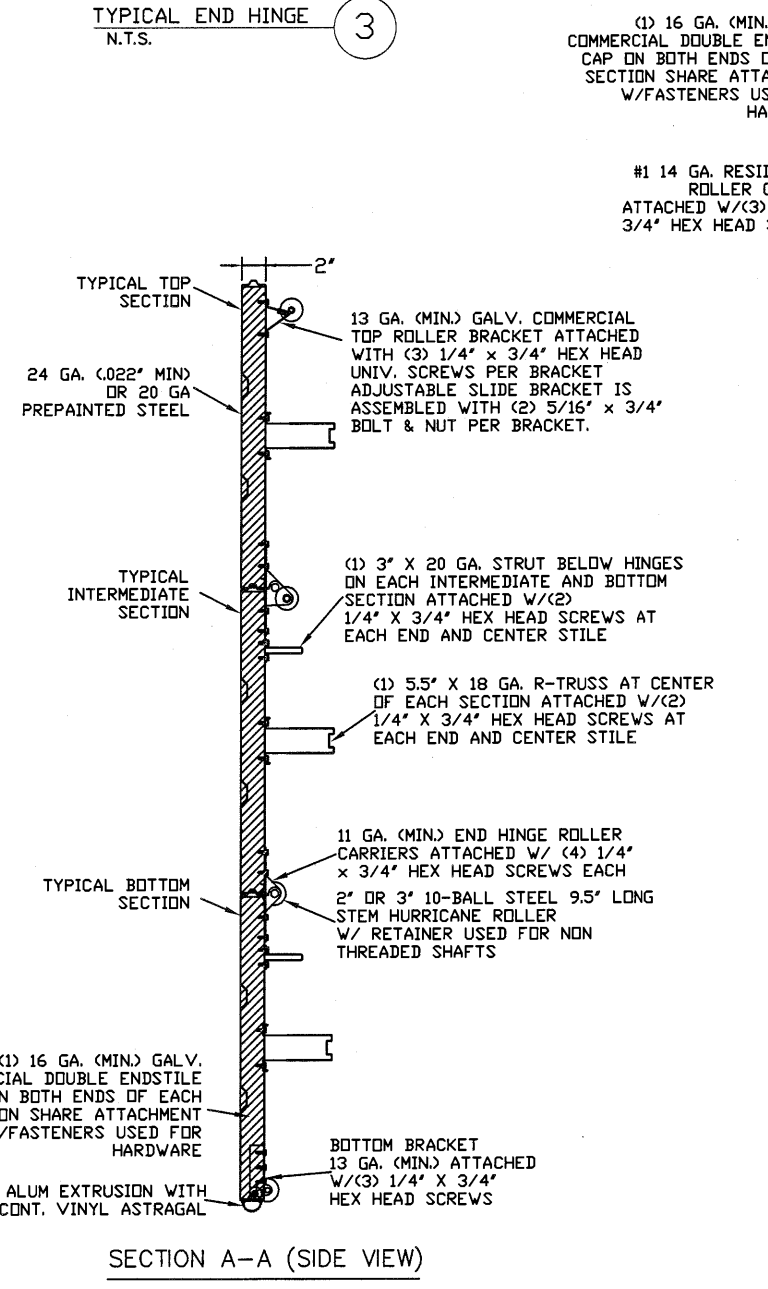
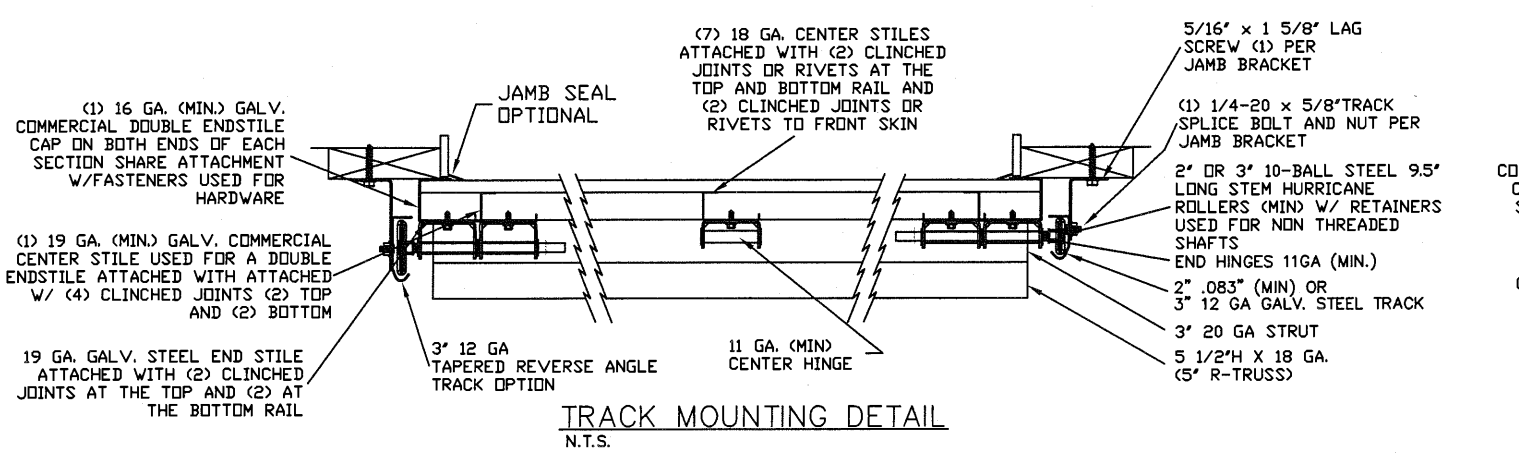
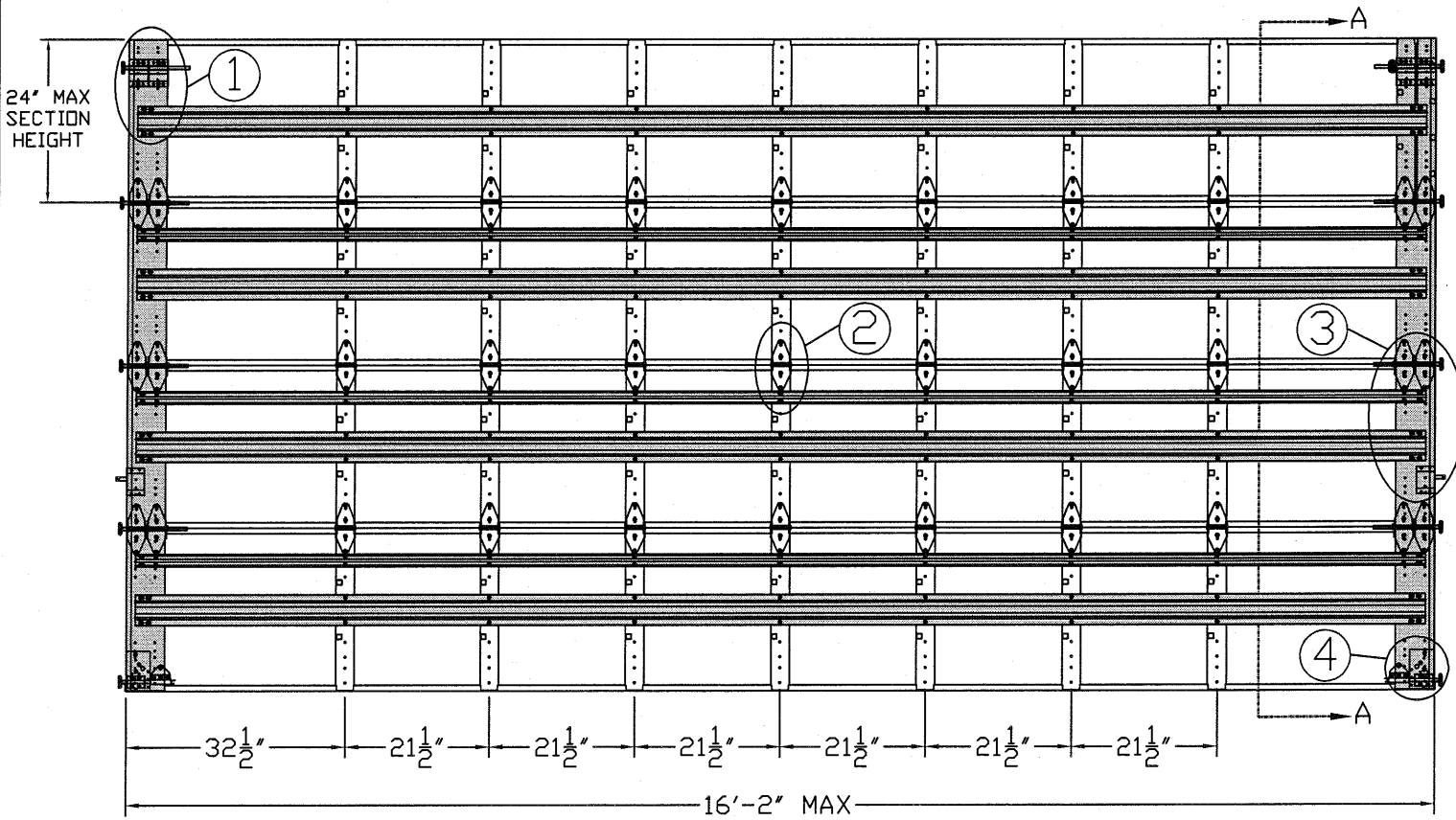


THE METHOD OF TESTING WAS IN SUBSTANTIAL CONFORMANCE WITH THE PROCEDURE DESCRIBED IN ASTM E330, E1886, E1996, F588 AND DASMA 108, 115. THE PRESSURES SHOWN ON THE DRAWINGS WERE CALCULATED USING ASCE 7-98/02/05 WITH THE FOLLOWING PARAMETERS (5 FEET OF DOOR WIDTH IN THE END ZONE, ROOF SLOPE <= 10 DEGREES, AND I=1.0):

WIND SPEED (MPH)	181	164	156	149	143
EXPOSURE LEVEL	B	C	C	D	D
MEAN ROOF HEIGHT	30'	15'	25'	15'	25'

LARGE MISSILE IMPACT RESISTANT



REV	DESCRIPTION OF REVISIONS	DATE	BY

MAX SIZES
WIDTH 16'-2"
HEIGHT 24'

DESIGN LOADS
+45.0 PSF
-52.0 PSF

LARGE MISSILE
IMPACT
RESISTANCE

Thomas L. Shelmerdine, PE (TX PE #85829)
Structural Solutions, PA (TX Firm #004063)

TX

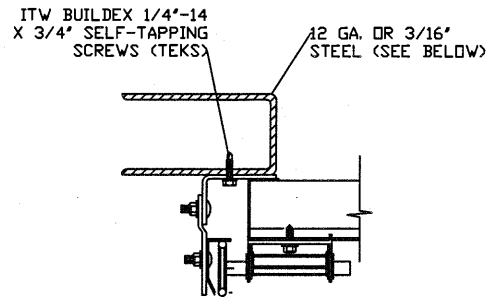
5921-G W. Friendly Ave., Greensboro, NC 27410

165 CARRIAGE COURT WINSTON-SALEM, N.C. 27105 WWW.AMARR.COM

MODEL 2400 (24 GA)
MODEL 2000 (20 GA)

SIZE	DRAWN BY	RLR	DATE	5/30/13	DRAWING NUMBER
B	CHECKED BY	RLR	DATE	5/30/13	IBC-2416-180-26-1

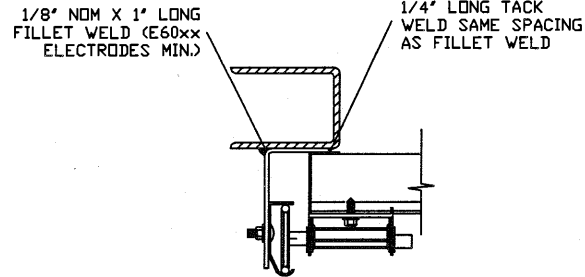
SHEET 1 OF 3



REVERSE ANGLE MOUNT SHOWN
BRACKET, CONTINUOUS AND TAPERED
ANGLE MOUNT AVAILABLE

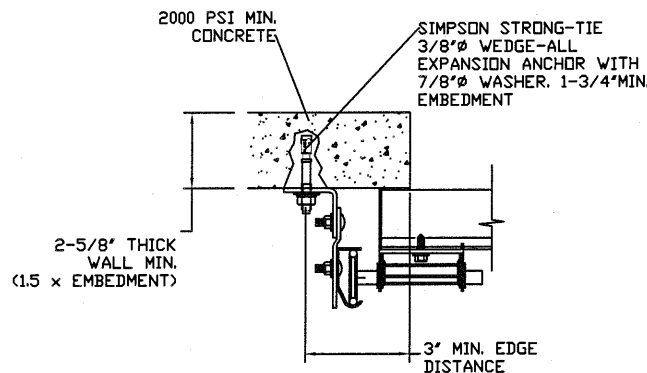
12 GA STEEL FRAMING
232 LBS/SCREW ALLOWABLE LOAD - 3' FROM ENDS AND 6' O.C.
REFER TO NOTES: 1, 2 AND 5

3/16\"/>



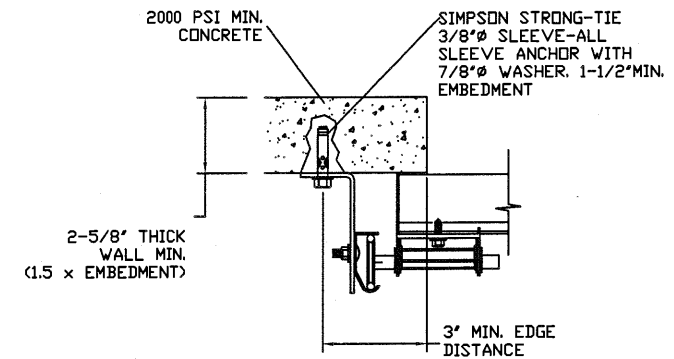
TAPERED REVERSE ANGLE MOUNT SHOWN
BRACKET, CONTINUOUS AND REVERSE
ANGLE MOUNT AVAILABLE

STEEL FRAMING 12GA OR GREATER
1590 LBS/IN ALLOWABLE LOAD - 6' FROM ENDS AND 24' O.C.
REFER TO NOTES: 1, 2, 5, 6, 7, 8 AND 9



CONTINUOUS ANGLE MOUNT SHOWN
BRACKET MOUNT AVAILABLE

2000 PSI CONCRETE OR GREATER
351 LBS/EXPANSION ANCHOR ALLOWABLE LOAD - 6' FROM ENDS AND 10' O.C.
REFER TO NOTES: 1, 2, 3, 4 AND 5



BRACKET MOUNT SHOWN
CONTINUOUS MOUNT AVAILABLE

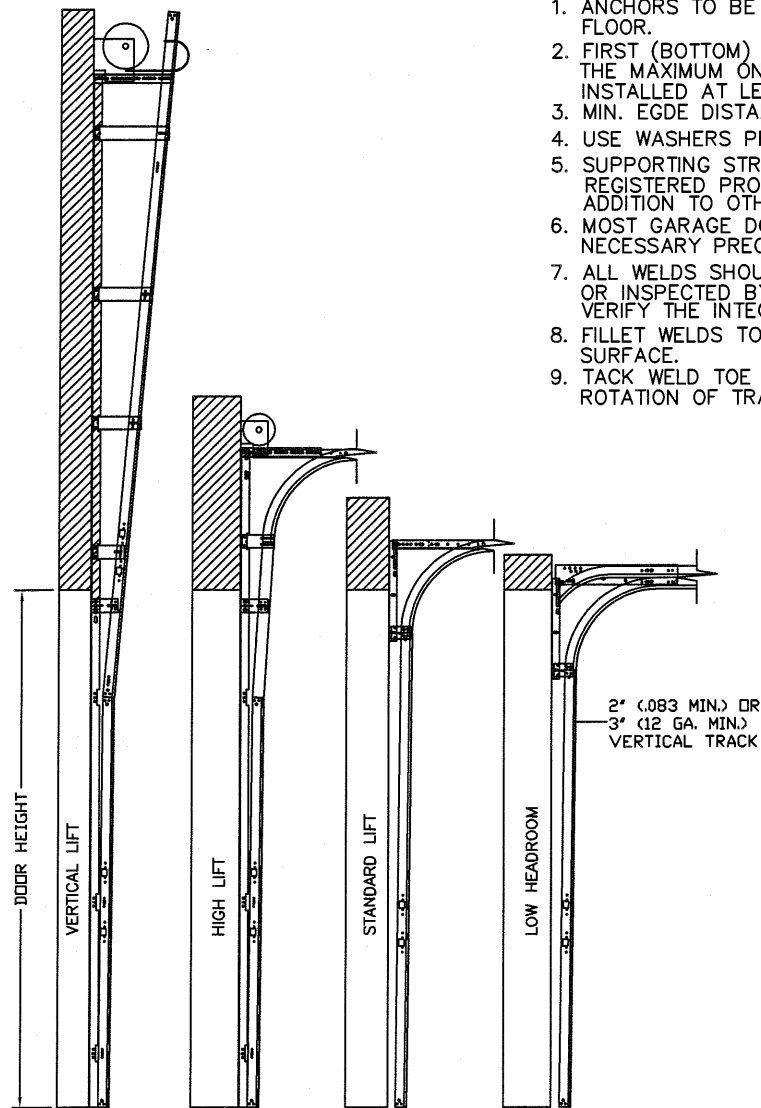
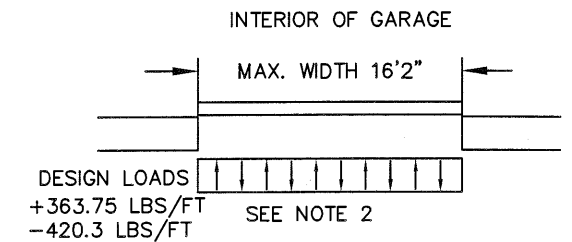
2000 PSI CONCRETE OR GREATER
336 LBS/SLEEVE ANCHOR ALLOWABLE LOAD - 6' FROM ENDS AND 10' O.C.
REFER TO NOTES: 1, 2, 3, 4 AND 5

ALTERNATIVE ATTACHMENT NOTES

- ANCHORS TO BE EVENLY SPACED BETWEEN THE HEADER AND FLOOR.
- FIRST (BOTTOM) ANCHOR STARTING AT NO MORE THAN HALF OF THE MAXIMUM ON-CENTER DISTANCE. HIGHEST ANCHOR INSTALLED AT LEAST AS HIGH AS THE DOOR OPENING.
- MIN. EDGE DISTANCE OF 3\"/>

SPECIFICATIONS AND NOTES

- ALL THE LOAD FROM THE DOOR IS TRANSFERRED TO THE VERTICAL TRACK, FROM THE TRACK THE LOAD IS TRANSFERRED TO THE VERTICAL JAMBS. THE HORIZONTAL JAMB OR HEADER RECEIVES NO PORTION OF THE LOAD TRANSFERRED FROM THE DOOR.
- EACH VERTICAL JAMBS RECEIVES MAXIMUM DESIGN LOADS OF: +363.75 LBS/FT AND -420.3 LBS/FT
- DOOR AND HARDWARE WILL BE DESIGNED, MANUFACTURED AND INSTALLED WITH STANDARDS AS SET FORTH BY DASMA.
- DOOR SECTIONS SHALL BE 24 GA. (.022) MIN. EXTERIOR SKIN ROLLED FORMED, GALVANIZED W/ BAKED ON POLYESTER FINISH
- DOORS UP TO 24' HIGH USE (1) 5 1/2\"/>



AVAILABLE TRACK CONFIGURATIONS
N.T.S.

WOOD JAMB ATTACHMENT TO STRUCTURE (OPTIONAL)

2 X 6 VERTICAL JAMB ATTACHMENT TO WOOD FRAME STRUCTURE

5/16\"/>

2 X 6 VERTICAL JAMB ATTACHMENT TO 2,000 PSI CONCRETE

HILTI KWIK BOLT 3/8\"/>

HILTI SLEEVE ANCHOR 3/8\"/>

ITW/RAMSET REDHEAD (TRU-BOLT) 3/8\"/>

THEN 22\"/>

2 X 6 VERTICAL JAMB ATTACHMENT TO HOLLOW C-90 BLOCK

SIMPSON 1/4\"/>

USE PAIRS OF FASTENERS (3\"/>

AT 8\"/>

HILTI 1/4\"/>

USE PAIRS OF FASTENERS (3\"/>

2 X 6 VERTICAL JAMB ATTACHMENT TO GROUTED C-90 BLOCK (2000 PSI GROUT)

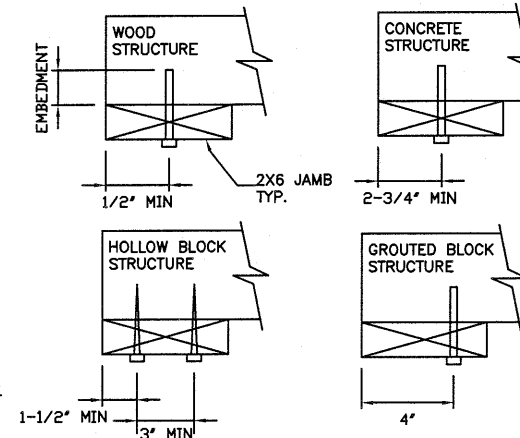
HILTI SLEEVE ANCHOR 3/8\"/>

THEN 14\"/>

(OR, USE FASTENERS FOR HOLLOW C-90 BLOCK)

*LAGS AND BOLTS CAN BE COUNTERSUNK TO PROVIDE A FLUSH MOUNTING SURFACE.

*PREPARATION OF WOOD JAMBS BY OTHERS



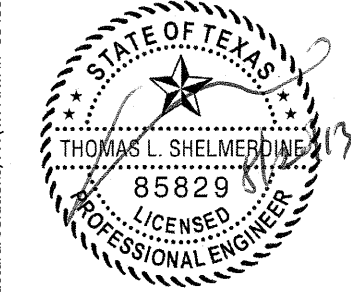
REV	DESCRIPTION OF REVISIONS	DATE	BY

MAX SIZES
WIDTH 16'-2"
HEIGHT 24'

DESIGN LOADS
+45.0 PSF
-52.0 PSF

LARGE MISSILE
IMPACT
RESISTANCE

Thomas L. Shelmerdine, PE (TX PE #85829)
Structural Solutions, PA (TX Firm #F-004063)



TX

Amarr

165 CARRIAGE COURT WINSTON-SALEM, N.C. 27105 WWW.AMARR.COM

MODEL 2400 (24 GA)
MODEL 2000 (20 GA)

SIZE	DRAWN BY	RLR	DATE	5/30/13	DRAWING NUMBER
B	CHECKED BY	RLR	DATE	5/30/13	IEC-2416-180-26-1

SHEET 2 OF 3

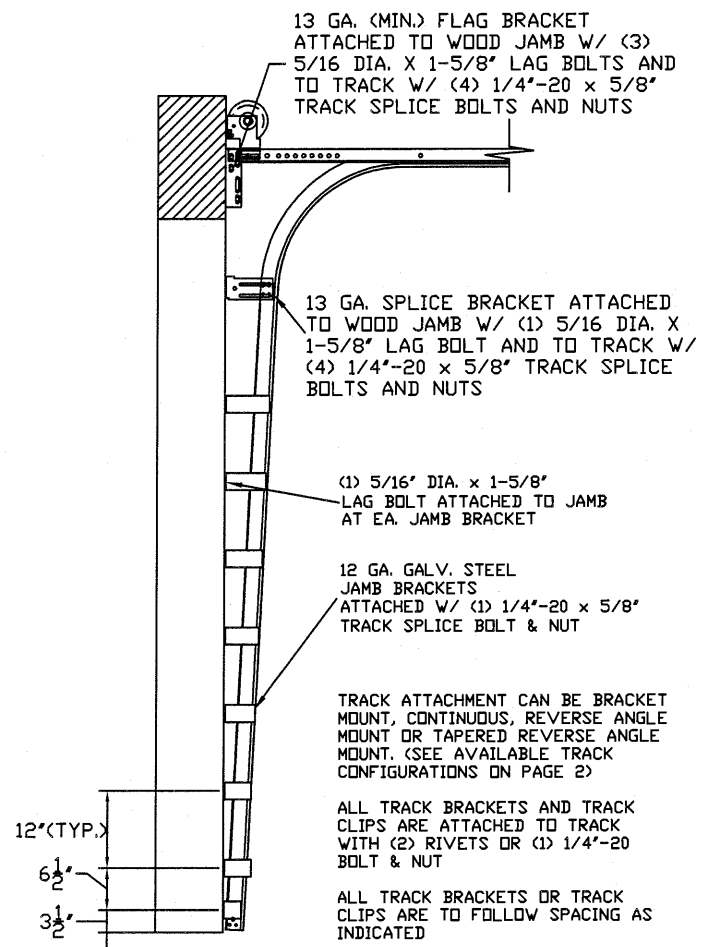


TABLE 1

DOOR HEIGHT	TRACK ATTACHMENT																					TYPICAL SPLICE			
	A	B	C	D	E	F	G	H	I	J	K	L	M	N	O	P	Q	R	S	T	U		V	W	
7' 0"	3.5"	10"	22"	34"	46"	58"	70"																	76"	
7' 6"	3.5"	10"	22"	34"	46"	58"	70"																		82"
8' 0"	3.5"	10"	22"	34"	46"	58"	70"	82"																	88"
8' 6"	3.5"	10"	22"	34"	46"	58"	70"	82"	94"																94"
9' 0"	3.5"	10"	22"	34"	46"	58"	70"	82"	94"	106"															100"
9' 6"	3.5"	10"	22"	34"	46"	58"	70"	82"	94"	106"	118"														106"
10' 0"	3.5"	10"	22"	34"	46"	58"	70"	82"	94"	106"	118"	130"													112"
11' 0"	3.5"	10"	22"	34"	46"	58"	70"	82"	94"	106"	118"	130"	142"												124"
12' 0"	3.5"	10"	22"	34"	46"	58"	70"	82"	94"	106"	118"	130"	142"	154"											136"
13' 0"	3.5"	10"	22"	34"	46"	58"	70"	82"	94"	106"	118"	130"	142"	154"	166"										148"
14' 0"	3.5"	10"	22"	34"	46"	58"	70"	82"	94"	106"	118"	130"	142"	154"	166"	178"									160"
15' 0"	3.5"	10"	22"	34"	46"	58"	70"	82"	94"	106"	118"	130"	142"	154"	166"	178"	190"								172"
16' 0"	3.5"	10"	22"	34"	46"	58"	70"	82"	94"	106"	118"	130"	142"	154"	166"	178"	190"	202"							184"
17' 0"	3.5"	10"	22"	34"	46"	58"	70"	82"	94"	106"	118"	130"	142"	154"	166"	178"	190"	202"	214"						196"
18' 0"	3.5"	10"	22"	34"	46"	58"	70"	82"	94"	106"	118"	130"	142"	154"	166"	178"	190"	202"	214"	226"					208"
19' 0"	3.5"	10"	22"	34"	46"	58"	70"	82"	94"	106"	118"	130"	142"	154"	166"	178"	190"	202"	214"	226"	238"				220"
20' 0"	3.5"	10"	22"	34"	46"	58"	70"	82"	94"	106"	118"	130"	142"	154"	166"	178"	190"	202"	214"	226"	238"	250"			232"
21' 0"	3.5"	10"	22"	34"	46"	58"	70"	82"	94"	106"	118"	130"	142"	154"	166"	178"	190"	202"	214"	226"	238"	250"	262"		244"
22' 0"	3.5"	10"	22"	34"	46"	58"	70"	82"	94"	106"	118"	130"	142"	154"	166"	178"	190"	202"	214"	226"	238"	250"	262"	274"	256"
23' 0"	3.5"	10"	22"	34"	46"	58"	70"	82"	94"	106"	118"	130"	142"	154"	166"	178"	190"	202"	214"	226"	238"	250"	262"	274"	268"
24' 0"	3.5"	10"	22"	34"	46"	58"	70"	82"	94"	106"	118"	130"	142"	154"	166"	178"	190"	202"	214"	226"	238"	250"	262"	274"	280"

TRACK CONFIGURATION FOR UP TO 24' TALL DOORS
SEE TABLE 1 ON PAGE 3

REV	DESCRIPTION OF REVISIONS	DATE	BY

MAX. SIZES
WIDTH 16'-2"
HEIGHT 24'

DESIGN LOADS
+45.0 PSF
-52.0 PSF

LARGE MISSILE
IMPACT
RESISTANCE

TX

Thomas L. Shelmerdine, PE (TX PE #85829)
Structural Solutions, PA (TX Firm #004063)

5921-G W. Friendly Ave., Greensboro, NC 27410

165 CARRIAGE COURT WINSTON-SALEM, N.C. 27105 WWW.AMARR.COM

MODEL 2400 (24 GA)
MODEL 2000 (20 GA)

SIZE	DRAWN BY	RLR	DATE	5/30/13	DRAWING NUMBER
B	CHECKED BY	RLR	DATE	5/30/13	IBC-2416-180-26-1

SHEET 3 OF 3