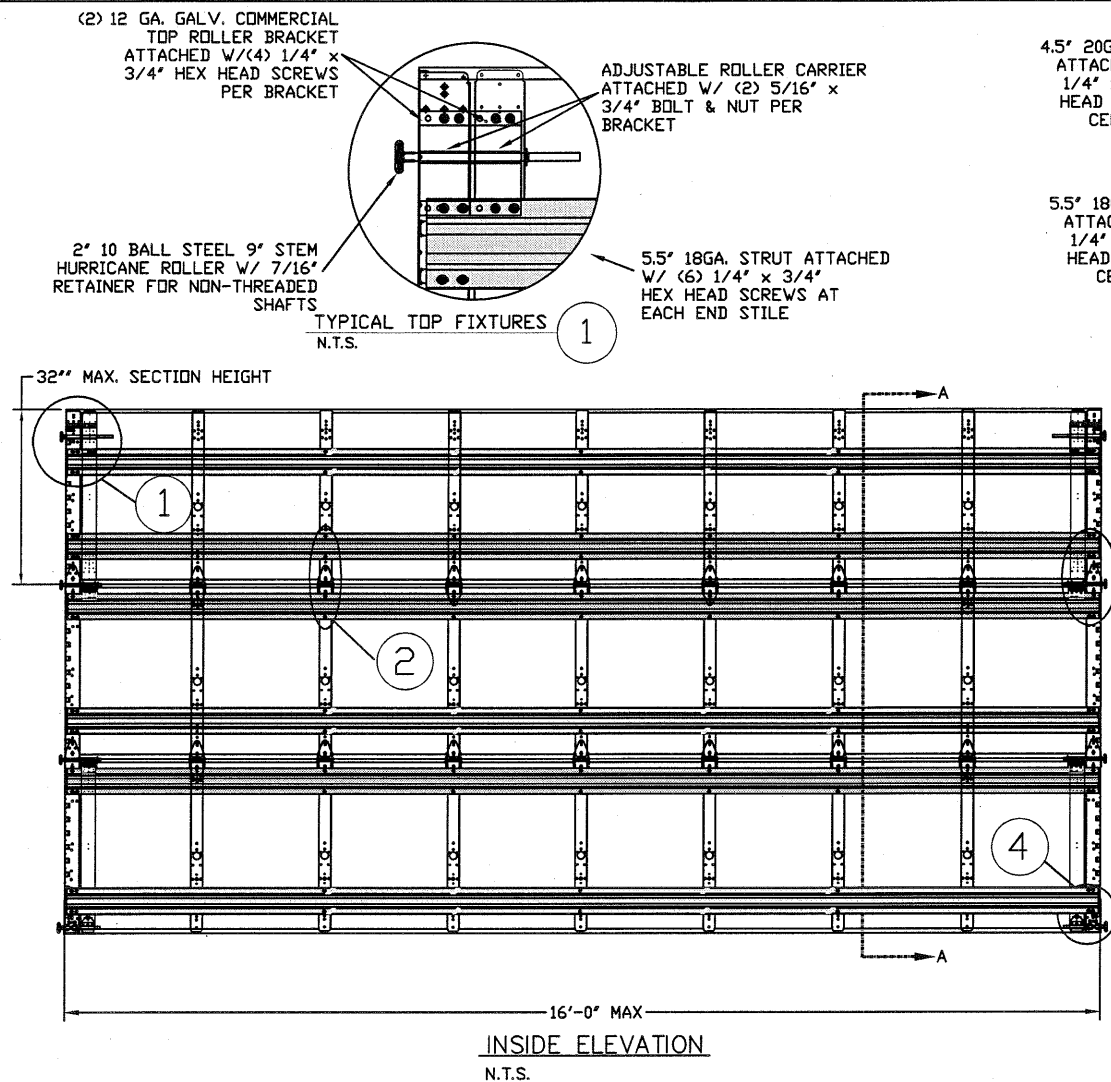


# LARGE MISSILE IMPACT RESISTANCE



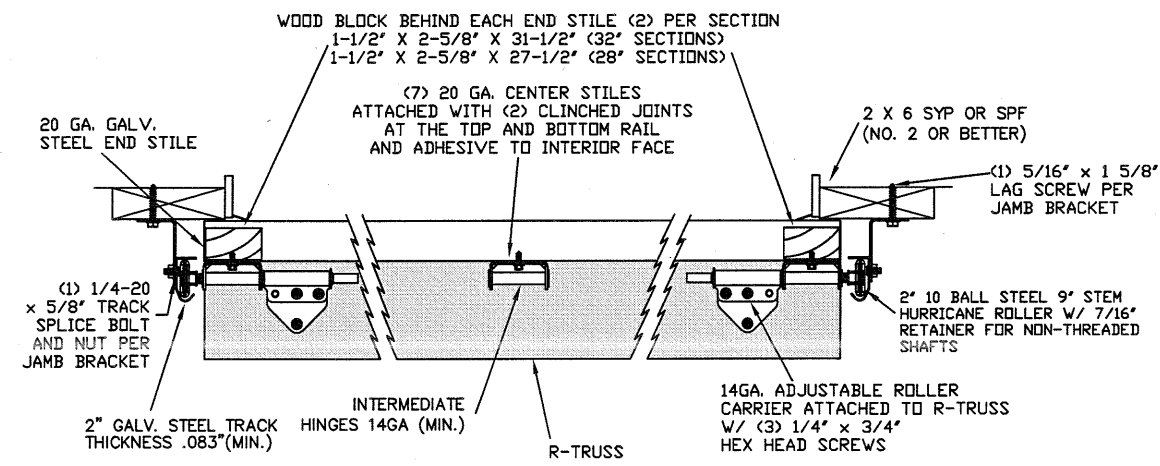
INSIDE ELEVATION  
N.T.S.

TYPICAL CENTER HINGE  
N.T.S.

TYPICAL END HINGE  
N.T.S.

TYPICAL BOTTOM BRACKET  
N.T.S.

SECTION A-A (SIDE VIEW)  
N.T.S.



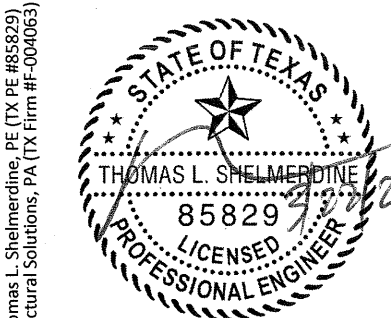
TRACK MOUNTING DETAIL  
N.T.S.

THE METHOD OF TESTING WAS IN SUBSTANTIAL CONFORMANCE WITH THE PROCEDURE DESCRIBED IN DASMA 108 & 115, ASTM E330, E1886, E1996, & F588. THE PRESSURES SHOWN ON THE DRAWINGS WERE CALCULATED USING ASCE 7-16 WITH THE FOLLOWING PARAMETERS (5 FEET OF DOOR WIDTH IN THE END ZONE, ROOF AT ANY SLOPE):

WIND SPEED (MPH)	194	176	168	160	154
EXPOSURE LEVEL	B	C	C	D	D
MEAN ROOF HEIGHT	30'	15'	25'	15'	25'

REV	DESCRIPTION OF REVISIONS	DATE	BY

MAX SIZE  
16' x 14'  
DESIGN LOADS  
+34.0 PSF  
-38.6 PSF  
TEST LOADS  
(1.5 x DESIGN LOADS)  
+51.0 PSF  
-57.9 PSF



TX

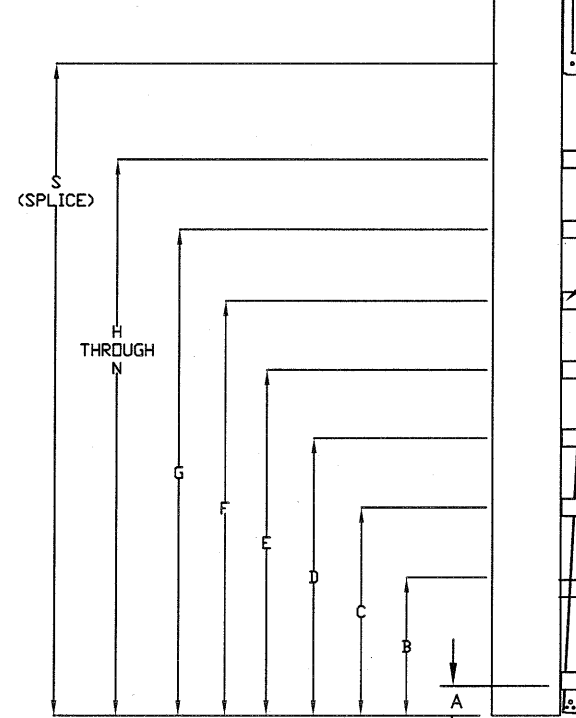


MODEL #500 AMARR CLASSICA 1000, 2000

SIZE	DRAWN BY	DLJ	DATE	11/13/2020	DRAWING NUMBER
B	CHECKED BY	DRC	DATE	11/30/2020	IRC-5316-150-26-1

5921-G W. Friendly Ave., Greensboro, NC 27410

13 GA. FLAG BRACKET ATTACHED TO WOOD JAMB/ (3) 5/16 DIA. X 1-5/8" LAG BOLTS AND TO TRACK W/ (4) 1/4"-20 X 5/8" TRACK SPLICE BOLTS AND NUTS



SPLICE TRACKS AT THIS LOCATION W/ (4) 1/4"-20 TRACK SPLICE BOLTS & NUTS SECURE TO JAMB WITH (3) 5/16 DIA. X 1-5/8 LAG BOLTS

(1) 5/16" DIA. X 1-5/8" LAG BOLT ATTACHED TO JAMB AT EA. JAMB BRACKET

12 GA. GALV. STEEL JAMB BRACKETS ATTACHED W/ (1) 1/4"-20 X 5/8" TRACK SPLICE BOLT & NUT

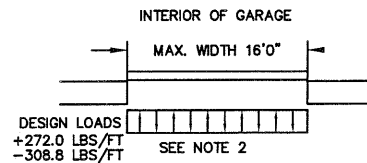
SEE (TABLE 3) FOR JAMB BRACKET SPACING

STANDARD TRACK CONFIGURATION FOR 7' AND 8' TALL DOORS

N.T.S.

**SPECIFICATIONS AND NOTES**

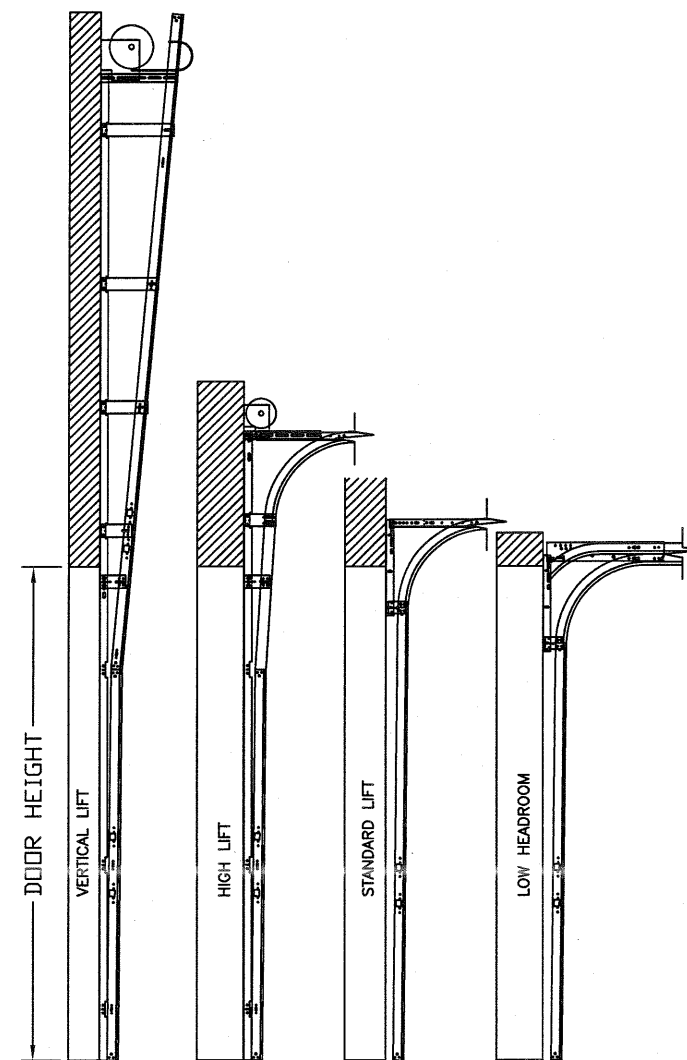
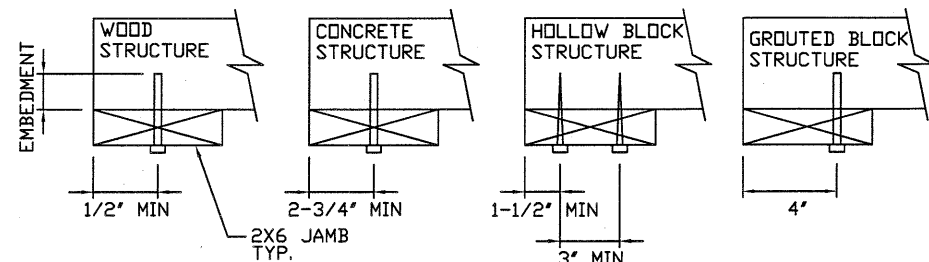
1. ALL THE LOAD FROM THE DOOR IS TRANSFERRED TO THE VERTICAL TRACK, FROM THE TRACK THE LOAD IS TRANSFERRED TO THE VERTICAL JAMBS. THE HORIZONTAL JAMB OR HEADER RECEIVES NO PORTION OF THE LOAD TRANSFERRED FROM THE DOOR.
2. EACH VERTICAL JAMBS RECEIVES MAXIMUM DESIGN LOADS OF: +272.0 LBS/FT & -308.8 LBS/FT
3. DOORS AND HARDWARE WILL BE DESIGNED, MANUFACTURED AND INSTALLED WITH STANDARDS AS SET FORTH BY DASMA.
4. DOOR SECTIONS SHALL BE 24 GA. MIN. (.022") ROLLED FORMED LIGHT COMMERCIAL QUALITY
5. SUPPORTING STRUCTURAL ELEMENTS SHALL BE DESIGNED BY A REGISTERED PROFESSIONAL ENGINEER FOR WIND LOADS INDICATED ON THIS DRAWING IN ADDITION TO OTHER LOADINGS.
6. DOOR IS MANUFACTURED AND TESTED IN ACCORDANCE WITH THE 2018 IRC/IBC



**WOOD JAMB ATTACHMENT TO STRUCTURE**

- 2 X 6 VERTICAL JAMB ATTACHMENT TO WOOD FRAME STRUCTURE  
5/16" X 3" LAG SCREWS STARTING 6" FROM ENDS THEN 18" O.C. (1 1/2" EMBEDMENT)
- 2 X 6 VERTICAL JAMB ATTACHMENT TO 2,000 PSI CONCRETE  
HILTI KWIK BOLT 3/8" X 4" STARTING 6" FROM ENDS THEN 24" O.C. (2 1/2" EMBEDMENT)  
HILTI SLEEVE ANCHOR 3/8" X 2-3/4" STARTING 6" FROM ENDS THEN 16" O.C. (1 1/4" EMBEDMENT)  
ITW/RAMSET REDHEAD (TRU-BOLT) 3/8" X 4" STARTING 6" FROM ENDS THEN 24" O.C. (2 1/2" EMBEDMENT)
- 2 X 6 VERTICAL JAMB ATTACHMENT TO HOLLOW C-90 BLOCK  
SIMPSON 1/4" X 3" TITEN SCREWS STARTING 6" FROM ENDS, USE PAIRS OF FASTENERS (3" APART) AT 8" O.C. (1 1/2" EMBEDMENT)  
HILTI 1/4" X 2-3/4" KWIK-CON II+ SCREWS STARTING 6" FROM ENDS, USE PAIRS OF FASTENERS (3" APART) AT 8" O.C. (1 1/4" EMBEDMENT)
- 2 X 6 VERTICAL JAMB ATTACHMENT TO GROUTED C-90 BLOCK (2000 PSI GROUT)  
HILTI SLEEVE ANCHOR 3/8" X 2-3/4" STARTING 6" FROM ENDS THEN 18" O.C. (1 1/4" EMBEDMENT) (OR, USE FASTENERS FOR HOLLOW C-90 BLOCK)

\*LAGS AND BOLTS CAN BE COUNTERSUNK TO PROVIDE A FLUSH MOUNTING SURFACE.  
\*PREPARATION OF WOOD JAMBS BY OTHERS



AVAILABLE TRACK CONFIGURATIONS  
N.T.S.

REV	DESCRIPTION OF REVISIONS	DATE	BY
	MAX. SIZE 16' x 14'		
	DESIGN LOADS +34.0 PSF -38.6 PSF		
	TEST LOADS (1.5 x DESIGN LOADS) +51.0 PSF -57.9 PSF		
	LARGE MISSILE IMPACT RESISTANCE		

Thomas L. Shelmerdine, PE (TX PE #85829)  
Structural Solutions, PA (TX Firm #F-004063)

TX

5921-G W. Friendly Ave., Greensboro, NC 27410

**Amarr**

MODEL #500 AMARR CLASSICA 1000, 2000

SIZE	DRAWN BY	DLJ	DATE	11/13/2020	DRAWING NUMBER
B	CHECKED BY	DRC	DATE	11/30/2020	IRC-5316-150-26-1
AMARR COMPANY 165 CARRIAGE COURT WINSTON-SALEM, N.C. 27105					SHEET 2 OF 3

TABLE 1

Section	Center Stile Locations (Measured from Left Edge)						
	Width (ft)	1st (in)	2st (in)	3rd (in)	4th (in)	5th (in)	6th (in)
15' 6	24.63	47.42	70.21	93.00	115.79	138.58	161.37
15' 8	25.03	48.02	71.01	94.00	116.99	139.98	162.97
15' 10	25.43	48.62	71.81	95.00	118.19	141.38	164.57
16' 0	24.63	48.42	72.21	96.00	119.79	143.58	167.37

TABLE 2

SECTION	STRUT SIZE
TOP	5.5"
	4.5"
5TH	5.5"
	4.5"
4TH	5.5"
	4.5"
3RD	5.5"
	4.5"
2ND	5.5"
	4.5"
BOTTOM	5.5"
	4.5"

TABLE 3

DOOR HEIGHT	TRACK ATTACHMENT														TYPICAL SPLICE	
	A	B	C	D	E	F	G	H	I	J	K	L	M	N		
7' 0"	3.5"	10.0"	22.0"	34"	46"	58"	70"									76"
7' 6"	3.5"	10.0"	22.0"	34"	46"	58"	70"									82"
8' 0"	3.5"	10.0"	22.0"	34"	46"	58"	70"	82"								88"
8' 6"	3.5"	10.0"	22.0"	34"	46"	58"	70"	82"								94"
9' 0"	3.5"	10.0"	22.0"	34"	46"	58"	70"	82"	94"							100"
9' 6"	3.5"	10.0"	22.0"	34"	46"	58"	70"	82"	94"							106"
10' 0"	3.5"	10.0"	22.0"	34"	46"	58"	70"	82"	94"	106"						112"
11' 0"	3.5"	10.0"	22.0"	34"	46"	58"	70"	82"	94"	106"	118"					124"
12' 0"	3.5"	10.0"	22.0"	34"	46"	58"	70"	82"	94"	106"	118"	130"				136"
13' 0"	3.5"	10.0"	22.0"	34"	46"	58"	70"	82"	94"	106"	118"	130"	142"			148"
14' 0"	3.5"	10.0"	22.0"	34"	46"	58"	70"	82"	94"	106"	118"	130"	142"	154"		160"

ALL TRACK AND ATTACHMENT SPACING +/-2"  
ALLOWED WITH SYP OR SPF NO. 2 OR BETTER ONLY

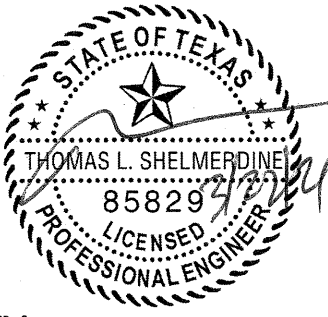
REV	DESCRIPTION OF REVISIONS	DATE	BY

MAX SIZE  
16' x 14'

DESIGN LOADS  
+34.0 PSF  
-38.6 PSF

TEST LOADS  
(1.5 x DESIGN LOADS)  
+51.0 PSF  
-57.9 PSF


LARGE MISSILE  
IMPACT  
RESISTANCE



Thomas L. Shelmerdine, PE (TX PE #85829)  
Structural Solutions, PA (TX Firm #F-004063)

TX

5921-G W. Friendly Ave., Greensboro, NC 27410



MODEL #500 AMARR CLASSICA 1000, 2000

SIZE	DRAWN BY	DLJ	DATE	11/13/2020	DRAWING NUMBER
B	CHECKED BY	DRC	DATE	11/30/2020	IRC-5316-150-26-1

AMARR COMPANY  
165 CARRIAGE COURT WINSTON-SALEM, N.C. 27105

SHEET 3 OF 3