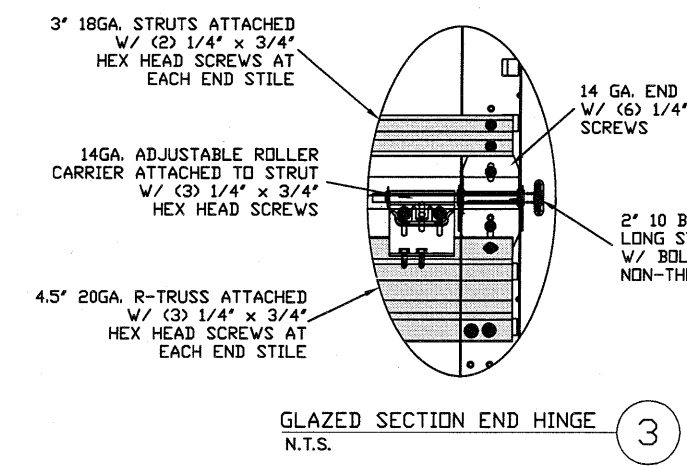


TYPICAL TOP FIXTURES
N.T.S.

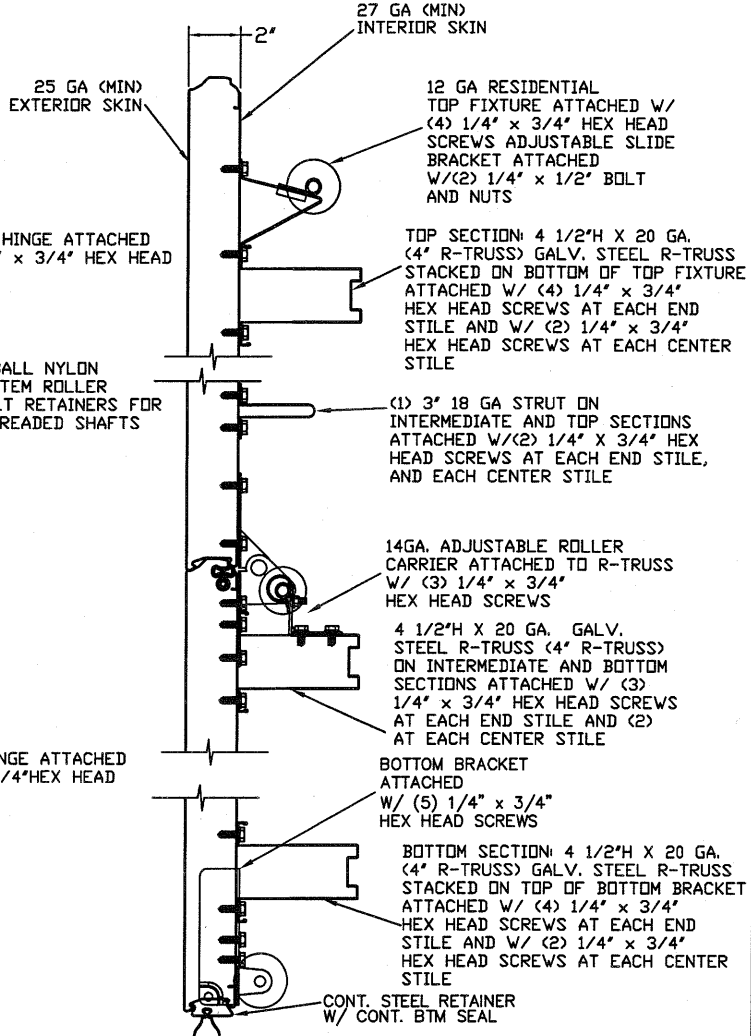
TYPICAL CENTER HINGE
N.T.S.

INSIDE ELEVATION
N.T.S.

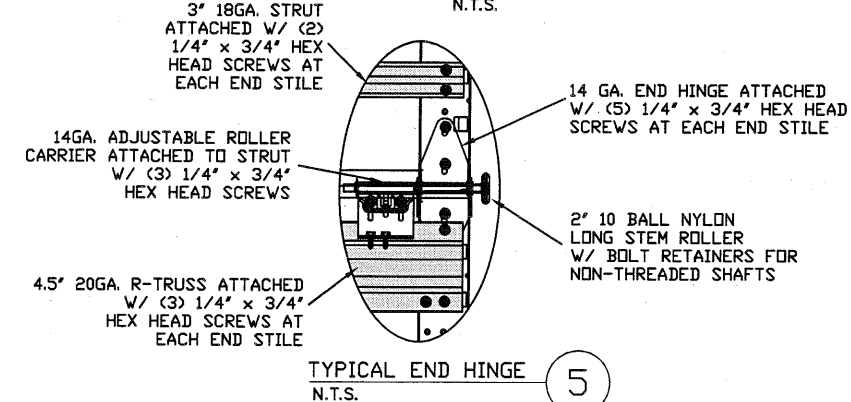


GLAZED SECTION END HINGE
N.T.S.

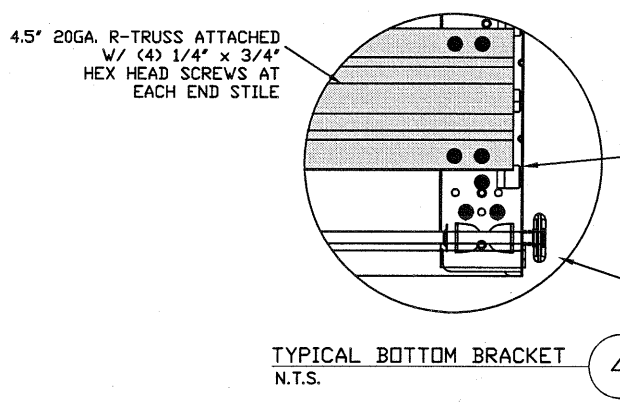
GLAZED SECTION CENTER HINGE
N.T.S.



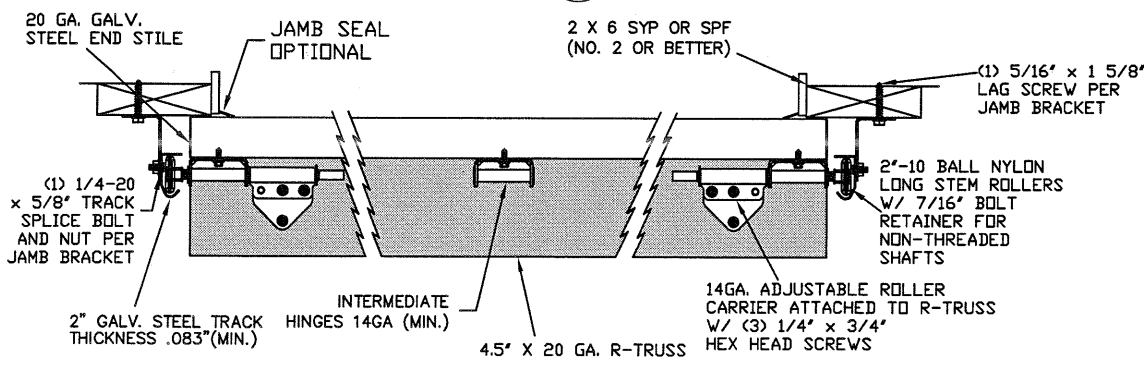
SECTION A-A (SIDE VIEW)
N.T.S.



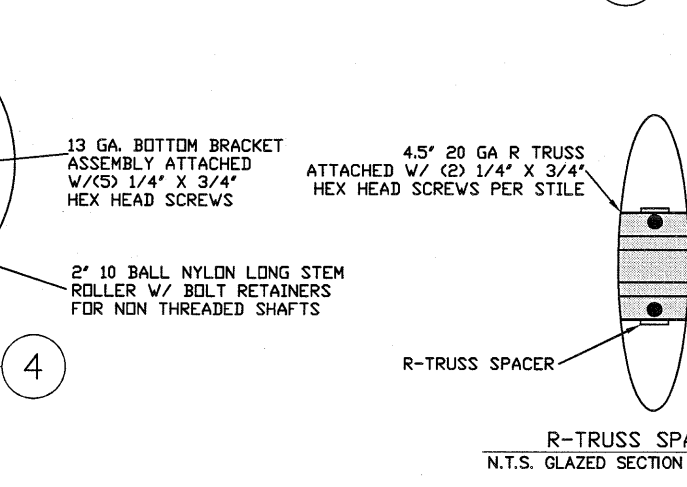
TYPICAL END HINGE
N.T.S.



TYPICAL BOTTOM BRACKET
N.T.S.



TRACK MOUNTING DETAIL
N.T.S.



R-TRUSS SPACER
N.T.S. GLAZED SECTION ONLY

THE METHOD OF TESTING WAS IN SUBSTANTIAL CONFORMANCE WITH THE PROCEDURE DESCRIBED IN DASMA 108 & 115, AND ASTM E330. THE PRESSURES SHOWN ON THE DRAWINGS WERE CALCULATED USING ASCE 7-16 WITH THE FOLLOWING PARAMETERS (5 FEET OF DOOR WIDTH IN THE END ZONE, ROOF AT ANY SLOPE):

WIND SPEED (MPH)	182	165	157	150	144
EXPOSURE LEVEL	B	C	C	D	D
MEAN ROOF HEIGHT	30'	15'	25'	15'	25'

REV	DESCRIPTION OF REVISIONS	DATE	BY
MAX SIZE	16' x 14'		
DESIGN LOADS	+29.7 PSF -33.8 PSF		
TEST LOADS (1.5 x DESIGN LOADS)	+44.6 PSF -50.7 PSF		
LARGE MISSILE IMPACT RESISTANCE			

Thomas L. Shelmerdine, PE (TX PE #85829)
Structural Solutions, PA (TX Firm #F-004063)

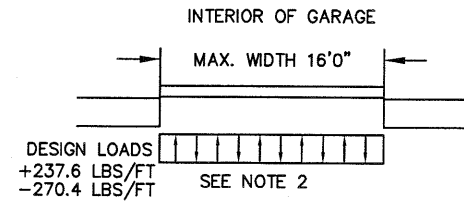
MODEL #3000 AMARR CLASSICA 3000

SIZE	DRAWN BY	DRC	DATE	11/05/2020	DRAWING NUMBER
B	CHECKED BY	DLJ	DATE	11/06/2020	IRC-3316-140-24-I

AMARR COMPANY
165 CARRIAGE COURT WINSTON-SALEM, N.C. 27105

SHEET 1 OF 3

5921-G W. Friendly Ave., Greensboro, NC 27410



SPECIFICATIONS AND NOTES

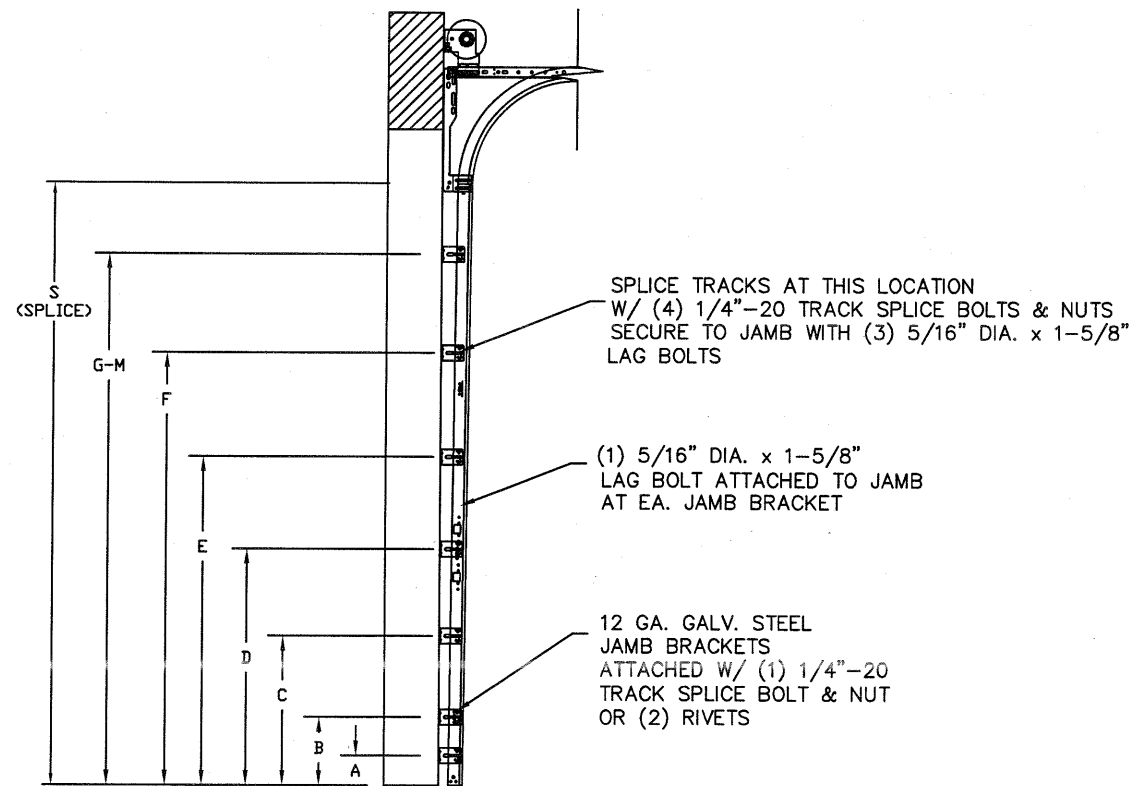
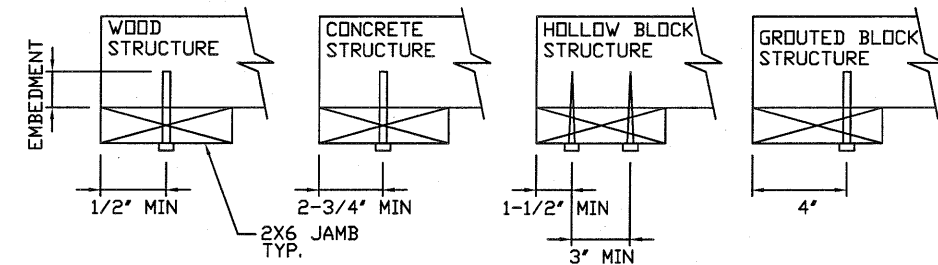
1. ALL THE LOAD FROM THE DOOR IS TRANSFERRED TO THE VERTICAL TRACK, FROM THE TRACK THE LOAD IS TRANSFERRED TO THE VERTICAL JAMBS. THE HORIZONTAL JAMB OR HEADER RECEIVES NO PORTION OF THE LOAD TRANSFERRED FROM THE DOOR.
2. EACH VERTICAL JAMBS RECEIVES MAXIMUM DESIGN LOADS OF: +237.6 LBS/FT & -270.4 LBS/FT
3. DOORS AND HARDWARE WILL BE DESIGNED, MANUFACTURED AND INSTALLED WITH STANDARDS AS SET FORTH BY DASMA.
4. DOOR SECTIONS SHALL BE 25 GA. EXTERIOR MIN. (.019"), AND 27 GA. INTERIOR MIN. (.014") ROLLED FORMED
5. SUPPORTING STRUCTURAL ELEMENTS SHALL BE DESIGNED BY A REGISTERED PROFESSIONAL ENGINEER FOR WIND LOADS INDICATED ON THIS DRAWING IN ADDITION TO OTHER LOADINGS.
6. REFER TO TABLE 1 ON PAGE 3 FOR STRUT SCHEDULE
7. DOOR IS MANUFACTURED AND TESTED IN ACCORDANCE WITH THE 2018 IRC/IBC

WOOD JAMB ATTACHMENT TO STRUCTURE

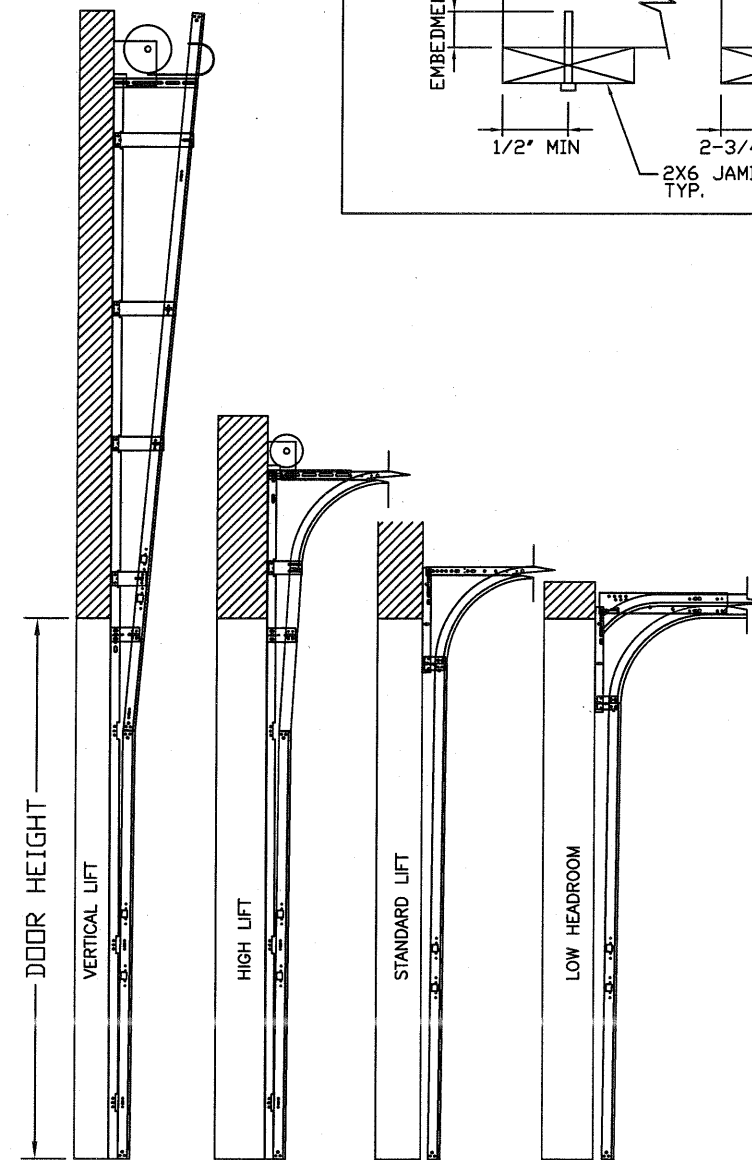
2 X 6 VERTICAL JAMB ATTACHMENT TO WOOD FRAME STRUCTURE
 5/16" X 3" LAG SCREWS STARTING 6" FROM ENDS THEN 20" O.C. (1 1/2" EMBEDMENT)
2 X 6 VERTICAL JAMB ATTACHMENT TO 2,000 PSI CONCRETE
 HILTI KWIK BOLT 3/8" X 4" STARTING 6" FROM ENDS THEN 24" O.C. (2 1/2" EMBEDMENT)
 HILTI SLEEVE ANCHOR 3/8" X 2-3/4" STARTING 6" FROM ENDS THEN 18" O.C. (1 1/4" EMBEDMENT)
 ITW/RAMSET REDHEAD (TRU-BOLT) 3/8" X 4" STARTING 6" FROM ENDS THEN 24" O.C. (2 1/2" EMBEDMENT)
2 X 6 VERTICAL JAMB ATTACHMENT TO HOLLOW C-90 BLOCK
 SIMPSON 1/4" X 3" TITEN SCREWS STARTING 6" FROM ENDS, USE PAIRS OF FASTENERS (3' APART) AT 8" O.C. (1 1/2" EMBEDMENT)
 HILTI 1/4" X 2-3/4" KWIK-CON II+ SCREWS STARTING 6" FROM ENDS, USE PAIRS OF FASTENERS (3' APART) AT 8" O.C. (1 1/4" EMBEDMENT)

2 X 6 VERTICAL JAMB ATTACHMENT TO GROUTED C-90 BLOCK (2000 PSI GROUT)
 HILTI SLEEVE ANCHOR 3/8" X 2-3/4" STARTING 6" FROM ENDS THEN 20" O.C. (1 1/4" EMBEDMENT) (OR, USE FASTENERS FOR HOLLOW C-90 BLOCK)

*LAGS AND BOLTS CAN BE COUNTERSUNK TO PROVIDE A FLUSH MOUNTING SURFACE.
 *PREPARATION OF WOOD JAMBS BY OTHERS



TRACK CONFIGURATION FOR 8' TALL DOORS
 N.T.S SEE TABLE 2 PAGE 3

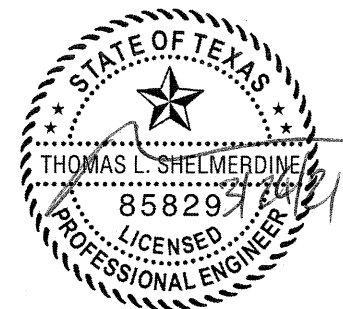


AVAILABLE TRACK CONFIGURATIONS
 N.T.S.

REV	DESCRIPTION OF REVISIONS	DATE	BY

MAX SIZE
16' x 14'
 DESIGN LOADS
+29.7 PSF
-33.8 PSF
 TEST LOADS
(1.5 x DESIGN LOADS)
+44.6 PSF
-50.7 PSF
 LARGE MISSILE
IMPACT
RESISTANCE

Thomas L. Shelmerdine, PE (TX PE #85829)
 Structural Solutions, PA (TX Firm #004063)

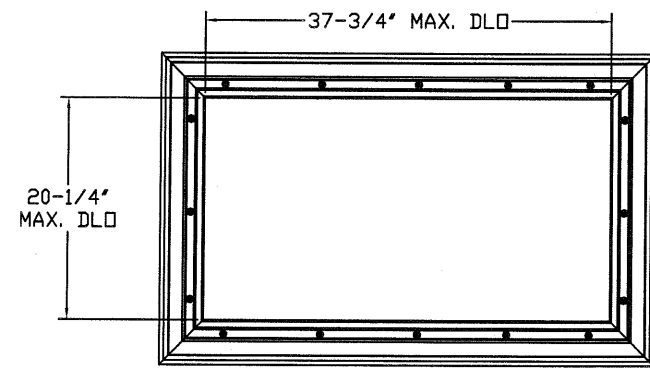


5921-G.W. Friendly Ave., Greensboro, NC 27410

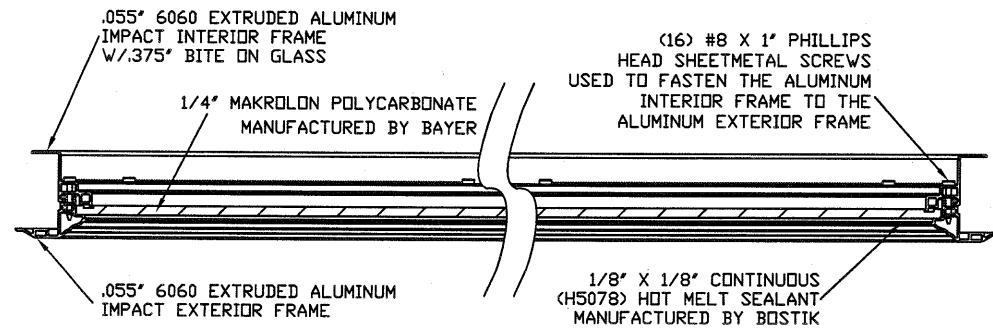
Amarr

MODEL 3000 AMARR CLASSICA 3000

SIZE	DRAWN BY	DRC	DATE	11/05/2020	DRAWING NUMBER
B	CHECKED BY	DLJ	DATE	11/06/2020	IRC-3316-140-24-1
AMARR COMPANY 165 CARRIAGE COURT WINSTON-SALEM, N.C. 27105					SHEET 2 OF 3



GLAZING FASTENER DETAIL
N.T.S.



SECTION B-B IMPACT WINDOW DETAIL
N.T.S.

TABLE 3

Section	Center Stile Locations (Measured from Left)		
	Width (ft)	1st (in)	2nd (in)
09' 2	55.00		
09' 4	56.00		
09' 6	57.00		
09' 8	58.00		
09' 10	59.00		
10' 0	60.00		
10' 2	61.00		
10' 4	62.00		
10' 6	63.00		
10' 8	64.00		
10' 10	65.00		
11' 0	66.00		
11' 2	67.00		
11' 4	68.00		
11' 6	69.00		
11' 8	70.00		
11' 10	71.00		
12' 0	48.31	95.69	
12' 2	49.06	96.94	
12' 4	49.81	98.19	
12' 6	50.56	99.44	
12' 8	51.31	100.69	
12' 10	52.06	101.94	
13' 0	52.81	103.19	
13' 2	53.56	104.44	
13' 4	54.31	105.69	
13' 6	55.06	106.94	
13' 8	55.81	108.19	
13' 10	56.56	109.44	
14' 0	57.31	110.69	
14' 2	58.06	111.94	
14' 4	58.81	113.19	
14' 6	59.56	114.44	
14' 8	60.31	115.69	
14' 10	61.06	116.94	
15' 0	61.81	118.19	
15' 2	62.56	119.44	
15' 4	63.31	120.69	
15' 6	47.42	93.00	138.58
15' 8	48.02	94.00	139.98
15' 10	48.62	95.00	141.38
16' 0	48.42	96.00	143.58

TABLE 1

SECTION	STRUT SIZE
TOP	4.5"
	3"
5TH	4.5"
	3"
4TH	4.5"
	3"
3RD	4.5"
	3"
2ND	4.5"
	3"
BOTTOM	4.5"
	4.5"

TABLE 2

DOOR HEIGHT	TRACK ATTACHMENT												
	A	B	C	D	E	F	G	H	I	J	K	L	M
7' 0	3.5"	10"	22"	34"	46"	58"							
7' 6	3.5"	10"	22"	34"	46"	58"	70"						
8' 0	3.5"	10"	22"	34"	46"	58"	70"						
8' 6	3.5"	10"	22"	34"	46"	58"	70"	82"					
9' 0	3.5"	10"	22"	34"	46"	58"	70"	82"					
9' 6	3.5"	10"	22"	34"	46"	58"	70"	82"	94"				
10' 0	3.5"	10"	22"	34"	46"	58"	70"	82"	94"				
11' 0	3.5"	10"	22"	34"	46"	58"	70"	82"	94"	106"			
12' 0	3.5"	10"	22"	34"	46"	58"	70"	82"	94"	106"	118"		
13' 0	3.5"	10"	22"	34"	46"	58"	70"	82"	94"	106"	118"	130"	
14' 0	3.5"	10"	22"	34"	46"	58"	70"	82"	94"	106"	118"	130"	142"

ALL TRACK AND ATTACHMENT SPACING +/-2"
ALLOWED WITH SYP OR SPF NO. 2 OR BETTER ONLY

REV	DESCRIPTION OF REVISIONS	DATE	BY
	MAX SIZE, 16' x 14'		
	DESIGN LOADS +29.7 PSF -33.8 PSF		
	TEST LOADS (1.5 x DESIGN LOADS) +44.6 PSF -50.7 PSF		
	LARGE MISSILE IMPACT RESISTANCE		

Thomas L. Shelmerdine, PE (TX PE #85829)
 Structural Solutions, PA (TX Firm #F-004063)

5921-G W. Friendly Ave., Greensboro, NC 27410

Amarr

MODEL 3000 AMARR CLASSICA 3000

SIZE	DRAWN BY	DRG	DATE	11/05/2020	DRAWING NUMBER
B	CHECKED BY	DLJ	DATE	11/06/2020	IRC-3316-140-24-1
AMARR COMPANY 165 CARRIAGE COURT WINSTON-SALEM, N.C. 27105					SHEET 3 OF 3