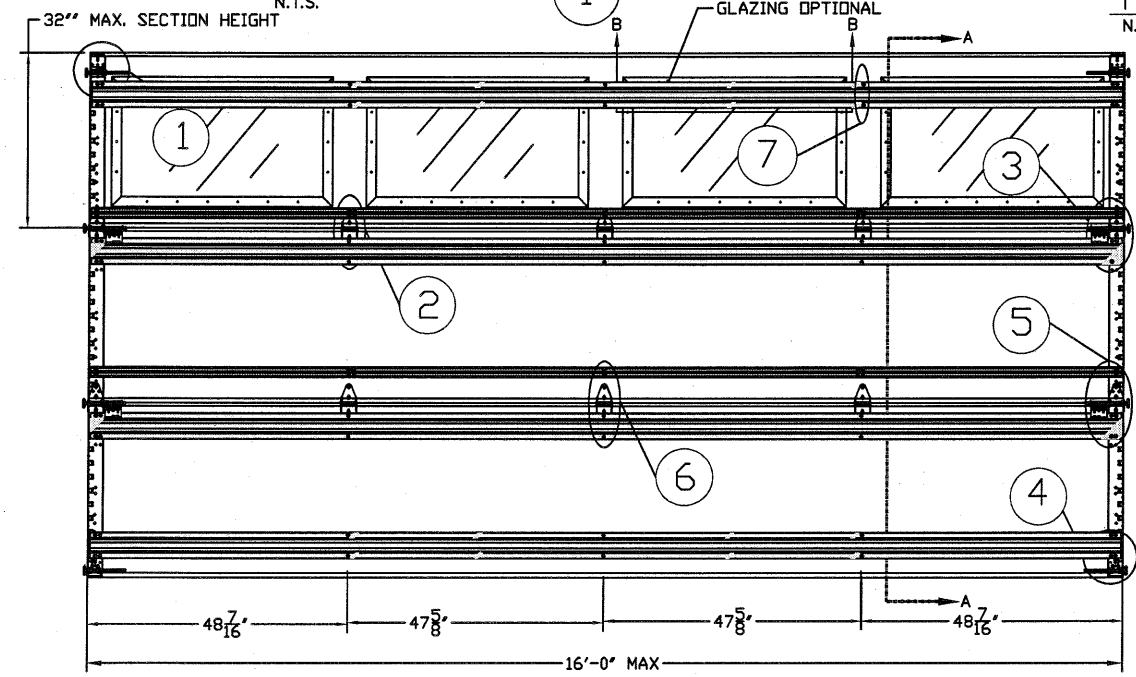
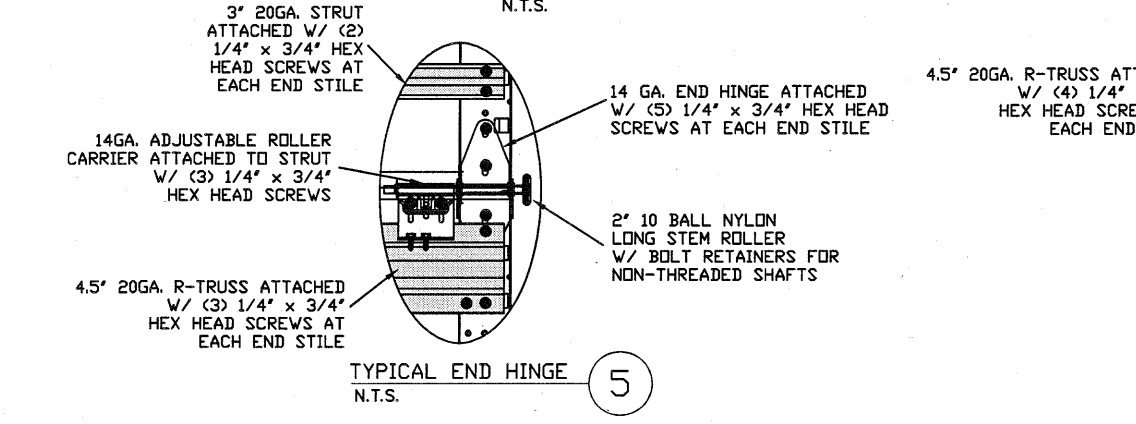


TYPICAL TOP FIXTURES  
N.T.S.

TYPICAL CENTER HINGE  
N.T.S.

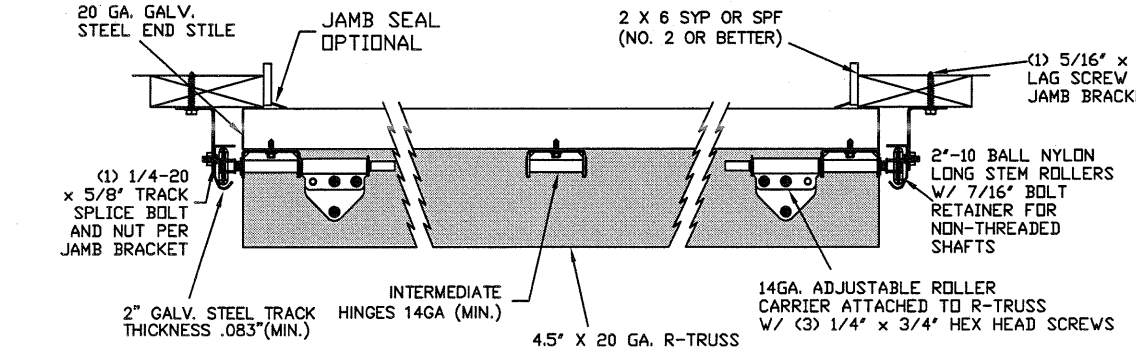


INSIDE ELEVATION  
N.T.S.

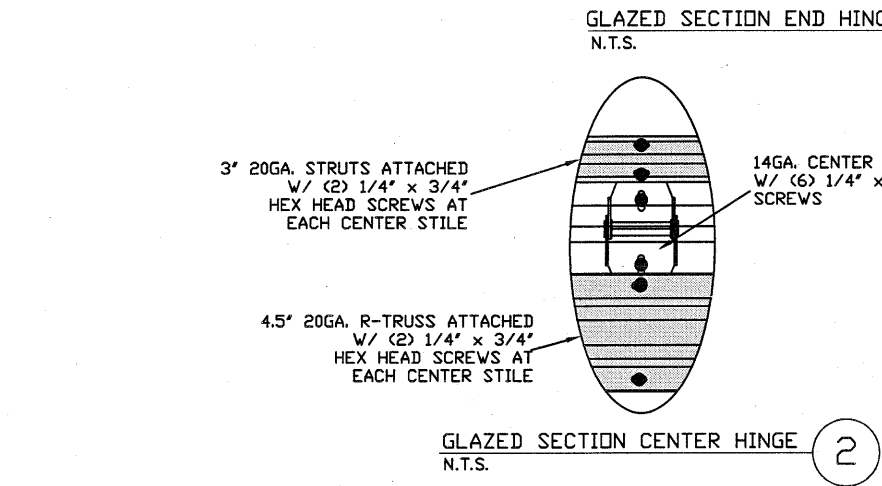


TYPICAL END HINGE  
N.T.S.

TYPICAL BOTTOM BRACKET  
N.T.S.

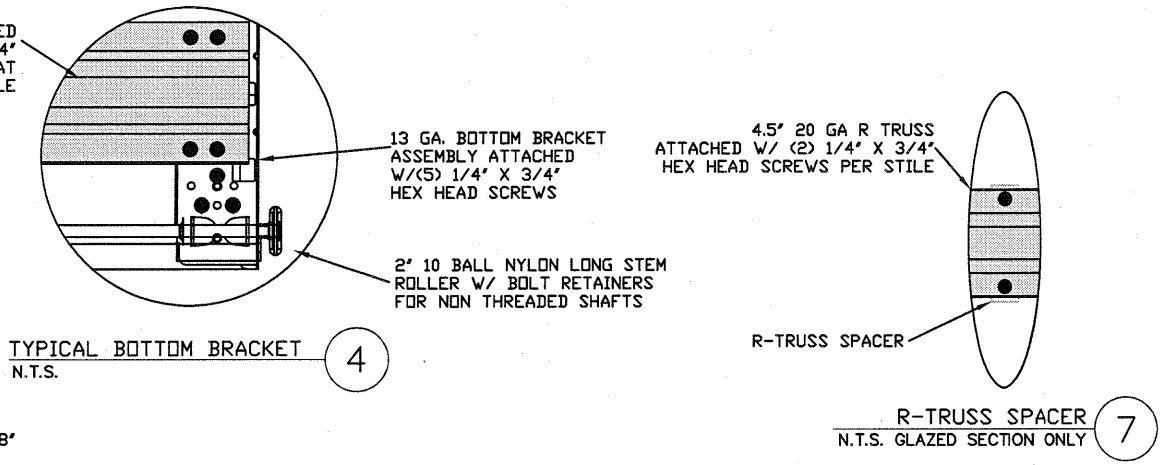


TRACK MOUNTING DETAIL  
N.T.S.

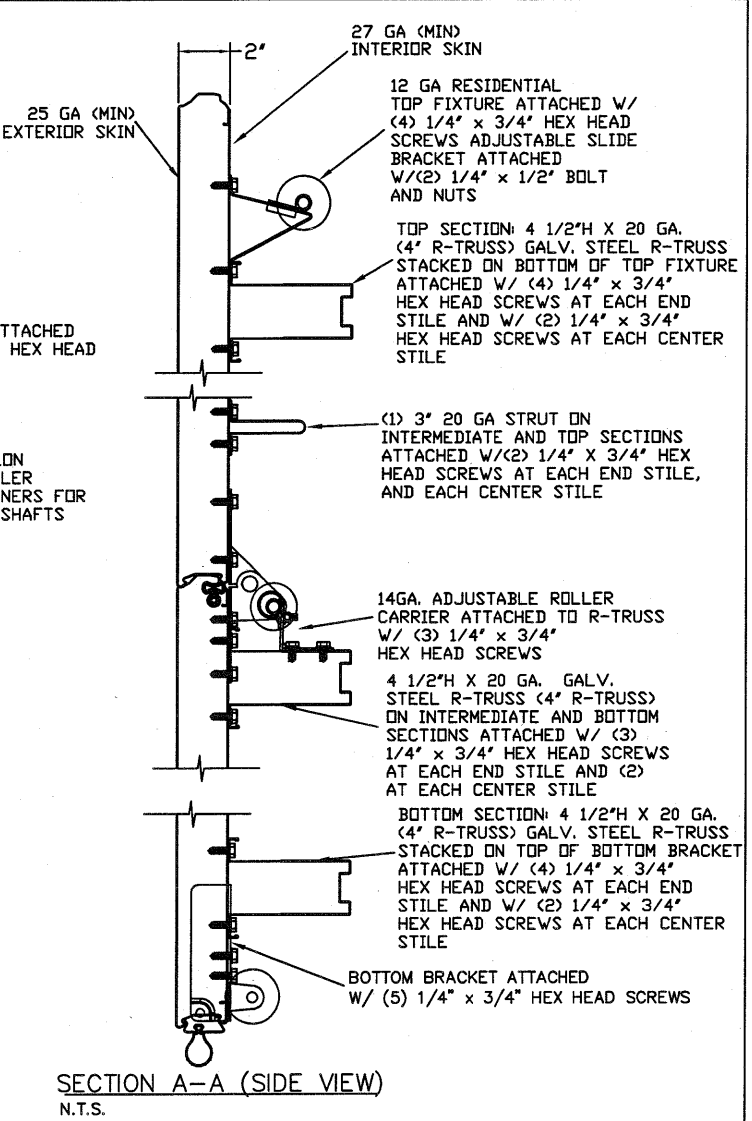


GLAZED SECTION END HINGE  
N.T.S.

GLAZED SECTION CENTER HINGE  
N.T.S.



R-TRUSS SPACER  
N.T.S. GLAZED SECTION ONLY



SECTION A-A (SIDE VIEW)  
N.T.S.

THE METHOD OF TESTING WAS IN SUBSTANTIAL CONFORMANCE WITH THE PROCEDURE DESCRIBED IN DASHA 108 & 115, AND ASTM E330. THE PRESSURES SHOWN ON THE DRAWINGS WERE CALCULATED USING ASCE 7-16 WITH THE FOLLOWING PARAMETERS (5 FEET OF DOOR WIDTH IN THE END ZONE, ROOF AT ANY SLOPE):

WIND SPEED (MPH)	168	152	145	138	133
EXPOSURE LEVEL	B	C	C	D	D
MEAN ROOF HEIGHT	30'	15'	25'	15'	25'

REV	DESCRIPTION OF REVISIONS	DATE	BY
MAX SIZE	16' x 14'		
DESIGN LOADS	+25.3 PSF -28.8 PSF		
TEST LOADS (1.5 x DESIGN LOADS)	+38.0 PSF -43.2 PSF		
LARGE MISSILE IMPACT RESISTANCE			

STATE OF TEXAS

THOMAS L. SHELMERDINE  
85829  
LICENSED PROFESSIONAL ENGINEER

Thomas L. Shelmerdine, PE (TX PE #85829)  
Structural Solutions, PA (TX Firm #004063)

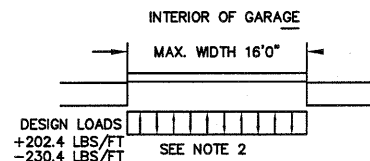
TX

5921-G W. Friendly Ave., Greensboro, NC 27410

**MODEL #3000 AMARR CLASSICA 3000**

SIZE	DRAWN BY	DRC	DATE	11/05/2020	DRAWING NUMBER
B	CHECKED BY	DLJ	DATE	11/06/2020	IRC-3316-130-24-1
ENTREMATIC 165 CARRIAGE COURT WINSTON-SALEM, N.C. 27105					SHEET 1 OF 3

## WOOD JAMB ATTACHMENT TO STRUCTURE



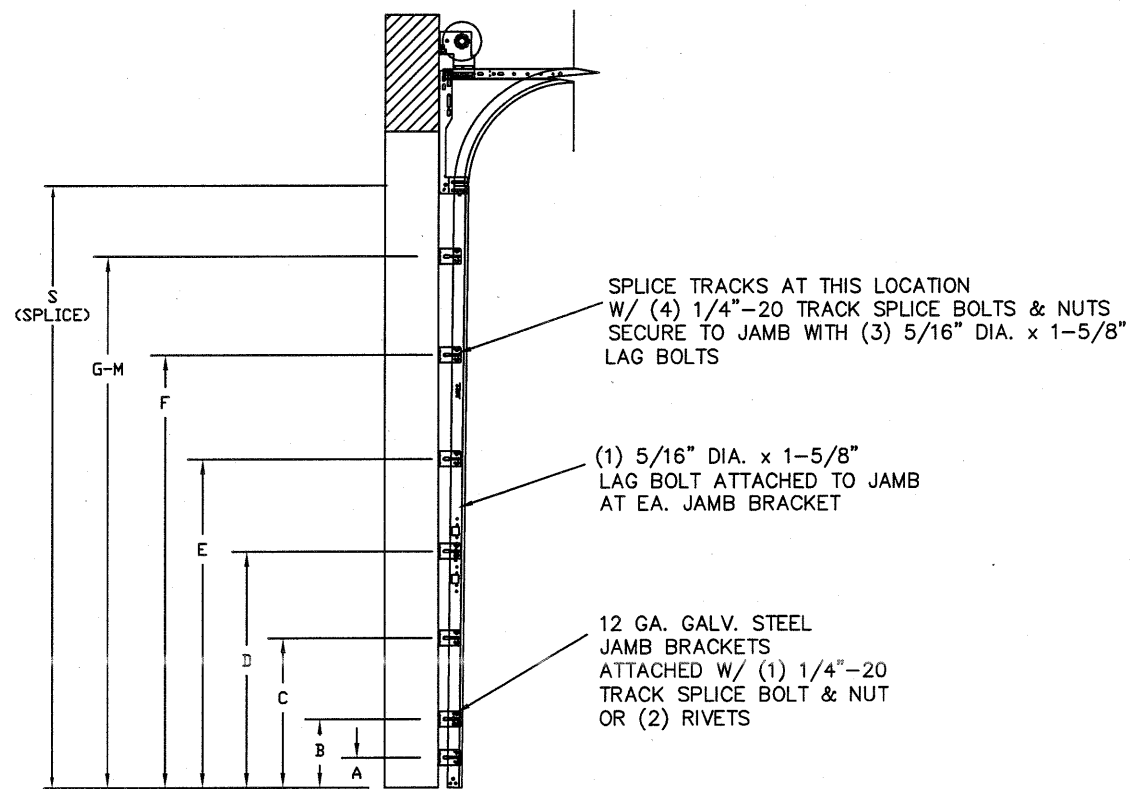
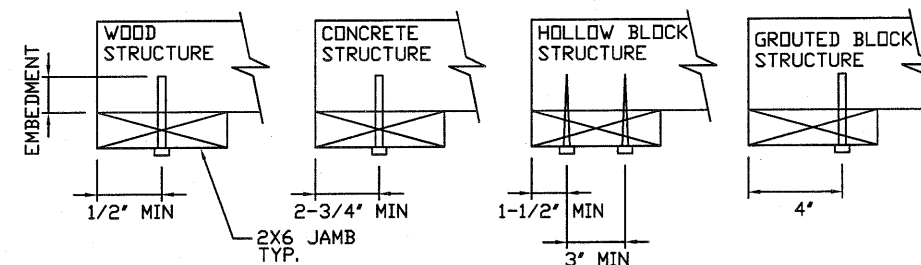
### SPECIFICATIONS AND NOTES

1. ALL THE LOAD FROM THE DOOR IS TRANSFERRED TO THE VERTICAL TRACK, FROM THE TRACK THE LOAD IS TRANSFERRED TO THE VERTICAL JAMBS. THE HORIZONTAL JAMB OR HEADER RECEIVES NO PORTION OF THE LOAD TRANSFERRED FROM THE DOOR.
2. EACH VERTICAL JAMBS RECEIVES MAXIMUM DESIGN LOADS OF: +202.4 LBS/FT & -230.4 LBS/FT
3. DOORS AND HARDWARE WILL BE DESIGNED, MANUFACTURED AND INSTALLED WITH STANDARDS AS SET FORTH BY DASMA.
4. DOOR SECTIONS SHALL BE 25 GA. EXTERIOR MIN. (.019"), AND 27 GA. INTERIOR MIN. (.014") ROLLED FORMED
5. SUPPORTING STRUCTURAL ELEMENTS SHALL BE DESIGNED BY A REGISTERED PROFESSIONAL ENGINEER FOR WIND LOADS INDICATED ON THIS DRAWING IN ADDITION TO OTHER LOADINGS.
6. REFER TO TABLE 1 ON PAGE 3 FOR STRUT SCHEDULE
7. DOOR IS MANUFACTURED AND TESTED IN ACCORDANCE WITH THE 2018 IRC/IBC

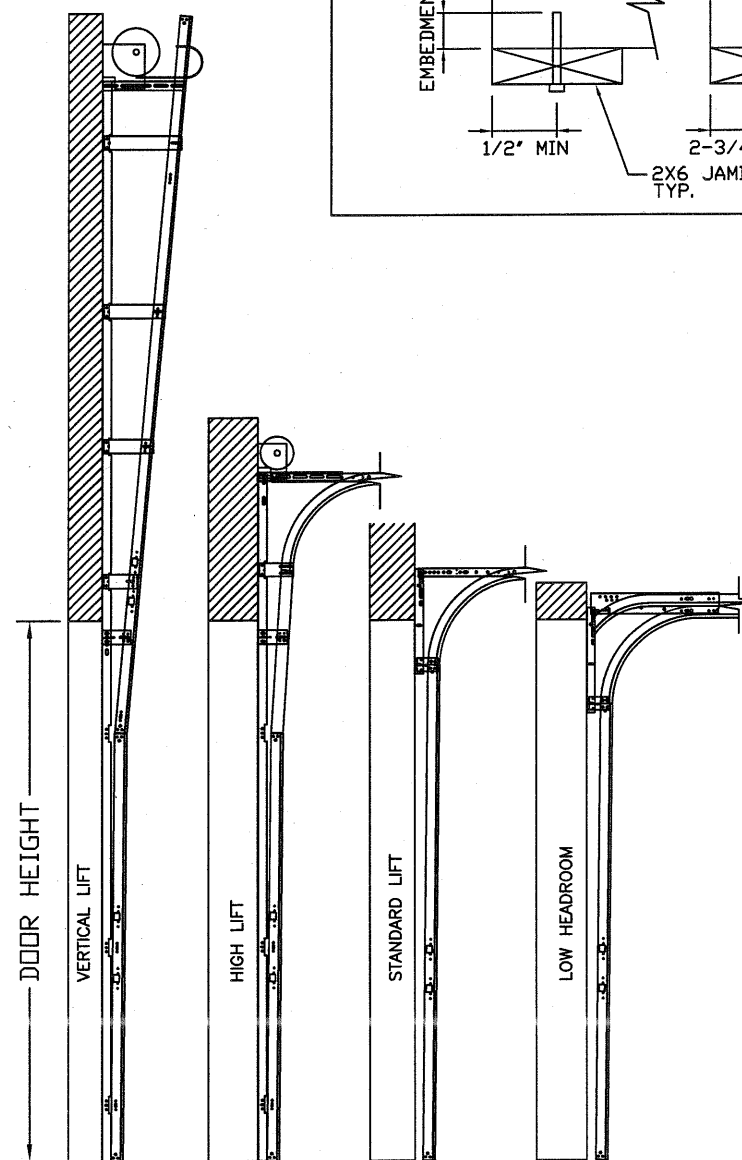
**2 X 6 VERTICAL JAMB ATTACHMENT TO WOOD FRAME STRUCTURE**  
 5/16" X 3" LAG SCREWS STARTING 6" FROM ENDS THEN 24" O.C. (1 1/2" EMBEDMENT)  
**2 X 6 VERTICAL JAMB ATTACHMENT TO 2,000 PSI CONCRETE**  
 HILTI KWIK BOLT 3/8" X 4" STARTING 6" FROM ENDS THEN 24" O.C. (2 1/2" EMBEDMENT)  
 HILTI SLEEVE ANCHOR 3/8" X 2-3/4" STARTING 6" FROM ENDS THEN 22" O.C. (1 1/4" EMBEDMENT)  
 ITW/RAMSET REDHEAD (TRU-BOLT) 3/8" X 4" STARTING 6" FROM ENDS THEN 24" O.C. (2 1/2" EMBEDMENT)  
**2 X 6 VERTICAL JAMB ATTACHMENT TO HOLLOW C-90 BLOCK**  
 SIMPSON 1/4" X 3" TITEN SCREWS STARTING 6" FROM ENDS, USE PAIRS OF FASTENERS (3" APART) AT 16" O.C. (1 1/2" EMBEDMENT)  
 HILTI 1/4" X 2-3/4" KWIK-CON II+ SCREWS STARTING 6" FROM ENDS, USE PAIRS OF FASTENERS (3" APART) AT 16" O.C. (1 1/4" EMBEDMENT)

**2 X 6 VERTICAL JAMB ATTACHMENT TO GROUTED C-90 BLOCK (2000 PSI GROUT)**  
 HILTI SLEEVE ANCHOR 3/8" X 2-3/4" STARTING 6" FROM ENDS THEN 24" O.C. (1 1/4" EMBEDMENT) (OR, USE FASTENERS FOR HOLLOW C-90 BLOCK)

- \*LAGS AND BOLTS CAN BE COUNTERSUNK TO PROVIDE A FLUSH MOUNTING SURFACE.
- \*PREPARATION OF WOOD JAMBS BY OTHERS



TRACK CONFIGURATION FOR 8' TALL DOORS  
 N.T.S SEE TABLE 2 PAGE 3



AVAILABLE TRACK CONFIGURATIONS  
 N.T.S.

REV	DESCRIPTION OF REVISIONS	DATE	BY
	MAX SIZE 16' x 14' DESIGN LOADS +25.3 PSF -28.8 PSF TEST LOADS (1.5 x DESIGN LOADS) +38.0 PSF -43.2 PSF LARGE MISSILE IMPACT RESISTANCE		
	Thomas L. Shelmerdine, PE (TX PE #85829) Structural Solutions, PA (TX Firm #F-004063)		
	<b>TX</b> 		
	<b>MODEL 3000 AMARR CLASSICA 3000</b>		
	SIZE B DRAWN BY DRC CHECKED BY DLJ	DATE 11/05/2020 DATE 11/06/2020	DRAWING NUMBER IRC-3316-130-24-1 SHEET 2 OF 3
	AMARR COMPANY 165 CARRIAGE COURT WINSTON-SALEM, N.C. 27105		

5921-G W. Friendly Ave., Greensboro, NC 27410

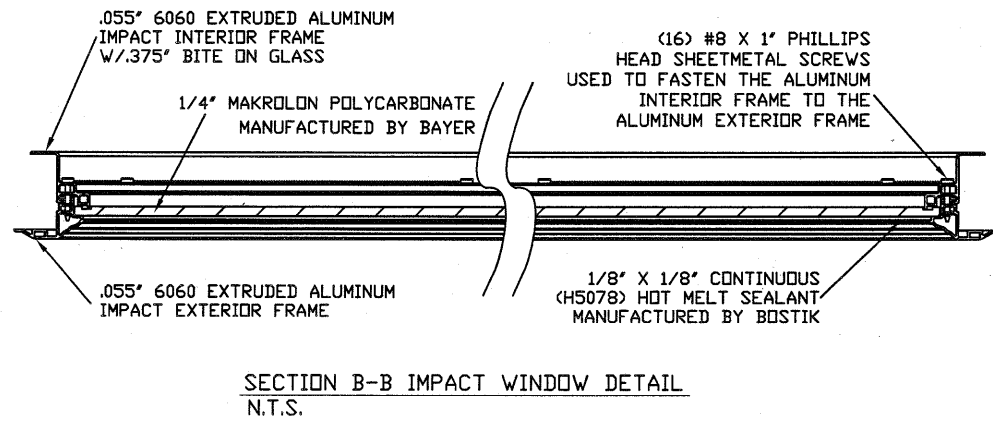
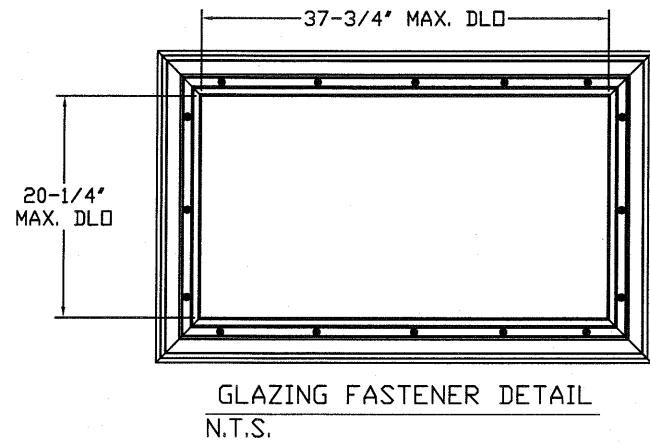


TABLE 3

Section	Center Stile Locations (Measured from Left Edge)			
	Width (ft)	1st (in)	2st (in)	3rd (in)
09' 2	55.00			
09' 4	56.00			
09' 6	57.00			
09' 8	58.00			
09' 10	59.00			
10' 0	60.00			
10' 2	61.00			
10' 4	62.00			
10' 6	63.00			
10' 8	64.00			
10' 10	65.00			
11' 0	66.00			
11' 2	67.00			
11' 4	68.00			
11' 6	69.00			
11' 8	70.00			
11' 10	71.00			
12' 0	24.63	72.00	119.38	
12' 2	25.13	73.00	120.88	
12' 4	25.63	74.00	122.38	
12' 6	26.13	75.00	123.88	
12' 8	26.63	76.00	125.38	
12' 10	27.13	77.00	126.88	
13' 0	27.63	78.00	128.38	
13' 2	28.13	79.00	129.88	
13' 4	28.63	80.00	131.38	
13' 6	29.13	81.00	132.88	
13' 8	29.63	82.00	134.38	
13' 10	30.13	83.00	135.88	
14' 0	30.63	84.00	137.38	
14' 2	31.13	85.00	138.88	
14' 4	31.63	86.00	140.38	
14' 6	32.13	87.00	141.88	
14' 8	32.63	88.00	143.38	
14' 10	33.13	89.00	144.88	
15' 0	33.63	90.00	146.38	
15' 2	34.13	91.00	147.88	
15' 4	34.63	92.00	149.38	
15' 6	47.42	93.00	138.58	
15' 8	48.02	94.00	139.98	
15' 10	48.62	95.00	141.38	
16' 0	48.42	96.00	143.58	

TABLE 1

SECTION	STRUT SIZE
TOP	4.5"
	3"
5TH	4.5"
	3"
4TH	4.5"
	3"
3RD	4.5"
	3"
2ND	4.5"
	3"
BOTTOM	4.5"
	4.5"

TABLE 2

DOOR HEIGHT	TRACK ATTACHMENT												
	A	B	C	D	E	F	G	H	I	J	K	L	M
7' 0	3.5"	10"	22"	34"	46"	58"							
7' 6	3.5"	10"	22"	34"	46"	58"	70"						
8' 0	3.5"	10"	22"	34"	46"	58"	70"						
8' 6	3.5"	10"	22"	34"	46"	58"	70"	82"					
9' 0	3.5"	10"	22"	34"	46"	58"	70"	82"					
9' 6	3.5"	10"	22"	34"	46"	58"	70"	82"	94"				
10' 0	3.5"	10"	22"	34"	46"	58"	70"	82"	94"				
11' 0	3.5"	10"	22"	34"	46"	58"	70"	82"	94"	106"			
12' 0	3.5"	10"	22"	34"	46"	58"	70"	82"	94"	106"	118"		
13' 0	3.5"	10"	22"	34"	46"	58"	70"	82"	94"	106"	118"	130"	
14' 0	3.5"	10"	22"	34"	46"	58"	70"	82"	94"	106"	118"	130"	142"

ALL TRACK AND ATTACHMENT SPACING +/-2" ALLOWED WITH SYP OR SPF NO. 2 OR BETTER ONLY

REV	DESCRIPTION OF REVISIONS	DATE	BY
	MAX SIZE 16' x 14'		
	DESIGN LOADS +25.3 PSF -28.8 PSF		
	TEST LOADS (1.5 x DESIGN LOADS) +38.0 PSF -43.2 PSF		
	LARGE MISSILE IMPACT RESISTANCE		

Thomas L. Shelmerdine, PE (TX PE #85829)  
Structural Solutions, PA (TX Firm #004063)

TX

5921-G.W. Friendly Ave., Greensboro, NC 27410

*Amarr*

MODEL 3000 AMARR CLASSICA 3000

SIZE	DRAWN BY	DRC	DATE	11/05/2020	DRAWING NUMBER
B	CHECKED BY	DLJ	DATE	11/06/2020	IRC-3316-130-24-1
AMARR COMPANY 165 CARRIAGE COURT WINSTON-SALEM, N.C. 27105					SHEET 3 OF 3