

'CLASSIC' RAISED PANEL EMBOSS DOORS						
MODELS	24 GA	24 GA INS	25 GA	25 GA INS	25 GA	25 GA INS
CLOPAY	84A, 94	--	73, 75	1500, 190	76	76V
IDEAL	4RST, 4F*	4RSF	6RST	6RSF	2RST	--
HOLMES	48, 48B	--	42, 42B	55, 55S	--	--
SHORT PANEL			LONG PANEL			

DOOR HEIGHT	# OF SECTIONS	# OF U-BARS
UP TO 7'0"	4	8
7'3" TO 8'9"	5	10
9'0" TO 10'6"	6	12
10'9" TO 12'3"	7	14
12'6" TO 14'0"	8	16
14'3" TO 15'9"	9	18
16'0"	10	20

MAX SECTION HEIGHT: 21"

SHEET: 1 OF 4						REVISIONS	
REV. NO.	ZONE:	DATE:	ECN NO.	APPVD:	DESCRIPTION		
15	-	07/2021	-	JDW	UPDATED TITLE BLOCK AND ADDED COMPLIANCE STATEMENT.		

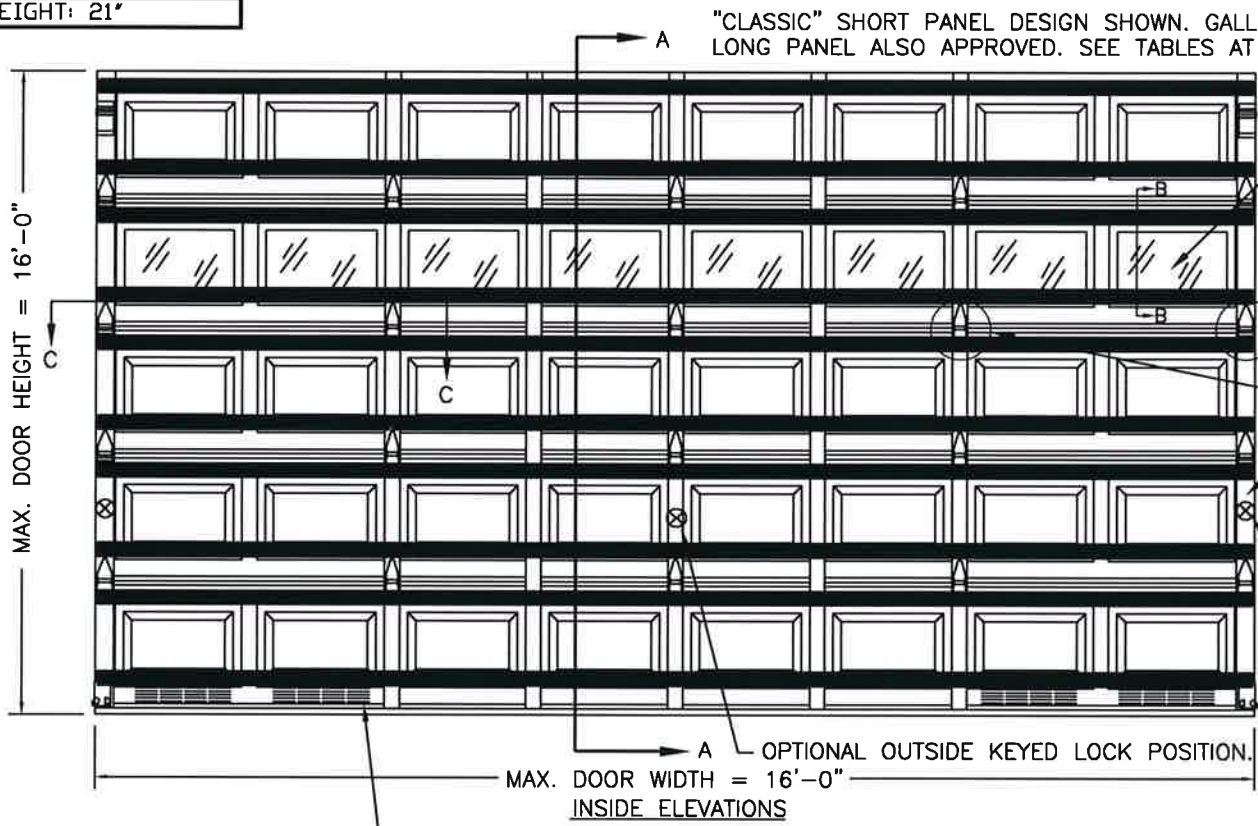
THIS PRODUCT COMPLIES WITH THE 2018 IBC/IRC.

'CLASSIC' RAISED PANEL EMBOSS DOORS						
SHORT PANEL			LONG PANEL			
DOOR WIDTH	# OF INTERM. STILES	# OF INTERM. HINGES	DOOR WIDTH	# OF STD INTERM. STILES	# OF COMM. INTERM. STILES	# OF INTERM. HINGES
9'2" TO 9'10"	1	1	9'2" TO 11'2"	1	0	1
10'0" TO 11'10"	2	2	11'4" TO 14'10"	2	1	2
12'0" TO 13'10"	3	2	15'0" TO 16'2"	3	2	3
14'0" TO 15'10"	4	4	SEE NOTE BELOW REGARDING EXTRA STILES ON LONG PANEL DOORS.			
16'0" TO 16'2"	5	3				

'CARRIAGE HOUSE' RAISED PANEL EMBOSS DOORS		
MODELS	25 GA	25 GA INS
CLOPAY 'GALLERY'	GD5S, GR5S	GD5SV, GR5SV
HOLMES 'ARTISTRY'	AR5S	AR5SV
IDEAL 'CARRIAGE HOUSE'	ED5S	ED5SV
SHORT PANEL		

'CARRIAGE HOUSE' RAISED PANEL SHORT EMBOSS DOORS		
DOOR WIDTH	# OF INTERM. STILES	# OF INTERM. HINGES
9'2" TO 10'0"	1	1
10'2" TO 11'4"	N/A	N/A
11'6" TO 13'10"	3	2
14'0" TO 16'0"	5	3

EQUIVALENT SECTION CONSTRUCTION:
 FOR ANY OF THE **SHORT-PANEL** MODELS LISTED ON THIS DRAWING, THE FOLLOWING W-LEVEL DOORS USE EQUIVALENT SECTIONS (UP TO THE MAXIMUM WIDTH ALLOWED ON THIS DRAWING).
W2, W3, W4, W5.
 ANY OF THESE W-LEVELS MAY BE SHOWN ON THE OPTIONAL SHIPPING LABEL ON THE END STILE.

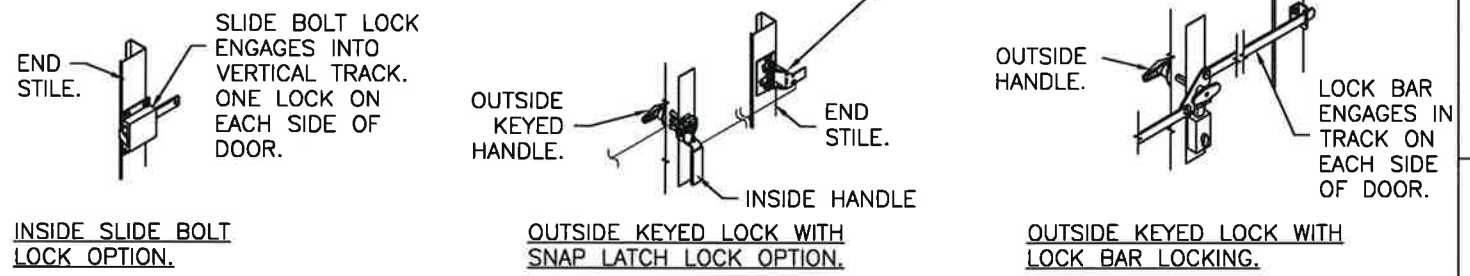


OPTIONAL GLAZING. SEE SECTION B-B ON SHEET TWO FOR DETAILS. GLAZING MAY BE IN TOP OR INTERMEDIATE SECTION (SHOWN IN INTERMEDIATE SECTION). MAX. GLAZING SIZE IS 18-1/2"x11".

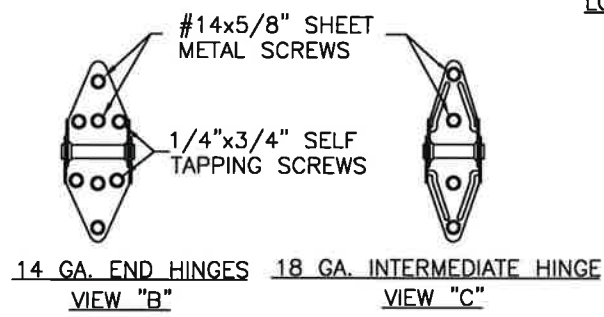
VIEW "B".
 VIEW "C".
 20 GA. END STILES ATTACHED TO DOOR SKIN WITH PATENTED TOG-L-LOC SYSTEM (TOP, BOTTOM & CENTER). ATTACHED TO TOP AND BOTTOM RAIL WITH PATENTED TOG-L-LOC SYSTEM.
 TWO POINT LOCKING INTO TRACK.

OPTIONAL OUTSIDE KEYED LOCK POSITION.
 MAX. DOOR WIDTH = 16'-0"
 INSIDE ELEVATIONS
 LOCATION OF OPTIONAL VENTS. TOTAL VENT OPENINGS: 60 IN² PER VEHICLE.

EXTRA STILES FOR LONG-PANEL MODELS.
 ADDITIONAL 18 GA. COMMERCIAL INTERM. STILES REQUIRED AS NOTED ON THE TABLES ABOVE. THESE COMMERCIAL CENTER STILES ARE ATTACHED MIDPOINT BETWEEN THE EXISTING RESIDENTIAL CENTER STILES. COMMERCIAL CENTER STILES ARE ATTACHED WITH TOG-L-LOC (TOP & BOTTOM) OR (4) 3/16" POP RIVETS OR (4) #8 SHEET METAL SCREWS.



DESIGN ENGINEER:
 MARK WESTERFIELD, P.E.
 FLORIDA P.E. #48495, NC P.E. #23832, TEXAS P.E. #91513



DESIGN LOADS: +30.0 P.S.F. & -30.0 P.S.F. TEST LOADS: +45.0 P.S.F. & -45.0 P.S.F.	8585 Duke Boulevard Mason, OH 45040 USA Tel. No. 513-770-4800 Fax No. 513-770-4853	MANUFACTURING PRODUCT CODE SHORT PANEL: PAN-2F153 LONG PANEL: PAN-2F156 PART NO.: N/A	WINDLOAD RATING W5 DP30
Unless Stated Otherwise TOLERANCES are .0 = ±.031 .00 = ±.015 .000 = ±.005 .0000 = ±.001 Degrees = ±1/2° Unless Stated Otherwise DIMENSIONS ARE IN INCHES.	Glopay CORPORATION	DESCRIPTION: CLASSIC AND CH RP STEEL PAN DC +30/-30 PSF DRAWN BY: MWW CHECKED BY: -- DWG. NO.: 101593	SCALE: NTS SHEET 1 OF 4 VER: TDI

'CLASSIC' RAISED PANEL EMBOSS DOORS						
MODELS	24 GA	24 GA INS	25 GA	25 GA INS	25 GA	25 GA INS
CLOPAY	84A, 94	--	73, 75	1500, 190	76	76V
IDEAL	4RST, 4F*	4RSF	6RST	6RSF	2RST	--
HOLMES	48, 48B	--	42, 42B	55, 55S	--	--
	SHORT PANEL			LONG PANEL		

* - MODEL 4F IS FLUSH

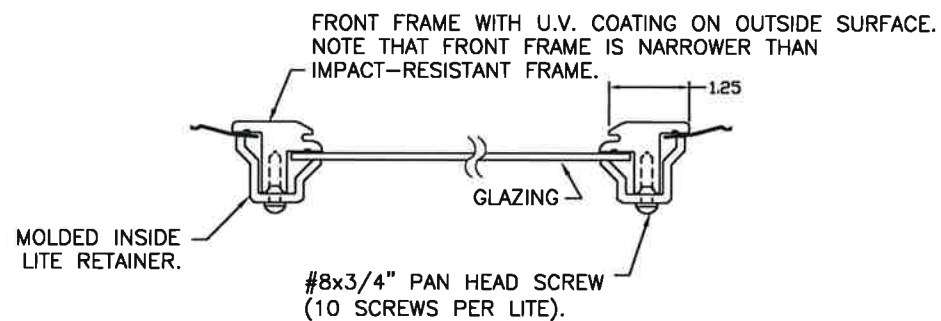
'CARRIAGE HOUSE' RAISED PANEL EMBOSS DOORS		
MODELS	25 GA	25 GA INS
CLOPAY 'GALLERY'	GD5S, GR5S	GD5SV, GR5SV
HOLMES 'ARTISTRY'	AR5S	AR5SV
IDEAL 'CARRIAGE HOUSE'	ED5S	ED5SV
	SHORT PANEL	

SHEET:
2 OF 4

REVISIONS					
REV. NO.	ZONE:	DATE:	ECN NO.	APPVD:	DESCRIPTION
15	-	-	-	-	SEE REVISION HISTORY ON SHEET ONE.

STANDARD ASSEMBLY CONSTRUCTION:
 OPTIONAL DSB OR 1/8" ACRYLIC LITES AVAILABLE. OPTIONAL ACRYLIC GLAZING IS PLASKOLITE OPTIX OR LUCITE CP APPROVED CC2 PLASTIC IN ACCORDANCE WITH IBC/FBC 2606.
 THE ENTIRE DOOR ASSEMBLY INSTALLED IN COMPLIANCE WITH THIS SECTION MEETS THE WIND LOAD REQUIREMENTS OF THE FLORIDA BUILDING CODE OR INTERNATIONAL BUILDING CODE BUT DOES NOT MEET THE IMPACT RESISTANT REQUIREMENT FOR WINDBORNE DEBRIS REGIONS (REF. CHAPTER 16 FBC/IBC).

SECTION B-B (NON-IMPACT RESISTANT GLAZING OPTION)



**STANDARD ASSEMBLY DETAILS
DRAWING 101593**



DESIGN ENGINEER:
 MARK WESTERFIELD, P.E.
 FLORIDA P.E. #48495, NC P.E. #23832, TEXAS P.E. #91513

DESIGN LOADS: +30.0 P.S.F. & -30.0 P.S.F.
 TEST LOADS: +45.0 P.S.F. & -45.0 P.S.F.

Unless Stated Otherwise
 TOLERANCES are
 .0 = ±.031
 .00 = ±.015
 .000 = ±.005
 .0000 = ±.001
 Degrees = ±1/2'
 Unless Stated Otherwise
 DIMENSIONS ARE IN INCHES.

Clopay CORPORATION
 8585 Duke Boulevard
 Mason, OH 45040 USA
 Tel. No. 513-770-4800
 Fax No. 513-770-4853

MANUFACTURING PRODUCT CODE
 SHORT PANEL: PAN-2F153
 LONG PANEL: PAN-2F156
 PART NO.: N/A

WINDLOAD RATING
W5 DP30

DESCRIPTION: CLASSIC AND CH RP STEEL PAN DC +30/-30 PSF

DRAWN BY: MWW	DATE: 1/26/96	SCALE: NTS	DWG. B
CHECKED BY: --	DATE: --	SHEET 2 OF 4	SIZE B
DWG. NO.: 101593		VER: TDI	

'CLASSIC' RAISED PANEL EMBOSS DOORS						
MODELS	24 GA	24 GA INS	25 GA	25 GA INS	25 GA	25 GA INS
CLDPAY	84A, 94	--	73, 75	1500, 190	76	76V
IDEAL	4RST, 4F*	4RSF	6RST	6RSF	2RST	--
HOLMES	48, 48B	--	42, 42B	55, 55S	--	--
	SHORT PANEL			LONG PANEL		

* - MODEL 4F IS FLUSH

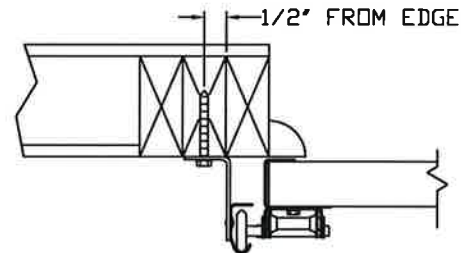
'CARRIAGE HOUSE' RAISED PANEL EMBOSS DOORS		
MODELS	25 GA	25 GA INS
CLDPAY 'GALLERY'	GD5S, GR5S	GD5SV, GR5SV
HOLMES 'ARTISTRY'	AR5S	AR5SV
IDEAL 'CARRIAGE HOUSE'	ED5S	ED5SV
	SHORT PANEL	

SHEET: 3 OF 4

REVISIONS					
REV. NO.	ZONE	DATE	ECN NO.	APPVD.	DESCRIPTION
15	-	-	-	-	SEE REVISION HISTORY ON SHEET ONE.

IN THE CASE OF GYPSUM WALLBOARD LOCATED AT OR NEAR THE DOOR OPENING LOCATION THERE ARE TWO ACCEPTABLE ALTERNATIVES:

- 1) THE WALLBOARD CAN BE CUT AWAY FROM THE DOOR OPENING AND 2X6 SOUTHERN YELLOW PINE WOOD JAMBS MOUNTED DIRECTLY TO THE SUPPORTING STRUCTURE TO CREATE THE MOUNTING SURFACE. ALTERNATIVELY, THE BRACKETS MAY BE ATTACHED DIRECTLY TO THE SUPPORTING STRUCTURE. SEE DETAIL BELOW. THE CENTER OF SCREW HOLE MUST BE AT LEAST 1/2" FROM BOTH EDGES FOR A 5/16" LAG SCREW.
- 2) IF THE WALLBOARD IS NOT CUT AWAY TO EXPOSE THE UNDERLYING STRUCTURE (WOOD FRAMING MEMBERS), A 2X6 SOUTHERN YELLOW PINE WOOD BUCK OVER SHALL BE INSTALLED THE WALLBOARD FRAMING THE OPENING USING THE JAMB ATTACHMENT FASTENERS LISTED BELOW. HOWEVER, THE JAMB ATTACHMENT FASTENERS MUST BE OF A SUFFICIENT INCREASED LENGTH TO ACCOUNT FOR THE THICKNESS OF THE WALLBOARD TO ENSURE PROPER FASTENER EMBEDMENT INTO THE STRUCTURAL FRAMING MEMBERS OF THE SUPPORTING STRUCTURE.



VERTICAL JAMB ATTACHMENT (WOOD FRAME BUILDINGS):

3/8"x3" LAG SCREWS ON 24" CENTERS. 1-1/8" MIN. O.D. WASHER REQUIRED. LAG SCREWS MAY BE COUNTERSUNK (BUT NOT REQUIRED) TO PROVIDE A FLUSH MOUNTING SURFACE. HORIZONTAL JAMBS DO NOT TRANSFER LOAD.

VERTICAL JAMB ATTACHMENT (C-90 BLOCK OR 2,000 PSI MIN. CONCRETE COLUMN):

3/8"x3" SLEEVE ANCHOR BOLTS ON 17" CENTERS (2,000 PSI MIN. CONCRETE). WASHERS INCLUDED WITH SLEEVE ANCHORS.

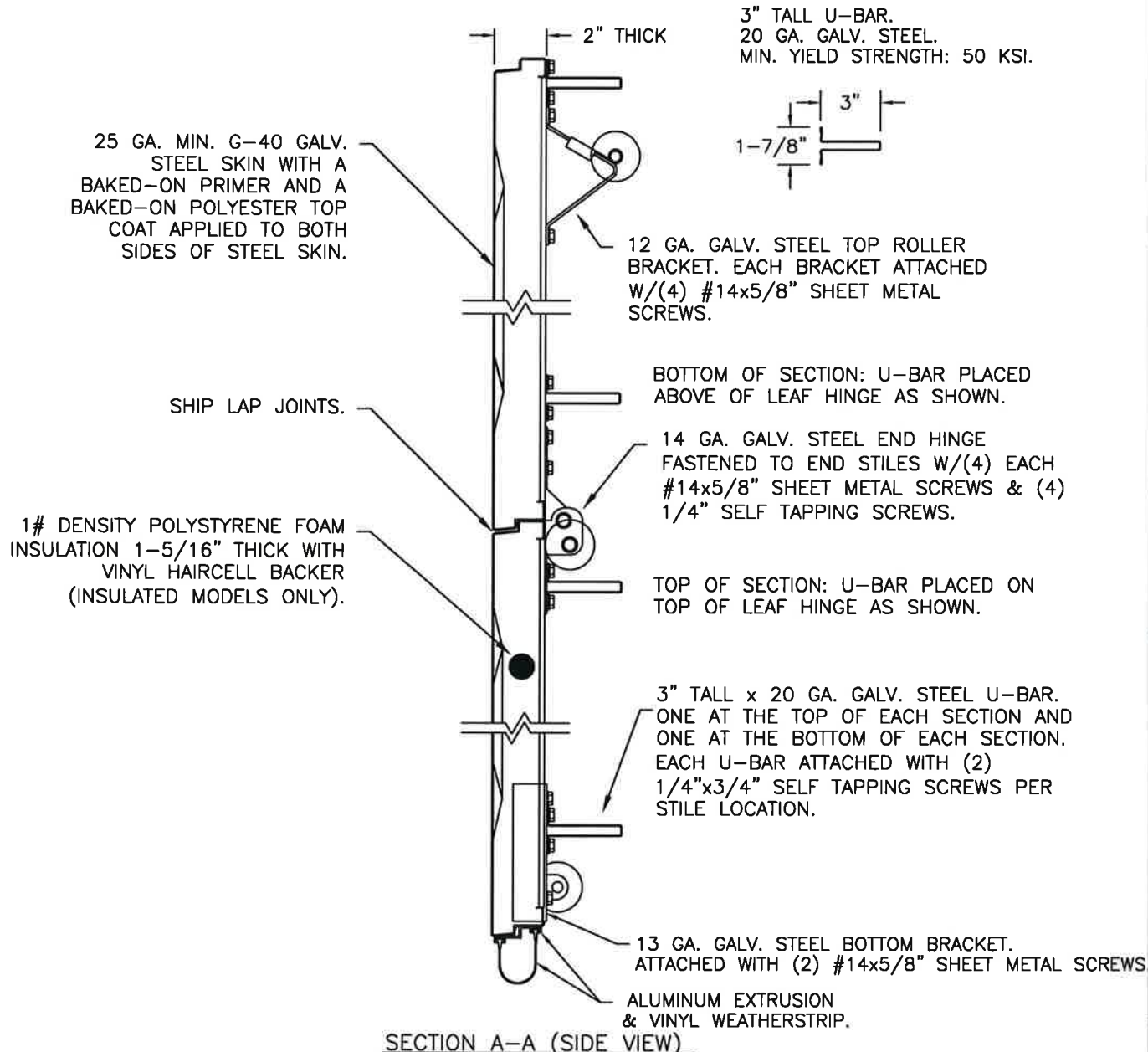
OR
1/4"x3" TAPCON SCREWS ON 14" CENTERS (2,000 PSI MIN. CONCRETE) OR 8" CENTERS (C-90 BLOCK). 1" MIN. O.D. WASHERS REQUIRED WITH TAPCONS.

ANCHORS MAY BE COUNTERSUNK (BUT NOT REQUIRED) TO PROVIDE A FLUSH MOUNTING SURFACE. HORIZONTAL JAMBS DO NOT TRANSFER LOAD.

OTHER JAMB CONFIGURATIONS: REFER TO DASMA TDS-161. A LICENSED DESIGN PROFESSIONAL MAY ALSO BE EMPLOYED TO APPROVE ALTERNATE FASTENERS AND/OR JAMB CONFIGURATIONS.

SEE ADDITIONAL DETAILS IN "CONNECTING JAMB TO EXISTING STRUCTURES" JAMB FASTENER ANALYSIS CBPC-JFA-0001 (AVAILABLE ON TDI WEBSITE OR FROM MANUFACTURER).

NOTE: THE DESIGN OF THE SUPPORTING STRUCTURAL ELEMENTS SHALL BE THE RESPONSIBILITY OF THE PROFESSIONAL OF RECORD FOR THE BUILDING OR STRUCTURE AND IN ACCORDANCE WITH CURRENT BUILDING CODES FOR THE LOADS LISTED ON THE DRAWING.



SECTION A-A (SIDE VIEW)



Mark Westerfield
7/21/21

DESIGN ENGINEER:
MARK WESTERFIELD, P.E.
FLORIDA P.E. #48495, NC P.E. #23832, TEXAS P.E. #91513

DESIGN LOADS: +30.0 P.S.F. & -30.0 P.S.F.
TEST LOADS: +45.0 P.S.F. & -45.0 P.S.F.

Unless Stated Otherwise TOLERANCES are

.0	= ±.031
.00	= ±.015
.000	= ±.005
.0000	= ±.001
Degrees	= ±1/2'

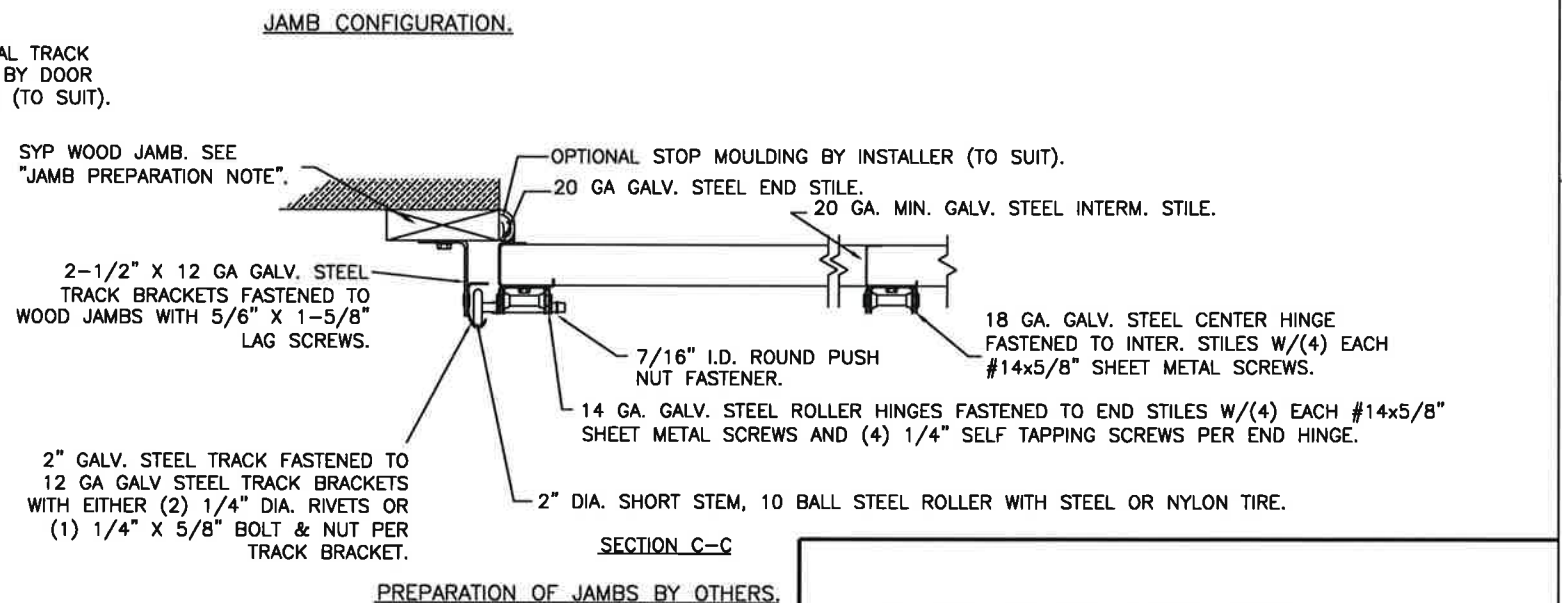
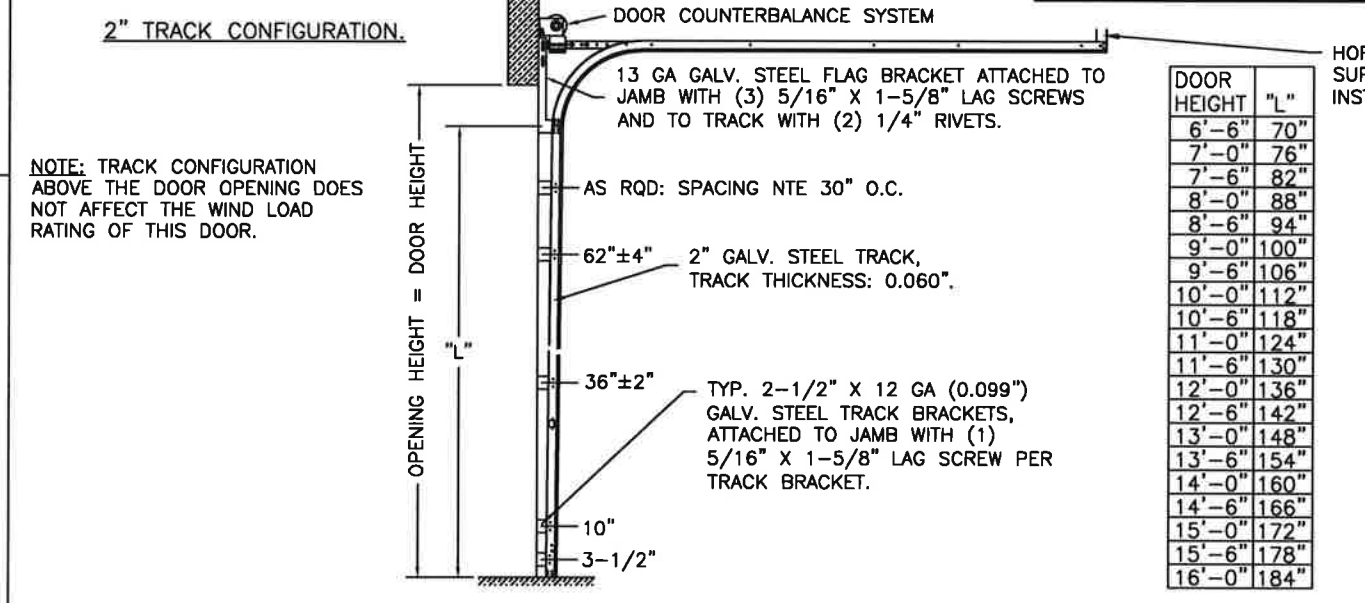
Clopay CORPORATION
8585 Duke Boulevard
Mason, OH 45040 USA
Tel. No. 513-770-4800
Fax No. 513-770-4853

MANUFACTURING PRODUCT CODE
SHORT PANEL: PAN-2F153
LONG PANEL: PAN-2F156
PART NO.: N/A

WINDLOAD RATING
W5 DP30

DESCRIPTION: CLASSIC AND CH RP STEEL PAN DC +30/-30 PSF	SCALE: NTS	DWG. SIZE: B
DRAWN BY: MWW	DATE: 1/26/96	SHEET 3 OF 4
CHECKED BY: --	DATE: --	VER: TDI
DWG. NO.: 101593		

'CLASSIC' RAISED PANEL EMBOSS DOORS							'CARRIAGE HOUSE' RAISED PANEL EMBOSS DOORS			REVISIONS					
MODELS	24 GA	24 GA INS	25 GA	25 GA INS	25 GA	25 GA INS	MODELS	25 GA	25 GA INS	REV. NO.	ZONE:	DATE:	ECN NO.	APPVD:	DESCRIPTION
CLOPAY	84A, 94	--	73, 75	1500, 190	76	76V	CLOPAY 'GALLERY'	GD5S, GR5S	GD5SV, GR5SV	15	-	-	-	-	SEE REVISION HISTORY ON SHEET ONE.
IDEAL	4RST, 4F*	4RSF	6RST	6RSF	2RST	--	HOLMES 'ARTISTRY'	AR5S	AR5SV						
HOLMES	48, 48B	--	42, 42B	55, 55S	--	--	IDEAL 'CARRIAGE HOUSE'	ED5S	ED5SV						
	SHORT PANEL			LONG PANEL			SHORT PANEL								



3" TRACK IS ALSO AVAILABLE.

STATE OF TEXAS
 MARK WESTERFIELD
 91513
 LICENSED PROFESSIONAL ENGINEER

Mark Westerfield
 7/21/21

DESIGN ENGINEER:
 MARK WESTERFIELD, P.E.
 FLORIDA P.E. #48495, NC P.E. #23832, TEXAS P.E. #91513

DESIGN LOADS: +30.0 P.S.F. & -30.0 P.S.F.
 TEST LOADS: +45.0 P.S.F. & -45.0 P.S.F.

Unless Stated Otherwise
 TOLERANCES are
 .0 = ±.031
 .00 = ±.015
 .000 = ±.005
 .0000 = ±.001
 Degrees = ±1/2"
 Unless Stated Otherwise
 DIMENSIONS ARE IN INCHES.

Clopay CORPORATION
 8585 Duke Boulevard
 Mason, OH 45040 USA
 Tel. No. 513-770-4800
 Fax No. 513-770-4853

MANUFACTURING PRODUCT CODE
 SHORT PANEL: PAN-2F153
 LONG PANEL: PAN-2F156
 PART NO.: N/A

WINDLOAD RATING
W5 DP30

DESCRIPTION: CLASSIC AND CH RP STEEL PAN DC +30/-30 PSF
 DRAWN BY: MWW DATE: 1/26/96 SCALE: NTS DWG. SIZE B
 CHECKED BY: -- DATE: -- SHEET 4 OF 4
 DWG. NO.: 101593 VER: TDI