

NOTES:

1. GLAZING OPTION - .125" MINIMUM ANNEALED DSB GLAZING IN MOLDED FRAMES SCREWED TOGETHER IN TOP SECTION ONLY (WITH OR WITHOUT DECORATIVE INSERTS) MEETS UNIFORM STATIC DESIGN PRESSURES SHOWN ON THIS DRAWING. FOR THE VERTICAL RAISED PANEL GLAZING SHALL HAVE A DAYLIGHT OPENING OF 11.375" X 16.25" AND A MINIMUM OF (8) #8x1" SCREWS (2X ALONG THE HORIZONTAL AND 2X ALONG THE VERTICAL) AND FOR THE HORIZONTAL RAISED PANEL GLAZING SHALL HAVE A DAYLIGHT OPENING OF 24.375" X 6.5" AND A MINIMUM OF (8) #8x1" SCREWS (3X ALONG THE HORIZONTAL AND 1X ALONG THE VERTICAL). REFER TO DETAIL E ON SH3. GLAZING IS NOT IMPACT RESISTANT AND DOES NOT MEET THE REQUIREMENTS FOR WIND-BORNE DEBRIS REGION.

2. VINYL OR WOOD DOOR STOP-MOLDING NAILED WITH 6D COMMON NAILS ON 6" MAXIMUM SPACING MUST OVERLAP TOP AND SIDES OF PANELS 7/16" MINIMUM.

3. SLIDE LOCK OR DRAWBAR OPERATOR REQUIRED.

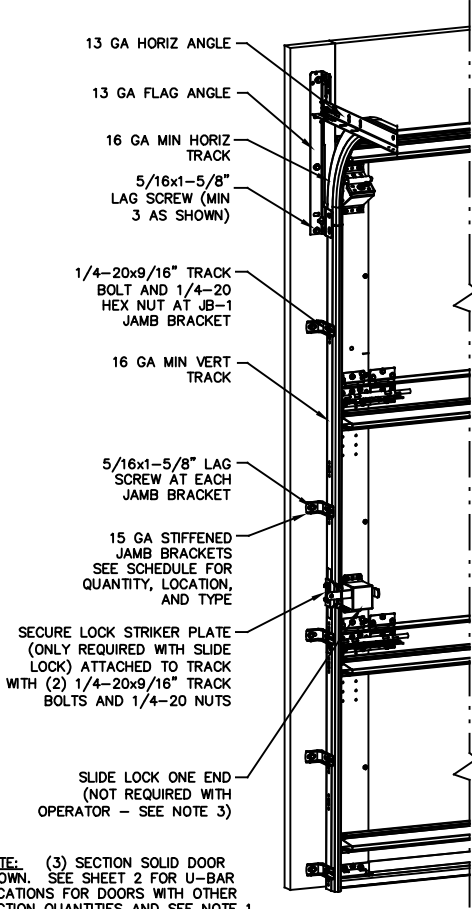
4. SECTION SHALL BE CONSTRUCTED WITH FOAMED IN PLACE POLYURETHANE FOAM INSULATION CHEMICALLY BONDED TO A MINIMUM .070" FIBERGLASS FACER AND 27 GA STEEL BACKER.

5. THE DESIGN OF THE SUPPORTING STRUCTURAL ELEMENTS SHALL BE THE RESPONSIBILITY OF THE PROFESSIONAL OF RECORD FOR THE BUILDING OR STRUCTURE AND IN ACCORDANCE WITH CURRENT BUILDING CODES FOR THE LOADS LISTED ON THIS DRAWING.

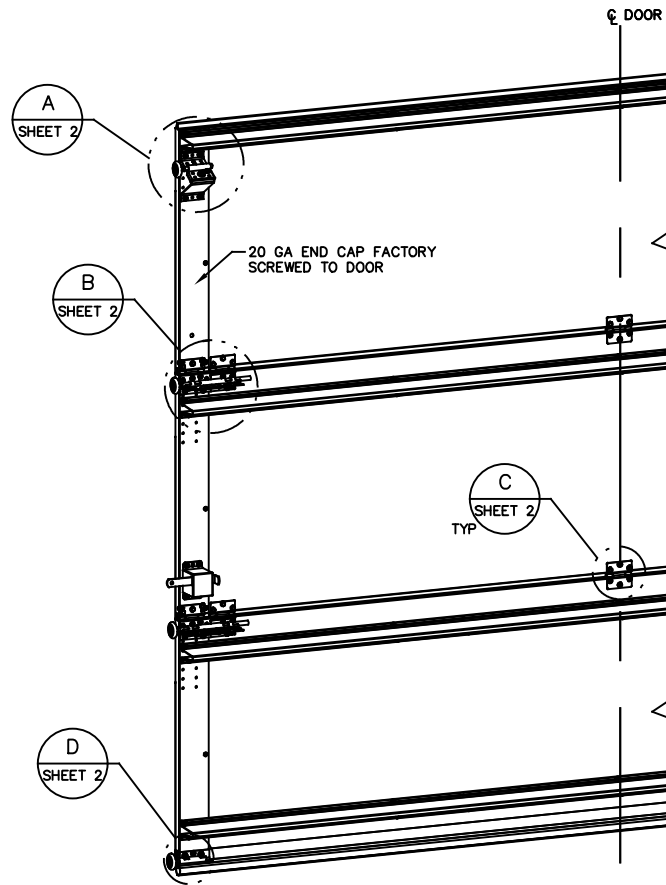
6. DOOR JAMB TO BE MINIMUM 2x4 SOUTHERN PINE. REFER TO JAMB CONNECTION SUPPLEMENT FOR ATTACHMENT TO SUPPORTING STRUCTURE.

7. SECTION SHALL HAVE A 5" 25 GA STEEL BACKUP PLATE ACROSS THE TOP OF EACH SECTION.

8. FOR LOW HEAD ROOM LIFT CONDITIONS, TOP BRACKET SHALL BE A 13 GA LHR 7/4 TOP BRACKET WITH A MINIMUM OF (3) 1/4-14x7/8" SELF DRILLING CRIMPITE SCREWS IN LIEU OF THE BRACKET SHOWN ON THIS DRAWING. U-BAR ON TOP SECTION SHALL BE INSTALLED ON TOP OF LHR TOP BRACKETS.



NOTE: (3) SECTION SOLID DOOR SHOWN. SEE SHEET 2 FOR U-BAR LOCATIONS FOR DOORS WITH OTHER SECTION QUANTITIES AND SEE NOTE 1 THIS SHEET FOR GLAZING OPTION.



REVISIONS

- P CORRECTED BACKER PLATE GAGE IN NOTES. GRT 4/10/07
- P1 CHANGED BACKER STEEL FROM 30 GA TO 27 GA GRT 3/31/08
- P2 ADDED LHR OPTION. UPDATED TITLE BLOCK. UPDATED PER TESTING GRT 8/14/13
- P3 UPDATED PER TESTING GRT 12/11/13
- P4 UPDATED PER TESTING GRT 5/14/14
- E UPDATED PER PCR32744. UPDATED REV LEVELS TO ALPHABETICAL 12/8/21 SW

SUPERIMPOSED DESIGN PRESSURE LOADS ON SUPPORTING STRUCTURE

MAX DOOR WIDTH	DOOR HEIGHT	UNIFORM LOAD EACH JAMB (PLF)
8'-0"	ALL	+91.6/-105.2
9'-0"	ALL	+103.1/-118.4

JAMB BRACKET SCHEDULE

DOOR HEIGHT	NO. OF SECTIONS	NO. OF JAMB BRACKETS (EACH JAMB)	LOCATION OF CENTERLINE OF JAMB BRACKETS MEASURED FROM BOTTOM OF TRACK (ALL DIMENSIONS ± 2")
7'-0"	3	5	2" (JB), 14" (JB), 29-1/2" (JB), 44" (JB), 63-1/4" (JB)
8'-0"	4	6	2" (JB), 14" (JB), 23" (JB), 34" (JB), 46" (JB), 66-1/2" (JB)
> 8'-0"			SEE NOTE BELOW

NOTE:

(JB-1) FOLLOWING DIMENSION DENOTES SLOTTED JAMB BRACKET ATTACHED TO TRACK WITH 1/4-20x9/16" TRACK BOLT AND NUT.

(QI) FOLLOWING DIMENSION DENOTES QUICK INSTALL JAMB BRACKET INSTALLED IN BUTTERFLY SLOT. NO ADDITIONAL HARDWARE NEEDED TO ATTACH TO TRACK.

ALL DOORS GREATER THAN 8' IN HEIGHT REQUIRE USE OF CONTINUOUS WALL ANGLE. SEE SUPPLEMENT TRACK CHART FOR DETAILS.

NOTE: COMPLIES WITH IBC/IRC 2018.



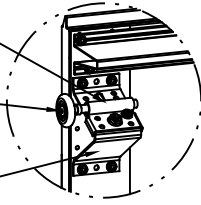
A DIVISION OF OVERHEAD DOOR CORP
3395 ADDISON DRIVE
PENSACOLA, FLORIDA 32514
(850) 474-9890

JOHN E. SCATES, PE
2560 KING ARTHUR #124-54
LEWISVILLE, TX 75056
FL PE 51737 TX PE 56308/F2203
PROFESSIONAL ENGINEER'S SEAL PROVIDED ONLY FOR VERIFICATION OF WINDLOAD CONSTRUCTION DETAILS.

STATIC PRESSURE RATINGS		APPROVED SIZES	SCALE: N.T.S.	SIZE: A	
DESIGN (PSF):	+22.90/-26.30	MAX WIDTH: 9'-0"		DATE	NAME
TEST (PSF):	+34.35/-39.45	MAX HEIGHT: 10'-0"		7/12/06	GRT
IMPACT/CYCLIC RATED (YES/NO): NO		MAX SECTION HEIGHT: 28"	CHECKED	4/11/07	MRB
MODEL 9800			SHEET 1 OF 3		
WINDLOAD SPECIFICATION OPTION CODE 1200			DRAWING PART NO.	REV.	
			327931	E	

U-BAR LOCATIONS

13 GA ROLLER SLIDE ATTACHED TO BRACKET WITH 5/16-18 BOLT & NUT IN CENTER SLOT AND 1/4-20x9/16" TRACK BOLT & 1/4-20 HEX NUT THROUGH ANY TWO ALIGNING HOLES



2" STEEL ROLLER WITH 4" STEM
13 GA COMMERCIAL 'A' FRAME TOP BRACKET ATTACHED WITH (4) 1/4-14x7/8" SELF DRILLING CRIMPITTE SCREWS

(2) 15 GA HINGE LEAFS ATTACHED WITH (3) 1/4-14x5/8" CRIMPITTE SCREWS EACH

14 GA HINGE BASE FACTORY ATTACHED TO DOOR WITH (5) 1/4-14x1/2" SELF DRILLING CRIMPITTE SCREWS

2" STEEL ROLLER WITH 9" 1144 GRADE OR EQUIVALENT STEM

13 GA ROLLER SLIDE FACTORY RIVETED TO HINGE BASE

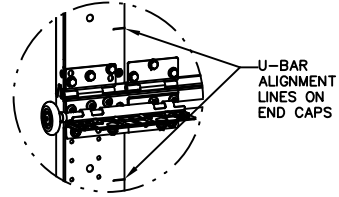
13 GA REINFORCING BRACKET ATTACHED TO HINGE BASE WITH (2) 1/4-20x5/8" CARRIAGE BOLTS & 1/4-20 HEX NUTS AND ATTACHED TO DOOR WITH (2) 1/4-14x7/8" SELF DRILLING CRIMPITTE SCREWS

15 GA HINGE ATTACHED WITH (3) FIELD ATTACHED 1/4-14x5/8" CRIMPITTE SCREWS AND (3) FACTORY ATTACHED 1/4-14x1/2" SELF DRILLING CRIMPITTE SCREWS

12 GA BOTTOM BRACKET FACTORY ATTACHED WITH (2) 1/4-14x1/2" SELF DRILLING CRIMPITTE SCREWS AND (1) 1/4-14x5/8" TAMPER RESISTANT SCREW

2" STEEL ROLLER WITH 4" STEM

DETAIL A
DETAIL B
DETAIL C
DETAIL D



U-BAR ALIGNMENT LINES ON END CAPS

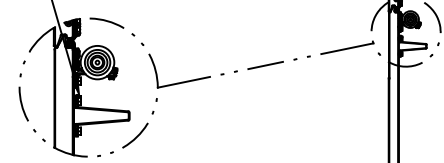
DETAIL A

DETAIL B

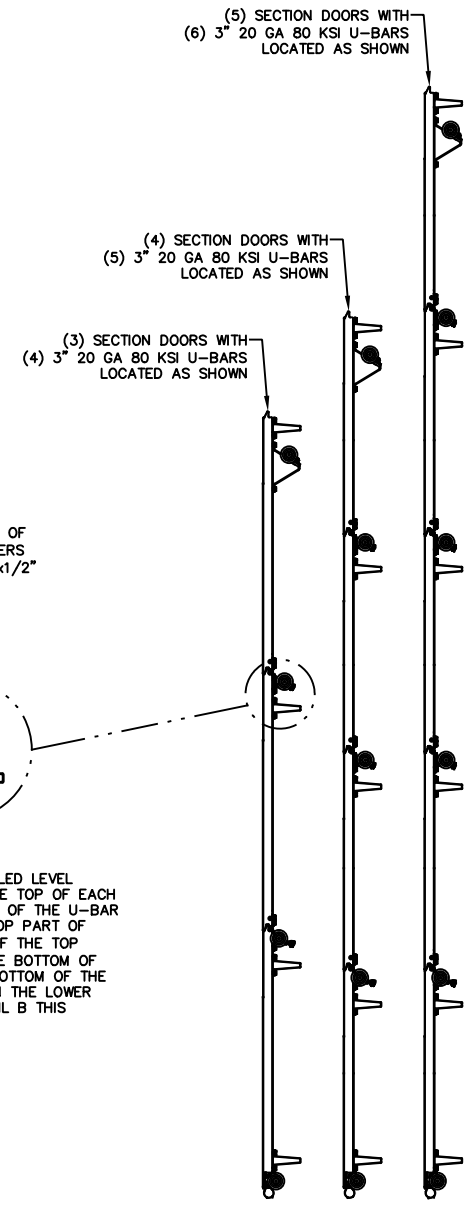
DETAIL C

DETAIL D

ALL U-BARS SHALL BE ATTACHED WITH (1) FASTENER AT EACH HOLE LOCATION (MINIMUM OF (10) FASTENERS EACH U-BAR). ALL FASTENERS USED TO ATTACH U-BARS SHALL BE 1/4-14x1/2" SELF DRILLING CRIMPITTE SCREWS EXCEPT AT ENDS WHICH SHALL BE 1/4-14x7/8" SELF DRILLING CRIMPITTE SCREWS.



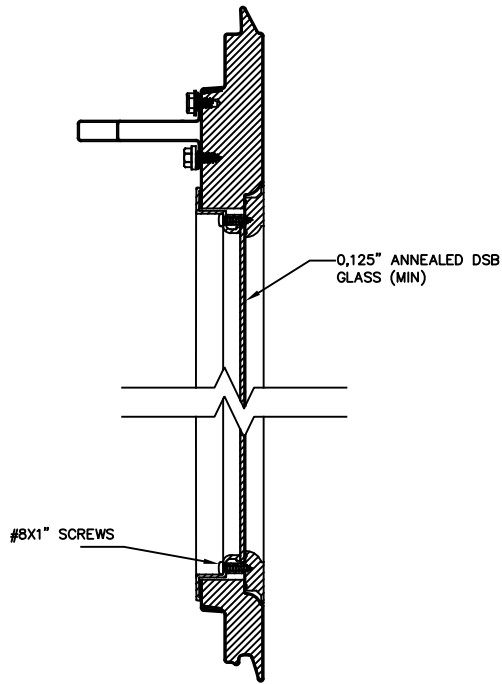
NOTE: U-BARS SHALL BE INSTALLED LEVEL ACROSS DOOR. THE U-BAR ON THE TOP OF EACH SECTION SHALL HAVE THE BOTTOM OF THE U-BAR ALIGNED WITH THE LINE ON THE TOP PART OF THE END CAP (EXCEPT THE TOP OF THE TOP SECTION). THE U-BAR ACROSS THE BOTTOM OF EACH SECTION SHALL HAVE THE BOTTOM OF THE U-BAR ALIGNED WITH THE LINE ON THE LOWER PART OF THE END CAP. SEE DETAIL B THIS SHEET.



JOHN E. SCATES, PE
2560 KING ARTHUR #124-54
LEWISVILLE, TX 75056
FL PE 51737 TX PE 56308/F2203
PROFESSIONAL ENGINEER'S SEAL PROVIDED ONLY FOR VERIFICATION OF WINDLOAD CONSTRUCTION DETAILS.

Wayne Dalton
A DIVISION OF OVERHEAD DOOR CORP
3395 ADDISON DRIVE
PENSACOLA, FLORIDA 32514
(850) 474-9890

STATIC PRESSURE RATINGS		APPROVED SIZES		SCALE: N.T.S.		SIZE: A	
DESIGN (PSF):	+22.90/-26.30	MAX WIDTH:	9'-0"	DATE	NAME		
TEST (PSF):	+34.35/-39.45	MAX HEIGHT:	10'-0"	DRAWN	7/12/06		GRT
IMPACT/CYCLIC RATED (YES/NO): NO		MAX SECTION HEIGHT: 28"	CHECKED	4/11/07		MRB	
MODEL 9800				SHEET 2 OF 3			
WINDLOAD SPECIFICATION OPTION CODE 1200				DRAWING PART NO.		REV.	
				327931		E	



NON-IMPACT FRAME
(STATIC RATED)

DETAIL E

JOHN E. SCATES, PE
2560 KING ARTHUR #124-54
LEWISVILLE, TX 75056
FL PE 51737 TX PE 56308/F2203
PROFESSIONAL ENGINEER'S SEAL PROVIDED ONLY FOR
VERIFICATION OF WINDLOAD CONSTRUCTION DETAILS.



A DIVISION OF OVERHEAD DOOR CORP
3395 ADDISON DRIVE
PENSACOLA, FLORIDA 32514
(850) 474-9890

STATIC PRESSURE RATINGS		APPROVED SIZES		SCALE: N.T.S.		SIZE: A	
DESIGN (PSF):	+22.90/-26.30	MAX WIDTH:	9'-0"	DATE	NAME		
TEST (PSF):	+34.35/-39.45	MAX HEIGHT:	10'-0"	DRAWN	GRT		
IMPACT/CYCLIC RATED (YES/NO): NO		MAX SECTION HEIGHT: 28"	CHECKED	4/11/07		MRB	
MODEL 9800				SHEET 3 OF 3			
WINDLOAD SPECIFICATION OPTION CODE 1200				DRAWING PART NO.		REV.	
				327931		E	