

**NOTES:**

1. GLAZING OPTION - .125" MINIMUM DSB GLAZING MEETS UNIFORM STATIC DESIGN PRESSURES SHOWN ON THIS DRAWING. GLAZING SHALL HAVE A MAXIMUM HEIGHT OF 6.70' AND A MAXIMUM LENGTH OF 24.00'. GLAZING IS NOT IMPACT RESISTANT AND DOES NOT MEET THE REQUIREMENTS FOR WIND-BORNE DEBRIS REGIONS.

2. ALUMINUM FULL VIEW OPTION - ALUMINUM FULL VIEW SECTION MAY REPLACE ANY SECTION EXCEPT TOP AND BOTTOM PANELS. ALUMINUM FULL VIEW SECTION SHALL HAVE RAILS AND STILES OF EXTRUDED ALUMINUM ALLOY 6063-T6 WITH A 3-5/8" INTEGRAL FIN WITH .125" MINIMUM DSB GLAZING INSTALLED WITH ALUMINUM RETAINERS IN ORDER TO MEET UNIFORM STATIC DESIGN PRESSURES SHOWN ON THIS DRAWING. GLAZING IS NOT IMPACT RESISTANT AND DOES NOT MEET THE REQUIREMENTS FOR WIND-BORNE DEBRIS REGIONS.

3. MINIMUM OF 1" OVERLAP ON BOTH JAMBS REQUIRED TO MEET NEGATIVE DESIGN PRESSURES.

4. SLIDE LOCK OR OPERATOR REQUIRED.

5. SECTION STEEL TO HAVE THE FOLLOWING MINIMUM THICKNESS:  
 TS 150 - 30 GA EXTERIOR, 26 GA INTERIOR  
 TS 200 - 26 GA EXTERIOR, 26 GA INTERIOR  
 TS 200-20 - 20 GA EXTERIOR, 27 GA INTERIOR

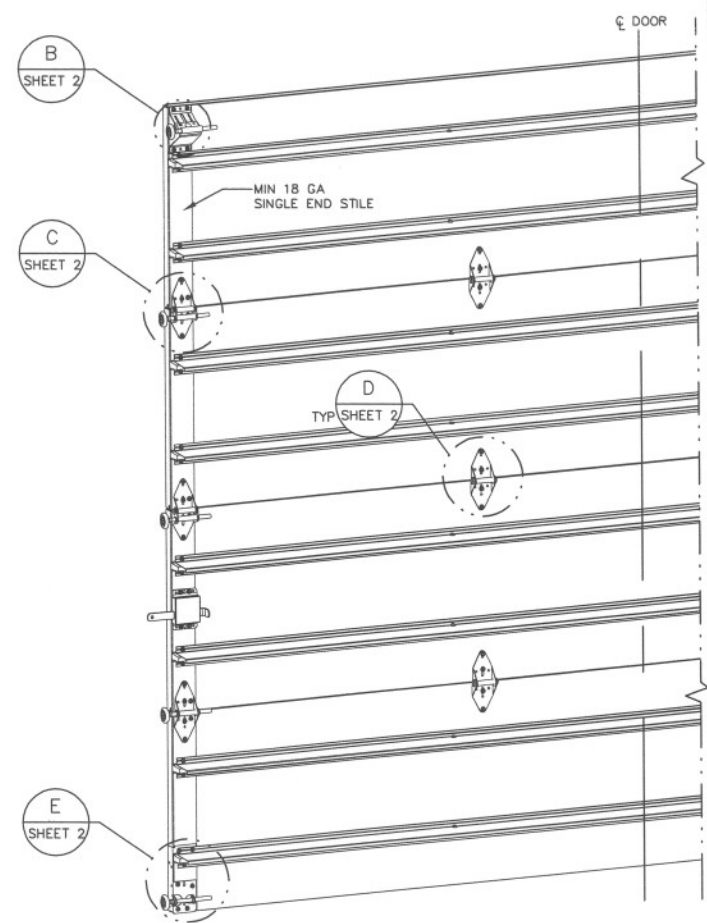
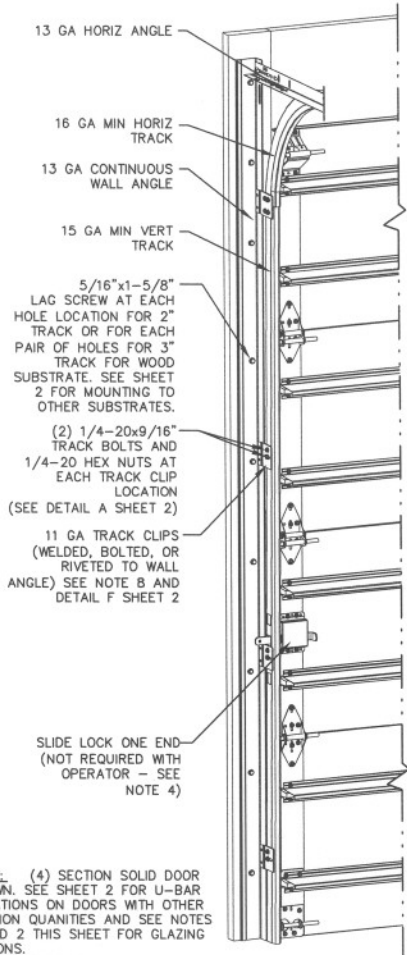
6. A 21 GA X 2-1/4" X 3-3/4" BACKUP PLATE SHALL BE LOCATED AT EACH INTERMEDIATE HINGE LOCATION.

7. THE DESIGN OF THE SUPPORTING STRUCTURAL ELEMENTS SHALL BE THE RESPONSIBILITY OF THE PROFESSIONAL OF RECORD FOR THE BUILDING OR STRUCTURE AND IN ACCORDANCE WITH CURRENT BUILDING CODES FOR THE LOADS LISTED ON THIS DRAWING.

8. TRACK CLIPS SHALL BE LOCATED WITH CENTERLINE OF BOTTOM CLIP SPACED 10" MAX FROM BOTTOM OF TRACK AND REMAINING TRACK CLIPS SPACED AT 24" O.C. MAX. SPACING BETWEEN TOP TRACK CLIP AND SPLICE PLATE SHALL BE 30" O.C. MAX.

9. WHEN MOUNTING TO WOOD, DOOR JAMB TO BE MINIMUM 2x6 NO. 2 SPF LUMBER OR BETTER. REFER TO JAMB CONNECTION SUPPLEMENT FOR ATTACHMENT TO SUPPORTING STRUCTURE.

NOTE: (4) SECTION SOLID DOOR SHOWN. SEE SHEET 2 FOR U-BAR LOCATIONS ON DOORS WITH OTHER SECTION QUANTITIES AND SEE NOTES 1 AND 2 THIS SHEET FOR GLAZING OPTIONS.



REVISIONS
P1 REMOVED SECTION LIMITATION FOR STANDARD GLAZING GRT 5/9/08

**SUPERIMPOSED DESIGN PRESSURE LOADS ON SUPPORTING STRUCTURE**

MAX DOOR WIDTH	DOOR HEIGHT	MAX UNIFORM LOAD EACH JAMB (PLF)
12'-2"	ALL	+172.8/-195.9

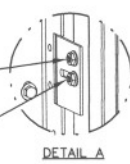
*MRB*  
 5/30/08  
 TX PE 93119  
 MARK R. BARROW, PE  
 FLORIDA LICENSE NO. 57389



3395 ADDISON DRIVE  
 PENSACOLA, FLORIDA 32514  
 (850) 474-9890

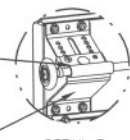
STATIC PRESSURE RATINGS		APPROVED SIZES		SCALE: N.T.S.		SIZE: A	
DESIGN (PSF):	+28.40/-32.20	MAX WIDTH:	12'-2"	DATE		NAME	
TEST (PSF):	+42.60/-48.30	MAX HEIGHT:	24'-1"	DRAWN	9/6/07	GRT	
IMPACT/CYCLIC RATED (YES/NO):	YES	MAX SECTION HEIGHT:	24"	CHECKED	4/11/08	MRB	
MODEL TS 150/200/200-20				SHEET 1 OF 2			
WINDLOAD SPECIFICATION OPTION CODE 2121				DRAWING PART NO.		REV.	
				332628		P1	

1/4" HOLE IS REQUIRED TO BE DRILLED THROUGH BOTH THE TRACK AND THE TRACK CLIP AT EACH TRACK CLIP LOCATION IN ORDER TO INSTALL SECOND  
 1/4-20x9/16" TRACK BOLT AND 1/4-20 HEX NUT.  
 1/4-20x9/16" TRACK BOLT AND 1/4-20 HEX NUT THROUGH THE SLOT IN THE TRACK AND TRACK CLIP.



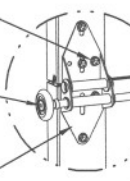
DETAIL A

13 GA ROLLER SLIDE ATTACHED TO BRACKET WITH 5/16-18 BOLT & NUT IN CENTER SLOT AND 1/4-20x9/16" TRACK BOLT & 1/4-20 HEX NUT THROUGH ANY TWO ALIGNING HOLES.



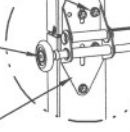
DETAIL B

13 GA COMMERCIAL 'A' FRAME TOP BRACKET ATTACHED WITH (4) 1/4-20x11/16" SELF DRILLING SCREWS.



DETAIL C

ADD (2) 1/4-20x11/16" SELF DRILLING SCREWS (INSIDE OF ALL END HINGES).



DETAIL D

2" STEEL ROLLER WITH 5-1/8" STEM



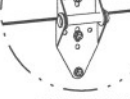
DETAIL E

14 GA WIDE BODY END HINGE ATTACHED WITH (4) 1/4-20x11/16" SELF DRILLING SCREWS



SOLID SECTION

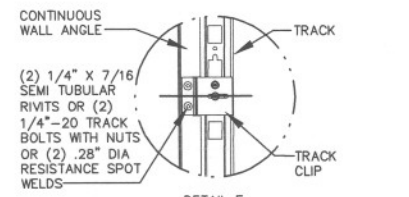
14 GA WIDE BODY HINGE ATTACHED WITH (4) 1/4-20x11/16" SELF DRILLING SCREWS



AFV SECTION

14 GA WIDE BODY HALF HINGE ATTACHED WITH (2) 1/4-20x11/16" SELF DRILLING SCREWS (UPPER HALF)  
 (2) 1/4x1/2" CARRIAGE BOLTS AND 1/4" FLANGE NUTS (LOWER HALF)

DETAIL D

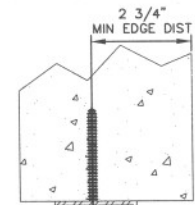


DETAIL F

CONTINUOUS WALL ANGLE  
 TRACK  
 TRACK CLIP  
 (2) 1/4" X 7/16" SEMI TUBULAR RIVETS OR (2) 1/4"-20 TRACK BOLTS WITH NUTS OR (2) .28" DIA RESISTANCE SPOT WELDS

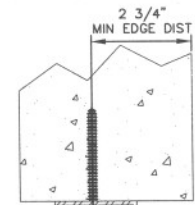
MIN 3/16" THICK STEEL FOR MOUNTING  
 MOUNTING WALL ANGLE  
 TRACK CLIP  
 1/4-20x9/16" TRACK BOLT AND 1/4-20 HEX NUT  
 TRACK

MOUNTING TO STEEL DETAIL



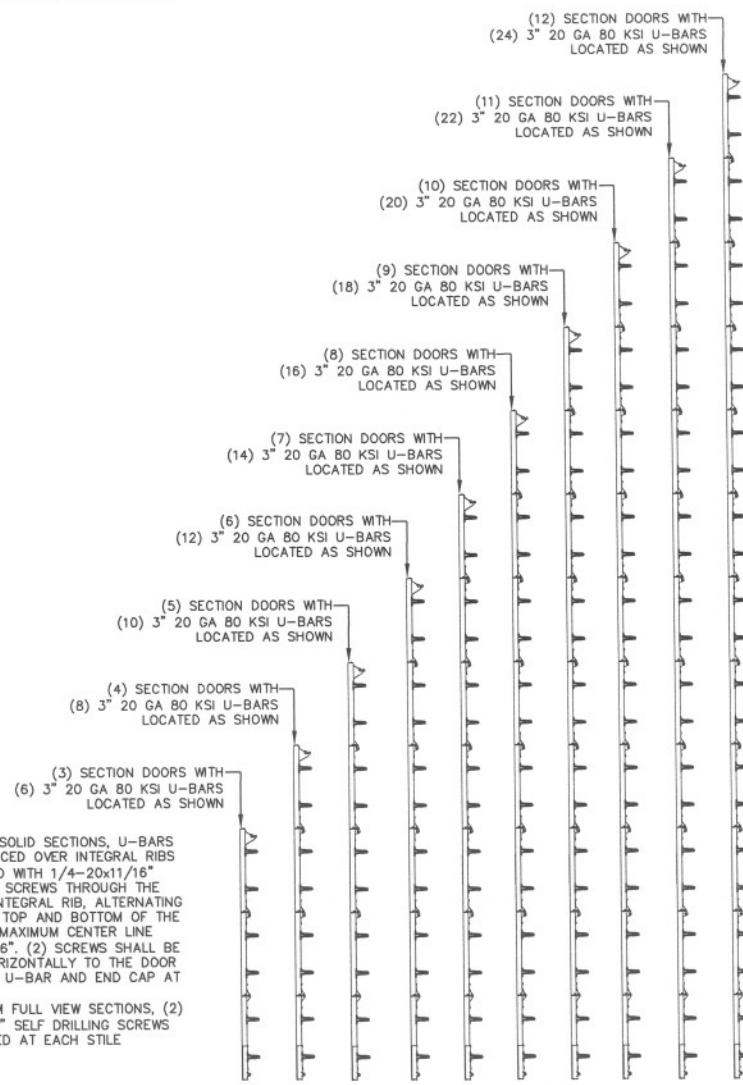
3/8" SIMPSON TITEN HD. 2-3/4" MIN EMBED INTO MIN 2000 PSI CONCRETE AT EACH HOLE OR PAIR OF HOLE LOCATION  
 MOUNTING WALL ANGLE  
 TRACK CLIP  
 (2) 1/4-20x9/16" TRACK BOLT AND 1/4-20 HEX NUT  
 TRACK

CONCRETE MOUNTING DETAIL



OPTIONAL: WALL ANGLE MAY BE ATTACHED TO SUPPORTING STEEL WITH MIN. (1) 1/4-20x7/8" SELF DRILLING SCREW WITH 1" O.D. WASHER AT EACH HOLE OR PAIR OF HOLE LOCATIONS IN LIEU OF WELDING

U-BAR LOCATIONS



NOTE: FOR SOLID SECTIONS, U-BARS SHALL BE PLACED OVER INTEGRAL RIBS AND ATTACHED WITH 1/4-20x11/16" SELF DRILLING SCREWS THROUGH THE U-BAR AND INTEGRAL RIB, ALTERNATING BETWEEN THE TOP AND BOTTOM OF THE U-BAR AT A MAXIMUM CENTER LINE SPACING OF 36". (2) SCREWS SHALL BE INSTALLED HORIZONTALLY TO THE DOOR THROUGH THE U-BAR AND END CAP AT EACH END.  
 FOR ALUMINUM FULL VIEW SECTIONS, (2) 1/4-20x11/16" SELF DRILLING SCREWS SHALL BE USED AT EACH STILE LOCATION.

REVISIONS

P1	REMOVED SECTION LIMITATION FOR STANDARD GLAZING
	GRT 5/9/08

*MRB*  
 5/30/08  
 TX PE 93119  
 MARK R. BARROW, PE  
 FLORIDA LICENSE NO. 57389

**Wayne Dalton**  
 3395 ADDISON DRIVE  
 PENSACOLA, FLORIDA 32514  
 (850) 474-9890

STATIC PRESSURE RATINGS		APPROVED SIZES		SCALE: N.T.S.		SIZE: A	
DESIGN (PSF):	+28.40/-32.20	MAX WIDTH:	12'-2"	DATE		NAME	
TEST (PSF):	+42.60/-48.30	MAX HEIGHT:	24'-1"	DRAWN	9/6/07	GRT	
IMPACT/CYCLIC RATED (YES/NO): YES		MAX SECTION HEIGHT: 24"	CHECKED	4/11/08	MRB		
MODEL TS 150/200/200-20				SHEET 2 OF 2			
WINDLOAD SPECIFICATION OPTION CODE 2121				DRAWING PART NO.		REV.	
				332628		P1	