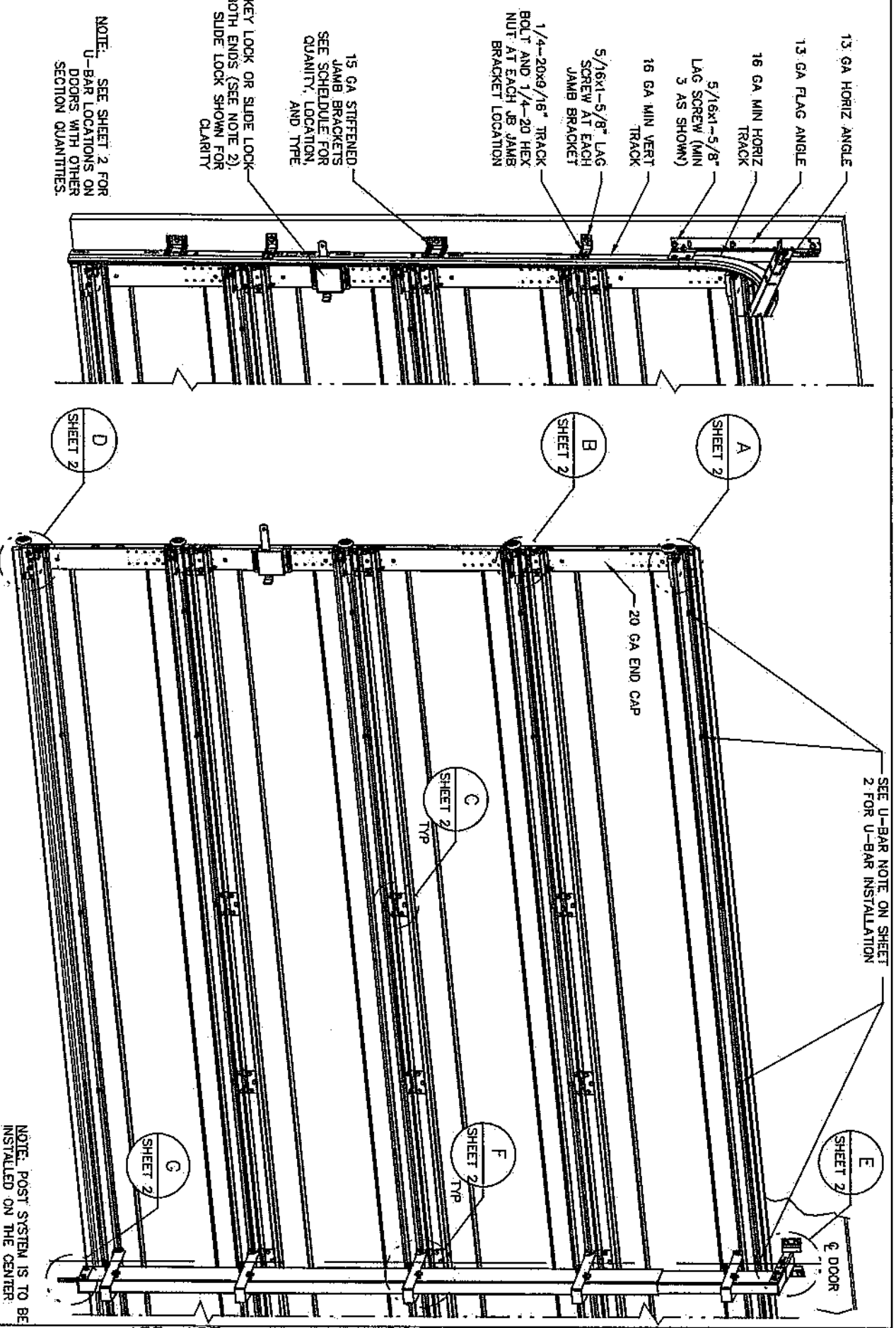


- NOTES:**
- NON-IMPACT RESISTANT GLAZING (DETAIL H) - .090" MINIMUM ANNEALED SSB GLAZING IN MOLDED FRAMES SCREWED TOGETHER WITH A MINIMUM OF (10) #8x1" SCREWS ((3) ALONG EACH HORIZONTAL LEG AND (2) ALONG EACH VERTICAL LEG) INSTALLED IN TOP OR INTERMEDIATE SECTION (WITH OR WITHOUT DECORATIVE INSERTS) MEETS UNIFORM STATIC DESIGN PRESSURES SHOWN ON THIS DRAWING. GLAZING SHALL HAVE A MAXIMUM HEIGHT OF 13.75" AND A MAXIMUM LENGTH OF 39". GLAZING IS NOT IMPACT RESISTANT AND DOES NOT MEET THE REQUIREMENTS FOR WIND-BORNE DEBRIS REGIONS. GLAZED SECTION REQUIRES 18 GA U-STRUT SCREWED TO LOWER INTEGRAL RIB OF SECTION AND OPERATOR STILE TO BE FACTORY INSTALLED. INSTALLER SHALL FIELD INSTALL (1) 1/4"-14x7/8" SELF DRILLING CRIMPITE SCREW TO ATTACH THE U-STRUT TO THE INTEGRAL RIB AND OPERATOR STILE AT THE CENTERLINE OF THE DOOR PER DETAIL F ON SHEET 2.
  - VNL OR WOOD DOOR STOP NAILED A MAXIMUM OF 6" O.C. MUST OVERLAP TOP AND BOTH ENDS OF PANELS MINIMUM 7/16" TO MEET NEGATIVE PRESSURES.
  - KEY LOCK OR SLIDE LOCKS REQUIRED.
  - SECTION SHALL BE CONSTRUCTED WITH FOAMED IN PLACE POLYURETHANE FOAM INSULATION CHEMICALLY BONDED TO 30 GA. MINIMUM FAGER STEEL AND A POLYAMINATE OR 32 GA STEEL BACKER. END CAP TO HAVE A MINIMUM 1.4" DEPTH.
  - THE DESIGN OF THE SUPPORTING STRUCTURAL ELEMENTS SHALL BE THE RESPONSIBILITY OF THE PROFESSIONAL OF RECORD FOR THE BUILDING OR STRUCTURE AND IN ACCORDANCE WITH CURRENT BUILDING CODES FOR THE LOADS LISTED ON THIS DRAWING.
  - DOOR JAMB TO BE MINIMUM 2x6 STRUCTURAL GRADE LUMBER. REFER TO JAMB CONNECTION SUPPLEMENT FOR ATTACHMENT TO SUPPORTING STRUCTURE.
  - LOUVER OPTION (DETAIL I) - .08" MINIMUM LOUVERS IN MOLDED FRAMES, 19"x13.9" (OLO=IS 1/2"x 10 1/2"), SCREWED TOGETHER WITH A MINIMUM OF (12) #8x1" SCREWS ((3) ALONG EACH HORIZONTAL LEG AND (3) ALONG EACH VERTICAL LEG). LOUVERS ARE NOT IMPACT RESISTANT AND DO NOT MEET THE REQUIREMENTS FOR WIND-BORNE DEBRIS REGIONS. LOUVERS ARE ONLY INSTALLED IN THE BOTTOM SECTION. LOUVERED SECTION REQUIRES OPERATOR STILE TO BE FACTORY INSTALLED AT THE CENTERLINE OF THE DOOR.



**JAMB BRACKET SCHEDULE**

DOOR HEIGHT	NO. OF SECTIONS (EACH JAMB)	NO. OF JAMB BRACKETS (EACH JAMB)	TRACK TYPE	LOCATION OF CENTERLINE OF JAMB BRACKETS MEASURED FROM BOTTOM OF TRACK (ALL DIMENSIONS ± 2")
7'-0"	4	4	Q1	13" (Q1), 25-1/2" (JB), 45-1/4" (Q1), 63" (JB)
7'-0"	4	4	FAT	10" (JB), 21-3/4" (JB), 42" (JB), 63-1/4" (JB)
8'-0"	4 OR 5	5	Q1	13" (Q1), 23" (JB), 34" (JB), 47-1/4" (Q1), 67" (Q1)
8'-0"	4 OR 5	5	FAT	10" (JB), 21-3/4" (JB), 29-3/4" (JB), 48" (JB), 66" (JB)

NOTE: SEE NOTE BELOW

NOTE: (JB) FOLLOWING DIMENSION DENOTES SLOTTED JAMB BRACKET ATTACHED TO TRACK WITH 1/4-20x9/16" TRACK BOLT AND NUT. (Q1) FOLLOWING DIMENSION DENOTES QUICK INSTALL JAMB BRACKET INSTALLED IN BUTTERFLY SLOT. NO ADDITIONAL HARDWARE NEEDED TO ATTACH TO TRACK. ALL DOORS WITH HIGH LIFT AND/OR ROOF PITCH REQUIRE USE OF CONTINUOUS WALL ANGLE. SEE SUPPLEMENT TRACK CHART FOR DETAILS.

**SUPERIMPOSED DESIGN PRESSURE LOADS ON SUPPORTING STRUCTURE**

MAX DOOR WIDTH	MAX DOOR HEIGHT	UNIFORM LOAD EACH JAMB (PLF)	POINT LOAD AT HEADER AND SLAB AT EACH POST LOCATION (LBS)
18'-0"	7'-0"	+126.1/-167.3	+1237.5/-1381.9
18'-0"	8'-0"	+126.1/-167.3	+1406.3/-1570.3



Junfeng Qian  
4/30/2021  
JUNFENG QIAN  
5729 ALPHEA AVE  
MCKINNEY, TEXAS 75070  
TEXAS PE 130813  
PROFESSIONAL ENGINEER'S SEAL PROVIDED ONLY FOR VERIFICATION OF WINDLOAD CONSTRUCTION DETAILS.

**Wayne Dalton**  
GARAGE DOORS  
A DIVISION OF OVERHEAD DOOR CORP.  
3395 ADDISON DRIVE  
PENSACOLA, FLORIDA 32514  
(850) 474-9890

STATIC PRESSURE RATINGS	APPROVED SIZES	SCALE: N.T.S.	SIZE: A
DESIGN (PSF): +30.00/-33.50	MAX WIDTH: 18'-0"		
TEST (PSF): +45.00/-50.25	MAX HEIGHT: 8'-0"		
IMPACT/CYCLIC RATED (YES/NO): NO	MAX SECTION HEIGHT: 24" (CHECKED)		
MODELS 5120/5145/9100/9405/9600			
WINDLOAD SPECIFICATION OPTION CODE 0606			
	SHEET 1 OF 3		
	DRAWING PART NO. 319032		
	REV. J		

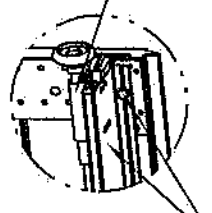
- REVISIONS**
- P1 REVISED SUPERIMPOSED DESIGN PRESSURE LOADS ON SUPPORTING STRUCTURE MRB 5/10/06
  - P2 ADDED MODEL 6100. MODIFIED NOTE 7 TO STATE THAT LOUVERS ARE NOT IMPACT RESISTANT. GRT 6/6/07
  - P3 MODIFIED JAMB BRACKET SCHEDULE FOR FAT OPTION. ADDED ULR TRACK. DETAIL SHEET 2. GRT 4/17/08
  - P4 ADDED CONCRETE DETAIL SHEET 2. ADDED TEXAS LICENSE NUMBER TO TITLE BLOCK. CHANGED LOUVER NOTE. ADDED HIGH LIFT AND ROOF PITCH TRACK NOTE. GRT 4/29/09
  - P5 ADDED GLAZING OPTION. GRT 2/11/10
  - P6 UPDATED TITLE BLOCK. GRT 5/4/10
  - P7 E831223 CHANGED DOOR MODEL NUMBERS, AND BACKER NOTES. ESC 6/7/2017
  - REV G - UPDATED REVISION FROM NUMERIC TO ALPHA. TLC 092820
  - REV H - DRAWING UPDATES FOR TDI. TLC 3/23/21
  - REV J - DRAWING UPDATES FOR TDI. TLC 4/20/21

NOTE: POST SYSTEM IS TO BE INSTALLED ON THE CENTER LINE OF THE DOOR. SEE WINDLOAD POST INSTALLATION INSTRUCTIONS.

COMPLIES WITH THE REQUIREMENTS OF IBC/IRC 2018

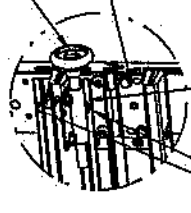
REVISIONS:

13 GA ADJUSTABLE TOP FIXTURE ATTACHED TO PRE-PUNCHED HOLES IN BOTTOM OF U-BAR WITH (2) 1/4-14x5/8 CRIMPITE SCREWS



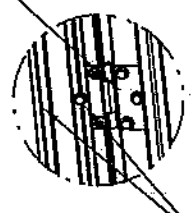
DETAIL A

13 GA ROLLER SLIDE ATTACHED TO PRE-PUNCHED HOLES IN TOP OF U-BAR WITH (2) 1/4-14x5/8 CRIMPITE SCREWS. USE VIEWING HOLE IN SLIDE TO ENSURE PROPER ALIGNMENT OF ROLLERS



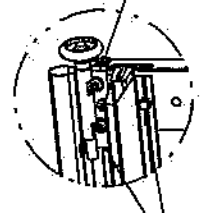
DETAIL B

15 GA HINGE ATTACHED WITH (4) 1/4-14x5/8 CRIMPITE SCREWS (2 OF WHICH ARE FACTORY ATTACHED). 3 OF WHICH ARE FIELD INSTALLED INTO TOP LEAF, AND 1 OF WHICH IS FIELD INSTALLED THRU PRE-PUNCHED HOLE IN U-BAR



DETAIL C

12 GA BOTTOM BRACKET FACTORY ATTACHED WITH (3) 1/4-14x5/8 CRIMPITE SCREWS

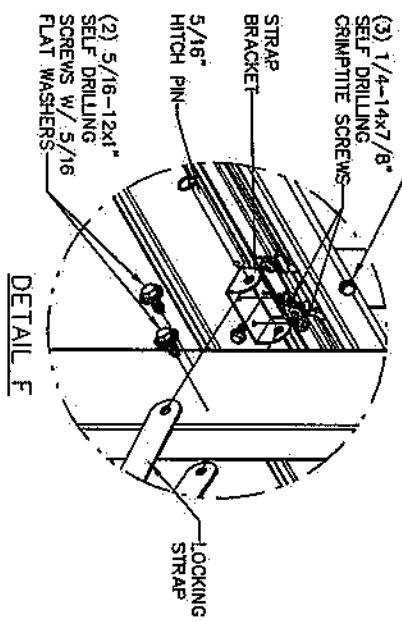


DETAIL D

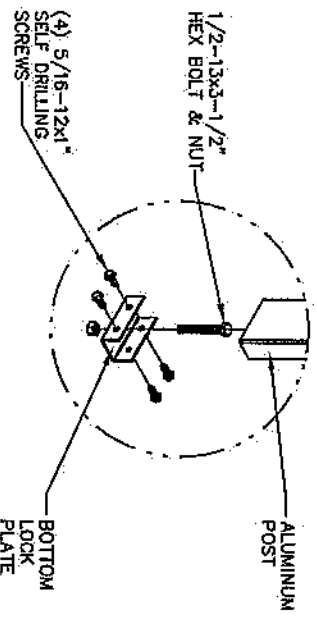
PLACE U-BAR OVER INTEGRAL RIB WITH THE (8) PRE-PUNCHED HOLES EACH END FACING UPWARD AND ATTACH THRU END CAP AT EACH END WITH (2) 1/4-14x7/8" SELF DRILLING CRIMPITE SCREWS FOR STANDARD TRACK AND (3) 1/4-14x7/8" SELF DRILLING CRIMPITE SCREWS FOR LOW HEADROOM TRACK (2 OF WHICH ARE USED TO ATTACHED THE TOP BRACKET AS SHOWN).

LOW HEADROOM TRACK  
DETAIL A

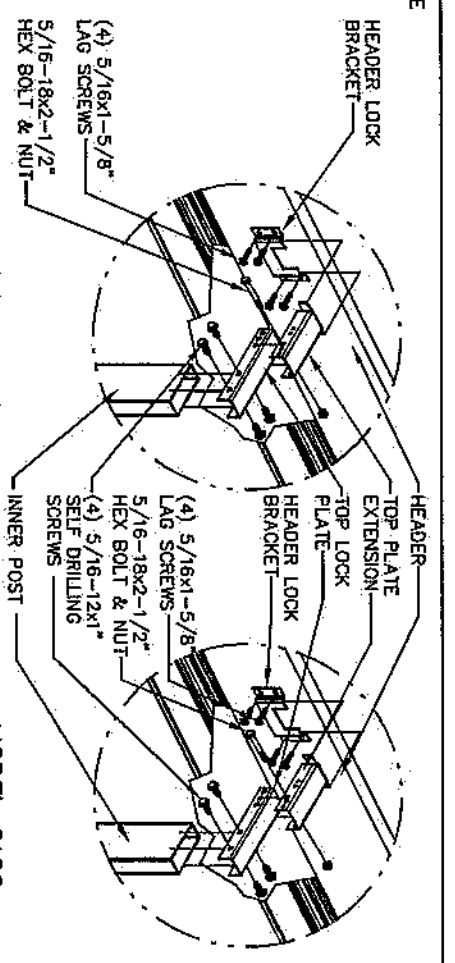
(1) 1/4-14x7/8" SELF DRILLING CRIMPITE SCREW AT CENTER LINE OF DOOR THRU J-STRIUT & OPERATOR BRACKET. NOTE: J-STRIUT & SCREW ONLY REQUIRED ON GLAZED SECTIONS. SEE NOTE 1 ON SHEET 1



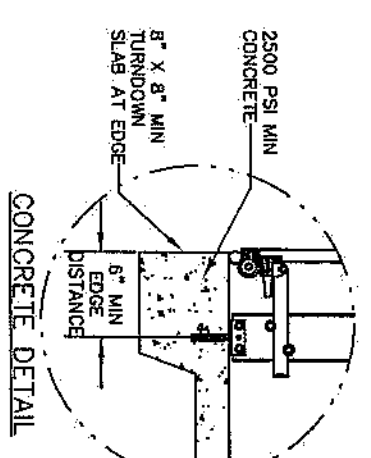
DETAIL E



DETAIL F



DETAIL G



CONCRETE DETAIL

U-BAR ATTACHMENT NOTES

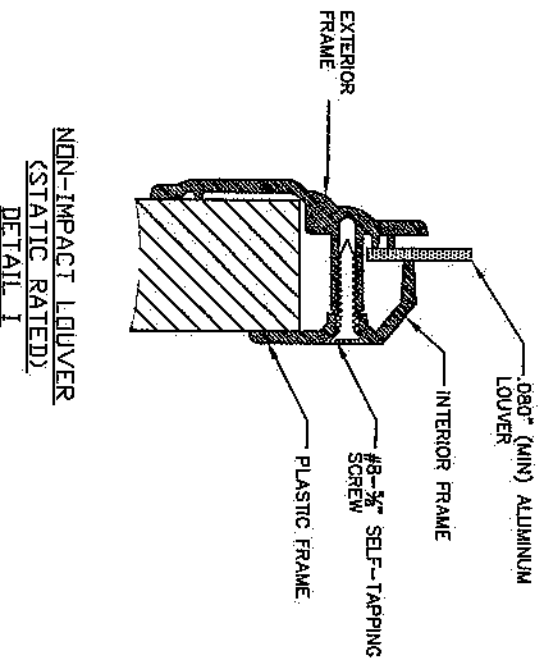
1. ALL U-BARS SHALL BE PLACED OVER INTEGRAL RIBS AND ATTACHED THRU PRE-PUNCHED HOLES WITH (2) 1/4-14x5/8 CRIMPITE SCREWS AT EACH INTERMEDIATE HINGE LOCATION, (2) 1/4-14x7/8" SELF DRILLING CRIMPITE SCREWS AT EACH END CAP (EXCEPT BOTH U-BARS ON BOTTOM SECTION - SEE DETAIL B AND D THIS SHEET), (2) 1/4-14x5/8" CRIMPITE SCREWS APPROXIMATELY MIDWAY BETWEEN END OF DOOR AND INTERMEDIATE HINGE LOCATION, AND (1) 1/4-14x5/8" CRIMPITE SCREW APPROXIMATELY 8" FROM EACH END. THERE SHALL BE A TOTAL OF (20) SCREWS ATTACHING EACH U-BAR EXCEPT BOTH U-BARS ON BOTTOM SECTION SHALL HAVE A TOTAL OF (18) SCREWS EACH.
2. WITH THE EXCEPTION OF THE (8) PRE-PUNCHED HOLES IN THE TOP OF EACH END USED FOR ATTACHMENT OF THE ROLLER SLIDES AND THE (6) PRE-PUNCHED HOLES IN THE BOTTOM OF EACH END USED FOR THE ATTACHMENT OF THE TOP FIXTURE AND UNLESS NOTED OTHERWISE ON THIS SPECIFICATION DRAWING, ALL PRE-PUNCHED HOLES IN ALL U-BARS SHALL BE ATTACHED TO THE DOOR WITH 1/4-14x5/8" CRIMPITE SCREWS.
3. 20 GA U-BARS SHALL BE STAMPED "34" APPROXIMATELY 8" FROM EACH END.



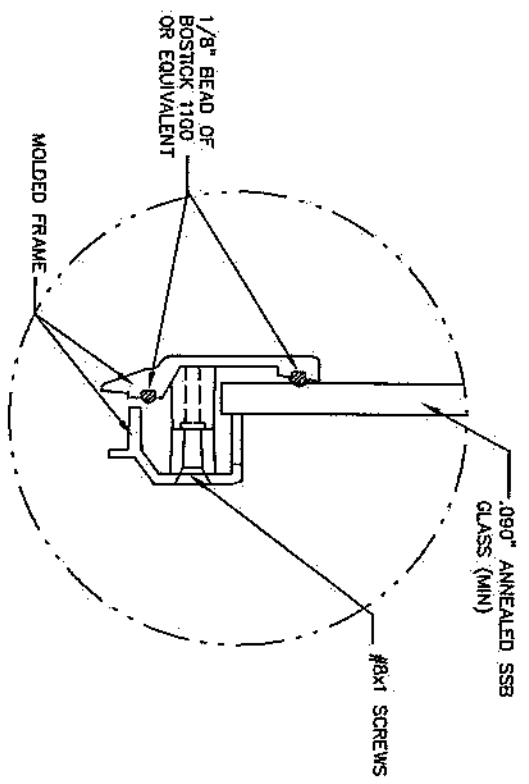
JUNFENG QIAN  
7228 AMPHORA AVE  
MCKINNEY, TEXAS 75070  
TEXAS PE 130813  
PROFESSIONAL ENGINEER  
APR 30 / 2021  
PROFESSIONAL ENGINEER'S SEAL PROVIDED ONLY FOR VERIFICATION OF WINDLOAD CONSTRUCTION DETAILS.

**Wayne Dalton**  
GARAGE DOORS  
A DIVISION OF OVERHEAD DOOR CORP  
1395 ADDISON DRIVE  
PENSACOLA, FLORIDA 32514  
(850) 474-9890

STATIC PRESSURE RATINGS	APPROVED SIZES	SCALE	N.T.S.	SIZE	A
DESIGN (PSF): +30.00/-33.50	MAX WIDTH: 18'-0"	DATE	3/3/06	NAME	GRT
TEST (PSF): +45.00/-50.25	MAX HEIGHT: 8'-0"	DRAWN	4/20/21	NAME	TLC
IMPACT/CYCLIC RATED (YES/NO): NO	MAX SECTION HEIGHT: 24" CHECKED	CHECKED			
MODELS 5120/5145/9100/9405/9600		SHEET 2 OF 3		DRAWING PART NO. 319032	
WINDLOAD SPECIFICATION OPTION CODE 0606		REV.		J	



NON-IMPACT LOUVER  
(STATIC RATED)  
DETAIL I



PLASTIC FRAME  
(STATIC RATED)  
DETAIL H



Junfeng Qian  
5/30/2021  
JUNFENG QIAN  
5728 MAPLEHURST AVE  
MCKINNEY, TEXAS 75070  
TEXAS PE 130813  
PROFESSIONAL ENGINEER'S SEAL PROVIDED ONLY FOR  
VERIFICATION OF WINDLOAD CONSTRUCTION DETAILS.

**Wayne Dalton**  
GARAGE DOORS  
A DIVISION OF OVERHEAD DOOR CORP.  
3395 ADDISON DRIVE  
PENSACOLA, FLORIDA 32514  
(850) 474-9880

STATIC PRESSURE RATINGS		APPROVED SIZES		SCALE: N.T.S.	
DESIGN (PSF):	+30.00/-33.50	MAX WIDTH:	18'-0"	DATE:	3/3/08
TEST (PSF):	+45.00/-50.25	MAX HEIGHT:	8'-0"	DRAWN:	GRT
IMPACT/CYCLIC RATED (YES/NO):	NO	MAX SECTION HEIGHT:	24"	CHECKED:	4/20/21
MODELS 5120/5145/9100/9405/9600		SHEET 3 OF 3		REV. J	
WINDLOAD SPECIFICATION OPTION CODE 0606				DRAWING PART NO. 319032	