

**NOTES:**

1. VINYL OR WOOD DOOR STOP  
NAILED A MAXIMUM OF 6" O.C. MUST  
OVERLAP TOP AND BOTH ENDS OF  
PANELS MINIMUM 7/16" TO MEET  
NEGATIVE PRESSURES.

2. SLIDE LOCK OR OPERATOR  
REQUIRED. LOW HEADROOM REQUIRES  
A LOCK ON THE LEFT AND RIGHT  
SIDE OF THE DOOR.

3. THE DESIGN OF THE SUPPORTING  
STRUCTURAL ELEMENTS SHALL BE  
THE RESPONSIBILITY OF THE  
PROFESSIONAL OF RECORD FOR THE  
BUILDING OR STRUCTURE AND IN  
ACCORDANCE WITH CURRENT  
BUILDING CODES FOR THE LOADS  
LISTED ON THIS DRAWING.

4. SECTION STEEL TO HAVE THE  
FOLLOWING MINIMUM THICKNESS:  
EXTERIOR - 27 GA  
INTERIOR - 30 GA

5. DOOR JAMB TO BE MINIMUM 2x6  
STRUCTURAL GRADE LUMBER AND BE  
SPRUCE, PINE, OR FIR. REFER TO  
JAMB CONNECTION SUPPLEMENT FOR  
ATTACHMENT TO SUPPORTING  
STRUCTURE.

6. FOR LOW HEAD ROOM LIFT  
CONDITIONS, TOP BRACKET SHALL BE  
A LHR TOP BRACKET IN LIEU OF  
THE BRACKET SHOWN ON THIS  
DRAWING. SEE LHR, DETAIL A, SHEET  
2.

7. 11 GA ROLLER SLIDES WITH  
WELDED ENDS AND 11 GA  
REINFORCING BRACKETS REQUIRED  
FOR DOORS > 8' TALL.

13 GA HORIZ ANGLE

13 GA FLAG ANGLE

5/16x1-5/8"  
LAG SCREW  
EACH HOLE

(4) 1/4-20x9/16"  
TRACK BOLTS & NUTS

15 GA MIN VERT  
TRACK

5/16x1-5/8" LAG  
SCREW AT EACH  
JAMB BRACKET

1/4-20x9/16" TRACK  
BOLT AND NUT AT EACH  
JAMB BRACKET

SECURE LOCK STRIKER PLATE  
(ONLY REQUIRED WITH SLIDE  
LOCK) ATTACHED TO TRACK  
WITH (2) 1/4-20x9/16" TRACK  
BOLTS AND NUTS

SLIDE LOCK EACH END  
(NOT REQUIRED WITH  
OPERATOR - SEE NOTE 2)

15 GA JB-1 JAMB  
BRACKETS. SEE  
SCHEDULE FOR  
QUANTITY AND  
LOCATION.

NOTE: (3) SECTION DOOR SHOWN.  
SEE PAGE 2 FOR U-BAR LOCATIONS  
FOR DIFFERENT SECTIONED DOORS.

**JAMB BRACKET SCHEDULE**

DOOR HEIGHT	NO. OF SECTIONS	NO. OF JAMB BRACKETS (EACH JAMB)	LOCATION OF CENTERLINE OF JAMB BRACKETS MEASURED FROM BOTTOM OF TRACK (ALL DIMENSIONS ± 2")
7'-0"	3	6	2", 10", 26", 42", 53", 63"
8'-0"	4	8	2", 10", 26", 39", 48", 57", 66", 75"
> 8'-0"			SEE NOTE BELOW

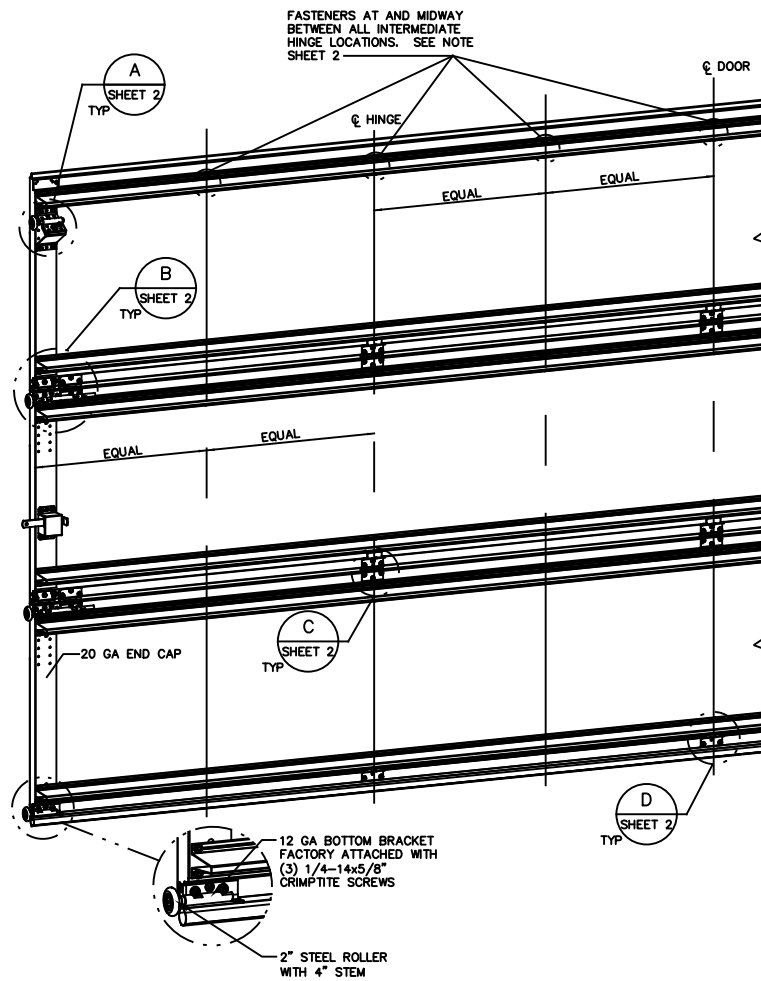
NOTE:  
ALL DOORS GREATER THAN 8' IN HEIGHT REQUIRE USE OF CONTINUOUS WALL ANGLE. SEE SUPPLEMENT TRACK CHART FOR DETAILS.

**SUPERIMPOSED DESIGN PRESSURE LOADS ON SUPPORTING STRUCTURE**

DOOR WIDTH	DOOR HEIGHT	UNIFORM LOAD EACH JAMB (PLF)
18'-0"	7'-0"	+166.5/-186.3
	8'-0"	+166.5/-186.3

JOHN E. SCATES, PE  
2560 KING ARTHUR #124-54  
LEWISVILLE, TX 75056  
FL PE 51737 TX PE 56308/F-2203

PROFESSIONAL ENGINEER'S SEAL PROVIDED ONLY FOR VERIFICATION OF WINDLOAD CONSTRUCTION DETAILS.



**REVISIONS**

P3 CHANGES MADE PER ETC LABORATORIES TESTING AND CHANGES TO GENERAL FORMAT 1/17/06 GRT

P4 UPDATED TITLE BLOCK 4/15/13 GRT

P5 UPDATED DUE TO TESTING AND CHANGES TO GENERAL FORMAT 8-22-16 GAC

F UPDATED PER PCR32744. UPDATED REV LEVELS TO ALPHABETICAL 12/8/21 SW

COMPLIES WITH IBC/IRC 2018

This door has been tested per ANSI/DASMA 108



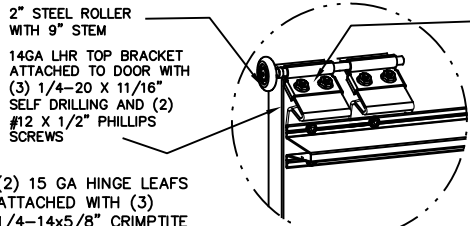
A DIVISION OF OVERHEAD DOOR CORP  
3395 ADDISON DRIVE  
PENSACOLA, FLORIDA 32514  
(850) 474-9890

STATIC PRESSURE RATINGS		APPROVED SIZES		SCALE: N.T.S.		SIZE: A
DESIGN (PSF):	+18.50/-20.70	MAX WIDTH:	18'-0"	DATE	1/17/06	GRT
IMPACT/CYCLIC RATED (YES/NO): NO		MAX HEIGHT:	14'-0"	DRAWN	2/10/06	MRB
		MAX SECTION HEIGHT:	28"	CHECKED		
MODELS 9700/9510				SHEET 1 OF 2		
WINDLOAD SPECIFICATION OPTION CODE 0526				DRAWING PART NO.	313641	REV. F

LOW HEADROOM TRACK

STANDARD LIFT TRACK

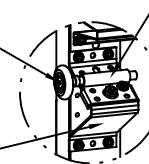
REVISIONS



13 GA ROLLER SLIDE ATTACHED TO BRACKET WITH 5/16-18 BOLT & NUT IN CENTER SLOT AND 1/4-20x9/16" TRACK BOLT & NUT THROUGH ANY TWO ALIGNING HOLES

2" STEEL ROLLER WITH 4" STEM

13 GA COMMERCIAL "A" FRAME TOP BRACKET ATTACHED WITH (4) 1/4-20x7/8" SELF DRILLING SCREWS



13 GA ROLLER SLIDE ATTACHED TO BRACKET WITH 5/16-18 BOLT & NUT IN CENTER SLOT AND 1/4-20x9/16" TRACK BOLT & NUT THROUGH ANY TWO ALIGNING HOLES

U-BAR LOCATIONS (7) SECTION DOORS WITH (14) 3" 20 GA 80 KSI U-BARS LOCATED AS SHOWN (TOP BRACKET REMOVED FOR CLARITY)

(2) 15 GA HINGE LEAFS ATTACHED WITH (3) 1/4-14x5/8" CRIMPITTE SCREWS EACH

14 GA HINGE BASE FACTORY ATTACHED TO DOOR WITH (5) 1/4-14x5/8" CRIMPITTE SCREWS

2" STEEL ROLLER WITH 9" STEM  
13 GA ROLLER CARRIERS FACTORY ATTACHED TO HINGE BASE AND REINFORCING BRACKET. (EXCEPTION: NOTE #7)

13 GA REINFORCING BRACKET ATTACHED BENEATH HINGE BASE. (EXCEPTION: NOTE #7)

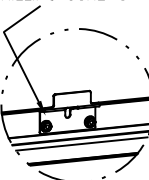
15 GA HINGE ATTACHED WITH (6) 1/4-14x5/8" CRIMPITTE SCREWS (3 OF WHICH ARE FACTORY ATTACHED)

BEFORE U-BAR INSTALLATION

DETAIL B

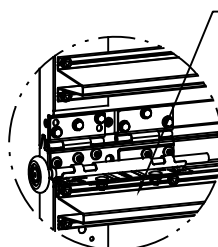
DETAIL C

15 GA HINGE BRACKET ATTACHED WITH (2) 1/4-20x7/8" SELF DRILLING SCREWS



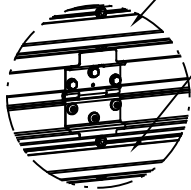
BEFORE U-BAR INSTALLATION

DETAIL A



AFTER U-BAR INSTALLATION

POSITION U-BAR OVER REINFORCING BRACKET AND ATTACH WITH (3) 1/4-20x7/8" SELF DRILLING SCREWS AS SHOWN (2 OF WHICH ATTACH THROUGH REINFORCING BRACKET)



AFTER U-BAR INSTALLATION

POSITION U-BAR ADJACENT TO HINGE LEAF AND ATTACH WITH (2) 1/4-14x5/8" CRIMPITTE SCREWS AS SHOWN

POSITION U-BAR OVER HINGE LEAF AND ATTACH WITH (1) 1/4-14x5/8" CRIMPITTE SCREW AND (1) 1/4-20x7/8" SELF DRILLING SCREW AS SHOWN (SELF DRILLING SCREW ATTACHES THROUGH HINGE LEAF)

POSITION U-BAR OVER HINGE BRACKET AND ATTACH WITH (1) 1/4-14x5/8" CRIMPITTE SCREW AND (1) 1/4-20x7/8" SELF DRILLING SCREW AS SHOWN (SELF DRILLING SCREW ATTACHES THROUGH HINGE BRACKET)



AFTER U-BAR INSTALLATION

DETAIL D

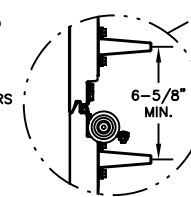
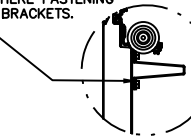
UNLESS NOTED OTHERWISE, ALL U-BARS SHALL BE ATTACHED WITH A MINIMUM OF (2) FASTENERS AT EACH END AND AT ALL INTERMEDIATE HINGE LOCATIONS (OR IN LINE WITH INTERMEDIATE HINGE LOCATIONS IF U-BAR IS NOT LOCATED AT A HINGE). ALL FASTENERS USED TO ATTACH U-BARS SHALL BE 1/4-14x5/8" CRIMPITTE SCREWS EXCEPT 1/4-20x7/8" SELF DRILLING SCREWS SHALL BE USED AT END CAPS AND WHERE FASTENING THROUGH HINGE LEAFS OR BRACKETS.

(3) SECTION DOORS WITH (6) 3" 20 GA 80 KSI U-BARS LOCATED AS SHOWN (TOP BRACKET REMOVED FOR CLARITY)

(5) SECTION DOORS WITH (10) 3" 20 GA 80 KSI U-BARS LOCATED AS SHOWN (TOP BRACKET REMOVED FOR CLARITY)

(6) SECTION DOORS WITH (12) 3" 20 GA 80 KSI U-BARS LOCATED AS SHOWN (TOP BRACKET REMOVED FOR CLARITY)

NOTE: U-BARS SHOULD BE INSTALLED LEVEL ACROSS DOOR AND MAINTAIN A MINIMUM CENTERLINE SPACING OF 6-5/8" BETWEEN U-BARS ON ADJACENT SECTIONS



STATIC PRESSURE RATINGS		APPROVED SIZES		SCALE: N.T.S.		SIZE: A	
DESIGN (PSF):	+18.50/-20.70	MAX WIDTH:	18'-0"	DATE		NAME	
		MAX HEIGHT:	14'-0"	DRAWN	1/17/06	GRT	
IMPACT/CYCLIC RATED (YES/NO):	NO	MAX SECTION HEIGHT:	28"	CHECKED	2/10/06	MRB	
MODELS 9700/9510						SHEET 2 OF 2	
WINDLOAD SPECIFICATION OPTION CODE 0526						DRAWING PART NO.	REV.
						313641	F