

Door Height	Section Quantity	Strut Quantity	Track Brackets Per Side
6'-0"	4	6	5
6'-3" to 7'-0"	4	7	5
7'-6" to 8'-0"	5	8	6
8'-3"	5	9	6
8'-6" to 8'-9"	5	9	7
9'-0"	6	9	7
9'-3" to 9'-9"	6	10	7
10'-0"	6	10	8
10'-3" to 10'-6"	6	11	8
10'-9" to 11'-0"	7	11	8
11'-3" to 12'-0"	7	12	9
12'-3"	7	13	9
12'-6"	8	13	9
12'-9" to 13'-0"	8	13	10
13'-3" to 14'-0"	8	14	10

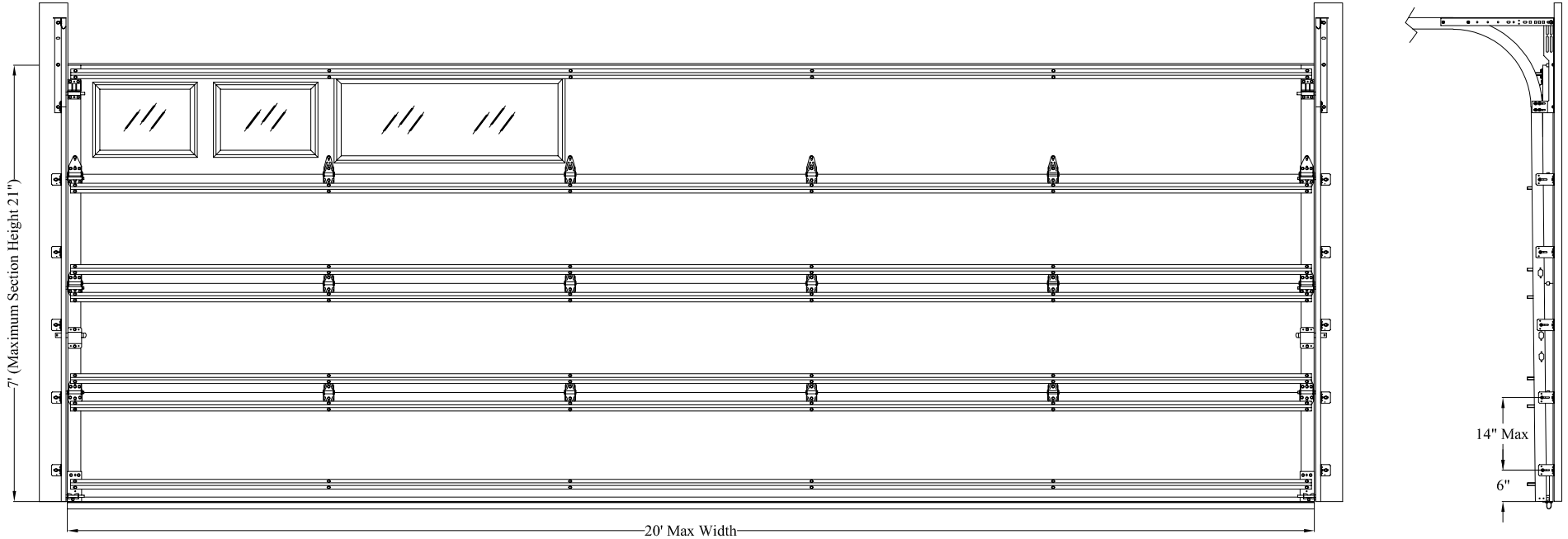
Note: Maximum door height is 14'. Consult Sheet 3 for Strut and Section Location Chart. Detail views shown on Sheet 2.

Model Numbers Available
3600 Series

REVISIONS			
REV	DESCRIPTION	DATE	APPROVED


John E. Scates, PE  
 2560 King Arthur Blvd. Ste 124-54  
 Lewisville, TX 75056  
 FL PE 51737  
 TX PE 56308 / F-2203

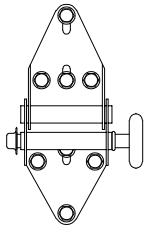
Printed copies of this document are not considered signed and sealed and the signature must be verified on any electronic copies. ]



**NOTE:**

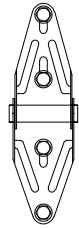
1. This product has been evaluated per ANSI/DASMA 108 and ASTM E330.
2. This product complies with the requirements of the 2018 IBC/IRC.
3. Doors with glazing not qualified for use in windborne debris regions.
4. This drawing provides windload assembly details for the claimed size and pressures.

<b>Max Size:</b> 20' x 14'  <b>Design Pressure:</b> +20.8/-23.2 PSF	 5700 NW 39th Street Riverside, MO 64150	<b>DESCRIPTION:</b> Wind Load Rated Residential Sandwich Sectional Garage Door 20' Wide 3600 Series Doors	
		<b>DRAWING NUMBER:</b> RS20A_20.8_23.2	<b>REV:</b> 00
<b>DRAWN BY:</b> DMK	<b>DATE DRAWN:</b> 7/11/22	<b>REV DATE:</b> 7/11/22	
<b>SIZE:</b> ANSI A	<b>SCALE:</b> NTS	<b>SHEET:</b> 1 of 3	



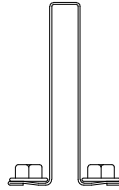
**End Hinge**

14 gauge galvanized steel end hinge attached with four 1/4" x 3/4" screws and four 1/4" x 5/8" self tapping screws.



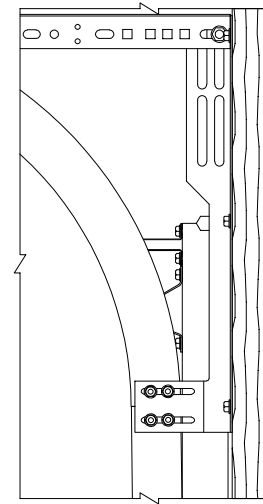
**Center Hinge**

18 gauge galvanized steel narrow or wide body hinge attached with four 1/4" x 3/4" screws.



**Struts**

3" x 1 7/8" 16 gauge 33 ksi hat strut attached with two 1/4" x 5/8" self-tapping screws per stile.



**Flag Bracket**

12 gauge galvanized steel flag bracket attached to wood jamb with three 5/16" x 1 5/8" wood lag screws and to the horizontal and vertical tracks with two 1/4" x 3/4" track bolts and nuts each.

**Horizontal Track and Angle**

Horizontal track and angle to suit with suitable back hang.

**Vertical Track**

2" galvanized steel track with a minimum thickness of .067".

**Strut Spacer**

1/8" spacer required between strut and top section only when 43" x 15" windows are used.

**Wood Jambs**

Vertical jambs are to be 2x6 #2 Spruce-Pine-Fir (S-P-F) or better. Refer to DASMA TDS 161 or a licensed design professional for jamb configurations. Note: Preparation of jambs by others, and supporting structural elements must be capable of withstanding the rated windload.

**Stop Molding**

Stop molding (attached with minimum 6D headed nails or screws) is required, or door must overlap jambs by 5/16".

**Roller**

Minimum 7 ball steel roller or 10 ball nylon roller with 4" stem and push nuts on all hinge rollers.

**End Cap**

20 gauge galvanized steel end cap attached with one sheet metal screw.

**Bottom Bracket**

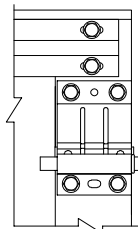
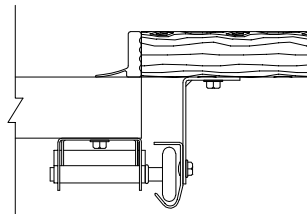
13 gauge galvanized steel bottom bracket attached with four 1/4" x 5/8" self-tapping screws (push nut not required on roller).

**Bottom Weatherstrip**

Aluminum extrusion with vinyl insert.

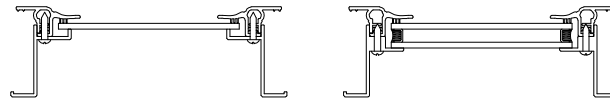
**Track Brackets**

2 1/4" wide x 12 gauge galvanized steel track bracket attached to wood jamb with one 5/16" x 1 5/8" wood lag screw and to vertical track with one 1/4" x 3/4" track bolt and nut. Note: Center distance between track brackets not to exceed 14".



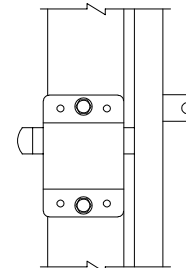
**Top Fixture**

16 gauge galvanized steel top fixture with two bolt roller carrier and attached to door with four 1/4" x 5/8" self-tapping screws (push nut not required on roller).



**Locking Mechanism**

Doors must have either an electronic operator or locking device installed (inside slide lock shown, other lock types permitted). Note: Extension spring doors require locking point on each side if no electronic operator is installed.



**Windows (optional)**

Windows available in sizes listed below. Frames are molded plastic.

Frame	Max Daylight Opening	Fastener Pattern	Glazing Types
Short	18" x 12-1/2"	#8-5/8" (12) total, (3) along each horizontal edge & (3) along each vertical edge	1/8" DSB Annealed, 1/8" DSB Tempered, 0.100" Polycarbonate, and 1/2" IG Consisting of Two Pieces of Annealed or Tempered Glass With 1/4" Spacer
Ranch	38" x 11-1/2"	#8-5/8" (14) total, (5) along each horizontal edge & (2) along each vertical edge	1/8" DSB Annealed, 1/8" DSB Tempered, 1/2" IG Consisting of Two Pieces of Annealed or Tempered Glass With 1/4" Spacer
Carriage/Ranch Carriage	43" x 15"	#8-5/8" (18) total, (6) along each horizontal edge & (3) along each vertical edge	1/8" DSB Annealed and 1/8" DSB Tempered

Max Size:  
20' x 14'

Design Pressure:  
+20.8/-23.2 PSF



5700 NW 39th Street  
Riverside, MO 64150

**DESCRIPTION:**

Wind Load Rated Residential Sandwich Sectional Garage Door  
20' Wide 3600 Series Doors


<b>DRAWING NUMBER:</b> RS20A_20.8_23.2		<b>REV:</b> 00	
<b>DRAWN BY:</b> DMK	<b>DATE DRAWN:</b> 7/11/22	<b>REV DATE:</b> 7/11/22	
<b>SIZE:</b> ANSI A	<b>SCALE:</b> NTS	<b>SHEET:</b> 2 of 3	

### Strut and Sections Location Chart

Door Height	Section Heights	Strut Locations	Track Brackets
6 - 0	18 18 18 18	3 15.5 33.5 38.5 51.5 70	5
6 - 3	21 18 18 18	3 18.5 23.5 36.5 41.5 54.5 73	5
6 - 6	21 18 18 21	3 18.5 23.5 36.5 41.5 54.5 76	5
6 - 9	21 21 18 21	3 18.5 23.5 39.5 44.5 57.5 79	5
7 - 0	21 21 21 21	3 18.5 23.5 39.5 44.5 60.5 82	5
7 - 6	18 18 18 18 18	3 15.5 33.5 38.5 51.5 56.5 69.5 88	6
7 - 9	21 18 18 18 18	3 18.5 36.5 41.5 54.5 59.5 72.5 91	6
8 - 0	21 18 18 18 21	3 18.5 36.5 41.5 54.5 59.5 72.5 94	6
8 - 3	21 21 18 18 21	3 18.5 23.5 39.5 44.5 57.5 62.5 75.5 97	6
8 - 6	21 21 18 21 21	3 18.5 23.5 39.5 44.5 57.5 62.5 78.5 100	7
8 - 9	21 21 21 21 21	3 18.5 23.5 39.5 44.5 60.5 65.5 81.5 103	7
9 - 0	18 18 18 18 18 18	3 15.5 33.5 38.5 51.5 69.5 74.5 87.5 106	7
9 - 3	21 18 18 18 18 18	3 18.5 36.5 41.5 54.5 59.5 72.5 77.5 90.5 109	7
9 - 6	21 21 18 18 18 18	3 18.5 39.5 44.5 57.5 62.5 75.5 80.5 93.5 112	7
9 - 9	21 21 21 18 18 18	3 18.5 39.5 44.5 60.5 65.5 78.5 83.5 96.5 115	7
10 - 0	21 21 21 21 18 18	3 18.5 39.5 44.5 60.5 65.5 81.5 86.5 99.5 118	8
10 - 3	21 21 21 21 21 18	3 18.5 23.5 39.5 44.5 60.5 65.5 81.5 86.5 102.5 121	8
10 - 6	21 21 21 21 21 21	3 18.5 23.5 39.5 44.5 60.5 65.5 72.5 86.5 102.5 124	8
10 - 9	21 18 18 18 18 18 18	3 18.5 36.5 41.5 54.5 59.5 72.5 90.5 95.5 108.5 127	8
11 - 0	21 21 18 18 18 18 18	3 18.5 39.5 44.5 57.5 62.5 75.5 93.5 98.5 111.5 130	8
11 - 3	21 21 21 18 18 18 18	3 18.5 39.5 44.5 60.5 65.5 78.5 83.5 96.5 101.5 114.5 133	9
11 - 6	21 21 21 21 18 18 18	3 18.5 39.5 44.5 60.5 65.5 81.5 86.5 99.5 104.5 117.5 136	9
11 - 9	21 21 21 21 21 18 18	3 18.5 39.5 44.5 60.5 65.5 81.5 86.5 102.5 107.5 120.5 139	9
12 - 0	21 21 21 21 21 21 18	3 18.5 39.5 44.5 60.5 65.5 81.5 86.5 102.5 107.5 123.5 142	9
12 - 3	21 21 21 21 21 21 21	3 18.5 23.5 39.5 44.5 60.5 65.5 81.5 86.5 102.5 107.5 123.5 145	9
12 - 6	21 21 18 18 18 18 18 18	3 18.5 39.5 44.5 57.5 62.5 75.5 93.5 98.5 111.5 116.5 129.5 148	9
12 - 9	21 21 21 18 18 18 18 18	3 18.5 39.5 44.5 60.5 65.5 78.5 96.5 101.5 114.5 119.5 132.5 151	10
13 - 0	21 21 21 21 18 18 18 18	3 18.5 39.5 44.5 60.5 65.5 81.5 99.5 104.5 117.5 122.5 135.5 154	10
13 - 3	21 21 21 21 21 18 18 18	3 18.5 39.5 44.5 60.5 65.5 81.5 86.5 102.5 107.5 120.5 125.5 138.5 157	10
13 - 6	21 21 21 21 21 21 18 18	3 18.5 39.5 44.5 60.5 65.5 81.5 86.5 102.5 107.5 123.5 128.5 141.5 160	10
13 - 9	21 21 21 21 21 21 21 18	3 18.5 39.5 44.5 60.5 65.5 81.5 86.5 102.5 107.5 123.5 128.5 144.5 163	10
14 - 0	21 21 21 21 21 21 21 21	3 18.5 39.5 44.5 60.5 65.5 81.5 86.5 102.5 107.5 123.5 128.5 144.5 166	10

**NOTE:**

- 5. Sequential section heights left to right as stacked from floor to ceiling.
- 6. Individual strut locations in inches from bottom of door.
- 7. Section stacking order may be changed to accommodate window section placement or other factors. Strut locations shall be adjusted accordingly.

<b>Max Size:</b> 20' x 14'  <b>Design Pressure:</b> +20.8/-23.2 PSF	 5700 NW 39th Street Riverside, MO 64150	<b>DESCRIPTION:</b> Wind Load Rated Residential Sandwich Sectional Garage Door 20' Wide 3600 Series Doors	
		<b>DRAWING NUMBER:</b> RS20A_20.8_23.2	<b>REV:</b> 00
<b>DRAWN BY:</b> DMK	<b>DATE DRAWN:</b> 7/11/22	<b>REV DATE:</b> 7/11/22	
<b>SIZE:</b> ANSI A	<b>SCALE:</b> NTS	<b>SHEET:</b> 3 of 3	