

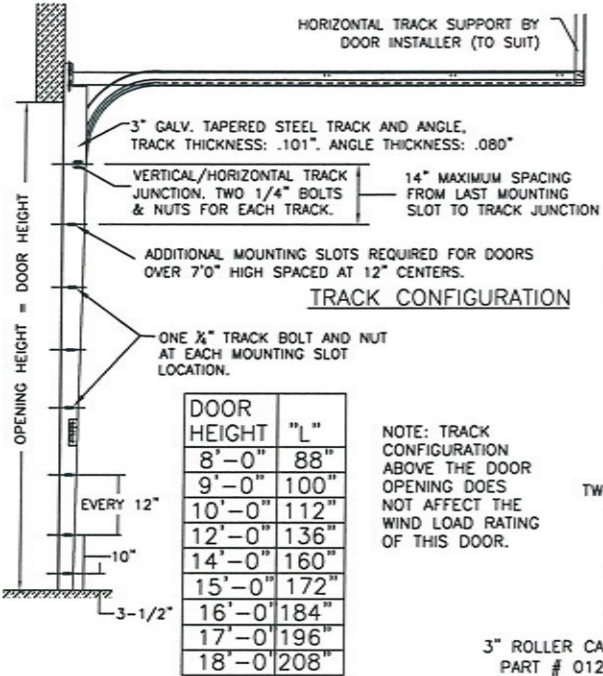
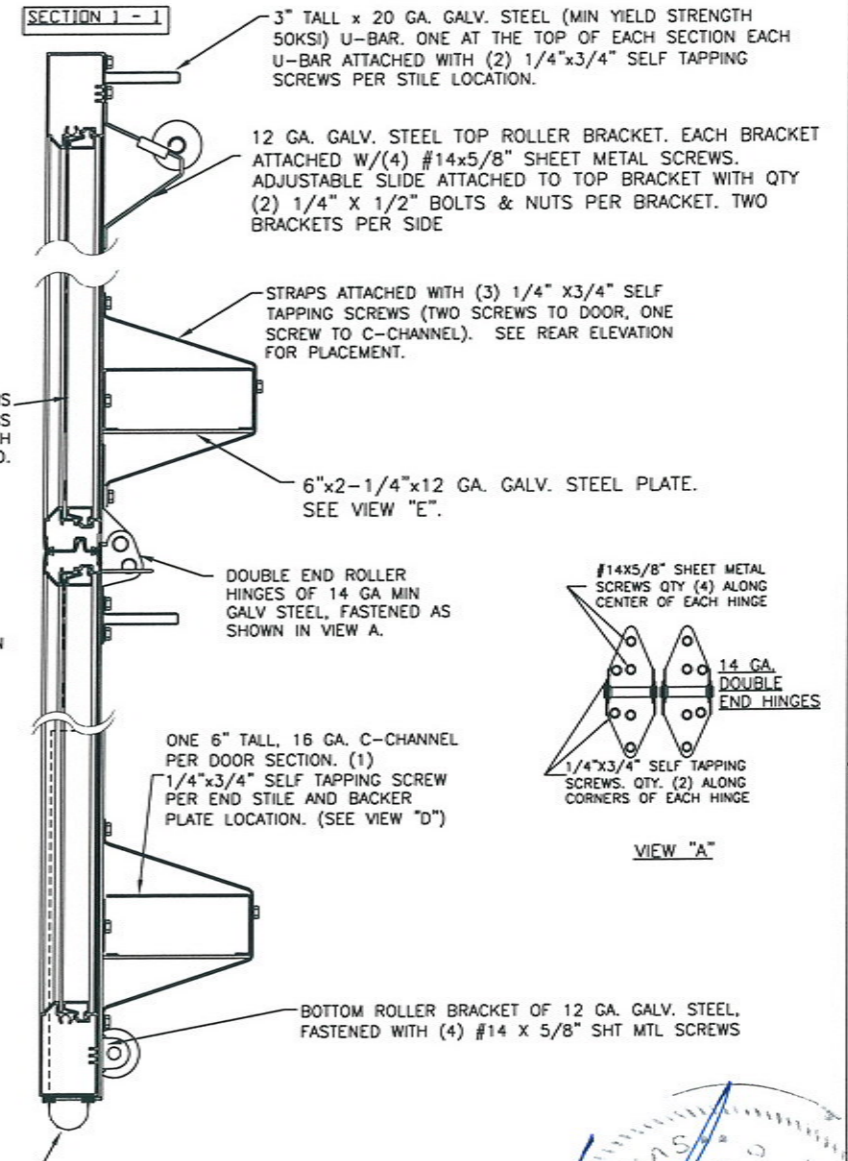
CLOPAY MODEL 902
IDEAL MODEL C2AL

UP TO 24'-2" WIDE X 18'-0" HIGH

REVISIONS					
REV. NO.	ZONE:	DATE:	ECN NO.	APPVD:	DESCRIPTION
06	-	08/2016	-	-	REMOVED WIND SPEED TABLE.

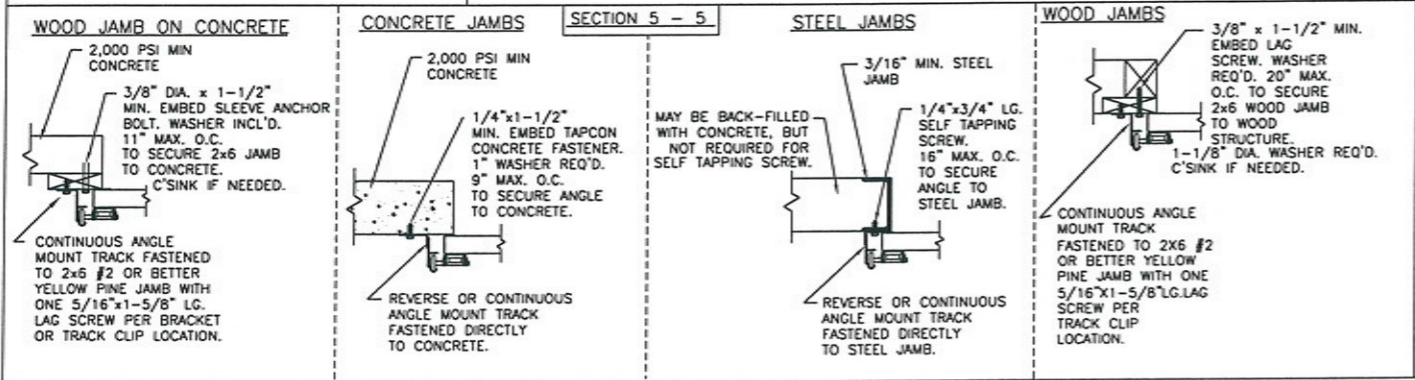
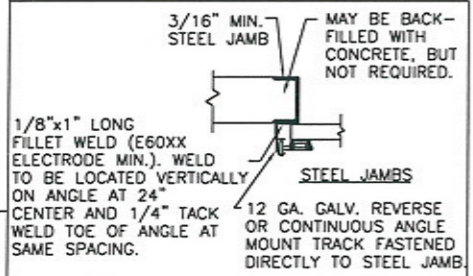
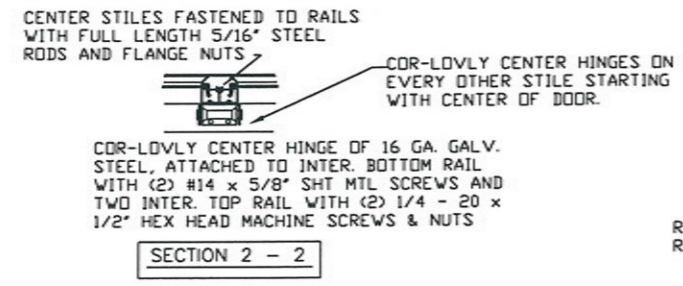
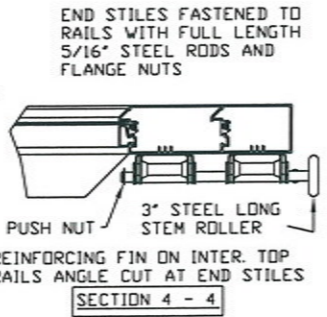
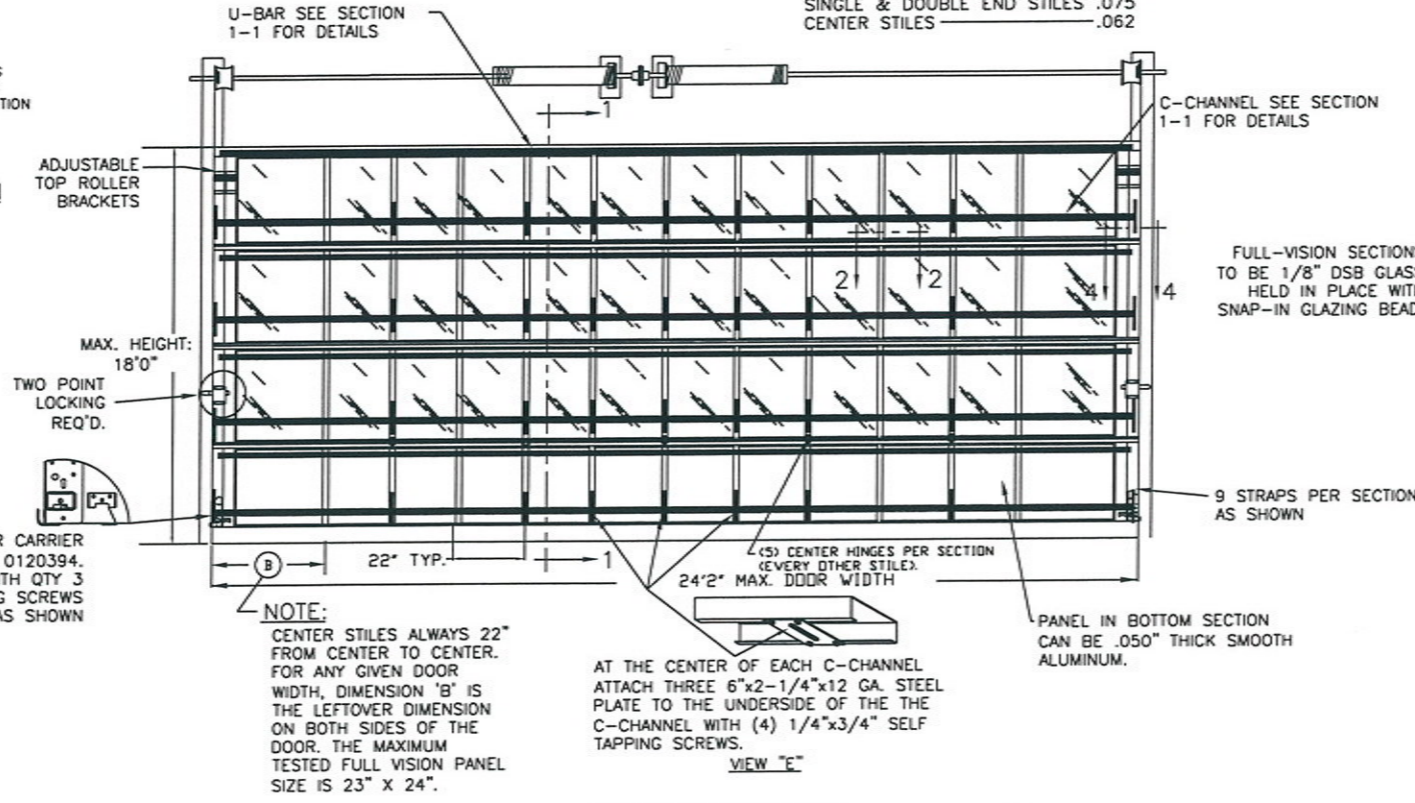
THE OPTIONAL GLAZING SHOWN ON THIS DRAWING MEETS THE WIND LOAD REQUIREMENTS OF THE FLORIDA BUILDING CODE OR INTERNATIONAL BUILDING CODE BUT DOES NOT MEET THE IMPACT RESISTANT REQUIREMENT FOR WINDBORNE DEBRIS REGIONS (FBC / IBC CHAPTER 16).

DOOR IS MADE OF 6063-T5 ALUMINUM EXTRUSIONS.
WALL THICKNESS:
TOP & BOTTOM RAILS .075
INTER. TOP & BOTTOM RAILS .075
TOP HAS .1 x 1.875" FIN
INTER. TOP RAIL CAP .040
SINGLE & DOUBLE END STILES .075
CENTER STILES .062



DOOR HEIGHT 'A'	NUMBER OF SECTIONS
UP TO 8'-0"	4
8'-3" THRU 10'-0"	5
10'-3" THRU 12'-0"	6
12'-3" THRU 14'-0"	7
14'-3" THRU 16'-0"	8
16'-3" THRU 18'-0"	9

MAX. SECTION HEIGHT: 24"



THE DESIGN OF THE SUPPORTING STRUCTURAL ELEMENTS IS THE RESPONSIBILITY OF THE BUILDING ENGINEER OR ARCHITECT OF RECORD.

DESIGN ENGINEER: MARK WESTERFIELD, P.E. FLORIDA P.E. #48495, NC P.E. #23832, TEXAS P.E. #91513

DESIGN LOADS: +25 & -25 P.S.F. TEST LOADS +37.5 & -37.5 P.S.F.

Mark Westerfield
8/12/16

MARK WESTERFIELD
1513
REGISTERED PROFESSIONAL ENGINEER
STATE OF TEXAS

Unless Stated Otherwise TOLERANCES are

.0	± .031
.00	± .015
.000	± .005
.0000	± .001
Degrees	± 1/2'

Unless Stated Otherwise DIMENSIONS ARE IN INCHES.

Glopay Building Products Company
8585 Duke Boulevard
Mason, OH 45040 USA
Tel. No. 513-770-4800
Fax No. 513-770-4853

MANUFACTURING PRODUCT CODE:
MPC: C-AL-1F499

CLOPAY WINDLOAD RATING
W4

DESCRIPTION: M/N 902, C2AL, 24'-2" WIDE	DES. +25/-25 PSF
DRAWN BY: BFA	DATE: 11/30/04
CHECKED BY: -	DATE: -
DWG. NO.: 103332	VER: TD1
SCALE: NONE	DWG. SIZE B
SHEET 1 OF 1	

