

4

3

2

1

STANDARD-LIFT TRACK DETAILS

MAX 14'-2" WIDE X 18'-0" HIGH

MODELS AVAILABLE (CLOPAY/ HOLMES/ IDEAL)
MODELS 524W8, 520W8, 224W8, C4STW8, COSTW8

NOTE: DOUBLE TRACK HEADROOM, HI-LIFT TRACK, FOLLOW-THE-ROOF TRACK, AND VERTICAL LIFT TRACK ARE AVAILABLE OPTIONS. 3" TRACK ALSO AVAILABLE.

HORIZONTAL TRACK END HANGER BRACKET SUPPLIED BY DOOR INSTALLER

GALV STEEL TRACK SECTIONS - HORIZONTAL - 14 GA MIN.

1" OVERLAP (EACH SIDE)

OPTIONAL STOP MOULDING BY DOOR INSTALLER (TO SUIT).

14" MAXIMUM SPACING FROM LAST MOUNTING SLOT TO TRACK JUNCTION

GALVANIZED STEEL TRACK SECTIONS VERTICAL - 0.083 MIN

VERTICAL TRACK TO BE CONTINUOUS ANGLE OR REVERSE ANGLE TRACK, 1-3/4"x2-1/4"x12 GA MIN. ALL TRACK CLIPS ARE 2-1/2" x 12 GA. GALV. STEEL CLIPS AND ARE ATTACHED TO TRACK WITH EITHER TWO 1/4" RIVETS OR ONE 1/4" BOLT AND NUT.

SOUTHERN YELLOW PINE JAMB BY OTHERS
ONE 5/16" x 1-5/8" LAG SCREW SPACED AT THE SAME DISTANCES AS THE TRACK BOLTS (I.E. 3-1/2", 10", AND EVERY 12" ALSO TWO LAG SCREWS LOCATED ABOVE VERTICAL/HORIZONTAL TRACK JUNCTION.

16 GA. MIN. GALV. STEEL END STILE FASTENED TO DOOR SKIN WITH TDG-L-LDC SYSTEM AT TOP, BOTTOM AND CENTER.

18 GA. MIN. GALV. STEEL INTERMEDIATE STILE FASTENED TO DOOR SKIN WITH TDG-L-LDC SYSTEM AT TOP, BOTTOM AND EACH MAJOR RIB.

14 GA. GALV. STEEL INTERMEDIATE HINGE. (SEE VIEW "B")

7/16" PUSHNUT INSTALLED ON ROLLER SHAFT

14 GA. GALV. STEEL (END) HINGE. (SEE VIEW "A")
2" LONG STEM ROLLERS FEATURE (10) 1/4" DIA. STEEL BALL BEARINGS FULL FLOATING IN CASE HARDENED STEEL RACES

THIS DOOR MEETS THE REQUIREMENTS OF THE LARGE MISSILE IMPACT AND CYCLIC TESTING.

REVISIONS

REV. NO.	ZONE:	DATE:	ECN NO.	APPVD:	DESCRIPTION
02	-	12/2008	-	-	ADDED MPC.
03	-	08/2012	-	-	REVISED FOR TDI
04	-	08/2016	-	-	REMOVED WIND SPEED TABLE.

SECTION 1 - 1

SECTIONS ARE 1-7/8" THK PANELS ROLL FORMED OF .022" MIN. HOT DIPPED G-40 GALVANIZING, ROLL FORMED STEEL.

3" TALL x 20 GA. GALV. STEEL U-BAR. MIN YIELD STRENGTH 50KSI. ATTACHED ONE AT THE TOP OF EACH SECTION EACH U-BAR ATTACHED WITH (2) 1/4"x3/4" SELF TAPPING SCREWS PER STILE LOCATION.

ADJUSTABLE TOP ROLLER BRACKET OF 12 GA. GALV. STEEL, INSTALLED ON DOOR WITH (4) #14 X 5/8" LG SHEET METAL SCREWS

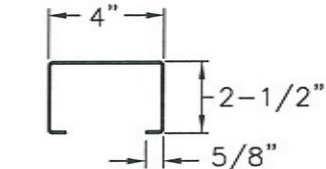
ONE 4" 14 GA. C-CHANNEL PER DOOR SECTION. (1) 1/4" x 3/4" SELF TAPPING SCREW PER STILE. (SEE VIEW "D")

1-1/4"WIDE X 16 GA. GALV. STRAP. (9) PER DOOR SECTION. EACH STRAP ATTACHED WITH (3) 1/4" x 3/4" SELF TAPPING SCREWS. TWO SCREWS TO DOOR, ONE SCREW TO C-CHANNEL.

END HINGE. SEE DETAILS AT VIEW "A".

TONGUE & GROOVE JOINT

MIN. TWO POINT LOCKING REQ'D. EACH SLIDE LOCK ATTACHED WITH (2) 1/4"x3/4" STS.



VIEW "D"
4" TALL C-CHANNEL
14 GA. GALV. STEEL
MIN YIELD STRENGTH 50KSI

BOTTOM ROLLER BRACKET OF 13 GA. MIN. GALV. STEEL, FASTENED WITH (4) #14 X 5/8" LG SHT. MTL. SCREWS

BOTTOM SECTION REINFORCED WITH TEMPERED ALUMINUM EXTRUSION WITH INTEGRAL RETAINER FOR FLEXIBLE VINYL ASTRAGAL

DESIGN LOADS: +50 & -56 P.S.F.
TEST LOADS: +75 & -84 P.S.F.

MANUFACTURING PRODUCT CODE: MPC: C-PAN-1E448

WINDLOAD RATING W8

Clopay Building Products Company

8585 Duke Boulevard
Mason, OH 45040 USA
Tel. No. 513-770-4800
Fax No. 513-770-4853

DESCRIPTION: COMMERCIAL RIBBED DOOR, +50/-56 PSF DESIGN LOAD

DRAWN BY: BFA

DATE: 09/27/04

SCALE: N/A

DWG. B

CHECKED BY: MWW

DATE: 11/02/04

SHEET 1 OF 1

DWG. NO.: 103288

VER: TDI

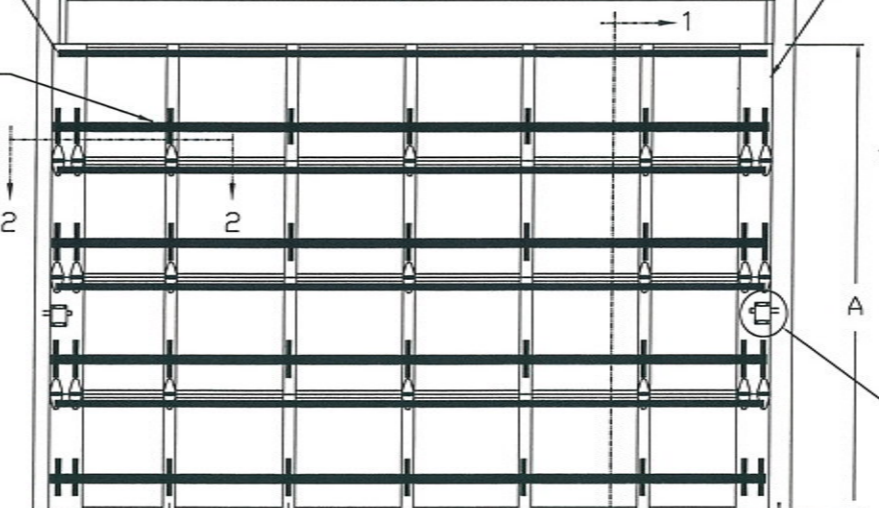
SECTION 2 - 2

MAJOR RIBS NOT SHOWN FOR CLARITY

U-BAR. SEE SECTION 1-1 FOR MOUNTING DETAILS AND SPECIFICATION.

C-CHANNEL. SEE SECTION 1-1 FOR MOUNTING DETAILS AND SPECIFICATIONS.

DOUBLE END STILE



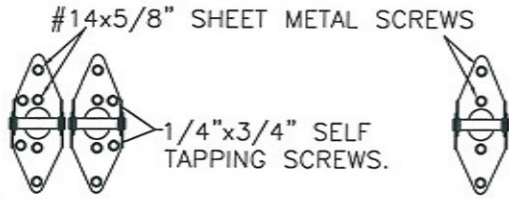
22" O.C. TYP.

MAX. DOOR WIDTH: 14'-2"

AVAILABLE IN 3" TAPERED REVERSE ANGLE TRACK. TRACK BOLT AND LAG SCREW SPACING 3-1/2", 10" AND EVERY 12" AS NOTED ABOVE.

DOOR HEIGHT 'A'	NUMBER OF SECTIONS
8'-0"	4
8'-3" THRU 10'-0"	5
10'-3" THRU 12'-0"	6
12'-3" THRU 14'-0"	7
14'-3" THRU 16'-0"	8
16'-3" THRU 18'-0"	9

MAX. SECTION HEIGHT: 24"



VIEW "A"

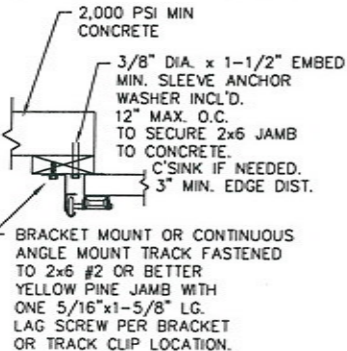
14 GA. DOUBLE END HINGES
ATTACH ON EACH HINGE AS SHOWN:
(4) #14 X 5/8" LG. SHT. MTL. SCREWS AND
(2) 1/4"x3/4" SELF-TAPPING SCREWS.

VIEW "B"

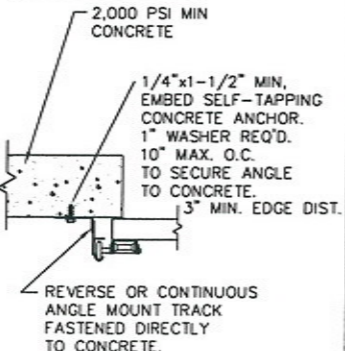
14 GA. INTERMEDIATE HINGE
ATTACH ON EACH HINGE AS SHOWN:
(4) 1/4" X 5/8" SHEET METAL SCREWS

ANCHOR NOTE: FIRST (BOTTOM) ANCHOR STARTING AT NO MORE THAN HALF OF THE MAXIMUM ON-CENTER DISTANCE. HIGHEST ANCHOR INSTALLED AT LEAST AS HIGH AS THE DOOR OPENING.

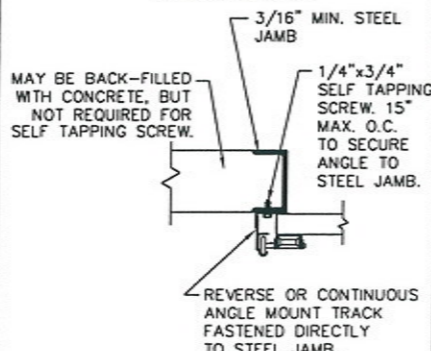
WOOD JAMB ON CONCRETE



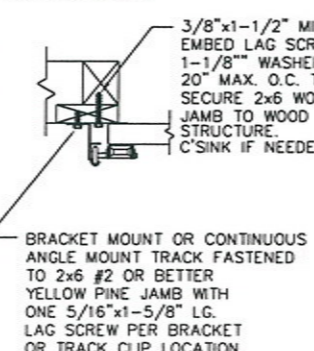
CONCRETE JAMBS



STEEL JAMBS



WOOD JAMBS



8/12/16
MARK WESTERFIELD, P.E.
FLORIDA P.E. No. 48495
NC P.E. #23832, TEXAS P.E. #91513

THE DESIGN OF THE ERECTOR SUPPORTING STRUCTURAL ELEMENTS IS THE RESPONSIBILITY OF THE BUILDING ENGINEER OR ARCHITECT OF RECORD.

Unless Stated Otherwise TOLERANCES are
+ .0000 = ±.031
+ .0000 = ±.015
+ .0000 = ±.005
+ .0000 = ±.001
Degrees = ± 1/2'
Unless Stated Otherwise DIMENSIONS ARE IN INCHES.

4

3

2

1