

NOTES:

1. NON-IMPACT RESISTANT GLAZING OPTION (SEE PAGE 3) - .090" MINIMUM SSB ANNEALED GLAZING IN MOLDED FRAMES SCREWED TOGETHER WITH DIMENSIONS SHOWN IN TABLE, INSTALLED IN TOP OR INTERMEDIATE SECTION (WITH OR WITHOUT DECORATIVE INSERTS) MEETS UNIFORM STATIC WIND PRESSURES SHOWN ON THIS DRAWING. GLAZING IS NOT IMPACT RESISTANT AND DOES NOT MEET THE REQUIREMENTS FOR WIND-BORNE DEBRIS REGIONS.

2. VINYL OR WOOD DOOR STOP NAILED A MAXIMUM OF 6" O.C. MUST OVERLAP TOP AND BOTH ENDS OF PANELS MINIMUM 7/16" TO MEET NEGATIVE PRESSURES.

3. KEY LOCK, SLIDE LOCK, OR OPERATOR REQUIRED.

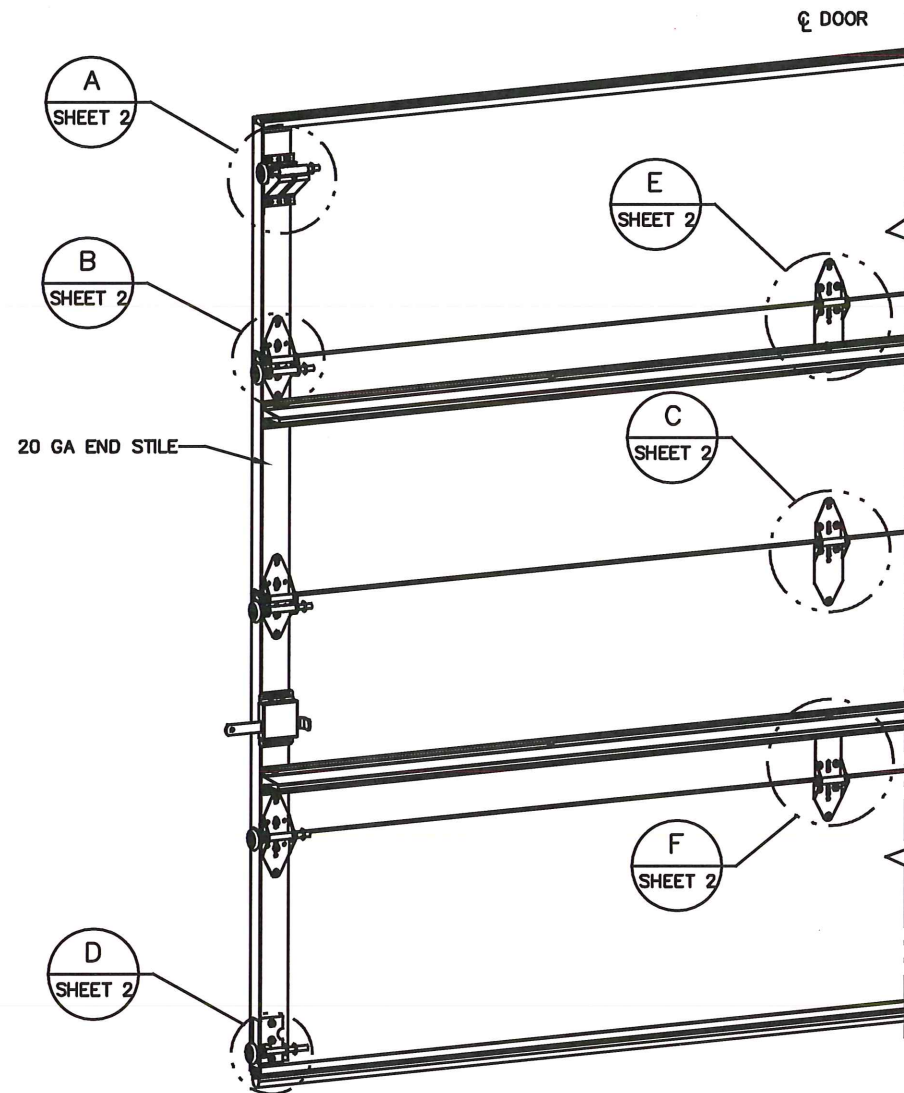
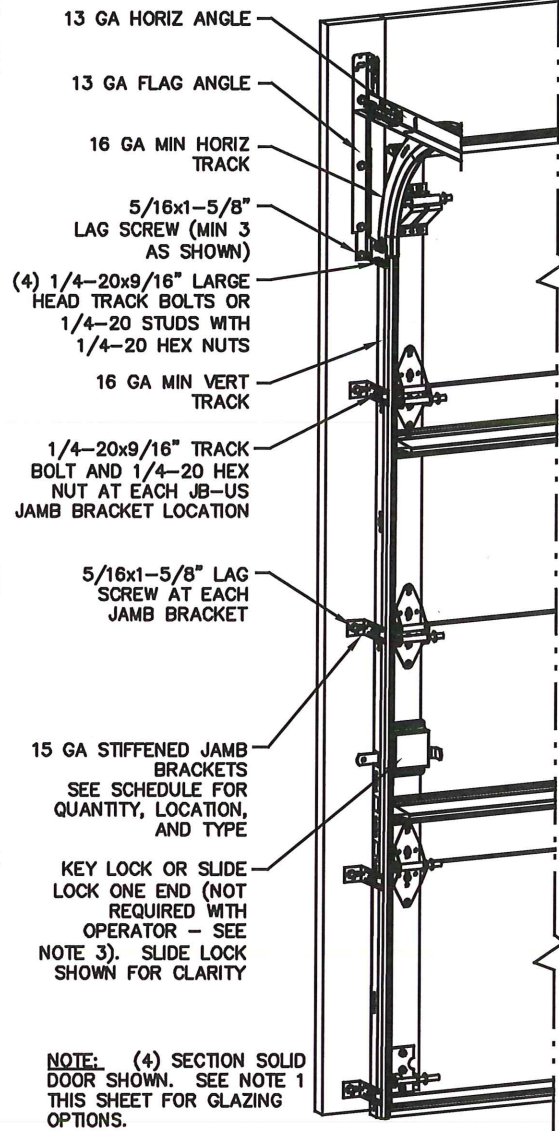
4. FACER STEEL TO HAVE A MINIMUM 29 GA THICKNESS AND BACKER STEEL TO HAVE A MINIMUM 29 GA THICKNESS.

5. EACH SECTION HAS AN INTERNAL 1" WIDE X 20 GA CONTINUOUS STEEL STRIP AT THE TOP AND BOTTOM OF THE SECTION.

6. THE DESIGN OF THE SUPPORTING STRUCTURAL ELEMENTS SHALL BE THE RESPONSIBILITY OF THE PROFESSIONAL OF RECORD FOR THE BUILDING OR STRUCTURE AND IN ACCORDANCE WITH CURRENT BUILDING CODES FOR THE LOADS LISTED ON THIS DRAWING.

7. DOOR JAMB TO BE MINIMUM 2x6 STRUCTURAL GRADE LUMBER. REFER TO JAMB CONNECTION SUPPLEMENT FOR ATTACHMENT TO SUPPORTING STRUCTURE.

8. FOR LOW HEAD ROOM LIFT CONDITIONS, TOP BRACKET SHALL BE A 13 GA LHR 7/4 TOP BRACKET WITH A MINIMUM OF (3) 1/4-20x3/4" SELF DRILLING CRIMPITTE SCREWS IN LIEU OF THE BRACKET SHOWN ON THIS DRAWING. U-BAR ON TOP SECTION SHALL BE INSTALLED ON TOP OF LHR TOP BRACKETS.

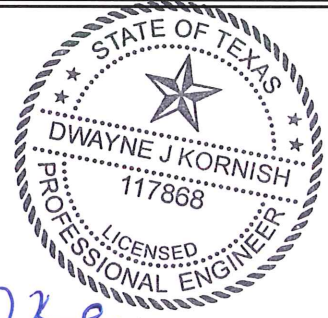


REVISIONS	
REV - REVISED MODELS PER WL008 SW 9/14/2020	
REV A - UPDATED DRAWING TO SHOW GLAZING CROSS-SECTION TLC 3/30/21	

SUPERIMPOSED DESIGN PRESSURE LOADS ON SUPPORTING STRUCTURE		
DOOR WIDTH	DOOR HEIGHT	UNIFORM LOAD EACH JAMB (PLF)
8'-2"	ALL	+78.0/-84.1
9'-2"	ALL	+87.5/-94.4

JAMB BRACKET SCHEDULE			
DOOR HEIGHT	NO. OF SECTIONS	NO. OF JAMB BRACKETS (EACH JAMB)	LOCATION OF CENTERLINE OF JAMB BRACKETS MEASURED FROM BOTTOM OF TRACK (ALL DIMENSIONS ± 2")
6'-6"	4	4	2" (JB-US), 21-3/4" (JB-US), 48" (JB-US), 57-1/4" (JB-US)
7'-0"	4	4	2" (JB-US), 21-3/4" (JB-US), 42" (JB-US), 63-1/4" (JB-US)
7'-6"	4 OR 5	4	2" (JB-US), 26-3/4" (JB-US), 45" (JB-US), 74-1/2" (JB-US)
8'-0"	4 OR 5	4	2" (JB-US), 21-3/4" (JB-US), 48" (JB-US), 75-1/2" (JB-US)
> 8'-0"			SEE NOTE BELOW

NOTE: (JB-US) FOLLOWING DIMENSION DENOTES SLOTTED JAMB BRACKET ATTACHED TO TRACK WITH 1/4-20x9/16" TRACK BOLT AND NUT AS SHOWN ABOVE.
 ALL DOORS GREATER THAN 8' IN HEIGHT REQUIRE USE OF CONTINUOUS WALL ANGLE. SEE SUPPLEMENT TRACK CHART FOR DETAILS.



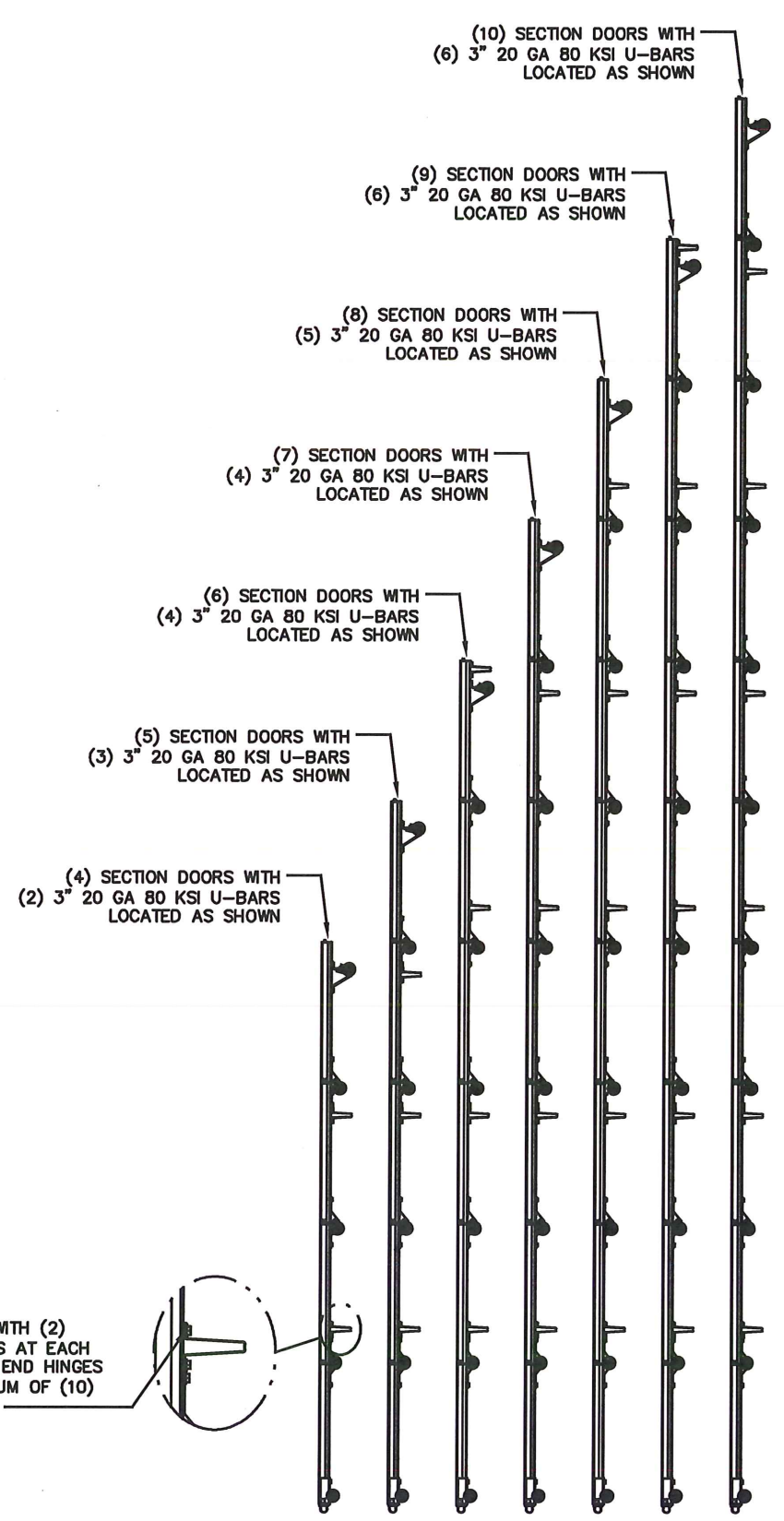
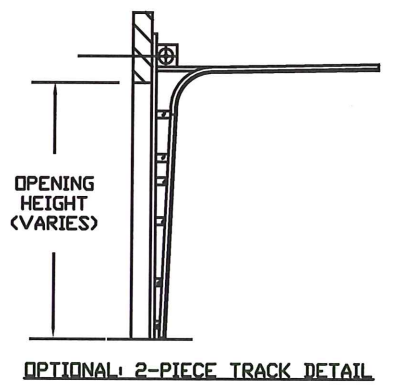
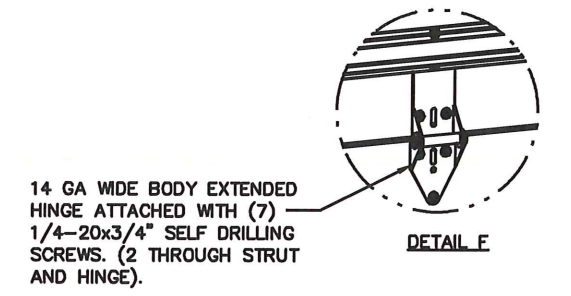
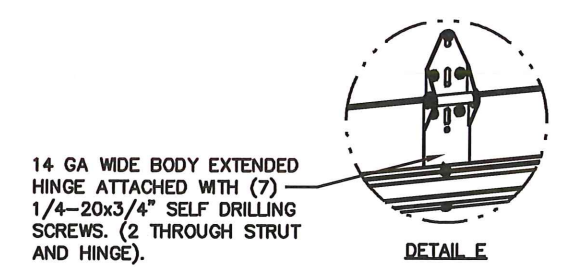
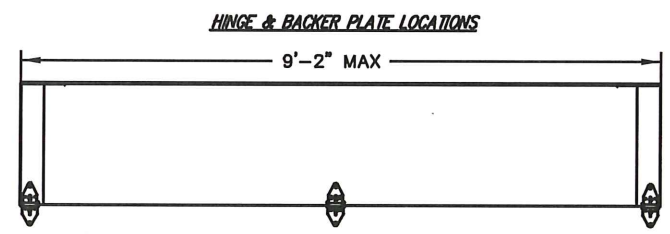
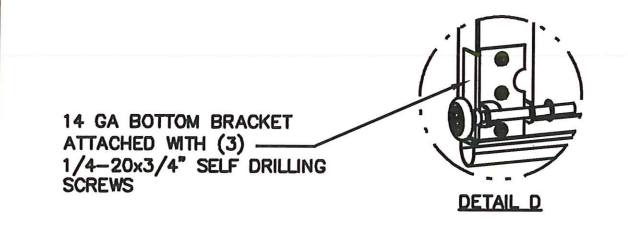
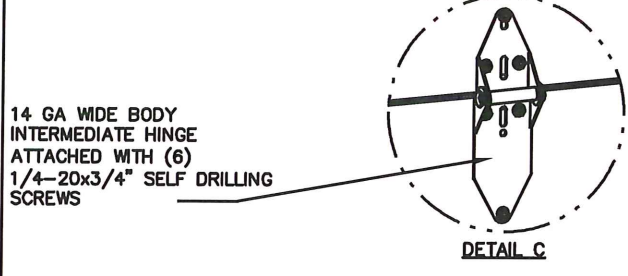
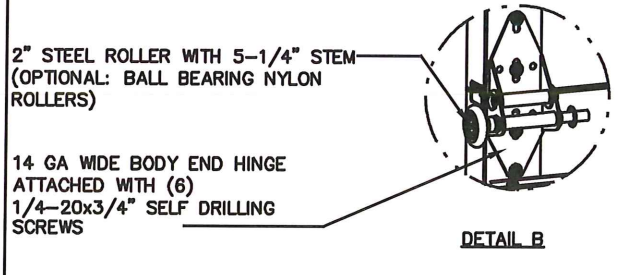
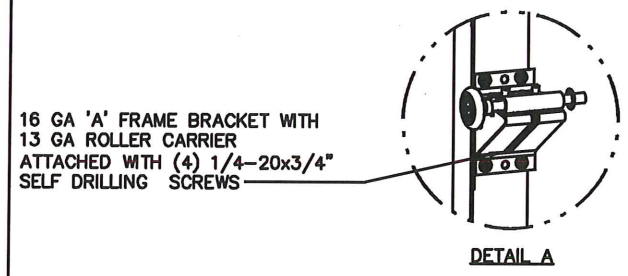
DJK
 4/16/2021
 DWAYNE J. KORNISH, PE
 4576 COUNTY ROAD 160
 MOUNT HOPE, OHIO
 FL PE 77845
 TX PE 117868
 PROFESSIONAL ENGINEER'S SEAL PROVIDED ONLY FOR VERIFICATION OF WINDLOAD CONSTRUCTION DETAILS.

COMPLIES WITH THE REQUIREMENTS OF IBC/IRC 2018.

The Genuine. The Original.

 A DIVISION OF OVERHEAD DOOR CORP
 3395 ADDISON DRIVE
 PENSACOLA, FLORIDA 32514
 (850) 474-9890

STATIC PRESSURE RATINGS		APPROVED SIZES	SCALE: N.T.S.	SIZE: A
DESIGN (PSF):	+19.10/-20.60	MAX WIDTH: 9'-2"	DATE	NAME
TEST (PSF):	+28.65/-30.90	MAX HEIGHT: 24'-0"	DRAWN 05/07/20	SW
IMPACT/CYCLIC RATED (YES/NO):	NO	MAX SECTION HEIGHT: 24"	CHECKED 3/30/21	TLC
MODELS 190/490/160/593/594/591/592/596/599/5740/5760/7560			SHEET 1 OF 3	
WINDLOAD SPECIFICATION OPTION CODE 2201			DRAWING PART NO. 411703	REV. A

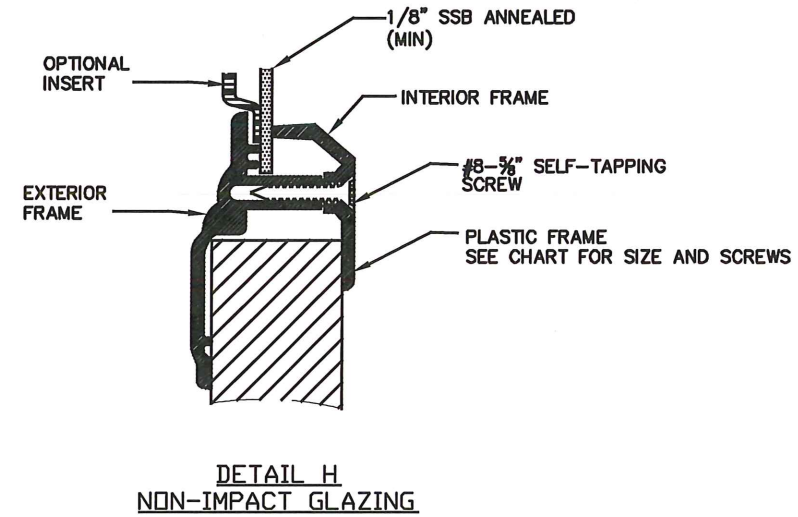
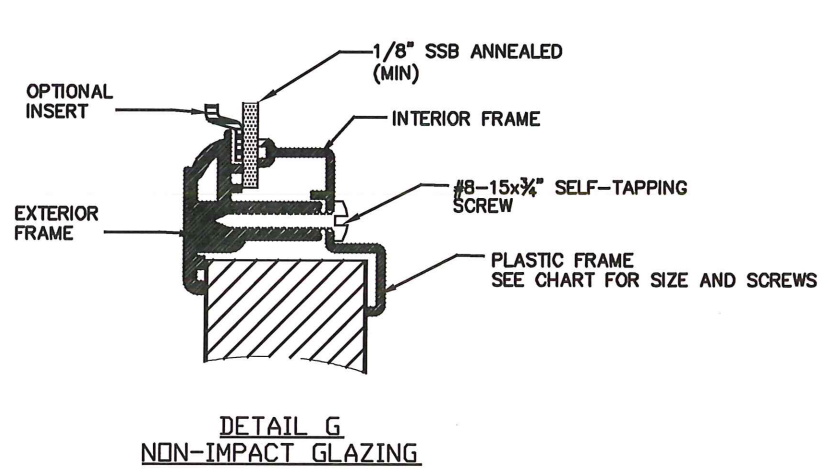


ALL U-BARS SHALL BE ATTACHED WITH (2) 1/4-20x3/4\"/>

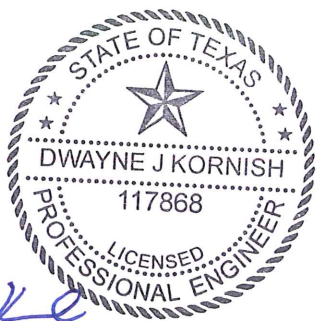
STATE OF TEXAS
 DWAYNE J KORNISH
 117868
 LICENSED PROFESSIONAL ENGINEER
 DWAYNE J. KORNISH, PE
 4578 COUNTY ROAD 180
 MOUNT HOPE, OHIO
 FL PE 77945
 TX PE 117868
 PROFESSIONAL ENGINEER'S SEAL PROVIDED ONLY FOR VERIFICATION OF WINDLOAD CONSTRUCTION DETAILS.

The Genuine. The Original.
OVERHEAD DOOR
 A DIVISION OF OVERHEAD DOOR CORP
 3395 ADDISON DRIVE
 PENSACOLA, FLORIDA 32514
 (850) 474-9890

STATIC PRESSURE RATINGS	APPROVED SIZES	SCALE: N.T.S.	SIZE: A
DESIGN (PSF): +19.10/-20.60	MAX WIDTH: 9'-2"	DATE	NAME
TEST (PSF): +28.65/-30.90	MAX HEIGHT: 24'-0"	DRAWN 5/07/20	SW
IMPACT/CYCLIC RATED (YES/NO): NO	MAX SECTION HEIGHT: 24"	CHECKED 3/30/21	TLC
MODELS 190/490/160/593/594/591/592/596/599/5740/5760/7560	SHEET 2 OF 3		
WINDLOAD SPECIFICATION OPTION CODE 2201	DRAWING PART NO. 411703	REV. A	



OUTSIDE FRAME SIZE	DAYLIGHT OPENING (DLO)	SCREW QTY EA HORIZ LEG	SCREW QTY EA VERT LEGS	SCREW QTY TOTAL	DETAIL
17"X51"	14X48	5	3	16	G
15.1X44"	11.5"X40.5"	8	3	22	H
14.9X20.8"	11"X17"	3	3	12	H
7"X40.8	4"X37.8"	5	2	14	H



DJK
 4/4/2021
 DWAYNE J. KORNISH, PE
 4578 COUNTY ROAD 160
 MOUNT HOPE, OHIO
 FL PE 77945
 TX PE 117868

PROFESSIONAL ENGINEER'S SEAL PROVIDED ONLY FOR VERIFICATION OF WINDLOAD CONSTRUCTION DETAILS.



A DIVISION OF OVERHEAD DOOR CORP
 3395 ADDISON DRIVE
 PENSACOLA, FLORIDA 32514
 (850) 474-9890

STATIC PRESSURE RATINGS		APPROVED SIZES		SCALE: N.T.S.		SIZE: A	
DESIGN (PSF):	+19.10/-20.60	MAX WIDTH:	9'-2"	DATE	5/07/20	NAME	SW
TEST (PSF):	+28.65/-30.90	MAX HEIGHT:	24'-0"	DRAWN	3/30/21	CHECKED	TLC
IMPACT/CYCLIC RATED (YES/NO): NO		MAX SECTION HEIGHT: 24"	SHEET 3 OF 3				
MODELS 190/490/160/593/594/591/592/596/599/5740/5760/7560				DRAWING PART NO.		REV.	
WINDLOAD SPECIFICATION OPTION CODE 2201				411703		A	