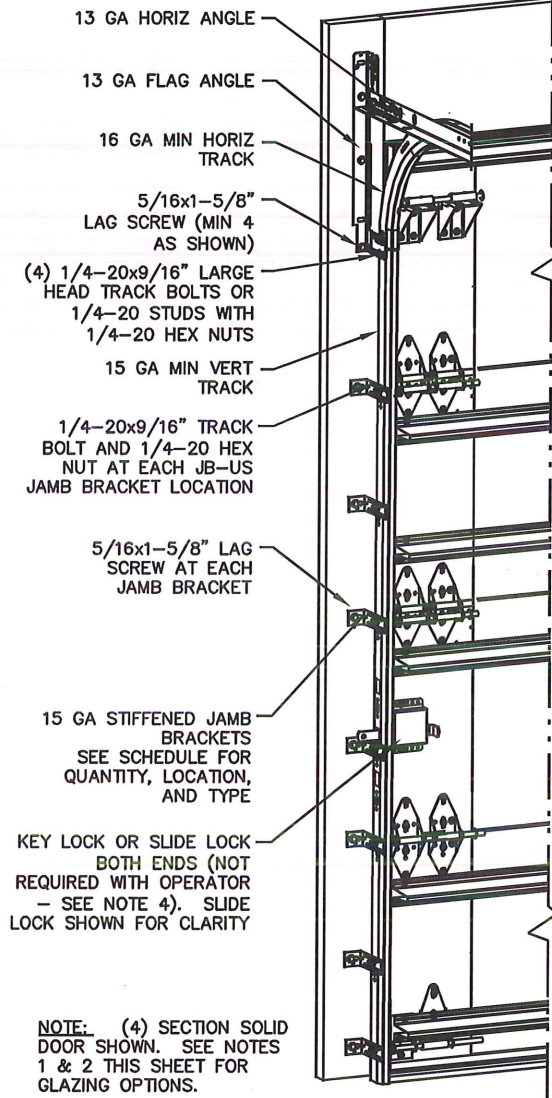
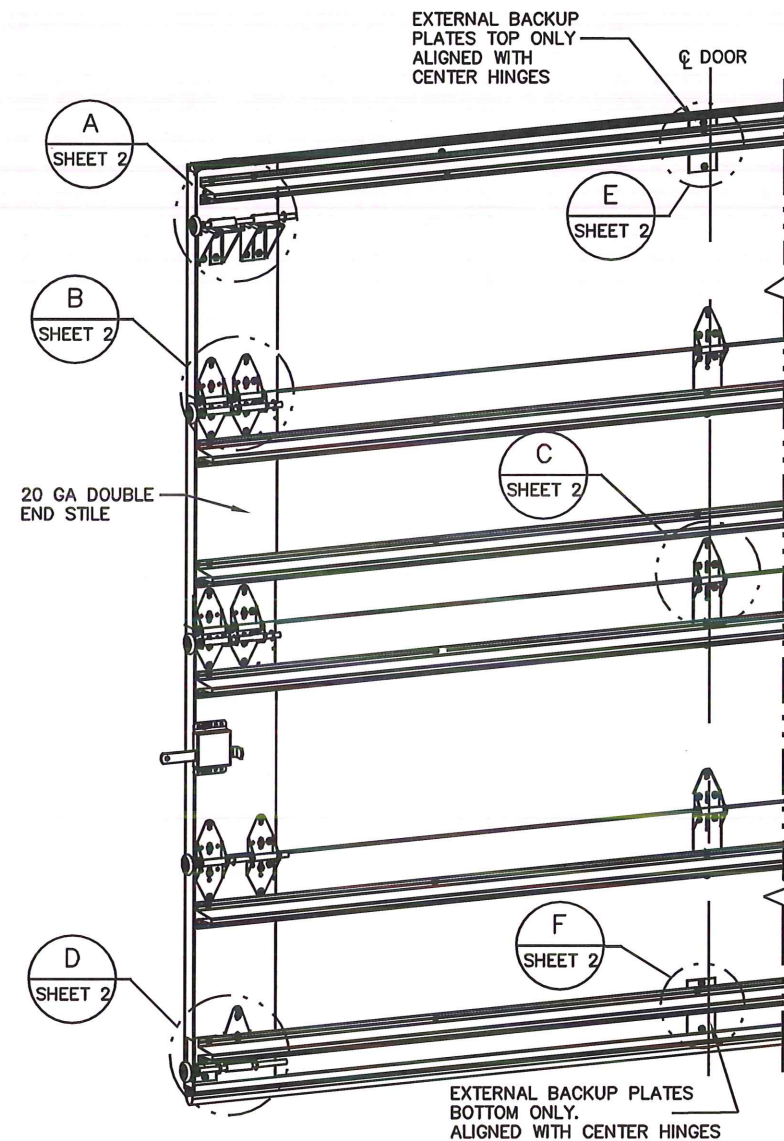


NOTES:

1. IMPACT RESISTANT GLAZING OPTION (SEE PAGE 3) - 1/4" IMPACT RESISTANT POLYCARBONATE IN ALUMINUM FRAMES SCREWED TOGETHER WITH DIMENSIONS SHOWN IN TABLE, INSTALLED IN TOP OR INTERMEDIATE SECTION (WITH OR WITHOUT DECORATIVE INSERT) MEETS UNIFORM STATIC WIND PRESSURES SHOWN ON THIS DRAWING. GLAZING IS IMPACT RESISTANT AND MEETS THE REQUIREMENTS FOR WIND-BORNE DEBRIS REGIONS.
2. NON-IMPACT RESISTANT GLAZING OPTION (SEE PAGE 3) - .090" MINIMUM SSB ANNEALED GLAZING IN MOLDED FRAMES SCREWED TOGETHER WITH DIMENSIONS SHOWN IN TABLE, INSTALLED IN TOP OR INTERMEDIATE SECTION (WITH OR WITHOUT DECORATIVE INSERTS) MEETS UNIFORM STATIC WIND PRESSURES SHOWN ON THIS DRAWING. GLAZING IS NOT IMPACT RESISTANT AND DOES NOT MEET THE REQUIREMENTS FOR WIND-BORNE DEBRIS REGIONS.
3. VINYL OR WOOD DOOR STOP NAILED A MAXIMUM OF 6" O.C. MUST OVERLAP TOP AND BOTH ENDS OF PANELS MINIMUM 7/16" TO MEET NEGATIVE PRESSURES.
4. KEY LOCK, SLIDE LOCK, OR OPERATOR REQUIRED.
5. FACER STEEL TO HAVE A MINIMUM 29 GA THICKNESS AND BACKER STEEL TO HAVE A MINIMUM 29 GA THICKNESS.
6. EACH SECTION HAS AN INTERNAL 1" WIDE X 20 GA CONTINUOUS STEEL STRIP AT THE TOP AND BOTTOM OF THE SECTION.
7. THE DESIGN OF THE SUPPORTING STRUCTURAL ELEMENTS SHALL BE THE RESPONSIBILITY OF THE PROFESSIONAL OF RECORD FOR THE BUILDING OR STRUCTURE AND IN ACCORDANCE WITH CURRENT BUILDING CODES FOR THE LOADS LISTED ON THIS DRAWING.
8. DOOR JAMB TO BE MINIMUM 2x6 STRUCTURAL GRADE LUMBER. REFER TO JAMB CONNECTION SUPPLEMENT FOR ATTACHMENT TO SUPPORTING STRUCTURE.
9. FOR LOW HEAD ROOM LIFT CONDITIONS, TOP BRACKET SHALL BE A 13 GA LHR 7/4" TOP BRACKET WITH A MINIMUM OF (3) 1/4-20x3/4" SELF DRILLING CRIMPTITE SCREWS IN LIEU OF THE BRACKET SHOWN ON THIS DRAWING. U-BAR ON TOP SECTION SHALL BE INSTALLED ON TOP OF LHR TOP BRACKETS.



NOTE: (4) SECTION SOLID DOOR SHOWN. SEE NOTES 1 & 2 THIS SHEET FOR GLAZING OPTIONS.



REVISIONS

P1 REVISED MODELS PER WL008 SW 9/14/2020
REV A - UPDATED DRAWING TO SHOW GLAZING CROSS-SECTION TLC 3/30/21
REV B - UPDATED PER PCR 32769 SW 2/16/22

SUPERIMPOSED DESIGN PRESSURE LOADS ON SUPPORTING STRUCTURE

DOOR WIDTH	DOOR HEIGHT	UNIFORM LOAD EACH JAMB (PLF)
8'-2"	ALL	+187.8/-212.3
9'-2"	ALL	+210.8/-238.3

JAMB BRACKET SCHEDULE

DOOR HEIGHT	NO. OF SECTIONS	NO. OF JAMB BRACKETS (EACH JAMB)	LOCATION OF CENTERLINE OF JAMB BRACKETS MEASURED FROM BOTTOM OF TRACK (ALL DIMENSIONS ± 2")
6'-6"	4	7	2" (JB-US), 10" (JB-US), 21-3/4" (JB-US), 29-3/4" (JB-US), 39" (JB-US), 48" (JB-US), 57-1/4" (JB-US)
7'-0"	4	7	2" (JB-US), 10" (JB-US), 21-3/4" (JB-US), 29-3/4" (JB-US), 42" (JB-US), 52-1/2" (JB-US), 63-1/4" (JB-US)
7'-6"	4 OR 5	8	2" (JB-US), 10" (JB-US), 18-3/4" (JB-US), 26-3/4" (JB-US), 36" (JB-US), 45" (JB-US), 54-1/4" (JB-US), 74-1/2" (JB-US)
8'-0"	4 OR 5	8	2" (JB-US), 10" (JB-US), 21-3/4" (JB-US), 29-3/4" (JB-US), 39" (JB-US), 48" (JB-US), 57-1/2" (JB-US), 75-1/2" (JB-US)
> 8'-0"			SEE NOTE BELOW

NOTE: (JB-US) FOLLOWING DIMENSION DENOTES SLOTTED JAMB BRACKET ATTACHED TO TRACK WITH 1/4-20x9/16" TRACK BOLT AND NUT AS SHOWN ABOVE.
ALL DOORS GREATER THAN 8' IN HEIGHT REQUIRE USE OF CONTINUOUS WALL ANGLE. SEE SUPPLEMENT TRACK CHART FOR DETAILS.

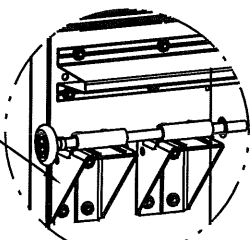
DWAYNE J. KORNISH, PE
4576 COUNTY ROAD 160
MOUNT HOPE, OHIO
FL PE 77945
TX PE 117868

PROFESSIONAL ENGINEER'S SEAL PROVIDED ONLY FOR VERIFICATION OF WINDLOAD CONSTRUCTION DETAILS.

COMPLIES WITH THE REQUIREMENTS OF IBC/IRC 2018.

The Genuine. The Original. A DIVISION OF OVERHEAD DOOR CORP 3395 ADDISON DRIVE PENSACOLA, FLORIDA 32514 (850) 474-9890	STATIC PRESSURE RATINGS DESIGN (PSF): +46.00/-52.00 TEST (PSF): +69.00/-78.00 IMPACT/CYCLIC RATED (YES/NO): YES	APPROVED SIZES MAX WIDTH: 9'-2" MAX HEIGHT: 24'-0" MAX SECTION HEIGHT: 24"	SCALE: N.T.S. DATE: 5/18/20 CHECKED: 3/30/21	SIZE: A NAME: SW TLC
	MODELS 190/490/160/593/594/591/592/596/599/5740/5760/7560 WINDLOAD SPECIFICATION OPTION CODE 2206		SHEET 1 OF 3 DRAWING PART NO. 411708 REV. B	

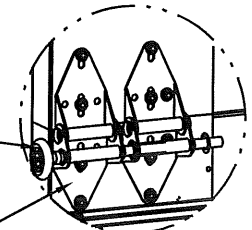
(2) 12 GA COMMERCIAL TOP FRAME BRACKETS WITH 13 GA ROLLER CARRIERS EACH ATTACHED WITH (4) 1/4-20x3/4" SELF DRILLING SCREWS



DETAIL A

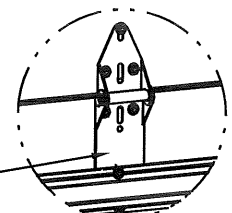
ADD (2) 1/4-20x3/4" SELF DRILLING SCREWS (INSIDE OF EACH INSIDE END HINGE)

2" STEEL ROLLER WITH 9" GRADE 1144 OR EQUIVALENT STEM AND 7/16" PUSH NUT AT EACH ROLLER LOCATION. 1/4" MAX BETWEEN PUSH NUT AND OUTER HINGE. (OPTIONAL: BALL BEARING NYLON ROLLER)



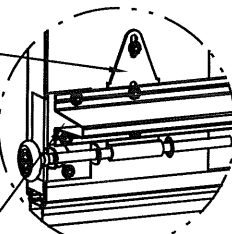
DETAIL B

(2) 13 GA WIDE BODY END HINGES EACH ATTACHED WITH (4) 1/4-20x3/4" SELF DRILLING SCREWS



DETAIL C

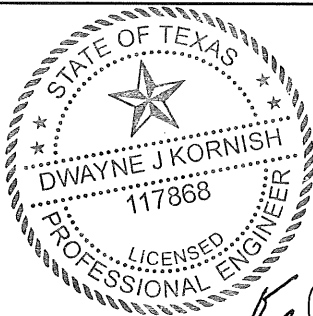
14 GA WIDE BODY EXTENDED HINGE ATTACHED WITH (7) 1/4-20x3/4" SELF DRILLING SCREWS. (2 THROUGH STRUT AND HINGE)



DETAIL D

12 GA EXTENSION BRACKET ATTACHED WITH (3) 1/4-20x3/4" SELF DRILLING SCREWS (2 THROUGH STRUT AND BRACKET)

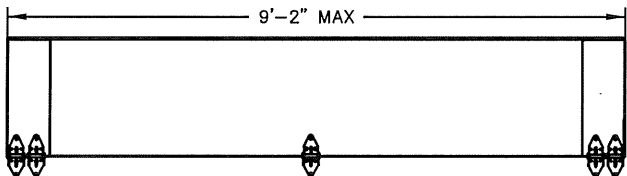
14 GA BOTTOM BRACKET ATTACHED WITH (3) 1/4-20x3/4" SELF DRILLING SCREWS (2 THROUGH STRUT AND BRACKET)



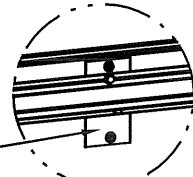
DWAYNE J. KORNISH, PE
4576 COUNTY ROAD 160
MOUNT HOPE, OHIO
FL PE 77945
TX PE 117868

PROFESSIONAL ENGINEER'S SEAL PROVIDED ONLY FOR VERIFICATION OF WINDLOAD CONSTRUCTION DETAILS.

HINGE & BACKER PLATE LOCATIONS

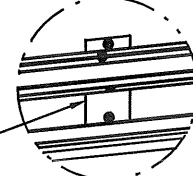


20 GA BACK PLATE ATTACHED WITH DOUBLE SIDED TAPE AND (2) 1/4-20x3/4" SELF DRILLING SCREWS AT TAPE LOCATION. UBAR ATTACHED WITH (2) 1/4-20x3/4" THROUGH STRUT AND PLATE.

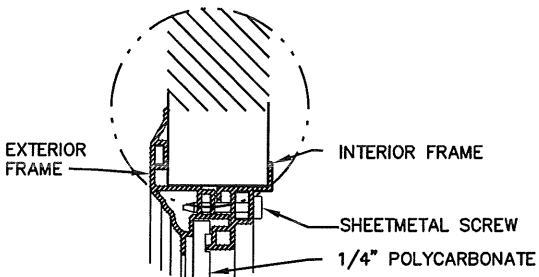


DETAIL E

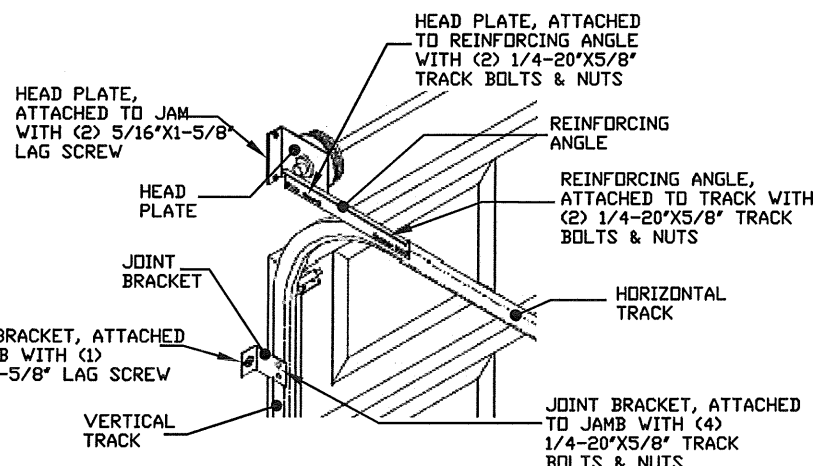
20 GA BACK PLATE ATTACHED WITH DOUBLE SIDED TAPE AND (2) 1/4-20x3/4" SELF DRILLING SCREWS AT TAPE LOCATION. UBAR ATTACHED WITH (2) 1/4-20x3/4" THROUGH STRUT AND PLATE.



DETAIL F



DETAIL G



OPTIONAL 2-PIECE TRACK DETAIL

ALL U-BARS SHALL BE ATTACHED WITH (2) 1/4-20x3/4" SELF DRILLING SCREWS AT EACH HINGE LOCATION AND BETWEEN ALL END HINGES AND INTERMEDIATE HINGES. A MINIMUM OF (10) FASTENERS ARE TO BE USED.

(10) SECTION DOORS WITH (15) 3" 20 GA 80 KSI U-BARS LOCATED AS SHOWN

(9) SECTION DOORS WITH (14) 3" 20 GA 80 KSI U-BARS LOCATED AS SHOWN

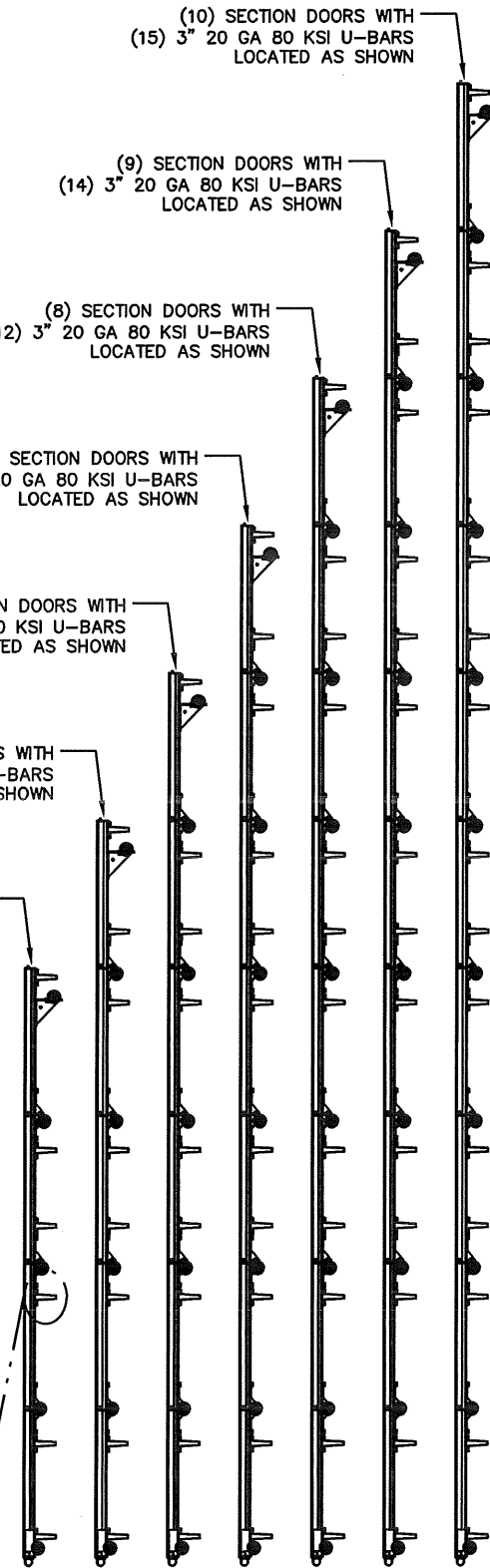
(8) SECTION DOORS WITH (12) 3" 20 GA 80 KSI U-BARS LOCATED AS SHOWN

(7) SECTION DOORS WITH (11) 3" 20 GA 80 KSI U-BARS LOCATED AS SHOWN

(6) SECTION DOORS WITH (9) 3" 20 GA 80 KSI U-BARS LOCATED AS SHOWN

(5) SECTION DOORS WITH (8) 3" 20 GA 80 KSI U-BARS LOCATED AS SHOWN

(4) SECTION DOORS WITH (6) 3" 20 GA 80 KSI U-BARS LOCATED AS SHOWN



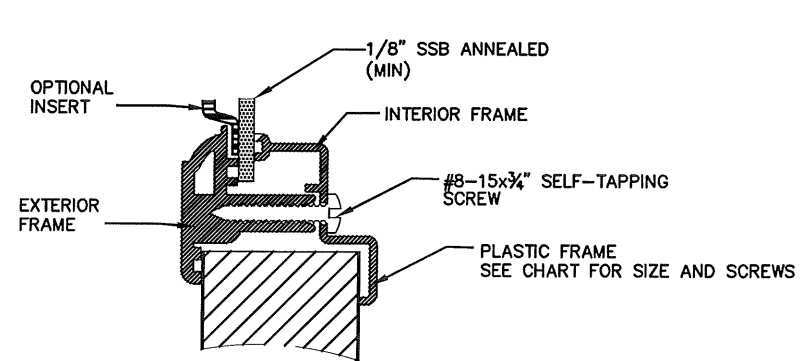
REVISIONS

The Genuine. The Original.

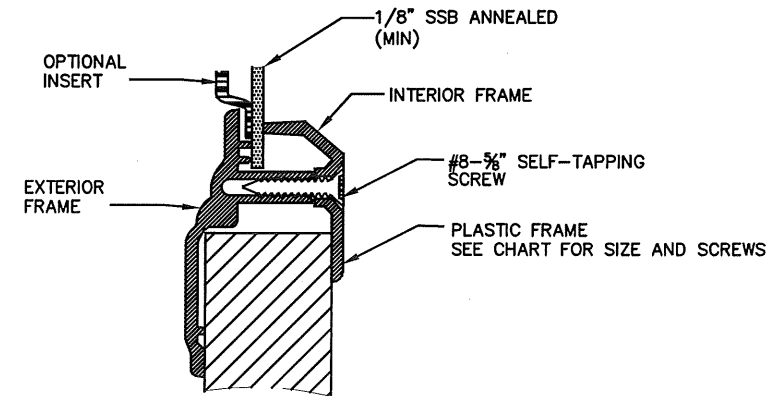


A DIVISION OF OVERHEAD DOOR CORP
3395 ADDISON DRIVE
PENSACOLA, FLORIDA 32514
(850) 474-9890

STATIC PRESSURE RATINGS		APPROVED SIZES		SCALE: N.T.S.		SIZE: A	
DESIGN (PSF):	+46.00/-52.00	MAX WIDTH:	9'-2"	DATE	NAME		
TEST (PSF):	+69.00/-78.00	MAX HEIGHT:	24'-0"	DRAWN	5/18/20	SW	
IMPACT/CYCLIC RATED (YES/NO):	YES	MAX SECTION HEIGHT: 24"	CHECKED	3/30/21	TLC		
MODELS 190/490/160/593/594/591/592/596/599/5740/5760/7560				SHEET 2 OF 3			
WINDLOAD SPECIFICATION OPTION CODE 2206				DRAWING PART NO.		REV.	
				411708		B	

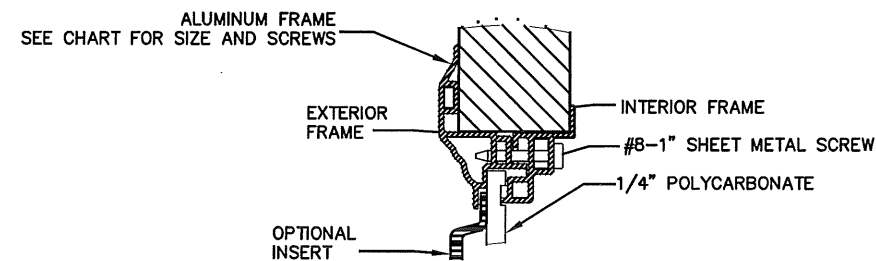


DETAIL G
NON-IMPACT GLAZING

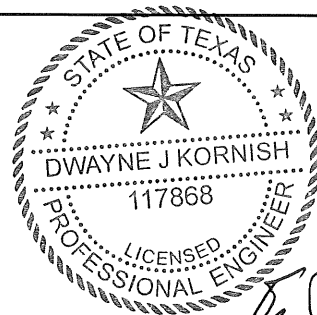


DETAIL H
NON-IMPACT GLAZING

OUTSIDE FRAME SIZE	DAYLIGHT OPENING (DLO)	SCREW QTY EA HORIZ LEG	SCREW QTY EA VERT LEGS	SCREW QTY TOTAL	DETAIL
17"X51"	14X48	5	3	16	G
15.1X44"	11.5"X40.5"	8	3	22	H
14.9X20.8"	11"X17"	3	3	12	H
7"X40.8	4"X37.8"	5	2	14	H
15.3"X44.1"	11.3"X40.1"	6	3	18	I
14.6"X20.8"	10.6"X16.8"	3	2	10	I
13"X38"	9"X34"	5	2	14	I



DETAIL I
IMPACT GLAZING



DWAYNE J. KORNISH, PE
4576 COUNTY ROAD 160
MOUNT HOPE, OHIO
FL PE 77945
TX PE 117868

PROFESSIONAL ENGINEER'S SEAL PROVIDED ONLY FOR VERIFICATION OF WINDLOAD CONSTRUCTION DETAILS.

DJK
3/11/2020

The Genuine. The Original.



A DIVISION OF OVERHEAD DOOR CORP
3395 ADDISON DRIVE
PENSACOLA, FLORIDA 32514
(850) 474-9890

STATIC PRESSURE RATINGS	APPROVED SIZES	SCALE: N.T.S.	SIZE: A
DESIGN (PSF): +46.00/-52.00	MAX WIDTH: 9'-2"	DATE	NAME
TEST (PSF): +69.00/-78.00	MAX HEIGHT: 24'-0"	DRAWN	5/18/20
IMPACT/CYCLIC RATED (YES/NO): YES	MAX SECTION HEIGHT: 24"	CHECKED	3/30/21
MODELS 190/490/160/593/594/591/592/596/599/5740/5760/7560	SHEET 3 OF 3		
WINDLOAD SPECIFICATION OPTION CODE 2206		DRAWING PART NO.	REV.
		411708	B