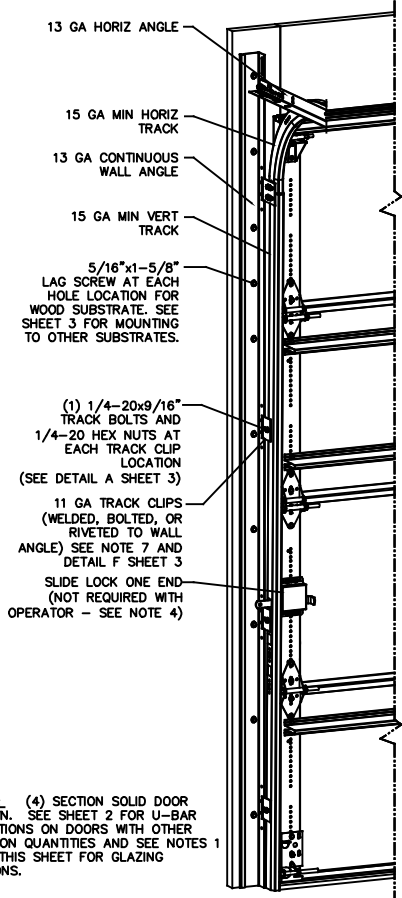


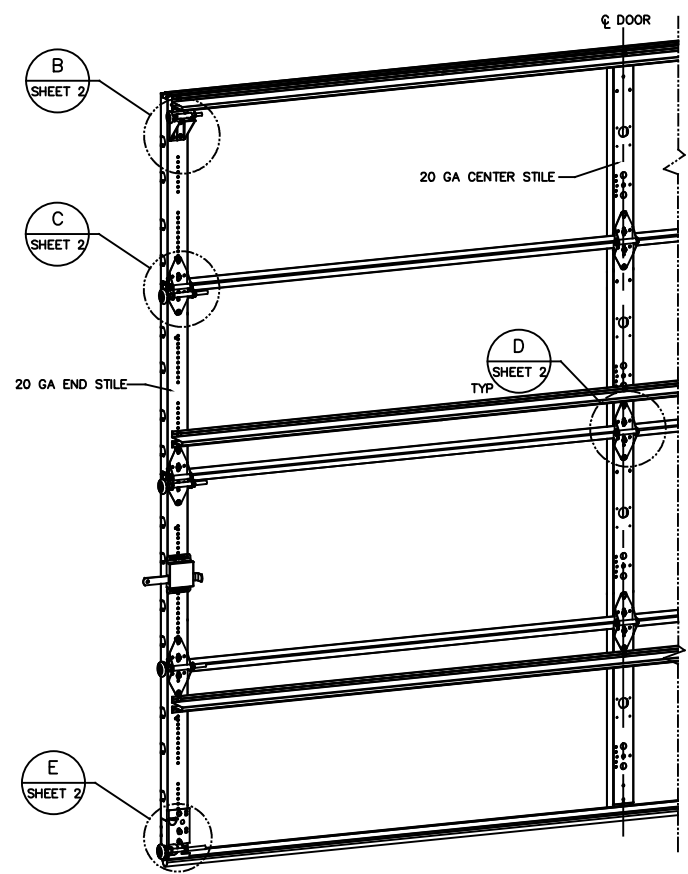
NOTES

- STANDARD GLAZING OPTION - .125" MINIMUM DSB GLAZING MEETS UNIFORM STATIC DESIGN PRESSURES SHOWN ON THIS DRAWING. GLAZING SHALL HAVE A MAXIMUM HEIGHT OF 6.70" AND A MAXIMUM LENGTH OF 24.00". GLAZING IS NOT IMPACT RESISTANT AND DOES NOT MEET THE REQUIREMENTS FOR WIND-BORNE DEBRIS REGIONS.
- ALUMINUM FULL VIEW OPTION - ALUMINUM FULL VIEW SECTION MAY REPLACE ANY SECTION EXCEPT TOP AND BOTTOM PANELS. ALUMINUM FULL VIEW SECTION SHALL HAVE RAILS AND STILES OF EXTRUDED ALUMINUM ALLOY 6063-T6 WITH A 2-1/4" INTEGRAL FIN AND .125" MINIMUM DSB GLAZING INSTALLED WITH ALUMINUM RETAINERS IN ORDER TO MEET UNIFORM STATIC DESIGN PRESSURES SHOWN ON THIS DRAWING. AFV PANEL SIZE IS 51.5"x21.9" (MAX). GLAZING IS NOT IMPACT RESISTANT AND DOES NOT MEET THE REQUIREMENTS FOR WIND-BORNE DEBRIS REGIONS.
- MINIMUM OF 1" OVERLAP ON BOTH JAMBS REQUIRED TO MEET NEGATIVE DESIGN PRESSURES.
- SLIDE LOCK OR OPERATOR REQUIRED.
- SECTION STEEL TO HAVE THE FOLLOWING MINIMUM THICKNESS:  
421, 423 - 20 GA  
427, 429 - 24 GA  
434, 436 - 25 GA
- THE DESIGN OF THE SUPPORTING STRUCTURAL ELEMENTS SHALL BE THE RESPONSIBILITY OF THE PROFESSIONAL OF RECORD FOR THE BUILDING OR STRUCTURE AND IN ACCORDANCE WITH CURRENT BUILDING CODES FOR THE LOADS LISTED ON THIS DRAWING.
- TRACK CLIPS SHALL BE LOCATED WITH CENTERLINE OF BOTTOM CLIP SPACED 10" MAX FROM BOTTOM OF TRACK AND REMAINING TRACK CLIPS SPACED AT 24" O.C. MAX. SPACING BETWEEN TOP TRACK CLIP AND SPLICE PLATE SHALL BE 30" O.C. MAX.
- WHEN MOUNTING TO WOOD, DOOR JAMB TO BE MINIMUM 2x6 STRUCTURAL GRADE LUMBER. REFER TO JAMB CONNECTION SUPPLEMENT FOR ATTACHMENT TO SUPPORTING STRUCTURE.



NOTE: (4) SECTION SOLID DOOR SHOWN. SEE SHEET 2 FOR U-BAR LOCATIONS ON DOORS WITH OTHER SECTION QUANTITIES AND SEE NOTES 1 & 2 THIS SHEET FOR GLAZING OPTIONS.

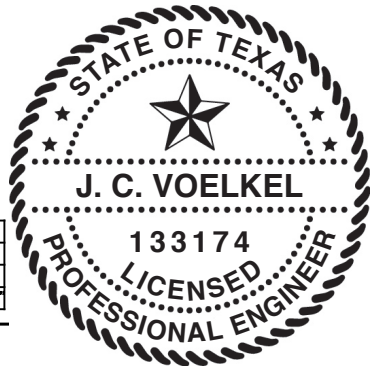
| REVISIONS |       |                        |           |          |
|-----------|-------|------------------------|-----------|----------|
| OR        | REV   | DESCRIPTION            | DATE      | APPROVAL |
|           | VL005 | - INITIAL DRAWING      | 1/13/2021 | TLC      |
|           | VL005 | A ADDED AFV PANEL SIZE | 4/27/21   | TLC      |



SUPERIMPOSED DESIGN PRESSURE LOADS ON SUPPORTING STRUCTURE

| MAX DOOR WIDTH | DOOR HEIGHT | MAX UNIFORM LOAD EACH JAMB (PLF) |
|----------------|-------------|----------------------------------|
| 9'-4"          | ALL         | +97.2/-109.7                     |

| STATIC PRESSURE RATINGS           | APPROVED SIZES          |
|-----------------------------------|-------------------------|
| DESIGN PRESSURE(PSF): +20.9/-23.6 | MAX WIDTH: 9'-4"        |
|                                   | MAX HEIGHT: 24'-1"      |
| IMPACT/CYCLIC RATED: NO           | MAX SECTION HEIGHT: 24' |

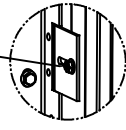


THE DOORS ARE DESIGNED AND MANUFACTURED TO COMPLY WITH THE 2018 IRC AND THE 2018 IBC.

THE DRAWINGS AND ALL OTHER INFORMATION CONTAINED HEREIN ARE THE CONFIDENTIAL AND PROPRIETARY PROPERTY OF OVERHEAD DOOR CORPORATION AND ITS AFFILIATED COMPANIES. THIS DRAWING AND INFORMATION, IN WHOLE OR IN PART, MAY NOT BE COPIED IN ANY MANNER OR DISCLOSED TO ANYONE WITHOUT THE PRIOR WRITTEN CONSENT OF OVERHEAD DOOR CORPORATION. NO DISCLOSURE OF ANY OF THIS DRAWING OR INFORMATION IS INTENDED TO OPERATE AS A LICENSE OR AUTHORIZATION TO USE IT FOR ANY PURPOSE WITHOUT THE SPECIFIC WRITTEN CONSENT OF OVERHEAD DOOR CORPORATION.

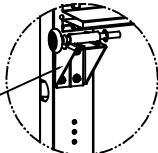
|  |  |  |                 |  |
|--|--|--|-----------------|--|
|  | TITLE: <b>DOOR</b><br>UNDER 251 +.004/--.003<br>251 TO 500 +.006/--.003<br>OVER 500 +.008/--.003 | FINISH: N/A<br>UNIT OF MEASURE: EA                                     | DATE: 9/12/2020 | DRAWING TITLE: WINDLOAD OPTION CODE 2063<br>SERIES 421/423/427/429/434/436,<br>40.9/-23.6 PSF, 9'-4" MAX |
|  | FRACTIONS: ± 1/16<br>ANGLES: ± .5°   | WHOLE NUMBERS: ± .25<br>.X ± .1<br>.XX ± .03<br>.XXX ± .010<br>. ± .5° | MATERIAL: N/A   | DRAWN BY: T CLARK<br>CHECKED BY: J QIAN<br>APPROVED BY: T CLARK  |

1/4-20x9/16" TRACK BOLT AND 1/4-20 HEX NUT THROUGH THE SLOT IN THE TRACK AND TRACK CLIP



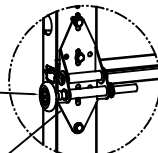
DETAIL A

12 GA COMMERCIAL TOP FRAME BRACKET WITH 13 GA ROLLER CARRIER ATTACHED WITH (4) 1/4-14x7/8" SELF DRILLING CRIMPITITE SCREWS



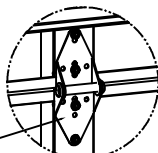
DETAIL B

2" STEEL ROLLER WITH 5-1/8" STEM AND 7/16" PUSHNUT AT EACH ROLLER LOCATION. 1/4" MAX BETWEEN PUSHNUT AND BRACKET OR HINGE



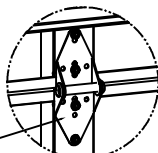
DETAIL C

14 GA WIDE BODY END HINGE TO ATTACH SECTIONS ONE AND TWO. 13 GA WIDE BODY END HINGE TO ATTACH REMAINING SECTIONS. FOR ALL, ATTACH WITH (4) 1/4-14x7/8" SELF DRILLING CRIMPITITE SCREWS



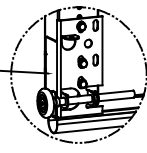
DETAIL D

14 GA WIDE BODY INTERMEDIATE HINGE ATTACHED WITH (4) 1/4-14x7/8" SELF DRILLING CRIMPITITE SCREWS



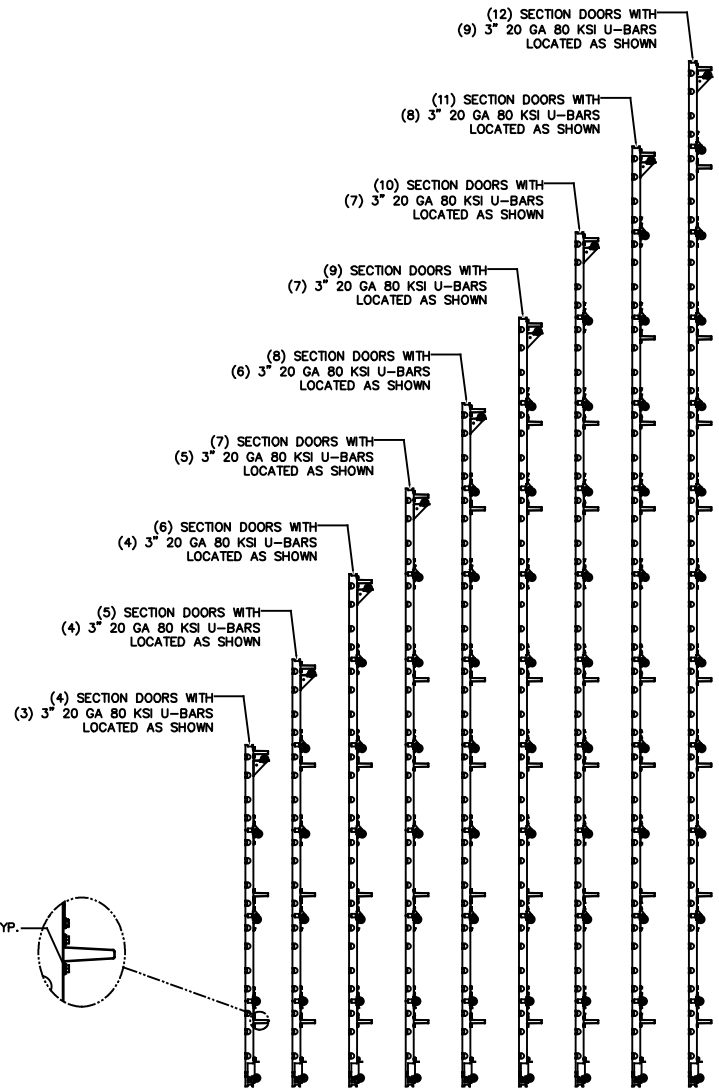
DETAIL E

12 GA BOTTOM BRACKET ATTACHED WITH (3) 1/4-14x7/8" SELF DRILLING CRIMPITITE SCREWS

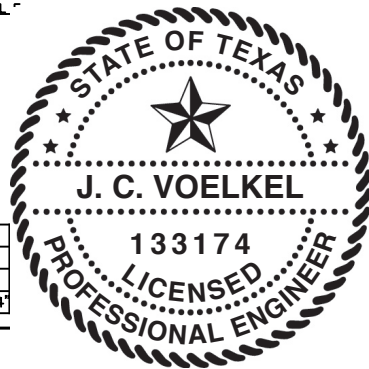


DETAIL F

ATTACH U-BARS WITH (2) 1/4-14x7/8" SELF DRILLING CRIMPITITE SCREWS AT ALL STILE LOCATIONS, TYP.

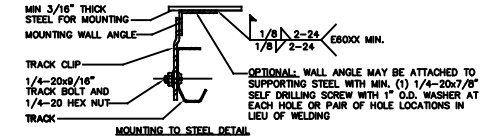
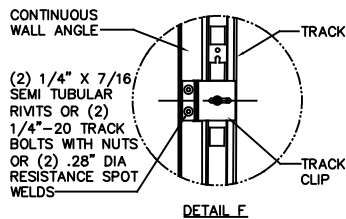
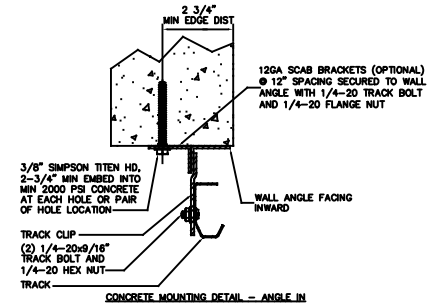
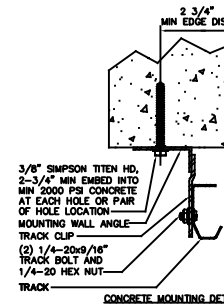
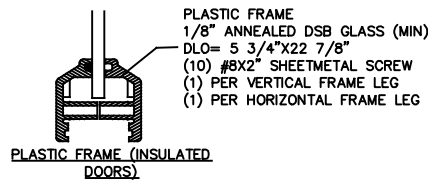
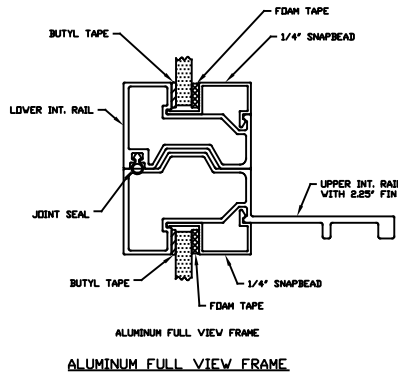
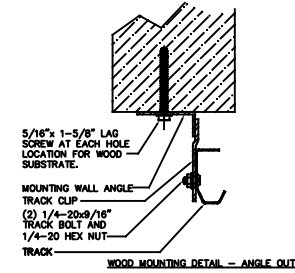
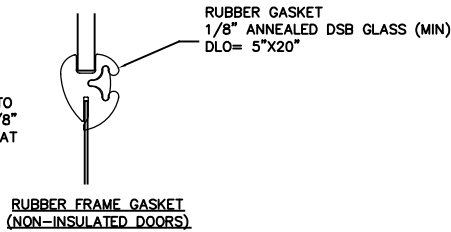
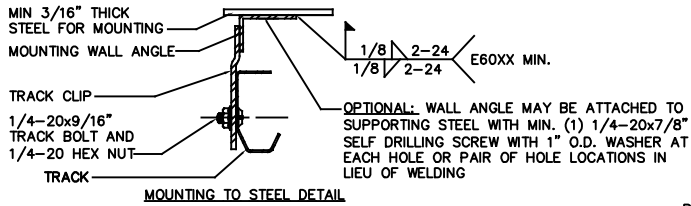


| STATIC PRESSURE RATINGS           | APPROVED SIZES          |
|-----------------------------------|-------------------------|
| DESIGN PRESSURE(PSF): +20.9/-23.6 | MAX WIDTH: 9'-4"        |
|                                   | MAX HEIGHT: 24'-1"      |
| IMPACT/CYCLIC RATED: NO           | MAX SECTION HEIGHT: 24' |

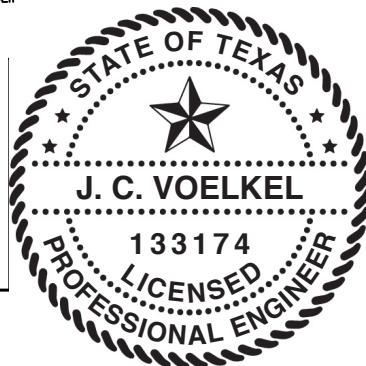


THE DRAWINGS AND ALL OTHER INFORMATION CONTAINED HEREIN ARE THE CONFIDENTIAL AND PROPRIETARY PROPERTY OF OVERHEAD DOOR CORPORATION AND ITS AFFILIATED COMPANIES. THIS DRAWING AND INFORMATION, IN WHOLE OR IN PART, MAY NOT BE COPIED IN ANY MANNER OR DISCLOSED TO ANYONE WITHOUT THE PRIOR WRITTEN CONSENT OF OVERHEAD DOOR CORPORATION. NO DISCLOSURE OF ANY OF THIS DRAWING OR INFORMATION IS INTENDED TO OPERATE AS A LICENSE OR AUTHORIZATION TO USE IT FOR ANY PURPOSE WITHOUT THE SPECIFIC WRITTEN CONSENT OF OVERHEAD DOOR CORPORATION.

| TOP SHEET NUMBER        |                      | HOLE DIAMETER |                 | FINISH                |           | MATERIAL  |  | DATE                      |  |
|-------------------------|----------------------|---------------|-----------------|-----------------------|-----------|---|--|---------------------------|--|
| UNDER .251 +.004/- .003 | WHOLE NUMBERS: ± .25 | N/A           | N/A             | LEVELVILLE, TENNESSEE | DATE      | DRAWING TITLE   |  | VINDLOAD OPTION CODE 2063 |  |
| OVER .500 +.008/- .003  | FRACTIONS: ± .1      | EA            | UNIT OF MEASURE |                       | 9/12/2020 | SERIES 421/423/427/429/434/436, 20.9/-23.6 PSF, 9'-4" MAX |  | DRAWING NUMBER            |  |
| ± 1/16                  | ANGLES: ± .5°        |               |                 |                       |           | D-411779  |  | SHEET 2 OF 3              |  |
| REF DWG                 | USED ON              |               |                 |                       |           | DRAWN BY: T CLARK   |  | CHECKED BY: J QIAN        |  |
|                         |                      |               |                 |                       |           | APPROVED BY: T CLARK                                      |  | DATE: 4/27/21             |  |



| STATIC PRESSURE RATINGS           | APPROVED SIZES          |
|-----------------------------------|-------------------------|
| DESIGN PRESSURE(PSF): +20.9/-23.6 | MAX WIDTH: 9'-4"        |
|                                   | MAX HEIGHT: 24'-1"      |
| IMPACT/CYCLIC RATED: NO           | MAX SECTION HEIGHT: 24' |



| THESE TRACKS AND THIS COVER BOARD ARE TO BE USED ONLY IN U.S. CUSTOMARY UNITS |                           | TOLERANCES UNLESS OTHERWISE SPECIFIED |       | FINISH          | The Genuine. The Original. LEVIELLE TEGE |   |
|---|---------------------------|---------------------------------------|-------|-----------------|--|---|
| HOLE DIAMETER   | UNDER .251 +.004/- .003   | WHOLE NUMBERS                         | ± .25 | N/A             | DATE                                     | DRAWING TITLE   |
|   | .251 TO .500 +.006/- .003 | FRACTIONS                             | ± .1  |                 | 9/12/2020                                | VINDLOAD OPTION CODE 2063                                 |
|   | OVER .500 +.008/- .003    | ANGLES                                | ± .03 |                 |  | SERIES 421/423/427/429/434/436, 40.9/-23.6 PSF, 9'-4" MAX |
| REF DWG   | USED ON                   |                                       |       | UNIT OF MEASURE | DESIGNED BY                              | DRAWING NUMBER  |
|   |                           |                                       |       | EA              | T CLARK                                  | D-411779  |
|   |                           |                                       |       |                 | CHECKED BY                               | SOLD  |
|   |                           |                                       |       |                 | J QIAN                                   | N/A   |
|   |                           |                                       |       |                 | APPROVED BY                              | SHEET 3 OF 3  |
|   |                           |                                       |       |                 | T CLARK                                  |   |
|   |                           |                                       |       |                 |  |   |