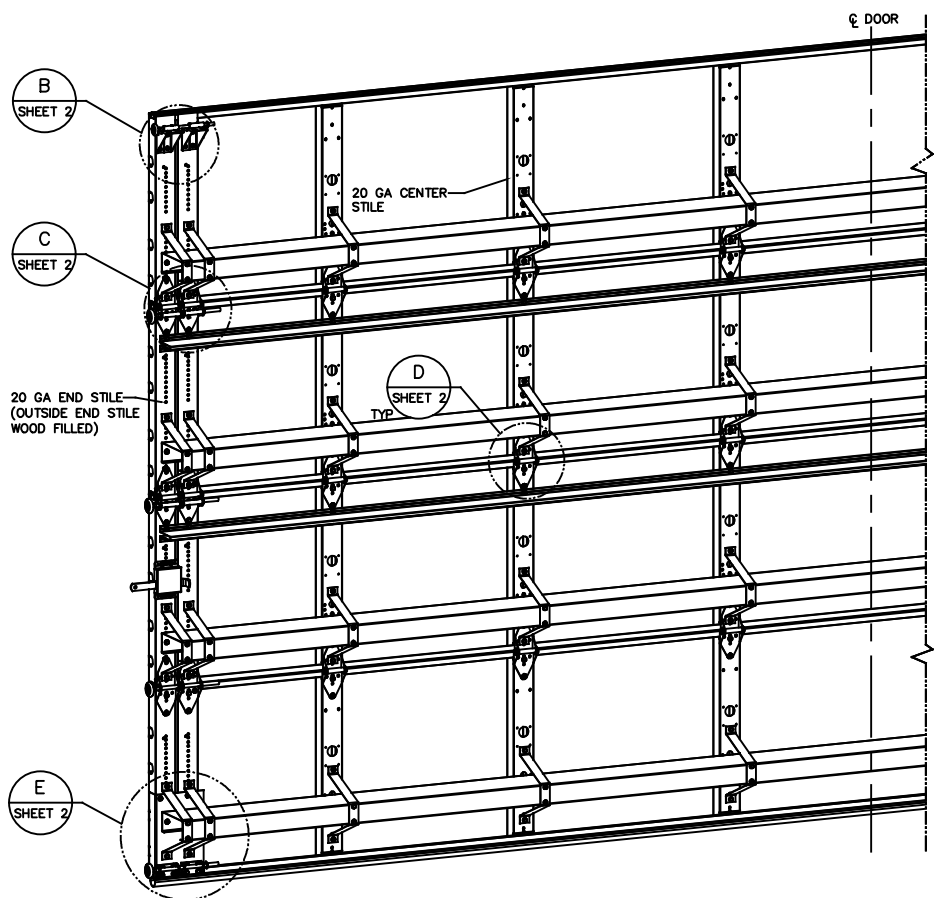
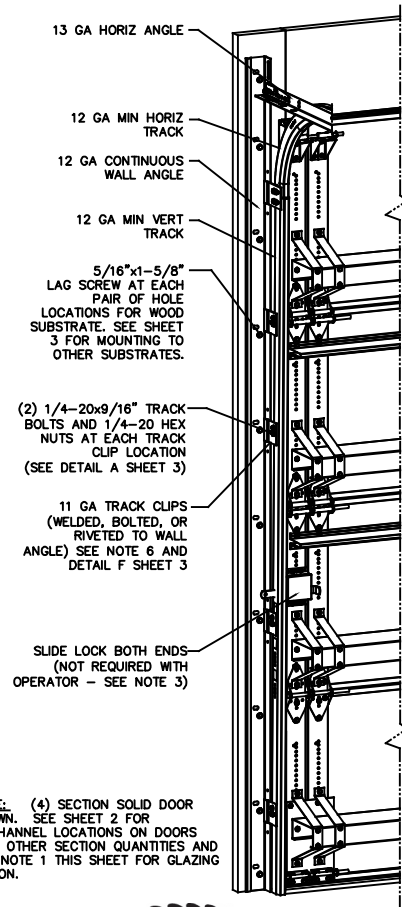


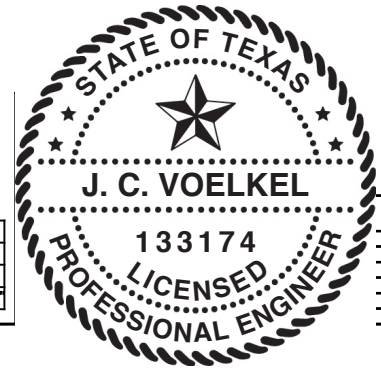
| REVISIONS | | | | |
|-----------|-----|-----------------|-----------|----------|
| OR | REV | DESCRIPTION | DATE | APPROVAL |
| WL005 | - | INITIAL DRAWING | 1/14/2021 | TLC |
| WL005 | - | DRAWING UPDATE | 5/25/21 | TLC |

- NOTES
- STANDARD GLAZING OPTION - .125" MINIMUM DSB GLAZING MEETS UNIFORM STATIC DESIGN PRESSURES SHOWN ON THIS DRAWING. GLAZING SHALL HAVE A MAXIMUM HEIGHT OF 6.70" AND A MAXIMUM LENGTH OF 24.00". GLAZING IS NOT IMPACT RESISTANT AND DOES NOT MEET THE REQUIREMENTS FOR WIND-BORNE DEBRIS REGIONS.
 - MINIMUM OF 1" OVERLAP ON BOTH JAMBS REQUIRED TO MEET NEGATIVE DESIGN PRESSURES.
 - SLIDE LOCKS OR OPERATOR REQUIRED.
 - SECTION STEEL TO HAVE THE FOLLOWING MINIMUM THICKNESS:
421, 423 - 20 GA
427, 429 - 24 GA
434, 436 - 25 GA
 - THE DESIGN OF THE SUPPORTING STRUCTURAL ELEMENTS SHALL BE THE RESPONSIBILITY OF THE PROFESSIONAL OF RECORD FOR THE BUILDING OR STRUCTURE AND IN ACCORDANCE WITH CURRENT BUILDING CODES FOR THE LOADS LISTED ON THIS DRAWING.
 - TRACK CLIPS SHALL BE LOCATED WITH CENTERLINE OF BOTTOM CLIP SPACED 10" MAX FROM BOTTOM OF TRACK AND REMAINING TRACK CLIPS SPACED AT 24" O.C. MAX. SPACING BETWEEN TOP TRACK CLIP AND SPLICE PLATE SHALL BE 30" O.C. MAX.
 - WHEN MOUNTING TO WOOD, DOOR JAMB TO BE MINIMUM 2x6 STRUCTURAL GRADE LUMBER. REFER TO JAMB CONNECTION SUPPLEMENT FOR ATTACHMENT TO SUPPORTING STRUCTURE.



NOTE: (4) SECTION SOLID DOOR SHOWN. SEE SHEET 2 FOR C-CHANNEL LOCATIONS ON DOORS WITH OTHER SECTION QUANTITIES AND SEE NOTE 1 THIS SHEET FOR GLAZING OPTION.

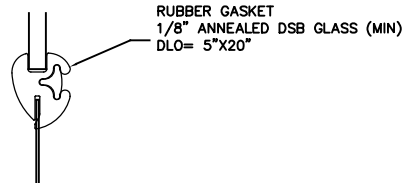
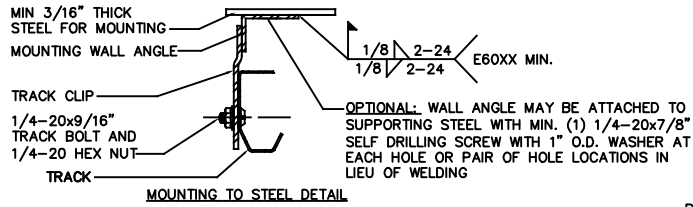
| SUPERIMPOSED DESIGN PRESSURE LOADS ON SUPPORTING STRUCTURE | | |
|--|-------------|----------------------------------|
| MAX DOOR WIDTH | DOOR HEIGHT | MAX UNIFORM LOAD EACH JAMB (PLF) |
| 24'-2" | ALL | +244.1/-274.3 |



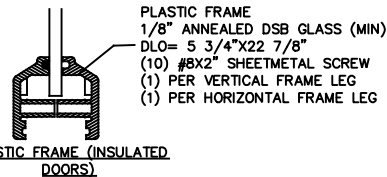
THE DOORS ARE DESIGNED AND MANUFACTURED TO COMPLY WITH THE 2018 IRC AND THE 2018 IBC.

| STATIC PRESSURE RATINGS | APPROVED SIZES |
|-----------------------------------|-------------------------|
| DESIGN PRESSURE(PSF): +20.2/-22.7 | MAX WIDTH: 24'-2" |
| | MAX HEIGHT: 24'-1" |
| IMPACT/CYCLIC RATED: NO | MAX SECTION HEIGHT: 24' |

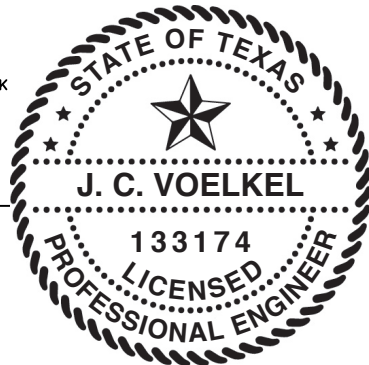
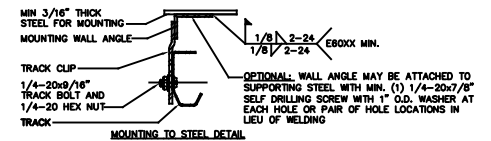
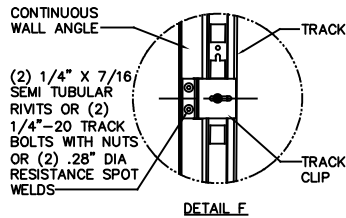
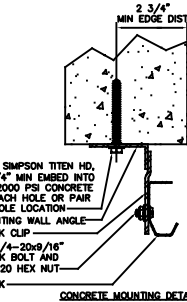
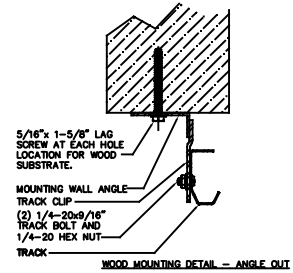
| THE DRAWINGS AND ALL OTHER INFORMATION CONTAINED HEREIN ARE THE CONFIDENTIAL AND PROPRIETARY PROPERTY OF OVERHEAD DOOR CORPORATION AND ITS AFFILIATED COMPANIES. THIS DRAWING AND INFORMATION, IN WHOLE OR IN PART, MAY NOT BE COPIED IN ANY MANNER OR DISCLOSED TO ANYONE WITHOUT THE PRIOR WRITTEN CONSENT OF OVERHEAD DOOR CORPORATION. NO DISCLOSURE OF ANY OF THIS DRAWING OR INFORMATION IS INTENDED TO OPERATE AS A LICENSE OR AUTHORIZATION TO USE IT FOR ANY PURPOSE WITHOUT THE SPECIFIC WRITTEN CONSENT OF OVERHEAD DOOR CORPORATION. | | | | | | | | | | |
|--|---------|--|--|--|--|--|--|--|--|--|
| REF DWG | USED ON | DRIVE TYPE AND THIS MODEL NUMBER ARE IN U.S. CUSTOMARY UNITS | DRIVE TYPE AND THIS MODEL NUMBER ARE IN U.S. CUSTOMARY UNITS | DRIVE TYPE AND THIS MODEL NUMBER ARE IN U.S. CUSTOMARY UNITS | DRIVE TYPE AND THIS MODEL NUMBER ARE IN U.S. CUSTOMARY UNITS | DRIVE TYPE AND THIS MODEL NUMBER ARE IN U.S. CUSTOMARY UNITS | DRIVE TYPE AND THIS MODEL NUMBER ARE IN U.S. CUSTOMARY UNITS | DRIVE TYPE AND THIS MODEL NUMBER ARE IN U.S. CUSTOMARY UNITS | DRIVE TYPE AND THIS MODEL NUMBER ARE IN U.S. CUSTOMARY UNITS | DRIVE TYPE AND THIS MODEL NUMBER ARE IN U.S. CUSTOMARY UNITS |
| | | | | | | | | | | |



RUBBER FRAME GASKET
(NON-INSULATED DOORS)



PLASTIC FRAME (INSULATED
DOORS)



J. CHRISTIAN VOELKEL, PE
312 N. NEW VARRINGTON ROAD, UNIT 1A
PENSACOLA, FL
FL PE 88229
TX PE 133174

| STATIC PRESSURE RATINGS | APPROVED SIZES |
|-----------------------------------|-------------------------|
| DESIGN PRESSURE(PSF): +20.2/-22.7 | MAX WIDTH: 24'-2" |
| IMPACT/CYCLIC RATED: NO | MAX HEIGHT: 24'-1" |
| | MAX SECTION HEIGHT: 24' |

| TOLERANCES UNLESS OTHERWISE SPECIFIED | | FINISH | THE ORIGINAL | DATE | DRAWING TITLE |
|---------------------------------------|----------------------|-----------------|-------------------|---------|--------------------------------|
| HOLE DIAMETER | WHOLE NUMBERS: ± .25 | N/A | LEWISVILLE, TEXAS | 1/14/21 | VINDLAD OPTION CODE 2050 |
| UNDER .251 +.004/- .003 | X ± .1 | | | | SERIES 421/423/427/429/434/436 |
| .251 TO .500 +.006/- .003 | .XX ± .03 | UNIT OF MEASURE | | | B.O.B./-22.7 PSF, 24'-2" MAX |
| OVER .500 +.008/- .003 | .XXX ± .010 | EA | | | DRAWING NUMBER |
| FRACTIONS | ANGLES: ± .5° | | | | D- 411802 |
| ± 1/16 | | | | | SCALE: N/A |
| REF DWG | USED ON | | | | SHEET 3 OF 3 |