

**NOTES:**

1. DOOR MUST OVERLAP JAMBS A MINIMUM OF 1" ON EACH SIDE OF OPENING.

2. SLIDE LOCK OR OPERATOR REQUIRED. LOW HEADROOM REQUIRES A LOCK ON BOTH SIDES.

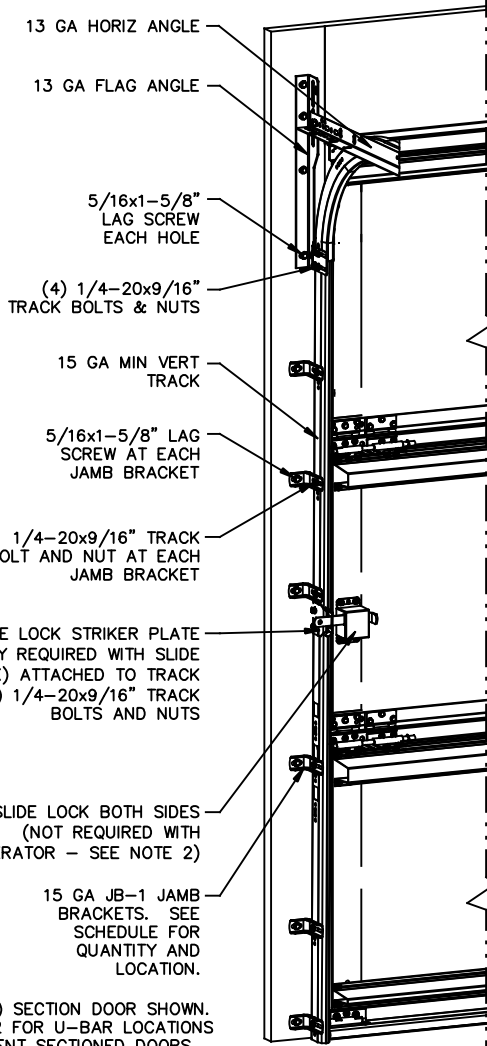
3. THE DESIGN OF THE SUPPORTING STRUCTURAL ELEMENTS SHALL BE THE RESPONSIBILITY OF THE PROFESSIONAL OF RECORD FOR THE BUILDING OR STRUCTURE AND IN ACCORDANCE WITH CURRENT BUILDING CODES FOR THE LOADS LISTED ON THIS DRAWING.

4. SECTION STEEL TO HAVE THE FOLLOWING MINIMUM THICKNESS:  
EXTERIOR - 27 GA  
INTERIOR - 30 GA

5. DOOR JAMB TO BE MINIMUM 2x6 STRUCTURAL GRADE LUMBER SOUTHERN PINE. REFER TO JAMB CONNECTION SUPPLEMENT FOR ATTACHMENT TO SUPPORTING STRUCTURE.

6. FOR LOW HEAD ROOM LIFT CONDITIONS, TOP BRACKET SHALL BE A LHR TOP BRACKET IN LIEU OF THE BRACKET SHOWN ON THIS DRAWING. SEE LHR, DETAIL A, SHEET 2.

7. FOR LOW HEAD ROOM APPLICATIONS, THE UPPERMOST JAMB BRACKET IS OMITTED EXCEPT ON DOORS < 7' TALL.



NOTE: (3) SECTION DOOR SHOWN. SEE PAGE 2 FOR U-BAR LOCATIONS FOR DIFFERENT SECTIONED DOORS.

JAMB BRACKET SCHEDULE			
DOOR HEIGHT	NO. OF SECTIONS	NO. OF JAMB BRACKETS (EACH JAMB)	LOCATION OF CENTERLINE OF JAMB BRACKETS MEASURED FROM BOTTOM OF TRACK (ALL DIMENSIONS ± 2")
7'-0"	3	6	2", 10", 26", 42", 53", 63"
8'-0"	4	8	2", 10", 26", 39", 48", 57", 66", 75"
> 8'-0"			SEE NOTE BELOW

NOTE: ALL DOORS GREATER THAN 8' IN HEIGHT REQUIRE USE OF CONTINUOUS WALL ANGLE. SEE SUPPLEMENT TRACK CHART FOR DETAILS.

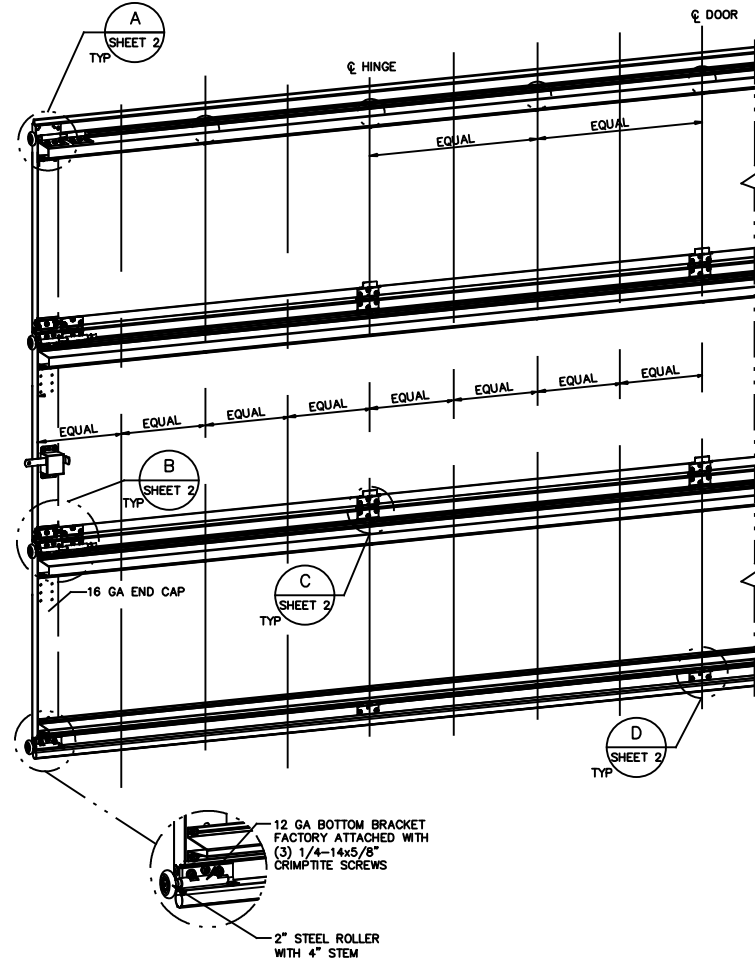
**SUPERIMPOSED DESIGN PRESSURE LOADS ON SUPPORTING STRUCTURE**

DOOR WIDTH	DOOR HEIGHT	UNIFORM LOAD EACH JAMB (PLF)
16'-2"	7'-0"	+316.9/-353.2
	8'-0"	+316.9/-353.2

PROFESSIONAL ENGINEER'S SEAL PROVIDED ONLY FOR VERIFICATION OF WINDLOAD CONSTRUCTION DETAILS.

JOHN E. SCATES, PE  
3121 FAIRGATE DR.  
CARROLLTON, TX 75007  
FL PE 51737 TX PE 56308/F-2203

FASTENERS AT AND MIDWAY BETWEEN ALL INTERMEDIATE HINGE LOCATIONS AND MIDWAY BETWEEN THOSE LOCATIONS. SEE NOTE SHEET 2



**REVISIONS**

- POO NEW DRAWING CREATED FOR WINDLOAD OPTIONS 8-25-16 GAC
- P01 ER 31281 REV NOMENCLATURE TO 1144 GRADE STEEL ROLLER 2-3-17 GAC

This door has been tested per ANSI/DASMA 108

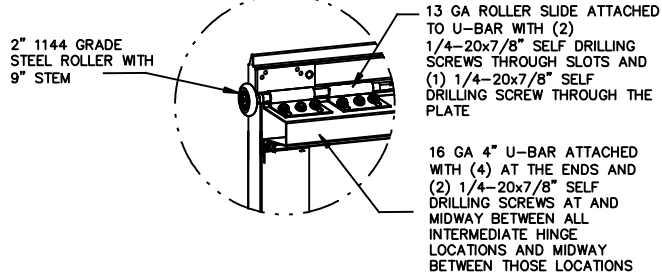
STATIC PRESSURE RATINGS		APPROVED SIZES		SCALE: N.T.S.		SIZE: A	
DESIGN (PSF):	+39.20/-43.70	MAX WIDTH:	16'-2"	DATE	8-25-16	NAME	GAC
IMPACT/CYCLIC RATED (YES/NO): NO		MAX HEIGHT:	14'-0"	DRAWN	8-25-16	CHECKED	DK
		MAX SECTION HEIGHT:	28"	SHEET 1 OF 2			
MODELS 300-309/5800				DRAWING PART NO. REV.			
WINDLOAD SPECIFICATION				411450		P01	

The Genuine. The Original.

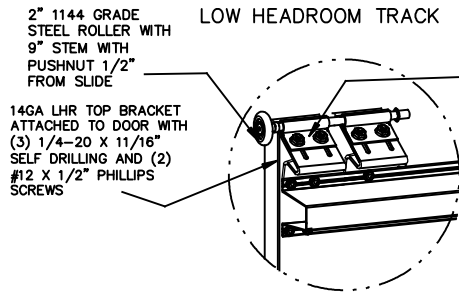


Lewisville, TX

STANDARD LIFT TRACK



LOW HEADROOM TRACK



U-BAR LOCATIONS (7) SECTION DOORS WITH (7) 4" 16 GA & (1) 3" 18 GA 80 KSI U-BARS LOCATED AS SHOWN (TOP BRACKET REMOVED FOR CLARITY)

(2) 15 GA HINGE LEAFS ATTACHED WITH (3) 1/4-14x5/8" CRIMPITTE SCREWS EACH

DETAIL A

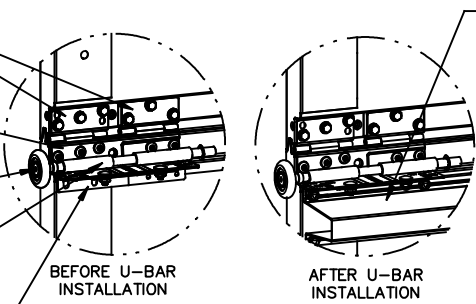
14 GA HINGE BASE FACTORY ATTACHED TO DOOR WITH (5) 1/4-14x5/8" CRIMPITTE SCREWS

2" 1144 GRADE STEEL ROLLER WITH 9" STEM WITH PUSHNUT 1/2" FROM SLIDE

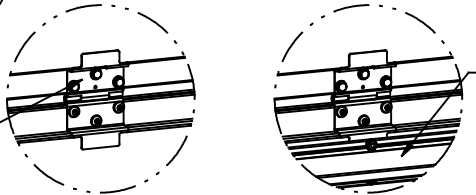
11 GA ROLLER CARRIERS (WELDED) ATTACHED TO HINGE BASE USING (2) 1/4-20x9/16" TRACK BOLTS AND NUTS EACH.

11 GA REINFORCING BRACKET ATTACHED TO HINGE BASE WITH (4) 1/4-20x9/16" TRACK BOLTS & NUTS

15 GA HINGE ATTACHED WITH (6) 1/4-14x5/8" CRIMPITTE SCREWS



DETAIL B



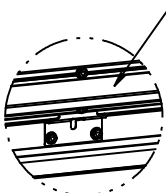
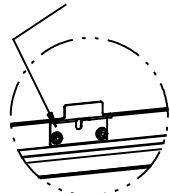
BEFORE U-BAR INSTALLATION

AFTER U-BAR INSTALLATION

DETAIL C

15 GA HINGE BRACKET ATTACHED WITH (2) 1/4-20x7/8" SELF DRILLING SCREWS

POSITION U-BAR OVER HINGE BRACKET AND ATTACH WITH (2) 1/4-20x7/8" SELF DRILLING SCREWS AS SHOWN



DETAIL D

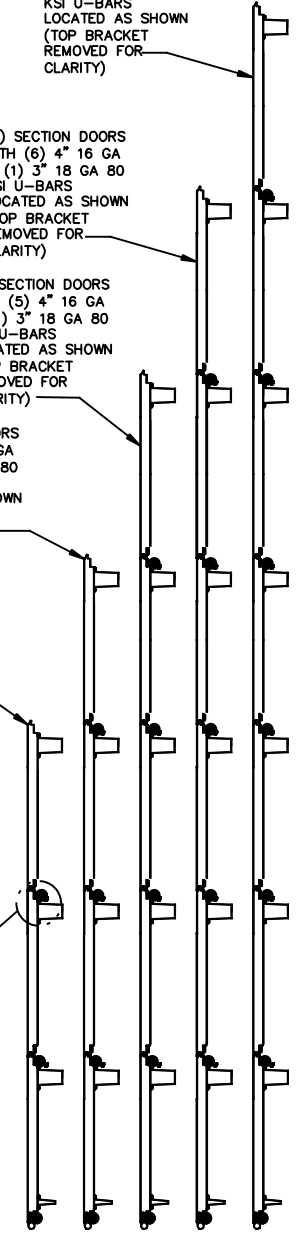
(6) SECTION DOORS WITH (6) 4" 16 GA & (1) 3" 18 GA 80 KSI U-BARS LOCATED AS SHOWN (TOP BRACKET REMOVED FOR CLARITY)

(5) SECTION DOORS WITH (5) 4" 16 GA & (1) 3" 18 GA 80 KSI U-BARS LOCATED AS SHOWN (TOP BRACKET REMOVED FOR CLARITY)

(4) SECTION DOORS WITH (4) 4" 16 GA & (1) 3" 18 GA 80 KSI U-BARS LOCATED AS SHOWN (TOP BRACKET REMOVED FOR CLARITY)

(3) SECTION DOORS WITH (3) 4" 16 GA & (1) 3" 18 GA 80 KSI U-BARS LOCATED AS SHOWN (TOP BRACKET REMOVED FOR CLARITY)

UNLESS NOTED OTHERWISE, ALL U-BARS SHALL BE ATTACHED WITH A MINIMUM OF (4) FASTENERS AT EACH END, (2) FASTENERS AT ALL INTERMEDIATE HINGE LOCATIONS, MIDWAY BETWEEN INTERMEDIATE HINGE LOCATIONS, AND MIDWAY BETWEEN THOSE MIDWAY LOCATIONS. (SEE DIAGRAM SHEET 1). ALL FASTENERS USED TO ATTACH U-BARS SHALL BE 1/4-20x7/8" SELF DRILLING.



STATIC PRESSURE RATINGS	APPROVED SIZES	SCALE: N.T.S.	SIZE: A
DESIGN (PSF): +39.20/-43.70	MAX WIDTH: 16'-2"	DATE	NAME
IMPACT/CYCLIC RATED (YES/NO): NO	MAX HEIGHT: 14'-0"	DRAWN	GAC
	MAX SECTION HEIGHT: 28"	CHECKED	DK
MODELS 300-309/5800		SHEET 2 OF 2	
WINDLOAD SPECIFICATION		DRAWING PART NO.	REV.
		411450	P01