

CLOPAY CANYON RIDGE SERIES: CAN2nn-XX, COACHMAN SERIES: CGUnn, CXUnn
 HOLMES GLENMOOR SERIES: GLN2nn-XX, SETTLERS SERIES: SXUnn
 IDEAL CARRIAGE HOUSE CUSTOM WOOD-LOOK SERIES: MWL2nn-XX, AFFINITY SERIES AGUnn
MODEL DESIGNATION NOTE 1: "nn" REPRESENTS THE ARRANGEMENT OF THE DECORATIVE OVERLAYS.
 COACHMAN-TYPES DOORS ARE 2-5/8" THICK.
MODEL DESIGNATION NOTE 2: "XX" REPRESENTS THE TYPE OF CLADDING. IF "XX" IS "MN" "PN" "CN" OR "NC" THE DOOR HAS EITHER CLADDING OR OVERLAYS AND IS 2-1/2" THICK OVERALL. ANY OTHER VALUE FOR "XX" INDICATES THAT THE DOOR HAS CLADDING AND OVERLAYS ON THE 2" BASE DOUBLE-SKIN INSULATED DOOR AND IS 3" THICK OVERALL.

SHEET:
1 OF 4

REVISIONS					
REV. NO.	ZONE:	DATE:	ECN NO.	APPVD:	DESCRIPTION
04	-	9/1/20	-	SH	UPDATED TITLE BLOCK AND ADDED IBC/IRC COMPLIANCE STATEMENT

OPTIONAL GLAZING SHALL BE IMPACT RESISTANT GLAZING. MAXIMUM GLAZING SIZE (DLO) IS 39"x15".
 GLAZING MAY BE SHORT-PANEL (NOT SHOWN) OR LONG-PANEL (SHOWN). SEE SECTION B-B FOR DETAILS.
 GLAZING MAY BE INSTALLED IN TOP SECTION (SHOWN) OR INTERMEDIATE SECTION (NOT SHOWN).
 SEE SHEET 4 FOR DETAILS.

(1) 20 GA. BACKER PLATE AT EACH INTERMEDIATE HINGE LOCATION. BACKER PLATES ATTACHED WITH DOUBLE-SIDED ACRYLIC ADHESIVE TO BACK OF DOOR.

(1) 12 GA. GALV. STEEL TOP ROLLER BRACKET. SEE SHEET 2 FOR DETAILS.

16 GA. MIN. GALV. STEEL END STILES.

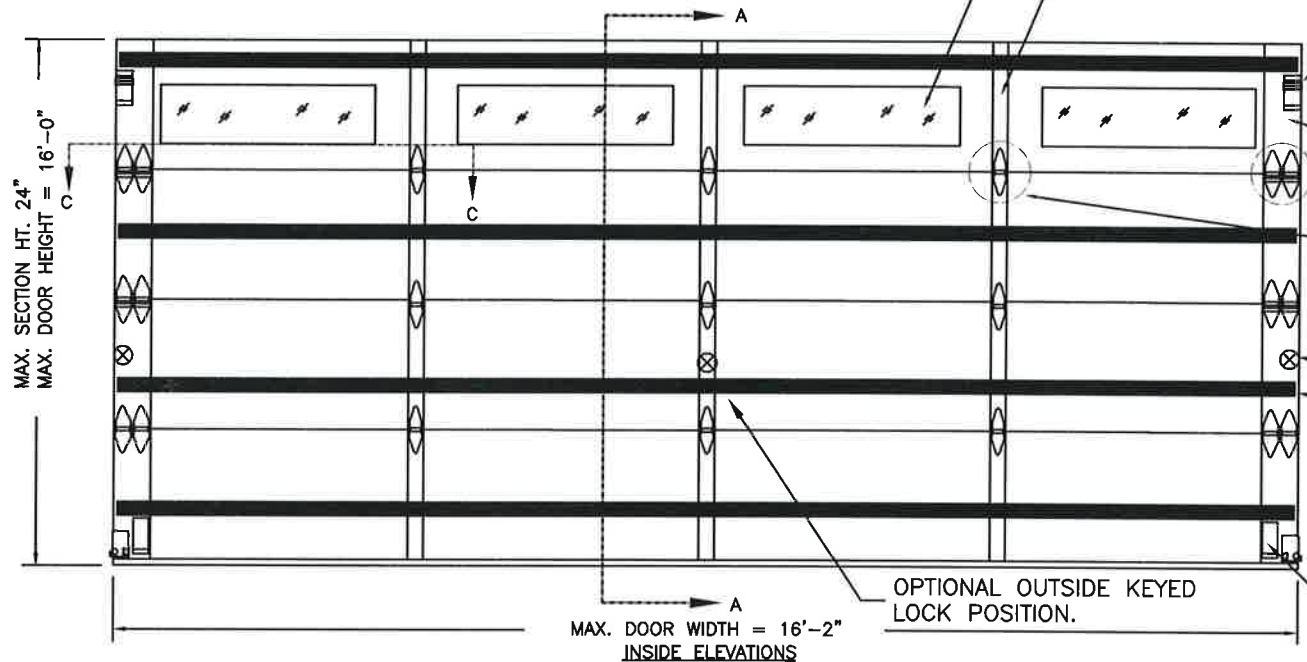
VIEW "B"
VIEW "C"

TWO POINT LOCKING INTO TRACK.

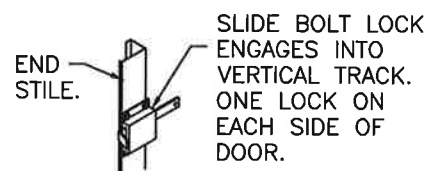
(1) T-STRUT PER SECTION.

OPTIONAL OUTSIDE KEYED LOCK POSITION.

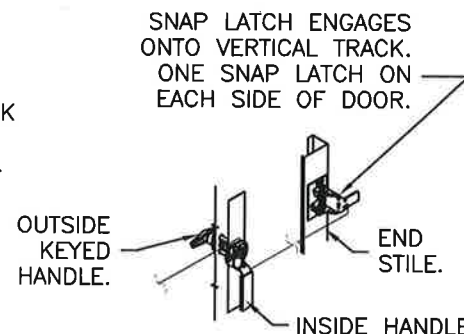
BRACKET USED FOR BOTTOM DOUBLE END STILE.



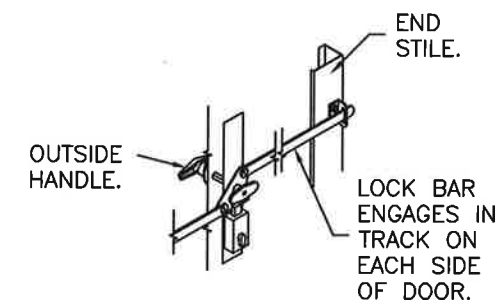
DOOR HEIGHT	# OF SECTIONS
UP TO 8'0"	4
8'3" TO 10'0"	5
10'3" TO 12'0"	6
12'3" TO 14'0"	7
14'3" TO 16'0"	8
MAX SECTION HEIGHT: 24'	



INSIDE SLIDE BOLT LOCK OPTION.



OUTSIDE KEYED LOCK WITH SNAP LATCH LOCK OPTION.



OUTSIDE KEYED LOCK WITH LOCK BAR LOCKING.

THIS PRODUCT COMPLIES WITH THE 2018 IBC/IRC.

DESIGN LOADS: +38.0 P.S.F. & -42.0 P.S.F.
 TEST LOADS: +57.0 P.S.F. & -63.0 P.S.F.

MANUFACTURING PRODUCT CODE
 COACHMAN: DSIUD-1M479
 CANYON RIDGE: DSIUD-1K479
 PART NO.: N/A

Unless Stated Otherwise
 TOLERANCES are
 .0 = ±.031
 .00 = ±.015
 .000 = ±.005
 .0000 = ±.001
 Degrees = ±1/2"
 Unless Stated Otherwise
 DIMENSIONS ARE IN INCHES.

Glopay CORPORATION
 8585 Duke Boulevard
 Mason, OH 45040 USA
 Tel. No. 513-770-4800
 Fax No. 513-770-4853

WINDLOAD RATING
W6 DP38T
 DESCRIPTION: CANYON RIDGE / COACHMAN INTELICORE W6 16'2"W
 DRAWN BY: SH DATE: 05/14/14 SCALE: NTS DWG. B
 CHECKED BY: DATE: SHEET 1 OF 4 SIZE B
 DWG. NO.: 104932 VER: TDI

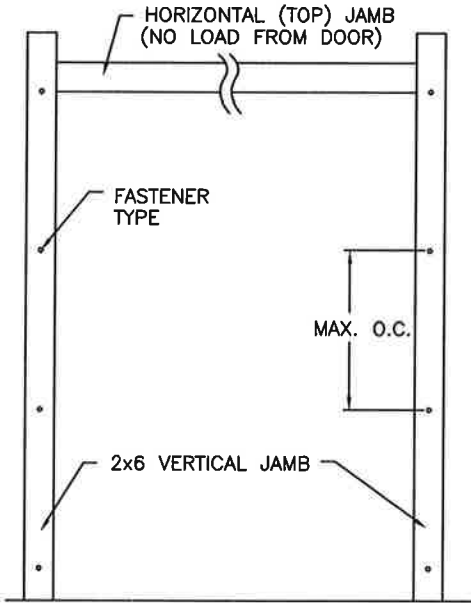


DESIGN ENGINEER
 MARK WESTERFIELD, P.E.
 FLORIDA P.E. #48495, NC P.E. #23832, TEXAS P.E. #91513

CLOPAY CANYON RIDGE SERIES: CAN2nn-XX, COACHMAN SERIES: CGUnn, CXUnn
 HOLMES GLENMOOR SERIES: GLN2nn-XX, SETTLERS SERIES: SXUnn
 IDEAL CARRIAGE HOUSE CUSTOM WOOD-LOOK SERIES: MWL2nn-XX, AFFINITY SERIES AGUnn
MODEL DESIGNATION NOTE 1: "nn" REPRESENTS THE ARRANGEMENT OF THE DECORATIVE OVERLAYS.
 COACHMAN-TYPES DOORS ARE 2-5/8" THICK.
MODEL DESIGNATION NOTE 2: "xx" REPRESENTS THE TYPE OF CLADDING. IF "xx" IS "MN" "PN" "CN" OR "NC" THE DOOR HAS EITHER CLADDING OR OVERLAYS AND IS 2-1/2" THICK OVERALL. ANY OTHER VALUE FOR "xx" INDICATES THAT THE DOOR HAS CLADDING AND OVERLAYS ON THE 2" BASE DOUBLE-SKIN INSULATED DOOR AND IS 3" THICK OVERALL.

SHEET:
2 OF 4

REVISIONS					
REV. NO.	ZONE	DATE	ECN NO.	APPVD:	DESCRIPTION
04	-	-	-	-	SEE REVISION HISTORY ON SHEET ONE.



JAMB TO SUPPORTING STRUCTURE ATTACHMENT

- NOTES:**
1. ALL THE LOAD FROM THE DOOR IS TRANSFERRED TO THE TRACK AND THEN FROM THE TRACK TO THE 2x6 VERTICAL SYP (GRADE #2 OR BETTER) JAMBS. NO LOAD FROM THE DOOR IS TRANSFERRED TO THE HORIZONTAL (TOP) JAMB.
 2. EACH VERTICAL JAMB SEES A MAXIMUM DESIGN LOAD OF +304 LB & -336 LB. PER LINEAR FOOT OF JAMB.
 3. ALL JAMB FASTENERS MAY BE (BUT ARE NOT REQUIRED TO BE) COUNTERSUNK TO PROVIDE A FLUSH MOUNTING SURFACE.
 4. A 1/3 STRESS INCREASE FOR WIND LOAD WAS NOT USED IN THE CALCULATION OF ALLOWABLE LOADS FOR ANCHORS AND FASTENERS FOR STEEL, CONCRETE AND MASONRY.

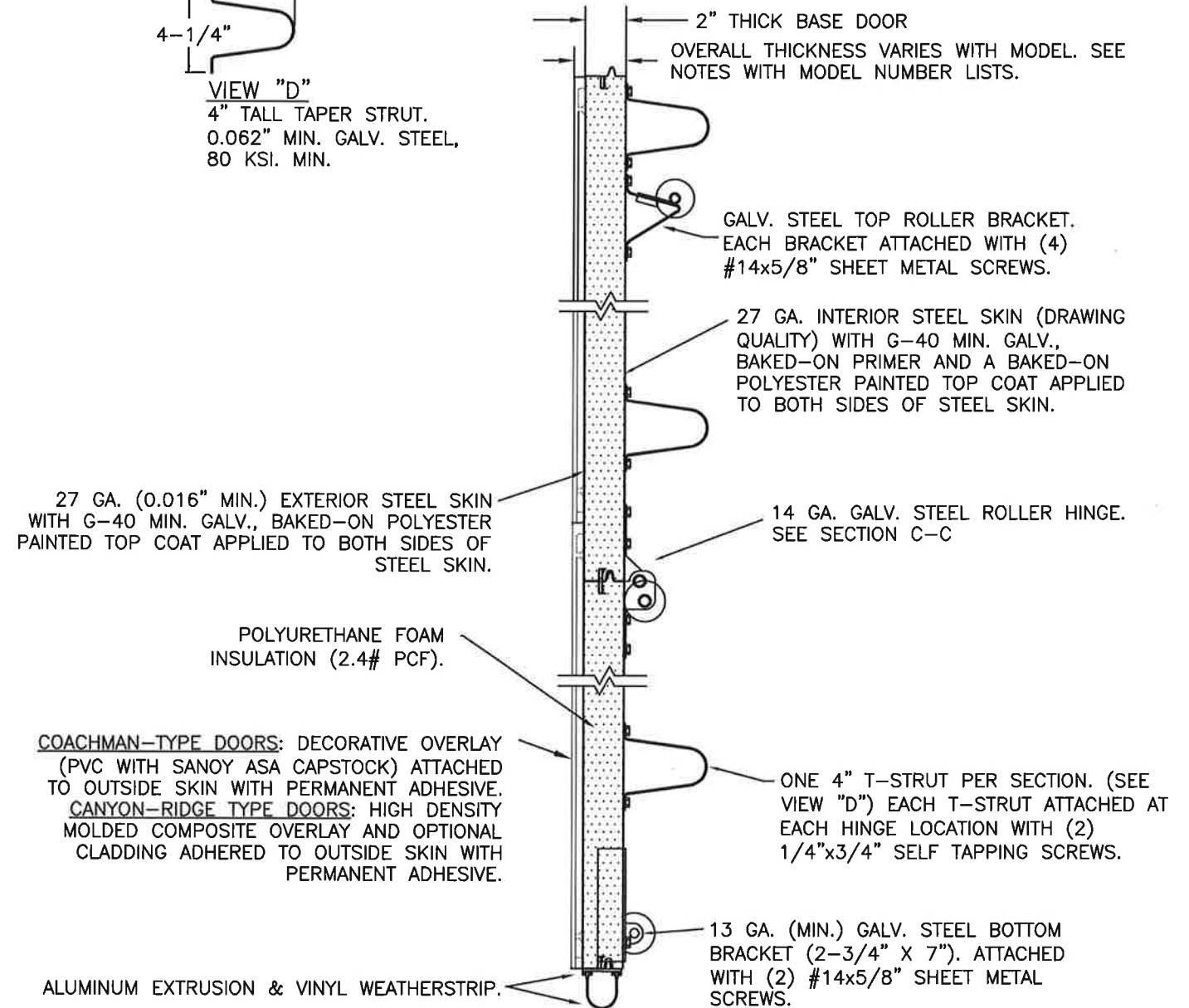
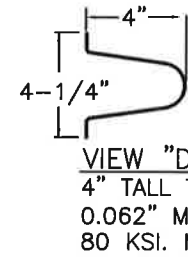
PREPARATION OF JAMBS BY OTHERS

NOTE: THE DESIGN OF THE SUPPORTING STRUCTURAL ELEMENTS SHALL BE THE RESPONSIBILITY OF THE PROFESSIONAL OF RECORD FOR THE BUILDING OR STRUCTURE AND IN ACCORDANCE WITH CURRENT BUILDING CODES FOR THE LOADS LISTED ON THIS DRAWING.

2x6 JAMB TO SUPPORTING STRUCTURE ATTACHMENT
(NOT TO BE USED FOR ATTACHMENT OF TRACK ANGLE TO 2x6 VERTICAL JAMBS OR SUPPORTING STRUCTURE)

BUILDING TYPE	FASTENER TYPE	MAXIMUM ON-CENTER DISTANCE BETWEEN FASTENERS*	STEEL WASHERS REQUIRED
HOLLOW CMU BLOCK WALL	1/4" x 1-1/4" MIN. EMBED ULTRACON CONCRETE ANCHOR	5 1/2'	1" O.D.
GROUT-FILLED CMU BLOCK	1/4" x 1-1/4" MIN. EMBED ULTRACON CONCRETE ANCHOR	9'	1" O.D.
2000 PSI MIN. CONCRETE	1/4" x 1" MIN. EMBED ULTRACON CONCRETE ANCHOR	7 3/4'	1" O.D.
2000 PSI MIN. CONCRETE	1/4" x 1" MIN. EMBED TAPCON CONCRETE ANCHOR	7 1/4'	1" O.D.
2000 PSI MIN. CONCRETE	3/8" X 1-3/4" MIN. EMBED WEJ-IT ANKR TITE SLEEVE ANCHOR	16 1/2'	INCLUDED
4000 PSI MIN. CONCRETE	3/8" X 1-3/4" MIN. EMBED WEJ-IT ANKR TITE SLEEVE ANCHOR	24'	INCLUDED
WOOD FRAME (SYP 0.55 SG)	1/2" x 3" LAG SCREW (ASTM A307, GRADE A) 1-5/8" EMBED INTO STRUCTURE	17 3/4'	1" O.D.

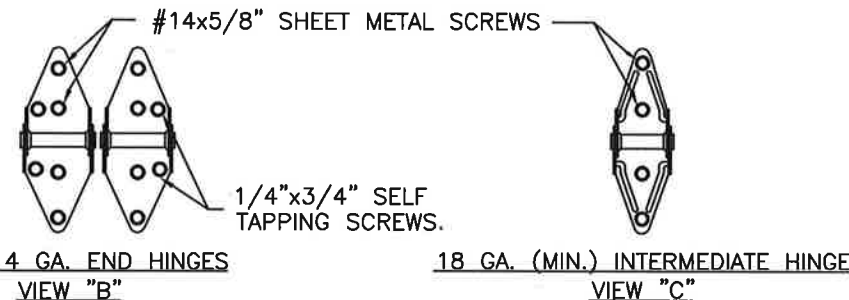
* FIRST (BOTTOM) ANCHOR STARTING AT NO MORE THAN HALF OF THE MAXIMUM ON-CENTER DISTANCE. HIGHEST ANCHOR INSTALLED AT LEAST AS HIGH AS THE DOOR OPENING.
 CLOPAY DOES NOT SUPPLY JAMB ATTACHMENT FASTENERS.
 MINIMUM DISTANCE BETWEEN CENTER OF ANCHOR AND EDGE OF CONCRETE BLOCK: 2-1/2", EXCLUDING STUCCO THICKNESS.



SECTION A-A (SIDE VIEW)



DESIGN ENGINEER
 MARK WESTERFIELD, P.E.
 FLORIDA P.E. #48495, NC P.E. #23832, TEXAS P.E. #91513



DESIGN LOADS: +38.0 P.S.F. & -42.0 P.S.F.
 TEST LOADS: +57.0 P.S.F. & -63.0 P.S.F.

Unless Stated Otherwise
 TOLERANCES are
 .0 = ±.031
 .00 = ±.015
 .000 = ±.005
 .0000 = ±.001
 Degrees = ±1/2"
 Unless Stated Otherwise
 DIMENSIONS ARE IN INCHES.

Clopay CORPORATION
 8585 Duke Boulevard
 Mason, OH 45040 USA
 Tel. No. 513-770-4800
 Fax No. 513-770-4853

DESCRIPTION: CANYON RIDGE / COACHMAN INTELLICORE W6 16'2"W
 DRAWN BY: SH DATE: 05/14/14 SCALE: NTS DWG. SIZE B
 CHECKED BY: DATE: SHEET 2 OF 4
 DWG. NO.: 104932 VER: TDI

MANUFACTURING PRODUCT CODE COACHMAN: DSIUD-1M479 CANYON RIDGE: DSIUD-1K479	WINDLOAD RATING W6 DP38T
PART NO.: N/A	

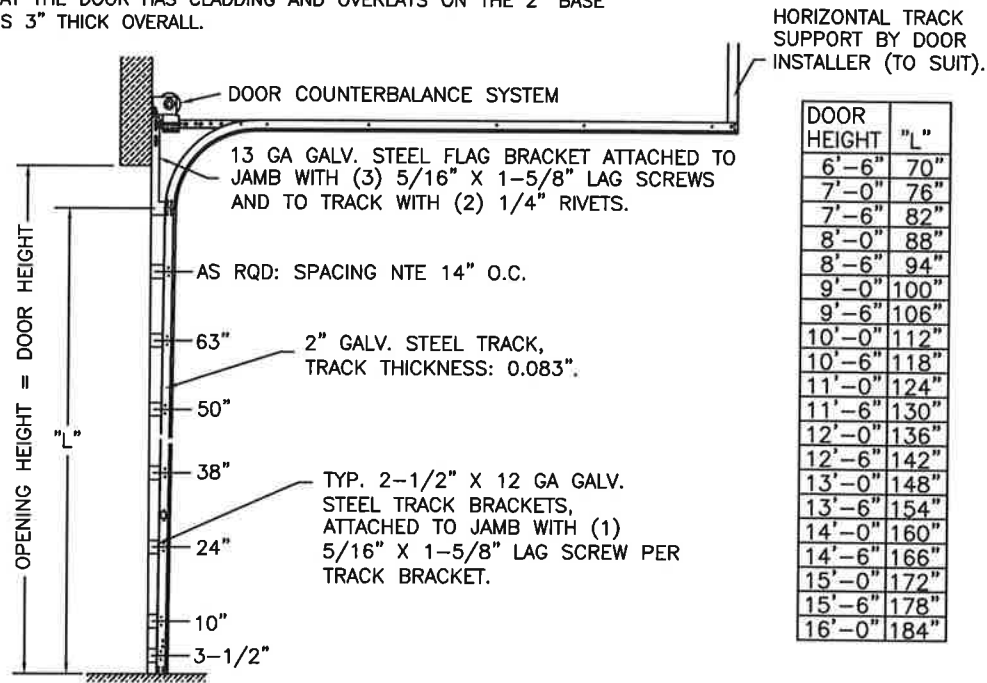
CLOPAY CANYON RIDGE SERIES: CAN2nn-XX, COACHMAN SERIES: CGUnn, CXUnn
 HOLMES GLENMOOR SERIES: GLN2nn-XX, SETTLERS SERIES: SXUnn
 IDEAL CARRIAGE HOUSE CUSTOM WOOD-LOOK SERIES: MWL2nn-XX, AFFINITY SERIES AGUnn
MODEL DESIGNATION NOTE 1: "nn" REPRESENTS THE ARRANGEMENT OF THE DECORATIVE OVERLAYS.
 COACHMAN-TYPES DOORS ARE 2-5/8" THICK.
MODEL DESIGNATION NOTE 2: "XX" REPRESENTS THE TYPE OF CLADDING. IF "XX" IS "MN" "PN" "CN" OR "NC" THE DOOR HAS EITHER CLADDING OR OVERLAYS AND IS 2-1/2" THICK OVERALL. ANY OTHER VALUE FOR "XX" INDICATES THAT THE DOOR HAS CLADDING AND OVERLAYS ON THE 2" BASE DOUBLE-SKIN INSULATED DOOR AND IS 3" THICK OVERALL.

SHEET:
3 OF 4

REVISIONS					DESCRIPTION
REV. NO.	ZONE	DATE	ECN NO.	APPVD.	
04	-	-	-	-	SEE REVISION HISTORY ON SHEET ONE.

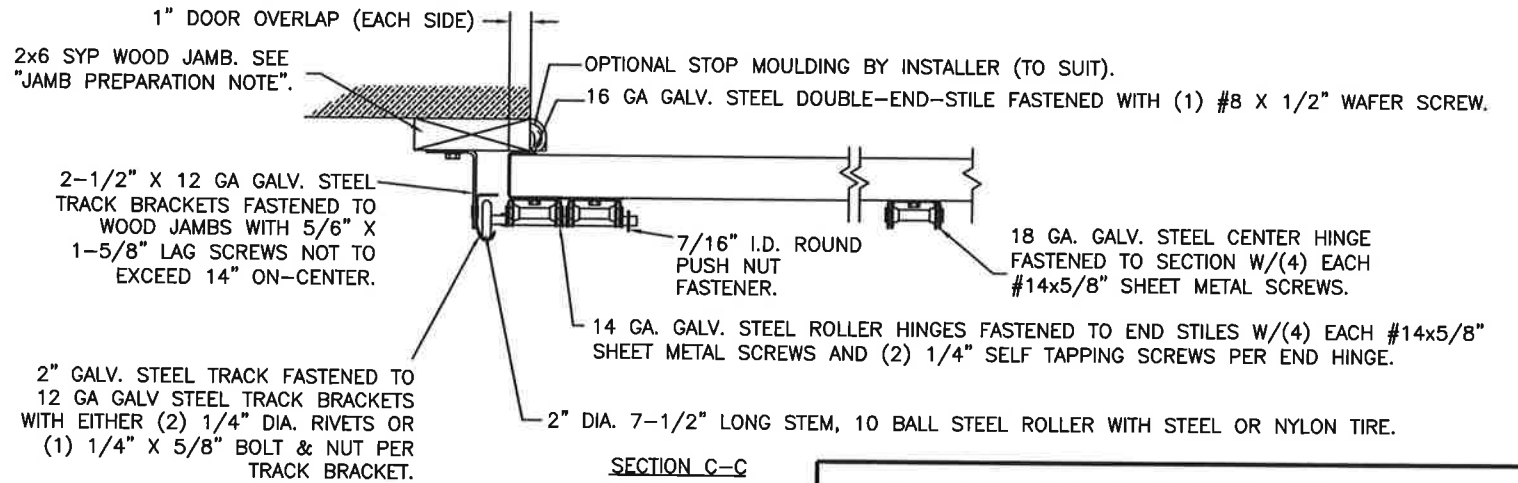
2" TRACK CONFIGURATION.

NOTE: TRACK CONFIGURATION ABOVE THE DOOR OPENING DOES NOT AFFECT THE WIND LOAD RATING OF THIS DOOR.



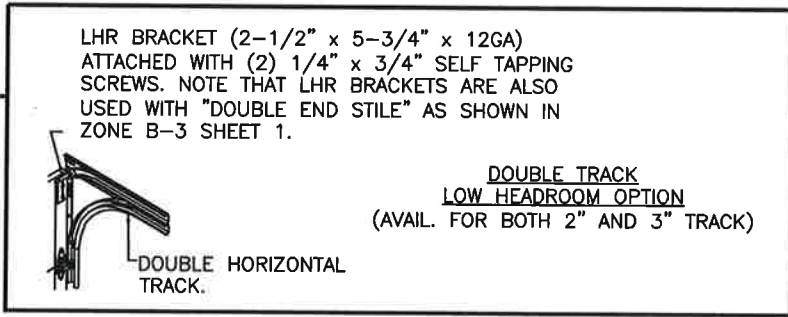
DOOR HEIGHT	"L"
6'-6"	70"
7'-0"	76"
7'-6"	82"
8'-0"	88"
8'-6"	94"
9'-0"	100"
9'-6"	106"
10'-0"	112"
10'-6"	118"
11'-0"	124"
11'-6"	130"
12'-0"	136"
12'-6"	142"
13'-0"	148"
13'-6"	154"
14'-0"	160"
14'-6"	166"
15'-0"	172"
15'-6"	178"
16'-0"	184"

JAMB CONFIGURATION FOR 2" TRACK.



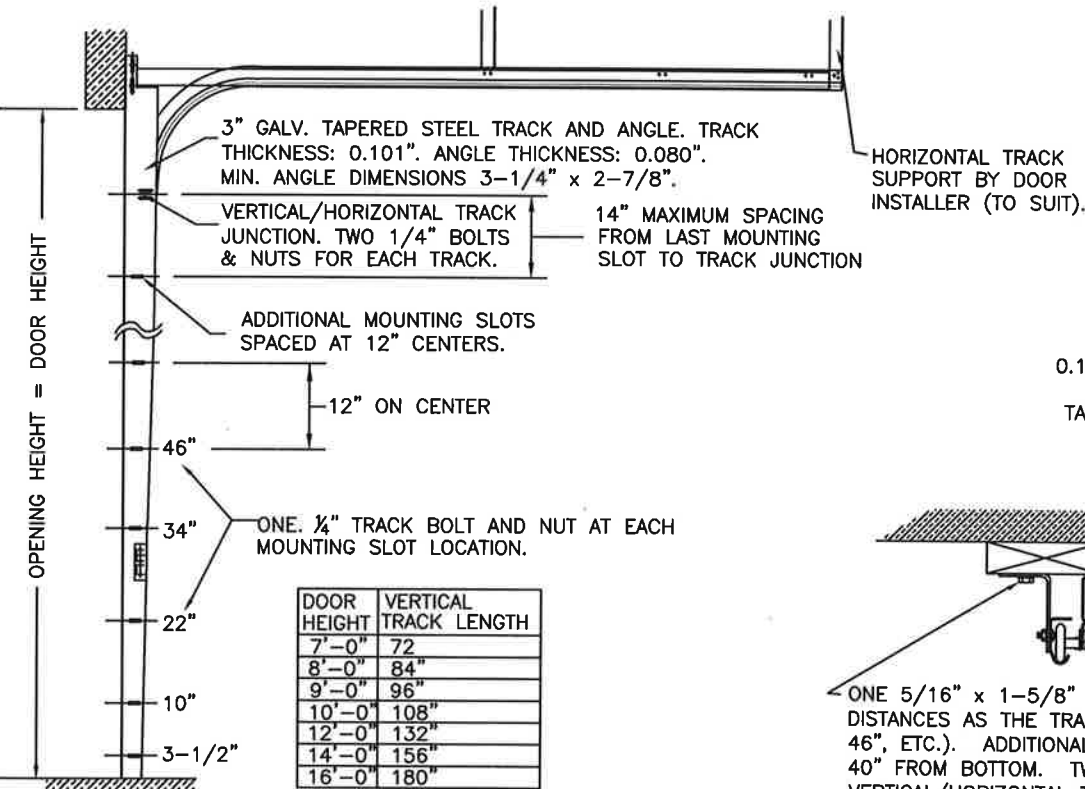
SECTION C-C

PREPARATION OF JAMBS BY OTHERS.



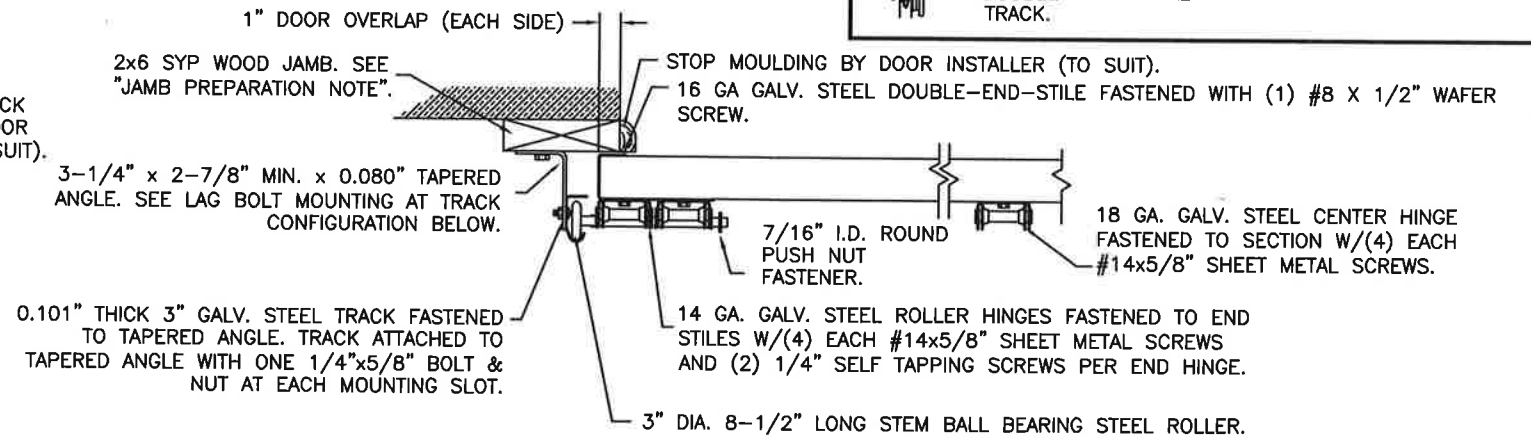
3" TRACK CONFIGURATION.

NOTE: TRACK CONFIGURATION ABOVE THE DOOR OPENING DOES NOT AFFECT THE WIND LOAD RATING OF THIS DOOR.



DOOR HEIGHT	VERTICAL TRACK LENGTH
7'-0"	72"
8'-0"	84"
9'-0"	96"
10'-0"	108"
12'-0"	132"
14'-0"	156"
16'-0"	180"

JAMB CONFIGURATION FOR 3" TRACK.



SECTION C-C

PREPARATION OF JAMBS BY OTHERS.

DESIGN LOADS: +38.0 P.S.F. & -42.0 P.S.F.
 TEST LOADS: +57.0 P.S.F. & -63.0 P.S.F.

Unless Stated Otherwise
TOLERANCES are
 .0 = ±.031
 .00 = ±.015
 .000 = ±.005
 .0000 = ±.001
 Degrees = ±1/2"
 Unless Stated Otherwise
 DIMENSIONS ARE IN INCHES.

Glopay CORPORATION
 8585 Duke Boulevard
 Mason, OH 45040 USA
 Tel. No. 513-770-4800
 Fax No. 513-770-4853

DESCRIPTION: CANYON RIDGE / COACHMAN INTELICORE W6 16'2"W
 DRAWN BY: SH DATE: 05/14/14 SCALE: NTS
 CHECKED BY: DATE: SHEET 3 OF 4
 DWG. NO.: 104932

MANUFACTURING PRODUCT CODE
 COACHMAN: DSIUD-1M479
 CANYON RIDGE: DSIUD-1K479
 PART NO.: N/A

WINDLOAD RATING
W6 DP38T

VER: TDI

DESIGN ENGINEER
 MARK WESTERFIELD, P.E.
 FLORIDA P.E. #48495, NC P.E. #23832, TEXAS P.E. #91513

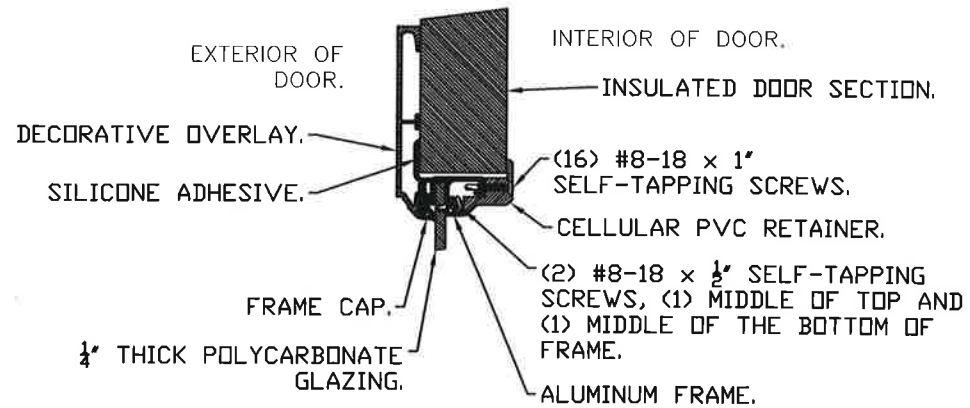
CLOPAY CANYON RIDGE SERIES: CAN2nn-XX, COACHMAN SERIES: CGUnn, CXUnn
 HOLMES GLENMOOR SERIES: GLN2nn-XX, SETTLERS SERIES: SXUnn
 IDEAL CARRIAGE HOUSE CUSTOM WOOD-LOOK SERIES: MWL2nn-XX, AFFINITY SERIES AGUnn
MODEL DESIGNATION NOTE 1: "nn" REPRESENTS THE ARRANGEMENT OF THE DECORATIVE OVERLAYS.
 COACHMAN-TYPES DOORS ARE 2-5/8" THICK.
MODEL DESIGNATION NOTE 2: "XX" REPRESENTS THE TYPE OF CLADDING. IF "XX" IS "MN" "PN" "CN" OR "NC" THE DOOR HAS EITHER CLADDING OR OVERLAYS AND IS 2-1/2" THICK OVERALL. ANY OTHER VALUE FOR "XX" INDICATES THAT THE DOOR HAS CLADDING AND OVERLAYS ON THE 2" BASE DOUBLE-SKIN INSULATED DOOR AND IS 3" THICK OVERALL.

SHEET:
4 OF 4

REVISIONS					
REV. NO.	ZONE	DATE	ECN NO.	APPVD:	DESCRIPTION
04	-	-	-	-	SEE REVISION HISTORY ON SHEET ONE.

IMPACT-RESISTANT CONSTRUCTION:
 SOLID DOORS (NO GLAZING) OR DOORS WITH OPTIONAL IMPACT-RESISTANT GLAZING ARE IMPACT-RESISTANT. OPTIONAL IMPACT RESISTANT ASSEMBLY CONSISTS OF ALUMINUM FRONT FRAME AND SABIC IP LEXAN 9034 (VERSIONS ALSO APPROVED: MR10, 9030, 90318, 90316, 90317, 90311, 90314, 90355) OR BAYER MAKROLON GP (VERSIONS ALSO APPROVED: SL, AR, 15), APPROVED CC1 PLASTICS IN ACCORDANCE WITH IBC/FBC 2606 AND APPROVED C1 PLASTICS IN ACCORDANCE WITH FBC 2612. THE ENTIRE DOOR ASSEMBLY INSTALLED IN COMPLIANCE WITH THIS SECTION MEETS THE WIND LOAD REQUIREMENTS OF THE FLORIDA BUILDING CODE AND INTERNATIONAL BUILDING CODE AND IS LARGE- AND SMALL-MISSILE IMPACT RESISTANT.

SECTION B-B (IMPACT-RESISTANT GLAZING OPTION)



DESIGN ENGINEER
 MARK WESTERFIELD, P.E.
 FLORIDA P.E. #48495, NC P.E. #23832, TEXAS P.E. #91513

DESIGN LOADS: +38.0 P.S.F. & -42.0 P.S.F.
 TEST LOADS: +57.0 P.S.F. & -63.0 P.S.F.

Unless Stated Otherwise
 TOLERANCES are
 .0 = ±.031
 .00 = ±.015
 .000 = ±.005
 .0000 = ±.001
 Degrees = ±1/2'
 Unless Stated Otherwise
 DIMENSIONS ARE IN INCHES.

Clopay
 CORPORATION
 8585 Duke Boulevard
 Mason, OH 45040 USA
 Tel. No. 513-770-4800
 Fax No. 513-770-4853

MANUFACTURING PRODUCT CODE
 COACHMAN: DSIUD-1M479
 CANYON RIDGE: DSIUD-1K479
 PART NO.: N/A
 WINDLOAD RATING
W6 DP38T
 DESCRIPTION: CANYON RIDGE / COACHMAN INTELICORE W6 16'2"W
 DRAWN BY: SH DATE: 05/14/14 SCALE: NTS DWG. B
 CHECKED BY: DATE: SHEET 4 OF 4 SIZE B
 DWG. NO.: 104932 VER: TDI