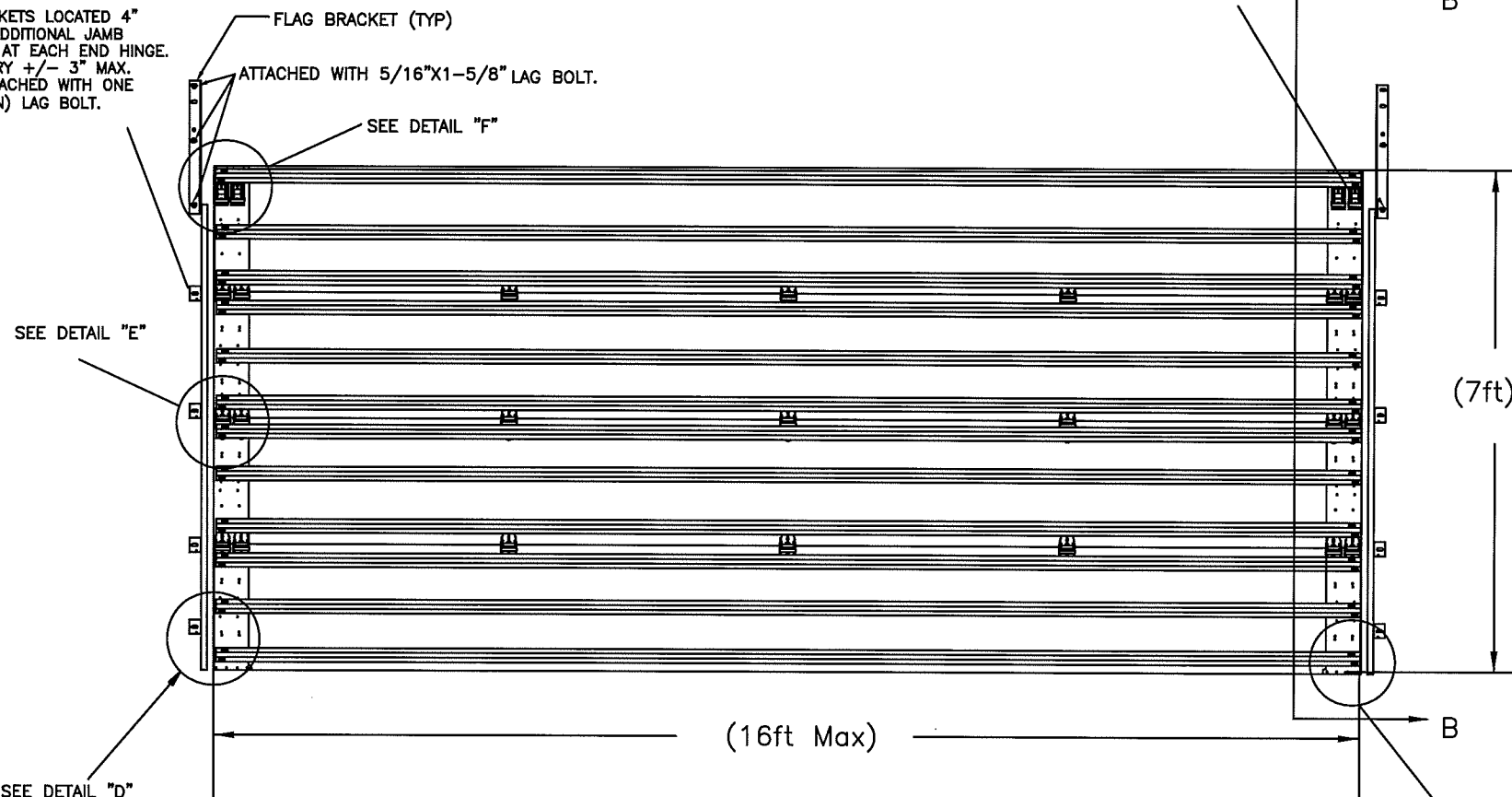


NOTES:

- VANTAGE STANDARD PRESS SHOWN, AMERICAN 200, CS, XL, CSX OR CSL SERIES MAY BE SUBSTITUTED.
- STRUTS ATTACHED WITH 2 SELF DRILLING SCREWS 1/4"-20 X 3/4" AT EACH STILE LOCATION AND BETWEEN EACH CENTER STILE LOCATION WITH TWO 1/4"-20 X 3/4" SCREWS.
- 4 SECTION HIGH DOOR SHOWN (7FT), TALLER DOOR CONFIGURATIONS MAY BE CONSTRUCTED UP TO A MAXIMUM OF 14FT HIGH, USING SAME PANEL CONSTRUCTION AS SHOWN (MAXIMUM SECTION HEIGHT OF 21").
- MINIMUM STEEL THICKNESS ON EXTERIOR AND INTERIOR FACE IS 26 GA. (.0165").
- SECTIONS EMBOSSED 14.00"x20.375" , 16" X20.375", 14"x41", 16"x40" OR SECTIONS WITHOUT EMBOSSEMENT MAY ALSO BE USED. (LOCATION AND QUANTITY OF CENTER STILES MUST BE THE SAME).
- TORSION SPRINGS OR EXTENSION SPRINGS AVAILABLE.
- LOCK MUST BE ATTACHED AT EACH SIDE OF DOOR. CAM & BAR LOCKS OR AN OPENER MAY BE SUBSTITUTED.
- WOOD MOUNT SHOWN, STEEL AND MASONRY ANGLE AND REVERSE ANGLE MOUNT AVAILABLE. NUMBER OF JAMB BRACKET ANCHOR LOCATIONS MUST BE THE SAME.
- JAMB DETAIL IN ACCORDANCE WITH DWG. # RCWL-0001
- THIS DOOR HAS NOT BEEN TESTED FOR WIND-BORNE DEBRIS.
- USE THIS DRAWING IN CONJUNCTION WITH INSTALLATION INSTRUCTIONS. WHERE THE DRAWING CONFLICTS WITH OTHER INSTALLATION INSTRUCTIONS, THIS DRAWING GOVERNS.

BOTTOM JAMB BRACKETS LOCATED 4" OFF THE FLOOR. ADDITIONAL JAMB BRACKETS LOCATED AT EACH END HINGE. PLACEMENT CAN VARY +/- 3" MAX. JAMB BRACKETS ATTACHED WITH ONE (5/16 X 1-1/2 MIN) LAG BOLT.

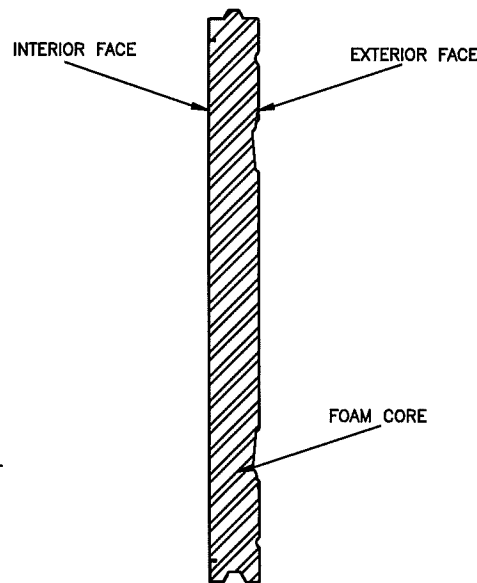


- SECTION "B-B"
- STRUT 3"20ga.
 - STRUT 3"20ga.
 - STRUT 3"20ga.
 - STRUT 3"20ga.
 - STRUT 3"20ga.
 - STRUT 3"20ga.
 - STRUT 3"20ga.
 - END HINGE
 - STRUT 3"20ga.
 - STRUT 3"20ga.
 - STRUT 3"20ga.
 - STRUT 3"20ga.
 - STRUT 3"20ga.
 - STRUT 3"20ga.
 - weather seal

Strut Requirements

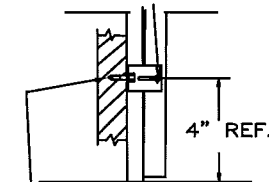
# sections	# Struts
	3"
4	12
5	15
6	18
7	21
*8	24

*SEE NOTE 4



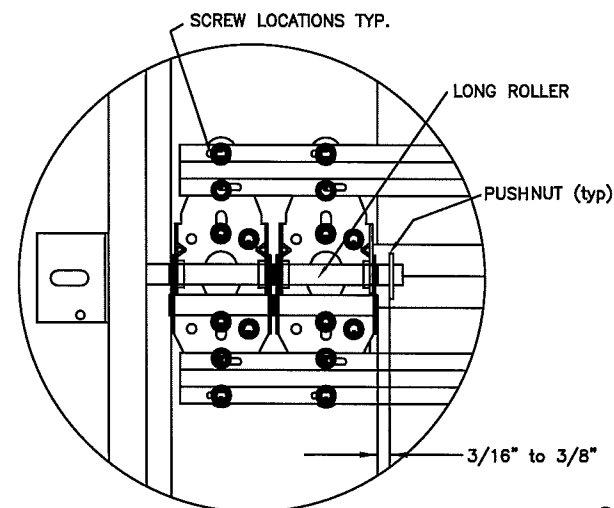
SECTION DETAIL

1/4" TRACK BOLT & NUT #80932 & #80930

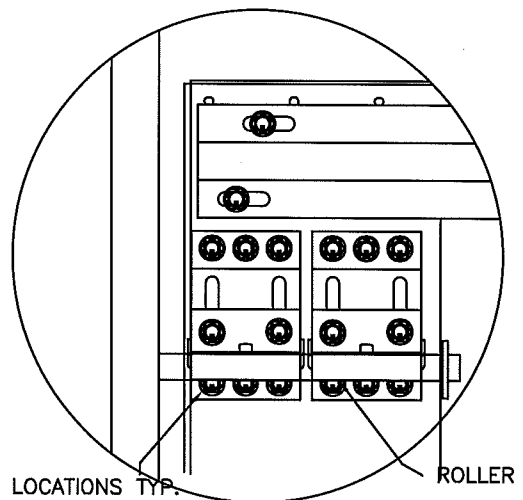


DETAIL D

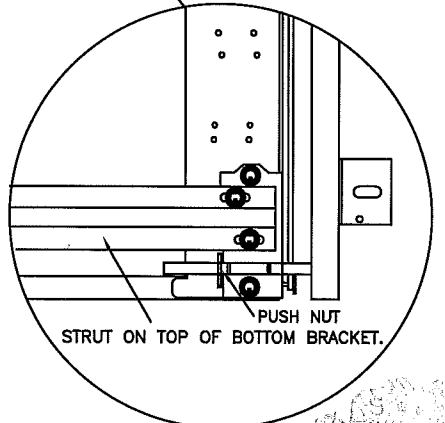
5/16"x1 5/8" LAG SCREW #80906 TYP.



DETAIL E



DETAIL F



STRUT ON TOP OF BOTTOM BRACKET.

DESIGN LOAD +41.6/-46.3

PROFESSIONAL ENGINEER'S SEAL PROVIDED ONLY FOR VERIFICATION OF WINDLOAD CONSTRUCTION DETAILS

JOHN E. SCATES, P.E.
3121 FAIRGATE
CARROLLTON, TX
FL P.E. # 51737
TX. P.E. # 56308, F-2203

This product was tested/evaluated in accordance with ANSI/DASMA 108-05

NOTES: THIS DRAWING AND / OR TECHNICAL INFORMATION ON THIS SHEET IS THE PROPERTY OF MID-AMERICA DOOR COMPANY AND IS LOANED IN CONFIDENCE FOR ENGINEERING AND MUTUAL ASSISTANCE PURPOSES ONLY, AND MAY NOT BE REPRODUCED OR USED TO MANUFACTURE ANYTHING DISCLOSED HEREON WITHOUT THE EXPRESSED PERMISSION OF MID-AMERICA DOOR COMPANY.

Rev.	By	Date	Description	Rev.	By	Date	Description
0		5/1/08	NEW DRAWING	8			
1		1/12/12	updated for 2010 spec	9			
2		7/26/12	updated NOTES	10			
3				11			
4				12			
5				13			
6				14			
7				15			

SCALE N.T.S. DATE 05-6-08

DRAWN BY BJR INITIAL CHK. TL ENGR. JS.

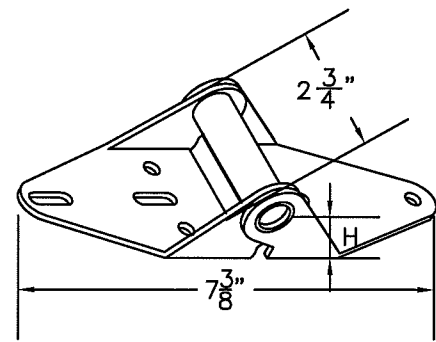
DESCRIPTION: VANTAGE WINDLOAD SERIES

TITLE: WINDLOAD CONSTRUCTION DETAILS

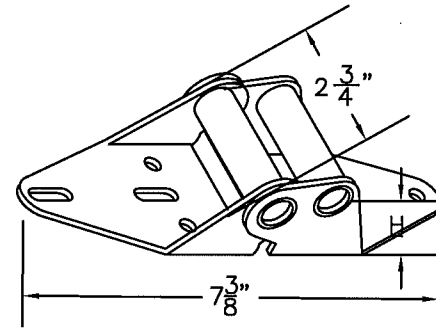
DWG. NO. VWLB-1607

SHT. 1 OF 2

REV. 2

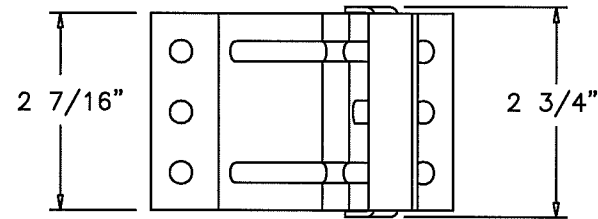


P/N 20602 (#1 HINGE)

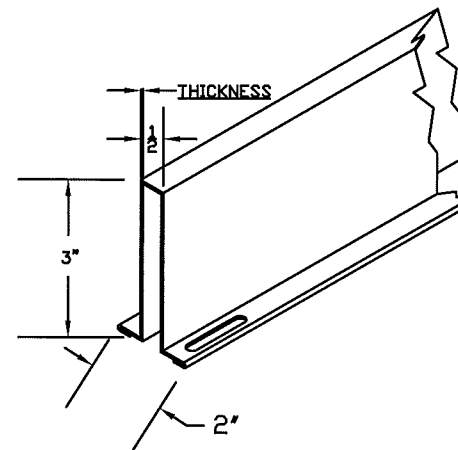
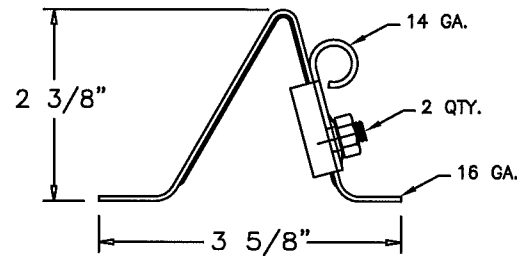


END HINGE

HINGE #	GAGE #	"H"	PART NUMBER
1	14	3/4"	20602
2	14	1"	20606
3	14	1 1/4"	20610
4	14	1 1/2"	20614
5	14	1 3/4"	20616
6	13	2"	20618

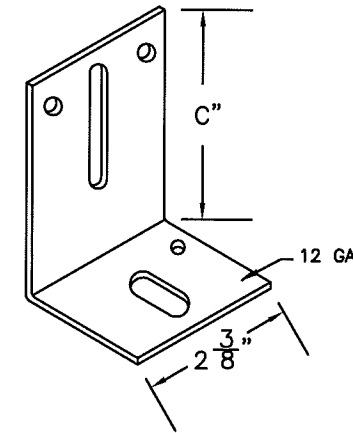


P/N 20356 TOP FIXTURE



3" STRUT

THICKNESS OF STRUTS ARE AS STATED BELOW	
3" 20 GAUGE 50 KSI MINIMUM YIELD	.036" MIN.

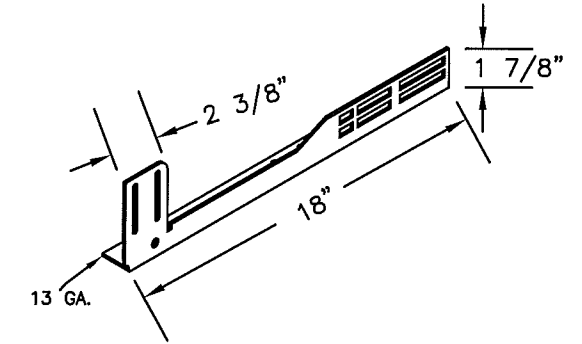


TRACK BRACKET

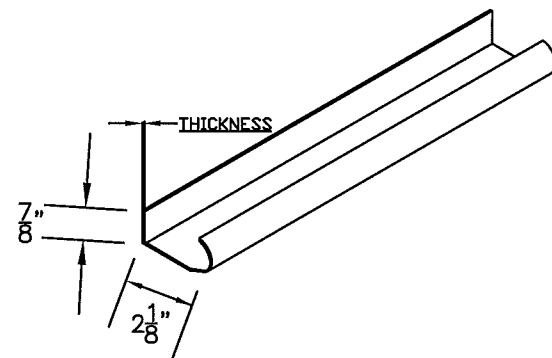
BRACKET #	"C"	PART NUMBER
4	3"	20368
5	3 1/4"	20370
6	3 1/2"	20372
7	3 3/4"	20374
8	4"	20376
9	4 3/4"	20378

NOTES:

- STRUTS ARE NOT MORE THAN 1 1/2" SHORTER THAN SECTION.
- USE IN CONJUNCTION WITH INSTALLATION INSTRUCTIONS. WHERE THE DRAWING CONFLICTS WITH OTHER INSTALLATION INSTRUCTIONS, THIS DRAWING GOVERNS.

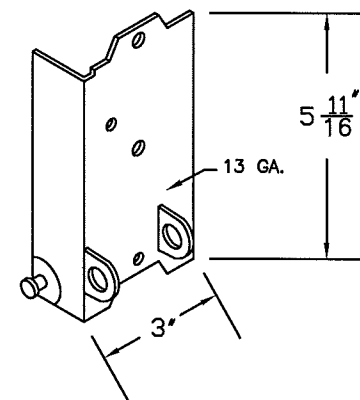


20366 & 7 FLAG BRACKET

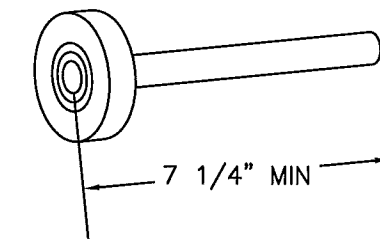


WINDLOAD TRACK

THICKNESS OF TRACK IS AS STATED BELOW	
VERTICAL TRACK IS MIN. 16 GA.	.058" MIN
HORIZONTAL TRACK IS MIN. 16 GA.	.058" MIN



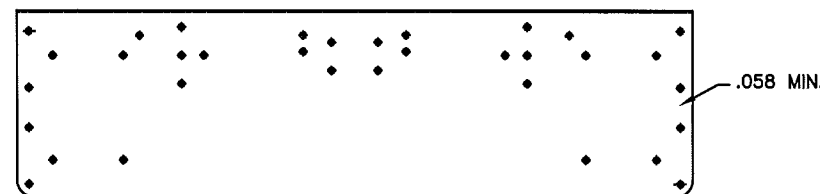
P/N 20334&5 BOTTOM BRKT.



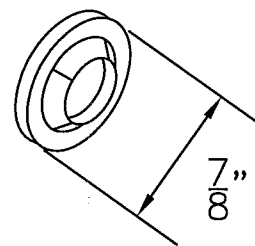
P/N 20806 LONG STEM 10 BALL ROLLER



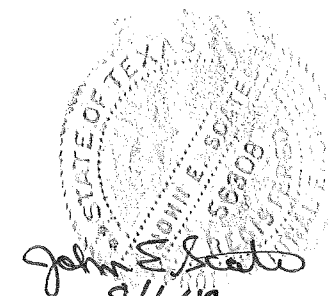
P/N 10480 & 10485 (21" & 18") HINGE PLATES



P/N 10400 & 10410 (21" & 18") END STILE



P/N 20239 PUSH NUT



PROFESSIONAL ENGINEER'S SEAL PROVIDED ONLY FOR VERIFICATION OF WINDLOAD CONSTRUCTION DETAILS

JOHN E. SCATES, P.E.
3121 FAIRGATE
CARROLLTON, TX
FL. P.E. # 51737
TX. P.E. # 56308, F-2203

NOTES: THIS DRAWING AND / OR TECHNICAL INFORMATION ON THIS SHEET IS THE PROPERTY OF MID-AMERICA DOOR COMPANY AND IS LOANED IN CONFIDENCE FOR ENGINEERING AND MUTUAL ASSISTANCE PURPOSES ONLY, AND MAY NOT BE REPRODUCED OR USED TO MANUFACTURE ANYTHING DISCLOSED HEREON WITHOUT THE EXPRESSED PERMISSION OF MID-AMERICA DOOR COMPANY.

Rev.	By	Date	Description	Rev.	By	Date	Description	SCALE	N.T.S.	DATE
0	BJR	4/28/08	NEW DRAWING	8						
1	BJR	1/12/11	updated for 2010 spec	9						
2	BJR	7/24/12	updated NOTES	10						
3				11						
4				12						
5				13						
6				14						
7				15						

DRAWN BY BJR		4-29-08	Mid-America Door Company	PONCA CITY, OK
INITIAL CHK. TL		4-29-08		
FINAL CHK.			DESCRIPTION	
ENGR.			WINDLOAD SERIES HARDWARE	
APPR. BY			TITLE	
			WINDLOAD CONSTRUCTION DETAILS	
			DWG. NO.	SHT. OF
			VWLB-1607	2 OF 2
				REV. 2