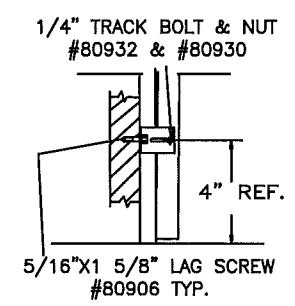
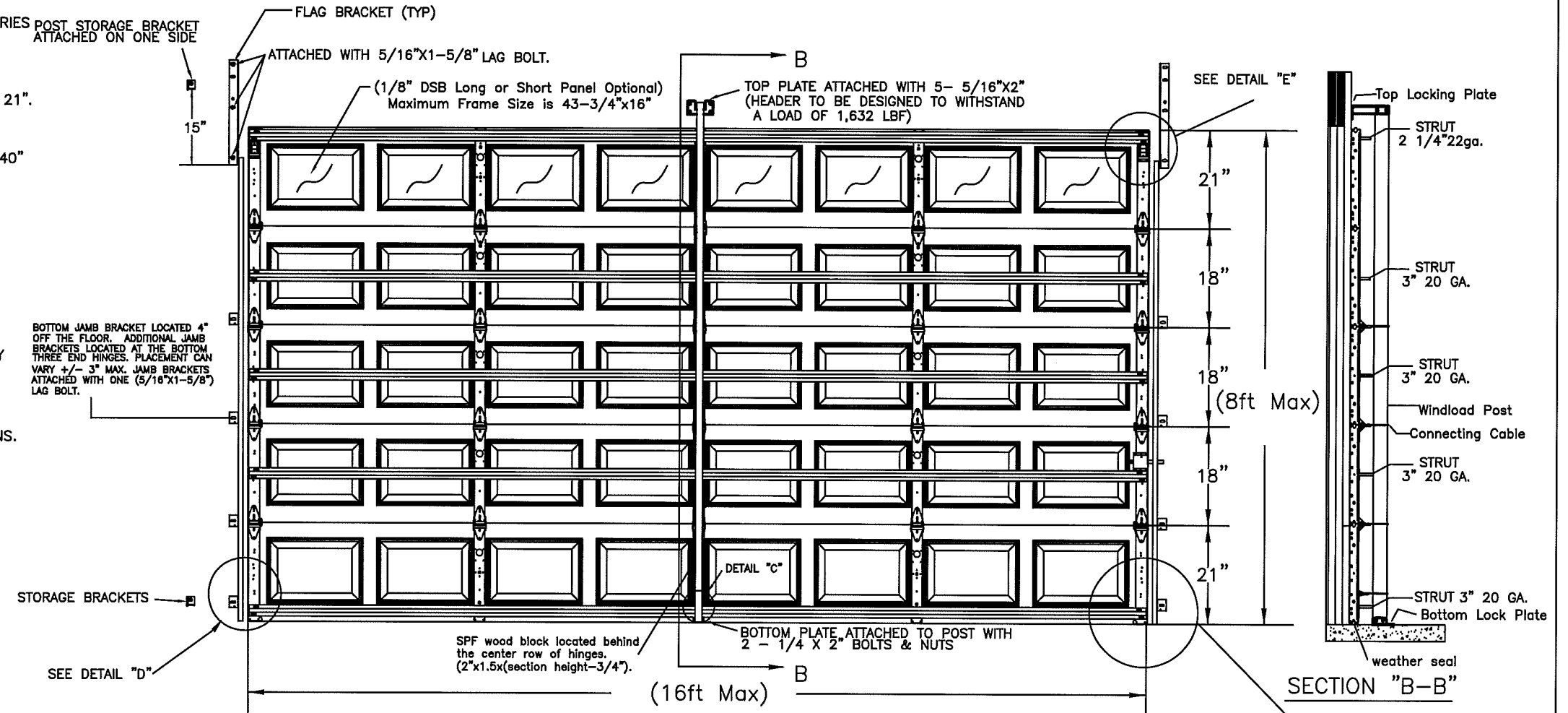
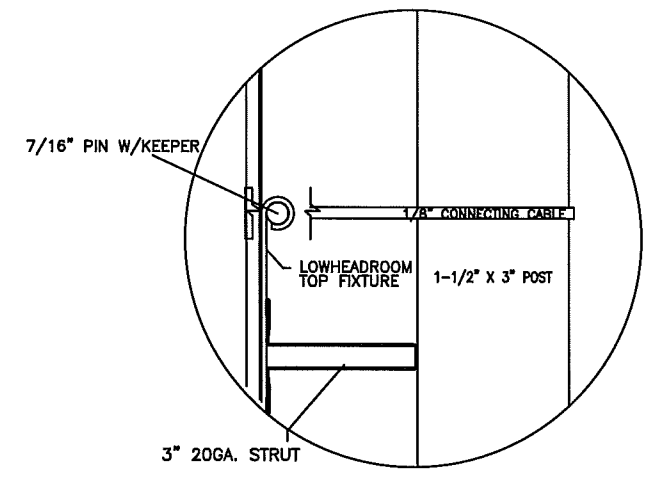


NOTES:

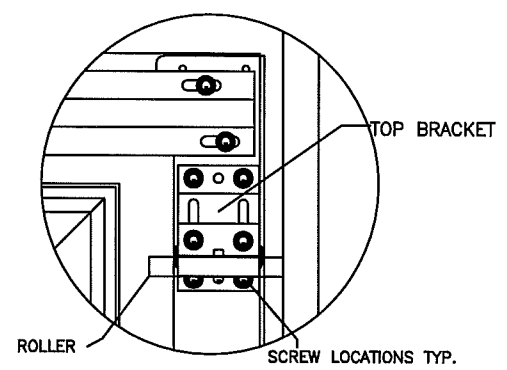
- REGAL SHOWN, CELEBRITY, AMERICAN 100, CS, XL, CSX OR CSL SERIES POST STORAGE BRACKET MAY BE SUBSTITUTED.
- STRUTS ATTACHED WITH 2 SELF DRILLING SCREWS 1/4"-20 X 3/4" AT EACH STILE LOCATION
- 5 SECTION HIGH DOOR SHOWN (8FT) MAXIMUM SECTION HEIGHT OF 21".
- MINIMUM STEEL THICKNESS FOR SECTION IS 25 GA. (.0185").
- SECTIONS EMBOSSED 14.00"x20.375", 16" X20.375", 14"x41", 16"x40" OR SECTIONS WITHOUT EMBOSSEMENT MAY ALSO BE USED. (LOCATION AND QUANTITY OF CENTER STILES MUST BE THE SAME).
- TORSION SPRINGS OR EXTENSION SPRINGS AVAILABLE.
- A LOCK MUST BE ATTACHED TO EITHER SIDE OF THE DOOR. CAM & BAR LOCKS OR AN OPENER MAY BE SUBSTITUTED.
- WOOD MOUNT SHOWN, STEEL AND MASONRY ANGLE AND REVERSE ANGLE MOUNT AVAILABLE. NUMBER OF JAMB BRACKET ANCHOR LOCATIONS MUST BE THE SAME.
- JAMB DETAIL IN ACCORDANCE WITH DWG. # RCWL-0001
- THE POST AND CABLES WITH PINS AND KEEPER MUST BE PROPERLY STOWED USING THE POST STORAGE BRACKET.
- THIS DOOR HAS NOT BEEN TESTED FOR WIND-BORNE DEBRIS.
- USE THIS DRAWING IN CONJUNCTION WITH INSTALLATION INSTRUCTIONS. WHERE THE DRAWING CONFLICTS WITH OTHER INSTALLATION INSTRUCTIONS, THIS DRAWING GOVERNS.



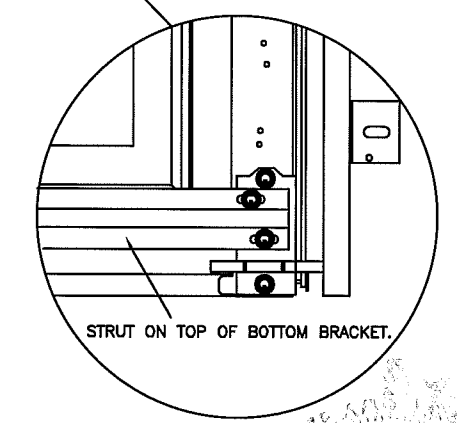
DETAIL D



DETAIL C



DETAIL E



SECTION "B-B"

This product was tested/evaluated in accordance with ANSI/DASMA 108-05

DESIGN LOAD +30/-33.5

PROFESSIONAL ENGINEER'S SEAL PROVIDED ONLY FOR VERIFICATION OF WINDLOAD CONSTRUCTION DETAILS REPORT #98088.01-801-47

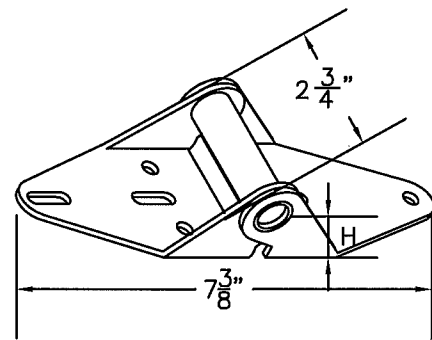
JOHN E. SCATES, P.E.
3121 FARGATE
CARROLLTON, TX
FLORIDA P.E. # 51737
TX. P.E. # 56308 F-2203

NOTES: THIS DRAWING AND / OR TECHNICAL INFORMATION ON THIS SHEET IS THE PROPERTY OF MID-AMERICA DOOR COMPANY AND IS LOANED IN CONFIDENCE FOR ENGINEERING AND MUTUAL ASSISTANCE PURPOSES ONLY, AND MAY NOT BE REPRODUCED OR USED TO MANUFACTURE ANYTHING DISCLOSED HEREON WITHOUT THE EXPRESSED PERMISSION OF MID-AMERICA DOOR COMPANY.

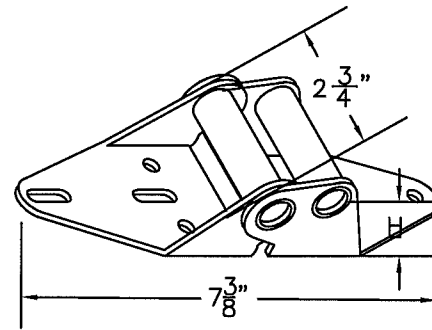
Rev.	By	Date	Description	Rev.	By	Date	Description
0	BR	2/1/10	NEW DRAWING	8			
1	BR	1/12/12	updated for 2010 file	9			
2	BR	7/26/12	updated NOTES	10			
3				11			
4				12			
5				13			
6				14			
7				15			

SCALE	N.T.S.	DATE
DRAWN BY	BJR	02-1-10
INITIAL CHK.	BJR	"
FINAL CHK.	"	"
ENGR.	"	"
APPR. BY	JS.	"

		Mid-America Door Company PONCA CITY, OK	
DESCRIPTION REGAL/ CELEBRITY WINDLOAD SERIES			
TITLE WINDLOAD CONSTRUCTION DETAILS		DWG. NO. RCWLP6-1608	SHT. 1 OF 3
		REV.	2

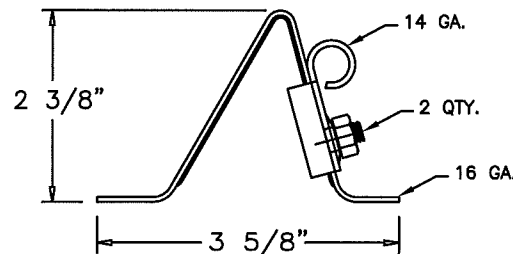
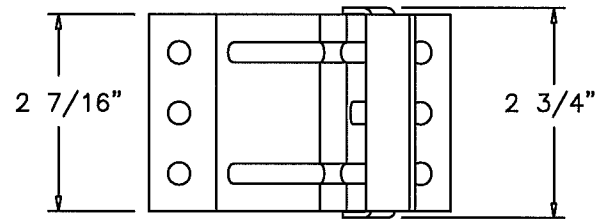


P/N 20604 (#1 HINGE)

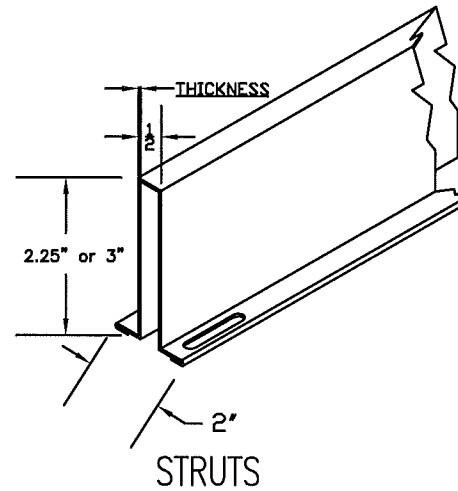


END HINGE

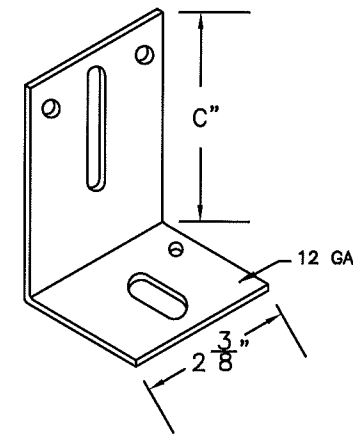
HINGE #	GAGE #	"H"	PART NUMBER
1	14	3/4"	20602
2	14	1"	20606
3	14	1 1/4"	20610
4	14	1 1/2"	20614



P/N 20356 TOP FIXTURE

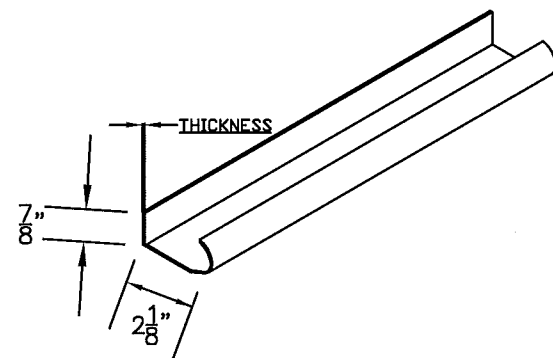


THICKNESS OF STRUTS ARE AS STATED BELOW	
2.25" 22 GAUGE 33 KSI MINIMUM YIELD	.028" MIN.
3" 20 GAUGE 50 KSI MINIMUM YIELD	.036" MIN.



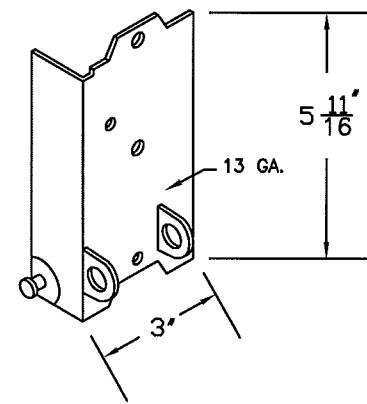
TRACK BRACKET

BRACKET #	"C"	PART NUMBER
4	3"	20368
5	3 1/4"	20370
6	3 1/2"	20372
7	3 3/4"	20374

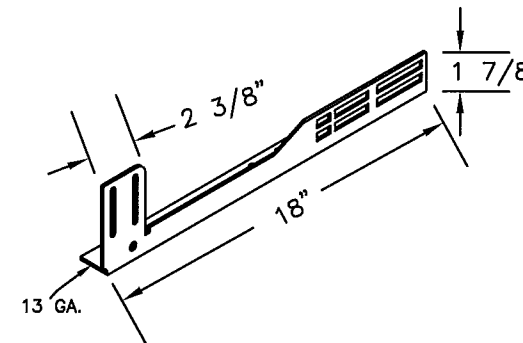


WINDLOAD TRACK

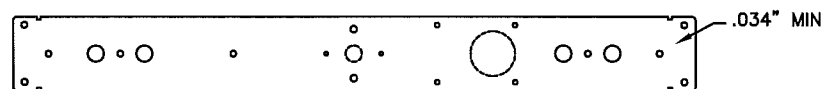
THICKNESS OF TRACK IS AS STATED BELOW	
VERTICAL TRACK IS MIN. 16 GA.	.058" MIN
HORIZONTAL TRACK IS MIN. 18 GA.	.045" MIN



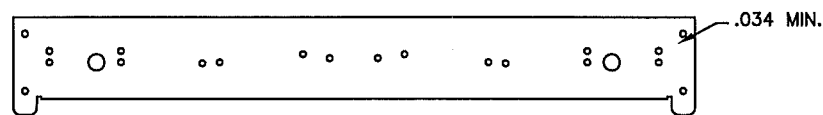
P/N 20334&5 BOTTOM BRKT.



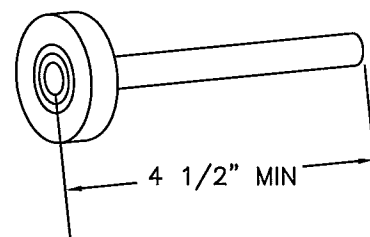
20366 & 7 FLAG BRACKET



P/N 10455 & 10465 (21" & 18") CENTER STILE



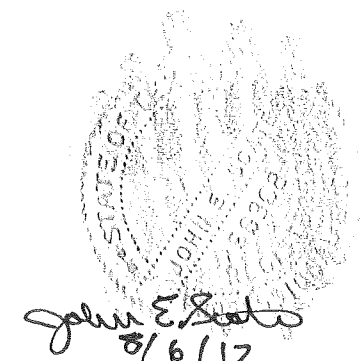
P/N 10450 & 10460 (21" & 18") END STILE



P/N 20804 SHORT STEM 10 BALL ROLLER

NOTES:

1. STRUTS ARE NOT MORE THAN 1 1/2" SHORTER THAN SECTION.
2. USE IN CONJUNCTION WITH INSTALLATION INSTRUCTIONS. WHERE THE DRAWING CONFLICTS WITH OTHER INSTALLATION INSTRUCTIONS, THIS DRAWING GOVERNS.



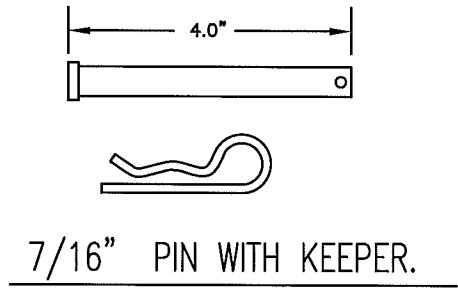
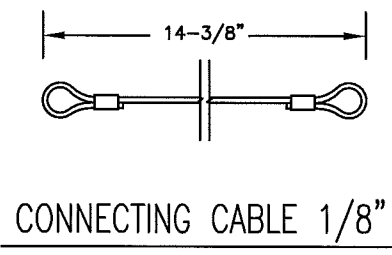
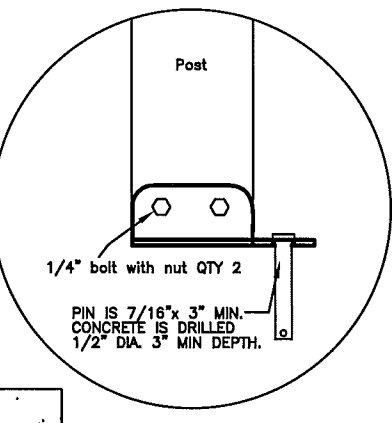
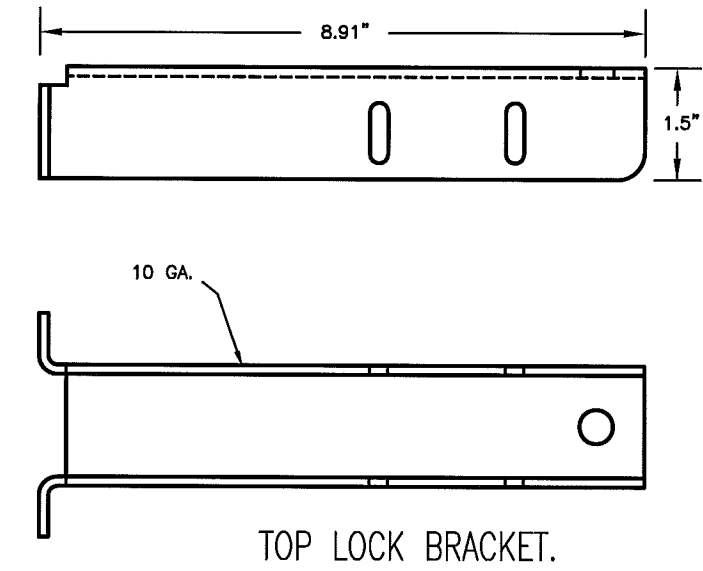
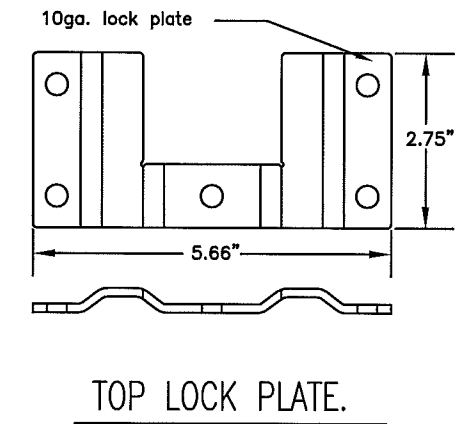
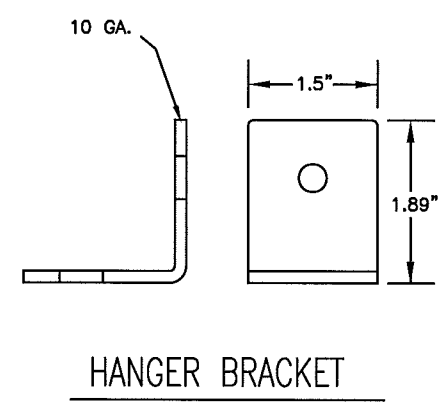
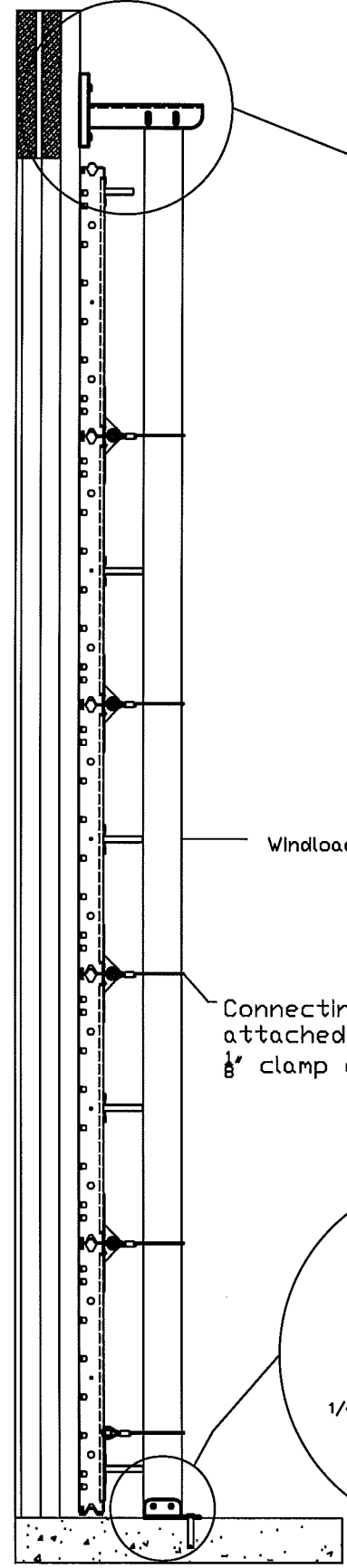
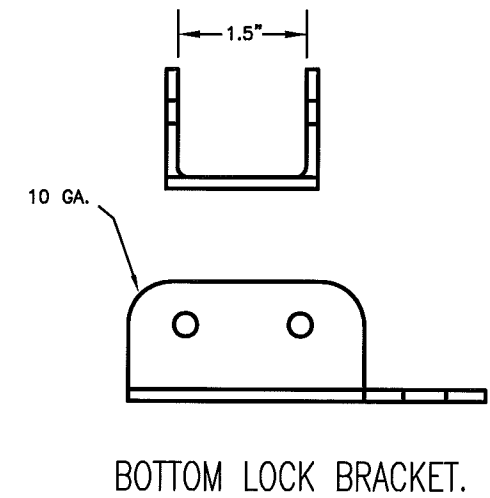
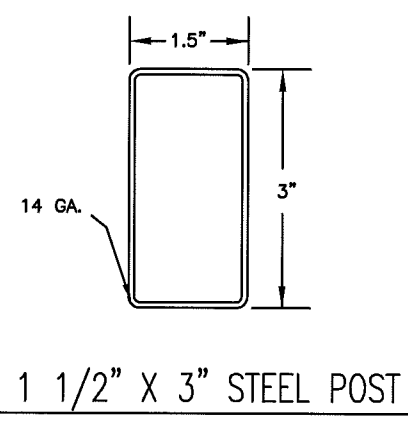
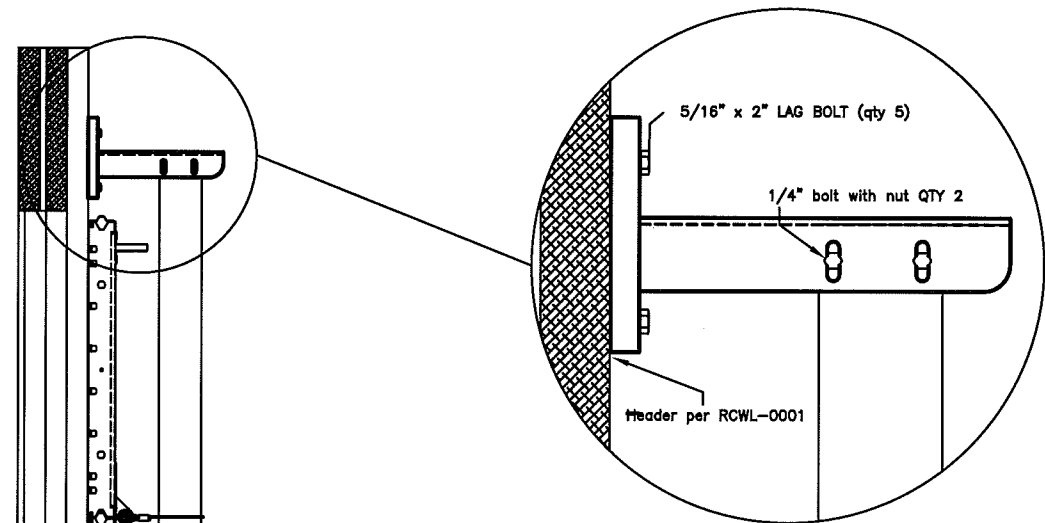
PROFESSIONAL ENGINEER'S SEAL PROVIDED ONLY FOR VERIFICATION OF WINDLOAD CONSTRUCTION DETAILS

JOHN E. SCATES, P.E.
3121 FAIRGATE
CARROLLTON, TX
FL. P.E. # 51737
TX. P.E. # 56308 F-2203

NOTES: THIS DRAWING AND / OR TECHNICAL INFORMATION ON THIS SHEET IS THE PROPERTY OF MID-AMERICA DOOR COMPANY AND IS LOANED IN CONFIDENCE FOR ENGINEERING AND MUTUAL ASSISTANCE PURPOSES ONLY, AND MAY NOT BE REPRODUCED OR USED TO MANUFACTURE ANYTHING DISCLOSED HEREON WITHOUT THE EXPRESSED PERMISSION OF MID-AMERICA DOOR COMPANY.

Rev.	By	Date	Description	Rev.	By	Date	Description	SCALE	N.T.S.	DATE
0	sm	2/24/04	NEW DRAWING	8				DRAWN BY	BJR	12-4-08
1	sm	1/18/12	updated for 2010 file	9				INITIAL CHK.	BJR	
2	sm	7/26/12	updated FIRST BRKT	10				FINAL CHK.		
3				11				ENGR.		
4				12				APPR. BY:		
5				13						
6				14						
7				15						

Mid-America Door Company		POCA CITY, OK
DESCRIPTION WINDLOAD SERIES HARDWARE		
TITLE WINDLOAD CONSTRUCTION DETAILS	DWG. NO. RCWLP6-1608	SHT. 2 OF 3
REV. 2		REV. 2



John E. Scates

 8/6/12

 JOHN E. SCATES, P.E.

 3121 FAIRGATE

 CARROLLTON, TX

 FL. P.E. # 51737

 TX. P.E. # 56308 F-2203

PROFESSIONAL ENGINEER'S

 SEAL PROVIDED ONLY FOR

 VERIFICATION OF WINDLOAD

 CONSTRUCTION DETAILS

NOTES: THIS DRAWING AND / OR TECHNICAL INFORMATION ON THIS SHEET IS THE PROPERTY OF MID-AMERICA DOOR COMPANY AND IS LOANED IN CONFIDENCE FOR ENGINEERING AND MUTUAL ASSISTANCE PURPOSES ONLY, AND MAY NOT BE REPRODUCED OR USED TO MANUFACTURE ANYTHING DISCLOSED HEREON WITHOUT THE EXPRESSED PERMISSION OF MID-AMERICA DOOR COMPANY.

Rev.	By	Date	Description	Rev.	By	Date	Description	SCALE	N.T.S.	DATE
0	BR	2/1/10	NEW DRAWING	8						
1	BR	1/12/12	updated for 2010 file	9				DRAWN BY	BJR	2/1/10
2	BR	7/26/12	updated FIRST ISSUE	10				INITIAL CHK.	BJR	
3				11				FINAL CHK.		
4				12				ENGR.		
5				13				APPR. BY		
6				14						
7				15						

Mid-America Door Company
 PONCA CITY, OK

DESCRIPTION: WINDLOAD POST HARDWARE

TITLE: WINDLOAD CONSTRUCTION DETAILS	DWG. NO. RCWLP6-1608	SHT. 3 OF 3	REV. 2
--------------------------------------	----------------------	-------------	--------