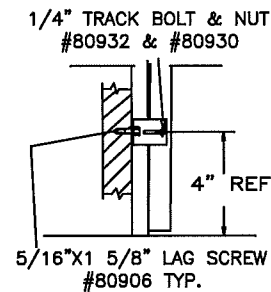
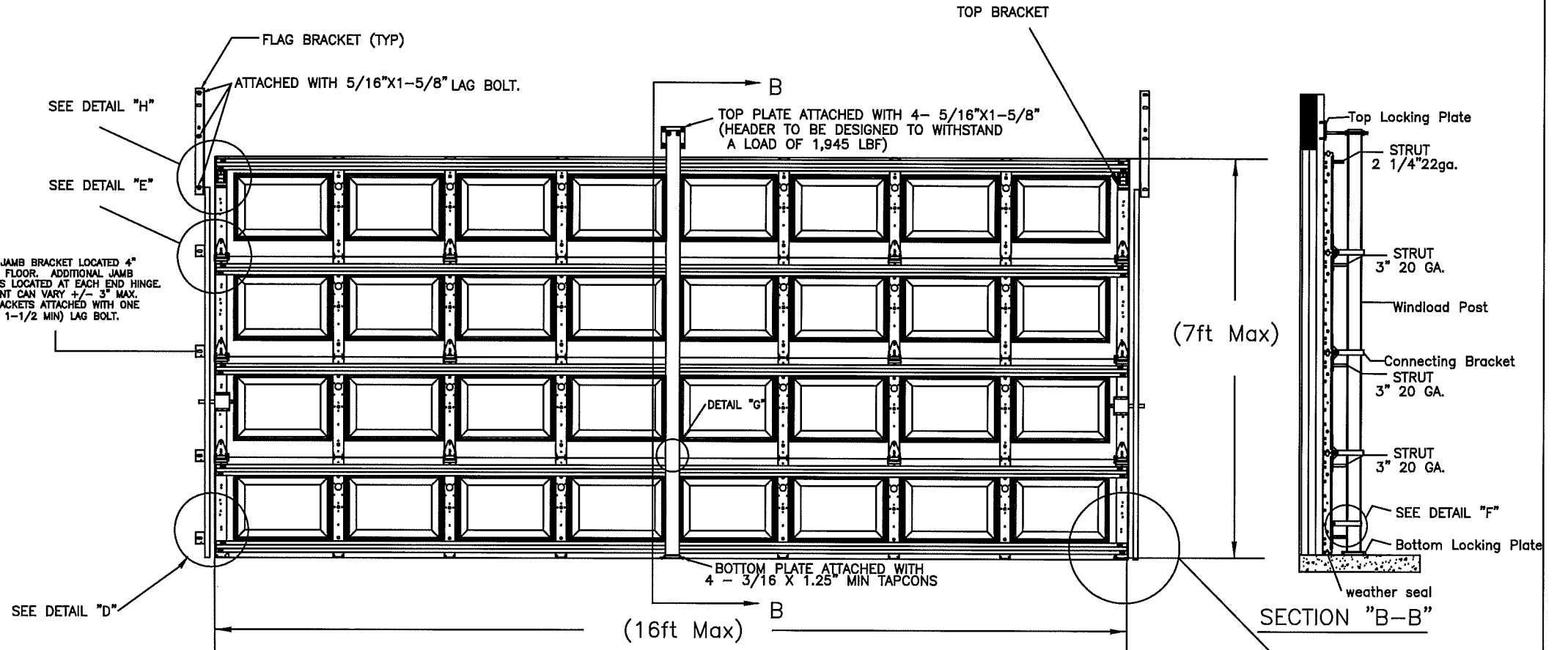


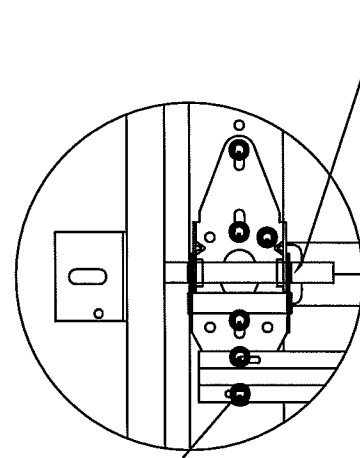
NOTES:

- REGAL SHOWN, CELEBRITY, AMERICAN 100, CS, XL, CSX OR CSL SERIES MAY BE SUBSTITUTED.
- STRUTS ATTACHED WITH 2 SELF DRILLING SCREWS 1/4"-20 X 3/4" AT EACH STILE LOCATION
- 4 SECTION HIGH DOOR SHOWN ( 7FT ) ,TALLER DOOR CONFIGURATIONS MAY BE CONSTRUCTED UP TO A MAXIMUM OF 14FT HIGH, USING SAME PANEL CONSTRUCTION AS SHOWN (MAXIMUM SECTION HEIGHT OF 21").
- MINIMUM STEEL THICKNESS FOR SECTION IS 25 GA. (.0185").
- SECTIONS EMBOSSED 14.00"x20.375" ,16" X20.375" ,14"x41" ,16"x40" OR SECTIONS WITHOUT EMBOSSEMENT MAY ALSO BE USED. (LOCATION AND QUANTITY OF CENTER STILES MUST BE THE SAME).
- TORSION SPRINGS OR EXTENSION SPRINGS AVAILABLE.
- LOCK MUST BE ATTACHED AT EACH SIDE OF THE DOOR. CAM & BAR LOCKS OR AN OPENER MAY BE SUBSTITUTED.
- WOOD MOUNT SHOWN, STEEL AND MASONRY ANGLE AND REVERSE ANGLE MOUNT AVAILABLE. NUMBER OF JAMB BRACKET ANCHOR LOCATIONS MUST BE THE SAME.
- JAMB DETAIL IN ACCORDANCE WITH DWG. # RCWL-0001
- STRUT PLACEMENT SHOWN IS TYPICAL (STRUTS ARE OVER THE HINGES AS SHOWN USING THE HOLES PROVIDED IN THE HINGE) SEE DETAIL "E"
- THIS DOOR HAS NOT BEEN TESTED FOR WIND-BORNE DEBRIS.
- USE THIS DRAWING IN CONJUNCTION WITH INSTALLATION INSTRUCTIONS. WHERE THE DRAWING CONFLICTS WITH OTHER INSTALLATION INSTRUCTIONS, THIS DRAWING GOVERNS.

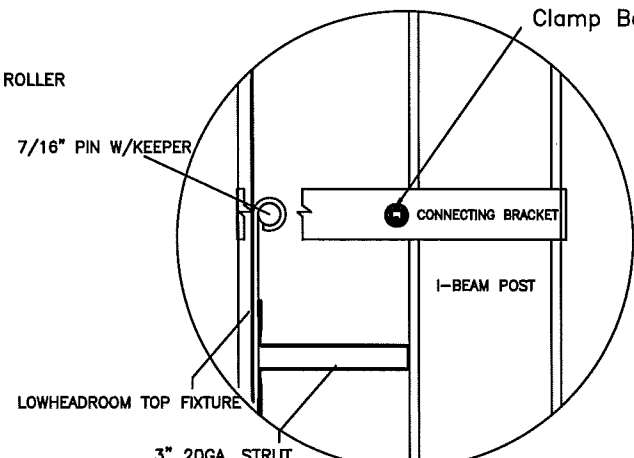
BOTTOM JAMB BRACKET LOCATED 4" OFF THE FLOOR. ADDITIONAL JAMB BRACKETS LOCATED AT EACH END HINGE. PLACEMENT CAN VARY +/- 3" MAX. JAMB BRACKETS ATTACHED WITH ONE (5/16 X 1-1/2 MIN) LAG BOLT.



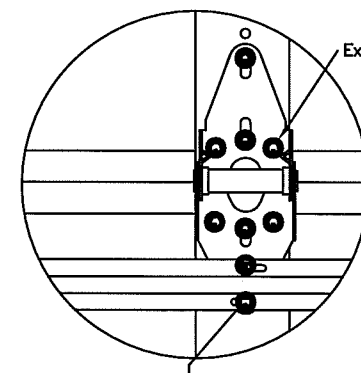
DETAIL D



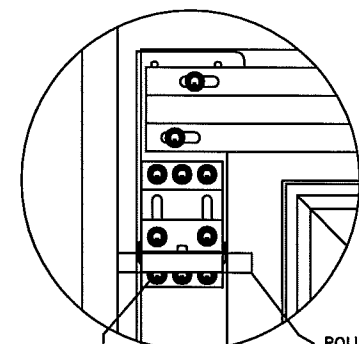
DETAIL E



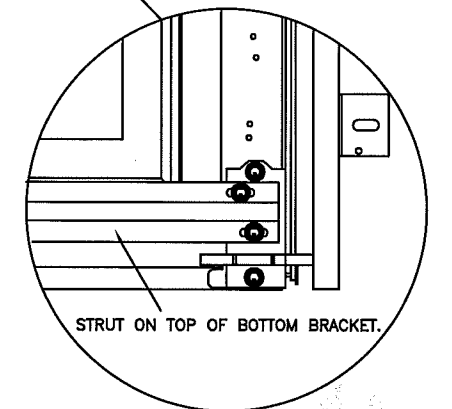
DETAIL F



DETAIL G



DETAIL H



PROFESSIONAL ENGINEER'S SEAL PROVIDED ONLY FOR VERIFICATION OF WINDLOAD CONSTRUCTION DETAILS  
 JOHN E. SCATES, P.E.  
 3121 FAIRGATE  
 CARROLLTON, TX  
 FL P.E. # 51737  
 TX, P.E. # 58308, F-2203

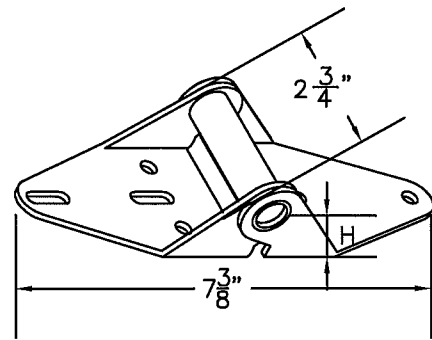
This product was tested/evaluated in accordance with ANSI/DASMA 108-05

DESIGN LOAD +41/-46

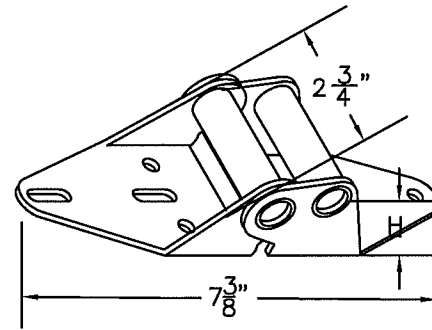
Rev.	By	Date	Description	Rev.	By	Date	Description
0	BJR	1/17/05	NEW DRAWING	8			
1	BJR	1/17/05	UPDATED FOR 2010 FBC	9			
2	BJR	7/26/12	UPDATED NOTES	10			
3				11			
4				12			
5				13			
6				14			
7				15			

SCALE	N.T.S.	DATE	01-17-05
DRAWN BY	BJR	INITIAL CHK.	BJR
ENGR.		APPR. BY	JS.
DESCRIPTION REGAL/ CELEBRITY WINDLOAD SERIES TITLE WINDLOAD CONSTRUCTION DETAILS			
DWG. NO.		SHT. REV.	
RCWL8-1607		1 OF 2	

NOTES: THIS DRAWING AND / OR TECHNICAL INFORMATION ON THIS SHEET IS THE PROPERTY OF MID-AMERICA DOOR COMPANY AND IS LOANED IN CONFIDENCE FOR ENGINEERING AND MUTUAL ASSISTANCE PURPOSES ONLY, AND MAY NOT BE REPRODUCED OR USED TO MANUFACTURE ANYTHING DISCLOSED HEREON WITHOUT THE EXPRESSED PERMISSION OF MID-AMERICA DOOR COMPANY.

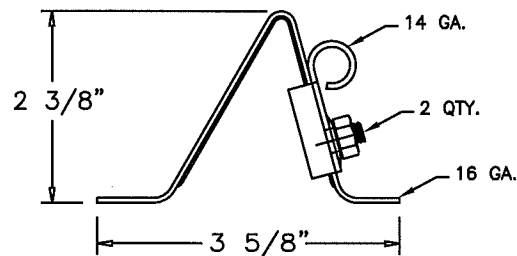
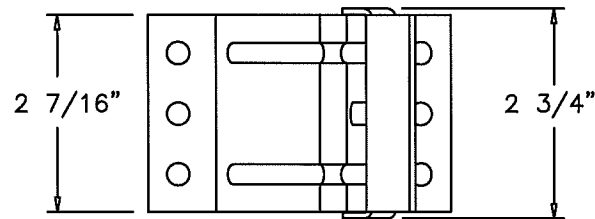


P/N 20604 (#1 HINGE)

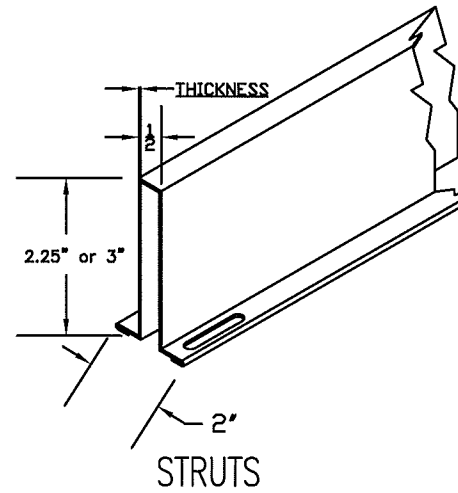


END HINGE

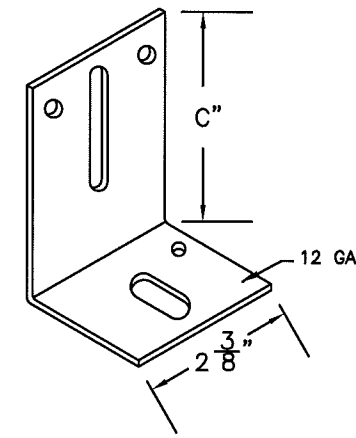
HINGE #	GAGE #	"H"	PART NUMBER
1	14	3/4"	20602
2	14	1"	20606
3	14	1 1/4"	20610
4	14	1 1/2"	20614



P/N 20356 TOP FIXTURE

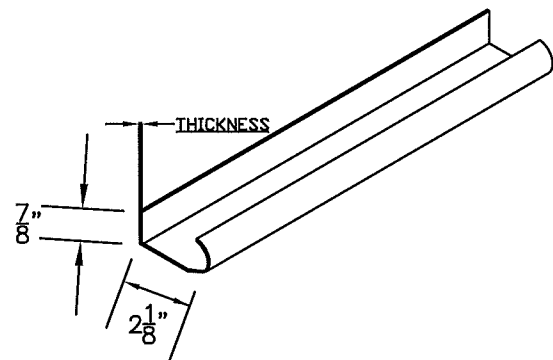


THICKNESS OF STRUTS ARE AS STATED BELOW	
2.25" 22 GAUGE 33 KSI MINIMUM YIELD	.028" MIN.
3" 20 GAUGE 50 KSI MINIMUM YIELD	.036" MIN.



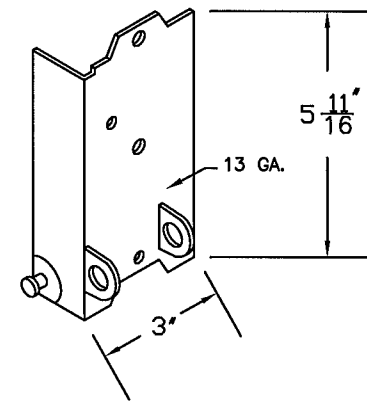
TRACK BRACKET

BRACKET #	"C"	PART NUMBER
4	3"	20368
5	3 1/4"	20370
6	3 1/2"	20372
7	3 3/4"	20374

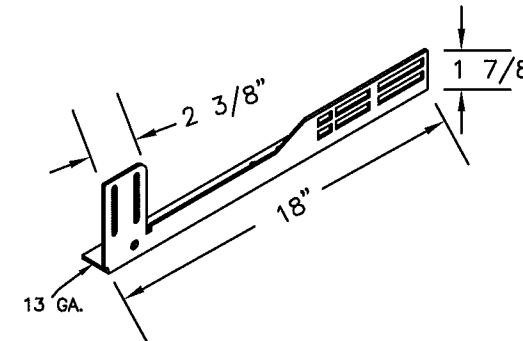


WINDLOAD TRACK

THICKNESS OF TRACK IS AS STATED BELOW	
VERTICAL TRACK IS MIN. 18 GA.	.045" MIN
HORIZONTAL TRACK IS MIN. 18 GA.	.045" MIN



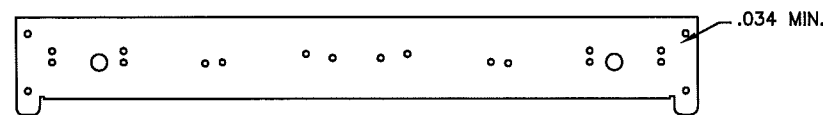
P/N 20334&5 BOTTOM BRKT.



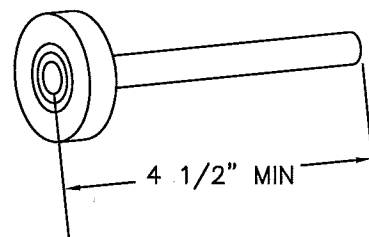
20366 & 7 FLAG BRACKET



P/N 10455 & 10465 (21" & 18") CENTER STILE



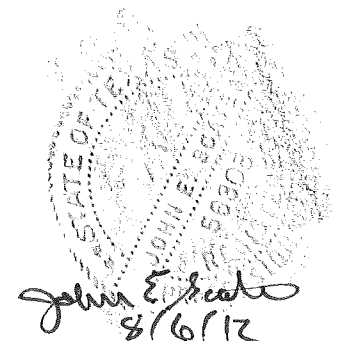
P/N 10450 & 10460 (21" & 18") END STILE



P/N 20804 SHORT STEM 10 BALL ROLLER

NOTES:

1. STRUTS ARE NOT MORE THAN 1 1/2" SHORTER THAN SECTION.
2. USE IN CONJUNCTION WITH INSTALLATION INSTRUCTIONS. WHERE THE DRAWING CONFLICTS WITH OTHER INSTALLATION INSTRUCTIONS, THIS DRAWING GOVERNS.



PROFESSIONAL ENGINEER'S  
SEAL PROVIDED ONLY FOR  
VERIFICATION OF WINDLOAD  
CONSTRUCTION DETAILS

JOHN E. SCATES, P.E.  
3121 FAIRGATE  
CARROLLTON, TX  
FL. P.E. # 51737  
TX. P.E. # 56308, F-2203

NOTES: THIS DRAWING AND / OR TECHNICAL INFORMATION ON THIS SHEET IS THE PROPERTY OF MID-AMERICA DOOR COMPANY AND IS LOANED IN CONFIDENCE FOR ENGINEERING AND MUTUAL ASSISTANCE PURPOSES ONLY, AND MAY NOT BE REPRODUCED OR USED TO MANUFACTURE ANYTHING DISCLOSED HEREON WITHOUT THE EXPRESSED PERMISSION OF MID-AMERICA DOOR COMPANY.

Rev.	By	Date	Description	Rev.	By	Date	Description
0	BJR	2/24/04	NEW DRAWING	8			
1	BJR	1/12/12	Updated for 2010 Spec	9			
2	BJR	7/26/12	Updated NOTES	10			
3				11			
4				12			
5				13			
6				14			
7				15			

Mid-America Door Company  
PONCA CITY, OK

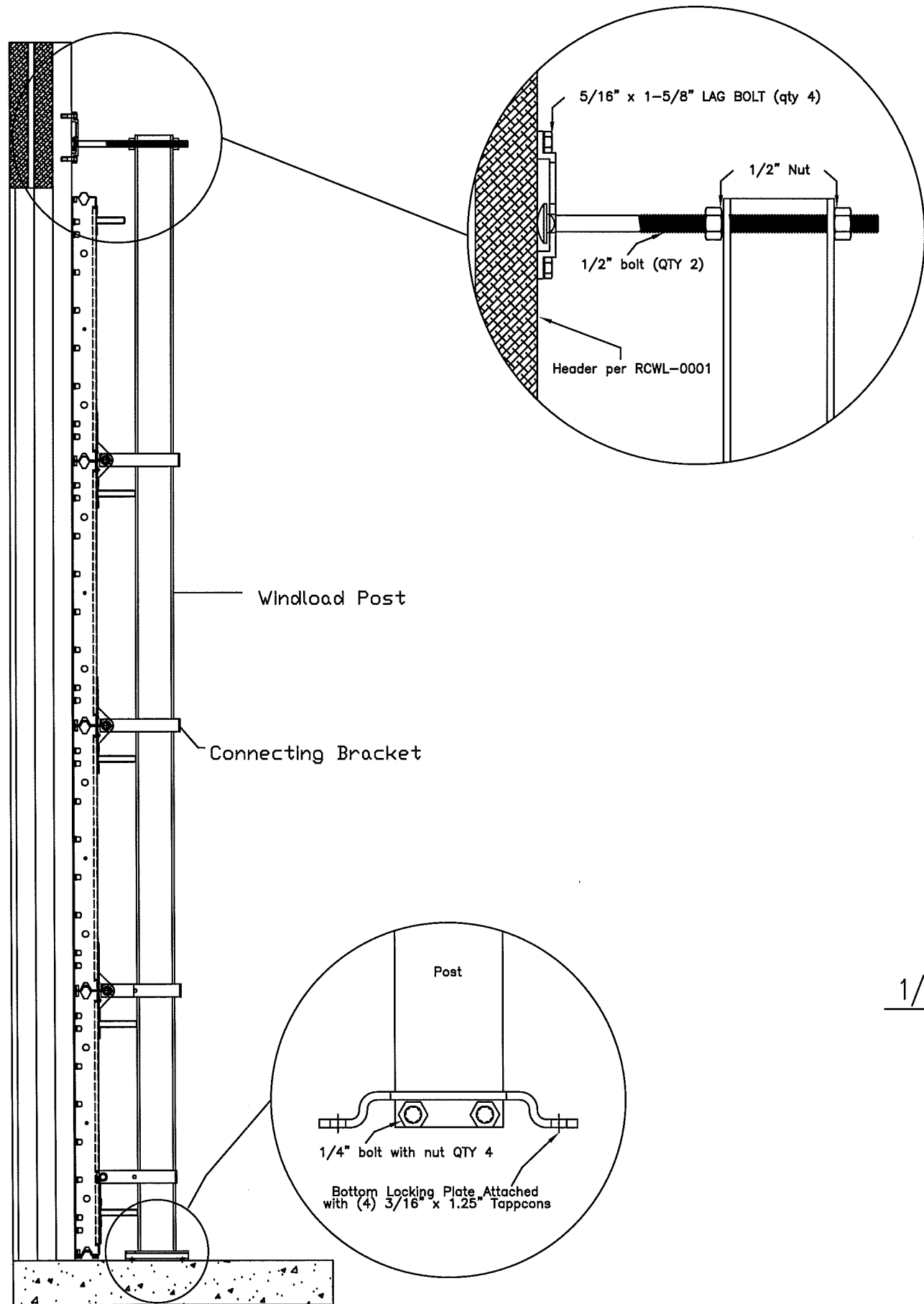
DESCRIPTION  
WINDLOAD SERIES HARDWARE

TITLE  
WINDLOAD CONSTRUCTION DETAILS

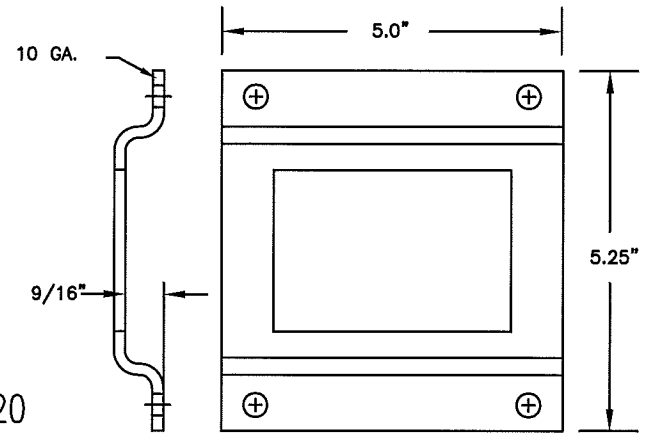
DWG. NO.  
RCWL8-1607

SHT.  
2 OF 3

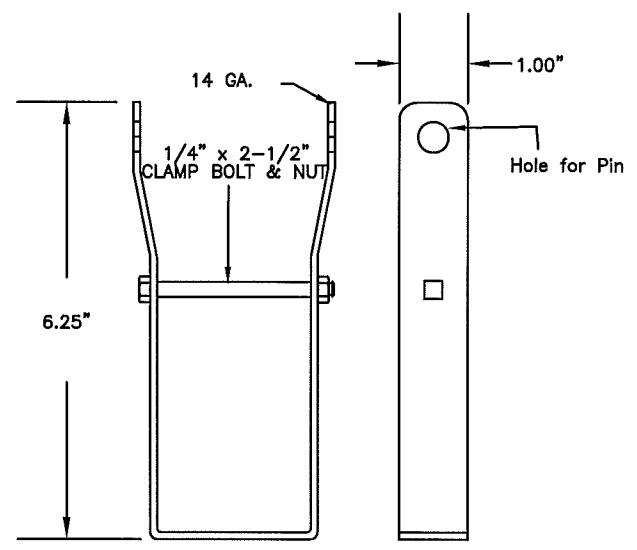
REV.  
2



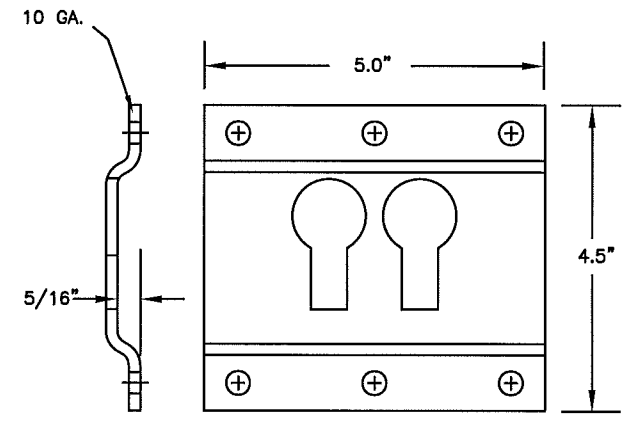
ALUMINUM Post 2.292 lbs/ft P/N 85020



P/N 20964 BOTTOM LOCK PLATE.



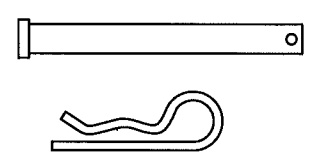
P/N 20965 CONNECTING BRACKET.



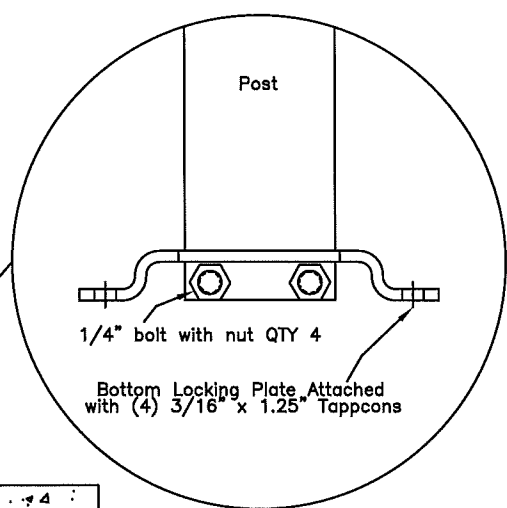
P/N 20963 TOP LOCK PLATE.



1/2" x 9" CARRIAGE HEAD BOLT WITH NUTS



7/16" PIN WITH KEEPER.



1/4" bolt with nut QTY 4  
Bottom Locking Plate Attached with (4) 3/16" x 1.25" Tappcons

STATE OF TEXAS  
 JOHN E. SCATES, P.E.  
 3121 FAIRGATE  
 CARROLLTON, TX  
 FL. P.E. # 51737  
 TX. P.E. # 56308, F-2203

PROFESSIONAL ENGINEER'S  
 SEAL PROVIDED ONLY FOR  
 VERIFICATION OF WINDLOAD  
 CONSTRUCTION DETAILS

NOTES: THIS DRAWING AND / OR TECHNICAL INFORMATION ON THIS SHEET IS THE PROPERTY OF MID-AMERICA DOOR COMPANY AND IS LOANED IN CONFIDENCE FOR ENGINEERING AND MUTUAL ASSISTANCE PURPOSES ONLY, AND MAY NOT BE REPRODUCED OR USED TO MANUFACTURE ANYTHING DISCLOSED HEREON WITHOUT THE EXPRESSED PERMISSION OF MID-AMERICA DOOR COMPANY.

Rev.	By	Date	Description	Rev.	By	Date	Description	SCALE	N.T.S.	DATE
0	BJR	2/24/04	NEW DRAWING	8				DRAWN BY	BJR	12-4-08
1	BJR	1/12/12	updated for 2010 Rev	9				INITIAL CHK.	BJR	"
2	BJR	7/26/12	updated NOTES	10				FINAL CHK.	JAR	"
3				11				ENGR.		"
4				12				APPR. BY	JAR	"
5				13						
6				14						
7				15						

<b>Mid-America Door Company</b> PONCA CITY, OK	
DESCRIPTION	WINDLOAD POST HARDWARE
TITLE	WINDLOAD CONSTRUCTION DETAILS
DWG. NO.	RCWL8-1607
SHT. OF	3 OF 3
REV.	2