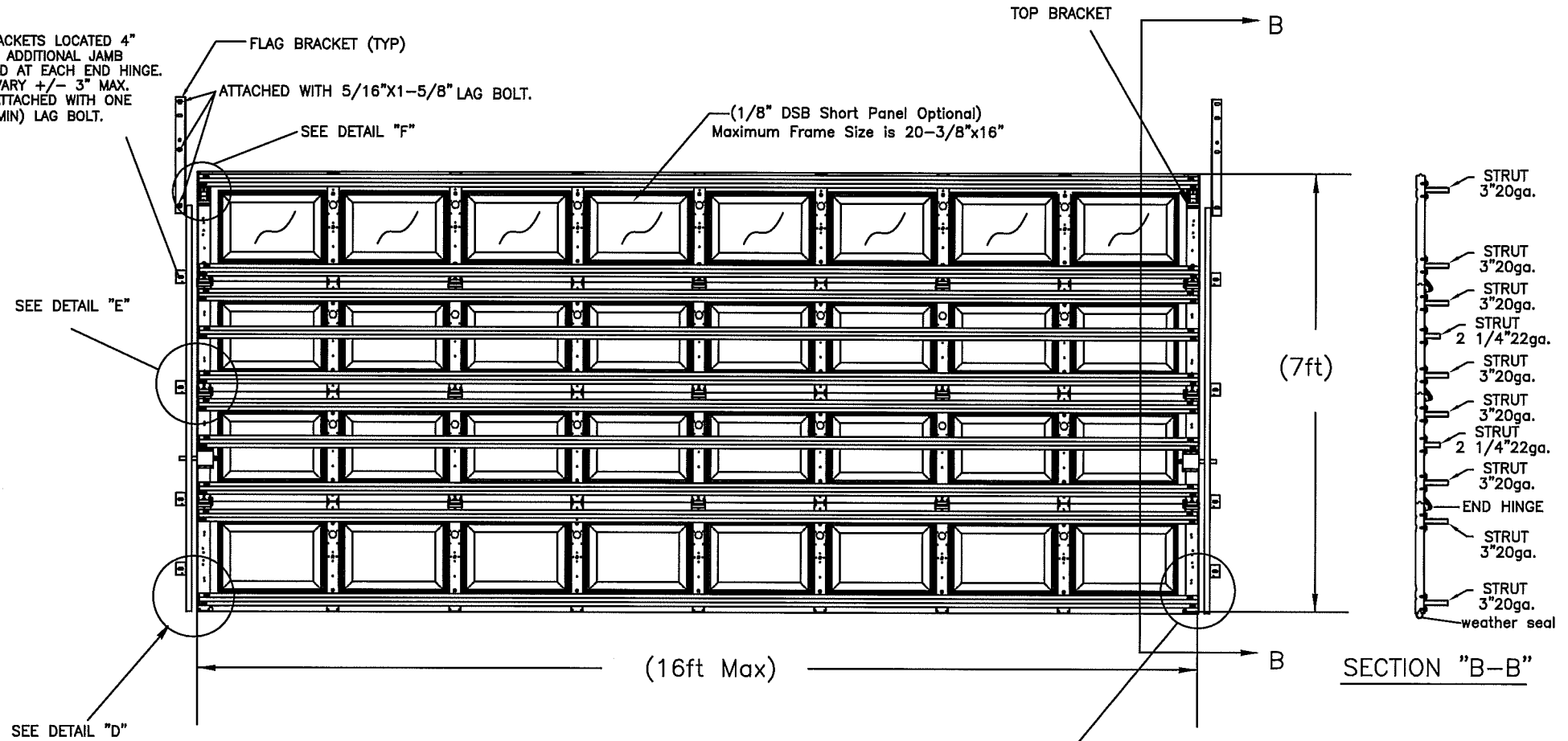


NOTES:

1. REGAL SHOWN, CELEBRITY, AMERICAN 100, CS, XL, CSX OR CSL SERIES MAY BE SUBSTITUTED.
2. STRUTS ATTACHED WITH 2 SELF DRILLING SCREWS 1/4"-20 X 3/4" AT EACH STILE LOCATION
3. 4 SECTION HIGH DOOR SHOWN (7FT) ,TALLER DOOR CONFIGURATIONS MAY BE CONSTRUCTED UP TO A MAXIMUM OF 14FT HIGH, USING SAME PANEL CONSTRUCTION AS SHOWN (MAXIMUM SECTION HEIGHT OF 21"). 8 SECTION HIGH DOORS REQUIRE HALF-INCLINED VERTICAL TRACK.
4. MINIMUM STEEL THICKNESS FOR SECTION IS 25 GA. (.0185").
5. SECTIONS EMBOSSED 14.00"x20.375" ,16" X20.375", 14"x41", 16"x40" OR SECTIONS WITHOUT EMBOSSEMENT MAY ALSO BE USED. (LOCATION AND QUANTITY OF CENTER STILES MUST BE THE SAME).
6. TORSION SPRINGS OR EXTENSION SPRINGS AVAILABLE.
7. LOCK MUST BE ATTACHED AT EACH SIDE OF THE DOOR. CAM & BAR LOCKS OR AN OPENER MAY BE SUBSTITUTED.
8. WOOD MOUNT SHOWN, STEEL AND MASONRY ANGLE AND REVERSE ANGLE MOUNT AVAILABLE. NUMBER OF JAMB BRACKET ANCHOR LOCATIONS MUST BE THE SAME.
9. JAMB DETAIL IN ACCORDANCE WITH DWG. # RCWL-0001
10. STRUT PLACEMENT SHOWN IS TYPICAL (STRUTS ARE OVER THE HINGES AS SHOWN USING THE HOLES PROVIDED IN THE HINGE) SEE DETAIL "E"
11. THIS DOOR HAS NOT BEEN TESTED FOR WIND-BORNE DEBRIS.
12. USE THIS DRAWING IN CONJUNCTION WITH INSTALLATION INSTRUCTIONS. WHERE THE DRAWING CONFLICTS WITH OTHER INSTALLATION INSTRUCTIONS, THIS DRAWING GOVERNS.

BOTTOM JAMB BRACKETS LOCATED 4" OFF THE FLOOR. ADDITIONAL JAMB BRACKETS LOCATED AT EACH END HINGE. PLACEMENT CAN VARY +/- 3" MAX. JAMB BRACKETS ATTACHED WITH ONE (5/16 X 1-1/2 MIN) LAG BOLT.

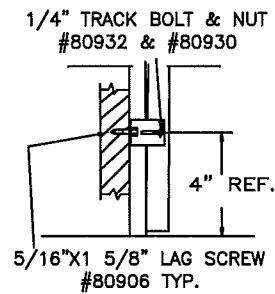


- STRUT 3"20ga.
- STRUT 3"20ga.
- STRUT 3"20ga.
- 2 1/4"22ga.
- STRUT 3"20ga.
- STRUT 3"20ga.
- 2 1/4"22ga.
- STRUT 3"20ga.
- STRUT 3"20ga.
- END HINGE
- STRUT 3"20ga.
- STRUT 3"20ga.
- weather seal

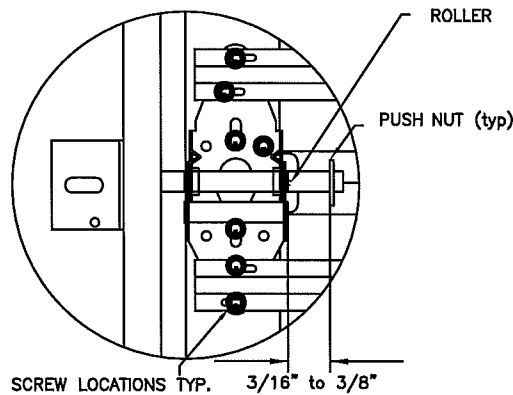
Strut Requirements

| # sections | # Struts | |
|------------|----------|----|
| | 2-1/4" | 3" |
| 4 | 2 | 8 |
| 5 | 3 | 10 |
| 6 | 4 | 12 |
| 7 | 5 | 14 |
| *8 | 6 | 16 |

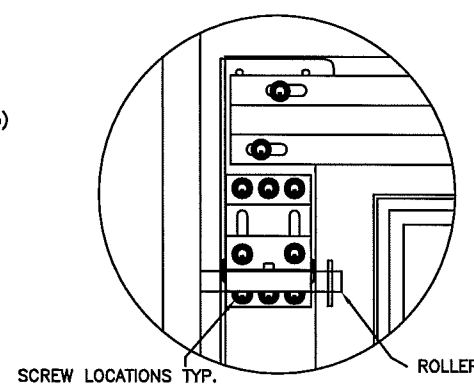
*SEE NOTE 4



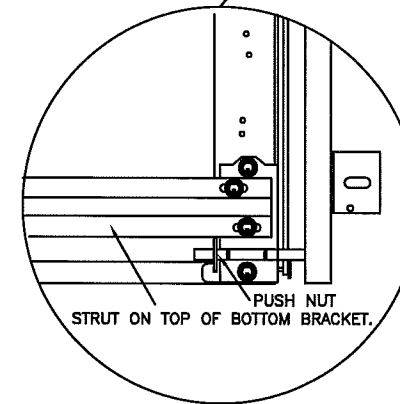
DETAIL D



DETAIL E



DETAIL F



PROFESSIONAL ENGINEER'S SEAL PROVIDED ONLY FOR VERIFICATION OF WINDLOAD CONSTRUCTION DETAILS

JOHN E. SCATES, P.E.
3121 FAIRGATE
CARROLLTON, TX
FL. P.E. # 51737
TX. P.E. # 56308, F-2203

5/6/12

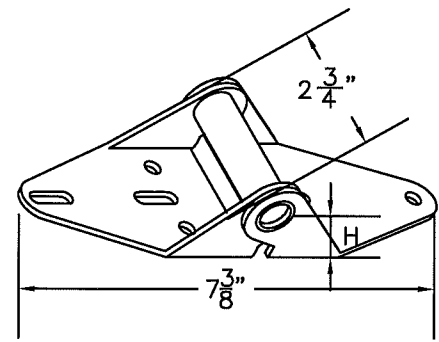
DESIGN LOAD +30/-33.5

This product was tested/evaluated in accordance with ANSI/DASMA 108-05

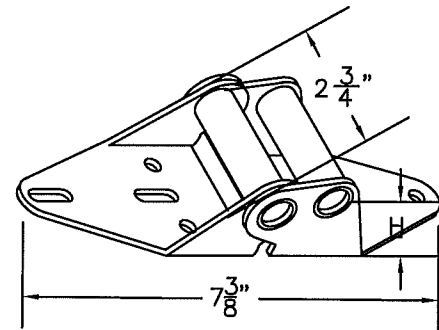
NOTES: THIS DRAWING AND / OR TECHNICAL INFORMATION ON THIS SHEET IS THE PROPERTY OF MID-AMERICA DOOR COMPANY AND IS LOANED IN CONFIDENCE FOR ENGINEERING AND MUTUAL ASSISTANCE PURPOSES ONLY, AND MAY NOT BE REPRODUCED OR USED TO MANUFACTURE ANYTHING DISCLOSED HEREON WITHOUT THE EXPRESSED PERMISSION OF MID-AMERICA DOOR COMPANY.

| Rev. | By | Date | Description | Rev. | By | Date | Description | SCALE | N.T.S. | DATE |
|------|----|---------|----------------------|------|----|------|-------------|-----------------|--------|---------|
| 0 | mm | 5/2/08 | NEW DRAWING | 8 | | | | DRAWN BY | BJR | 05-5-08 |
| 1 | mm | 1/12/12 | updated for 2010 fee | 9 | | | | INITIAL CHK. TL | | 05-5-08 |
| 2 | mm | 7/26/12 | updated NOTES | 10 | | | | FINAL CHK. | | |
| 3 | | | | 11 | | | | ENGR. | | |
| 4 | | | | 12 | | | | APPR. BY | | |
| 5 | | | | 13 | | | | | | |
| 6 | | | | 14 | | | | | | |
| 7 | | | | 15 | | | | | | |

| | | |
|---|------------------------|---------------------|
| Mid-America Door Company | | PNCA CITY, OK |
| DESCRIPTION REGAL/ CELEBRITY WINDLOAD SERIES | | |
| TITLE WINDLOAD CONSTRUCTION DETAILS | DWG. NO. RCWL6-1607 | SHT. REV. 1 OF 2 |

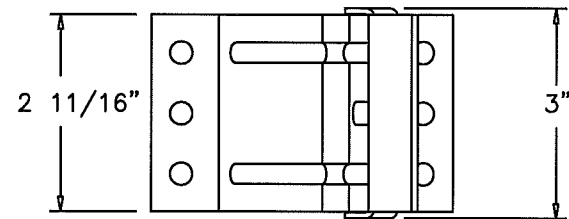


P/N 20602 (#1 HINGE)

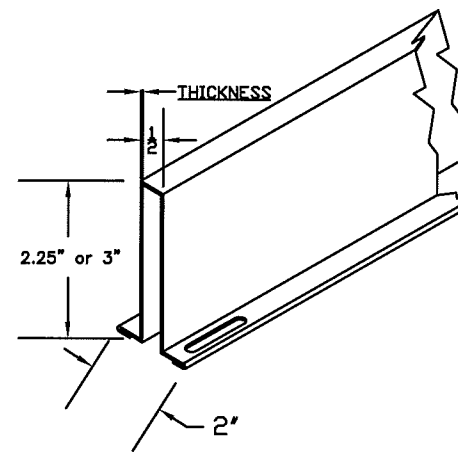
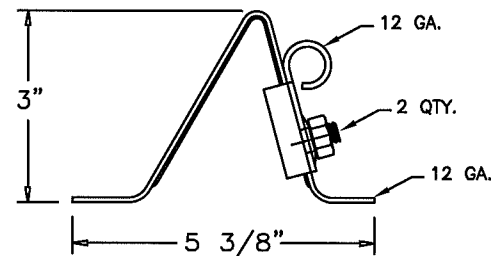


END HINGE

| HINGE # | GAGE # | "H" | PART NUMBER |
|---------|--------|--------|-------------|
| 1 | 14 | 3/4" | 20602 |
| 2 | 14 | 1" | 20606 |
| 3 | 14 | 1 1/4" | 20610 |
| 4 | 14 | 1 1/2" | 20614 |
| 5 | 14 | 1 3/4" | 20616 |
| 6 | 13 | 2" | 20618 |

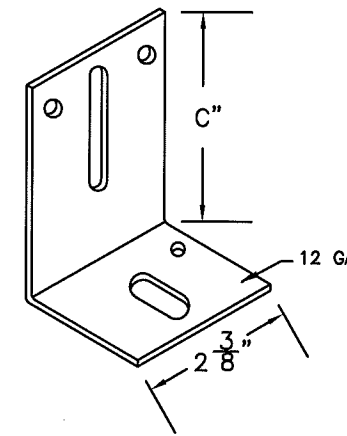


P/N 20358 TOP FIXTURE



STRUTS

| THICKNESS OF STRUTS ARE AS STATED BELOW | | |
|---|-------------------------------|------------|
| 2.25" | 22 GAUGE 33 KSI MINIMUM YIELD | .028" MIN. |
| 3" | 20 GAUGE 50 KSI MINIMUM YIELD | .036" MIN. |

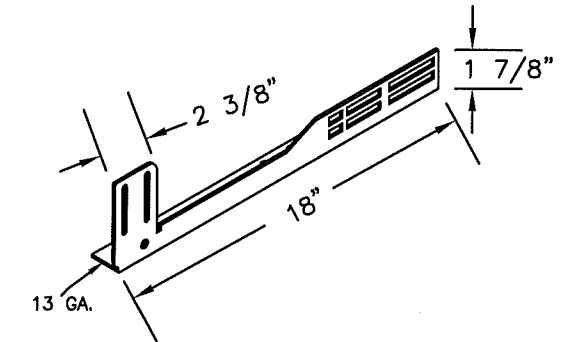


TRACK BRACKET

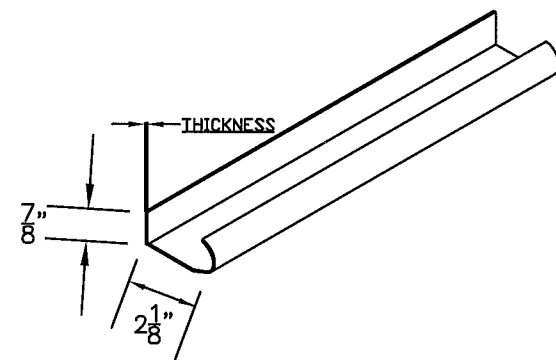
| BRACKET # | "C" | PART NUMBER |
|-----------|--------|-------------|
| 4 | 3" | 20368 |
| 5 | 3 1/4" | 20370 |
| 6 | 3 1/2" | 20372 |
| 7 | 3 3/4" | 20374 |
| 8 | 4" | 20376 |
| 9 | 4 3/4" | 20378 |

NOTES:

- STRUTS ARE NOT MORE THAN 1 1/2" SHORTER THAN SECTION.
- USE IN CONJUNCTION WITH INSTALLATION INSTRUCTIONS. WHERE THE DRAWING CONFLICTS WITH OTHER INSTALLATION INSTRUCTIONS, THIS DRAWING GOVERNS.

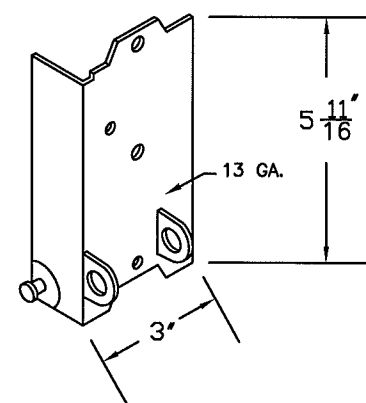


20366 & 7 FLAG BRACKET

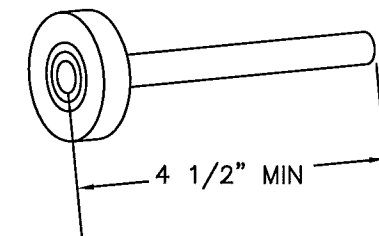


WINDLOAD TRACK

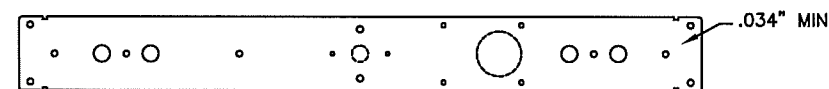
| THICKNESS OF TRACK IS AS STATED BELOW | | |
|---------------------------------------|-----------|--|
| VERTICAL TRACK IS MIN. 16 GA. | .058" MIN | |
| HORIZONTAL TRACK IS MIN. 16 GA. | .058" MIN | |



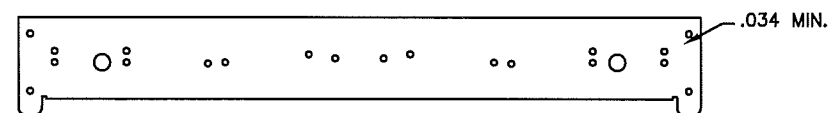
P/N 20334&5 BOTTOM BRKT.



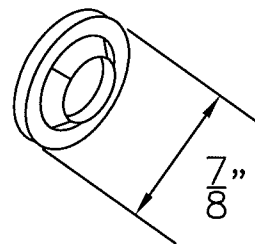
P/N 20804 SHORT STEM 10 BALL ROLLER



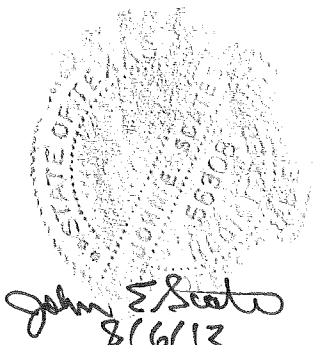
P/N 10455 & 10465 (21" & 18") CENTER STILE



P/N 10450 & 10460 (21" & 18") END STILE



P/N 20239 PUSH NUT



PROFESSIONAL ENGINEER'S SEAL PROVIDED ONLY FOR VERIFICATION OF WINDLOAD CONSTRUCTION DETAILS

JOHN E. SCATES, P.E.
3121 FAIRGATE
CARROLLTON, TX
FL. P.E. # 51737
TX. P.E. # 56308, F-2203

NOTES: THIS DRAWING AND / OR TECHNICAL INFORMATION ON THIS SHEET IS THE PROPERTY OF MID-AMERICA DOOR COMPANY AND IS LOANED IN CONFIDENCE FOR ENGINEERING AND MUTUAL ASSISTANCE PURPOSES ONLY, AND MAY NOT BE REPRODUCED OR USED TO MANUFACTURE ANYTHING DISCLOSED HEREON WITHOUT THE EXPRESSED PERMISSION OF MID-AMERICA DOOR COMPANY.

| Rev. | By | Date | Description | Rev. | By | Date | Description | SCALE | N.T.S. | DATE |
|------|-----|---------|----------------------|------|----|------|-------------|-----------------|--------|--------|
| 0 | BJR | 5/5/08 | NEW DRAWING | 8 | | | | | | |
| 1 | BJR | 1/18/12 | updated for 2010 Sta | 9 | | | | DRAWN BY | BJR | 5-5-08 |
| 2 | BJR | 7/26/12 | updated FIRST BRKT | 10 | | | | INITIAL CHK. TL | | 5-5-08 |
| 3 | | | | 11 | | | | FINAL CHK. | | |
| 4 | | | | 12 | | | | ENGR. | | |
| 5 | | | | 13 | | | | APPR. BY | | |
| 6 | | | | 14 | | | | | | |
| 7 | | | | 15 | | | | | | |

| | | | |
|---|--|------------------------|-------------------|
| Mid-America Door Company | | PONCA CITY, OK | |
| DESCRIPTION WINDLOAD SERIES HARDWARE | | | |
| TITLE WINDLOAD CONSTRUCTION DETAILS | | DWG. NO. RCWL6-1607 | SHT. OF 2 OF 2 |