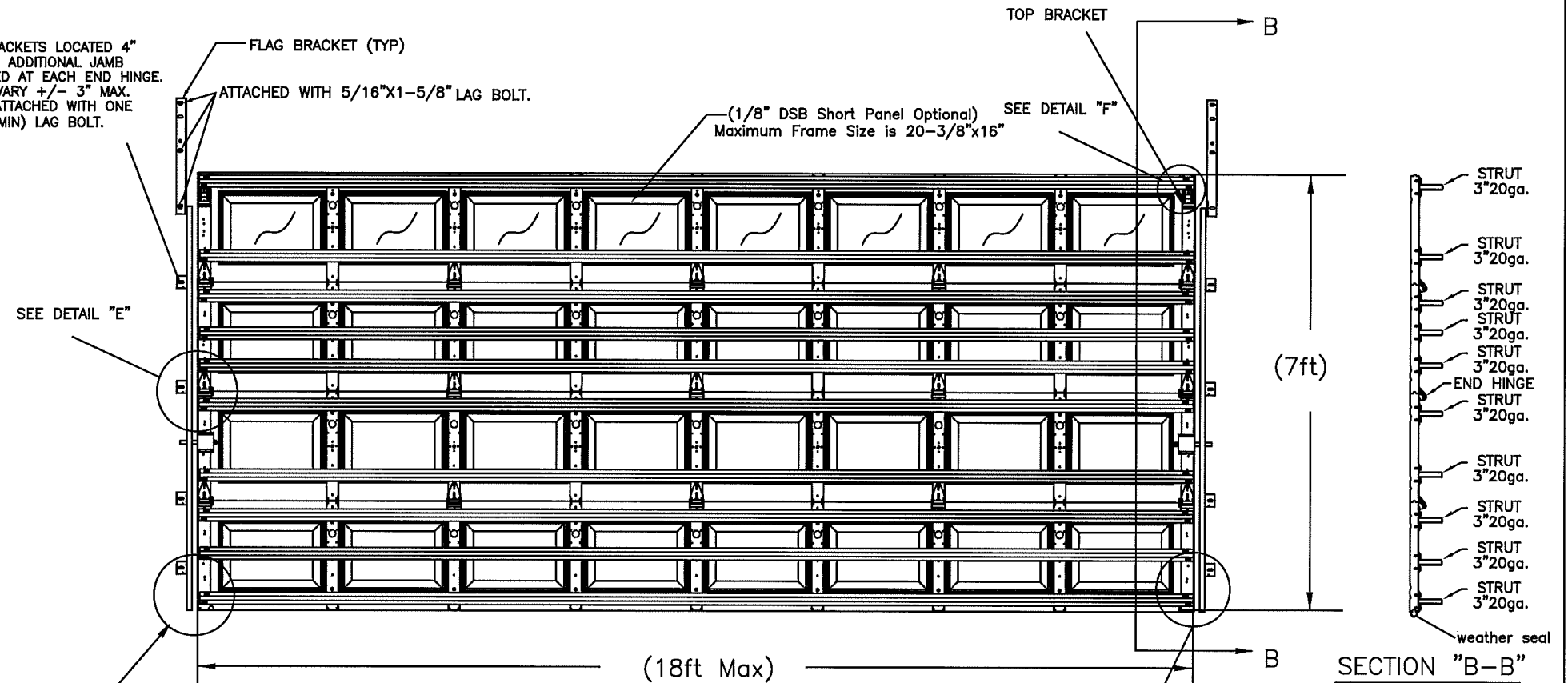


NOTES:

- REGAL SHOWN, CELEBRITY, AMERICAN 100, CS, XL, CSX OR CSL SERIES MAY BE SUBSTITUTED.
- STRUTS ATTACHED WITH 2 SELF DRILLING SCREWS 1/4"-20 X 3/4" AT EACH STILE LOCATION
- 4 SECTION HIGH DOOR SHOWN ( 7FT) ,TALLER DOOR CONFIGURATIONS MAY BE CONSTRUCTED UP TO A MAXIMUM OF 14FT HIGH, USING SAME PANEL CONSTRUCTION AS SHOWN (MAXIMUM SECTION HEIGHT OF 21").
- MINIMUM STEEL THICKNESS FOR SECTION IS 25 GA. (.0185").
- SECTIONS EMBOSSED 14.00"x20.375" ,16" X20.375", 14"x41", 16"x40" OR SECTIONS WITHOUT EMBOSSEMENT MAY ALSO BE USED. (LOCATION AND QUANTITY OF CENTER STILES MUST BE THE SAME).
- TORSION SPRINGS OR EXTENSION SPRINGS AVAILABLE.
- LOCK MUST BE ATTACHED AT EACH SIDE OF THE DOOR. CAM & BAR LOCKS OR AN OPENER MAY BE SUBSTITUTED.
- WOOD MOUNT SHOWN, STEEL AND MASONRY ANGLE AND REVERSE ANGLE MOUNT AVAILABLE. NUMBER OF JAMB BRACKET ANCHOR LOCATIONS MUST BE THE SAME.
- JAMB DETAIL IN ACCORDANCE WITH DWG. # RCWL-0001
- THIS DOOR HAS NOT BEEN TESTED FOR WIND-BORNE DEBRIS.
- USE THIS DRAWING IN CONJUNCTION WITH INSTALLATION INSTRUCTIONS. WHERE THE DRAWING CONFLICTS WITH OTHER INSTALLATION INSTRUCTIONS, THIS DRAWING GOVERNS.

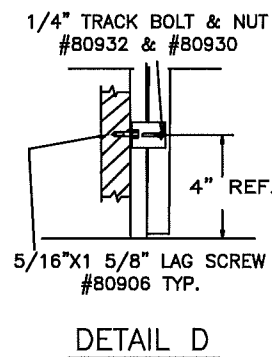
BOTTOM JAMB BRACKETS LOCATED 4" OFF THE FLOOR. ADDITIONAL JAMB BRACKETS LOCATED AT EACH END HINGE. PLACEMENT CAN VARY +/- 3" MAX. JAMB BRACKETS ATTACHED WITH ONE (5/16 X 1-1/2 MIN) LAG BOLT.



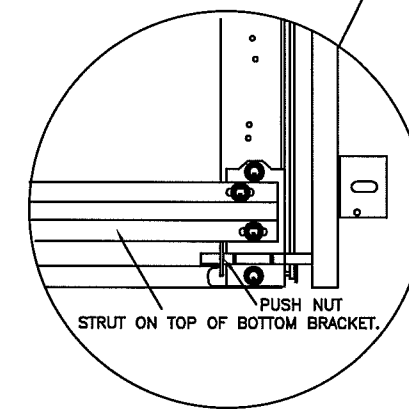
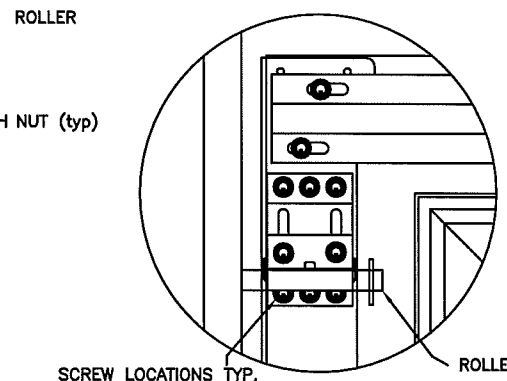
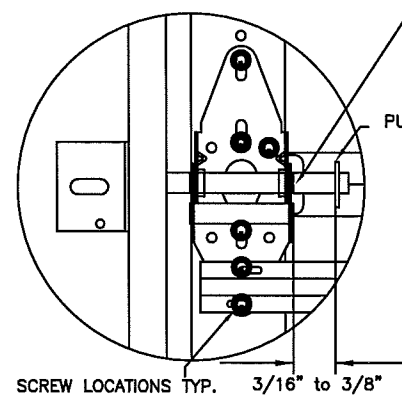
Strut Requirements

# sections	# Struts
	3"
4	10
5	13
6	15
7	18
*8	20

\*SEE NOTE 4



SEE DETAIL "D"



PROFESSIONAL ENGINEER'S SEAL PROVIDED ONLY FOR VERIFICATION OF WINDLOAD CONSTRUCTION DETAILS

JOHN E. SCATES, P.E.  
3121 FAIRGATE  
CARROLLTON, TX  
FL. P.E. # 51737  
TX. P.E. # 58308, F-2203

8/6/12

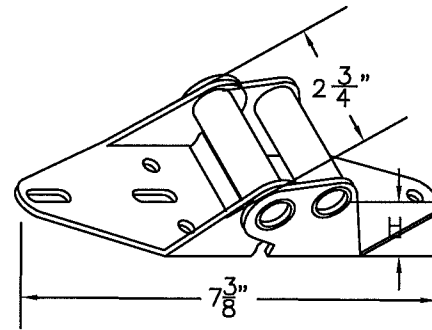
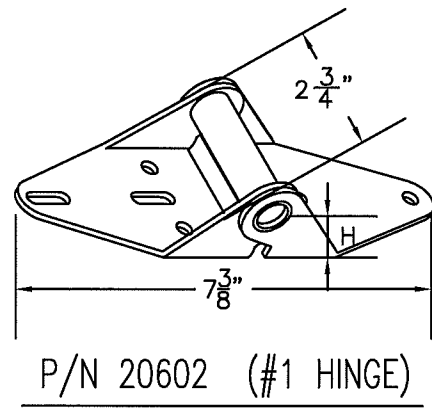
DESIGN LOAD +26/-28.8

This product was tested/evaluated in accordance with ANSI/DASMA 108-05

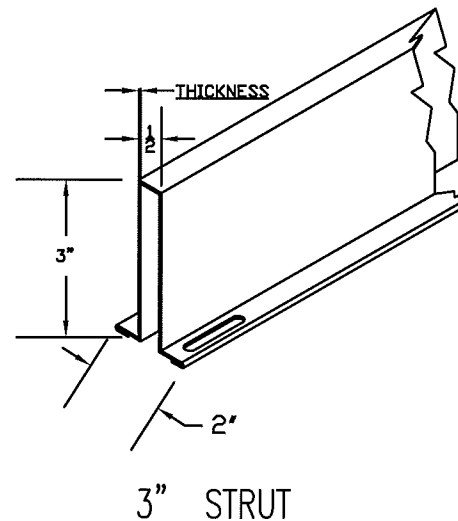
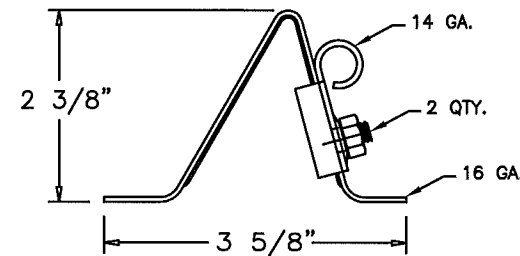
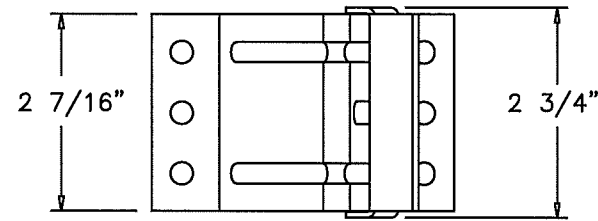
NOTES: THIS DRAWING AND / OR TECHNICAL INFORMATION ON THIS SHEET IS THE PROPERTY OF MID-AMERICA DOOR COMPANY AND IS LOANED IN CONFIDENCE FOR ENGINEERING AND MUTUAL ASSISTANCE PURPOSES ONLY, AND MAY NOT BE REPRODUCED OR USED TO MANUFACTURE ANYTHING DISCLOSED HEREON WITHOUT THE EXPRESSED PERMISSION OF MID-AMERICA DOOR COMPANY.

Rev.	By	Date	Description	Rev.	By	Date	Description	SCALE	N.T.S.	DATE
0	BJR	4/25/04	NEW DRAWING	8						
1	BJR	1/12/12	updated for 2010 Sto	9				DRAWN BY	BJR	04-25-08
2	BJR	7/26/12	updated NOTES	10				INITIAL CHK. T.L.		
3				11				FINAL CHK.		
4				12				ENGR.		
5				13				APPR. BY		
6				14						
7				15						

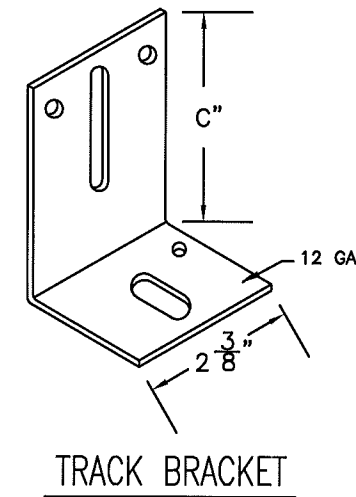
DESCRIPTION		Mid-America Door Company		PONCA CITY, OK
TITLE		REGAL/ CELEBRITY WINDLOAD SERIES		
DWG. NO.		RCWL5-1807		
SHT. OF		1 OF 2		
REV.		2		



HINGE #	GAGE #	"H"	PART NUMBER
1	14	3/4"	20602
2	14	1"	20606
3	14	1 1/4"	20610
4	14	1 1/2"	20614
5	14	1 3/4"	20616
6	13	2"	20618



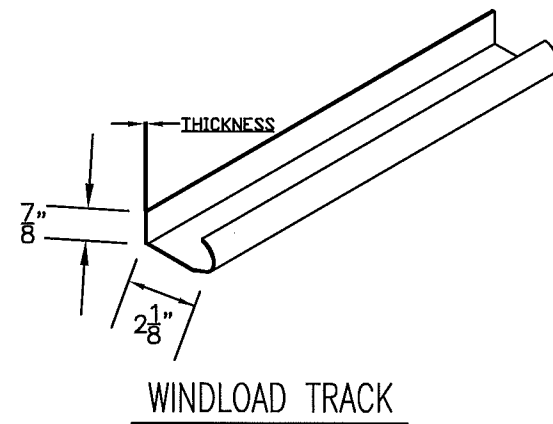
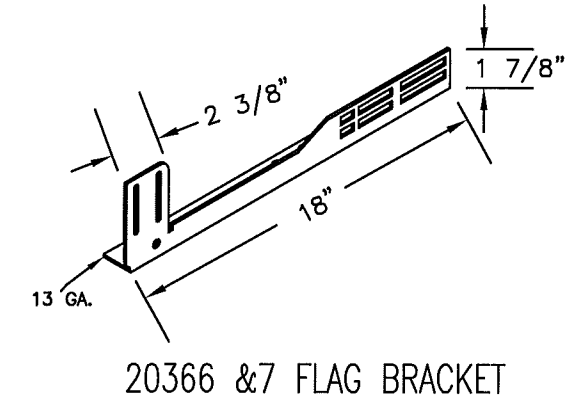
THICKNESS OF STRUTS ARE AS STATED BELOW	
3" 20 GAUGE 50 KSI MINIMUM YIELD	.036" MIN.



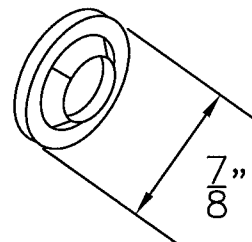
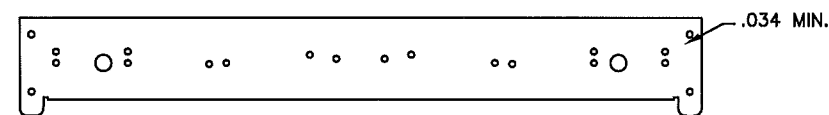
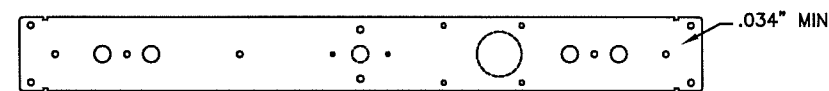
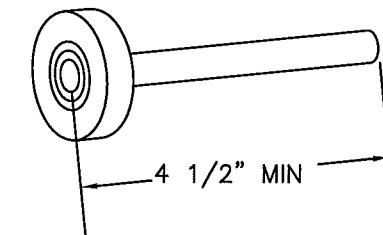
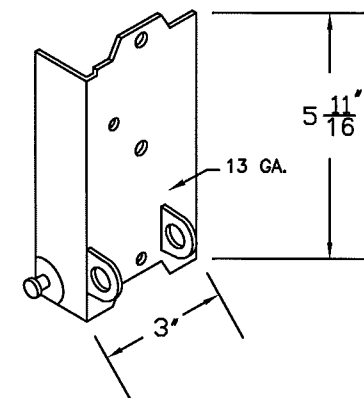
BRACKET #	"C"	PART NUMBER
4	3"	20368
5	3 1/4"	20370
6	3 1/2"	20372
7	3 3/4"	20374
8	4"	20376
9	4 3/4"	20378

NOTES:

- STRUTS ARE NOT MORE THAN 1 1/2" SHORTER THAN SECTION.
- USE IN CONJUNCTION WITH INSTALLATION INSTRUCTIONS. WHERE THE DRAWING CONFLICTS WITH OTHER INSTALLATION INSTRUCTIONS, THIS DRAWING GOVERNS.



THICKNESS OF TRACK IS AS STATED BELOW	
VERTICAL TRACK IS MIN. 16 GA.	.058" MIN
HORIZONTAL TRACK IS MIN. 16 GA.	.058" MIN



NOTES: THIS DRAWING AND / OR TECHNICAL INFORMATION ON THIS SHEET IS THE PROPERTY OF MID-AMERICA DOOR COMPANY AND IS LOANED IN CONFIDENCE FOR ENGINEERING AND MUTUAL ASSISTANCE PURPOSES ONLY, AND MAY NOT BE REPRODUCED OR USED TO MANUFACTURE ANYTHING DISCLOSED HEREON WITHOUT THE EXPRESSED PERMISSION OF MID-AMERICA DOOR COMPANY.

Rev.	By	Date	Description	Rev.	By	Date	Description
0	BJR	4/25/08	NEW DRAWING	8			
1	BJR	1/15/13	updated for 2010 spec	9			
2	BJR	7/26/13	updated NOTES	10			
3				11			
4				12			
5				13			
6				14			
7				15			

PROFESSIONAL ENGINEER'S SEAL PROVIDED ONLY FOR VERIFICATION OF WINDLOAD CONSTRUCTION DETAILS

Professional Engineer Seal: JOHN E. SCATES, P.E. 3121 FAIRGATE CARROLLTON, TX FL. P.E. # 51737 TX. P.E. # 56308, F-2203

Signature: John E. Scates 8/6/12

Mid-America Door Company		PONCA CITY, OK	
DESCRIPTION: WINDLOAD SERIES HARDWARE			
TITLE: WINDLOAD CONSTRUCTION DETAILS		DWG. NO.: RCWL5-1807	SHT. 2 OF 2
DATE: 7-23-08		SCALE: N.T.S.	REV. 2