

THE METHOD OF TESTING WAS IN SUBSTANTIAL CONFORMANCE WITH THE PROCEDURES DESCRIBED IN DASMA 108. THE PRESSURES SHOWN ON THE DRAWINGS WERE CALCULATED USING ASCE 7-98/02/05 WITH THE FOLLOWING PARAMETERS (5 FEET OF DOOR WIDTH IN END ZONE, ROOF AT ANY SLOPE, AND I=1.0):

WIND SPEED (MPH)	130	118	112	107	103
EXPOSURE LEVEL	B	C	C	D	D
MEAN ROOF HEIGHT	30'	15'	25'	15'	25'

REV	DESCRIPTION OF REVISIONS	DATE	BY

MAX SIZE 16'2 x 14'

DESIGN LOADS
+25.3 PSF
-28.7 PSF

TEST LOADS
+38.0 PSF
-43.1 PSF

Thomas L. Shelmerdine, PE (TX PE #85829)
Structural Solutions, PA (TX Firm #004063)

STATE OF TEXAS
THOMAS L. SHELMERDINE
85829
LICENSED PROFESSIONAL ENGINEER
TX

5921-G W. Friendly Ave., Greensboro, NC 27410

ENTRE//MATIC

165 CARRIAGE COURT WINSTON-SALEM, N.C. 27105

MODEL #1480 CARRIAGE COURT

SIZE	DRAWN BY	RLR	DATE	11/20/14	DRAWING NUMBER
B	CHECKED BY	RLR	DATE	11/20/14	IRC-1416-130-15

SHEET 1 OF 3

TABLE 1

DOOR HEIGHT	TRACK ATTACHMENT									TYPICAL SPLICE
	A	B	C	D	E	F	G	H	I	
7' 0"	10.0"	21"	39"	57"						76"
7' 6"	10.0"	21"	39"	57"	75"					82"
8' 0"	10.0"	21"	39"	57"	75"					88"
9' 0"	10.0"	21"	39"	57"	75"	93"				100"
9' 6"	10.0"	21"	39"	57"	75"	93"				106"
10' 0"	10.0"	21"	39"	57"	75"	93"				112"
11' 0"	10.0"	21"	39"	57"	75"	93"	111"			124"
12' 0"	10.0"	21"	39"	57"	75"	93"	111"	129"		136"
13' 0"	10.0"	21"	39"	57"	75"	93"	111"	129"		148"
14' 0"	10.0"	21"	39"	57"	75"	93"	111"	129"	147"	160"

ALL TRACK ATTACHMENT SPACING +/-2" ALLOWED WITH SPF OR SYP NO. 2 OR BETTER ONLY

WOOD JAMB ATTACHMENT TO STRUCTURE (OPTIONAL)

2 X 6 VERTICAL JAMB ATTACHMENT TO WOOD FRAME STRUCTURE

5/16" X 3" LAG SCREWS STARTING 6" FROM ENDS THEN 24" O.C. (1 1/2" EMBEDMENT)

2 X 6 VERTICAL JAMB ATTACHMENT TO 2,000 PSI CONCRETE

HILTI KWIK BOLT 3/8" X 4" STARTING 6" FROM ENDS THEN 24" O.C. (2 1/2" EMBEDMENT)

HILTI SLEEVE ANCHOR 3/8" X 2-3/4" STARTING 6" FROM ENDS THEN 20" O.C. (1 1/4" EMBEDMENT)

ITW/RAMSET REDHEAD (TRU-BOLT) 3/8" X 4" STARTING 6" FROM ENDS THEN 24" O.C. (2 1/2" EMBEDMENT)

2 X 6 VERTICAL JAMB ATTACHMENT TO HOLLOW C-90 BLOCK

SIMPSON 1/4" X 3" TITEN SCREWS STARTING 6" FROM ENDS, USE PAIRS OF FASTENERS (3" APART)

AT 16" O.C. (1 1/2" EMBEDMENT)

HILTI 1/4" X 2-3/4" KWIK-CON II+ SCREWS STARTING 6" FROM ENDS, USE PAIRS OF FASTENERS (3" APART) AT 16" O.C. (1 1/4" EMBEDMENT)

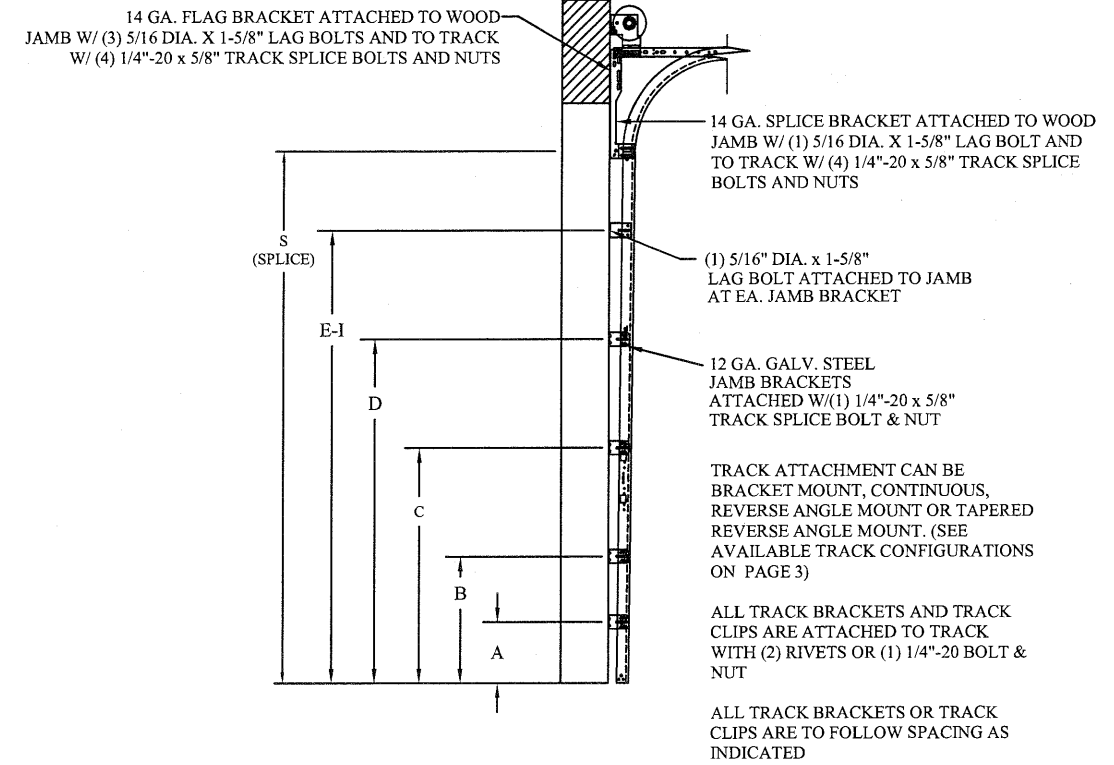
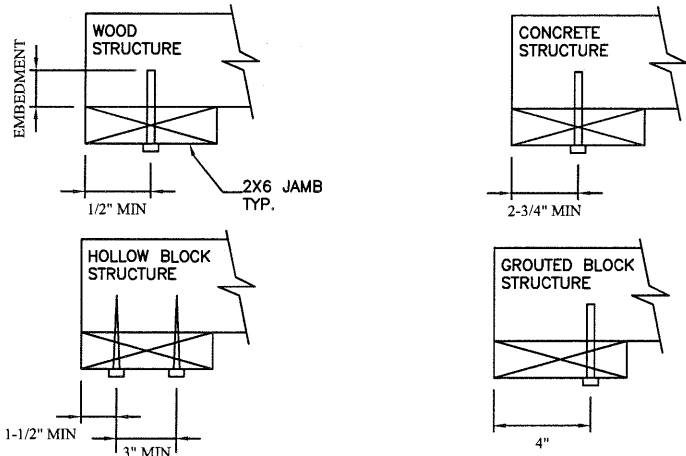
2 X 6 VERTICAL JAMB ATTACHMENT TO GROUTED C-90 BLOCK (2000 PSI GROUT)

HILTI SLEEVE ANCHOR 3/8" X 2-3/4" STARTING 6" FROM ENDS THEN 24" O.C. (1 1/4" EMBEDMENT)

(OR, USE FASTENERS FOR HOLLOW C-90 BLOCK)

*LAGS AND BOLTS CAN BE COUNTERSUNK TO PROVIDE A FLUSH MOUNTING SURFACE.

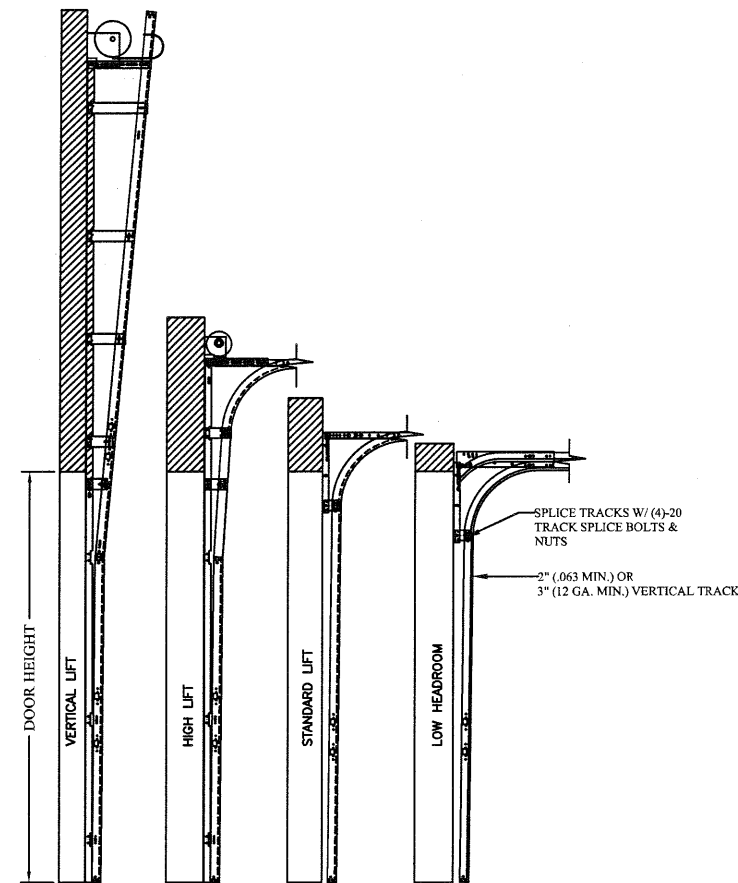
*PREPARATION OF WOOD JAMBS BY OTHERS



TRACK CONFIGURATION FOR 8' TALL DOORS

N.T.S.

SEE TABLE 1 FOR TRACK ATTACHMENT SPACING



AVAILABLE TRACK CONFIGURATIONS N.T.S.

REV	DESCRIPTION OF REVISIONS	DATE	BY

MAX SIZE 16'2 x 14'

DESIGN LOADS +25.3 PSF -28.7 PSF

TEST LOADS +38.0 PSF -43.1 PSF

Thomas L. Shelmerdine, PE (TX PE #85829) Structural Solutions, PA (TX Firm #F-004063)

STATE OF TEXAS
THOMAS L. SHELMERDINE
85829
LICENSED PROFESSIONAL ENGINEER
TX

5921-G W. Friendly Ave., Greensboro, NC 27410

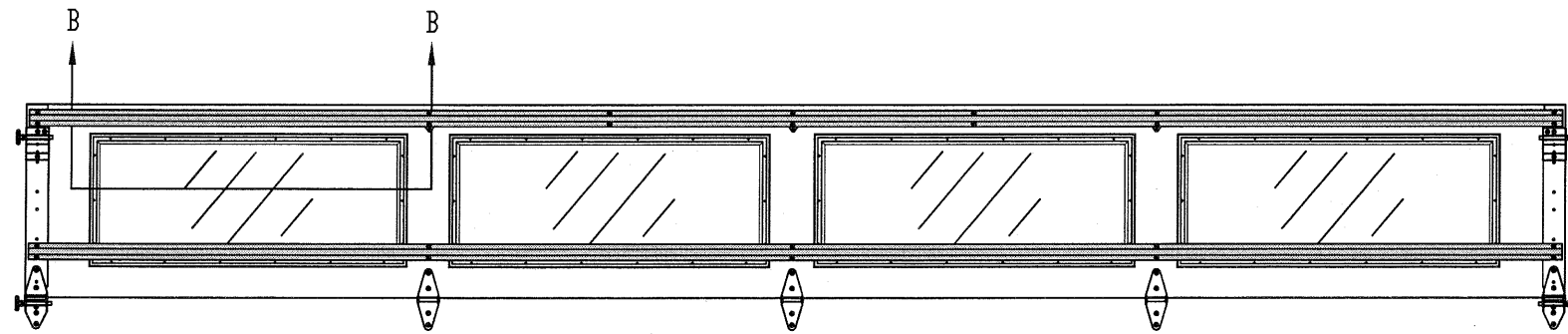
ENTRE//MATIC

165 CARRIAGE COURT WINSTON-SALEM, N.C. 27105

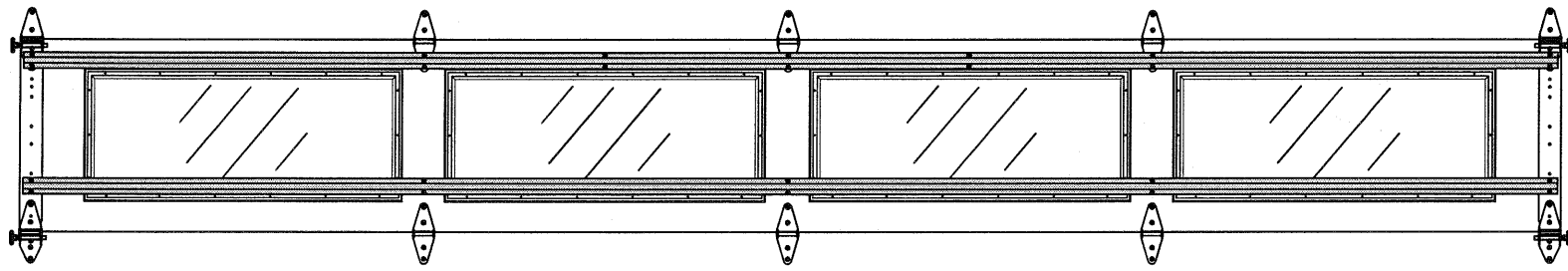
MODEL #1480 CARRIAGE COURT

SIZE	DRAWN BY RLR	DATE 11/20/14	DRAWING NUMBER
B	CHECKED BY RLR	DATE 11/20/14	IRC-1416-130-15

SHEET 2 OF 3



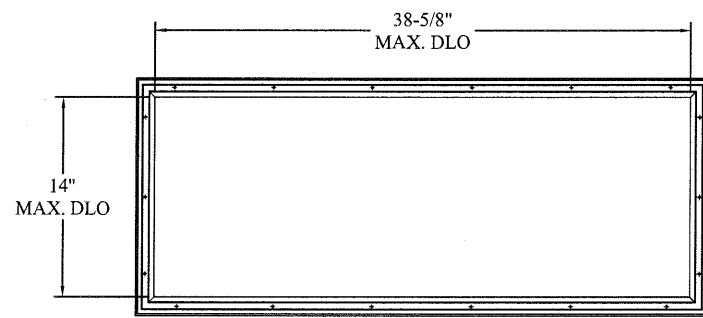
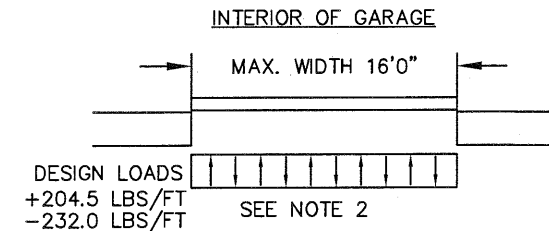
OPTIONAL GLAZED TOP SECTION W/ LONG PANEL 1480 (Carrriage Court) WINDOWS AND STRUT LAYOUT
N.T.S.



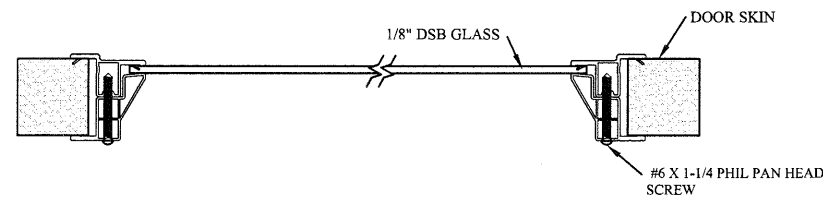
OPTIONAL GLAZED INTERMEDIATE SECTION W/ LONG PANEL 1480 (Carrriage Court) WINDOWS AND STRUT LAYOUT
N.T.S.

SPECIFICATIONS AND NOTES

1. ALL THE LOAD FROM THE DOOR IS TRANSFERRED TO THE VERTICAL TRACK, FROM THE TRACK THE LOAD IS TRANSFERRED TO THE VERTICAL JAMBS. THE HORIZONTAL JAMB OR HEADER RECEIVES NO PORTION OF THE LOAD TRANSFERRED FROM THE DOOR.
2. EACH VERTICAL JAMBS RECEIVES MAXIMUM DESIGN LOADS OF: +204.5 LBS/FT & -232.0 LBS/FT
3. DOOR AND HARDWARE WILL BE DESIGNED, MANUFACTURED AND INSTALLED WITH STANDARDS AS SET FORTH BY DASMA.
4. DOOR SECTIONS SHALL BE 27 GA. (.015) MIN. EXTERIOR SKIN ROLLED FORMED, W/ BAKED ON POLYESTER FINISH
5. DOORS UP TO 14'0" HIGH HAVE (2) 3" 20GA STRUTS PER SECTION
6. SUPPORTING STRUCTURAL ELEMENTS SHALL BE DESIGNED BY A REGISTERED PROFESSIONAL ENGINEER FOR WIND LOADS INDICATED ON THIS DRAWING IN ADDITION TO OTHER LOADINGS.



LONG PANEL 1480 (Carrriage Court) GLAZING FASTENER DETAIL
N.T.S.



SECTION B-B LONG PANEL 1480 (Carrriage Court) WINDOW DETAIL
N.T.S. (GLAZING MEETS ASTM E1300-04)

TABLE 2

Section Width (ft)	Center Stile Locations (Measured from Left Edge)			Max Design Loads Allowed	
	1st (in)	2nd (in)	3rd (in)	Positive (PSF)	Negative (PSF)
12' 4"	51.084	96.916	-	25.1	28.5
12' 6"	51.170	98.830	-	24.7	28.0
12' 8"	52.100	99.900	-	24.4	27.7
12' 10"	53.100	100.900	-	24.2	27.4
13' 0"	54.100	101.900	-	23.9	27.1
13' 2"	55.1	102.9	-	23.7	26.9
13' 4"	54.900	105.100	-	23.2	26.3
13' 6"	55.900	106.100	-	23.0	26.1
13' 8"	56.625	107.375	-	22.7	25.7
13' 10"	57.170	108.830	-	22.4	25.4
14' 0"	58.625	109.375	-	22.3	25.3
14' 2"	59.2	110.8	-	22.0	24.9
14' 4"	60.170	111.830	-	21.8	24.7
14' 6"	61.170	112.830	-	21.6	24.5
14' 8"	44.812	88.000	131.188	27.7	31.4
14' 10"	45.600	89.000	132.400	27.4	31.1
15' 0"	46.600	90.000	133.400	27.1	30.7
15' 2"	47.6	91.0	134.4	26.8	30.4
15' 4"	47.250	92.000	136.750	26.5	30.1
15' 6"	47.600	93.000	138.400	26.2	29.7
15' 8"	48.600	94.000	139.400	25.9	29.4
15' 10"	49.167	95.000	140.833	25.7	29.1
16' 0"	50.600	96.000	141.400	25.4	28.8
16' 2"	51.2	97.0	142.8	25.3	28.7

REV	DESCRIPTION OF REVISIONS	DATE	BY

MAX SIZE
16'2 x 14'

DESIGN LOADS
+25.3 PSF
-28.7 PSF

TEST LOADS
+38.0 PSF
-43.1 PSF

Thomas L. Shelmerdine, PE (TX PE #85829)
Structural Solutions, PA (TX Firm #F-004063)

STATE OF TEXAS
THOMAS L. SHELMEBDINE
85829
LICENSED PROFESSIONAL ENGINEER
TX

5921-G W. Friendly Ave., Greensboro, NC 27410

ENTRE//MATIC

165 CARRIAGE COURT WINSTON-SALEM, N.C. 27105

MODEL #1480 CARRIAGE COURT

SIZE	DRAWN BY	RLR	DATE	11/20/14	DRAWING NUMBER
B	CHECKED BY	RLR	DATE	11/20/14	IRC-1416-130-15

SHEET 3 OF 3