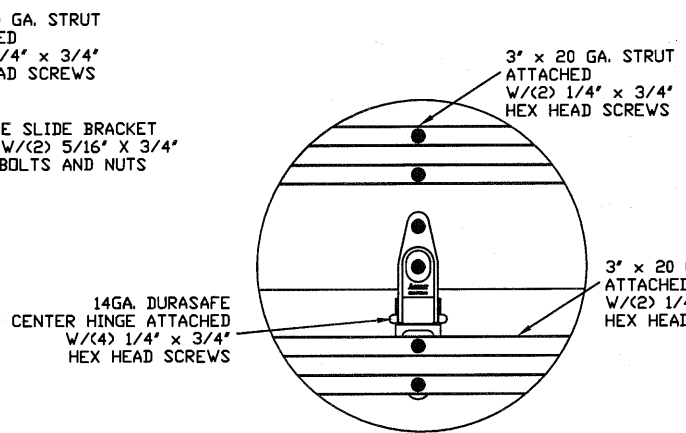
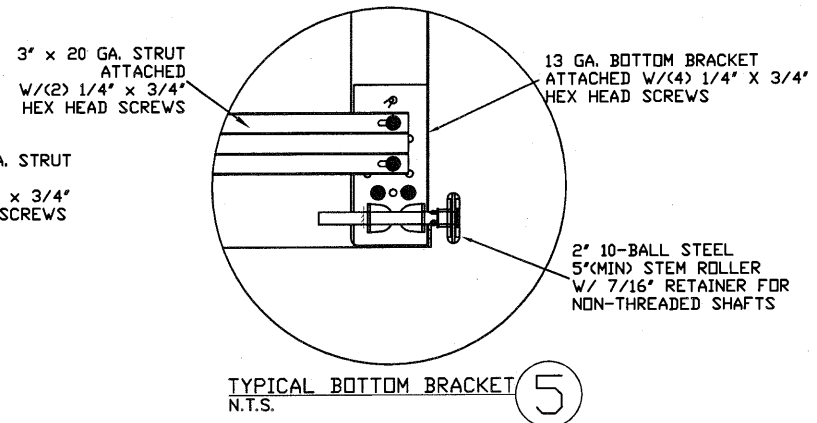


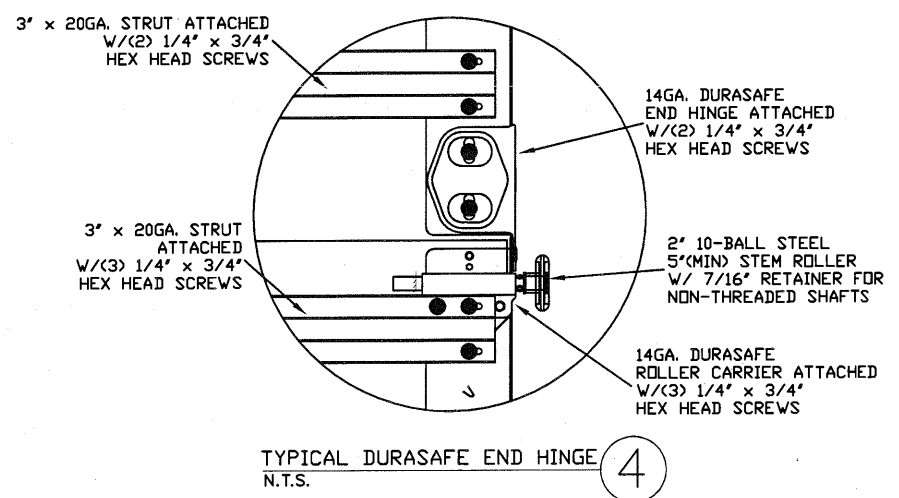
TYPICAL TOP FIXTURES
N.T.S.



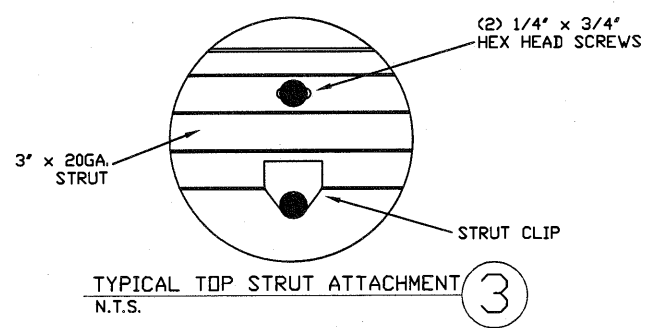
TYPICAL DURASAFE CENTER HINGE
N.T.S.



TYPICAL BOTTOM BRACKET
N.T.S.



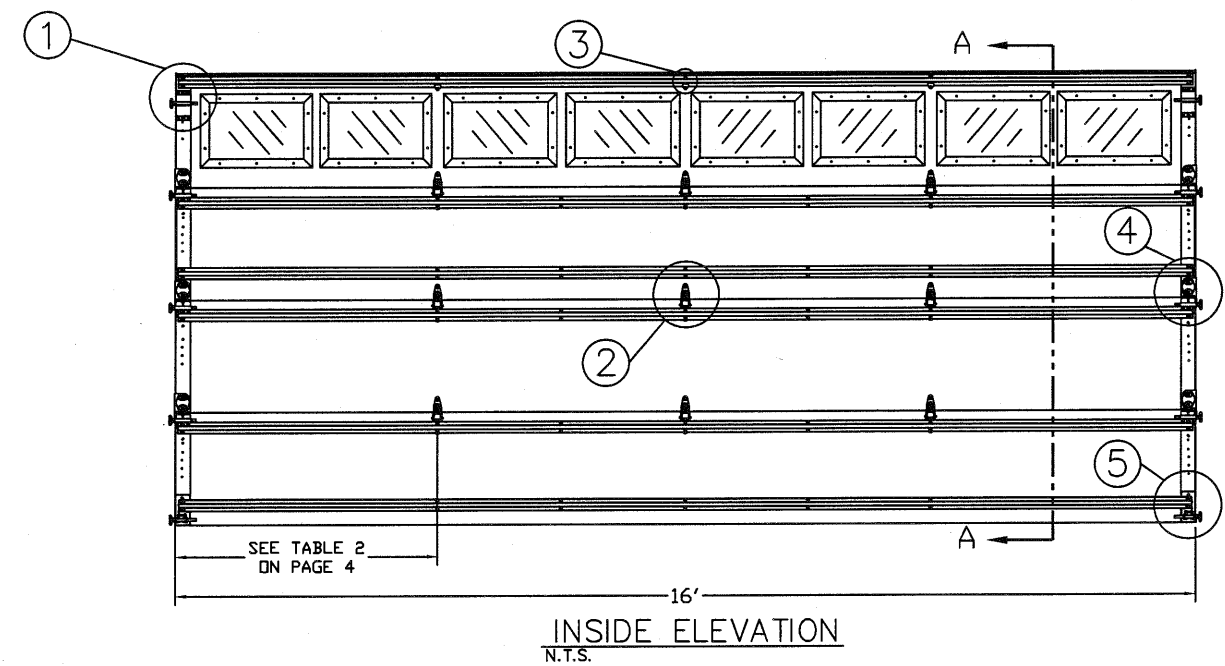
TYPICAL DURASAFE END HINGE
N.T.S.



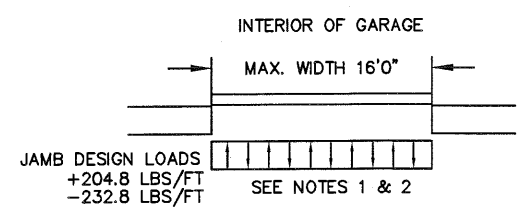
TYPICAL TOP STRUT ATTACHMENT
N.T.S.

SPECIFICATIONS AND NOTES

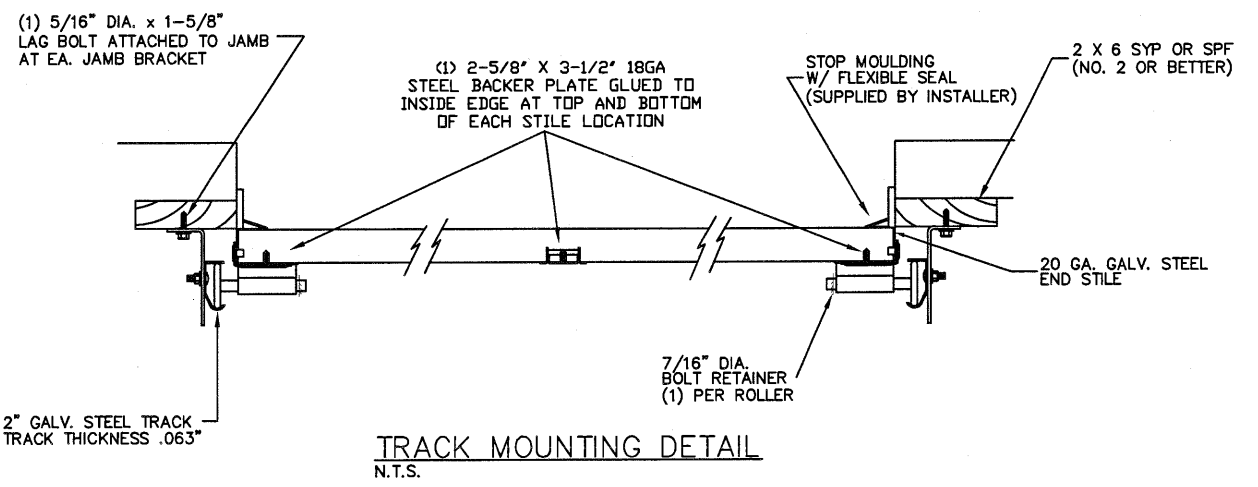
1. ALL THE LOAD FROM THE DOOR IS TRANSFERRED TO THE VERTICAL TRACK, FROM THE TRACK THE LOAD IS TRANSFERRED TO THE VERTICAL JAMBS. THE HORIZONTAL JAMB OR HEADER RECEIVES NO PORTION OF THE LOAD TRANSFERRED FROM THE DOOR.
2. EACH VERTICAL JAMBS RECEIVES MAXIMUM DESIGN LOADS OF: +204.8 LBS/FT & -232.8 LBS/FT
3. DOOR AND HARDWARE WILL BE DESIGNED, MANUFACTURED AND INSTALLED WITH STANDARDS AS SET FORTH BY DASMA.
4. DOOR SECTIONS SHALL BE 24 GA. (.0216) MIN. EXTERIOR SKIN ROLLED FORMED, W/ BAKED ON POLYESTER FINISH
5. SUPPORTING STRUCTURAL ELEMENTS SHALL BE DESIGNED BY A REGISTERED PROFESSIONAL ENGINEER FOR WIND LOADS INDICATED ON THIS DRAWING IN ADDITION TO OTHER LOADINGS.



INSIDE ELEVATION
N.T.S.



JAMB DESIGN LOADS
+204.8 LBS/FT
-232.8 LBS/FT
SEE NOTES 1 & 2



TRACK MOUNTING DETAIL
N.T.S.

THE METHOD OF TESTING WAS IN SUBSTANTIAL CONFORMANCE WITH THE PROCEDURE DESCRIBED IN DASMA 108. THE PRESSURES SHOWN ON THE DRAWINGS WERE CALCULATED USING ASCE 7-98/02/05 WITH THE FOLLOWING PARAMETERS (5 FEET OF DOOR WIDTH IN THE END ZONE, ROOF AT ANY SLOPE, AND I=1.0):

WIND SPEED (MPH)	130	118	112	107	103
EXPOSURE LEVEL	B	C	C	D	D
MEAN ROOF HEIGHT	30'	15'	25'	15'	25'

REV	DESCRIPTION OF REVISIONS	DATE	BY

MAX SIZE
16' WIDTH
14' HEIGHT
(DOOR HEIGHT SUBJECT TO WEIGHT LIMITATIONS)

DESIGN LOADS
+25.6 PSF
-29.1 PSF

TEST LOADS
(1.5 x DESIGN LOADS)
+38.4 PSF
-43.6 PSF

Thomas L. Shelmerdine, PE (TX PE #85829)
Structural Solutions, PA (TX Firm #F-004063)

STATE OF TEXAS
THOMAS L. SHELMERDINE
85829
LICENSED PROFESSIONAL ENGINEER
TX

5921-G W. Friendly Ave., Greensboro, NC 27410

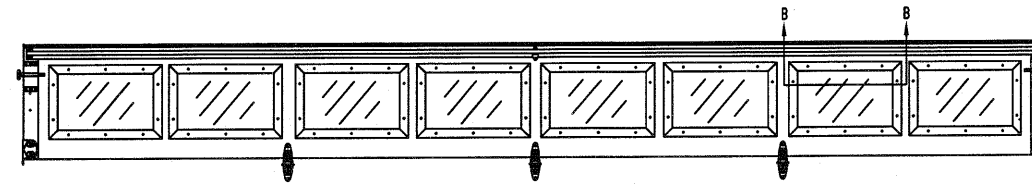
ENTRE//MATIC

165 CARRIAGE COURT WINSTON-SALEM, N.C. 27105

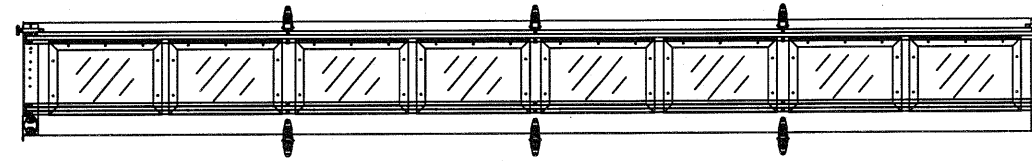
MODEL #1200 AMARR HERITAGE 3000
MODEL #1200 AMARR OAK SUMMIT 3000
SHORT, LONG, FLUSH & OAK SUMMIT PANELS

SIZE	DRAWN BY	RLR	DATE	07/22/14	DRAWING NUMBER
B	CHECKED BY	RLR	DATE	07/22/14	IRC-1216-130-15

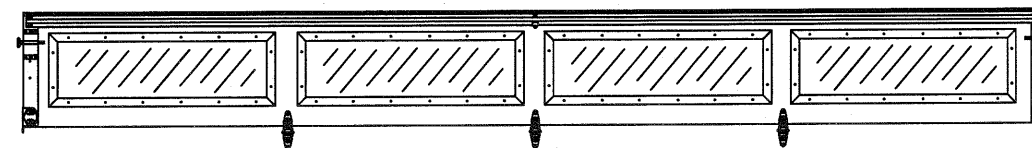
OPTIONAL SHORT AND LONG PANEL GLAZING LAYOUTS
GLAZING MEETS ASTM E1300-04



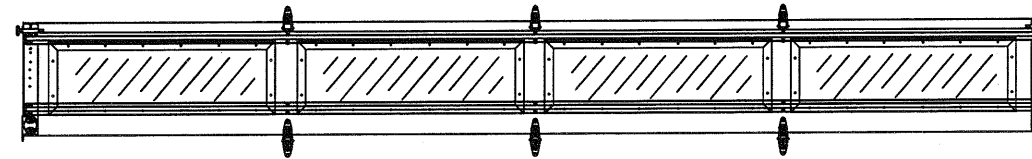
TOP SECTION



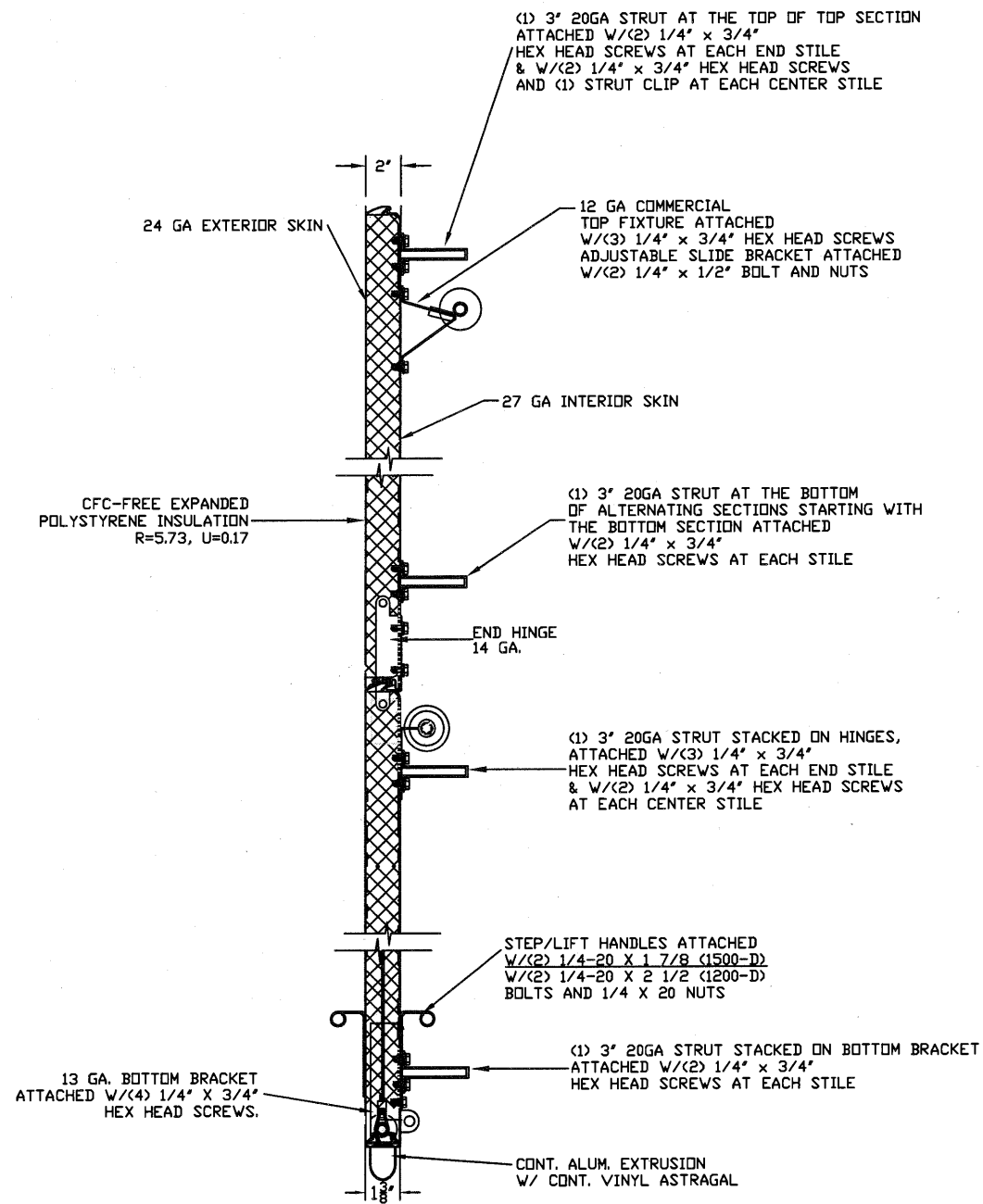
INTERMEDIATE SECTION



TOP SECTION



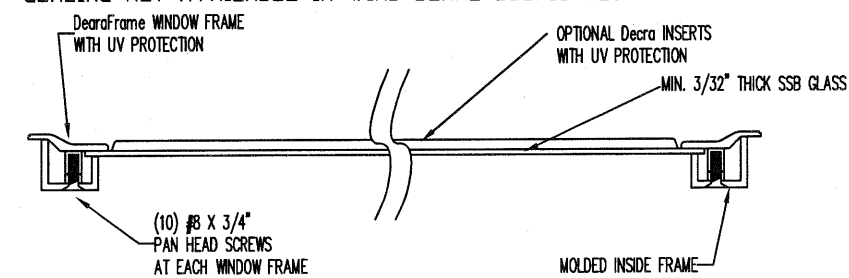
INTERMEDIATE SECTION



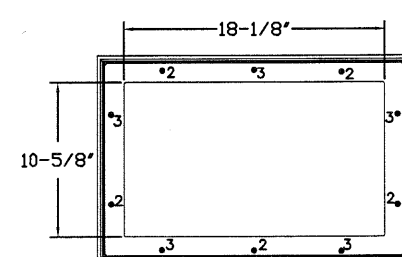
SECTION A-A (SIDE VIEW)
N.T.S.

GLAZING OPTION CROSS SECTION

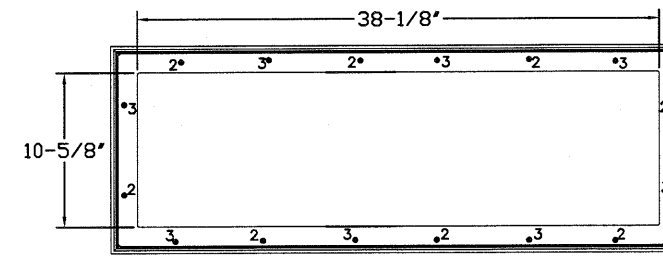
GLAZING NOT AVAILABLE IN WIND-BORNE DEBRIS REGION



SECTION B-B



SHORT PANEL GLAZING FASTENER DETAIL
N.T.S.



LONG PANEL GLAZING FASTENER DETAIL
N.T.S.

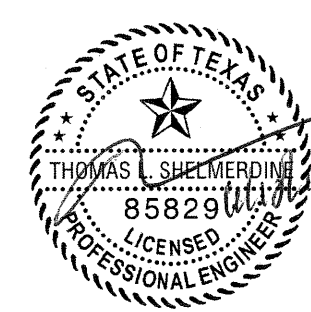
REV	DESCRIPTION OF REVISIONS	DATE	BY

MAX SIZE
16' WIDTH
14' HEIGHT
(DOOR HEIGHT SUBJECT
TO WEIGHT LIMITATIONS)

DESIGN LOADS
+25.6 PSF
-29.1 PSF

TEST LOADS
(1.5 x DESIGN LOADS)
+38.4 PSF
-43.6 PSF

Thomas L. Shelmerdine, PE (TX PE #85829)
Structural Solutions, PA (TX Firm #F-004063)



TX

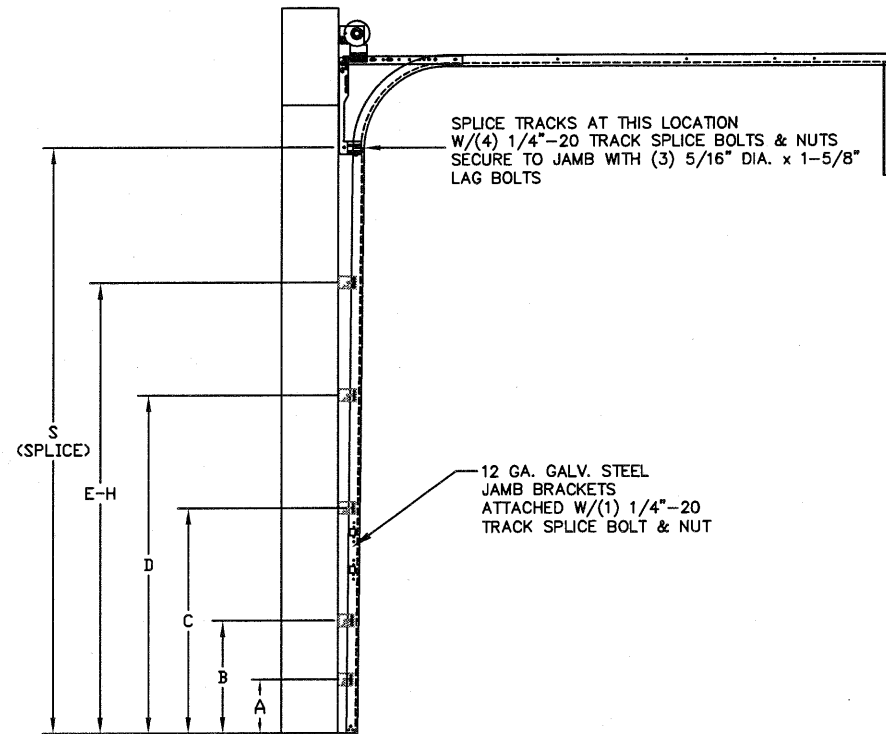
5921-G W. Friendly Ave., Greensboro, NC 27410

ENTRE/MATIC

165 CARRIAGE COURT WINSTON-SALEM, N.C. 27105

MODEL #1200 AMARR HERITAGE 3000
MODEL #1200 AMARR OAK SUMMIT 3000
SHORT, LONG, FLUSH & OAK SUMMIT PANELS

SIZE	DRAWN BY	RLR	DATE	07/22/14	DRAWING NUMBER
B	CHECKED BY	RLR	DATE	07/22/14	IRC-1216-130-15



TRACK CONFIGURATION FOR 6'6" UP TO 14' TALL DOORS (SEE TABLE 1)
N.T.S.

TABLE 1

DOOR HEIGHT	TRACK ATTACHMENT								SPLICE
	A	B	C	D	E	F	G	H	
6' 6"	3.5"	21"	42"	63"					70"
7'	3.5"	21"	42"	63"					76"
7' 6"	3.5"	21"	42"	63"					82"
8'	3.5"	21"	42"	63"					88"
8' 6"	3.5"	21"	42"	63"	84"				94"
9'	3.5"	21"	42"	63"	84"				100"
9' 6"	3.5"	21"	42"	63"	84"				106"
10'	3.5"	21"	42"	63"	84"	105"			112"
10' 6"	3.5"	21"	42"	63"	84"	105"			118"
11'	3.5"	21"	42"	63"	84"	105"			124"
11' 6"	3.5"	21"	42"	63"	84"	105"			130"
12'	3.5"	21"	42"	63"	84"	105"	126"		136"
12' 6"	3.5"	21"	42"	63"	84"	105"	126"		142"
13'	3.5"	21"	42"	63"	84"	105"	126"		148"
13' 6"	3.5"	21"	42"	63"	84"	105"	126"	147"	154"
14'	3.5"	21"	42"	63"	84"	105"	126"	147"	160"

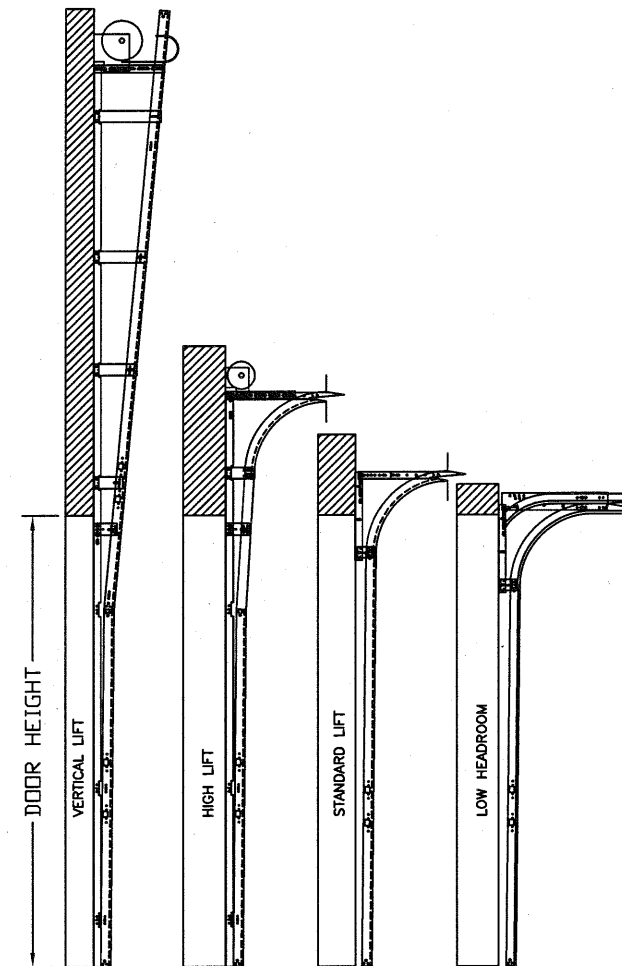
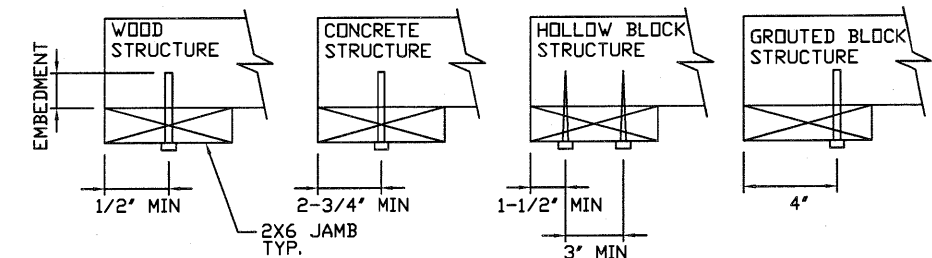
ALL TRACK ATTACHMENT SPACING +/- 1.5" ALLOWED
WITH SYP OR SPF NO. 2 OR BETTER ONLY

WOOD JAMB ATTACHMENT TO STRUCTURE

2 X 6 VERTICAL JAMB ATTACHMENT TO WOOD FRAME STRUCTURE
5/16" X 3" LAG SCREWS STARTING 6" FROM ENDS THEN 24" O.C. (1 1/2" EMBEDMENT)
2 X 6 VERTICAL JAMB ATTACHMENT TO 2,000 PSI CONCRETE
HILTI KWIK BOLT 3/8" X 4" STARTING 6" FROM ENDS THEN 24" O.C. (2 1/2" EMBEDMENT)
HILTI SLEEVE ANCHOR 3/8" X 2-3/4" STARTING 6" FROM ENDS THEN 20" O.C. (1 1/4" EMBEDMENT)
ITW/RAMSET REDHEAD (TRU-BOLT) 3/8" X 4" STARTING 6" FROM ENDS THEN 24" O.C. (2 1/2" EMBEDMENT)
2 X 6 VERTICAL JAMB ATTACHMENT TO HOLLOW C-90 BLOCK
SIMPSON 1/4" X 3" TITEN SCREWS STARTING 6" FROM ENDS, USE PAIRS OF FASTENERS
(3" APART) AT 16" O.C. (1 1/2" EMBEDMENT)
HILTI 1/4" X 2-3/4" KWIK-CON II+ SCREWS STARTING 6" FROM ENDS, USE PAIRS OF
FASTENERS (3" APART) AT 16" O.C. (1 1/4" EMBEDMENT)

2 X 6 VERTICAL JAMB ATTACHMENT TO GROUTED C-90 BLOCK (2000 PSI GROUT)
HILTI SLEEVE ANCHOR 3/8" X 2-3/4" STARTING 6" FROM ENDS THEN 24" O.C. (1 1/4"
EMBEDMENT) (OR, USE FASTENERS FOR HOLLOW C-90 BLOCK)

*LAGS AND BOLTS CAN BE COUNTERSUNK TO PROVIDE A FLUSH MOUNTING SURFACE.
*PREPARATION OF WOOD JAMBS BY OTHERS



AVAILABLE TRACK CONFIGURATIONS
N.T.S.

REV	DESCRIPTION OF REVISIONS	DATE	BY

MAX SIZE
16' WIDTH
14' HEIGHT
(DOOR HEIGHT SUBJECT TO WEIGHT LIMITATIONS)

DESIGN LOADS
+25.6 PSF
-29.1 PSF

TEST LOADS
(1.5 x DESIGN LOADS)
+38.4 PSF
-43.6 PSF

Thomas L. Shelmerdine, PE (TX PE #85829)
Structural Solutions, PA (TX Firm #004063)

STATE OF TEXAS
THOMAS L. SHELMERDINE
85829
LICENSED PROFESSIONAL ENGINEER
TX

5921-G W. Friendly Ave., Greensboro, NC 27410

ENTRE/MATIC

165 CARRIAGE COURT WINSTON-SALEM, N.C. 27105

MODEL #1200 AMARR HERITAGE 3000
MODEL #1200 AMARR OAK SUMMIT 3000
SHORT, LONG, FLUSH & OAK SUMMIT PANELS

SIZE	DRAWN BY	RLR	DATE	07/22/14	DRAWING NUMBER
B	CHECKED BY	RLR	DATE	07/22/14	IRC-1216-130-15

SHEET 3 OF 4

TABLE 2

Section	Panel Type	Center Stile Locations (Measured from Left Edge)				Max Design Loads Allowed	
		1st (in)	2st (in)	3rd (in)	4th (in)	Positive (PSF)	Negative (PSF)
10' 0	Short	48.41	71.59			34.2	38.8
12' 0	Short	48.81	95.19			25.7	29.2
12' 0	Long	49.63	94.38			25.9	29.5
12' 0	Oak Summit	48.31	95.69			25.6	29.0
13' 10	Short	57.16	83.00	108.71		29.5	33.5
14' 0	Short	57.76	84.00	110.11		29.1	33.1
14' 0	Long	58.63	84.00	109.38		29.1	33.1
14' 2	Short	58.85	85.00	111.41		28.8	32.7
14' 2	Long	59.17	85.00	110.83		28.8	32.7
14' 4	Short	59.16	86.00	112.71		28.4	32.3
14' 4	Long	60.17	86.00	111.83		28.4	32.3
14' 6	Short	59.86	87.00	114.01		28.1	31.9
14' 6	Long	61.17	87.00	112.83		28.1	31.9
14' 8	Short	60.56	88.00	115.31		27.8	31.6
14' 8	Long	44.81	88.00	131.19		27.8	31.6
14' 10	Short	61.26	89.00	116.61		27.5	31.2
14' 10	Long	45.60	89.00	132.40		27.5	31.2
15' 0	Short	61.94	90.00	117.94		27.2	30.9
15' 0	Long	46.60	90.00	133.40		27.2	30.9
15' 2	Short	62.66	91.00	119.21		26.9	30.5
15' 2	Long	47.60	91.00	134.40		26.9	30.5
15' 4	Short	53.60	79.20	104.80	130.40	26.6	30.2
15' 4	Long	47.25	92.00	136.75		26.6	30.2
15' 6	Short	46.62	93.00	139.38		26.3	29.9
15' 6	Long	47.60	93.00	138.40		26.3	29.9
15' 6	Oak Summit	47.42	93.00	138.58		26.3	29.9
15' 8	Short	47.62	94.00	140.38		26.0	29.6
15' 8	Long	48.60	94.00	139.40		26.0	29.6
15' 8	Oak Summit	48.02	94.00	139.98		26.0	29.6
15' 10	Short	48.62	95.00	141.38		25.7	29.3
15' 10	Long	49.17	95.00	140.83		25.7	29.3
15' 10	Oak Summit	48.62	95.00	141.38		25.7	29.3
16' 0	Short	49.62	96.00	142.38		25.6	29.1
16' 0	Long	50.60	96.00	141.40		25.6	29.1
16' 0	Oak Summit	48.42	96.00	143.58		25.6	29.1

CONTACT ENGINEERING REGARDING SIZES NOT LISTED

TABLE 3

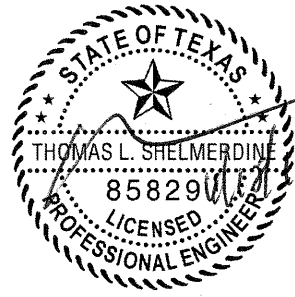
DOOR HEIGHT	SECTION HEIGHTS							
	Btm	#2	#3	#4	#5	#6	#7	#8
14' 0"	21"	21"	21"	21"	21"	21"	21"	21"
13' 6"	21"	21"	21"	21"	21"	18"	18"	21"
13' 0"	21"	21"	21"	18"	18"	18"	18"	21"
12' 6"	21"	18"	18"	18"	18"	18"	18"	21"
12' 0"	21"	21"	21"	21"	21"	18"	21"	
11' 6"	21"	21"	21"	18"	18"	18"	21"	
11' 0"	21"	18"	18"	18"	18"	18"	21"	
10' 6"	21"	21"	21"	21"	21"	21"		
10' 0"	21"	21"	21"	18"	18"	21"		
9' 6"	21"	18"	18"	18"	18"	21"		
9' 0"	18"	18"	18"	18"	18"	18"		
8' 6"	21"	21"	21"	18"	21"			
8' 0"	21"	18"	18"	18"	21"			
7' 6"	18"	18"	18"	18"	18"			
7' 0"	21"	21"	21"	21"				
6' 6"	21"	18"	18"	21"				

REV	DESCRIPTION OF REVISIONS	DATE	BY

MAX SIZE
16' WIDTH
14' HEIGHT
(DOOR HEIGHT SUBJECT TO WEIGHT LIMITATIONS)

DESIGN LOADS
+25.6 PSF
-29.1 PSF

TEST LOADS
(1.5 x DESIGN LOADS)
+38.4 PSF
-43.6 PSF



TX

Thomas L. Shelmerdine, PE (TX PE #85829)
Structural Solutions, PA (TX Firm #004063)

5921-G W. Friendly Ave., Greensboro, NC 27410

ENTRE//MATIC

165 CARRIAGE COURT WINSTON-SALEM, N.C. 27105

MODEL #1200 AMARR HERITAGE 3000
MODEL #1200 AMARR OAK SUMMIT 3000
SHORT, LONG, FLUSH & OAK SUMMIT PANELS

SIZE	DRAWN BY	RLR	DATE	07/22/14	DRAWING NUMBER
B	CHECKED BY	RLR	DATE	07/22/14	IRC-1216-130-15

SHEET 4 OF 4