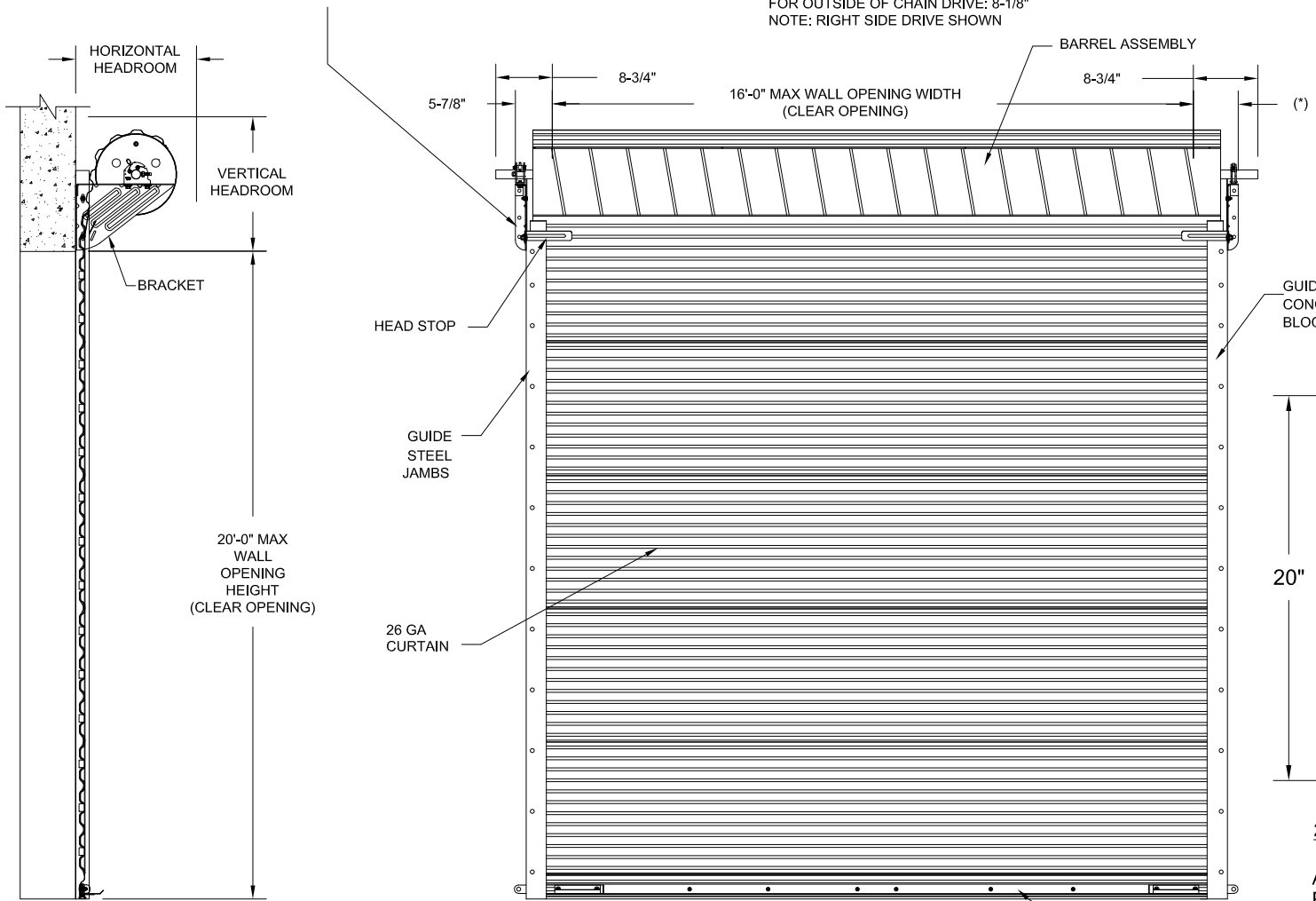


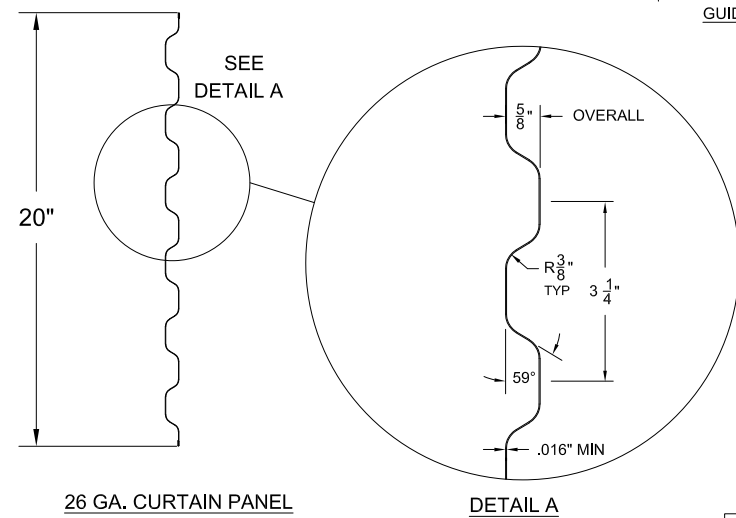
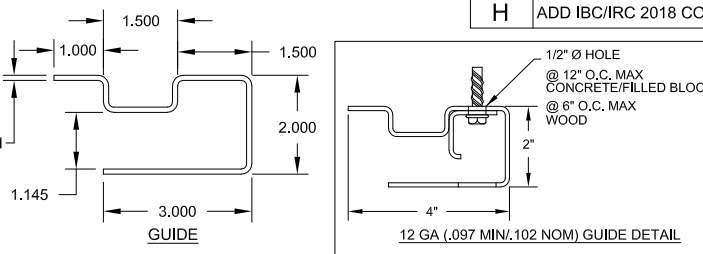
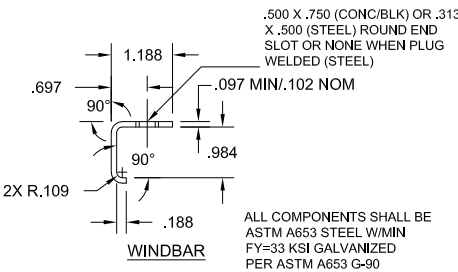
**BRACKET ATTACHMENT**  
 CONCRETE/FILLED BLOCK: DEWALT SCREW-BOLT+, 3/8 X 1-3/4" LONG  
 WOOD: LAG BOLT, 3/8 X 3" LONG  
 STEEL: HEX BOLT, GR.5, 3/8-16 X 1-1/4" LONG



(\*) FOR PUSH-UP OPERATION: 5-7/8"  
 FOR HAND CHAIN OPERATION: 6-5/8"  
 FOR ELECTRIC OPERATION: 7-3/8"  
 FOR OUTSIDE OF CHAIN DRIVE: 8-1/8"  
 NOTE: RIGHT SIDE DRIVE SHOWN

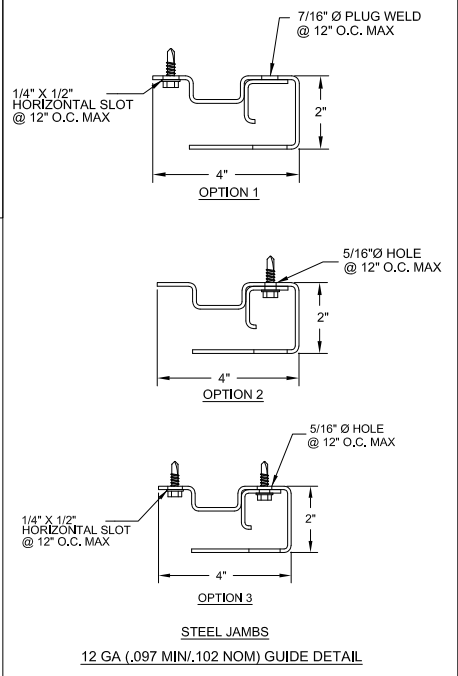
**HEADROOM REQUIRED**

OPENING HEIGHT	VERTICAL HEADROOM	HORIZONTAL HEADROOM
THRU 8'-0"	20"	20"
OVER 8'-0" THRU 10'-0"	21"	21"
OVER 10'-0" THRU 14'-0"	21-1/2"	21"
OVER 14'-0" THRU 16'-0"	22"	22"
OVER 16'-0" THRU 18'-0"	22"	22"
OVER 18'-0" THRU 20'-0"	22"	22"

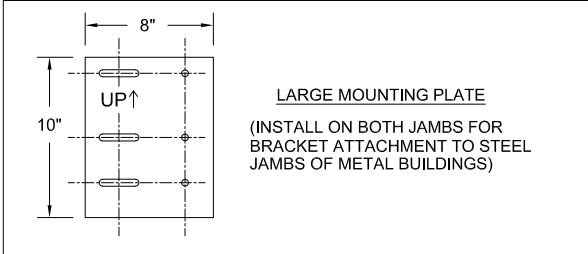
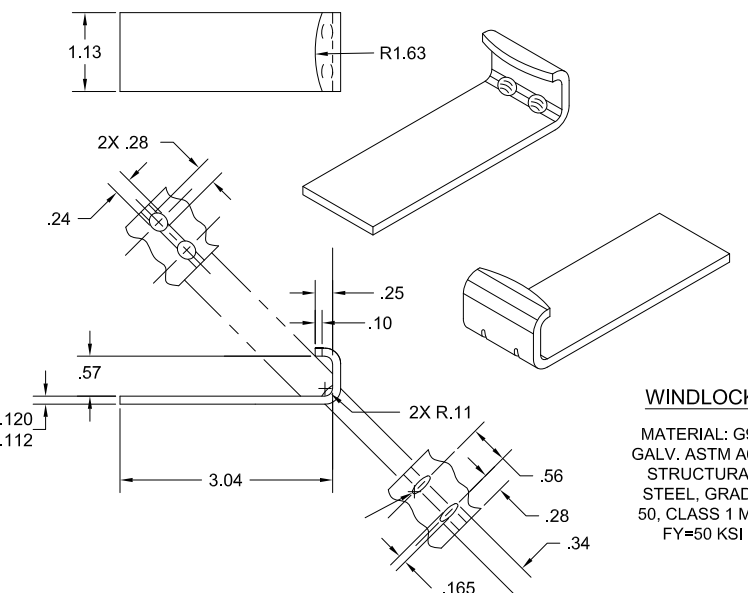


26 GA. CURTAIN PANEL  
 ASTM A653 GR 80 ZINC COATED STEEL  
 PRE-PAINTED WITH FULL COAT OF PRIMER AND  
 BAKED SILICONIZED POLYESTER FINISH COAT

REVISIONS			
REV	DESCRIPTION	DATE	APPROVAL
	DRAWING RELEASE	1-31-03	DM
A	GUIDE ATTACH AT TOE	11-13-03	DM
B	ADD GUIDE OPTION 3	4-13-04	DM
C	NOTE REVISION	6-17-09	CS
D	ADDED "T" BRACKET OPTION	1-20-12	CS
E	ADDED CHARTED PSF VALUES	2-28-14	CS
F	JS CHARTED VALUE REVISION	10-12-20	CS
G	WOOD JAMBS ADDED	10-15-21	CS
H	ADD IBC/IRC 2018 COMPLIANCE TO NOTES	11-11-21	BA



John E. Scates, P.E.  
 2560 King Arthur Blvd, Ste 124-54  
 Lewisville, TX 75056  
 FL PE 51737\_TX PE 56308/F2203



THESE CONFIDENTIAL DOCUMENTS SUBMITTED BY JANUS CONTAIN INFORMATION OF A PROPRIETARY NATURE AND MAY NOT BE REPRODUCED OR USED TO MANUFACTURE ANYTHING IN PART OR IN WHOLE FOR ANY PURPOSE OTHER THAN THAT WHICH IS NECESSARY FOR PREPARATION OF BIDS OF ENGINEERING WITHOUT THE EXPRESS PERMISSION OF JANUS WHICH MAY RECALL DOCUMENTS AT ANY TIME.

UNLESS OTHERWISE SPECIFIED DIMENSIONS ARE IN INCHES. TOLERANCES LISTED BELOW.

DECIMAL	FRACTIONS	ANGLES	HOLE DIAMETERS
X.XX	+/-0.030"	+/-1/16"	+/- 0° 30'
X.XXX	+/-0.005"		
			UNDER 0.251 + 0.004 - 0.003
			0.251 - 0.500 + 0.006 - 0.003
			OVER 0.500 + 0.008 - 0.003

PART NUMBER:	
MATERIAL:	
APPLIED FINISH:	
UNIT OF MEASURE:	
APPROVALS	DATE
DRAWN: BECKY NELSON	1-31-03
CHECKED: DON MILLS	1-31-03
APPROVED: DON MILLS	1-31-03

**JANUS INTERNATIONAL CORPORATION**  
 135 JANUS INTERNATIONAL BLVD TEMPLE, GA 30179  
 770-562-2850/Fax 770-562-2264  
 © 2014 Janus International Corporation All Rights Reserved

CERTIFIED WIND LOAD RATED  
 26 GA SERIES 3100 DOOR ASSEMBLY  
 MAX. SIZE 16'-0" X 20'-0"

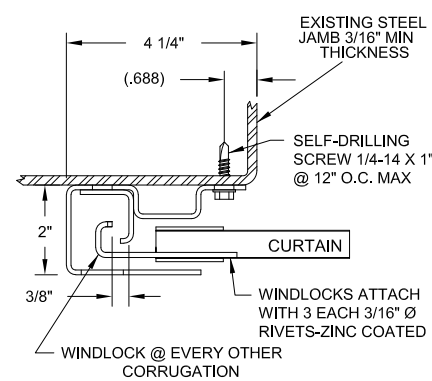
SIZE **B** DRAWING NUMBER: **T1004** REV: **H**

SCALE: NONE SHEET: 1 OF: 2

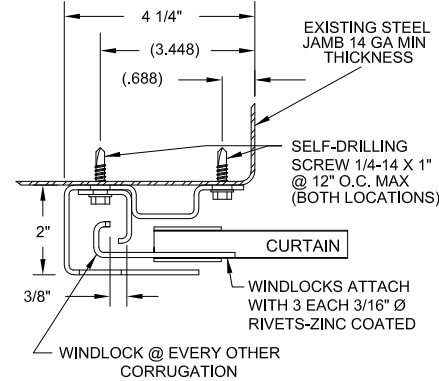
Professional Engineer's seal provided only for verification of windload construction details.  
 Printed copies of this document are not considered signed and sealed and the signature must be verified on any electronic copies.

SEE SHEET 2 FOR NOTES

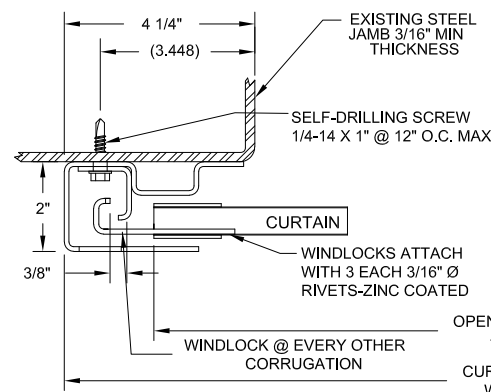
STEEL JAMBS - LH GUIDE MOUNT SHOWN



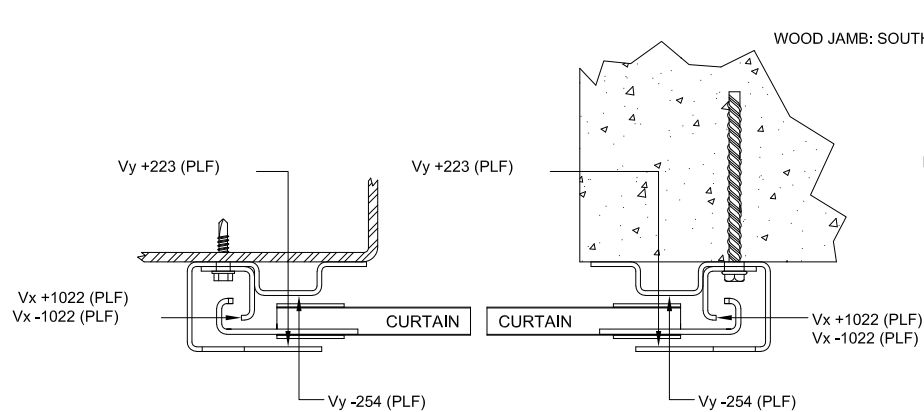
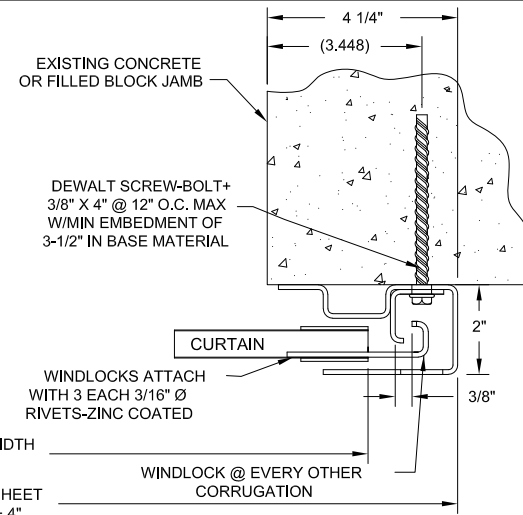
OPTION 1



OPTION 3

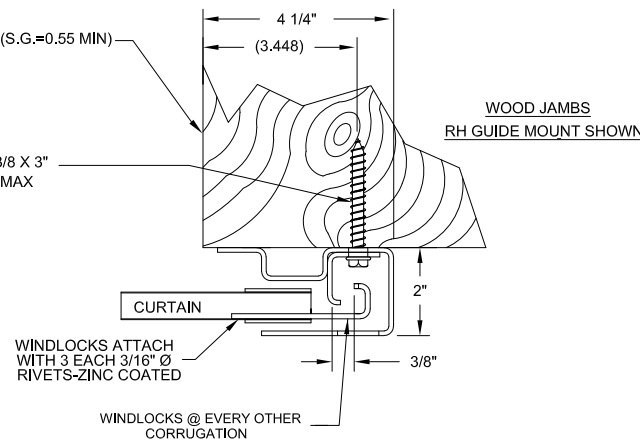


OPTION 2



SUPERIMPOSED LOAD DIAGRAM-OPTIONS 1-3

CONCRETE/FILLED BLOCK JAMBS  
RH GUIDE MOUNT SHOWN



WOOD JAMBS  
RH GUIDE MOUNT SHOWN

ALLOWABLE TRANSVERSE DESIGN WIND LOADS (PSF)

MAX DOOR WIDTH	MAX DOOR HEIGHT	DESIGN LOAD POSITIVE (PSF)	DESIGN LOAD NEGATIVE (PSF)
8'-0"	20'-0"	53.1	60.5
9'-0"	20'-0"	47.4	54.0
10'-0"	20'-0"	42.8	48.8
11'-0"	20'-0"	39.0	44.5
12'-0"	20'-0"	36.0	41.0
13'-0"	20'-0"	31.0	35.4
14'-0"	20'-0"	27.3	31.1
15'-0"	20'-0"	24.2	27.6
16'-0"	20'-0"	21.6	24.7

GENERAL NOTES:

- TESTING:
  - TESTED PER DASMA 108 (STATIC) AND DASMA 115 (IMPACT AND CYCLIC).
  - TESTING PERFORMED IN AN INDEPENDENT LAB.
  - DESIGN PRESSURE: +36.0/-41.0 PSF AT 12'-0" OPENING WIDTH.
- DESIGN WINDLOAD REQUIREMENTS FOR BUILDING OPENINGS SHALL BE DETERMINED BY OTHERS.
- SUPERIMPOSED LOADS ON THE JAMBS FROM THIS DOOR ARE DESIGNATED AS Vx and Vy HEREIN. OTHERS SHALL VERIFY ADEQUACY OF BUILDING STRUCTURE TO RESIST SUPERIMPOSED LOADS Vx, Vy.
- ALL WELDING SHALL BE PERFORMED BY QUALIFIED WELDERS IN ACCORDANCE WITH A.W.S. SPECIFICATIONS. WELDING ELECTRODES SHALL CONFORM TO A.W.S. A5.1 GRADE E-70
- DOORS SHALL BE PROVIDED WITH LOCK MECHANISMS AT THE OPTION OF THE OWNER
- ALL BOLTS AND WASHERS SHALL BE GALVANIZED OR STAINLESS STEEL WITH A MINIMUM TENSILE STRENGTH OF 60 KSI.
- ANCHOR NOTES:
  - EMBEDMENT LENGTH DOES NOT INCLUDE STUCCO FINISH.
  - FOR HOLLOW BLOCK, FILL ALL CELLS @ANCHOR WITH 2000 PSI GROUT.
  - CONCRETE TO BE 2500 PSI MIN.
  - ANCHORS SHALL BE INSTALLED IN ACCORDANCE WITH MANUFACTURER'S SPECIFICATIONS
  - APPROVED CONCRETE AND FILLED-CMU ANCHORS:
    - 3/8" DEWALT SCREW-BOLT+
    - 3/8" SIMPSON TITEN HD.
- DOOR OPERATION TYPE MAY BE PUSH-UP, HAND CHAIN, OR ELECTRIC.
- GUIDE-TO-JAMB ATTACHMENT FASTENERS BEGIN 4" FROM FLOOR AND END 4" BELOW THE TOP OF WALL OPENING.
- COMPLIES WITH THE WINDLOAD REQUIREMENTS OF IBC/IRC 2018

THESE CONFIDENTIAL DOCUMENTS SUBMITTED BY JANUS CONTAIN INFORMATION OF A PROPRIETARY NATURE AND MAY NOT BE REPRODUCED OR USED TO MANUFACTURE ANYTHING IN PART OR IN WHOLE FOR ANY PURPOSE OTHER THAN THAT WHICH IS NECESSARY FOR PREPARATION OF BIDS OF ENGINEERING WITHOUT THE EXPRESS PERMISSION OF JANUS WHICH MAY RECALL DOCUMENTS AT ANY TIME.

UNLESS OTHERWISE SPECIFIED DIMENSIONS ARE IN INCHES. TOLERANCES LISTED BELOW.

DECIMAL	FRACTIONS	ANGLES	HOLE DIAMETERS
X.XX	+/-0.030"	+/-1/16"	+/- 0° 30'
X.XXX	+/-0.005"		
			UNDER 0.251
			0.251 - 0.500
			OVER 0.500

PART NUMBER:	
MATERIAL:	
APPLIED FINISH:	
UNIT OF MEASURE:	
APPROVALS	DATE
DRAWN: BECKY NELSON	1-31-03
CHECKED: DON MILLS	1-31-03
APPROVED: DON MILLS	1-31-03

**JANUS INTERNATIONAL CORPORATION**  
135 JANUS INTERNATIONAL BLVD TEMPLE, GA 30179  
770-562-2850/Fax 770-562-2264  
© 2014 Janus International Corporation All Rights Reserved

CERTIFIED WIND LOAD RATED  
26 GA SERIES 3100 DOOR ASSEMBLY  
MAX. SIZE 16'-0" X 20'-0"

SIZE <b>B</b>	DRAWING NUMBER: <b>T1004</b>	REV: <b>H</b>
SCALE: NONE	SHEET: 2	OF: 2