

CLOPAY MODEL 3200: 24 GA. EXTERIOR STEEL SKIN
 CLOPAY MODEL 3220: 20 GA. EXTERIOR STEEL SKIN
 HOLMES MODEL 240/240G: 24 GA. EXTERIOR STEEL SKIN

UP TO 24'2"W x 18'0"H MAXIMUM

OPTIONAL SINGLE PANE OR INSULATED WINDOW LITES. ALL PANES ANNEALED GLASS OR STRONGER. SINGLE PANES 1/2" OR THICKER. INSULATED WINDOWS 1/2" THICK, CONSISTING OF (2) PANES 1/2" THICK. FRAMES SECURED WITH (10) PUSHITTE PAN #8 x 2" PHILLIPS HEAD SCREWS, (3) ON EACH HORIZONTAL EDGE, (2) ON EACH VERTICAL EDGE. MAXIMUM DLO 21-3/8" x 5-1/2".

ADJUSTABLE TOP ROLLER BRACKETS
 C-CHANNEL - SEE SECTION A-A FOR DETAILS

OPTIONAL ALUMINUM FULL VISION WINDOW LITE SECTIONS AVAILABLE, SINGLE PANE OR INSULATED. ALL PANES ANNEALED GLASS OR STRONGER. SINGLE PANES 1/2" OR THICKER. INSULATED WINDOWS 1/2" THICK, CONSISTING OF (2) PANES 1/2" THICK. MAXIMUM DLO: 33" x 21-3/4". FULL VISION SECTIONS TO HAVE SAME REINFORCEMENT AS OTHER SECTIONS EXCEPT AS NOTED.

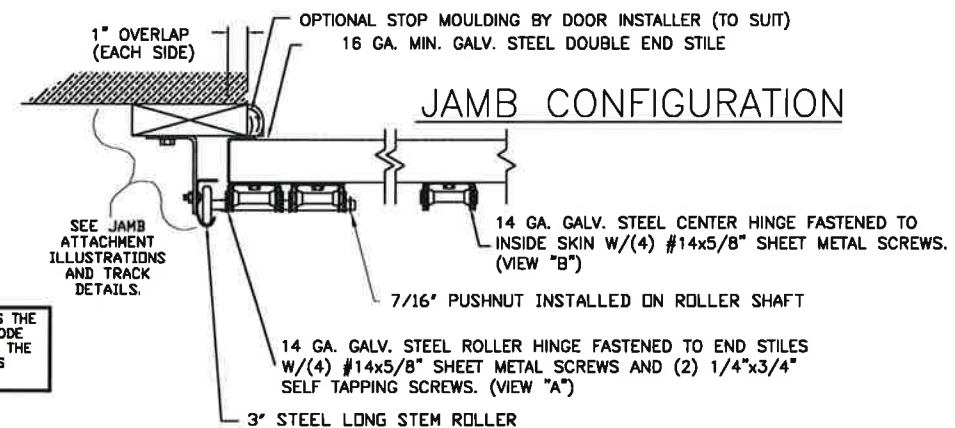
INSIDE SLIDE BOLT

TWO POINT (MIN) LOCKING REQUIRED
 SLIDE BOLT LOCK ENGAGES INTO VERTICAL TRACK. ONE LOCK ON EACH SIDE OF DOOR.

6" C-CHANNEL STRAP; (7) STRAPS PER SECTION. OPTIONAL FULL VISION SECTIONS HAVE (9) STRAPS PER SECTION.

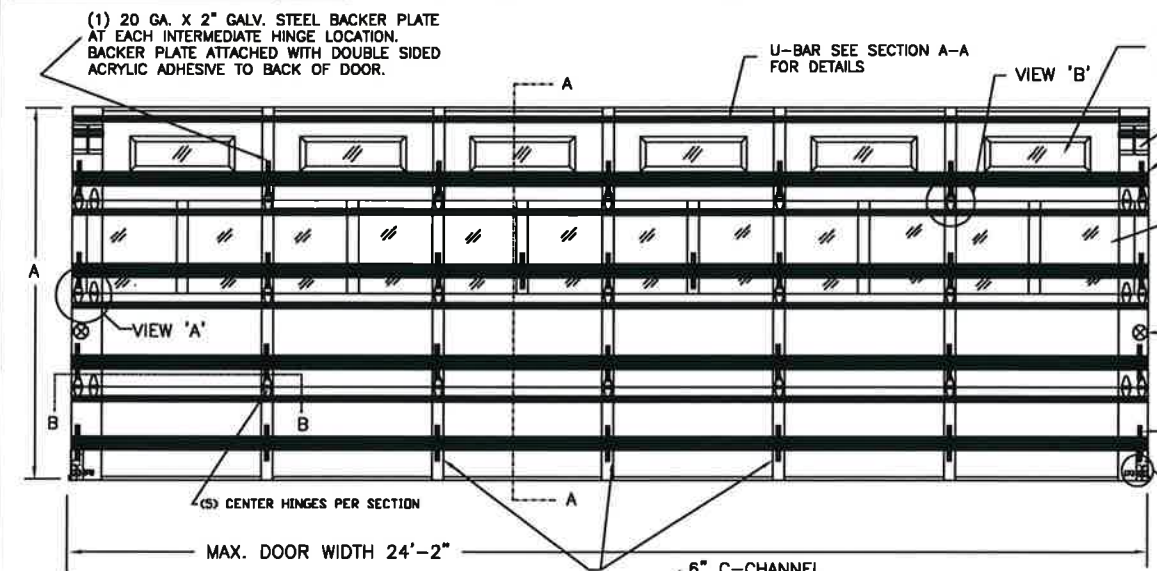
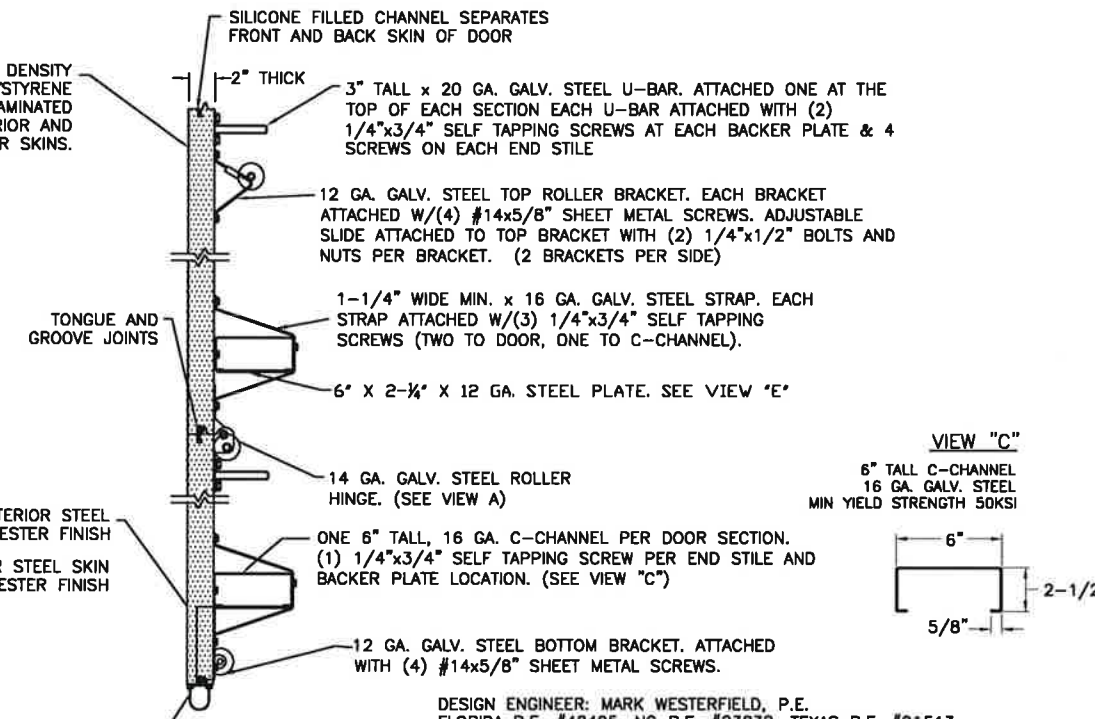
3" ROLLER CARRIER PART # 0120394. MOUNT WITH QTY 3 SELF DRILLING SCREWS AS SHOWN

REVISIONS					
REV. NO.	ZONE	DATE	ECN NO.	APPVD:	DESCRIPTION
04	-	08/2012	-	-	REVISED FOR TDI.
05	-	06/2013	-	-	REMOVED ACRYLIC/WIRE GLASS. ADDED GLAZING SIZE FOR FV.
06	-	08/2016	-	-	REMOVED WIND SPEED TABLE.
04	-	02/2022	-	-	REVISED FOR TDI.



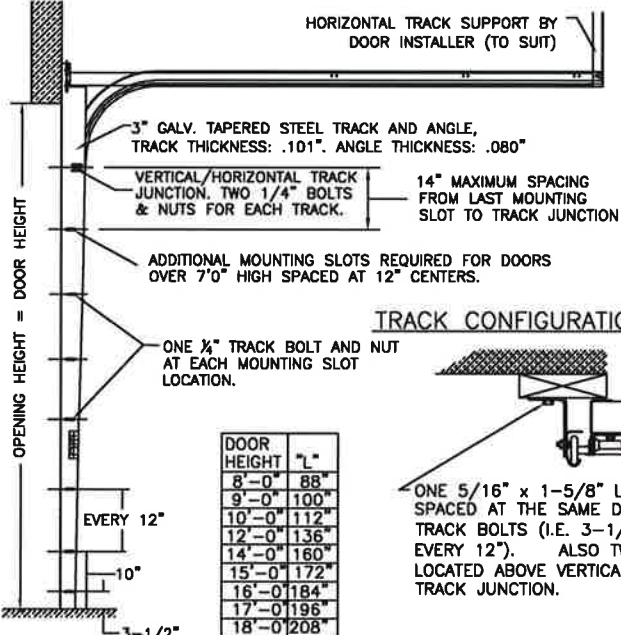
THIS PRODUCT COMPLIES WITH THE 2018 IBC/IRC.
 THE OPTIONAL GLAZING SHOWN ON THIS DRAWING MEETS THE WIND LOAD REQUIREMENTS OF THE FLORIDA BUILDING CODE OR INTERNATIONAL BUILDING CODE BUT DOES NOT MEET THE IMPACT RESISTANT REQUIREMENT FOR WINDBORNE DEBRIS REGIONS (FBC / IBC CHAPTER 15).

SECTION B-B



DOOR HEIGHT 'A'	NUMBER OF SECTIONS
UP TO 8'-0"	4
8'-3" THRU 10'-0"	5
10'-3" THRU 12'-0"	6
12'-3" THRU 14'-0"	7
14'-3" THRU 16'-0"	8
16'-3" THRU 18'-0"	9

VIEW "E"
 ATTACH THE 6" x 2-1/4" x 12 GA. STEEL REINFORCING PLATE TO THE UNDERSIDE OF THE C-CHANNEL WITH (4) 1/4"x3/4" SELF TAPPING SCREWS AT THESE LOCATIONS.

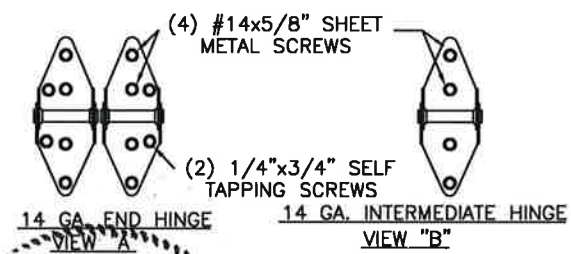


DOOR HEIGHT	"L"
8'-0"	88"
9'-0"	100"
10'-0"	112"
12'-0"	136"
14'-0"	160"
15'-0"	172"
16'-0"	184"
17'-0"	196"
18'-0"	208"

TRACK CONFIGURATION

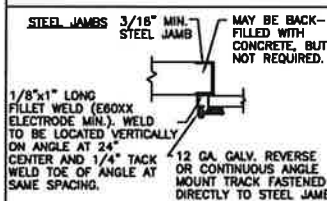
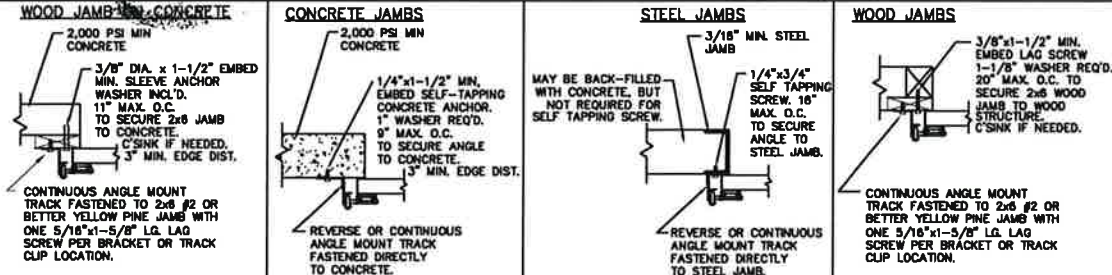
ONE 5/16" x 1-5/8" LAG SCREW SPACED AT THE SAME DISTANCES AS THE TRACK BOLTS (I.E. 3-1/2", 10", AND EVERY 12"). ALSO TWO LAG SCREWS LOCATED ABOVE VERTICAL/HORIZONTAL TRACK JUNCTION.

NOTE: TRACK CONFIGURATION ABOVE THE DOOR OPENING DOES NOT AFFECT THE WIND LOAD RATING OF THIS DOOR.



ANCHOR NOTE: FIRST (BOTTOM) ANCHOR STARTING AT NO MORE THAN HALF OF THE MAXIMUM ON-CENTER DISTANCE. HIGHEST ANCHOR INSTALLED AT LEAST AS HIGH AS THE DOOR OPENING.

NOTE: THE DESIGN OF THE SUPPORTING STRUCTURAL ELEMENTS ARE THE RESPONSIBILITY OF THE PROFESSIONAL OF RECORD FOR THE BUILDING OR STRUCTURE AND IN ACCORDANCE WITH CURRENT BUILDING CODES FOR THE LOADS LISTED ON THIS DRAWING.



CLOPAY CORP. ALL RIGHTS RESERVED.



Unless Stated Otherwise TOLERANCES are
 .0 = ±.031
 .00 = ±.015
 .000 = ±.005
 .0000 = ±.001
 Degrees = ±1/2"

Glopay CORPORATION
 8585 Duke Boulevard
 Mason, OH 45040 USA
 Tel. No. 513-770-4800
 Fax No. 513-770-4853

DESIGN ENGINEER: MARK WESTERFIELD, P.E.
 FLORIDA P.E. #48495, NC P.E. #23832, TEXAS P.E. #91513
 DESIGN LOADS: +25.0, -25.0 PSF
 TEST LOADS: +37.5, -37.5 PSF
 MANUFACTURING PRODUCT CODE: MPC: C-DSIE-1F447
 CLOPAY WINDLOAD RATING: W4
 DESCRIPTION: MODEL 240/3200/3220 WINDLOAD 24'-2"
 DRAWN BY: BFA DATE: 11/08/04 SCALE: NONE DWG. NO.: 103334
 CHECKED BY: - DATE: - SHEET 1 OF 1 SIZE B
 VER: TDI