

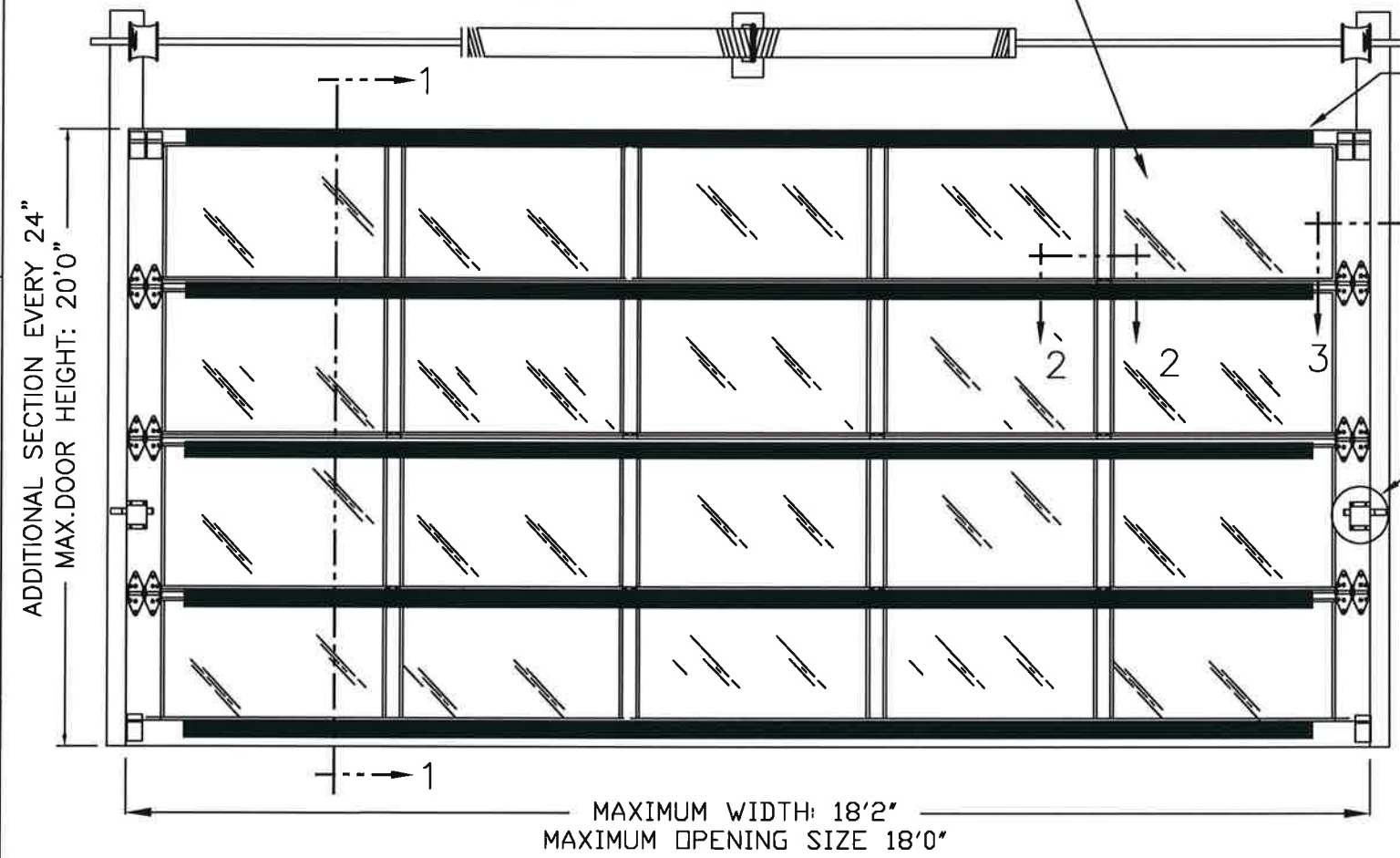
BRAND	MODEL
CLOPAY	904, 904U, AX, AXU
IDEAL	C4AL, C4ALU

THIS PRODUCT COMPLIES WITH THE 2018 IBC/IRC.

SHEET:  
1 OF 2

REVISIONS					DESCRIPTION
REV. NO.	ZONE	DATE	ECN NO.	APPVD:	
00	ALL	10/22		JDW	INITIAL RELEASE

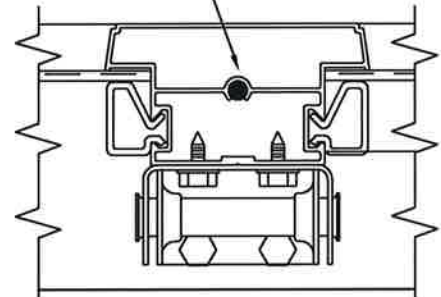
DSB LITES OR BETTER, ANNEALED OR TEMPERED. INSULATED GLAZING SHALL CONSIST OF 2 ANNEALED OR TEMPERED DSB LITES. MAX DLO 38.875" X 19.5".



3"x2"x1/4" ALUMINUM L-ANGLE. TOP OF EACH SECTION, PLUS ONE EXTRA ON BOTTOM OF DOOR.

CENTER STILES FASTENED TO RAILS WITH FULL LENGTH 1/4" DIA. THREADED STEEL RODS AND FLANGE NUTS.

3" x 2" x 1/4" ALUMINUM ANGLE ON TOP SECTION AND BOTTOM OF BOTTOM SECTION ATTACHED WITH (1) 1/4"x1" SELF-TAPPING SCREW PER STILE LOCATION AND AT EACH END.

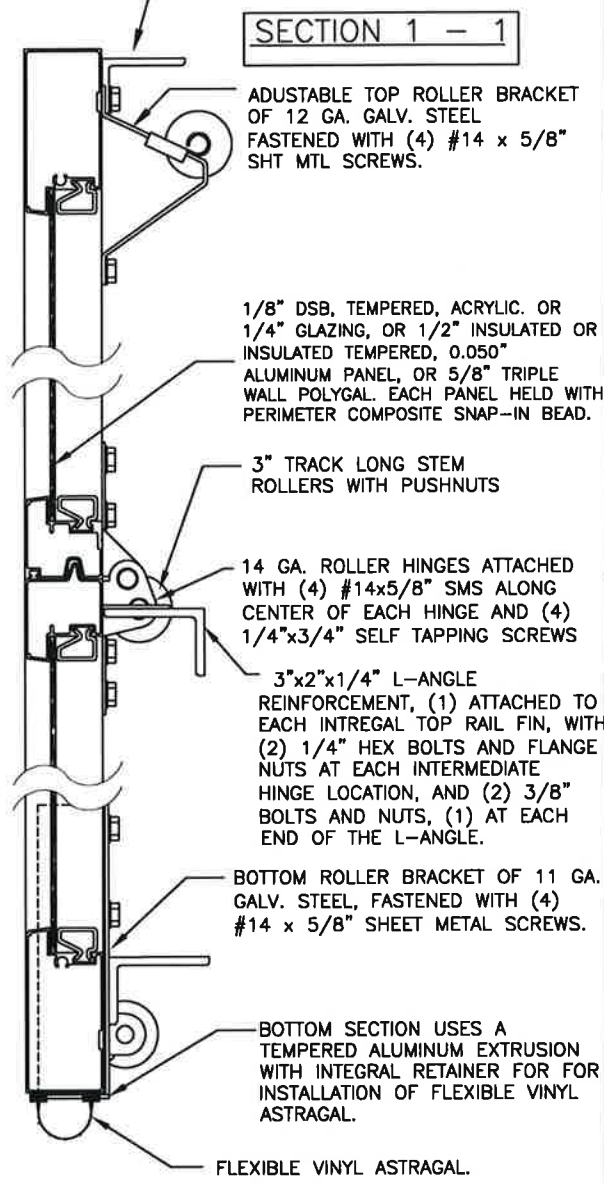


CENTER HINGES ATTACHED TO INTERM. BOTTOM RAIL WITH (2) #14x5/8" SMS AND TO FIN ON INTERM. TOP RAIL WITH (2) 1/4"-20x1" HEX HEAD MACHINE SCREWS AND NUTS.

TWO POINT LOCKING.

SECTIONS PER DOOR HEIGHT	
UP TO 6'0"	3
FROM 6'1" TO 8'0"	4
FROM 8'1" TO 10'0"	5
FROM 10'1" TO 12'0"	6
FROM 12'1" TO 14'0"	7
FROM 14'1" TO 16'0"	8
FROM 16'1" TO 18'0"	9
FROM 18'1" TO 20'0"	10

REINFORCEMENT: 3"x2"x1/4" L-ANGLE 6061 ALUMINUM



ADJUSTABLE TOP ROLLER BRACKET OF 12 GA. GALV. STEEL FASTENED WITH (4) #14 x 5/8" SHT MTL SCREWS.

1/8" DSB, TEMPERED, ACRYLIC, OR 1/4" GLAZING, OR 1/2" INSULATED OR INSULATED TEMPERED, 0.050" ALUMINUM PANEL, OR 5/8" TRIPLE WALL POLYGL. EACH PANEL HELD WITH PERIMETER COMPOSITE SNAP-IN BEAD.

3" TRACK LONG STEM ROLLERS WITH PUSHNUTS

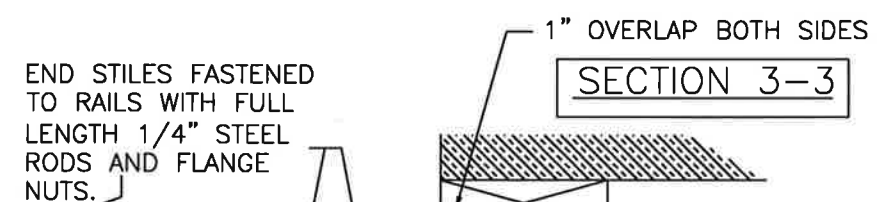
14 GA. ROLLER HINGES ATTACHED WITH (4) #14x5/8" SMS ALONG CENTER OF EACH HINGE AND (4) 1/4"x3/4" SELF TAPPING SCREWS

3"x2"x1/4" L-ANGLE REINFORCEMENT, (1) ATTACHED TO EACH INTEGRAL TOP RAIL FIN, WITH (2) 1/4" HEX BOLTS AND FLANGE NUTS AT EACH INTERMEDIATE HINGE LOCATION, AND (2) 3/8" BOLTS AND NUTS, (1) AT EACH END OF THE L-ANGLE.

BOTTOM ROLLER BRACKET OF 11 GA. GALV. STEEL, FASTENED WITH (4) #14 x 5/8" SHEET METAL SCREWS.

BOTTOM SECTION USES A TEMPERED ALUMINUM EXTRUSION WITH INTEGRAL RETAINER FOR FOR INSTALLATION OF FLEXIBLE VINYL ASTRAGAL.

FLEXIBLE VINYL ASTRAGAL.



END STILES FASTENED TO RAILS WITH FULL LENGTH 1/4" STEEL RODS AND FLANGE NUTS.

SECTION 3-3

12 GA. GALV. STEEL TRACK BRACKET FASTENED TO WOOD JAMB WITH ONE 5/16"x1-5/8" WOOD LAG SCREW PER BRACKET.

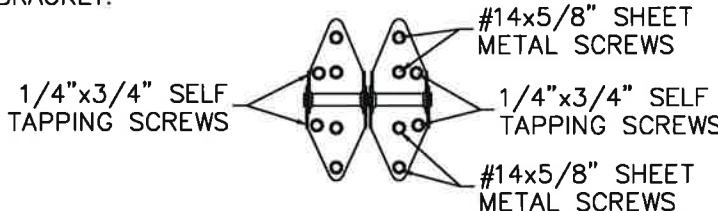
7/16" PUSH-NUT, ONE PER ROLLER.

INTERGAL FIN ON INTER. TOP RAILS NOTCH CUT AT END STILES.

SEE PAGE 2 FOR DIFFERENT JAMB CONFIGURATIONS.

MODEL 904 (6063-T5 ALUMINUM):  
TOP RAIL MIN THK 0.075"  
STD END STILE MIN THK 0.075"  
STD BTM RAIL MIN THK 0.075"  
CENTER STILE PMIN THK 0.075"  
INTER. TOP RAIL MIN THK 0.062" W/ 0.100" FIN  
INTER. BOTTOM RAIL MIN THK 0.062"

14 GAUGE DOUBLE END ROLLER HINGE FASTENERS



DESIGN ENGINEER:  
MARK WESTERFIELD, P.E.  
FLORIDA P.E. #48495, NC P.E. #23832, TEXAS P.E. #91513

DESIGN LOADS: +36.0, -40.0 PSF  
TEST LOADS: +54.0, -60.0 PSF

	8585 Duke Boulevard Mason, OH 45040 USA Tel. No. 513-770-4800 Fax No. 513-770-4853	CLOPAY WINDLOAD RATING <b>W6</b>
	DESCRIPTION: M/N 904 18' WIDE +36/-40 PSF	
DRAWN BY: JDW	DATE: 10/10/22	SCALE:
CHECKED BY:	DATE:	SHEET 1 OF 2
DWG. NO.: 105827	VERSION: TDI	

DWG. SIZE **B**

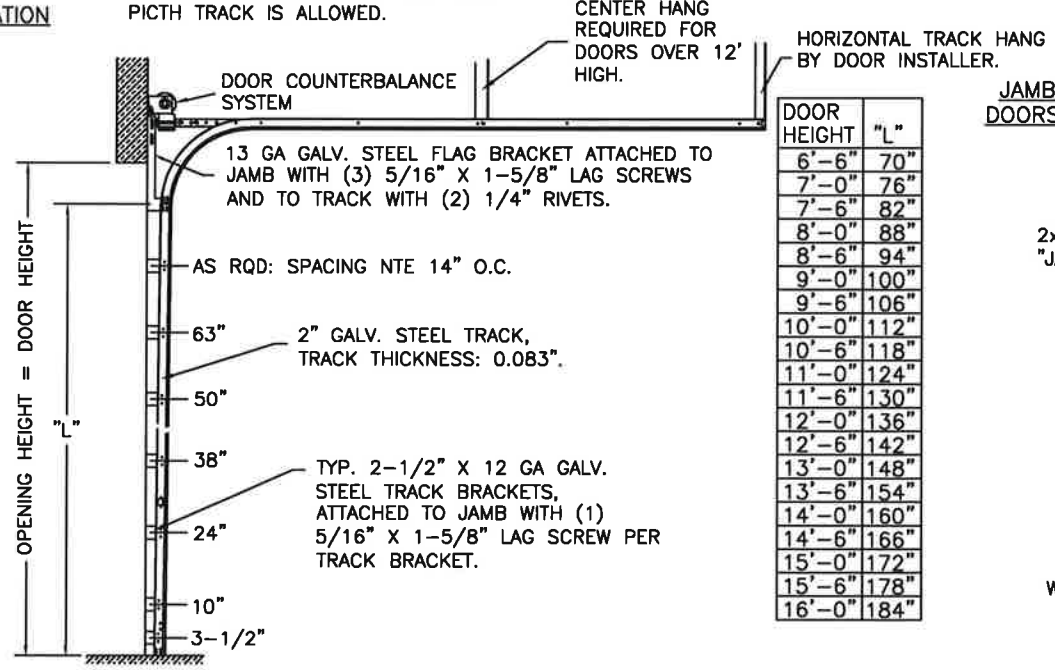
BRAND	MODEL
CLOPAY	904, 904U, AX, AXU
IDEAL	C4AL, C4ALU

SHEET:  
2 OF 2

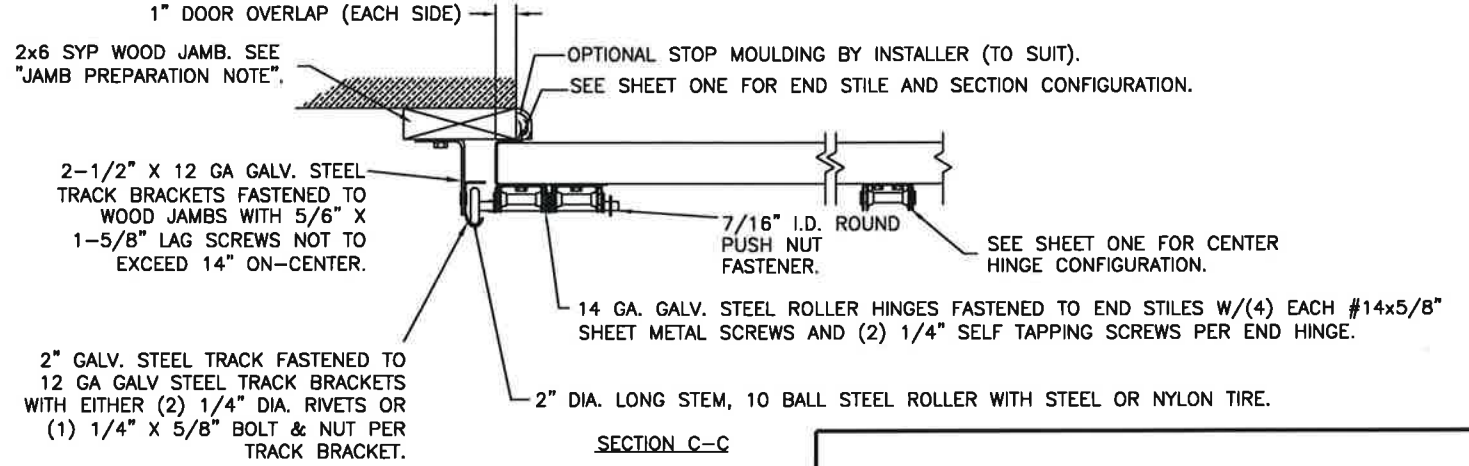
REVISIONS					
REV. NO.	ZONE	DATE	ECN NO.	APPVD.	DESCRIPTION
---	---	---	---	---	SEE PAGE 1 FOR REVISION DETAILS

NOTE: HORIZONTAL TRACK CONFIGURATION ABOVE THE DOOR OPENING DOES NOT AFFECT THE WIND LOAD RATING OF THIS DOOR. STANDARD LIFT, LOW HEADROOM, HIGH LIFT, VERTICAL LIFT OR FOLLOW THE ROOF PITCH TRACK IS ALLOWED.

2" TRACK CONFIGURATION



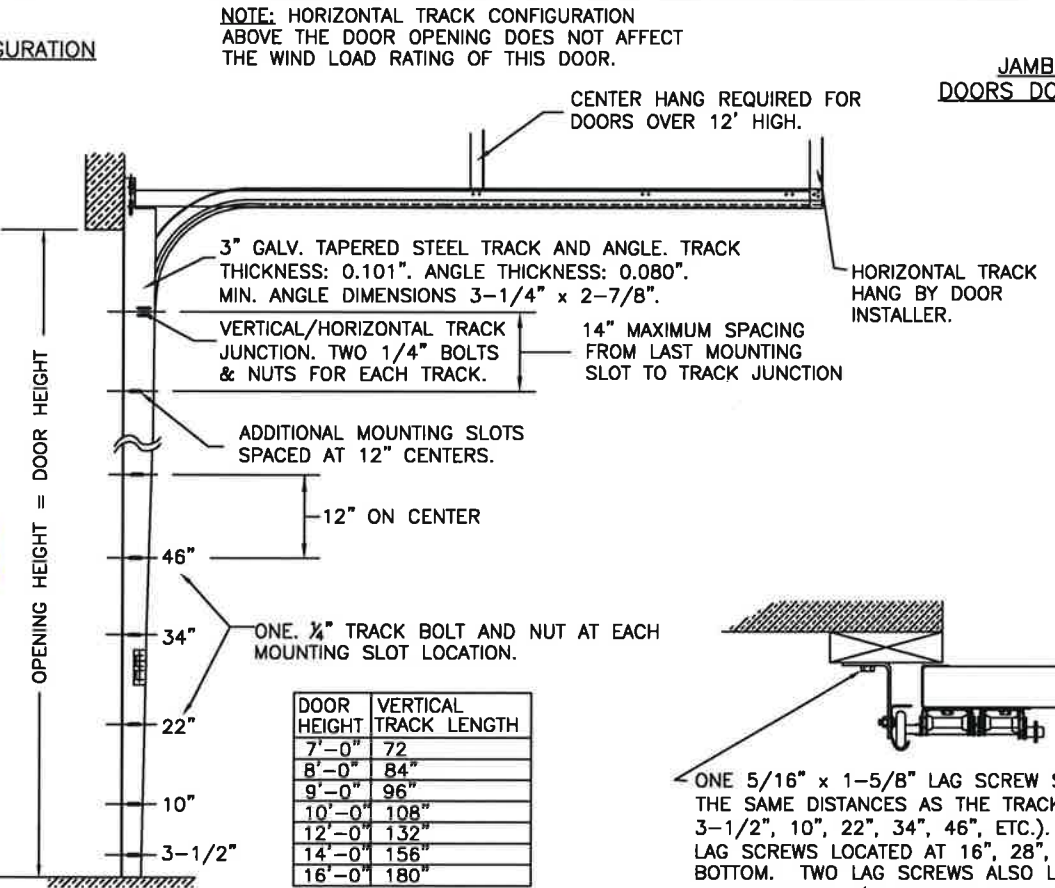
JAMB CONFIGURATION DOORS WITH 2" TRACK.



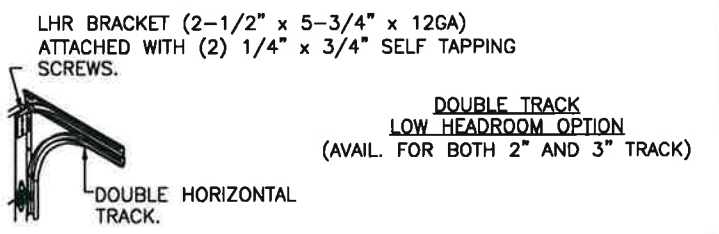
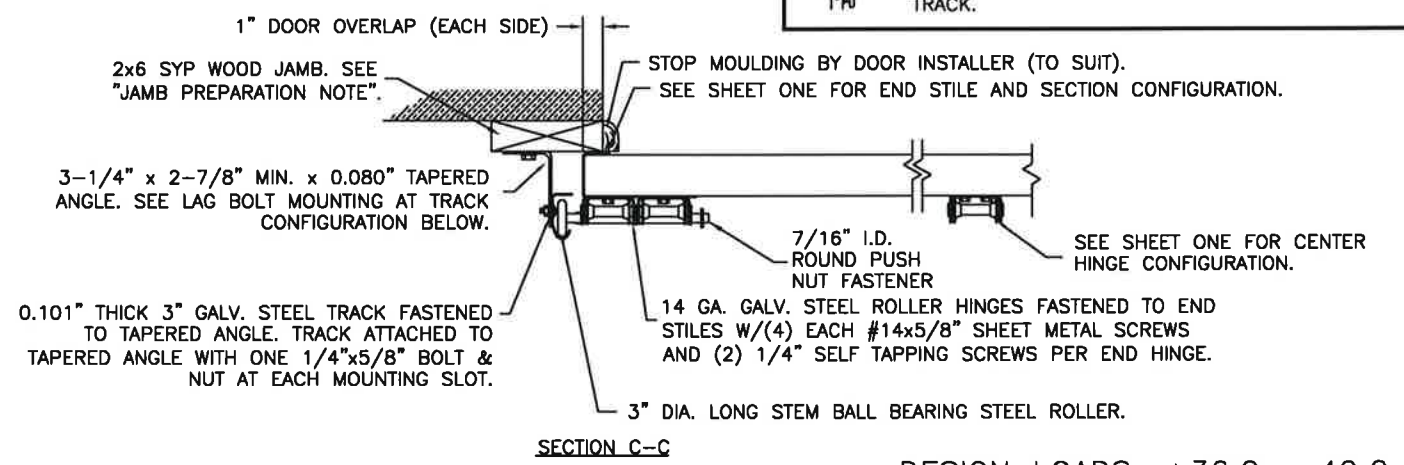
PREPARATION OF JAMBS BY OTHERS

JAMB NOTE: FOR JAMB TYPES AND JAMB ATTACHMENT FASTENER INFORMATION (INCLUDING FASTENER TYPE, SIZE AND SPACING) TO THE SUPPORTING STRUCTURE USE DASMA TDS-161. DESIGN OF THE SUPPORTING STRUCTURAL ELEMENTS SHALL BE THE RESPONSIBILITY OF THE PROFESSIONAL OF RECORD FOR THE BUILDING OR STRUCTURE AND IN ACCORDANCE WITH CURRENT BUILDING CODES FOR THE LOADS LISTED ON THIS DRAWING.

3" TRACK CONFIGURATION



JAMB CONFIGURATION DOORS WITH 3" TRACK.



DESIGN LOADS: +36.0, -40.0 PSF  
TEST LOADS: +54.0, -60.0 PSF



DESIGN ENGINEER:  
MARK WESTERFIELD, P.E.  
FLORIDA P.E. #48495, NC P.E. #23832, TEXAS P.E. #91513

<b>Clopay</b> CORPORATION	8585 Duke Boulevard Mason, OH 45040 USA Tel. No. 513-770-4800 Fax No. 513-770-4853	CLOPAY WINDLOAD RATING <b>W6</b>
DESCRIPTION: M/N 904 18' WIDE +36/-40 PSF		
DRAWN BY: JDW	DATE: 10/10/22	SCALE: DWG. B
CHECKED BY:	DATE:	SHEET 2 OF 2
DWG. NO.: 105827	VERSION: TDI	