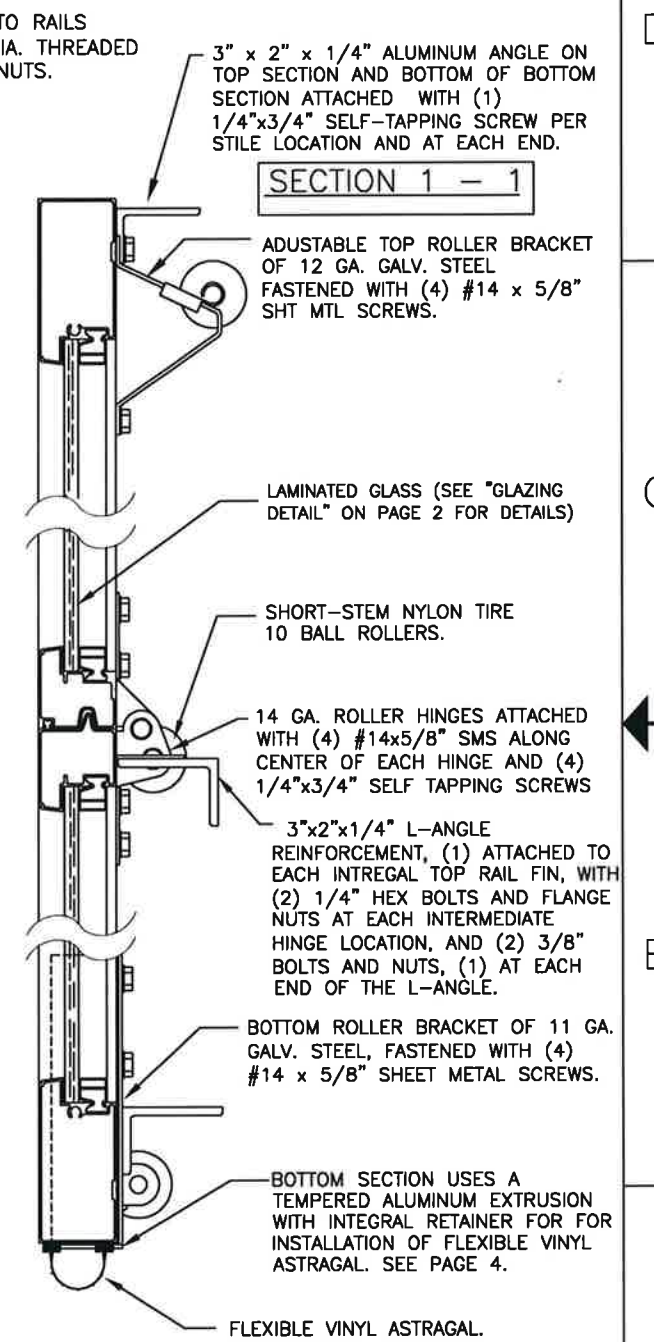
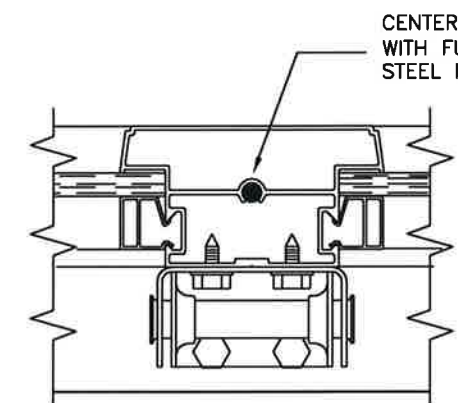
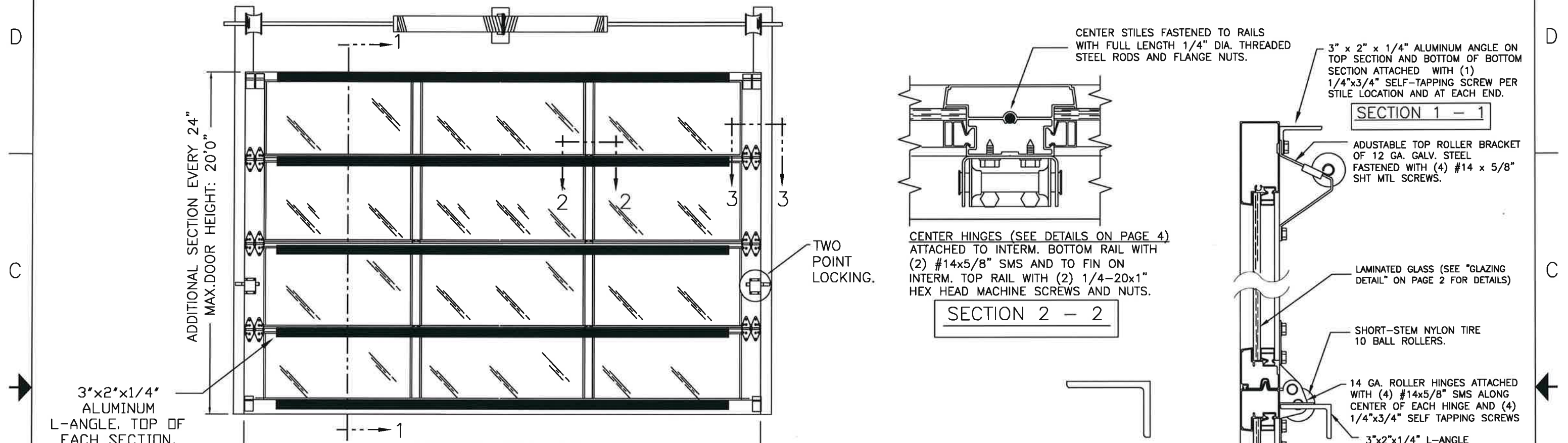


BRAND	MODEL
CLOPAY	904, 904U, AX, AXU
IDEAL	C4AL, C4ALU

THIS PRODUCT COMPLIES WITH THE 2018 IBC/IRC.

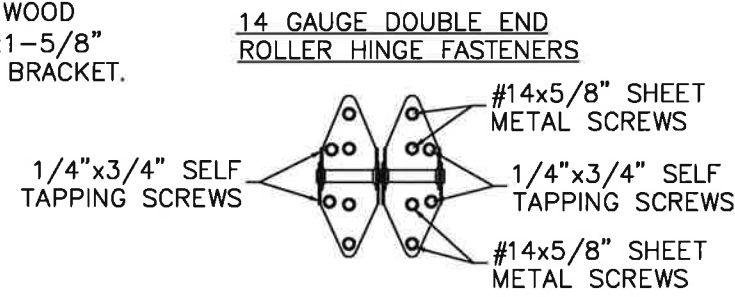
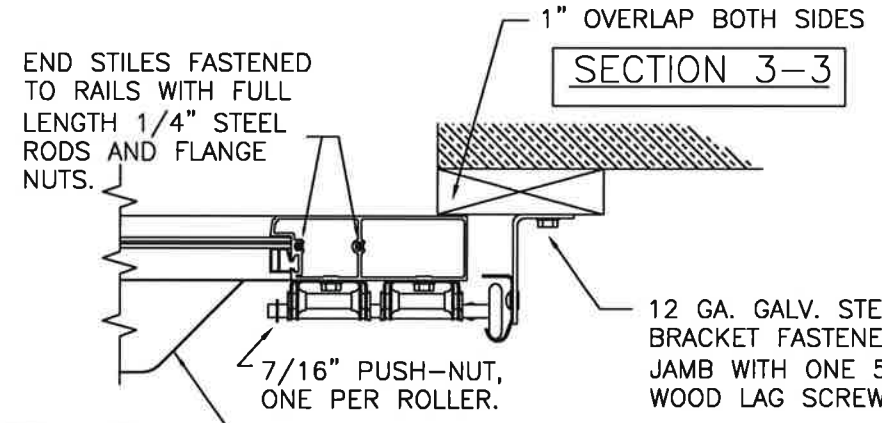
SHEET:
1 OF 4

REVISIONS					DESCRIPTION
REV. NO.	ZONE:	DATE:	ECN NO.	APPVD:	
00		10/22		JDW	INITIAL RELEASE



SECTIONS PER DOOR HEIGHT	
UP TO 6'0"	3
FROM 6'1" TO 8'0"	4
FROM 8'1" TO 10'0"	5
FROM 10'1" TO 12'0"	6
FROM 12'1" TO 14'0"	7
FROM 14'1" TO 16'0"	8
FROM 16'1" TO 18'0"	9
FROM 18'1" TO 20'0"	10

REINFORCEMENT:
3"x2"x1/4" L-ANGLE
6061 ALUMINUM



DESIGN ENGINEER:
MARK WESTERFIELD, P.E.
FLORIDA P.E. #48495, NC P.E. #23832, TEXAS P.E. #91513

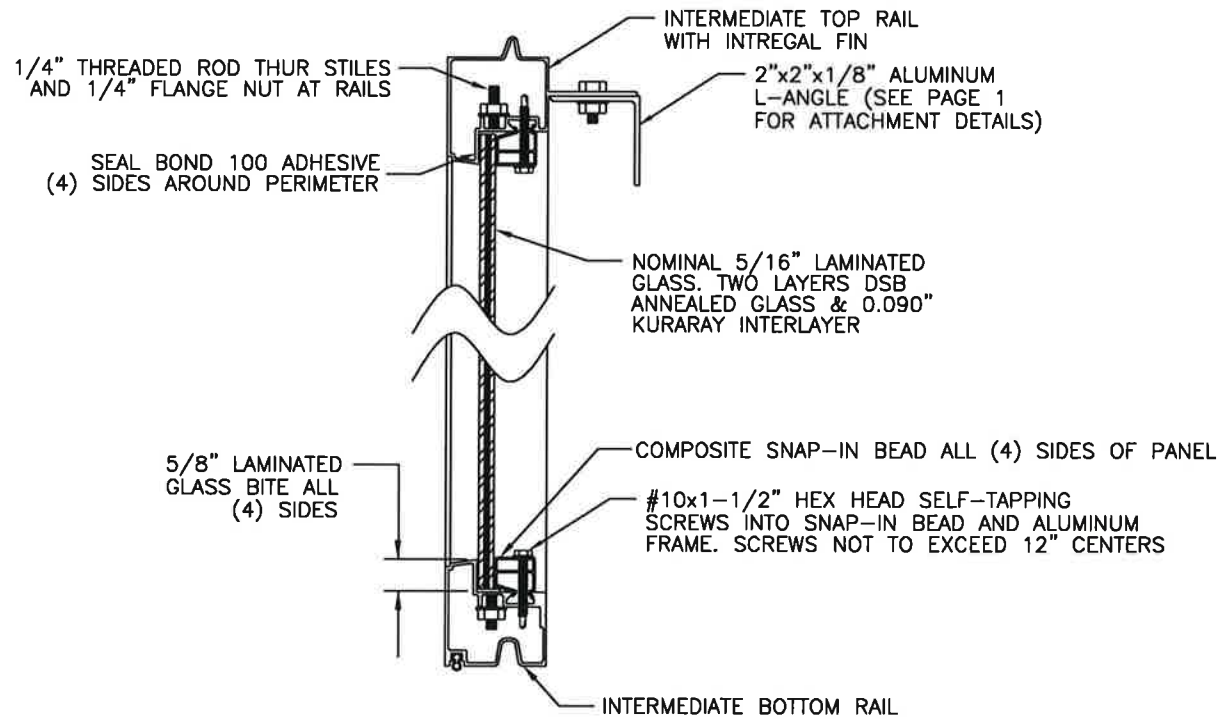
DESIGN LOADS: +52.0, -58.0 PSF

Clopay CORPORATION	8585 Duke Boulevard Mason, OH 45040 USA Tel. No. 513-770-4800 Fax No. 513-770-4853	CLOPAY WINDLOAD RATING W8
DESCRIPTION: M/N 904 12' WIDE +52/-58 PSF		
DRAWN BY: JDW	DATE: 10/10/22	SCALE:
CHECKED BY: JDW	DATE: 10/10/22	SHEET 1 OF 4
DWG. NO.: 105608	VERSION: TDI	

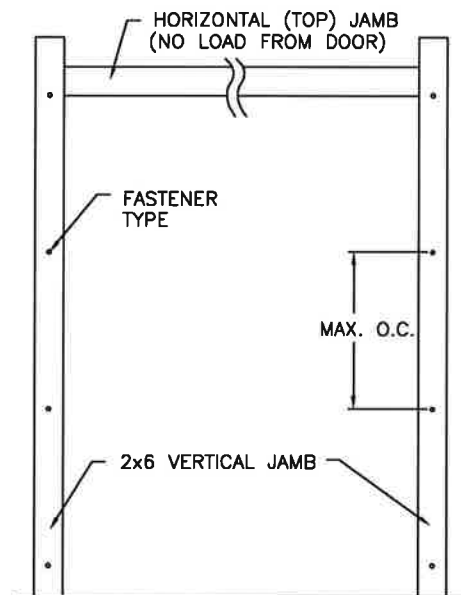
DWG. SIZE **B**

BRAND	MODEL
CLOPAY	904, 904U, AX, AXU
IDEAL	C4AL, C4ALU

SHEET: 2 OF 4		REVISIONS				
REV. NO.	ZONE:	DATE:	ECN NO.	APPVD:	DESCRIPTION	
---	---	---	---	---	SEE PAGE 1 FOR REVISION DETAILS	



GLAZING DETAIL
INTERMEDIATE SECTION SHOWN



JAMB TO SUPPORTING STRUCTURE ATTACHMENT

NOTES:

1. ALL THE LOAD FROM THE DOOR IS TRANSFERRED TO THE TRACK AND THEN FROM THE TRACK TO THE 2x6 VERTICAL SYP (GRADE #2 OR BETTER) JAMBS. NO LOAD FROM THE DOOR IS TRANSFERRED TO THE HORIZONTAL (TOP) JAMB.
2. EACH VERTICAL JAMB SEES A MAXIMUM DESIGN LOAD OF +312 LB. PER LINEAR FOOT OF JAMB.
3. ALL JAMB FASTENERS MAY BE (BUT ARE NOT REQUIRED TO BE) COUNTERSUNK TO PROVIDE A FLUSH MOUNTING SURFACE.
4. A 1/3 STRESS INCREASE FOR WIND LOAD WAS NOT USED IN THE CALCULATION OF ALLOWABLE LOADS FOR ANCHORS AND FASTENERS FOR STEEL, CONCRETE AND MASONRY.

PREPARATION OF JAMBS BY OTHERS

NOTE: THE DESIGN OF THE SUPPORTING STRUCTURAL ELEMENTS SHALL BE THE RESPONSIBILITY OF THE PROFESSIONAL OF RECORD FOR THE BUILDING OR STRUCTURE AND IN ACCORDANCE WITH CURRENT BUILDING CODES FOR THE LOADS LISTED ON THIS DRAWING.

2x6 JAMB TO SUPPORTING STRUCTURE ATTACHMENT
(NOT TO BE USED FOR ATTACHMENT OF TRACK ANGLE TO 2x6 VERTICAL JAMBS OR SUPPORTING STRUCTURE)

BUILDING TYPE	FASTENER TYPE	MAXIMUM ON-CENTER DISTANCE BETWEEN FASTENERS*	STEEL WASHERS REQUIRED?
BLOCK WALL	1/4" x 1-1/4" EMBED ULTRACON CONCRETE ANCHOR	5-1/4"	NO
GROUT-FILLED BLOCK WALL	1/4" x 1-3/4" EMBED ULTRACON CONCRETE ANCHOR	8-3/4"	NO
2,846 PSI MIN. CONCRETE	1/4" x 1-3/4" EMBED ULTRACON CONCRETE ANCHOR	18=1/4"	NO
2,000 PSI MIN. CONCRETE	1/4" x 1-3/4" EMBED ULTRACON CONCRETE ANCHOR	17"	NO
2,500 PSI MIN. CONCRETE	3/8" x 1-3/4" EMBED ITW TRUBOLT WEDGE CONCRETE ANCHOR WITH SYP 0.55 SG	16=1/2'	1" O.D.
WOOD FRAME (SYP 0.55 SG)	1/2" x 1-1/2" EMBED LAG SCREW WITH 1-3/8" O.D. WASHER	20"	YES
14 GA MIN. STEEL JAMB	1/4" -14 ITW BUILDEX TEKS SELF-DRILLING FASTENER	9"	NO
12 GA MIN. STEEL JAMB	1/4" -14 ITW BUILDEX TEKS SELF-DRILLING FASTENER	12-3/4"	NO
1/8" MIN. STEEL JAMB	1/4" -14 ITW BUILDEX TEKS SELF-DRILLING FASTENER	15-1/4"	NO

NOTE: FOR DOORS WITH CONTINUOUS OR REVERSE ANGLE TRACK, THESE VALUES CAN BE USED TO DIRECTLY ATTACH THE TRACK TO THE WALL.

* FIRST (BOTTOM) ANCHOR STARTING AT NO MORE THAN HALF OF THE MAXIMUM ON-CENTER DISTANCE. HIGHEST ANCHOR INSTALLED AT LEAST AS HIGH AS THE DOOR OPENING.
CLOPAY DOES NOT SUPPLY JAMB ATTACHMENT FASTENERS.
MINIMUM DISTANCE BETWEEN CENTER OF ANCHOR AND EDGE OF CONCRETE BLOCK: 2-1/2", EXCLUDING STUCCO THICKNESS.



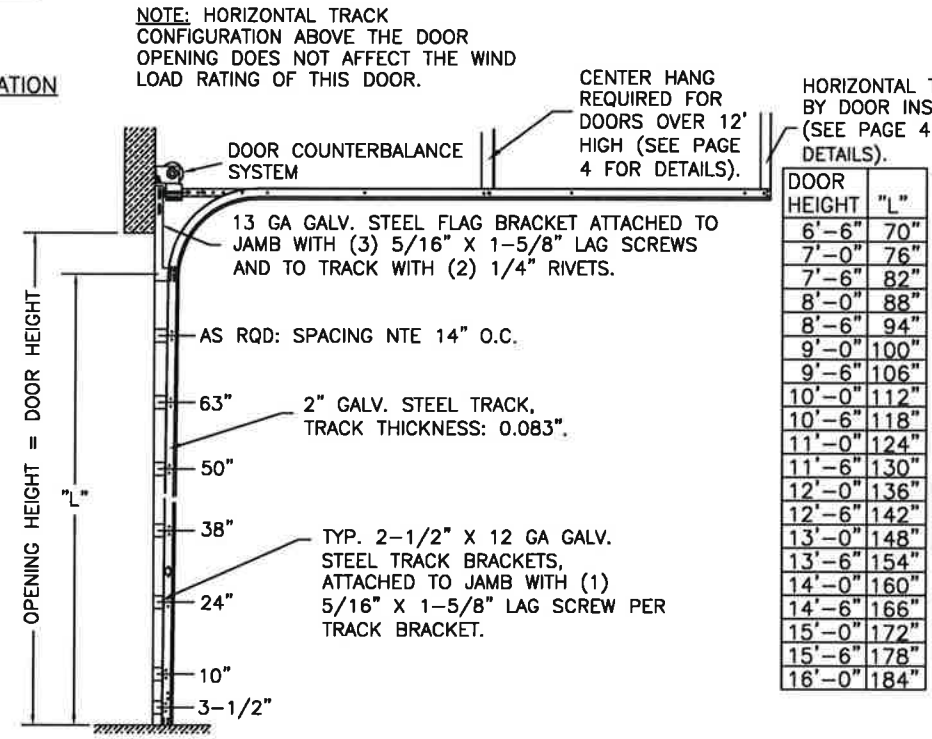
DESIGN ENGINEER:
MARK WESTERFIELD, P.E.
FLORIDA P.E. #48495, NC P.E. #23832, TEXAS P.E. #91513

	8585 Duke Boulevard Mason, OH 45040 USA Tel. No. 513-770-4800 Fax No. 513-770-4853	CLOPAY WINDLOAD RATING W8	
	DESCRIPTION: M/N 904 12' WIDE +52/-58 PSF		
DRAWN BY: JDW	DATE: 10/10/22	SCALE:	DWG. SIZE B
CHECKED BY: JDW	DATE: 10/10/22	SHEET 2 OF 4	
DWG. NO.: 105608	VERSION: TDI		

BRAND	MODEL
CLOPAY	904, 904U, AX, AXU
IDEAL	C4AL, C4ALU

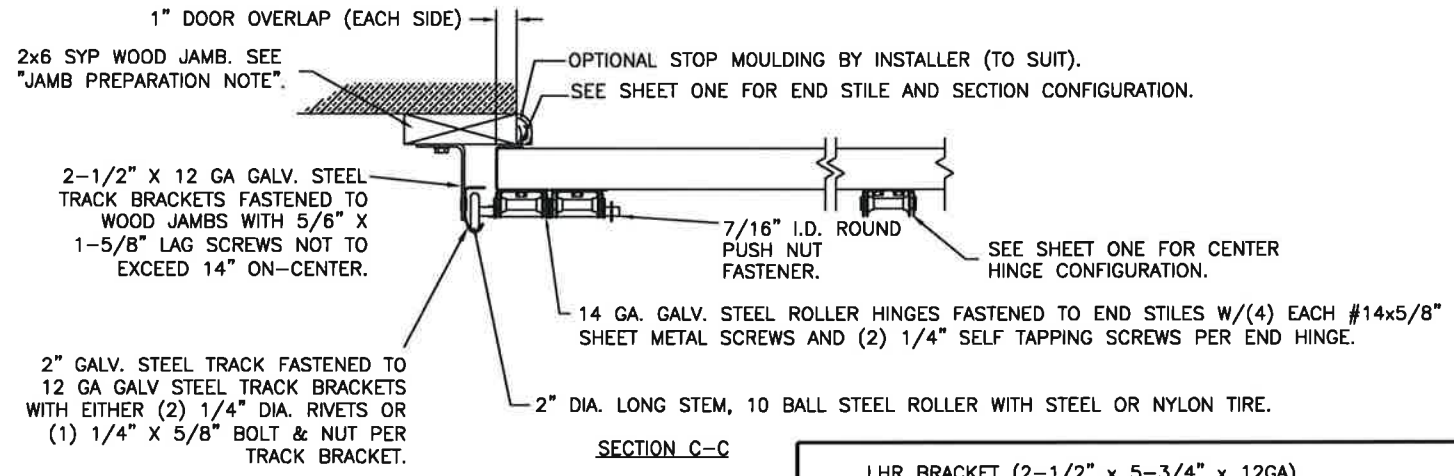
SHEET:	REVISIONS					
3 OF 4	REV. NO.	ZONE:	DATE:	ECN NO.	APPVD:	DESCRIPTION
	--	--	--	--	--	SEE PAGE 1 FOR REVISION DETAILS

2" TRACK CONFIGURATION



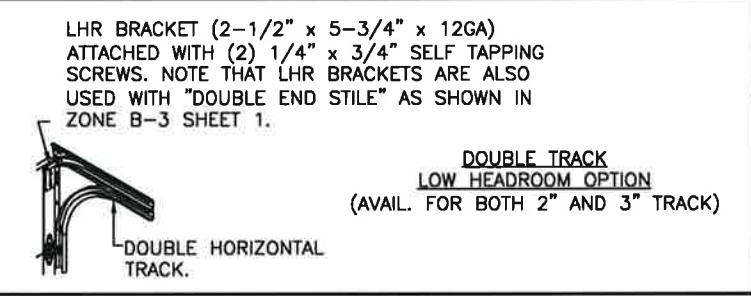
DOOR HEIGHT	"L"
6'-6"	70"
7'-0"	76"
7'-6"	82"
8'-0"	88"
8'-6"	94"
9'-0"	100"
9'-6"	106"
10'-0"	112"
10'-6"	118"
11'-0"	124"
11'-6"	130"
12'-0"	136"
12'-6"	142"
13'-0"	148"
13'-6"	154"
14'-0"	160"
14'-6"	166"
15'-0"	172"
15'-6"	178"
16'-0"	184"

JAMB CONFIGURATION DOORS WITH 2" TRACK.

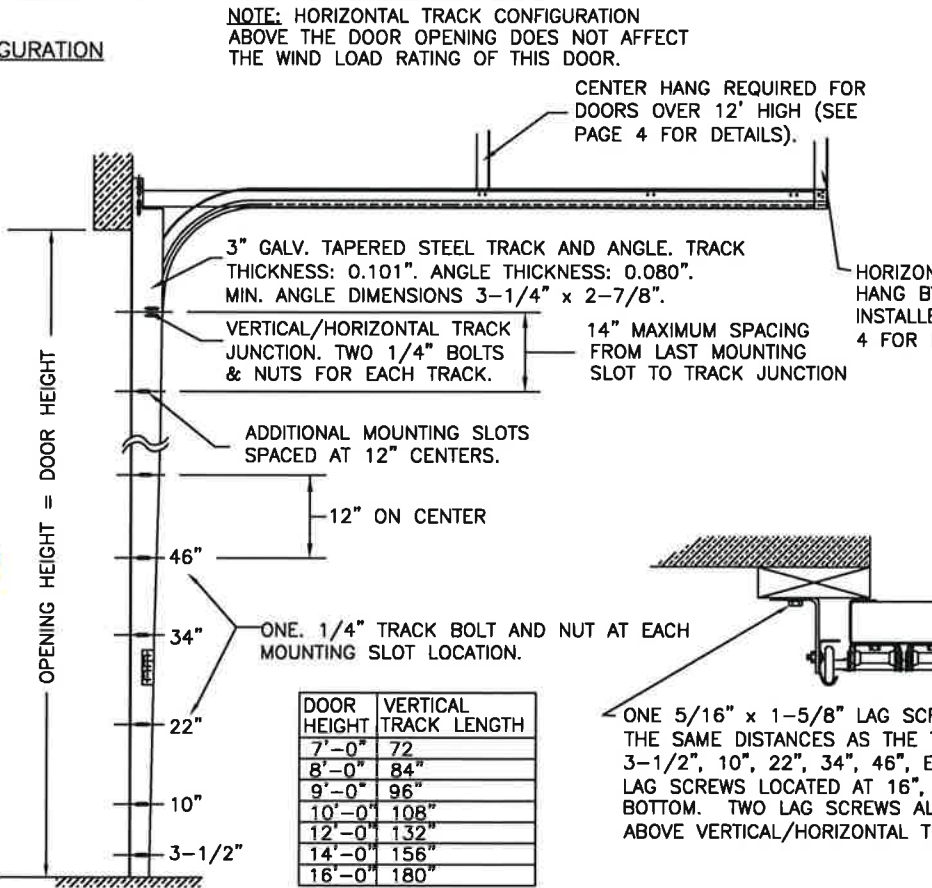


SECTION C-C

PREPARATION OF JAMBS BY OTHERS.

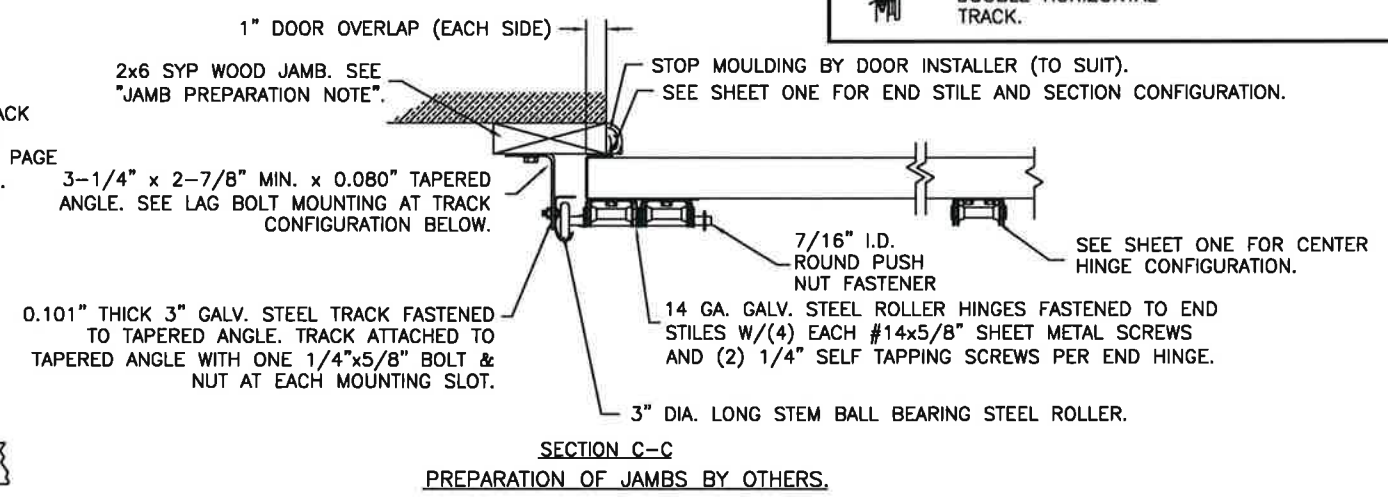


3" TRACK CONFIGURATION



DOOR HEIGHT	VERTICAL TRACK LENGTH
7'-0"	72"
8'-0"	84"
9'-0"	96"
10'-0"	108"
12'-0"	132"
14'-0"	156"
16'-0"	180"

JAMB CONFIGURATION DOORS WITH 3" TRACK.



SECTION C-C

PREPARATION OF JAMBS BY OTHERS.



DESIGN ENGINEER:
MARK WESTERFIELD, P.E.
FLORIDA P.E. #48495, NC P.E. #23832, TEXAS P.E. #91513

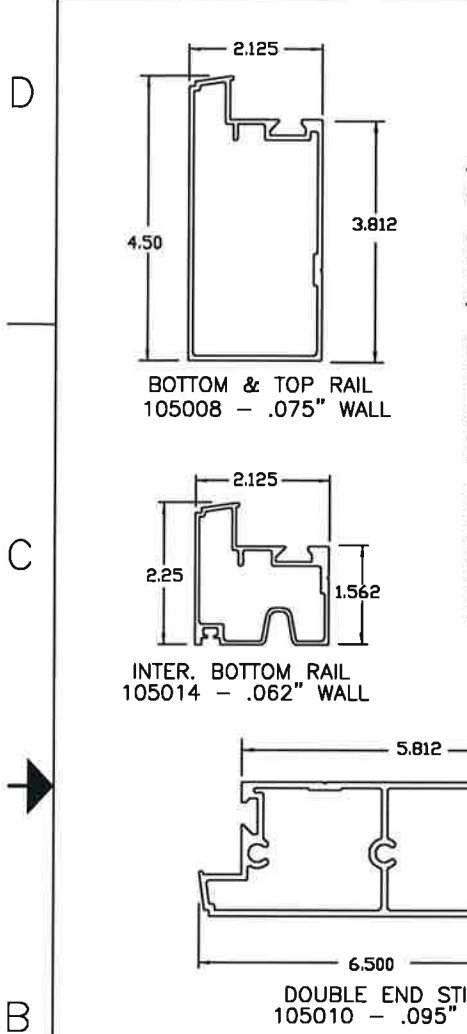
Clopay CORPORATION	8585 Duke Boulevard Mason, OH 45040 USA Tel. No. 513-770-4800 Fax No. 513-770-4853	CLOPAY WINDLOAD RATING W8
DESCRIPTION: M/N 904 12' WIDE +52/-58 PSF		
DRAWN BY: JDW	DATE: 10/10/22	SCALE: DWG. B
CHECKED BY: JDW	DATE: 10/10/22	SHEET 3 OF 4 SIZE B
DWG. NO.: 105608	VERSION: TDI	

BRAND	MODEL
CLOPAY	904, 904U, AX, AXU
IDEAL	C4AL, C4ALU

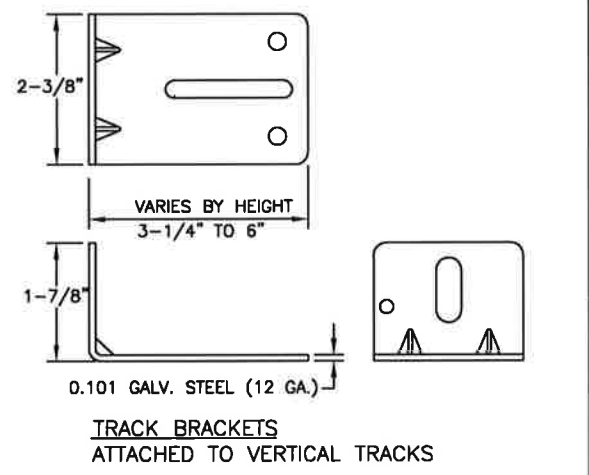
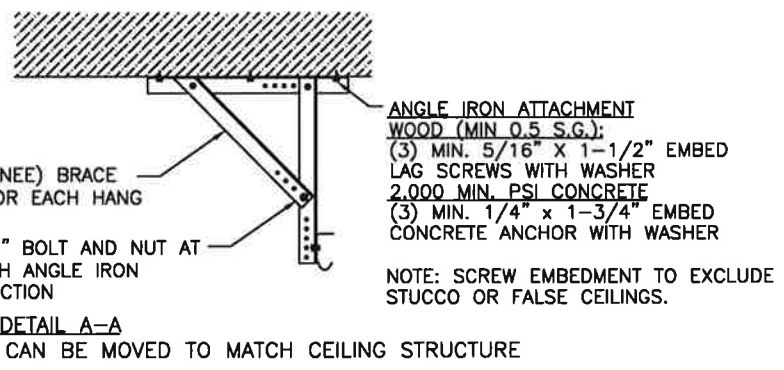
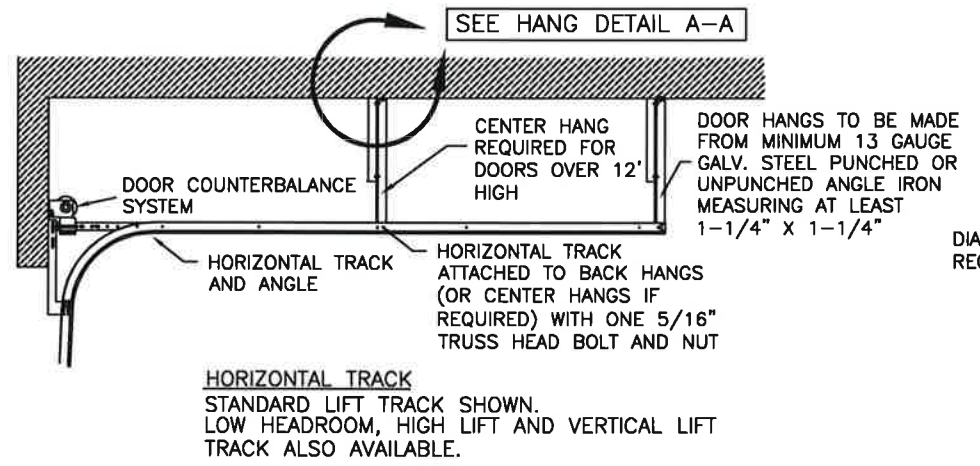
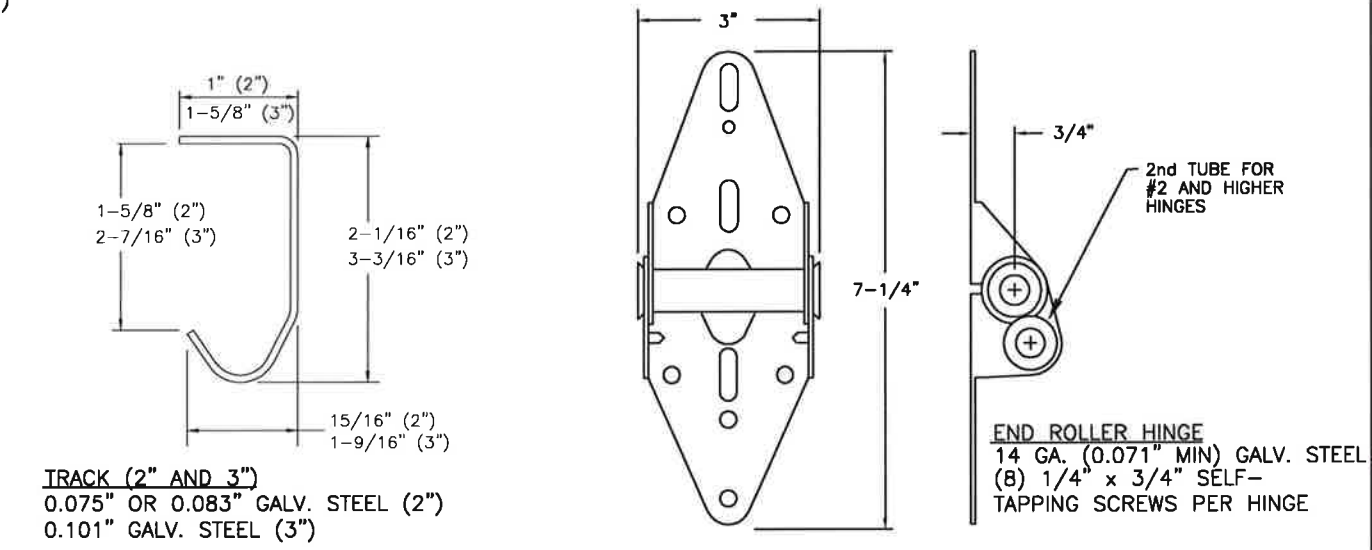
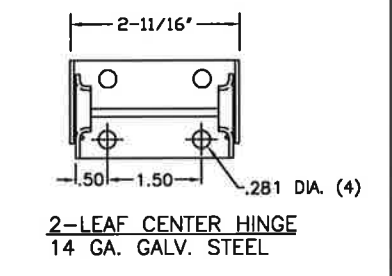
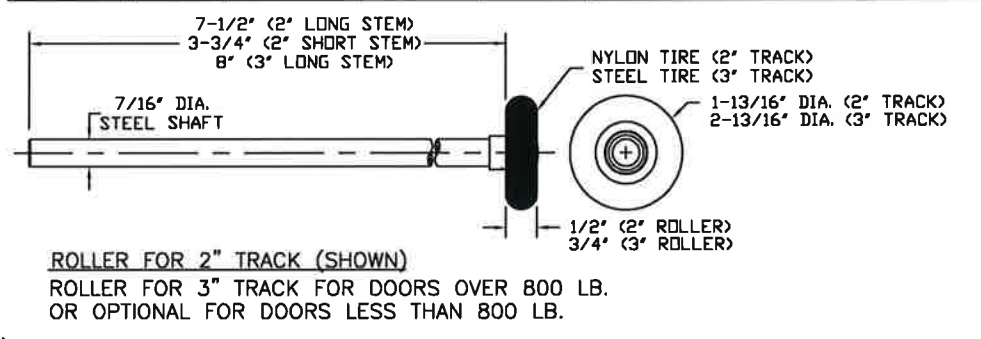
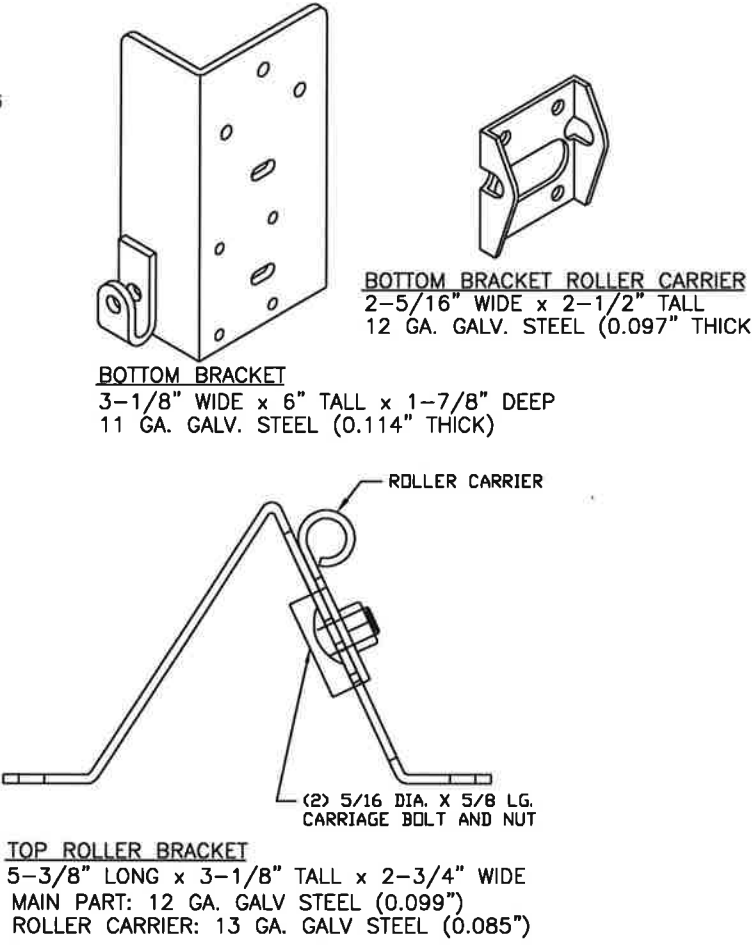
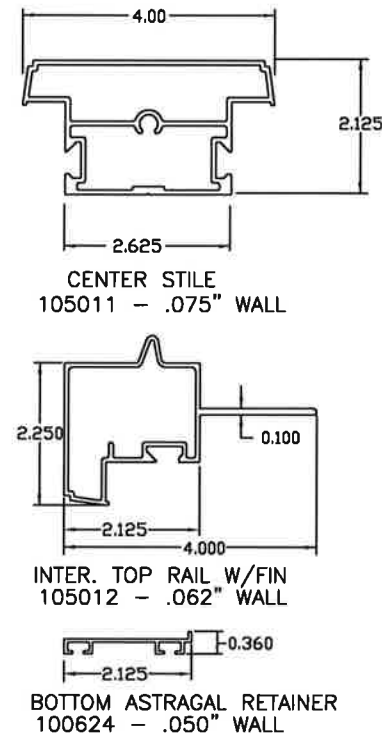
ALUMINUM PROFILES, HARDWARE & TRACK PARTS

SHEET: 4 OF 4

REVISIONS					DESCRIPTION
REV. NO.	ZONE	DATE	ECN NO.	APPVD:	
---	---	---	---	---	SEE PAGE 1 FOR REVISION DETAILS



ALUMINUM PROFILES (6063-T5)



DESIGN ENGINEER:
MARK WESTERFIELD, P.E.
FLORIDA P.E. #48495, NC P.E. #23832, TEXAS P.E. #91513

Clopay CORPORATION	8585 Duke Boulevard Mason, OH 45040 USA Tel. No. 513-770-4800 Fax No. 513-770-4853	CLOPAY WINDLOAD RATING W8
	DESCRIPTION: M/N 904 12' WIDE +52/-58 PSF	
DRAWN BY: JDW	DATE: 10/10/22	SCALE:
CHECKED BY: JDW	DATE: 10/10/22	SHEET 4 OF 4
DWG. NO.: 105608	VERSION: TDI	