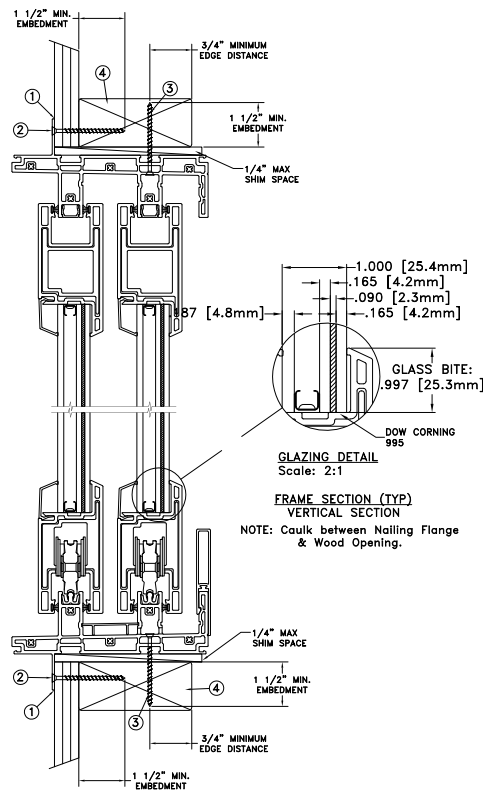
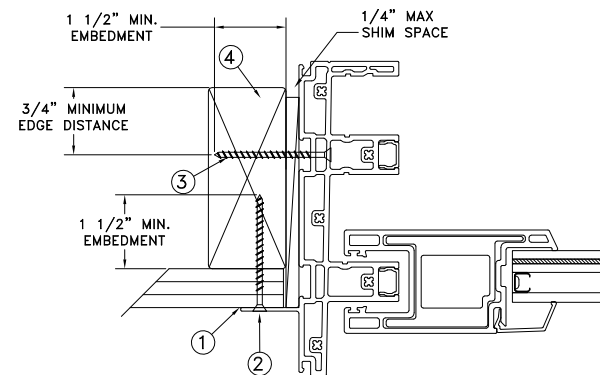


TYPICAL ELEVATION WITH FASTENER SPACING



GLAZING DETAIL
Scale: 2:1
FRAME SECTION (TYP)
VERTICAL SECTION
NOTE: Caulk between Nailing Flange & Wood Opening.

NAILFIN / THRU JAMB INSTALLATION



FRAME JAMB SECTION (TYP)
HORIZONTAL SECTION

NOTE: Caulk between Nailing Flange
& Wood Opening.

Max Frame	DP	IMPACT
71 3/4 x 79 13/16	+50/-55	YES

WINDZONE 3

Installation Notes:

1. Seal flange/frame to substrate. Sill shall be set on a continuous serpentine bead of structural grade silicone caulk when no fastener is used to anchor the sill (typical).
2. Use #8 PH or greater fastener through the nailfin with sufficient length to penetrate a minimum of 1 1/2" into the wood framing. For 2x wood frame substrate (min. S.G. = 0.42)
3. Use #8 PH or greater fastener through the pre-drilled holes in the head/sill tracks at the center (2) towers with sufficient length to penetrate a minimum of 1 1/2" into the wood framing. See additional details for location and spacing.
4. Host structure (wood buck, masonry, steel) to be designed and anchored to properly transfer all loads to the structure. The host structure is the responsibility of the architect or engineer of record for the project of installation.

General Notes:

1. The product shown herein is designed, tested and manufactured to comply with the wind load criteria of the 2018 International Residential Code (IRC), and 2018 International Building Code (IBC).
2. All glazing shall conform to ASTM E1300.
3. At minimum, glazing is 4.8mm tempered - 10.0mm airspace - 4.2mm annealed - 2.3mm SGP Interlayer by Kuraray - 4.2mm annealed insulating glass.
4. Use structural or composite shims where required.

This schedule addresses only the fasteners required to anchor the unit to achieve the rated design pressure and impact performance (where applicable) up to the size limitations noted. It is not intended as a guide to the installation process and does not address the sealing consideration that may arise in different wall conditions. For the complete installation procedure, see the instructions packaged with the unit or go to www.jeld-wen.com/resources/installation.

DISCLAIMER:

This drawing and its contents are confidential and are not to be reproduced or copied in whole or in part or used or disclosed to others except as authorized by JELD-WEN Inc.



2021.05.24 07:31:01 -04'00'

JOSEPH A. REED, P.E.

Texas No. 100777
5 Leigh Drive
York, PA. 17406
(717) 846-1200

DATE:
10/26/2020

DRAWN BY:
J.HAWKINS

CHECKED BY:
D.CROWELL

APPROVED BY:
J.GOOSEN

RECORD No:
D014906

REPORT No:
G0960.02-301-47

SCALE:
NTS

TITLE:

JELD-WEN

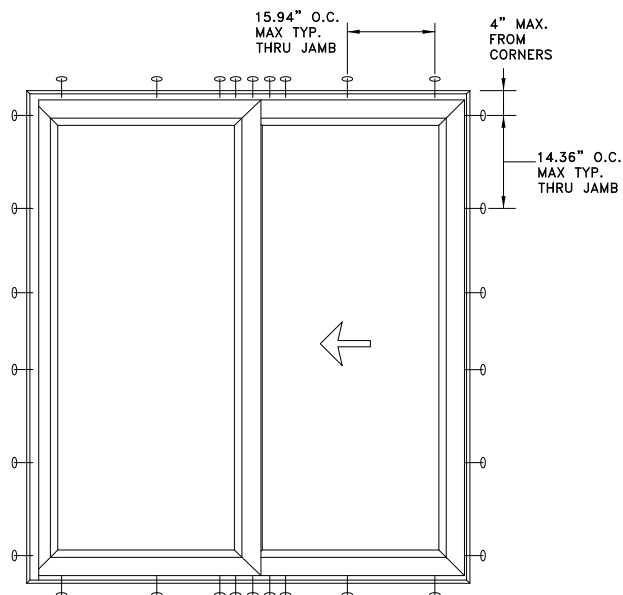
3737 LAKEPORT BLVD.
KLAMATH FALLS OR, 97601
PHONE: (800) 535-3936

Premium Vinyl Multi-Slide Patio Door
2-Panel 2-Track OX Stack

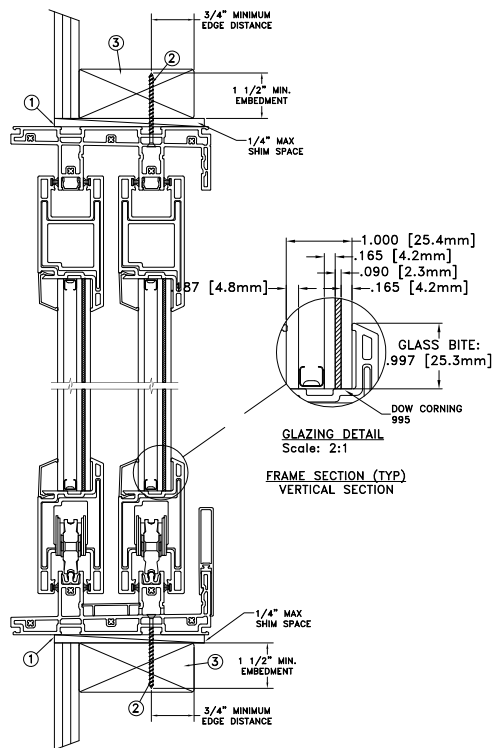
CAD DWG. No.:
PremVinylMTSLDR2 Cert

REV:
A

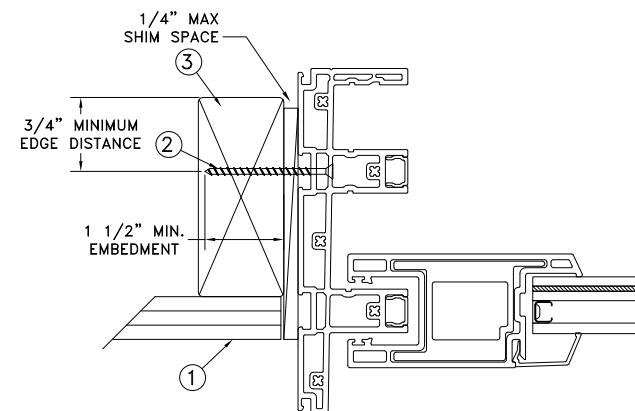
SHEET



TYPICAL ELEVATION WITH FASTENER SPACING



THROUGH FRAME INSTALLATION



FRAME JAMB SECTION (TYP)
HORIZONTAL SECTION

Max Frame	DP	IMPACT
71 3/4 x 79 13/16	+50/-55	YES

WINDZONE 3

Installation Notes:

1. Seal flange/frame to substrate. Sill shall be set on a continuous serpentine bead of structural grade silicone caulk when no fastener is used to anchor the sill (typical).
2. Use #12 PH or greater fastener through the pre-drilled holes in the head/sill tracks at the center (2) towers with sufficient length to penetrate a minimum of 1 1/2" into the wood framing. See additional details for location and spacing. For 2X wood frame substrate (min. SG = 0.42)
3. Host structure (wood buck, masonry, steel) to be designed and anchored to properly transfer all loads to the structure. The host structure is the responsibility of the architect or engineer of record for the project of installation.

General Notes:

1. The product shown herein is designed, tested and manufactured to comply with the wind load criteria of the 2018 International Residential Code (IRC), and 2018 International Building Code (IBC).
2. All glazing shall conform to ASTM E1300.
3. At minimum, glazing is 4.8mm tempered - 10.0mm airspace - 4.2mm annealed - 2.3mm SGP Interlayer by Kuraray - 4.2mm annealed insulating glass.
4. Use structural or composite shims where required.

This schedule addresses only the fasteners required to anchor the unit to achieve the rated design pressure and impact performance (where applicable) up to the size limitations noted. It is not intended as a guide to the installation process and does not address the sealing consideration that may arise in different wall conditions. For the complete installation procedure, see the instructions packaged with the unit or go to www.jeld-wen.com/resources/installation.

DISCLAIMER:

This drawing and its contents are confidential and are not to be reproduced or copied in whole or in part or used or disclosed to others except as authorized by JELD-WEN Inc.



2021.05.24 07:31:01 -04'00'

JOSEPH A. REED, P.E.
Texas No. 100777
5 Leigh Drive
York, PA. 17406
(717) 846-1200

DATE:
10/26/2020

DRAWN BY:
J.HAWKINS

SCALE:
NTS

CHECKED BY:
D.CROWELL

TITLE:

APPROVED BY:
J.GOOSEN

RECORD No:
D014906

REPORT No:
G0960.02-301-47

JELD-WEN

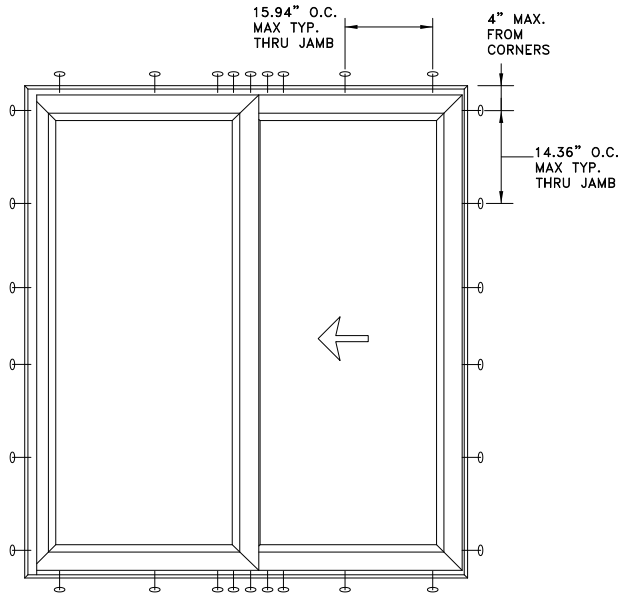
3737 LAKEPORT BLVD.
KLAMATH FALLS OR, 97601
PHONE: (800) 535-3936

Premium Vinyl Multi-Slide Patio Door
2-Panel 2-Track OX Stack

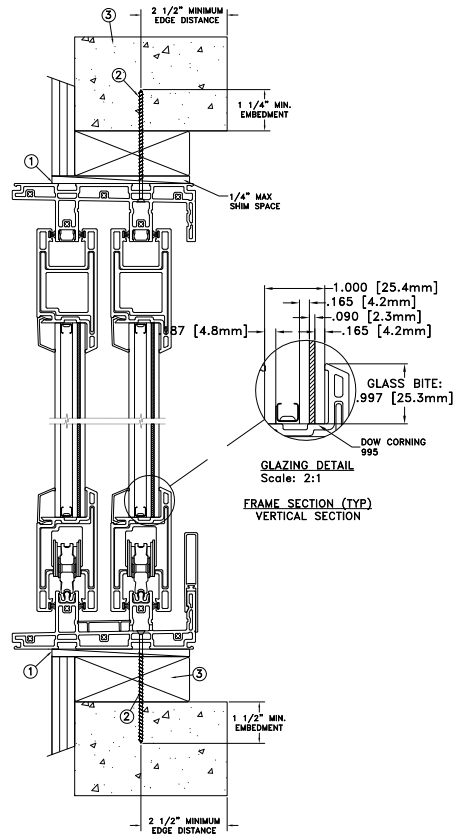
CAD DWG. No.:
PremVinylMTSLDR2 Cert

REV: A

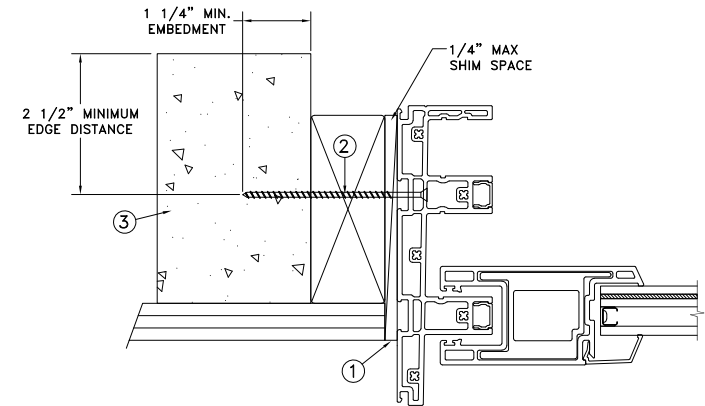
SHEET



TYPICAL ELEVATION WITH FASTENER SPACING



CONCRETE/MASONRY INSTALLATION



FRAME JAMB SECTION (TYP)
HORIZONTAL SECTION

Max Frame	DP	IMPACT
71 3/4 x 79 13/16	+50/-55	YES

WINDZONE 3

Installation Notes:

1. Seal flange/frame to substrate. Sill shall be set on a continuous serpentine bead of structural grade silicone caulk when no fastener is used to anchor the sill (typical).
2. Use 3/16" Tapcon or equivalent fasteners through the pre-drilled holes in the head/sill tracks at the center (2) towers with sufficient length to penetrate a minimum of 1 1/2" into concrete or masonry at each location with a 2 1/2" min. from edge distance. For concrete (min. fc = 3000 psi) or masonry substrate (CMU shall adhere to ASTM C90).
3. Host structure (wood buck, masonry, steel) to be designed and anchored to properly transfer all loads to the structure. The host structure is the responsibility of the architect or engineer of record for the project of installation.

General Notes:

1. The product shown herein is designed, tested and manufactured to comply with the wind load criteria of the 2018 International Residential Code (IRC), and 2018 International Building Code (IBC).
2. All glazing shall conform to ASTM E1300.
3. At minimum, glazing is 4.8mm tempered - 10.0mm airspace - 4.2mm annealed - 2.3mm SGP Interlayer by Kuraray - 4.2mm annealed insulating glass.
4. Use structural or composite shims where required.

This schedule addresses only the fasteners required to anchor the unit to achieve the rated design pressure and impact performance (where applicable) up to the size limitations noted. It is not intended as a guide to the installation process and does not address the sealing consideration that may arise in different wall conditions. For the complete installation procedure, see the instructions packaged with the unit or go to www.jeld-wen.com/resources/installation.

DISCLAIMER:

This drawing and its contents are confidential and are not to be reproduced or copied in whole or in part or used or disclosed to others except as authorized by JELD-WEN Inc.



2021.05.24 07:31:01 -04'00'

JOSEPH A. REED, P.E.
Texas No. 100777
5 Leigh Drive
York, PA. 17406
(717) 846-1200

DATE:
10/26/2020

DRAWN BY:
J.HAWKINS

SCALE:
NTS

CHECKED BY:
D.CROWELL

TITLE:

APPROVED BY:
J.GOOSEN

RECORD No:
D014906

REPORT No:
G0960.02-301-47

JELD-WEN

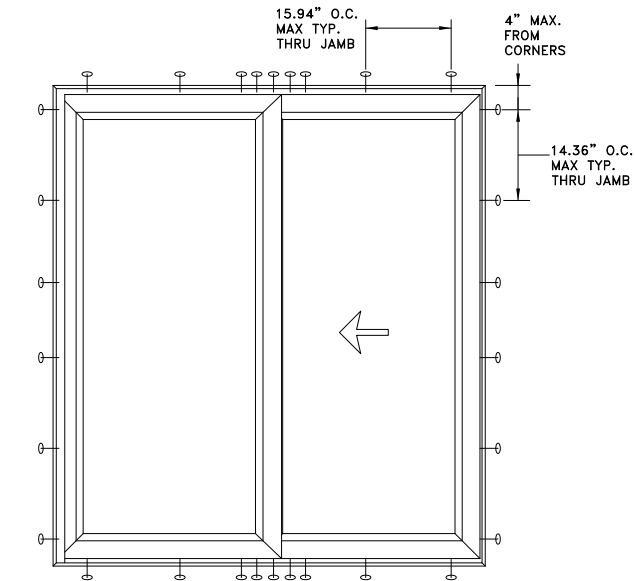
3737 LAKEPORT BLVD.
KLAMATH FALLS OR, 97601
PHONE: (800) 535-3936

Premium Vinyl Multi-Slide Patio Door
2-Panel 2-Track OX Stack

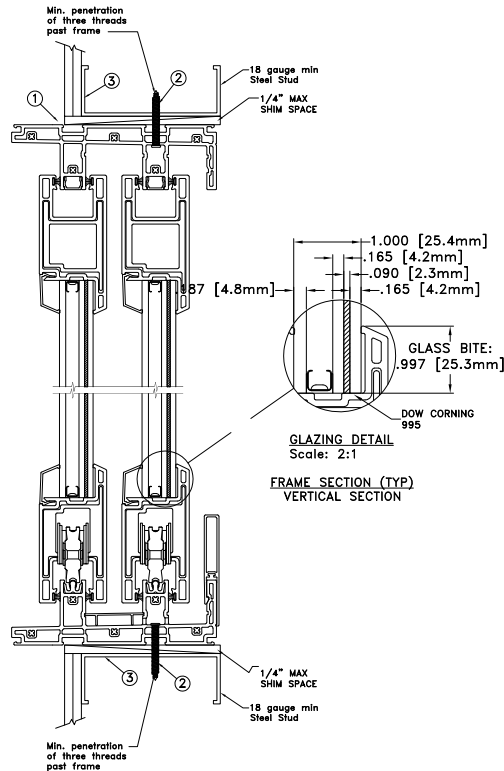
CAD DWG. No.:
PremVinylMTSLDR2 Cert

REV:
A

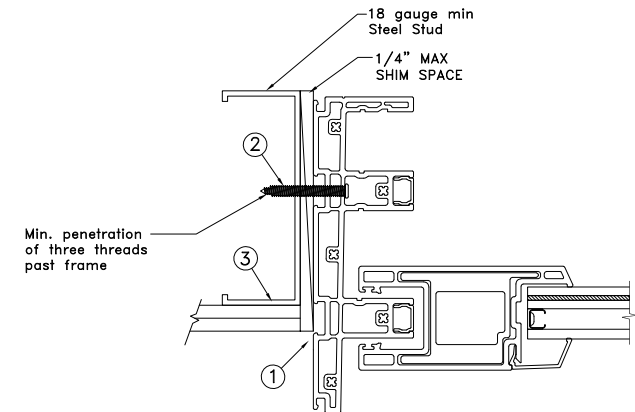
SHEET



TYPICAL ELEVATION WITH FASTENER SPACING



STEEL INSTALLATION



FRAME JAMB SECTION (TYP)
HORIZONTAL SECTION

Max Frame		DP	IMPACT
71	3/4 x 79 13/16	+50/-55	YES

WINDZONE 3

Installation Notes:

1. Seal flange/frame to substrate. Sill shall be set on a continuous serpentine bead of structural grade silicone caulk when no fastener is used to anchor the sill (typical).
2. For anchoring into metal framing use #12 TEK Self-Tapping screws with sufficient length to achieve a minimum penetration of three threads past the frame thickness. Steel substrate min. 18ga., fy = 33 ksi.
3. Host structure (wood buck, masonry, steel) to be designed and anchored to properly transfer all loads to the structure. The host structure is the responsibility of the architect or engineer of record for the project of installation.

General Notes:

1. The product shown herein is designed, tested and manufactured to comply with the wind load criteria of the 2018 International Residential Code (IRC), and 2018 International Building Code (IBC).
2. All glazing shall conform to ASTM E1300.
3. At minimum, glazing is 4.8mm tempered - 10.0mm airspace - 4.2mm annealed - 2.3mm SGP Interlayer by Kuraray - 4.2mm annealed insulating glass.
4. Use structural or composite shims where required.

This schedule addresses only the fasteners required to anchor the unit to achieve the rated design pressure and impact performance (where applicable) up to the size limitations noted. It is not intended as a guide to the installation process and does not address the sealing consideration that may arise in different wall conditions. For the complete installation procedure, see the instructions packaged with the unit or go to www.jeld-wen.com/resources/installation.

DISCLAIMER:

This drawing and its contents are confidential and are not to be reproduced or copied in whole or in part or used or disclosed to others except as authorized by JELD-WEN Inc.



2021.05.24 07:31:01 -04'00'

JOSEPH A. REED, P.E.
Texas No. 100777
5 Leigh Drive
York, PA. 17406
(717) 846-1200

DATE:
10/26/2020

DRAWN BY:
J.HAWKINS

SCALE:
NTS

CHECKED BY:
D.CROWELL

TITLE:

APPROVED BY:
J.GOOSEN

RECORD No:
D014906

REPORT No:
G0960.02-301-47

JELD-WEN

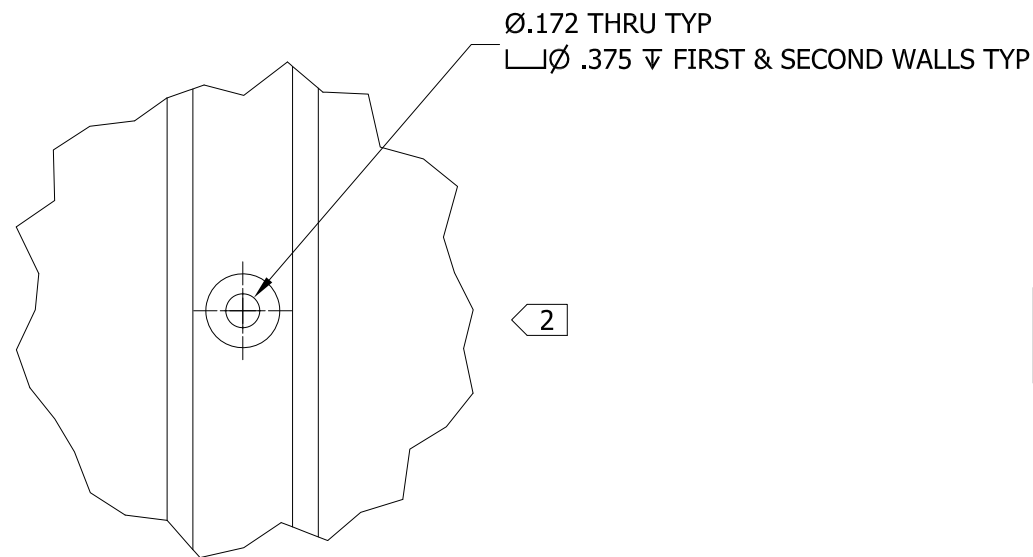
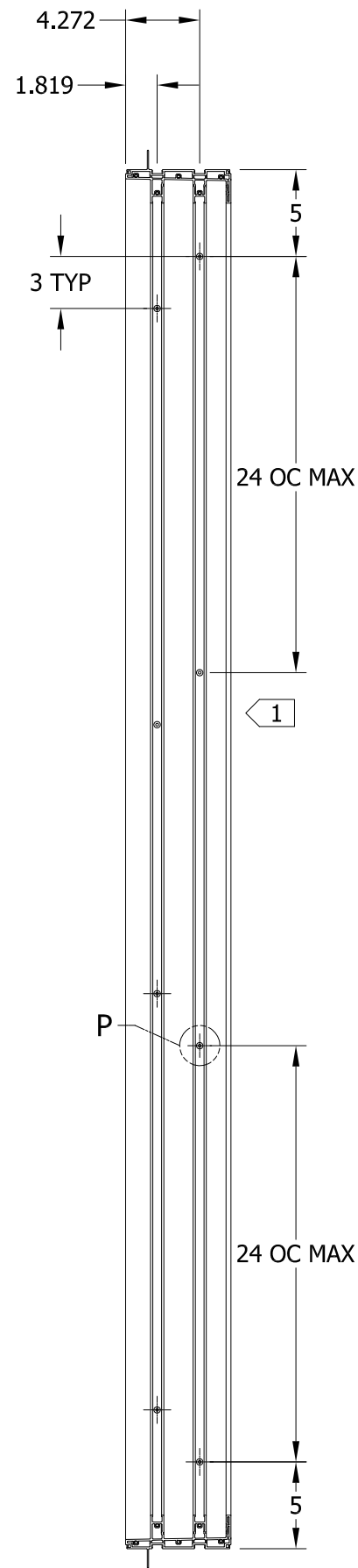
3737 LAKEPORT BLVD.
KLAMATH FALLS OR, 97601
PHONE: (800) 535-3936

Premium Vinyl Multi-Slide Patio Door
2-Panel 2-Track OX Stack

CAD DWG. No.:
PremVinylMTSLDR2 Cert

REV:
A

SHEET

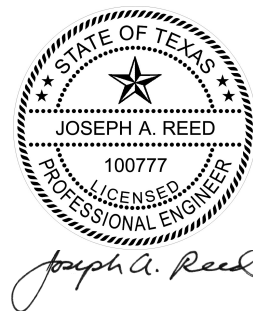


DETAIL P
SCALE 1 : 1

NOTES:


1. ANCHOR PATTERN LOCATED IN TRACKS 1 & 2 SHIFT AS DETAILED
1. HOLES TO BE OMITTED IF ON CENTER CALCATIONS FALL WITHIN 2" OF KEEPER LOCATION
2. ALL HOLES IN ALL POSITIONS TO BE CENTERED WITHIN TRACK TOWERS IN JAMB
3. THRU FRAME INSTALLATION

THIS DRAWING NOT INTENDED FOR
FASTENER SPACING REQUIREMENTS



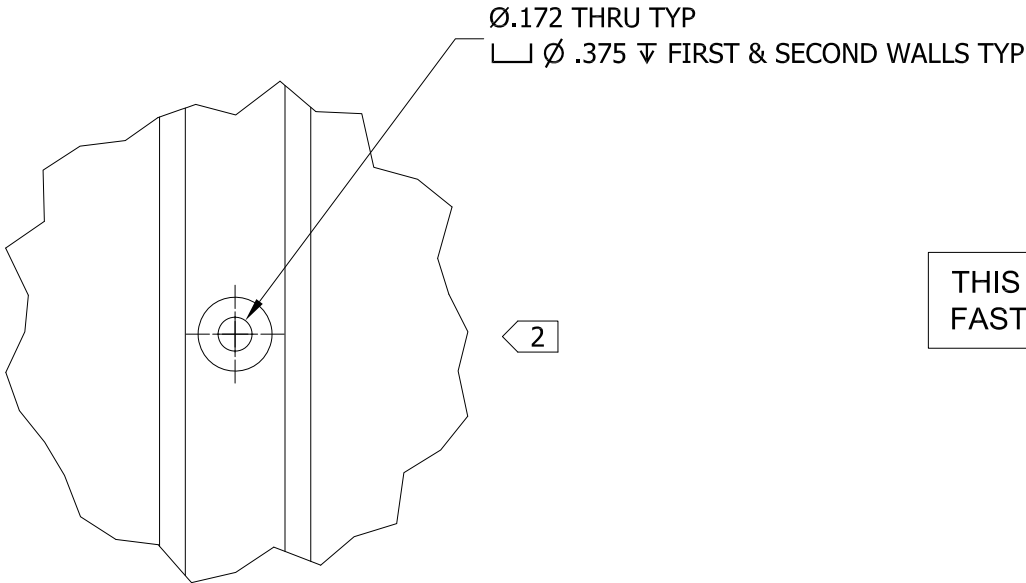
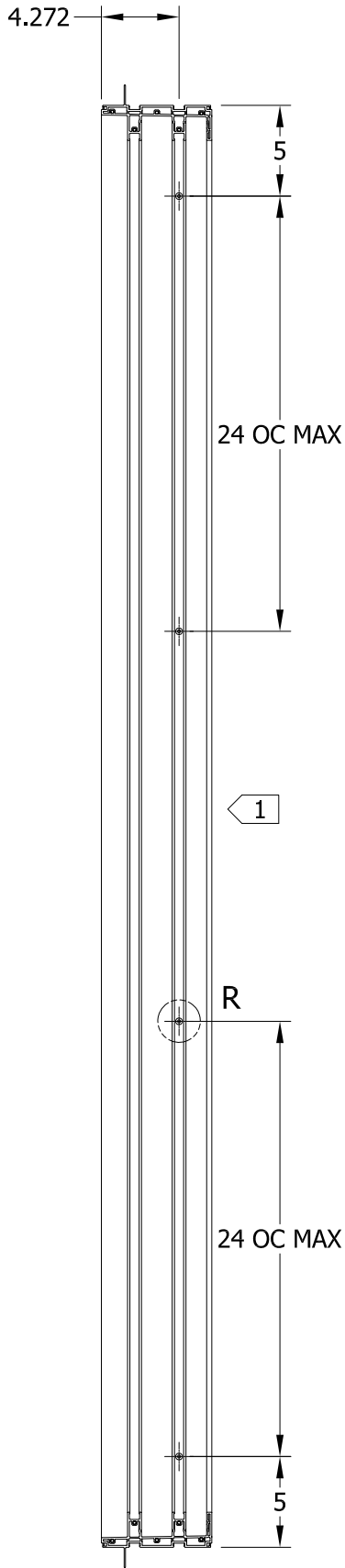
2021.05.24 07:31:01 -04'00'

JOSEPH A. REED, P.E.
Texas No. 100777
5 Leigh Drive
York, PA. 17406
(717) 846-1200

UNLESS SPECIFIED ALL DIMENSIONS IN INCHES DO NOT SCALE DRAWING - REPORT ANY ERRORS	PROJECT ENGINEER: N HERTZOG	DATE: 9/11/2015	 <div>3737 Lakeport Blvd. Klamath Falls, OR 97601 Phone: (541) 882-3451</div>	
	DRAWN BY: A BURWELL	SCALE: 1:10		
TOLERANCES (UNLESS SPECIFIED OTHERWISE) COMPONENT / PART TOLERANCES UNDER 10'-0" ± 1/32 .X ± .1 OVER 10'-0" ± 1/16 .XX ± .02 ANGULAR ± 1° .XXX ± .006	CHECKED BY: J JONES	TITLE: 2-TRACK FRAME MULTI-SLIDE PATIO DOOR JAMB ANCHOR HOLE DETAIL		
	APPROVED BY: J JONES			
UNIT ASSEMBLY TOLERANCES HEIGHT ± 1/16 WIDTH ± 1/16 MULLION ± 1/16 FRACTION ± 1/32	IDENTIFIER No.	MODEL No.: P012967-199.ipt	DRAWING No.: P012967	
		© 2015 JELD-WEN, inc. ALL RIGHTS RESERVED.NO DUPLICATION OR DISTRIBUTION PERMITTED.JELD-WEN, inc. CONFIDENTIAL AND PROPRIETARY.	REV: B	SHEET

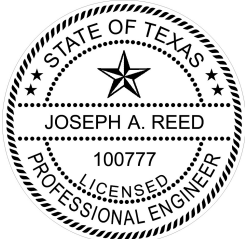
NOTES:

1.
- ANCHOR PATTERN LOCATED IN TRACK 1 SHIFT AS DETAILED
1.
- HOLES TO BE OMITTED IF ON CENTER CALCUATIONS FALL WITHIN 2" OF KEEPER LOCATION
2.
- ALL HOLES IN ALL POSITIONS TO BE CENTERED WITHIN TRACK TOWERS IN JAMB
3.
- NAIL FIN INSTALLATION



DETAIL R
SCALE 1 : 1

THIS DRAWING NOT INTENDED FOR
FASTENER SPACING REQUIREMENTS



Joseph A. Reed
2021.05.24 07:31:01 -04'00'

JOSEPH A. REED, P.E.
Texas No. 100777
5 Leigh Drive
York, PA. 17406
(717) 846-1200

UNLESS SPECIFIED ALL DIMENSIONS IN INCHES
DO NOT SCALE DRAWING - REPORT ANY ERRORS

TOLERANCES
(UNLESS SPECIFIED OTHERWISE)
COMPONENT / PART TOLERANCES

UNDER 10'-0" ± 1/32 .X ± .1
OVER 10'-0" ± 1/16 .XX ± .02
ANGULAR ± 1° .XXX ± .006

UNIT ASSEMBLY TOLERANCES
HEIGHT ± 1/16 WIDTH ± 1/16
MULLION ± 1/16 FRACTION ± 1/32

PROJECT ENGINEER:
N HERTZOG

DRAWN BY:
A BURWELL

CHECKED BY:
J JONES

APPROVED BY:
J JONES

IDENTIFIER No.

DATE:
9/11/2015

SCALE:
1 : 10

TITLE:

JELD-WEN
WINDOWS & DOORS

3737 Lakeport Blvd.
Klamath Falls, OR 97601
Phone: (541) 882-3451

**2-TRACK FRAME
MULTI-SLIDE PATIO DOOR
JAMB ANCHOR HOLES DETAIL**

MODEL No.:
P012967-198.ipt

DRAWING No.:
P012967

© 2015 JELD-WEN, inc. ALL RIGHTS RESERVED.NO DUPLICATION OR
DISTRIBUTION PERMITTED.JELD-WEN, inc. CONFIDENTIAL AND PROPRIETARY.

REV:
B

SHEET



THIS DRAWING NOT INTENDED FOR
FASTENER SPACING REQUIREMENTS


- 1 ALL HOLES IN ALL POSITIONS TO BE CENTERED WITHIN TRACK TOWERS AT HEAD OR SILL
- 2 TYP 1 ANCHOR PER PANEL LOCATED IN TRACK 1 TOWER AND ALIGNED WITH CENTER POINT OF EACH CLOSED POSITION PANEL
- 3 ANCHOR PATTERN LOCATED IN TRACK 1 & 2 TOWERS AT EACH INTERLOCK AREA
- 4 1 ANCHOR AT ENDS LOCATED IN TRACK 1 TOWER BOTH HEAD AND SILL
- 5 TYP 4 ANCHOR PATTERN LOCATED IN TRACK 1 & 2 TOWERS APPROXIMATE CENTER OF EACH CLOSED POSITION PANEL INTERLOCK AREA
- 6 CONFIGURATION FOR PG35/50 DOORS WITH THRU FRAME INSTALL

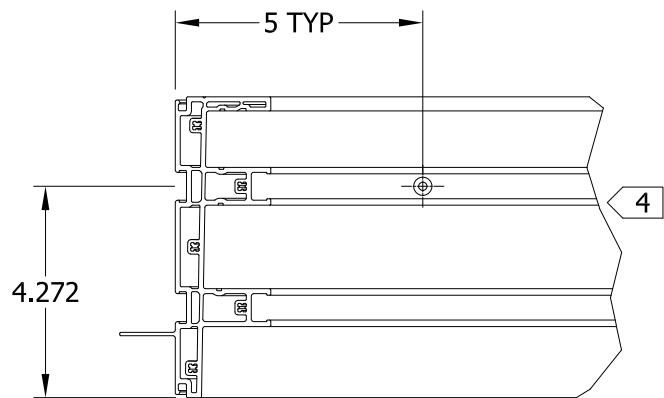


DETAIL V TYPICAL HOLE
SCALE 1 : 2

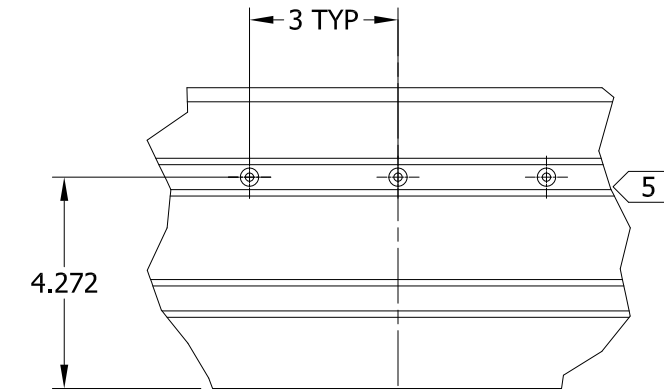


JOSEPH A. REED, P.E.
Texas No. 100777
5 Leigh Drive
York, PA. 17406
(717) 846-1200

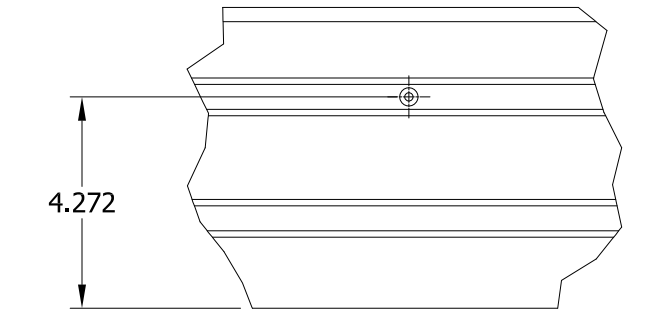
UNLESS SPECIFIED ALL DIMENSIONS IN INCHES DO NOT SCALE DRAWING - REPORT ANY ERRORS		PROJECT ENGINEER: N HERTZOG		DATE: 9/11/2015				3737 Lakeport Blvd. Klamath Falls, OR 97601 Phone: (541) 882-3451					
TOLERANCES (UNLESS SPECIFIED OTHERWISE) COMPONENT / PART TOLERANCES UNDER 10'-0" ± 1/32 .X ± .1 OVER 10'-0" ± 1/16 .XX ± .02 ANGULAR ± 1° .XXX ± .006 UNIT ASSEMBLY TOLERANCES HEIGHT ± 1/16 WIDTH ± 1/16 MULLION ± 1/16 FRACTION ± 1/32		DRAWN BY: A BURWELL		SCALE: AS SHOWN									
		CHECKED BY: J JONES		TITLE: 2-TRACK FRAME MULTI-SLIDE PATIO DOOR <div><div>6</div>SILL AND HEAD ANCHOR HOLES DETAIL</div>									
		APPROVED BY: J JONES											
		IDENTIFIER No.		MODEL No.: P012967-395.ipt		DRAWING No.:		P012967					
				© 2015 JELD-WEN, inc. ALL RIGHTS RESERVED.NO DUPLICATION OR DISTRIBUTION PERMITTED.JELD-WEN, inc. CONFIDENTIAL AND PROPRIETARY.						REV: B		SHEET	



EXT ↓ DETAIL W
SCALE 1 / 4



EXT ↓ PATTERN, SYM
DETAIL X
SCALE 1 / 4

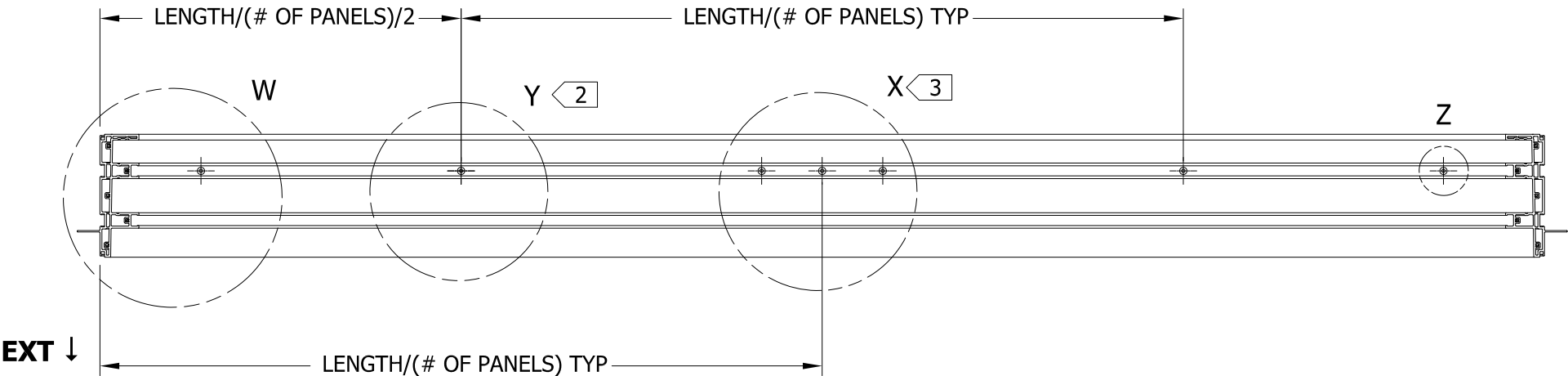


EXT ↓ DETAIL Y
SCALE 1 / 4

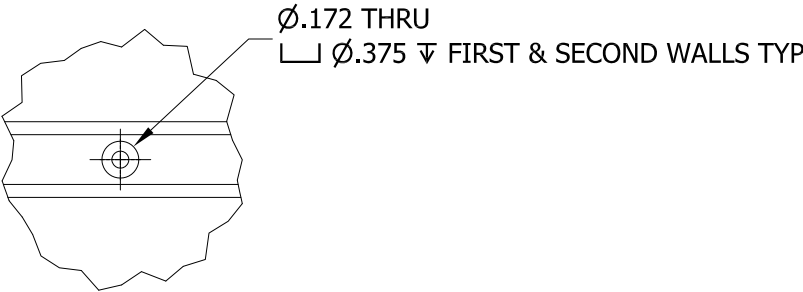
THIS DRAWING NOT INTENDED FOR
FASTENER SPACING REQUIREMENTS

NOTES:

- 1 ALL HOLES IN ALL POSITIONS TO BE CENTERED WITHIN TRACK TOWERS AT HEAD OR SILL
- 2 TYP 1 ANCHOR PER PANEL LOCATED IN TRACK 1 TOWER AND ALIGNED WITH CENTER POINT OF EACH CLOSED POSITION PANEL
- 3 ANCHOR PATTERN LOCATED IN TRACK 1 TOWER AT EACH INTERLOCK AREA
- 4 1 ANCHOR AT ENDS LOCATED IN TRACK 1 TOWER BOTH HEAD AND SILL
- 5 TYP 3 ANCHOR PATTERN LOCATED IN TRACK 1 TOWER APPROXIMATE CENTER OF EACH CLOSED POSITION PANEL INTERLOCK AREA
- 6 CONFIGURATION FOR PG35/50 DOORS WITH NAIL FIN INSTALL



EXT ↓



DETAIL Z TYPICAL HOLE
SCALE 1 / 2



Joseph A. Reed
2021.05.24 07:31:01 -04'00'

JOSEPH A. REED, P.E.
Texas No. 100777
5 Leigh Drive
York, PA. 17406
(717) 846-1200

UNLESS SPECIFIED ALL DIMENSIONS IN INCHES DO NOT SCALE DRAWING - REPORT ANY ERRORS	
TOLERANCES (UNLESS SPECIFIED OTHERWISE) COMPONENT / PART TOLERANCES	
UNDER 10'-0" ± 1/32	.X ± .1
OVER 10'-0" ± 1/16	.XX ± .02
ANGULAR ± 1°	.XXX ± .006
UNIT ASSEMBLY TOLERANCES	
HEIGHT ± 1/16	WIDTH ± 1/16
MULLION ± 1/16	FRACTION ± 1/32

PROJECT ENGINEER: N HERTZOG
DRAWN BY: A BURWELL
CHECKED BY: J JONES
APPROVED BY: J JONES
IDENTIFIER No.

DATE: 9/11/2015
SCALE: AS SHOWN

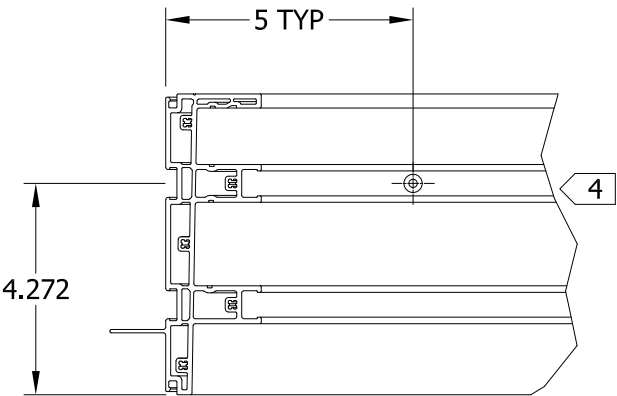
JELD-WEN
WINDOWS & DOORS

3737 Lakeport Blvd.
Klamath Falls, OR 97601
Phone: (541) 882-3451

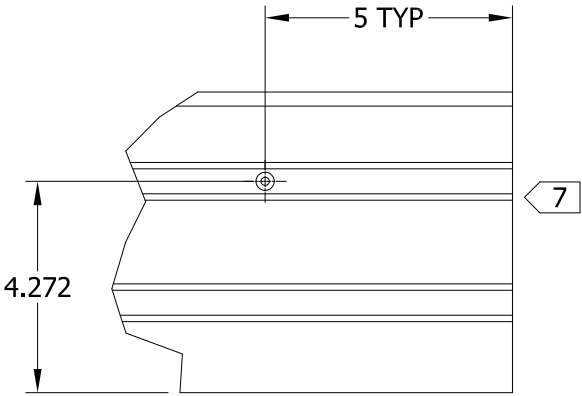
TITLE: 2-TRACK FRAME MULTI-SLIDE PATIO DOOR SILL AND HEAD ANCHOR HOLES DETAIL	
MODEL No.: P012967-394.ipt	DRAWING No.: P012967
© 2015 JELD-WEN, inc. ALL RIGHTS RESERVED.NO DUPLICATION OR DISTRIBUTION PERMITTED.JELD-WEN, inc. CONFIDENTIAL AND PROPRIETARY.	
REV: B	SHEET

NOTES:

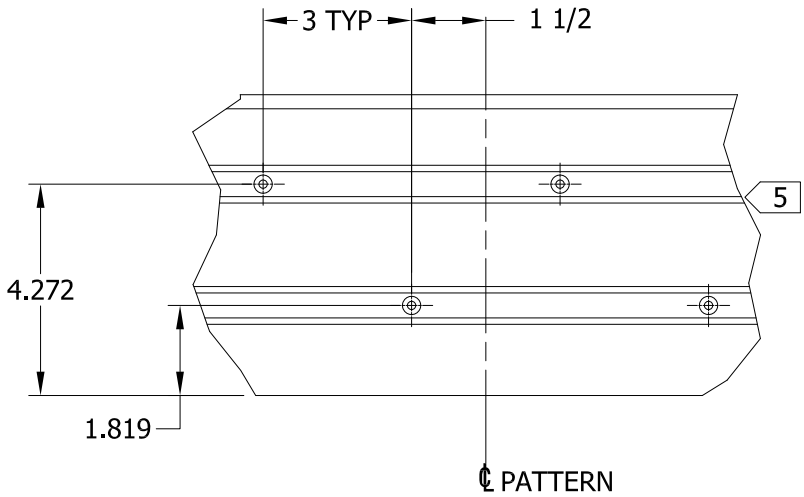
- 1 ALL HOLES IN ALL POSITIONS TO BE CENTERED WITHIN TRACK TOWERS AT HEAD OR SILL
- 2 TYP 1 ANCHOR PER PANEL LOCATED IN TRACK 1 TOWER AND ALIGNED WITH CENTER POINT OF EACH CLOSED POSITION PANEL
- 3 ANCHOR PATTERN LOCATED IN TRACK 1 & 2 TOWERS AT EACH INTERLOCK AREA
- 4 1 ANCHOR AT ENDS LOCATED IN TRACK 1 TOWER BOTH HEAD AND SILL
- 5 TYP 4 ANCHOR PATTERN LOCATED IN TRACK 1 & 2 TOWERS APPROXIMATE CENTER OF EACH CLOSED POSITION PANEL INTERLOCK AREA
- 6 CONFIGURATION FOR PG35/50 POCKET DOORS WITH THRU FRAME INSTALL
- 7 POCKET HEAD AND SILL END; MIRROR FOR 2-POCKET CONFIGURATIONS



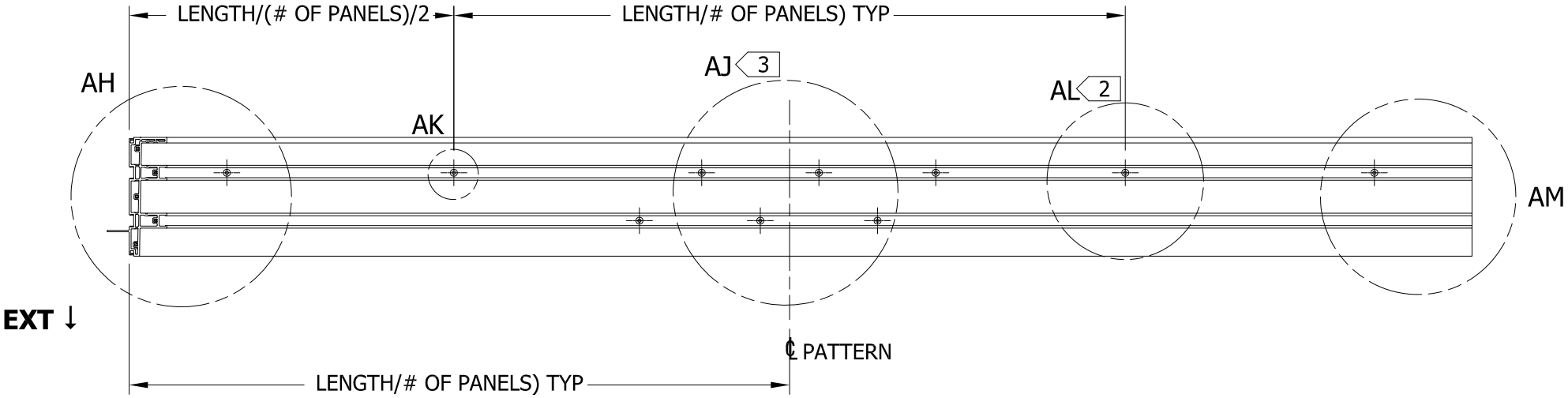
EXT ↓ DETAIL AH
SCALE 1 / 4



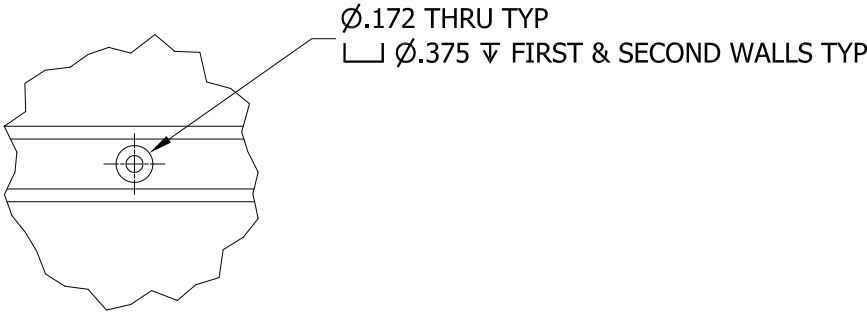
EXT ↓ DETAIL AM
SCALE 1 / 4



EXT ↓ DETAIL AJ
SCALE 1 / 4

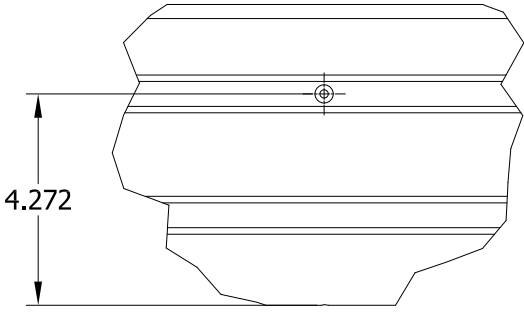


EXT ↓



DETAIL AK TYPICAL HOLE
SCALE 1 / 2

THIS DRAWING NOT INTENDED FOR
FASTENER SPACING REQUIREMENTS



EXT ↓ DETAIL AL
SCALE 1 / 4



Joseph A. Reed
2021.05.24 07:31:01 -04'00'

JOSEPH A. REED, P.E.
Texas No. 100777
5 Leigh Drive
York, PA. 17406
(717) 846-1200

UNLESS SPECIFIED ALL DIMENSIONS IN INCHES DO NOT SCALE DRAWING - REPORT ANY ERRORS	
TOLERANCES (UNLESS SPECIFIED OTHERWISE) COMPONENT / PART TOLERANCES	
UNDER 10'-0" ± 1/32	.X ± .1
OVER 10'-0" ± 1/16	.XX ± .02
ANGULAR ± 1°	.XXX ± .006
UNIT ASSEMBLY TOLERANCES	
HEIGHT ± 1/16	WIDTH ± 1/16
MULLION ± 1/16	FRACTION ± 1/32

PROJECT ENGINEER: N HERTZOG
DRAWN BY: A BURWELL
CHECKED BY: J JONES
APPROVED BY: J JONES
IDENTIFIER No.

DATE: 9/11/2015
SCALE: AS SHOWN
TITLE: 2-TRACK FRAME MULTI-SLIDE PATIO DOOR SILL AND HEAD ANCHOR HOLES DETAIL
MODEL No.: P012967-314.ipt

JELD-WEN
WINDOWS & DOORS

3737 Lakeport Blvd.
Klamath Falls, OR 97601
Phone: (541) 882-3451

DRAWING No.: P012967	REV: B	SHEET
--------------------------------	------------------	-------