

NAN YA 6068 DP45 SLIDING GLASS DOOR
EXTERIOR VIEW

DESIGN PRESSURE RATING	IMPACT RATING
±45PSF	NONE

TABLE OF CONTENTS	
SHEET NO.	DESCRIPTION
1	ELEVATION, ANCHORING LAYOUT AND NOTES
2	INSTALLATION DETAILS
3	COMPONENTS AND HARDWARE

REVISIONS			
REV	DESCRIPTION	DATE	APPROVED
A	UPDATED PER NEW CODES	09/29/2021	R.L.

- NOTES:
1. THE PRODUCT SHOWN HEREIN IS DESIGNED AND MANUFACTURED TO COMPLY WITH REQUIREMENTS OF THE 2018 IBC AND 2018 IRC.
 2. WOOD FRAMING AND MASONRY OPENING TO BE DESIGNED AND ANCHORED TO PROPERLY TRANSFER ALL LOADS TO STRUCTURE. FRAMING AND MASONRY OPENING IS THE RESPONSIBILITY OF THE ARCHITECT OR ENGINEER OF RECORD.
 3. 1X BUCK OVER MASONRY/CONCRETE IS OPTIONAL. WHERE 1X BUCK IS NOT USED DISSIMILAR MATERIALS MUST BE SEPARATED WITH APPROVED COATING OR MEMBRANE. SELECTION OF COATING OR MEMBRANE IS THE RESPONSIBILITY OF THE ARCHITECT OR ENGINEER OF RECORD.
 4. ALLOWABLE STRESS INCREASE OF 1/3 WAS NOT USED IN THE DESIGN OF THE PRODUCT SHOWN HEREIN. WIND LOAD DURATION FACTOR Cd=1.6 WAS USED FOR WOOD ANCHOR CALCULATIONS.
 5. FRAME JAMB AND HEAD MATERIAL: PVC COMPOSITE FOAM WITH AN EXTRUDED PVC SKIN .031" THICK.
 6. UNITS MUST BE GLAZED PER ASTM E1300.
 7. APPROVED IMPACT PROTECTIVE SYSTEM IS REQUIRED FOR THIS PRODUCT IN WIND BORNE DEBRIS REGIONS.
 8. SHIM AS REQUIRED AT EACH INSTALLATION ANCHOR WITH LOAD BEARING SHIM. SHIM WHERE SPACE OF 1/16" OR GREATER OCCURS. MAXIMUM ALLOWABLE SHIM STACK TO BE 1/4".
 9. FOR ANCHORING HEAD AND JAMBS INTO 2X BUCK OR WOOD FRAMING USE #10 WOOD SCREW OF SUFFICIENT LENGTH TO ACHIEVE A 1 3/8" MINIMUM EMBEDMENT INTO SUBSTRATE. LOCATE ANCHORS AS SHOWN IN ANCHORING LAYOUT AND INSTALLATION DETAILS.
 10. ALL FASTENERS TO BE CORROSION RESISTANT.
 11. INSTALLATION ANCHORS SHALL BE INSTALLED IN ACCORDANCE WITH ANCHOR MANUFACTURER'S INSTALLATION INSTRUCTIONS AND ANCHORS SHALL NOT BE USED IN SUBSTRATES WITH STRENGTHS LESS THAN THE MINIMUM STRENGTH SPECIFIED BELOW:
A. WOOD – MINIMUM SPECIFIC GRAVITY OF G=0.42
 12. FRAME SILL MATERIAL: CO-EXTRUDED PVC FOAM 1 1/32" THICK.
 13. DOOR PANEL MATERIAL: PVC COMPOSITE FOAM WITH AN EXTRUDED PVC SKIN .031" THICK.
 14. APPROVED CONFIGURATIONS: XO, OX.

NAN YA PLASTICS CORP. USA
8989 NORTH LOOP EAST
HOUSTON, TX 77029

NAN YA 6068 DP 45
GLIDING PATIO DOOR
ELEVATION, ANCHORING LAYOUT AND NOTES

DRAWN:
N.G.

DWG NO.
08-02196

REV
A

SCALE
NTS

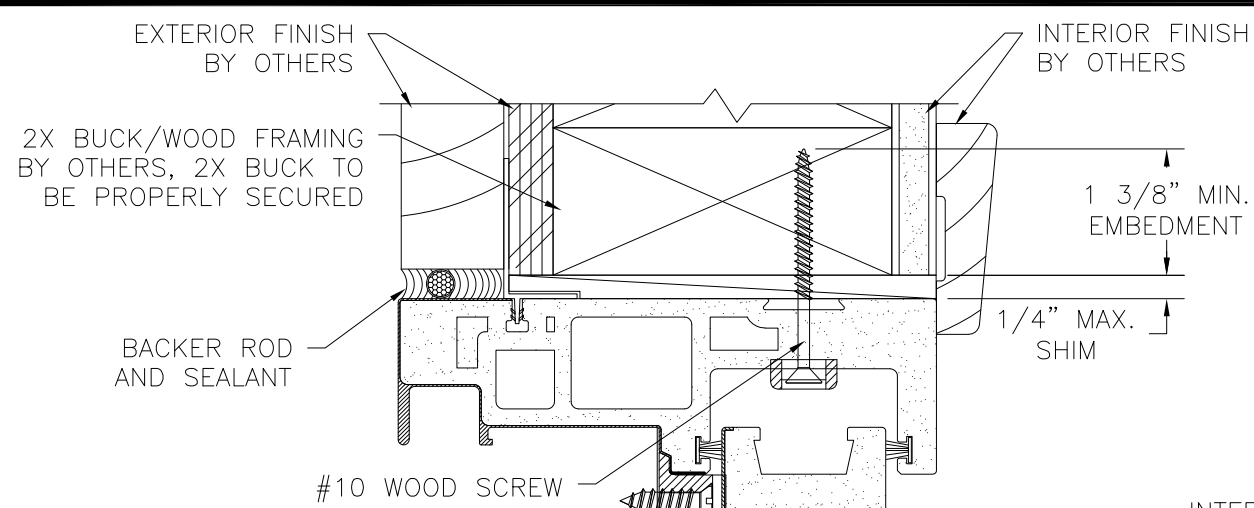
DATE
08/01/13

SHEET
1 OF 3

L. ROBERTO LOMAS P.E.
1432 WOODFORD RD LEWISVILLE, NC 27023
434-688-0609 rllomas@lrlomaspe.com



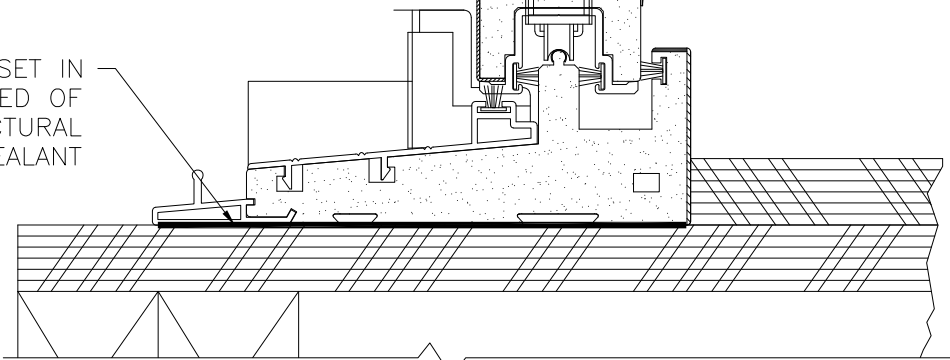
Luis R. Lomas P.E.
TX No.: 101889



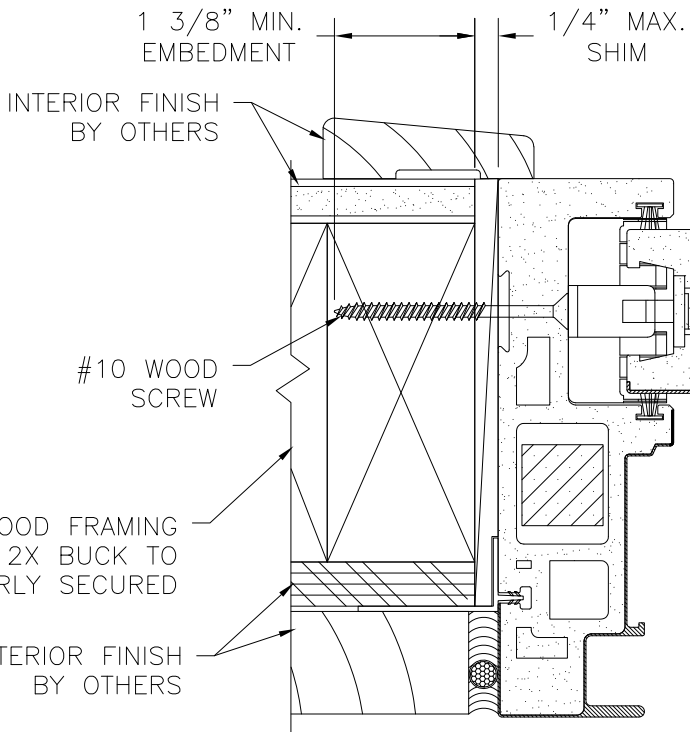
EXTERIOR

INTERIOR

SILL TO BE SET IN
FULL LENGTH BED OF
APPROVED STRUCTURAL
SEALANT



VERTICAL CROSS SECTION
2X BUCK/WOOD FRAMING



INTERIOR

EXTERIOR

HORIZONTAL CROSS SECTION
2X BUCK/WOOD FRAMING

REVISIONS			
REV	DESCRIPTION	DATE	APPROVED
A	UPDATED PER NEW CODES	09/29/2021	R.L.

NAN YA PLASTICS CORP. USA

8989 NORTH LOOP EAST
HOUSTON, TX 77029

NAN YA 6068 DP 45
GLIDING PATIO DOOR
INSTALLATION DETAILS

DRAWN:
N.G.

DWG NO.
08-02196

REV
A

SCALE NTS

DATE 08/01/13

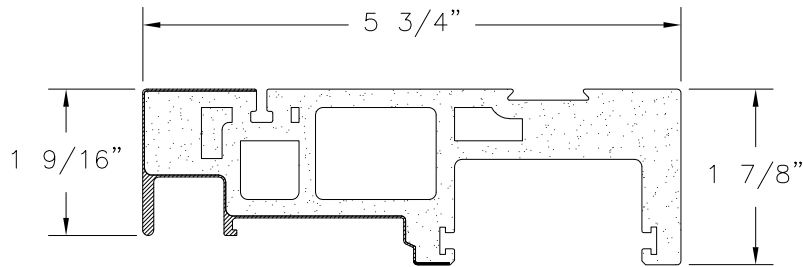
SHEET 2 OF 3

L. ROBERTO LOMAS P.E.
1432 WOODFORD RD LEWISVILLE, NC 27023
434-688-0609 rllomas@lrlomaspe.com

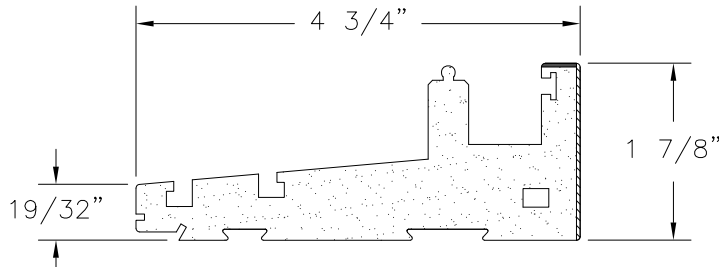
SIGNED: 09/29/2021



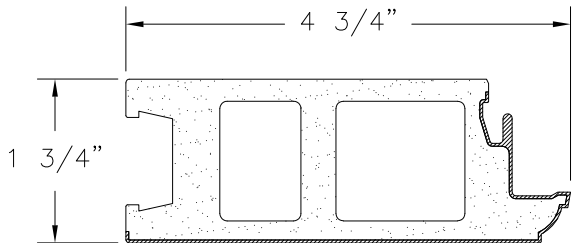
Luis R. Lomas P.E.
TX No.: 101889



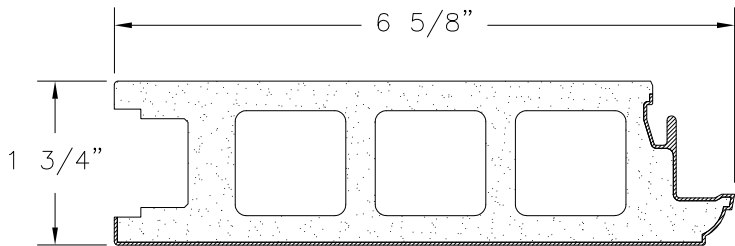
5 3/4" FRAME HEAD AND JAMB
CO-EXTRUDED PVC FOAM .75" THICK



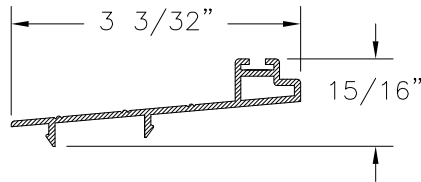
4 3/4" GLIDING SILL
CO-EXTRUDED PVC FOAM
1.032" THICK



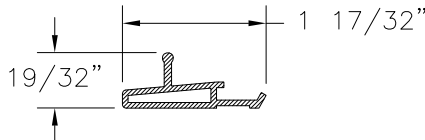
4 3/4" STILE AND TOP RAIL
PVC COMPOSITE FOAM WITH
.031" THICK EXTRUDED PVC SKIN



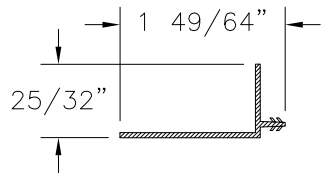
6 5/8" BOTTOM RAIL
PVC COMPOSITE FOAM WITH
.031" THICK EXTRUDED PVC SKIN



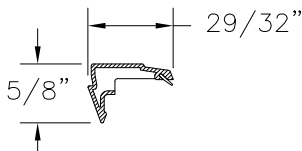
THRESHOLD
EXTRUDED ALUMINUM 6063-T6 .059" THICK



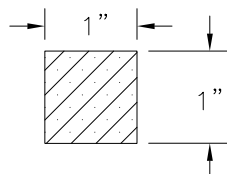
SCREEN RAIL
EXTRUDED ALUMINUM 6063-T6 .059" THICK



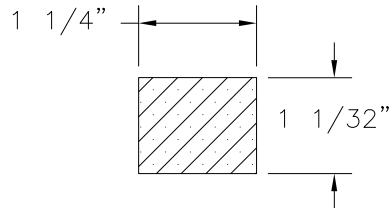
FRAME FIN
EXTRUDED RIGID PVC .051" THICK



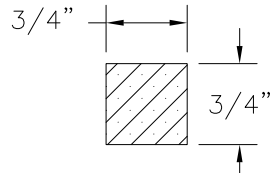
1" GLAZING BEAD
EXTRUDED RIGID PVC .039" THICK



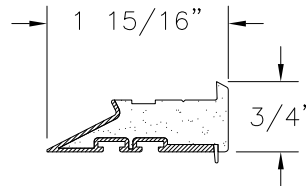
**PANEL BOTTOM RAIL
REINFORCEMENT**
PINE



**PANEL STILE
REINFORCEMENT**
PINE



**JAMB
REINFORCEMENT**
PINE



MEETING STILE INTERLOCK
CO-EXTRUDED PVC FOAM .75" THICK

REVISIONS			
REV	DESCRIPTION	DATE	APPROVED
A	UPDATED PER NEW CODES	09/29/2021	R.L.

HARDWARE SCHEDULE	
A.	ADJUSTABLE ROLLER (2) PER ACTIVE PANEL
B.	FLUSH BOLT WITH KEEPER (1) TOP OF ACTIVE PANEL
C.	SINGLE LOCKING SYSTEM WITH KEEPER (1) PER ACTIVE PANEL
D.	GLIDING HANDLE SET (1) PER ACTIVE PANEL

NAN YA PLASTICS CORP. USA 8989 NORTH LOOP EAST HOUSTON, TX 77029		
NAN YA 6068 DP 45 GLIDING PATIO DOOR COMPONENTS AND HARDWARE		
DRAWN: N.G.	DWG NO. 08-02196	REV A
SCALE NTS	DATE 08/01/13	SHEET 3 OF 3
L. ROBERTO LOMAS P.E. 1432 WOODFORD RD LEWISVILLE, NC 27023 434-688-0609 rllomas@lrlomaspe.com		



Luis R. Lomas P.E.
TX No.: 101889