

# THERMA TRU®

118 INDUSTRIAL DR., EDGERTON, OH 43517  
TEL. (419)298-1740

## "SMOOTH STAR", "FIBER CLASSIC", "CLASSIC CRAFT" & "CLASSIC CRAFT RUSTIC" GLAZED FIBERGLASS DOUBLE DOOR IN SWING / OUT SWING "IMPACT"

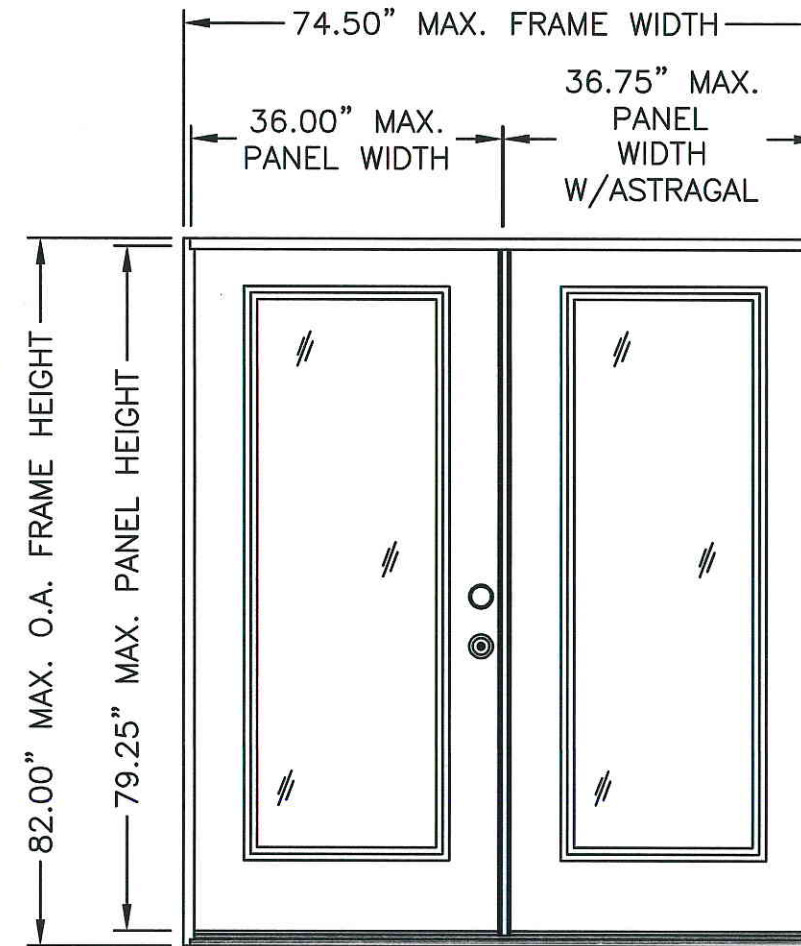
### EVALUATED FOR USE IN THE STATE OF TEXAS

THE THERMA-TRU FIBERGLASS DOOR DESCRIBED HEREIN COMPLIES WITH THE INTERNATIONAL RESIDENTIAL CODE (IRC), SECTIONS R301 & R613 AND THE INTERNATIONAL BUILDING CODE (IBC), SECTIONS 1714.5 1405.12, 1609, 2403 AND 2404 (INCLUDING TEXAS REVISIONS) SUBJECT TO THE FOLLOWING CONDITIONS:

1. Anchors shall be as listed and spaced as shown in the details. Anchor embedment to base material shall be beyond wall dressing or stucco.
2. When used in wind borne debris regions (SEAWARD and INLAND I ZONES), the Product complies with Sections R301.2.1.2 and 1609.1.4 as an impact resistant product and does not require the use of an approved impact resistant covering. This product does not meet the requirements for enhanced protection of essential facilities as defined in ASTM E1996.
3. Allowable design pressure requirements must be equal to or less than the design pressure rating shown in the design pressure chart, sheet 1 of this drawing.
4. Conditions not covered by this drawing are subject to further engineering analysis.

### SUPPORTING DOCUMENTS & EVIDENCE

1. Testing per AAMA 101/I.S.2/A440-05, ASTM E1886-02 and ASTM E1996-02 as performed by Testing Evaluation Laboratories Inc. and report number TEL 06-0718-1, dated July 17, 2006 and signed by Wendell W. Haney, P.E.
2. Anchor analysis for loading conditions prepared, signed and sealed by Wendell W. Haney, P.E. Glass load resistance report ASTM E1300-00, prepared by Wendell W. Haney, P.E..
3. Certificate of Participation issued by the National Accreditation and Management Institute, Inc., certifying that Therma Tru Corporation is manufacturing products within a Quality Assurance program.



X X  
"SMOOTH STAR", "FIBER CLASSIC"  
"CLASSIC CRAFT" & "CLASSIC CRAFT RUSTIC"

SWING	OVERALL FRAME DIMENSION	OVERALL D.L.O. DIMENSION	DESIGN PRESSURE (PSF)	
			POSITIVE	NEGATIVE
IN SWING	74.50" X 82.00"	21.00" X 63.25"	+47.0	-53.0
OUT SWING	74.50" X 80.62"	21.00" X 63.25"	+50.0	-50.0

TABLE OF CONTENTS	
SHEET #	DESCRIPTION
1	TYPICAL ELEVATION, DESIGN PRESSURES & GENERAL NOTES
2	DOOR PANEL CROSS SECTIONS "SMOOTH STAR"
3	DOOR PANEL CROSS SECTIONS "CLASSIC CRAFT" & "RUSTIC"
4	DOOR PANEL CROSS SECTIONS "FIBER CLASSIC"
5	HORIZONTAL CROSS SECTIONS
6	VERTICAL CROSS SECTIONS
7	FRAME ANCHORING
8	BILL OF MATERIALS & COMPONENTS

Documents Prepared By:

**RW** BUILDING CONSULTANTS, INC.  
P.O. Box 230 Valrico FL 33595  
Phone No.: 813.659.9197  
Florida Board of Professional Engineers  
Certificate of Authorization No. 9813  
Wendell W. Haney, P.E. 7.23.08  
Wendell W. Haney, P.E. No. 54158

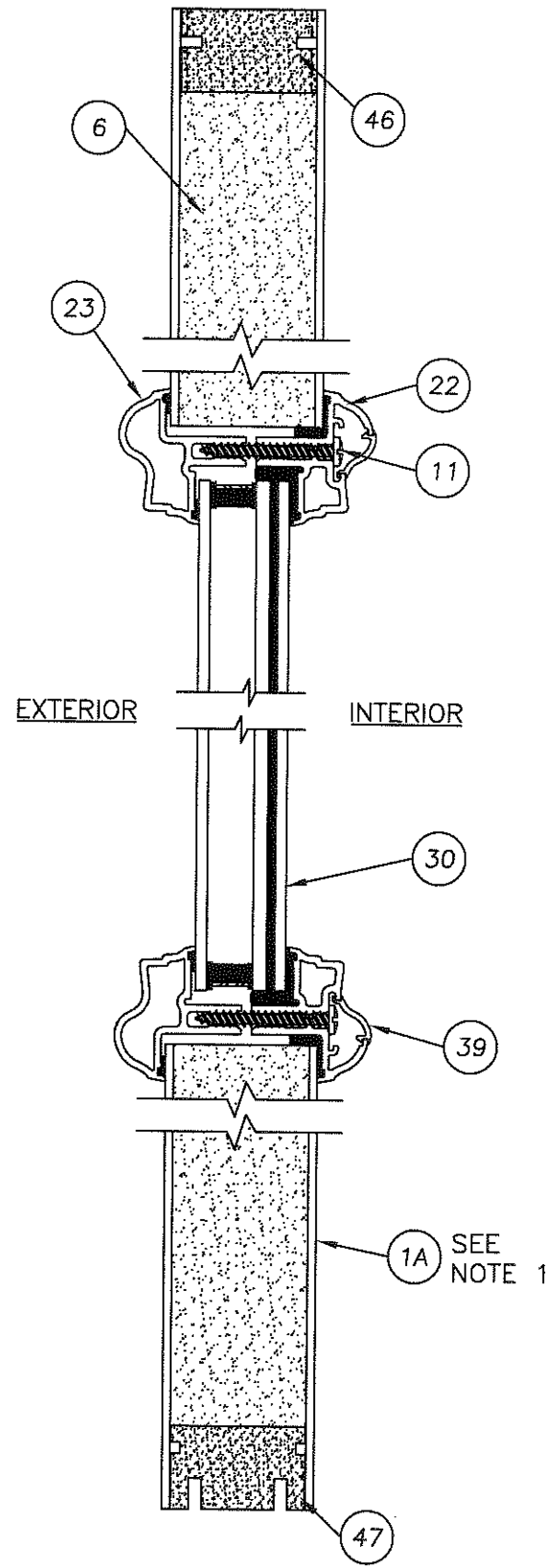
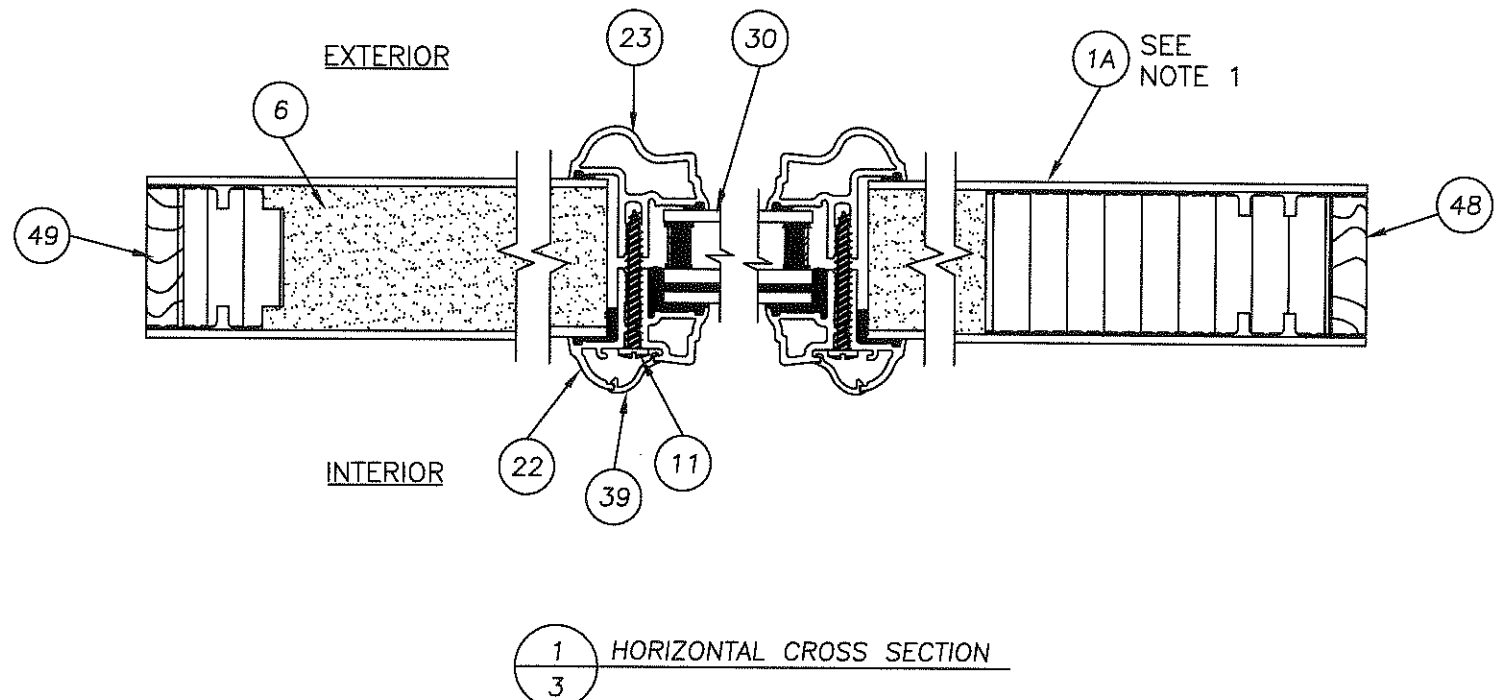
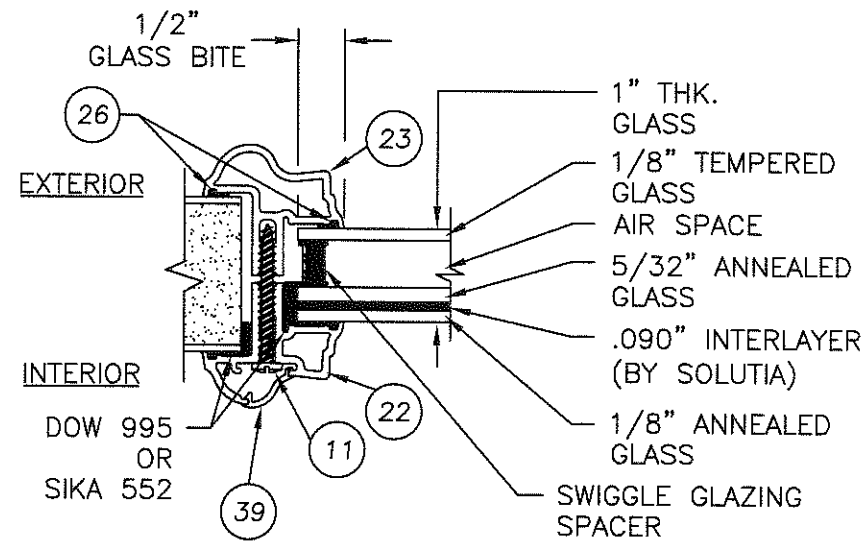
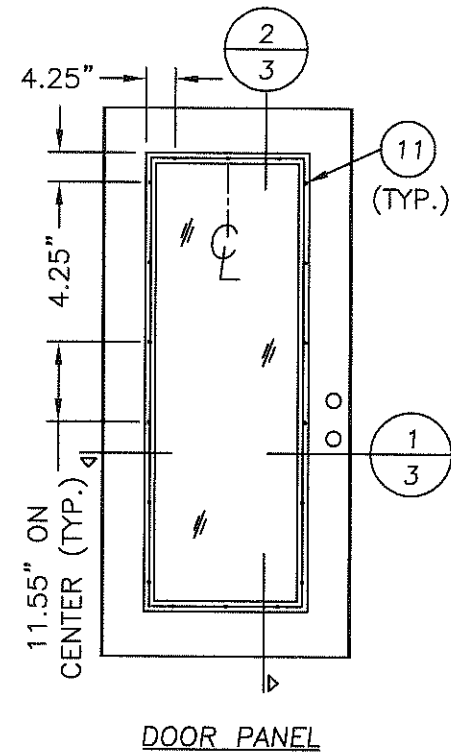
PRODUCT: THERMA-TRU  
GLAZED DOUBLE FIBERGLASS  
DOOR IN/OUTSWING "IMPACT"  
PART OR ASSEMBLY:  
TYPICAL ELEVATION, DESIGN  
PRESSURES & GENERAL NOTES

NO.	DATE	REV. LOCK & DEADBOLT MODEL	AL	BY	REVISIONS
1	7/9/08				

DATE: 12/15/06  
SCALE: N.T.S.  
DWG. BY: AEM  
CHK. BY: WWH  
DRAWING NO.: TX-3183  
SHEET 1 OF 8



K:\VA - Projects\Project Folders\Proj 1101 - 1200\pr1105\ID - RWBC Drawings\TX-3183\TX-3183 REV1\TX-3183-3.DWG, Model



NOTE:  
 1. "RUSTIC" PANEL UTILIZES MAHOGANY GRAINING PATTERN,  
 "CLASSIC CRAFT" PANEL UTILIZES OAK GRAINING PATTERN.

Documents Prepared By:  
**RW** BUILDING CONSULTANTS, INC.  
 P.O. Box 230 Valrico FL, 33595  
 Phone No.: 813.659.9197  
 Florida Board of Professional Engineers  
 Certificate Of Authorization No. 9813  
 Wendell W. Hays E.E. No. 54158

PRODUCT: THERMA-TRU GLAZED DOUBLE FIBERGLASS DOOR IN/OUTSWING "IMPACT"  
 PART OR ASSEMBLY: "CLASSIC CRAFT" & "RUSTIC" DOOR PANEL CROSS SECTIONS

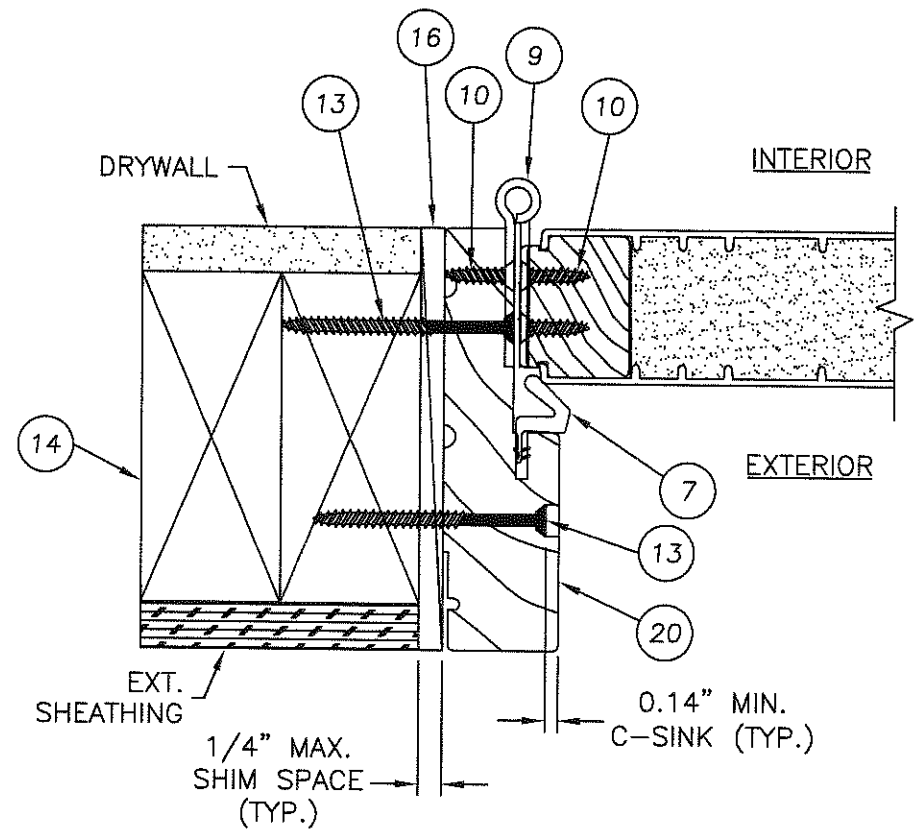
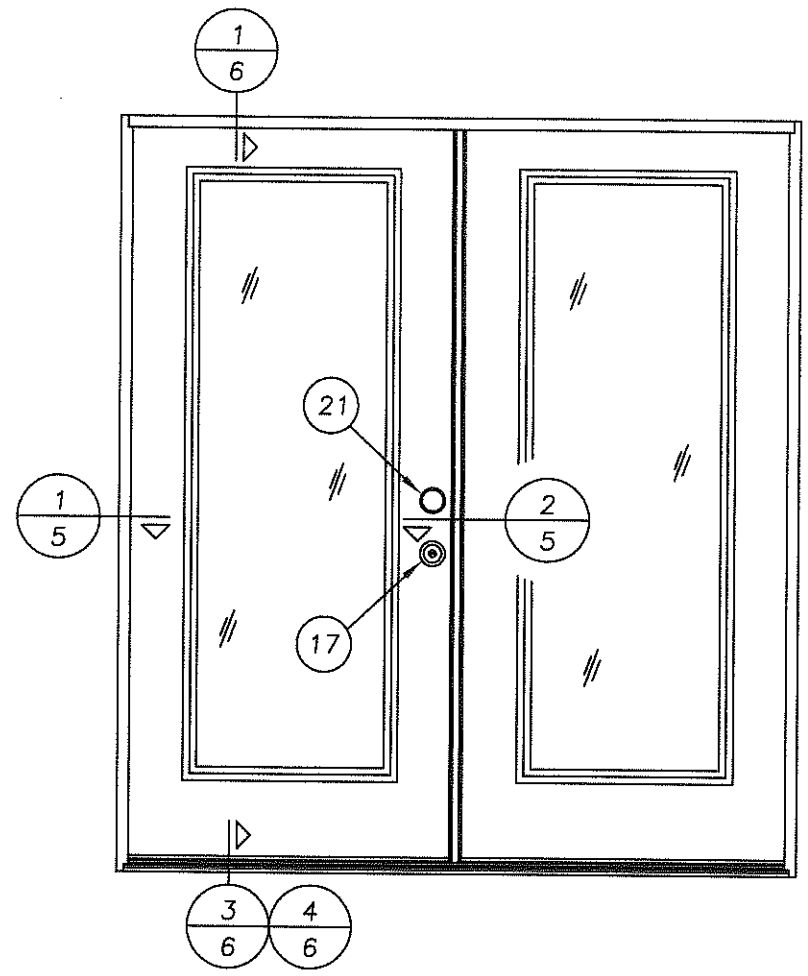
NO	DATE	REV. LOCK & DEADBOLT MODEL	AL	BY
1	7/9/08			

REVISIONS

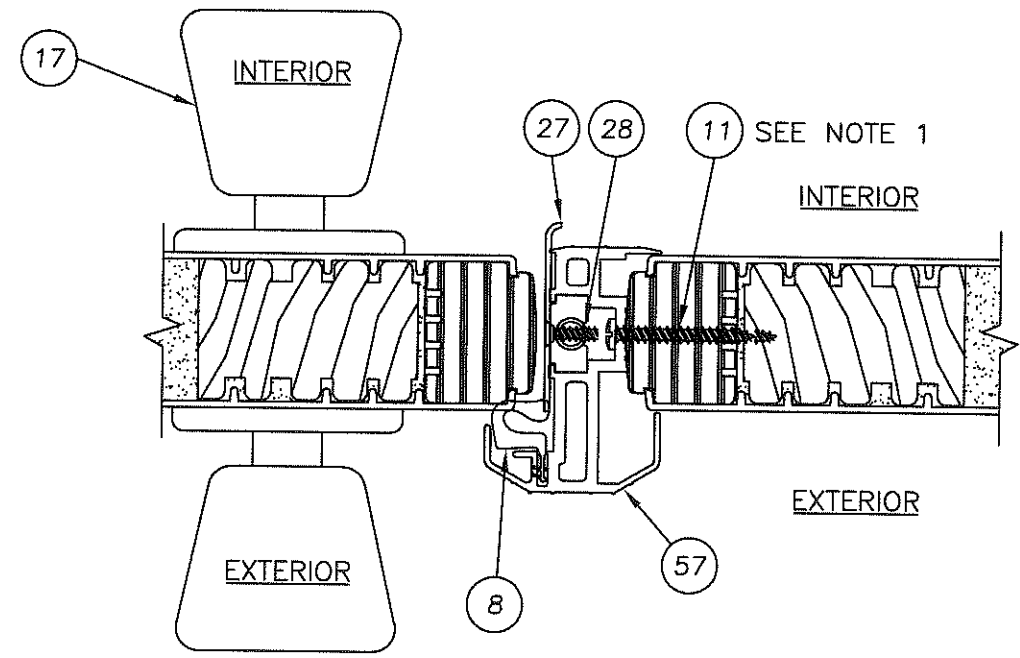
DATE: 12/15/06  
 SCALE: N.T.S.  
 DWG. BY: AEM  
 CHK. BY: WWH  
 DRAWING NO.: TX-3183  
 SHEET 3 OF 8

© 2008 R.W. BUILDING CONSULTANTS INC.





1 HORIZONTAL CROSS SECTION  
 5 @ SIDELITE JAMB  
 ("SMOOTH STAR SERIES" SHOWN)



2 HORIZONTAL CROSS SECTION  
 5 LATCH JAMB @ SIDELITE JAMB  
 ("SMOOTH STAR SERIES" SHOWN)

**NOTE**  
 1. (11) OF ITEM #11 ASTRAGAL RETAINING SCREW LOCATED @ 3/4", 2", 3-1/4", 4-1/2", 18-7/8", 41-7/8", 60-7/8", 74-3/4", 76", 77-1/4" & 78-1/2" FROM TOP OF ASTRAGAL.

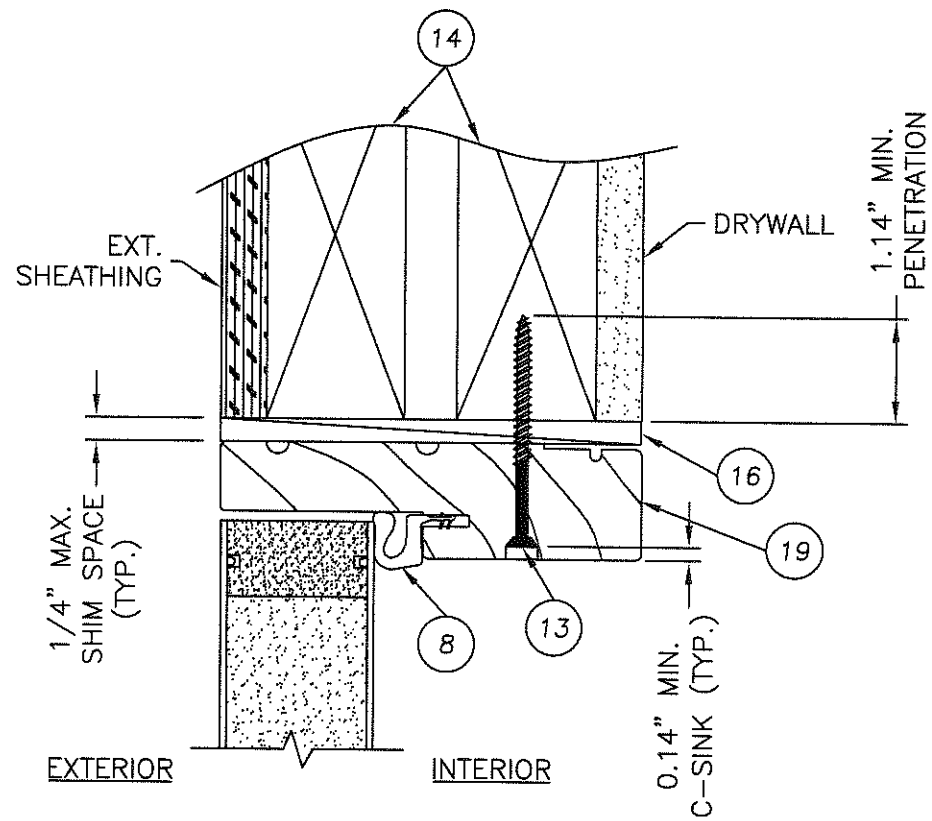
Documents Prepared By:

**RW** BUILDING CONSULTANTS, INC.  
 P.O. Box 230 Valrico FL, 33595  
 Phone No.: 813.659.9197  
 Florida Board of Professional Engineers  
 Certificate of Authorization No. 9813  
*Wendell W. Hays* 7-23-08  
 Wendell W. Hays, P.E. No. 54158

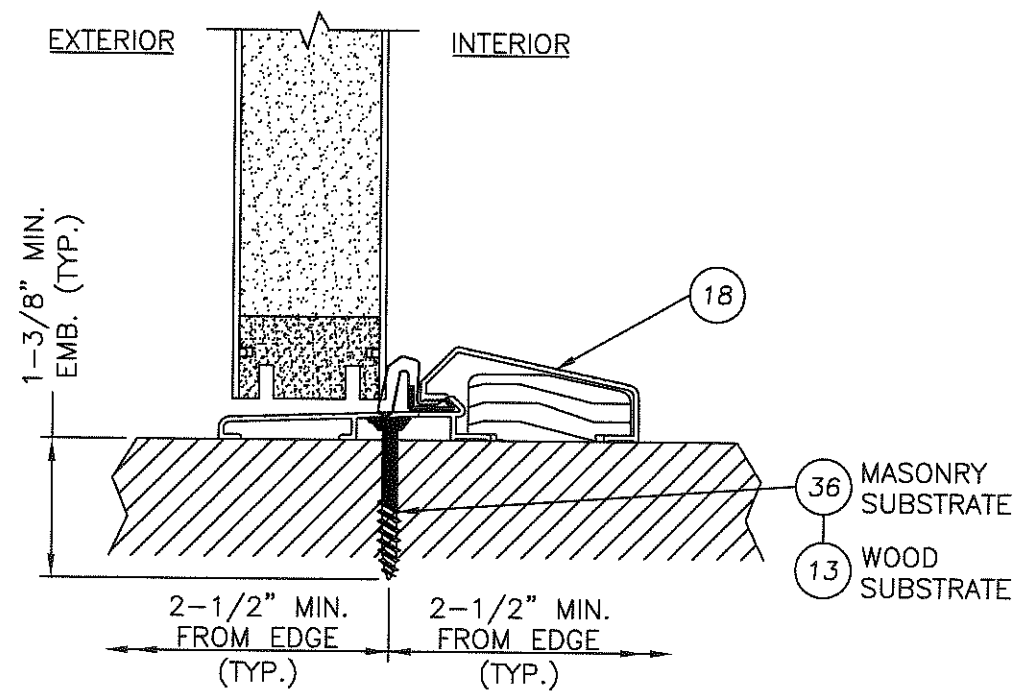
PRODUCT: THERMA-TRU  
 GLAZED DOUBLE FIBERGLASS  
 DOOR IN/OUTSWING "IMPACT"  
 PART OR ASSEMBLY:  
 HORIZONTAL  
 CROSS SECTIONS

REVISIONS	
NO.	DATE
1	7/9/08
	REV. LOCK & DEADBOLT MODEL
	AL BY

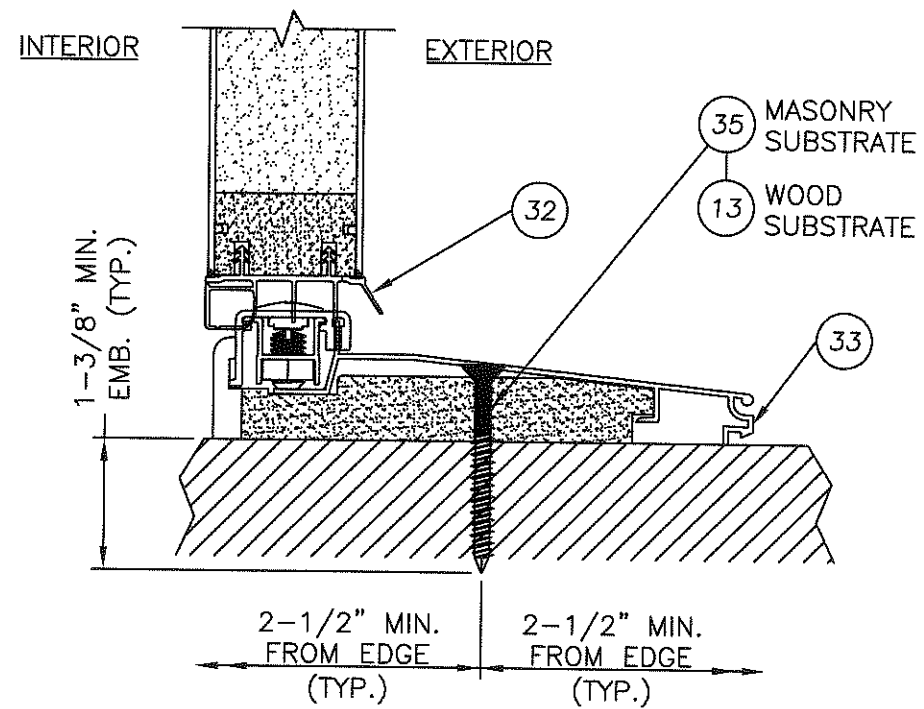
DATE: 12/15/06  
 SCALE: N.T.S.  
 DWG. BY: AEM  
 CHK. BY: WWH  
 DRAWING NO.: TX-3183  
 SHEET 5 OF 8



1 VERTICAL CROSS SECTION  
6 ("SMOOTH STAR SERIES" SHOWN)



3 VERTICAL CROSS SECTION  
6 OUTSWING CONFIGURATION  
("SMOOTH STAR SERIES" SHOWN)



4 VERTICAL CROSS SECTION  
6 INSWING CONFIGURATION  
("SMOOTH STAR SERIES" SHOWN)

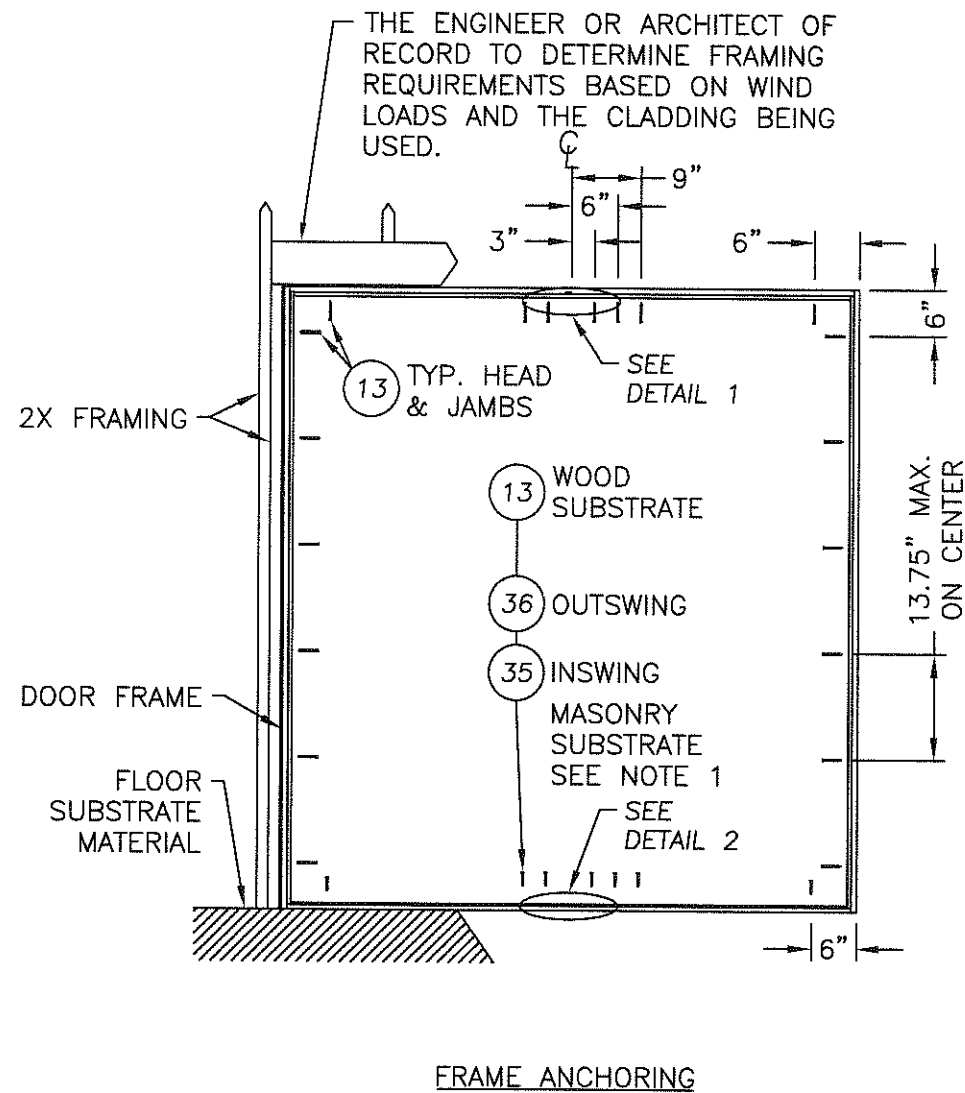
Documents Prepared By:  
**RW** BUILDING CONSULTANTS, INC.  
P.O. Box 230 Valrico FL 33595  
Phone No.: 813.659.9197  
Florida Board of Professional Engineers  
Certificate Of Authorization No. 9813  
*Wendell W. Hickey* 7-23-08  
Wendell W. Hickey, P.E. No. 54158

PRODUCT: THERMA-TRU  
GLAZED DOUBLE FIBERGLASS  
DOOR IN/OUTSWING IMPACT  
PART OR ASSEMBLY: VERTICAL  
CROSS SECTIONS

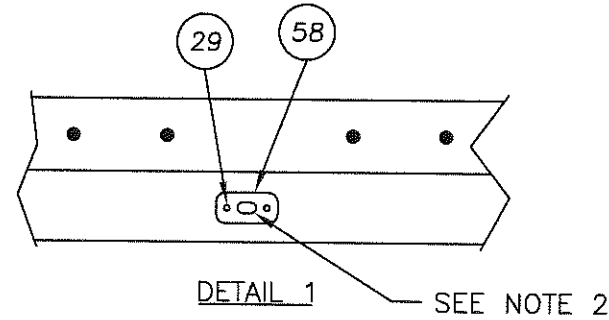
NO.	DATE	REV.	LOCK & DEADBOLT MODEL	AL	BY
1	7/9/08				

DATE: 12/15/06  
SCALE: N.T.S.  
DWG. BY: AEM  
CHK. BY: WWH  
DRAWING NO.: TX-3183  
SHEET 6 OF 8

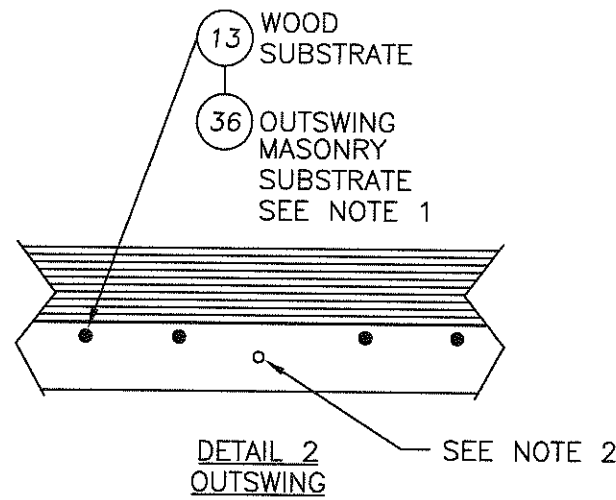
K:\VA - Project\Project folders\proj\_1101 - 1200\p11105\10 - RWBC Drawings\TX-3183\TX-3183 REV1\TX-3183-7.DWG, Model



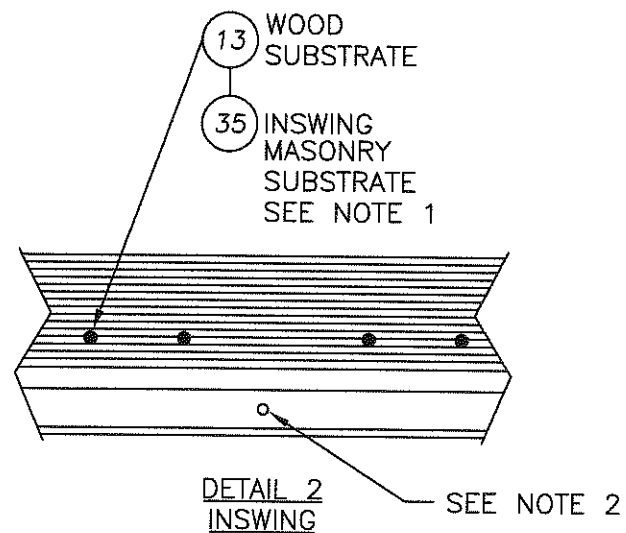
FRAME ANCHORING



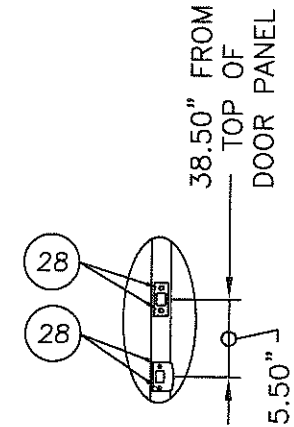
DETAIL 1 SEE NOTE 2



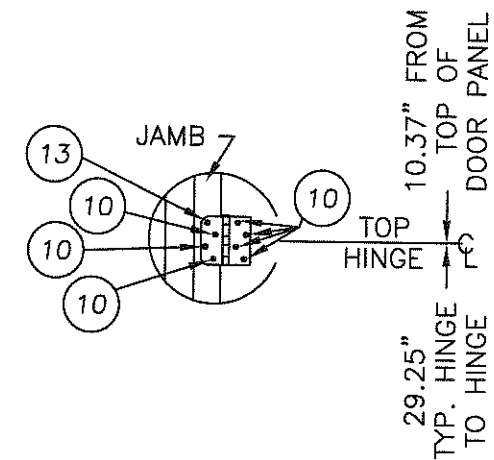
DETAIL 2 OUTSWING SEE NOTE 2



DETAIL 2 INSWING SEE NOTE 2



LATCH & DEADBOLT DETAIL



HINGE DETAIL (3) HINGES TOTAL

NOTES:

- 1/4" ITW CONCRETE SCREWS ANCHORING FRAME AND/OR SILL REQUIRE A MINIMUM 2-1/2" CLEARANCE TO MASONRY EDGES AND A MINIMUM 3" CLEARANCE TO ADJACENT CONCRETE SCREWS UNLESS OTHERWISE NOTED BY CONCRETE SCREW MANUFACTURER.
- THE ASTRAGAL BOLT HAS A 3" THROW AT THE TOP AND THE BOTTOM.

Documents Prepared By:

**RW** BUILDING CONSULTANTS, INC.  
P.O. Box 230 Vero Beach, FL 33595  
Phone No.: 813.659.9197  
Florida Board of Professional Engineers  
Certificate of Authorization No. 9813  
*Wendell W. Haney* 7-23-08  
Wendell W. Haney, P.E. No. 54158

PRODUCT: THERMA-TRU DOUBLE GLAZED FIBERGLASS DOOR IN/OUTSWING "IMPACT"  
PART OR ASSEMBLY: FRAME ANCHORING

REVISIONS	
NO.	DATE
1	7/9/08
	REV. LOCK & DEADBOLT MODEL
	AL BY

DATE: 12/15/06

SCALE: N.T.S.

DWG. BY: AEM

CHK. BY: WWH

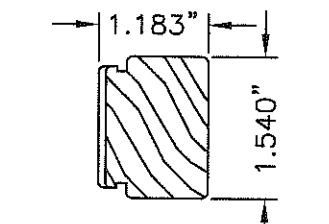
DRAWING NO.:

TX-3183

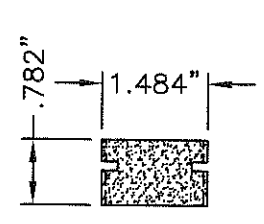
SHEET 7 OF 8

K:\VA - Projects\Project Holders\Proj 1101 - 1200\prt1105.D - RWBC Drawings\TX-3183\TX-3183 REV1\TX-3183-8.DWG, Model

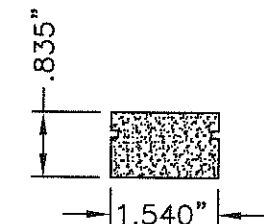
Item	DESCRIPTION	Material
1	DOOR SKIN; SMOOTH STAR SERIES (.065" MIN.)	FIBERGLASS
1A	DOOR SKIN; CLASSIC CRAFT & RUSTIC SERIES (.090" MIN.)	FIBERGLASS
1B	DOOR SKIN; FIBER CLASSIC SERIES (.065" MIN.)	FIBERGLASS
2	TOP RAIL DOOR THERMA-TRU (SMOOTH STAR)	COMP.
3	LATCH STILE DOOR THERMA-TRU (SMOOTH STAR)	LVL
4	HINGE STILE DOOR THERMA-TRU (SMOOTH STAR)	WOOD
5	BOTTOM RAIL DOOR THERMA-TRU (SMOOTH STAR)	COMP.
6	POLYURETHANE FOAM	FOAM
7	MEDIUM REACH COMPRESSION WEATHER-STRIP (THERMA-TRU)	FOAM
8	LONG REACH COMPRESSION WEATHER-STRIP (THERMA-TRU)	FOAM
9	4" x 4" HINGE .097" THK. (THERMA-TRU)	STEEL
10	#10 x 3/4" PFH WOOD SCREW (Hinge to Frame)	STEEL
11	#10 x 1-1/2" PPH SHEET METAL SCREW	STEEL
12	#10 x 2" PFH WOOD SCREW	STEEL
13	#10 x 2-1/2" PFH WOOD SCREW	STEEL
14	2X FRAMING	WOOD
15	NOT USED	-
16	MAX. 1/4" SHIM MATERIAL	WOOD
17	LOCK - KWIKSET ULTRAMAX 740	STEEL
18	THRESHOLD OUTSWING (THERMA-TRU)	ALUM./WOOD
19	HEADER JAMB (4.656" x 1.25" THERMA-TRU, PINE)	WOOD
20	SIDE JAMB (4.656" x 1.25" THERMA-TRU) (FJ PINE)	WOOD
21	DEADBOLT - KWIKSET 780 SINGLE CYLINDER	STEEL
22	INTERIOR LITE FRAME	ALUM.
23	EXTERIOR LITE FRAME	ALUM.
24	LOCK BLOCK (SMOOTH STAR)	WOOD
25	SILICONE CAULK	SILICONE
26	CELLULAR GLAZING TAPE	FOAM
27	LATCH STRIKE	STEEL
28	#8 x 2-1/2" PFH WOOD SCREW	STEEL
29	#8 x 3" PFH SCREW	STEEL
30	1" THK. INSUL. LAMINATED GLASS (INTERLAYER BY SOLUTIA) 1/8" TEMP.- AIR - 5/32" ANN. / .090" INTERLAYER / 1/8" ANN.	GLASS
31	NOT USED	-
32	DOOR BOTTOM SWEEP (INSWING)	PVC
33	INSWING THRESHOLD	ALUM./COMP.
34	NOT USED	-
35	1/4" x 2-1/4" ITW TAPCON	STEEL
36	1/4" x 1-3/4" ITW TAPCON	STEEL
37	NOT USED	-
38	NOT USED	-
39	LITE FRAME TRIM	PVC
40	#9 x 3" PFH WOOD SCREW	STEEL
41	NOT USED	-
42	NOT USED	-
43	NOT USED	-
44	NOT USED	-
45	NOT USED	-
46	TOP RAIL (CLASSIC CRAFT & RUSTIC)	COMP.
47	BOTTOM RAIL (CLASSIC CRAFT & RUSTIC)	COMP.
48	LATCH SIDE STILE (CLASSIC CRAFT & RUSTIC)	LSL / OAK
49	HINGE SIDE STILE (CLASSIC CRAFT & RUSTIC)	LSL / OAK
50	TOP RAIL (FIBER CLASSIC)	COMP.
51	BOTTOM RAIL (FIBER CLASSIC)	COMP.
52	HINGE SIDE STILE (FIBER CLASSIC)	WOOD
53	LOCK BLOCK (FIBER CLASSIC)	WOOD
54	LATCH SIDE STILE (FIBER CLASSIC)	LVL / OAK
55	NOT USED	-
56	NOT USED	-
57	ASTRAGAL (6063-T5)	ALUM.
58	ASTRAGAL STRIKE PLATE	STEEL



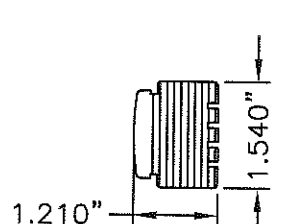
4 HINGE STILE (SMOOTH STAR)



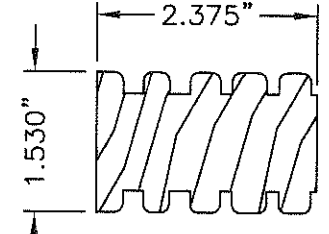
46 TOP RAIL (CLASSIC CRAFT & RUSTIC)



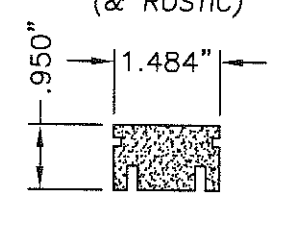
50 TOP RAIL (FIBER CLASSIC)



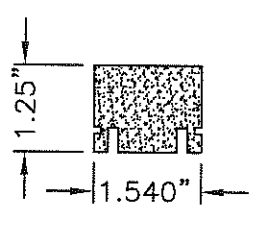
54 LATCH SIDE STILE (FIBER CLASSIC)



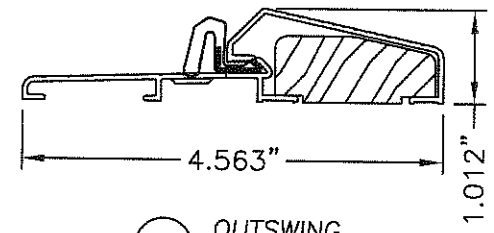
24 LOCK BLOCK (SMOOTH STAR)



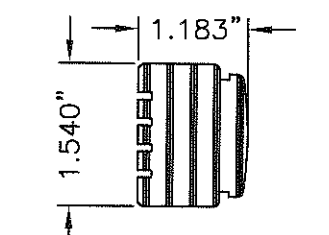
47 BOTTOM RAIL (CLASSIC CRAFT & RUSTIC)



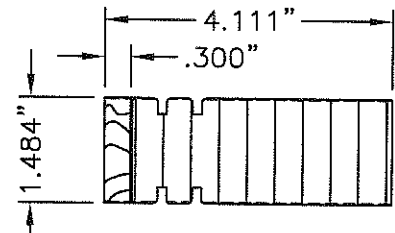
51 BOTTOM RAIL (FIBER CLASSIC)



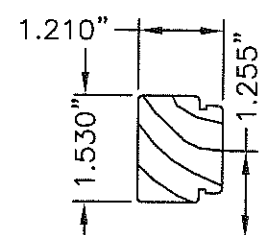
18 OUTSWING THRESHOLD



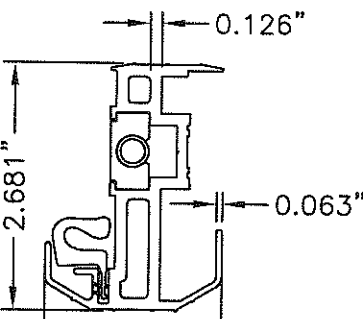
3 LATCH STILE (SMOOTH STAR)



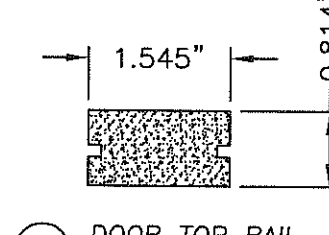
48 LATCH SIDE STILE (CLASSIC CRAFT & RUSTIC)



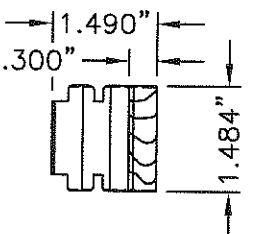
52 HINGE SIDE STILE (FIBER CLASSIC)



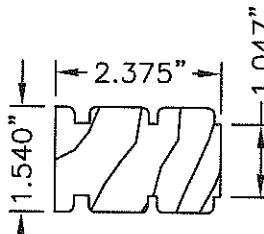
57 ASTRAGAL



2 DOOR TOP RAIL (SMOOTH STAR)

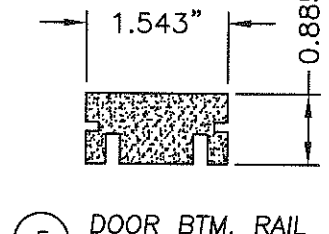


49 HINGE SIDE STILE \* (CLASSIC CRAFT & RUSTIC)

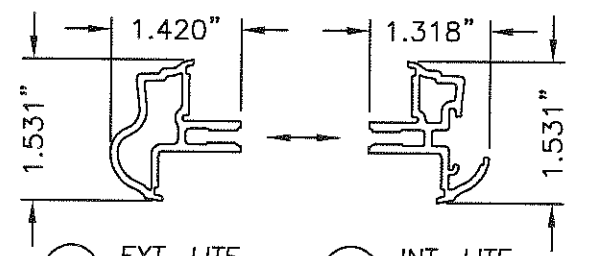


53 LOCK BLOCK (FIBER CLASSIC)

\* HINGE SIDE STILE  
\*CORE MATERIAL: LVL OR LSL  
ALTERNATE CORE MATERIAL: PONDEROSA, RADIATA, PULAI, ELLIOTTII, TAEDA OR SUGAR PINE, DOUGLAS OR WHITE FIR, CEDAR, INCENSE CEDAR OR REDWOOD.

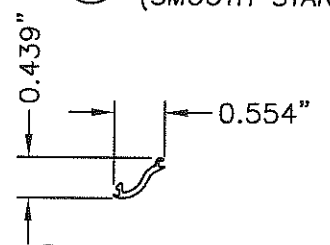


5 DOOR BTM. RAIL (SMOOTH STAR)

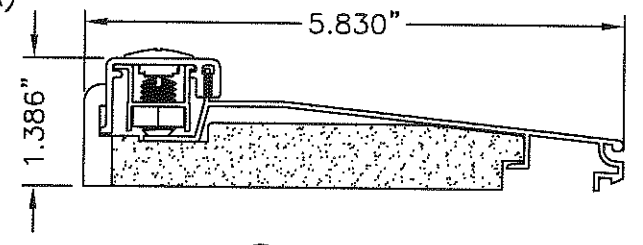


23 EXT. LITE FRAME

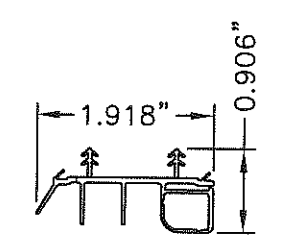
22 INT. LITE FRAME



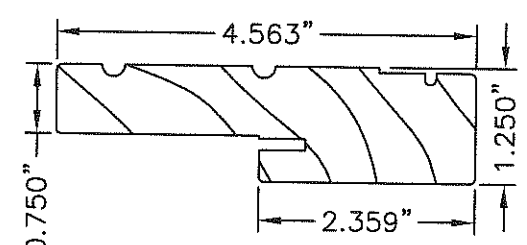
39 LITE FRAME TRIM



33 INSWING THRESHOLD



32 SWEEP



19 20 HEAD & SIDE JAMB

Documents Prepared By: **RW** BUILDING CONSULTANTS, INC.  
P.O. Box 230 Vairico FL 33595  
Phone No.: 813.659.9197  
Florida Board of Professional Engineers  
Certificate Of Authorization No. 9813  
Wendell W. Harney, P.E. No. 54158

PRODUCT: THERMA-TRU GLAZED DOUBLE FIBERGLASS DOOR IN/OUTSWING IMPACT

PART OR ASSEMBLY: BILL OF MATERIALS & COMPONENTS

NO.	DATE	REV.	LOCK & DEADBOLT MODEL	AL	BY
1	7/9/08				

REVISIONS

DATE: 12/15/06  
SCALE: N.T.S.  
DWG. BY: AEM  
CHK. BY: WWH  
DRAWING NO.: TX-3183  
SHEET 8 OF 8

© 2008 R.W. BUILDING CONSULTANTS, INC.